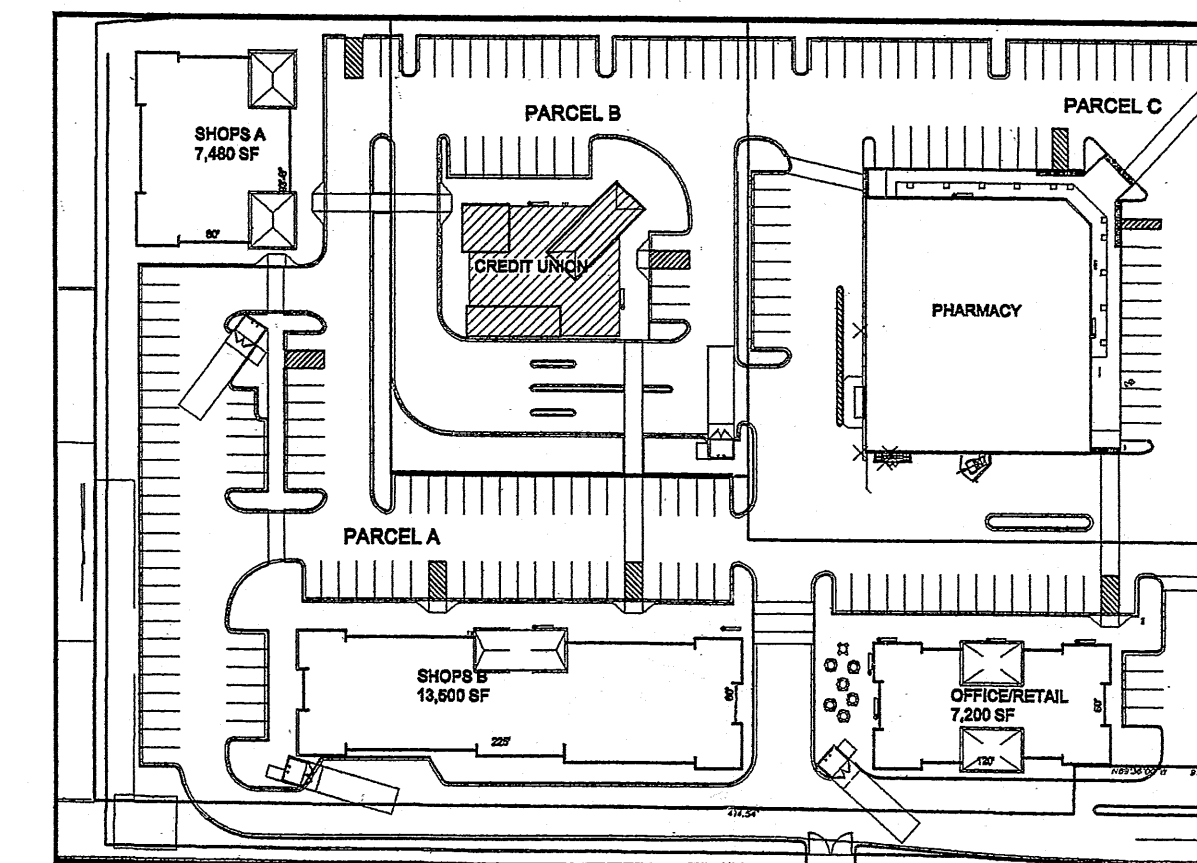


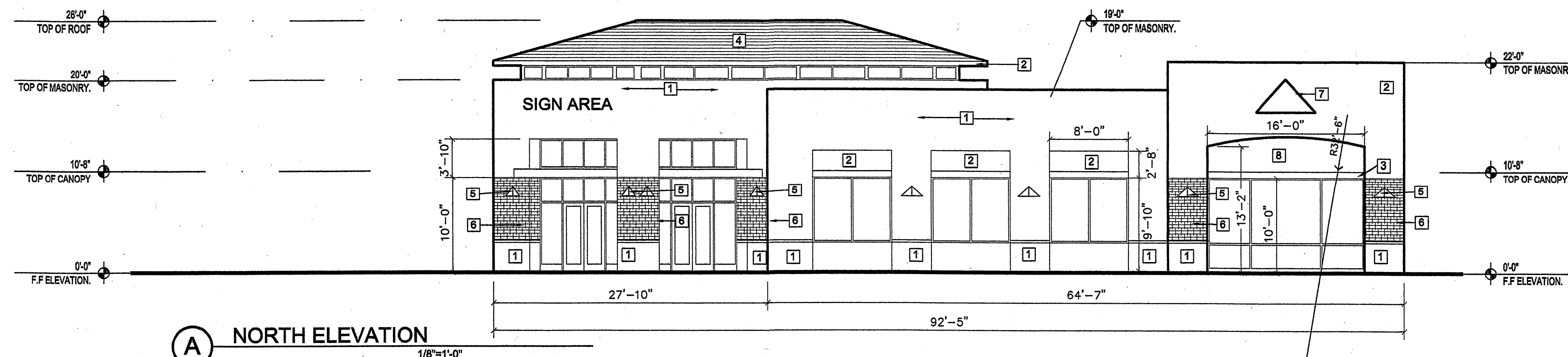
Keyed Color	Material Schedule	Common Name
1	STUCCO LIGHT TAN BENJAMIN MOORE # 951	LIGHT TAN
2	STUCCO MEDIUM DARK TAN SHERWIN WILLIAMS # 0040	MEDIUM DARK TAN
3	TUBE STEEL CANOPY DARK BRONZE	DARK BRONZE
4	TILE ROOF LIGHT GRAY FLAT CONCRETE TILE	LIGHT GRAY
5	LIGHT FIXTURE BLACK	BLACK
6	CULTURED STONE VENEER BROWN	BROWN
7	BANK LOGO	
8	STUCCO SOLITUDE SW 6535	MEDIUM DARK GRAY

NOTES:

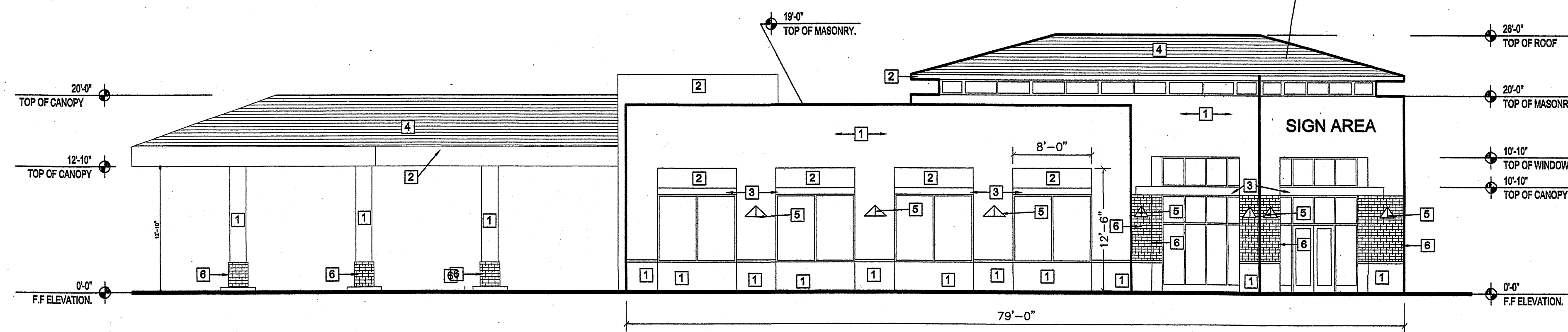
SIGNS NOT TO EXCEED 8% OF THE FACADE TO WHICH IT IS APPLIED FOR SHOPS A, CREDIT UNION AND PHARMACY.
 SIGNS NOT TO EXCEED 8% OF THE FACADE TO WHICH IT IS APPLIED FOR SHOPS B, AND OFFICE/RETAIL.
 SIGNS TO CONSIST OF INDIVIDUAL ALUMINUM PAN CHANNEL LETTERS, INTERNALLY ILLUMINATED, NO SIGN TO FACE RESIDENTIAL AREAS.



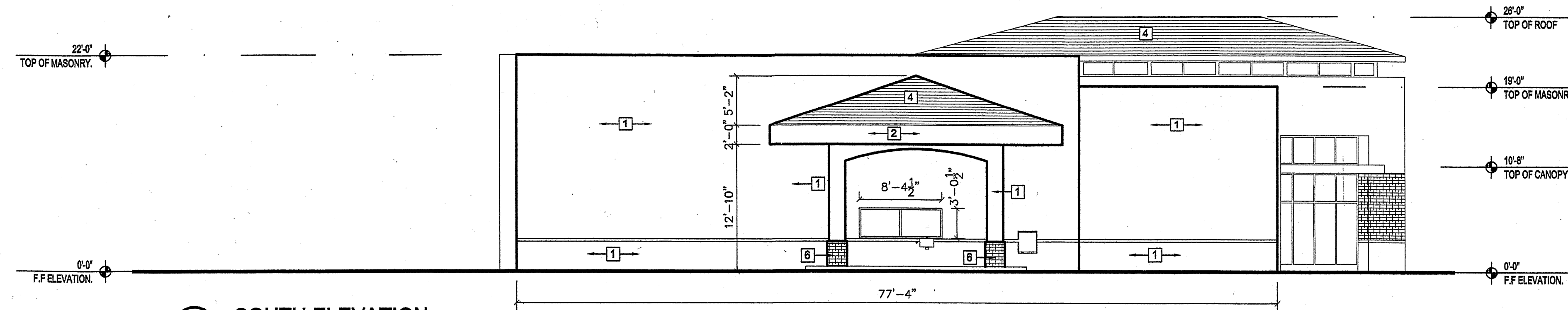
E KEY PLAN
NTS



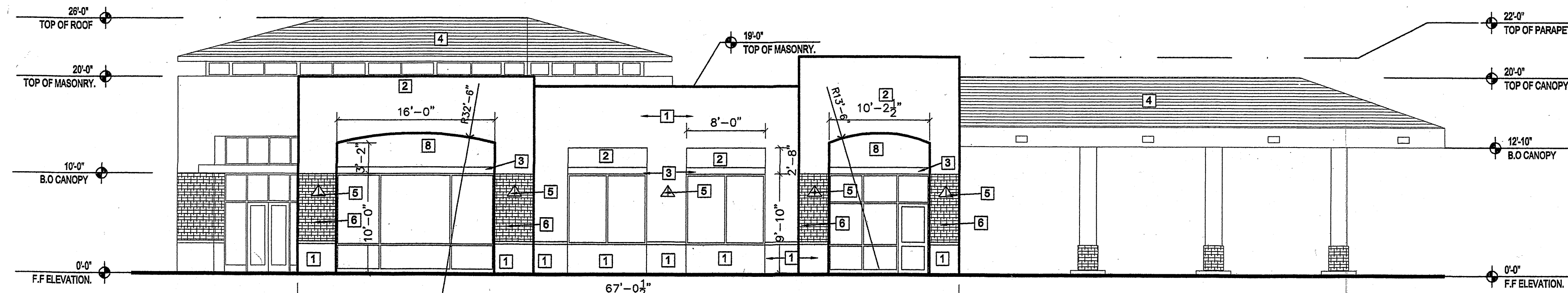
A NORTH ELEVATION
1/8"=1'-0"



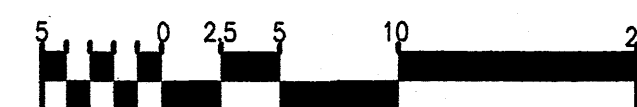
B EAST ELEVATION
1/8"=1'-0"



C SOUTH ELEVATION
1/8"=1'-0"



D WEST ELEVATION
1/8"=1'-0"



REV	DATE	BY	REVISION
1			
2			
3			
4			
5			
6			
7			
8			

GEORGE RAINHART, ARCHITECT AND ASSOCIATES P.C.
 2325 SAN PEDRO NE, SUITE 2-B
 ALBUQUERQUE, NEW MEXICO 87110
 PHONE (505) 884-9110 FAX (505) 837-9877

PROJECT TITLE PASEO DEL NORTE & VENTURA	DATE 6.22.07	sheet A3.2
PROJECT MANAGER JOHN STERN	JOB NO. 0771	of
DRAWN BY NAH	ELEVATIONS BANK	
APPROVED DRG		