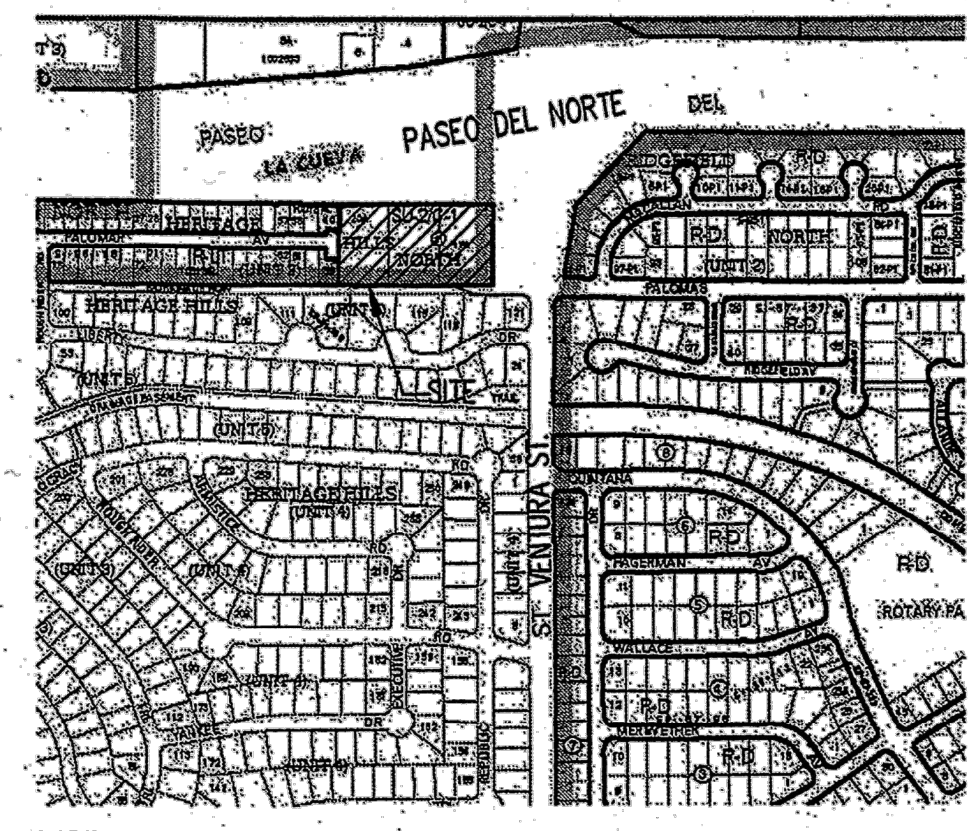
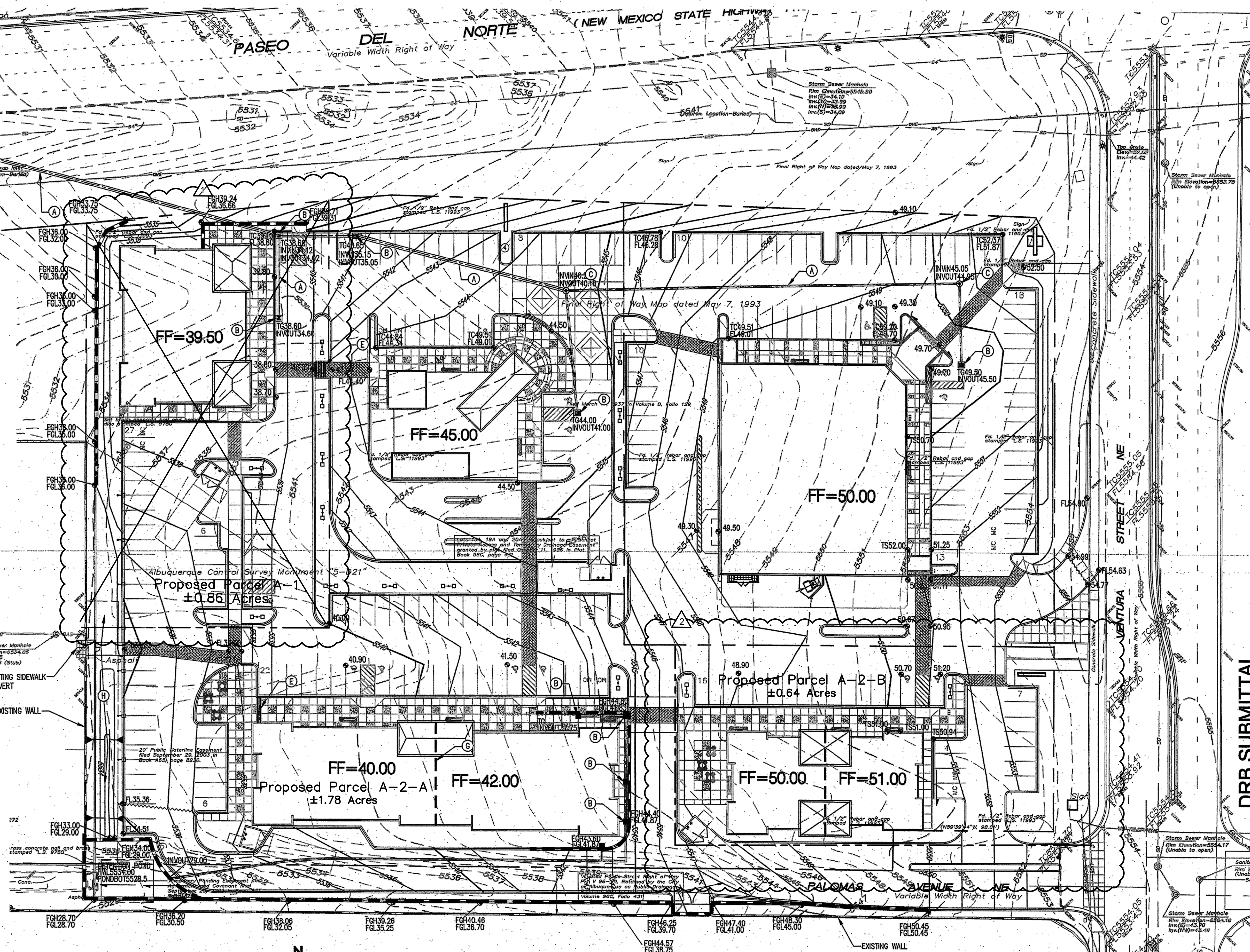


LEGEND

- PROPERTY LINE
- - - 5.301- EXISTING CONTOURS
- 5301.15 EXISTING GROUND SPOT ELEVATION
- 98.25 PROPOSED SPOT ELEVATION
- TC=TOP OF CURB, FL=FLOW LINE
- TW=TOP OF WALL, BW=BOTTOM OF WALL
- EX=EXISTING, TO=TOP OF GRADE
- FGH=FINISH GROUND HIGH SIDE
- FGL=FINISH GROUND LOW SIDE
- PROPOSED DIRECTION OF FLOW
- WATER BLOCK
- 5305- PROPOSED INDEX CONTOURS
- PROPOSED INTER-CONTOURS
- PROPOSED RETAINING WALL
- PROPOSED STORM DRAIN INLET
- PROPOSED MANHOLE
- EXISTING MONUMENT



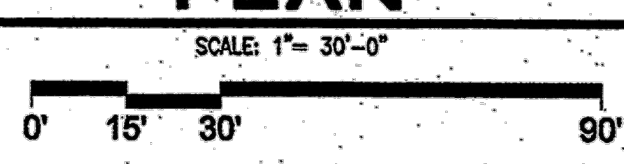
ALTA/AC.S.M. LAND TITLE SURVEY OF PORTIONS OF LOTS 13, 14, 15, 16 AND 17 AND ALL OF LOTS 18A, 19A AND 20A BLOCK 31 TRACT A, UNIT A NORTH ALBUQUERQUE ACRES CITY OF ALBUQUERQUE, BERNALILLO COUNTY, NEW MEXICO SEPTEMBER, 2006



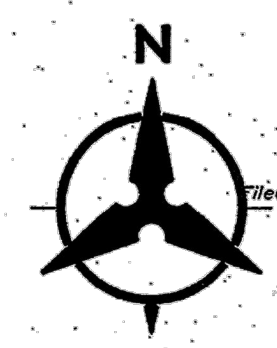
KEYED NOTES

- (A) PRIVATE STORM DRAIN LINE.
- (B) NYLOPLAST INLET.
- (C) PRIVATE STORM DRAIN MANHOLE.
- (D) SIDEWALK CULVERT.
- (E) STAIRS.
- (F) CONNECTION TO EXISTING STORM DRAIN MANHOLE.
- (G) STEP.
- (H) DETENTION POND.

CONCEPTUAL GRADING PLAN



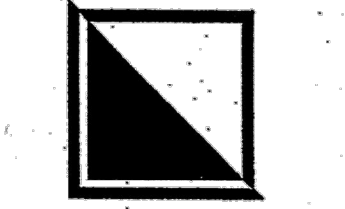
Bohannon & Huston
 Courtyard | 7800 Jefferson St. NE Albuquerque, NM 87109-4335
 ENGINEERING • SPATIAL DATA • ADVANCED TECHNOLOGIES



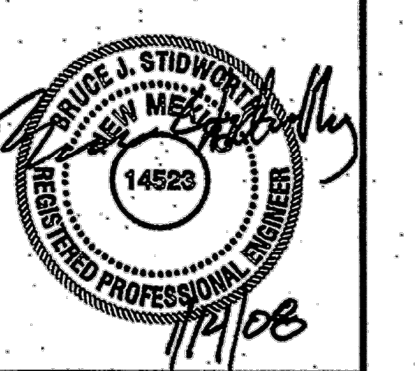
- 1 4/25/2017; REVISE GRADING PLAN FOR PARCEL A-1. REF. SHEET C1.1.
- 2 8/31/2017; REVISE GRADING PLAN FOR PARCEL A-2-B. REF. SHEET C1.2.

Filed April 14, 1980 in Volume 96C, Folio 137

REV	DATE	BY	REVISION
1			
2			
3			
4			
5			



GEORGE RAINHART, ARCHITECT AND ASSOCIATES P.C.
 2325 SAN PEDRO NE, SUITE 2-B
 ALBUQUERQUE, NEW MEXICO 87110
 PHONE (505) 884-9110 FAX (505) 837-9877



DRB SUBMITTAL

PROJECT TITLE
 PASEO DEL NORTE & VENTURA
 PASEO DEL NORTE AND VENTURA ALBUQUERQUE, NM

PROJECT MANAGER
 JCS

DRAWN BY
 JCS

SHEET TITLE
 CONCEPTUAL GRADING PLAN

DATE	01.15.08
SCALE	AS NOTED
SHEET	C1