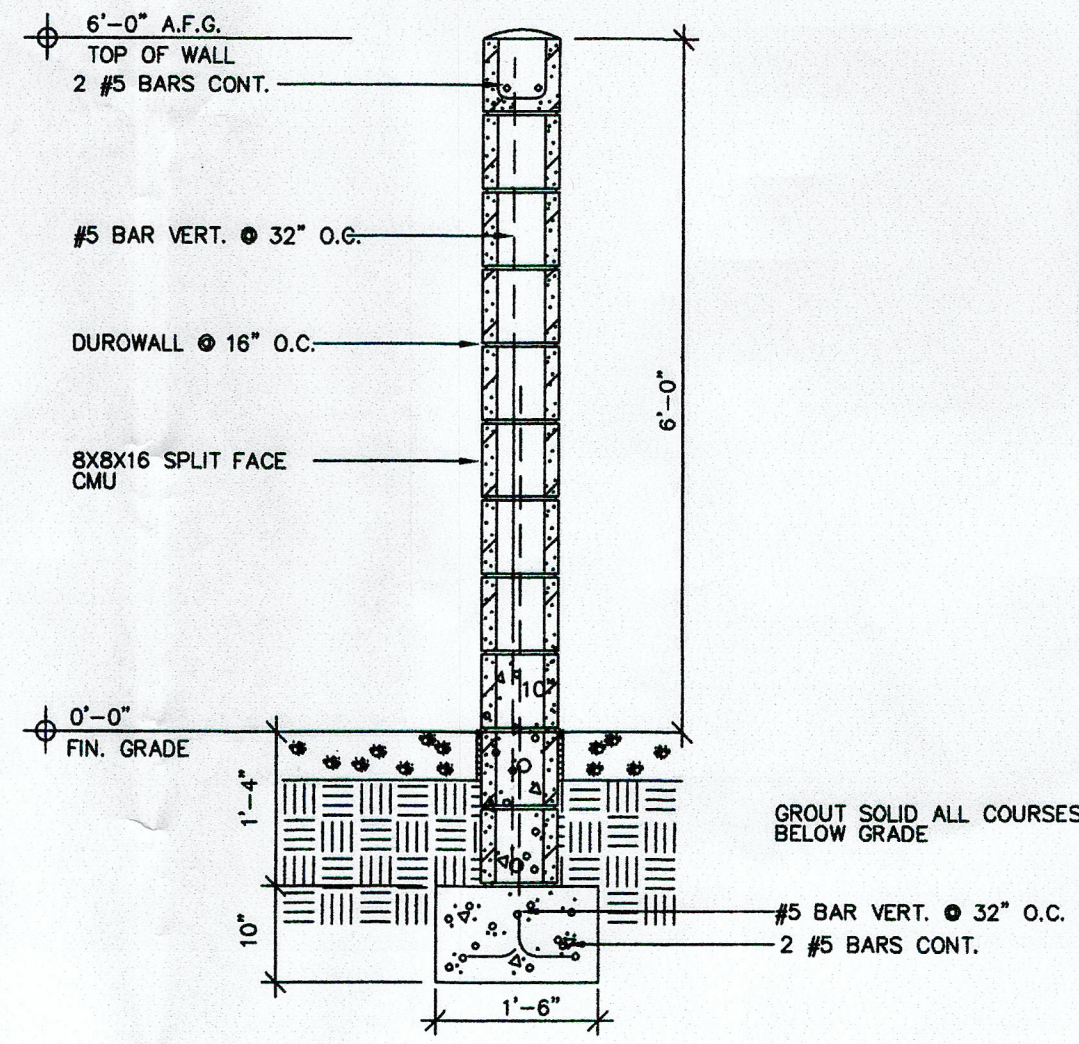


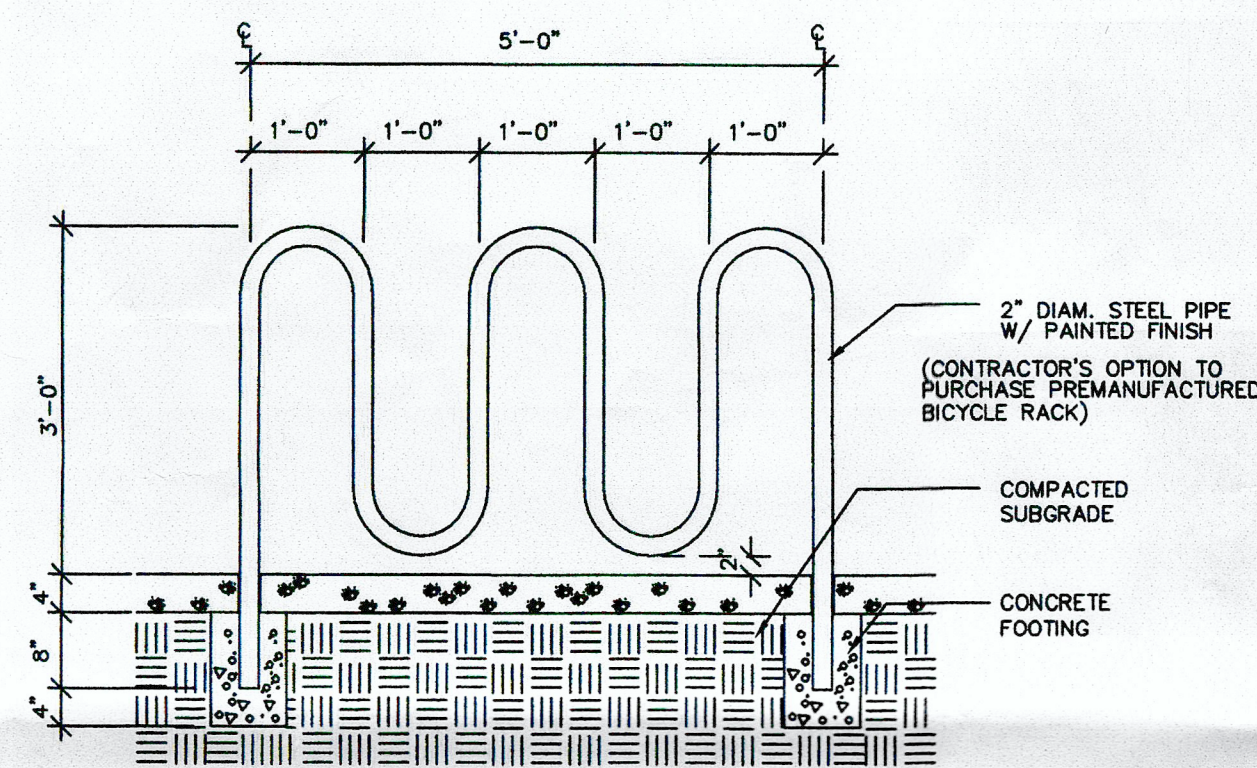
TRASH DUMPSTER ENCLOSURE PLAN

1 NOT TO SCALE



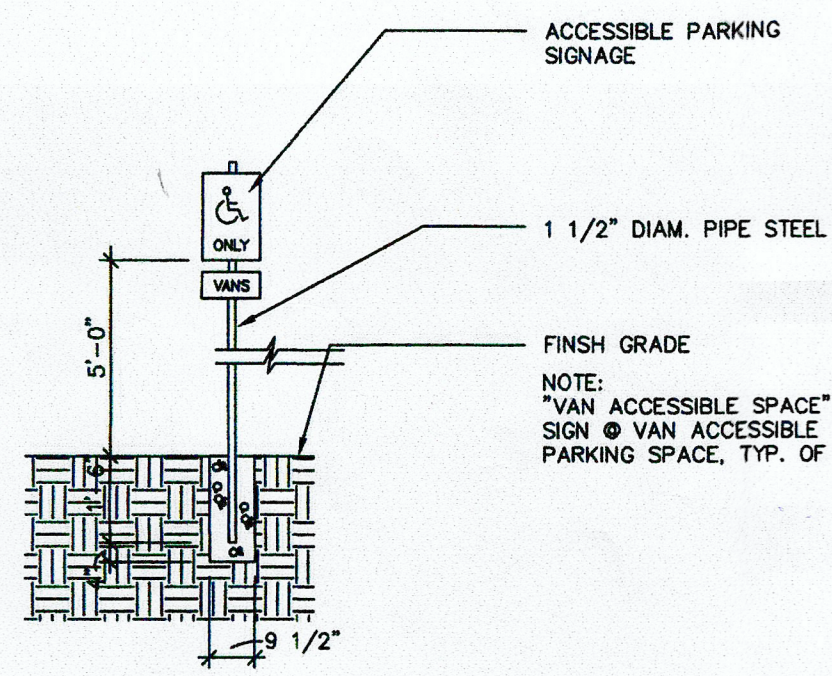
TRASH DUMPSTER ENCLOSURE WALL SECTION

2 NOT TO SCALE



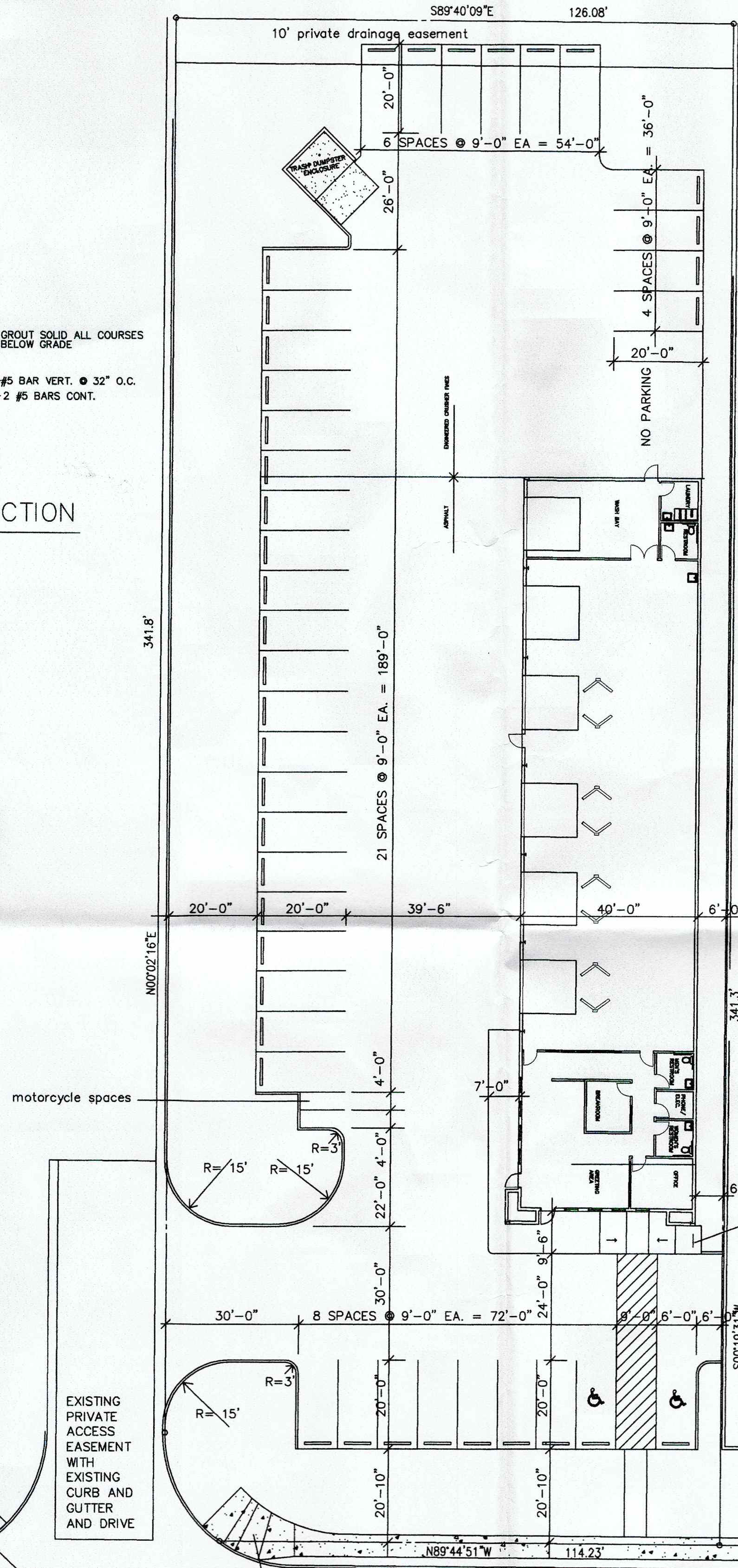
BICYCLE RACK

3 NOT TO SCALE



SIGN DETAIL

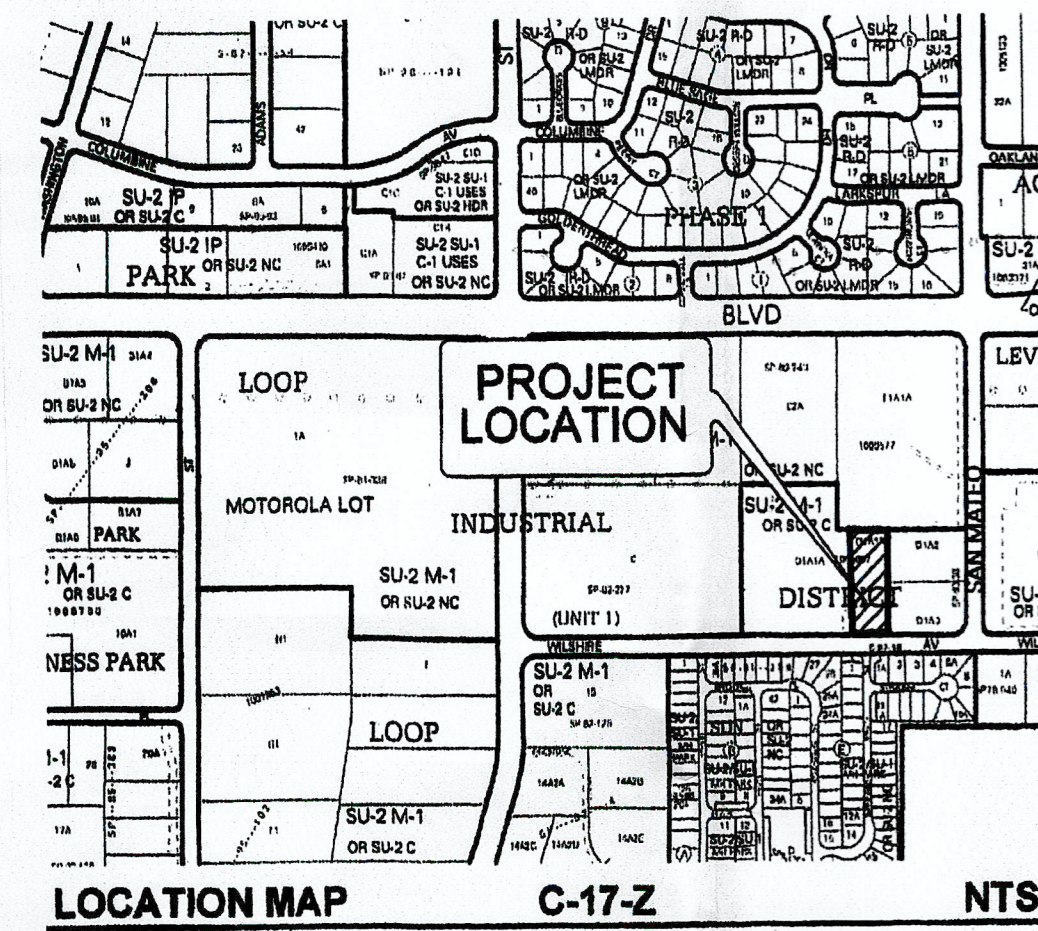
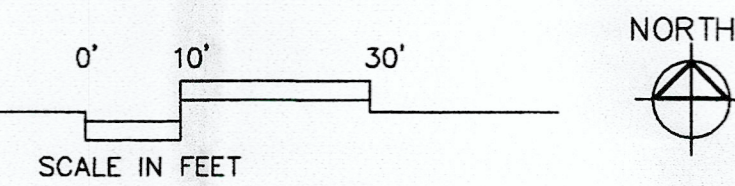
4 NOT TO SCALE



SITE PLAN

SCALE: 1" = 20'-0"

WILSHIRE AVE. N.E.
60' R.O.W.



LEGAL DESCRIPTION

TRACT "D-1A1-B", PLAT OF TRACTS D-1A1-A AND D-1A1-B, UNIT 1, LOOP INDUSTRIAL DISTRICT SUBDIVISION, CITY OF ALBUQUERQUE, BERNALILLO COUNTY, NEW MEXICO, AS THE SAME IS SHOWN AND DESIGNATED ON THE PLAT THEREOF, FILED IN THE OFFICE OF THE COUNTY CLERK OF BERNALILLO COUNTY, NEW MEXICO ON SEPTEMBER 18, 2007 IN PLAT BOOK 2007C, PAGE 268 AS DOCUMENT No. 2007133572

ZONING:

SU-2/M-1 OR SU-1/C

PARKING REQUIREMENTS

RETAIL AND SERVICES BUILDING - 1 SPACE PER 200 S.F. = 6000 S.F. ÷ 200 = 30 SPACES REQUIRED
 HANDICAP PARKING = 2 SPACES REQUIRED
 MOTORCYCLE PARKING = 2 SPACES REQUIRED
 SPACES PROVIDED = 38 REGULAR CAR SPACES PROVIDED
 HANDICAP PARKING = 2 SPACES PROVIDED
 MOTORCYCLE PARKING = 2 SPACES PROVIDED

SIGNATURE BLOCK

PROJECT NUMBER: _____
 application number: _____
 This plan is consistent with the specific Site Development Plan approved by the Environmental Planning Commission (EPC), dated _____ and the Findings and Conditions in the Official Notification of Decision are satisfied.

Is an Infrastructure List required? Yes No If yes, the a set of approved IRC plans with a work order is required for any construction within Public Right-of-Way of for construction of public improvements.

DRB SITE DEVELOPMENT PLAN SIGNOFF APPROVAL:

Traffic Engineering, Transport Division	Date
ABCWUA	Date
Parks and recreation Department	Date
City Engineer	Date
*Environmental Health Department (conditional)	Date
<i>Solid Waste Management</i>	3/21/19 Date
DRB Chairperson, Planning Department	Date

SAN MATEO BLVD N.E.

EXISTING FIRE HYDRANT

SILVER STAR AUTO HAUS
 5111 WILSHIRE AVE. N.E.
 ALBUQUERQUE, NEW MEXICO
 SANDERS & ASSOCIATES ARCHITECTS, P.C. 6000 ROGERS AVE. N.E. ALBUQUERQUE N.M. 87110 (505) 255-5040 FAX (505) 255-5040

