

6' HIGH CONC. AND MASONRY
RETAINING WALL (PHASE II) SEE WALL SECTION THIS SHEET.

ROHDE MAY KELLER McNAMARA
ARCHITECTURE

PROFESSIONAL CORPORATION

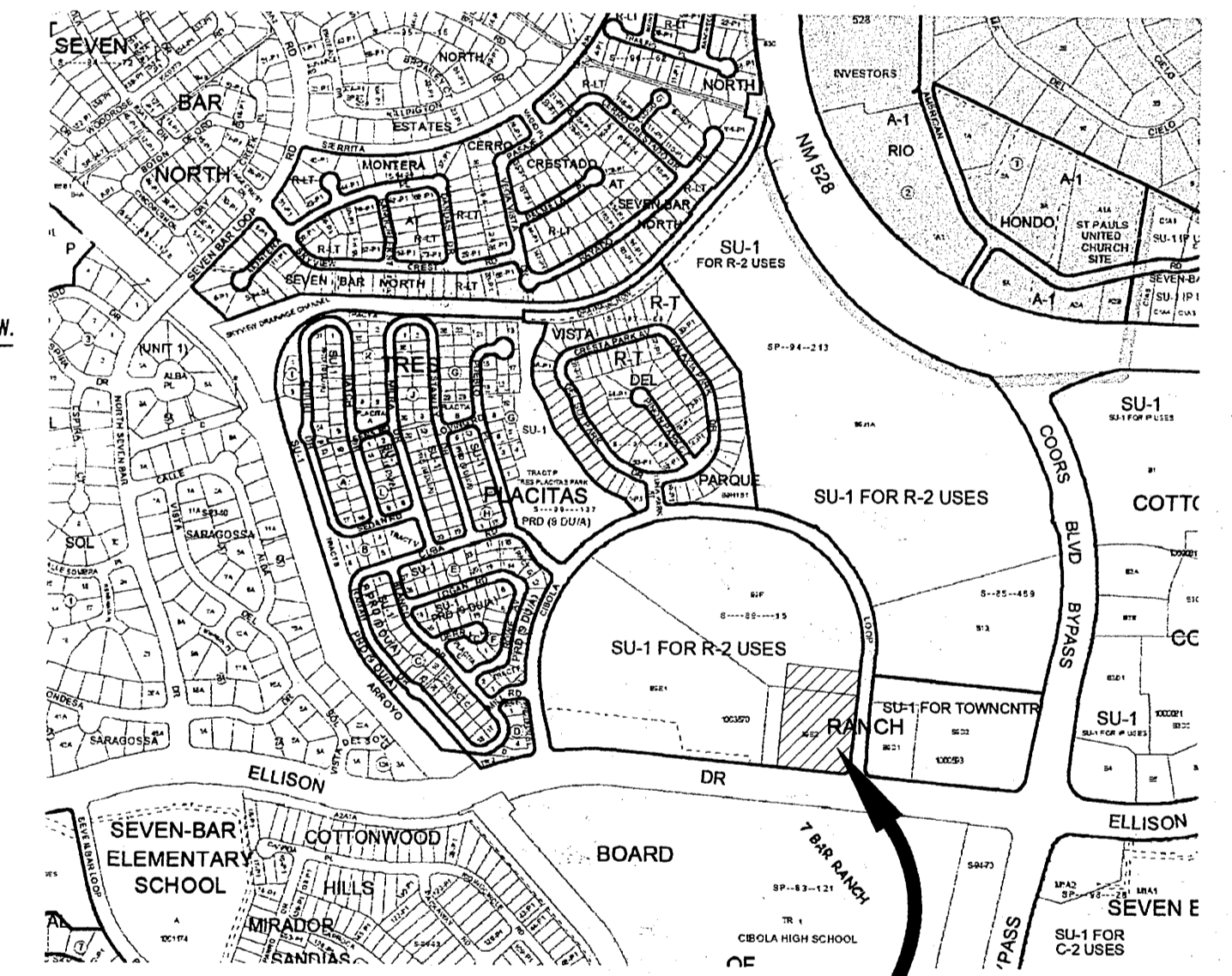
400 Gold Avenue, SW Studio 1100 Simms Tower Albuquerque, New Mexico 87102 USA tel. 505 243 5454

GENERAL NOTES

- A. The property lines indicated on this site plan are currently being replatted in an agreement with the adjacent developer. The final signed off replat will be recorded and submitted prior to final DRB sign off.
- B. The Albuquerque Police Department would like to place a temporary portable building (i.e. temporary substation) on the site to create a Westside Police presence while the design and construction of the permanent facility proceeds. This portion of the work (Phase One) will also include the build-out (permanent) R.O.W work, sidewalks, curb-cuts, public parking lot, landscaping, and some infrastructure work. The temporary substation will be placed as soon as possible and when the permanent facility nears completion (projected early 2009) the portable building will be removed.
- C. The Phase II facility will strive to achieve at least a Silver LEED rating thru the USGBC.
- D. For clarity the amount of parking spaces and dimensions indicated on this sheet are for Phase I only. Phase II parking totals and dimensions are noted on sheet A1.2.
- E. # INDICATES EXISTING EASEMENTS

PARKING DATA (PHASE I): FACILITY AREA:	3584 SF
PARKING REQUIRED: (1 SPACE/200 sq. ft.)	(18) SPACES
PUBLIC PARKING PROVIDED:	(16) STANDARD PARKING STALLS (2) ACCESSIBLE PARKING STALLS (1 REQUIRED) (2) MOTORCYCLE PARKING STALLS (20) TOTAL PUBLIC SPACES PROVIDED

SPBP
PRELIMINARY PLAN
APPROVED BY DRB
ON



VICINITY MAP
ZONE MAP A-13-Z SITE

OWNER
CITY OF ALBUQUERQUE
ALBUQUERQUE POLICE DEPARTMENT
400 Roma Avenue NW
Albuquerque, New Mexico 87103

SCALE
1" = 20'-0"

PROJECT NO.
0804 APD Sixth Area Command

DRAWING FILE NO.
*.DWG

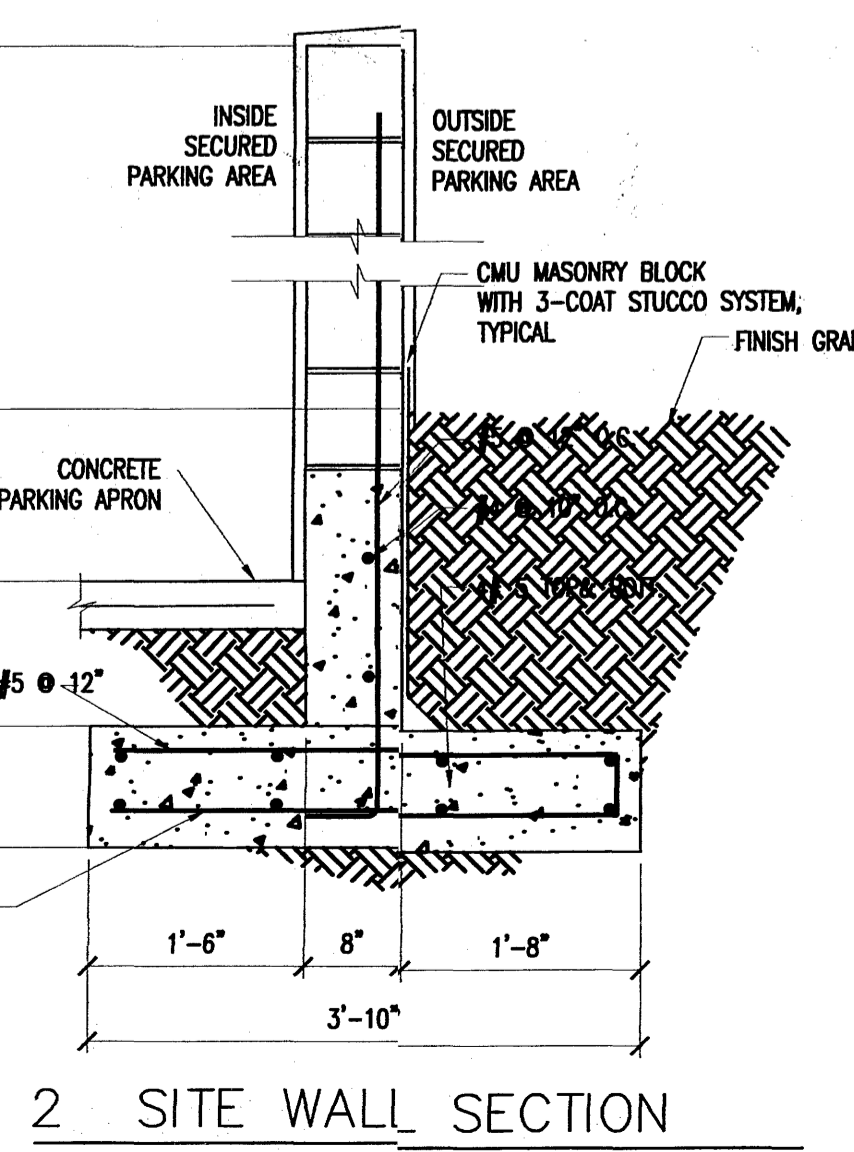
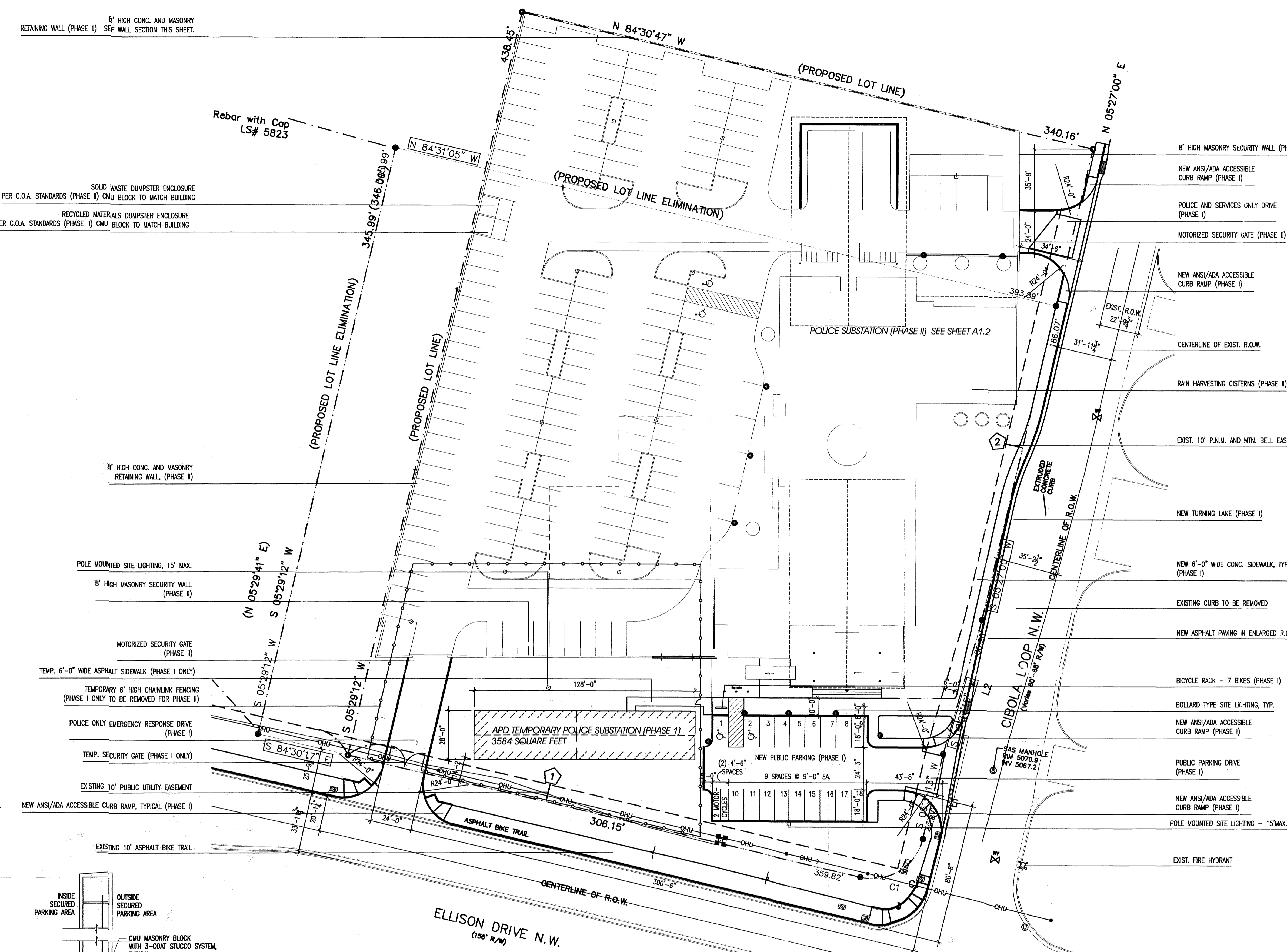
DATE
AUGUST 2, 2007

PROJECT MANAGER
RAMON J. SARASON, AIA, LEED

DRANN BY
RMKM

E.P.C. SUBMITTAL

CITY OF ALBUQUERQUE PUBLIC WORKS DEPARTMENT ENGINEERING DEVELOPMENT GROUP			
TITLE: ARCHITECTURAL SITE PLAN - PHASE I			
Design Review Committee	City Engineer Approval	MO./DAY/YR. 8/28/07	MO./DAY/YR.
City Project No. #1006721 EPC Submittal	Zone Map No. A-13-Z	Sheet * A.1.1	Of **



1 SITE PLAN - APD 6th Area Command
Scale: 1"=30'-0"

PROJECT NUMBER: _____

Application Number: _____

This plan is consistent with the specific Site Development Plan approved by the Environmental Planning Commission (EPC), dated _____ and the Findings and Conditions in the Official Notification of Decision are satisfied.

Is an Infrastructure List required? () Yes () No If yes, then a set of approved DRC plans with a work order is required for any construction within Public Right-of-Way or for construction of public improvements.

DRB SITE DEVELOPMENT PLAN SIGNOFF APPROVAL:

Traffic Engineering, Transportation Division	Date	City Engineer	Date
ABCWUA	Date	Environmental Health Department (conditional)	Date
Parks and Recreation Department	Date	Solid Waste Management	Date
		DRB Chairperson, Planning Department	Date

GENERAL NOTES

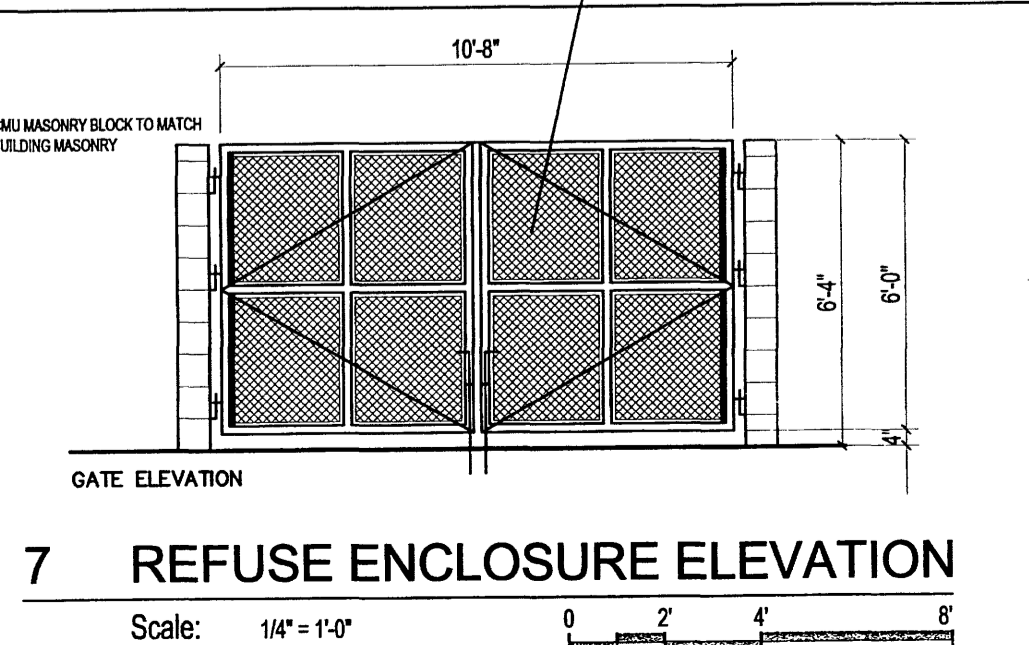
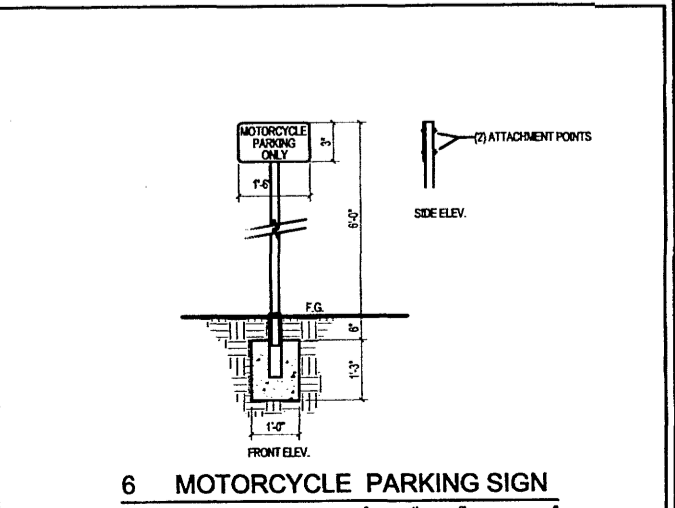
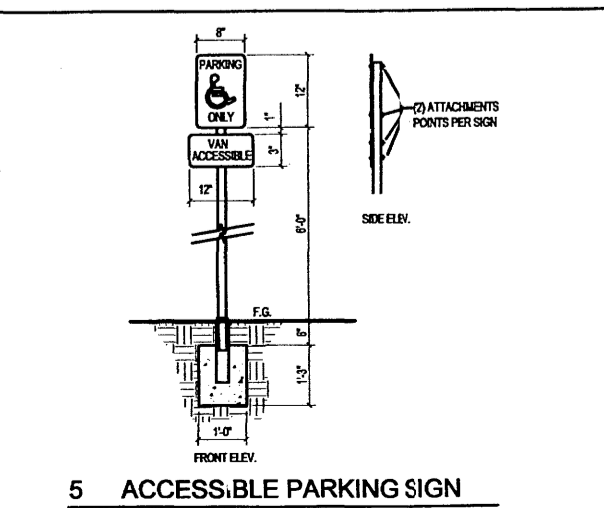
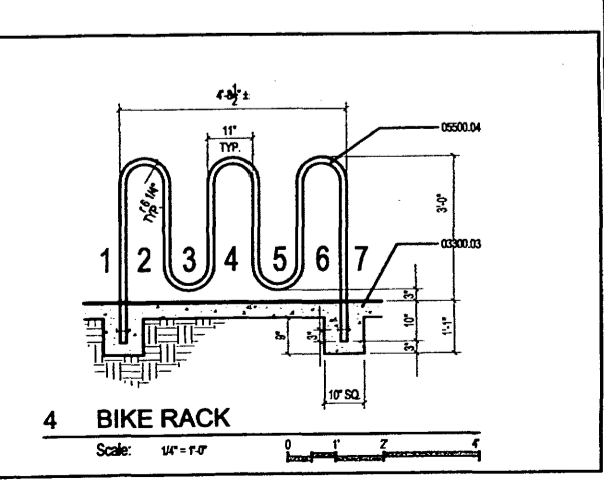
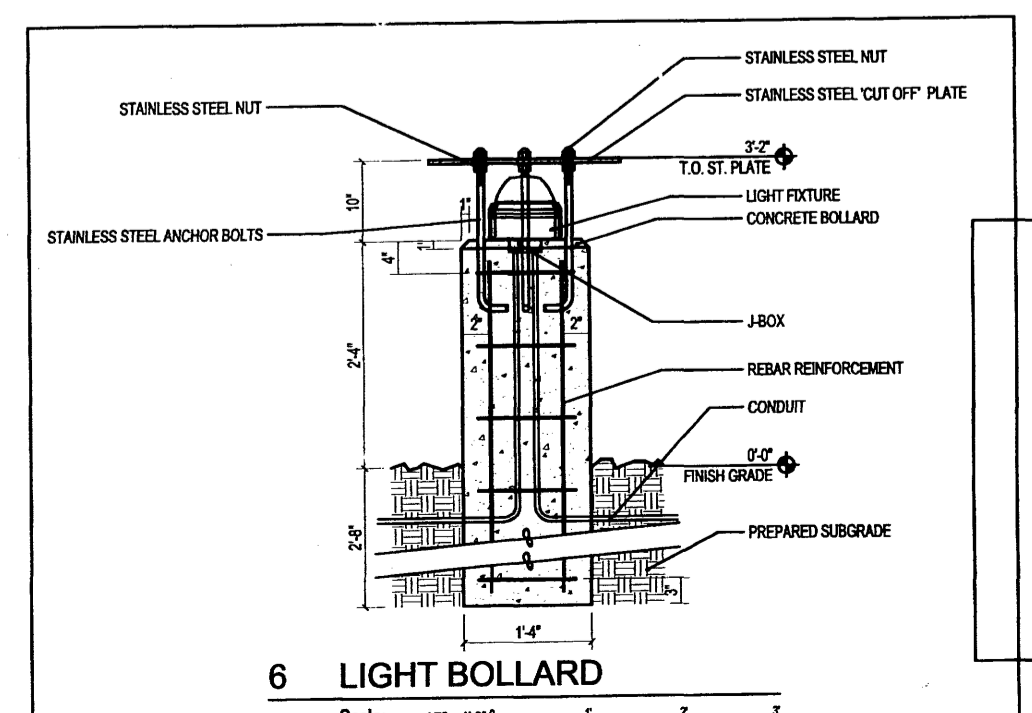
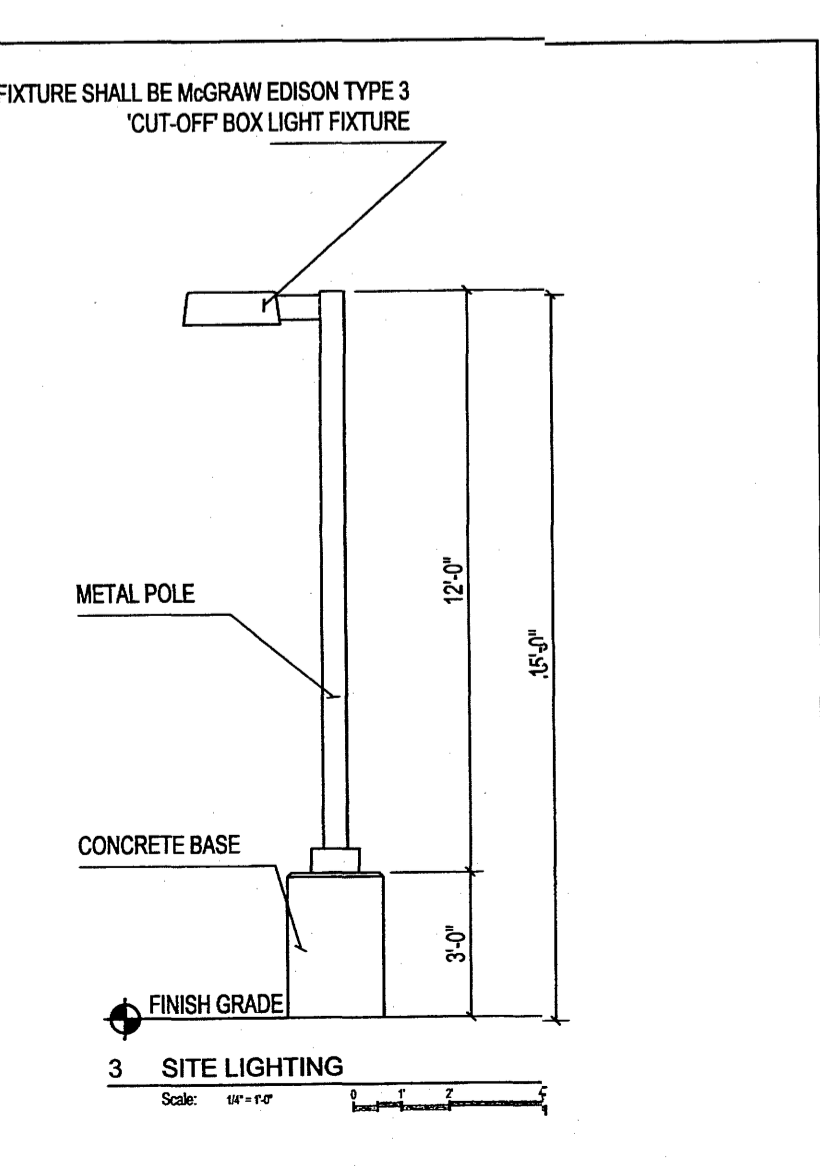
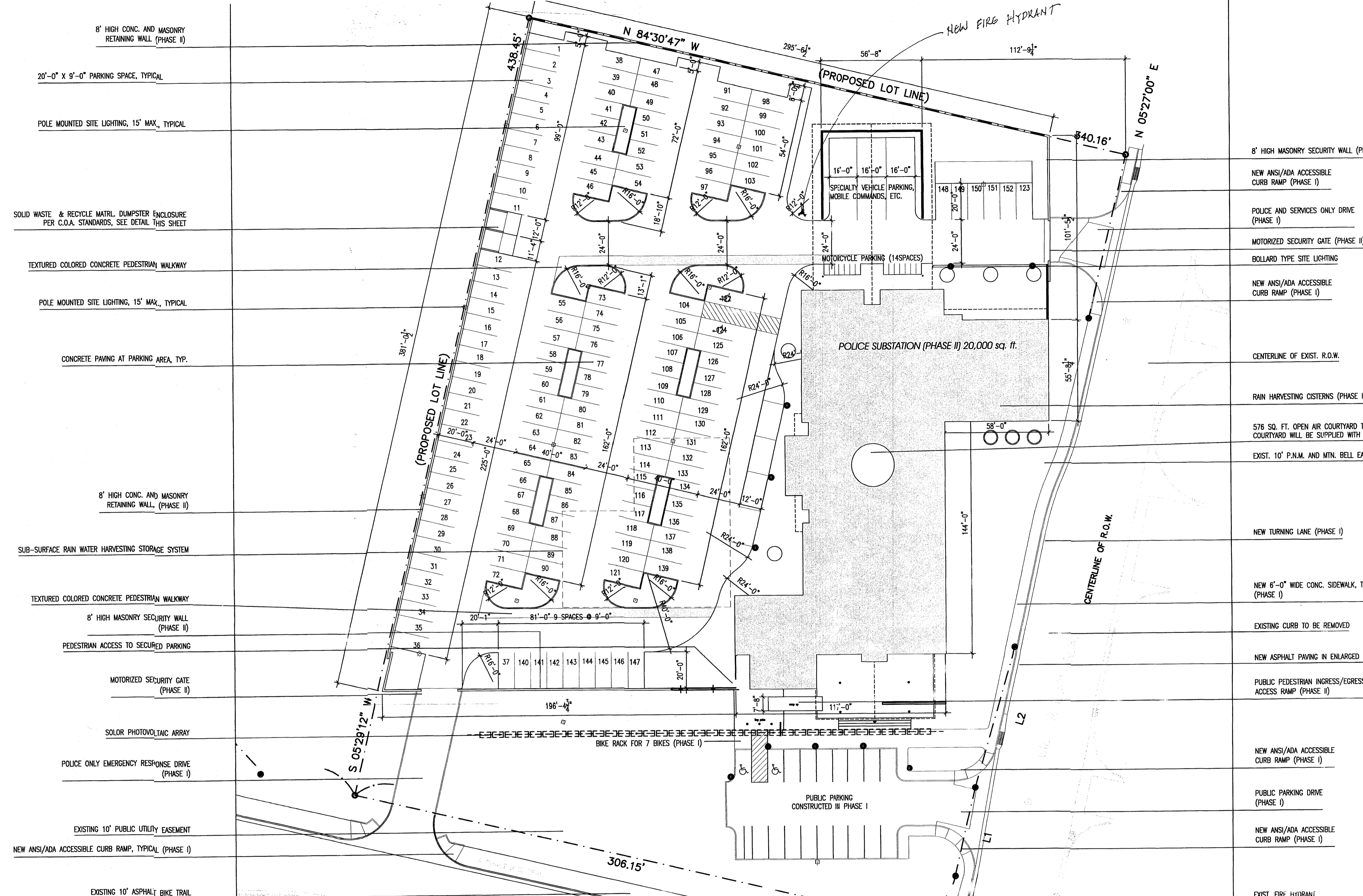
- A. ALL SITE LIGHTING FIXTURES NOT TO EXCEED 15' HIGH AND SHALL BE 'CUT-OFF' FIXTURES.
- B. For clarity the amount of parking spaces and dimensions indicated on this sheet are for Phase II only. Phase I parking totals and dimensions are noted on sheet A1.1.
- C. # INDICATES EXISTING EASEMENTS

PARKING DATA (PHASE II): FACILITY AREA: 20,000 SF (programmed objective)

POLICE PARKING REQUIRED: (1 SPACE/200 sq. ft.)	(100) APD CREW
POLICE PARKING PROVIDED:	(152) STANDARD PARKING STALLS
POLICE DISABLED PARKING REQUIRED:	(4) REQUIRED
POLICE DISABLED PARKING PROVIDED:	(4) PROVIDED
POLICE MOTORCYCLE PARKING REQUIRED:	(5) REQUIRED
POLICE MOTORCYCLE PARKING PROVIDED:	(14) PROVIDED

PUBLIC PARKING REQUIRED: 50 PERSONS/4 = (13) PUBLIC SPACES	(1) SPACE/4 VISITORS
PUBLIC PARKING PROVIDED:	per 14-16-3-1 "Off-Street Parking Regulations" COMMUNITY ROOM (50 VISITORS)
	(2) ACCESSIBLE PARKING STALLS: (1) REQUIRED
	(2) MOTORCYCLE PARKING STALLS: (1) REQUIRED
	(19) TOTAL PUBLIC SPACES PROVIDED

TOTAL PARKING REQUIRED:	(113) SPACES
TOTAL PARKING PROVIDED:	(172) SPACES



1 SITE PLAN APD 6th Area Command Scale: 1" = 30'-0"

CITY OF ALBUQUERQUE
"SOLID WASTE"
MANAGEMENT DEPARTMENT
APPROVED
11/6/07
M.H.

APD PLANS CHECKING OFFICE
924-3611
APPROVED
HYDRAUNTS ONLY
RC Lang 11-5-07
SIGNATURE & DATE

OWNER
CITY OF ALBUQUERQUE
ALBUQUERQUE POLICE DEPARTMENT
400 Roma Avenue NW
Albuquerque, New Mexico 87103

PROJECT
6th AREA COMMAND POLICE SUBSTATION

E.P.C. SUBMITTAL

SCALE
1" = 30'-0"

MARKING PROJECT NO.
0604 APD 6th Area Command

DRAWING FILE NO.
*.DWG

DATE
AUGUST 2, 2007

PROJECT MANAGER
RAMON J. SARASON, AIA, LEED

DRAWN BY
RMKM

CITY OF ALBUQUERQUE PUBLIC WORKS DEPARTMENT ENGINEERING DEVELOPMENT GROUP			
TITLE: ARCHITECTURAL SITE PLAN - PHASE II			
Design Review Committee	City Engineer Approval	Update	MO./DAY/YR.
		MO./DAY/YR.	MO./DAY/YR.
		8/28/07	
City Project No. #1006721 EPC Submittal	Zone Map No. A-13-Z	Sheet # A1.2	Of # A1.2

PLANT LEGEND

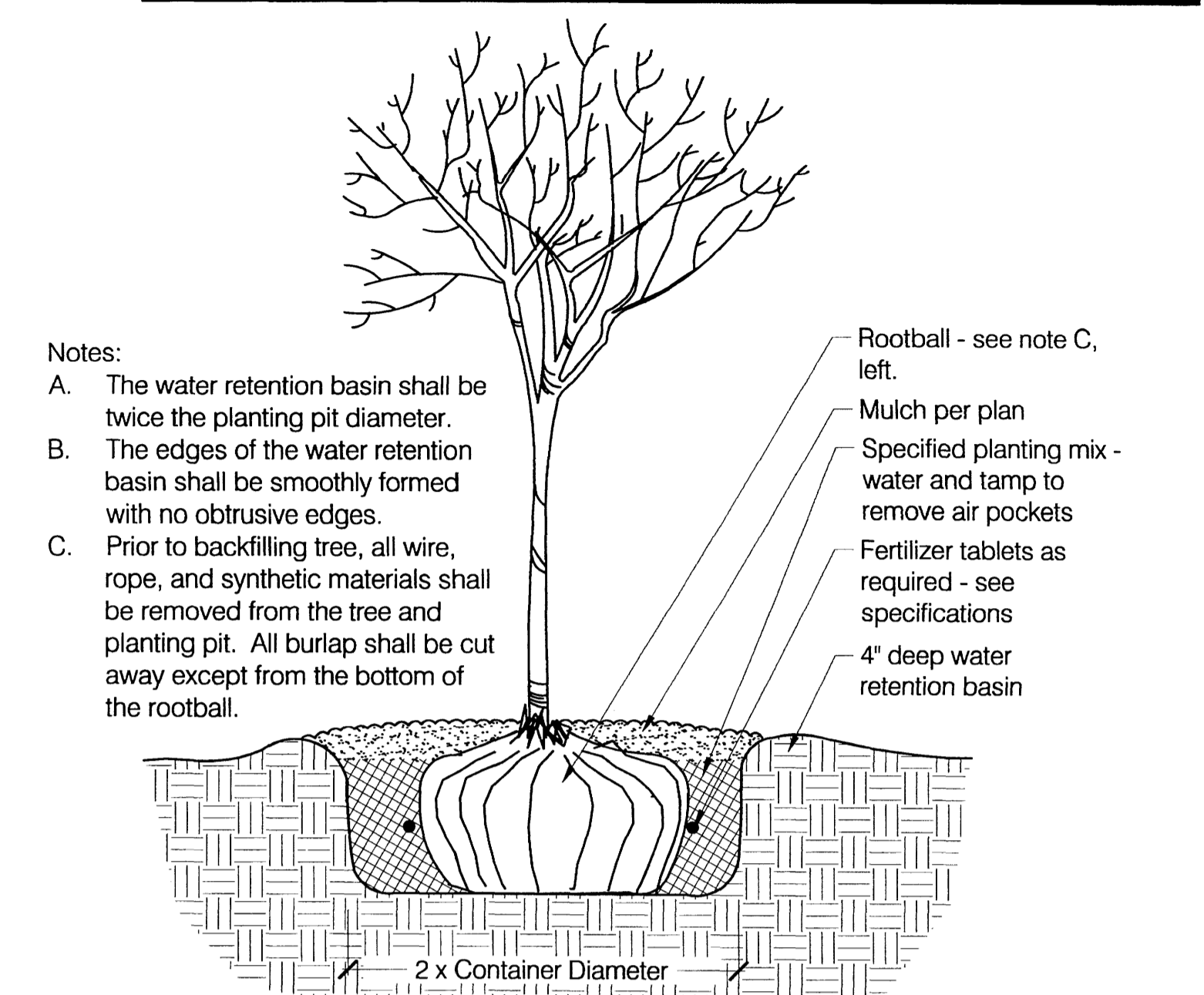
Qty.	Symbol	Scientific Name Common Name	Size	Installed Size Mature Size	Water Use
Trees					
8		Chilopsis linearis 'L. Hamilton' Lucretia Hamilton Desert Willow	2" cal.	8' ht. x 6' spr. 20' ht. x 25' spr.	Low +
16		Lagerstroemia indica x fauriei Crape Myrtle 'Zuni'	15 gal.	4' ht. x 3' spr. 9' ht. x 8' spr.	Medium
1		Pinus nigra Austrian Pine	6' - 8' ht.	6' min. ht. 35' ht. x 25' spr.	Medium
2		Pistacia chinensis Chinese Pistache	2" cal.	14' ht. x 6' spr. 60' ht. x 60' spr.	Medium +
2		Quercus muhlenbergii Chinquapin Oak	2" cal.	8' ht. x 4' spr. 45' ht. x 45' spr.	Medium
2		Prosopis pubescens Screwbean Mesquite	15-Gal.	8' ht. x 4' spr. 15' ht. x 15' spr.	Low +
Shrubs/Perennials					
25		Artemisia 'Powis Castle' Powis Castle Sage	1-Gal.	3' o.c. 3' ht. x 3' spr.	Low +
14		Buddleia davidii nanhoensis Butterfly Bush	5-Gal.	5' o.c. 5' ht. x 5' spr.	Medium
11		Caesalpinia gilliesii Desert Bird of Paradise	5-Gal.	6' o.c. 6' ht. x 6' spr.	Low
22		Cotoneaster dammeri Bearberry Cotoneaster	1-Gal.	9' o.c. 1' ht. x 9' spr.	Medium
8		Cytisus scoparius x dallimorei 'Lena' Lena's broom	1-Gal.	4' o.c. 4' ht. x 4' spr.	Low +
36		Fallugia paradoxa Apache Plume	1-Gal.	5' o.c. 5' ht. x 5' spr.	Low
16		Lavandula angustifolia English Lavender	1-Gal.	3' o.c. 3' ht. x 3' spr.	Medium
40		Penstemon ambiguus Bush (Sand) Penstemon	1-Gal.	2' o.c. 2' ht. x 2' spr.	Low
32		Rhus trilobata 'Prostrata' Prostrate Sumac	1-Gal.	6' o.c. 2' ht. x 6' spr.	Low +
41		Rosmarinus officinalis 'Arp' Arp Rosemary	1-Gal.	4' o.c. 4' ht. x 4' spr.	Low +
Ornamental Grasses					
8		Miscanthus sinensis 'Gracillimus' Maiden Hair Grass	5-Gal.	4' o.c. 5' ht. x 4' spr.	Low
21		Nolina texana Beargrass (Sacahuista)	5-Gal.	4' o.c. 4' ht. x 4' spr.	Low
Mulches and Boulders					
		Moss Rock Boulders,	3' X 3' (min.)		
		50:50 mix 2-4" / 5-12" Santa Ana Tan cobble			
		Santa Ana Tan Crusher Fines			

PHASE 1 (ONLY)
LANDSCAPE CALCULATIONS

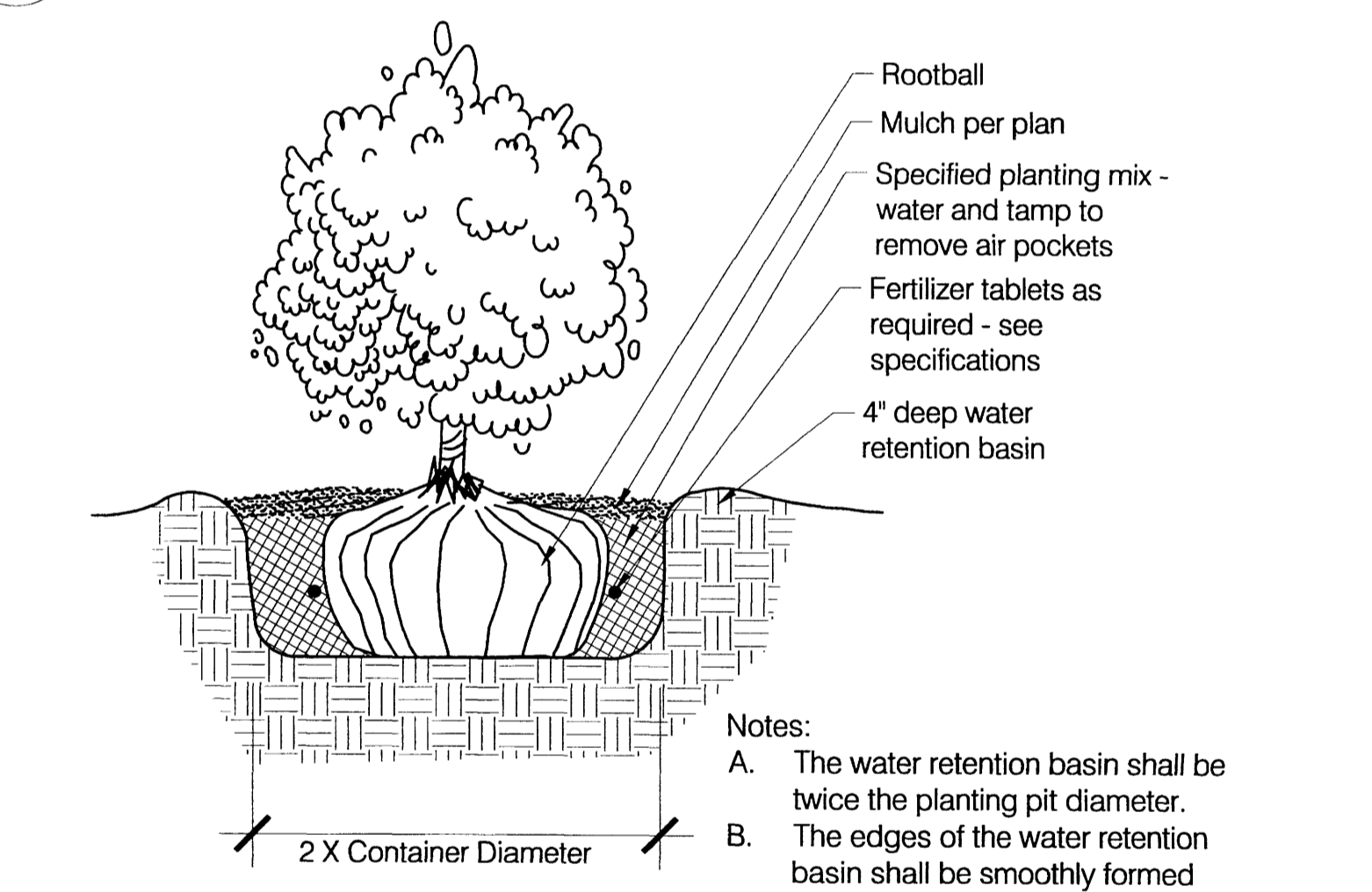
Site Area: (0.9 Ac.)	37,953 S.F.
Building Area:	-3,600 S.F.
Total:	34,353 S.F.
Required Landscape Area: (15%)	5,153 S.F.
Provided Landscape Area: (55%)	18,961 S.F.
Turf Area Allowed: (20%)	6,871 S.F.
Turf Area Provided: (0%)	0 S.F.
Required vegetative coverage (75% of landscape area):	14,221 S.F.
*Provided vegetative cover (based on mature size of plants):	26,576 S.F.

EASEMENT NOTES

- 1 Existing 10 foot utility easement as shown on the plat "Tracts B-9D thru B-9K" filed December 21, 1989 in Volume C40, Folio 75.
- 2 Existing 10 foot PNM and Mountain Bell easement filed 2/21/86, in Book 323A, Page 942.



1 TREE PLANTING DETAIL
Not to Scale



2 SHRUB PLANTING DETAIL
Not to Scale

GENERAL LANDSCAPE NOTES

- Prior to beginning work on the project, the Landscape Contractor shall review the project in the field with the Owner's Representative.
- If discrepancies occur between the drawings and the site, the Landscape Contractor shall notify the Owner's Representative for clarification prior to proceeding on that portion of work.
- All planting areas are to have weeds and competitive vegetation removed prior to preparation for planting.
- Plant quantities are provided for Contractor's convenience only, plans shall take precedence.
- The Owner's Representative shall approve all plant material prior to planting. In addition, the Owner's Representative reserves the right to refuse any plant material deemed unacceptable. The Owner's Representative is to approve any and all substitutions.
- It is the Landscape Contractor's responsibility to locate all underground utilities prior to commencement of planting operations.
- Planting areas shall be top dressed with 3" layer of 1/2" Santa Ana Tan gravel over filter fabric unless noted otherwise - see plant legend for identification of other mulches.

LANDSCAPE COVERAGE

- All landscape areas, including buffer strips adjacent to major streets, shall contain live vegetative material covering at least 75% of the area.

STREET TREES

- Street trees along Ellison Dr. have been provided at an average spacing of 25' o.c. Five varieties (Chinquapin Oak, Chinese Pistache, Crape Myrtle (Zuni), Screwbean Mesquite, and Desert Willow) have been used to provide variety in color, texture, and form.

IRRIGATION SYSTEM

- Irrigation system standards outlined in the Water Conservation Landscaping and Water Waste Ordinance shall be strictly adhered to. A fully automated irrigation system will be used to irrigate trees, shrubs, perennials and ornamental grasses.
- Irrigation system to consist of Rain Bird 1400 series bubblers and Rain Bird PEB Series valves; and controlled by a Rain Bird ESP-LX series controller. Trees shall be zoned separately from shrubs, perennials and grasses.

WATER HARVESTING

- Curb cuts in the parking islands and vegetated swales in landscaped areas will be incorporated to allow for water harvesting of storm runoff to supplement irrigation. Cobbled areas shown on plan will be graded as basins and swales to capture and direct storm runoff.

STATEMENT OF NO WATER WASTE

- The Landscape Plan for '6th Area Command Police Substation' has no high water use turf. All landscaping shall be in compliance with the Water Conservation Landscaping and Water Waste Ordinance.

MAINTENANCE RESPONSIBILITY

- Maintenance of the landscaping and the irrigation system for this City of Albuquerque facility, including the areas within the public right of way, shall be the responsibility of the City of Albuquerque.

1 LANDSCAPE PLAN (PHASE 1) - APD 6th Area Command
Scale: 1" = 30'-0"



CONSENSUS PLANNING, INC.
Planning / Landscape Architecture
302 Eighth Street NW
Albuquerque, NM 87102
(505) 764-9801 Fax 842-5495
e-mail: cp@consensusplanning.com

OWNER
CITY OF ALBUQUERQUE
ALBUQUERQUE POLICE DEPARTMENT
400 Roma Avenue NW
Albuquerque, New Mexico 87103

SCALE
1" = 30'-0"

RMKM: PROJECT NO.
0604 APD 6th Area Command

DRAWING FILE NO.
1187-07 EPC Landscape.DWG

DATE
SUMMER 2007

PROJECT
6th AREA COMMAND POLICE SUBSTATION

PROJECT MANAGER
RAMON J. SARASON

DRAWN BY
RMKM

CITY OF ALBUQUERQUE PUBLIC WORKS DEPARTMENT ENGINEERING DEVELOPMENT GROUP			
TITLE: LANDSCAPE PLAN - PHASE 1			
Design Review Committee	City Engineer Approval	MO./DAY/YR.	MO./DAY/YR.
City Project No. #-----	Zone Map No. A-13-Z	Sheet * L1.1	Of **

PLANT LEGEND

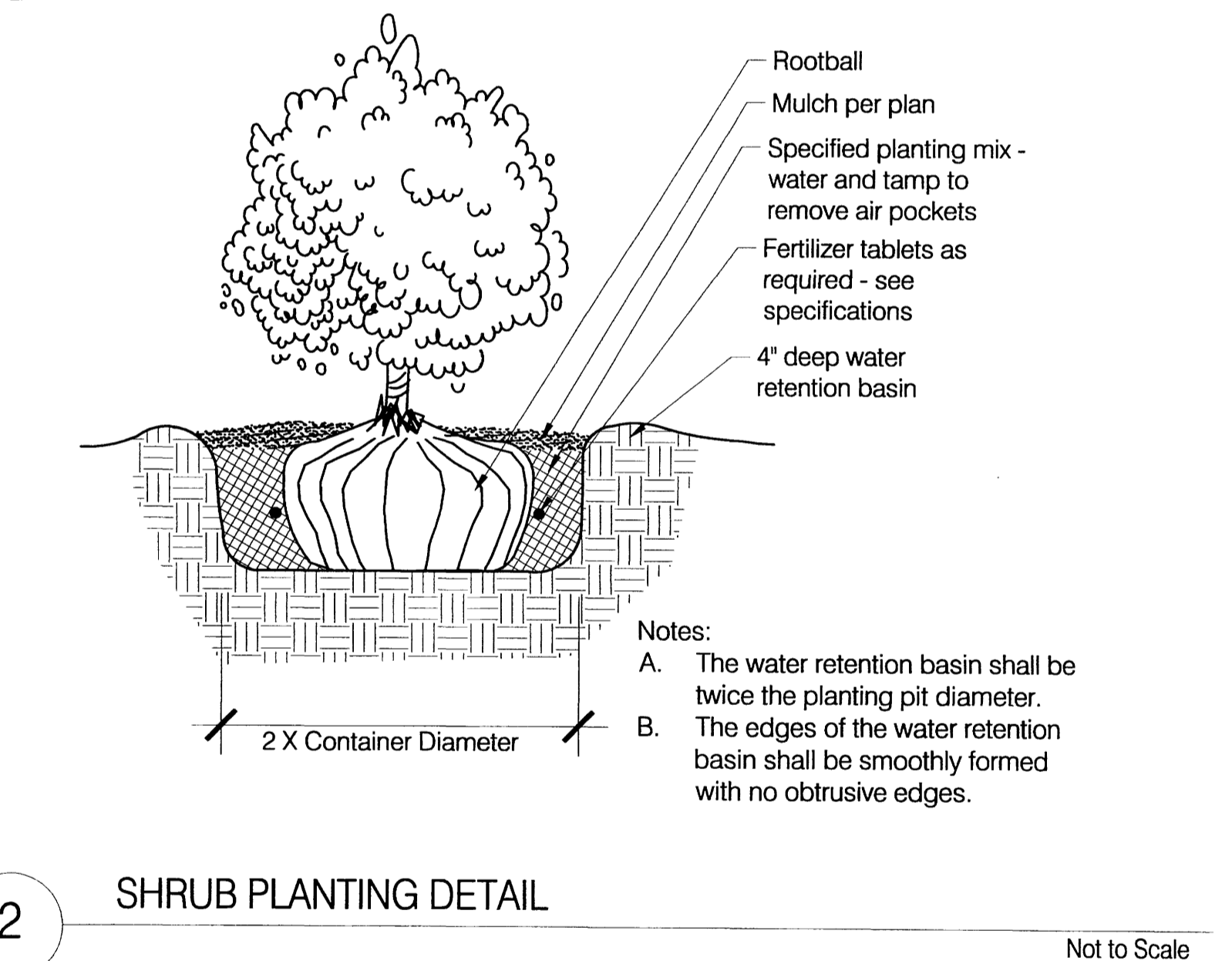
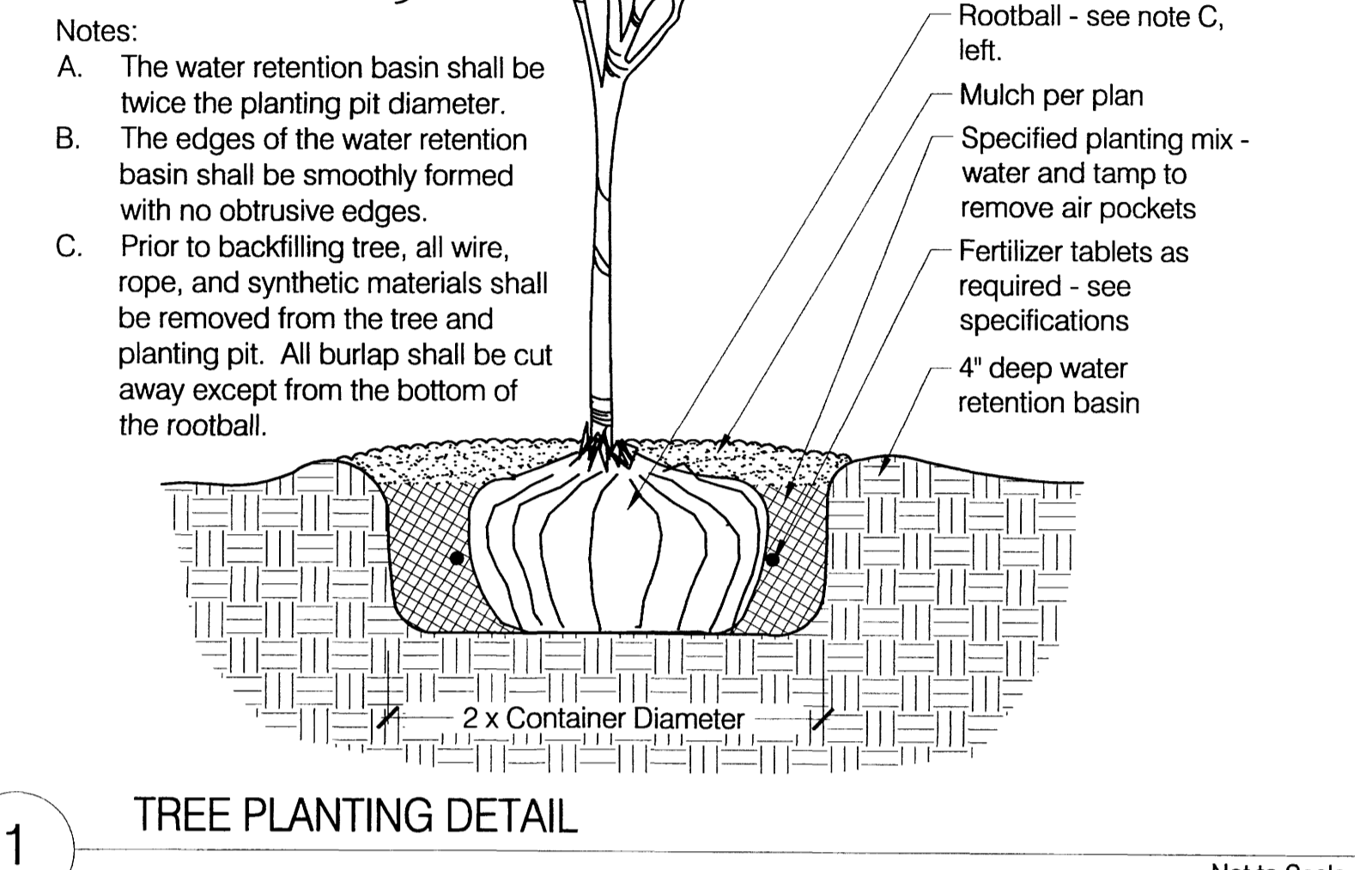
Qty.	Symbol	Scientific Name Common Name	Size	Installed Size Mature Size	Water Use
Trees					
14		Chilopsis linearis 'L. Hamilton' Lucretia Hamilton Desert Willow	2" cal.	8' ht. x 6' spr. 20' ht. x 25' spr.	Low +
40		Lagerstroemia indica x fauriei Crape Myrtle 'Zuni'	15 gal.	4' ht. x 3' spr. 9' ht. x 8' spr.	Medium
12		Pinus nigra Austrian Pine	6' - 8' ht.	6 min. ht. 35' ht x 25' spr.	Medium
11		Pistacia chinensis Chinese Pistache	2" cal.	14' ht. x 6' spr. 60' ht x 60' spr.	Med. +
13		Quercus muhlenbergii Chinquapin Oak	2" cal.	8' ht x 4' spr. 45' ht. x 45' spr.	Medium
10		Prosopis pubescens Screwbean Mesquite	15-Gal.	8' ht. x 4' spr. 15' ht. x 15' spr.	Low +
Shrubs/Perennials					
41		Artemisia 'Powis Castle' Powis Castle Sage	1-Gal.	3' o.c. 3' ht. x 3' spr.	Low +
34		Buddleia davidii nanhoensis Butterfly Bush	5-Gal.	5' o.c. 5' ht. x 5' spr.	Medium
45		Caesalpinia gilliesii Desert Bird of Paradise	5-Gal.	6' o.c. 6' ht. x 6' spr.	Low
82		Cotoneaster dammeri Bearberry Cotoneaster	1-Gal.	9' o.c. 1' ht. x 9' spr.	Medium
18		Cytisus scoparius x dallimorei 'Lena' Lena's broom	1-Gal.	4' o.c. 4' ht. x 4' spr.	Low +
67		Fallugia paradoxa Apache Plume	1-Gal.	5' o.c. 5' ht. x 5' spr.	Low
74		Lavandula angustifolia English Lavender	1-Gal.	3' o.c. 3' ht. x 3' spr.	Medium
69		Penstemon ambiguus Bush (Sand) Penstemon	1-Gal.	2' o.c. 2' ht. x 2' spr.	Low
83		Rhus trilobata 'Prostrata' Prostrate Sumac	1-Gal.	6' o.c. 2' ht. x 6' spr.	Low +
145		Rosmarinus officinalis 'Arp' Arp Rosemary	1-Gal.	4' o.c. 4' ht. x 4' spr.	Low +
Ornamental Grasses					
117		Miscanthus sinensis 'Gracillimus' Maiden Hair Grass	5-Gal.	4' o.c. 5' ht. x 4' spr.	Low
46		Nolina texana Beargrass (Sacahuista)	5-Gal.	4' o.c. 4' ht. x 4' spr.	Low
Mulches and Boulders					
		Moss Rock Boulders,	3' X 3' (min.)		
		50:50 mix 2-4" / 5-12" Santa Ana Tan cobble			
		Santa Ana Tan Crusher Fines			

LANDSCAPE CALCULATIONS

Site Area: (3.4 Ac.)	148,513 S.F.
Building Area:	-30,182 S.F.
Total:	118,331 S.F.
Required Landscape Area: (15%)	17,778 S.F.
Provided Landscape Area: (40%)	46,831 S.F.
Turf Area Allowed: (20%)	3,556 S.F.
Turf Area Provided: (0%)	0 S.F.
Required vegetative cover (75% of landscape area):	35,123 S.F.
Provided vegetative cover (based on mature size of plants):	119,981 S.F.

EASEMENT NOTES

- Existing 10 foot utility easement as shown on the plat "Tracts B-9D thru B-9K" filed December 21, 1989 in Volume C40, Folio 75.
- Existing 10 foot PNM and Mountain Bell easement filed 2/21/86, in Book 323A, Page 942.



GENERAL LANDSCAPE NOTES

- Prior to beginning work on the project, the Landscape Contractor shall review the project in the field with the Owner's Representative.
- If discrepancies occur between the drawings and the site, the Landscape Contractor shall notify the Owner's Representative for clarification prior to proceeding on that portion of work.
- All planting areas are to have weeds and competitive vegetation removed prior to preparation for planting.
- Plant quantities are provided for Contractor's convenience only, plans shall take precedence.
- The Owner's Representative shall approve all plant material prior to planting. In addition, the Owner's Representative reserves the right to refuse any plant material deemed unacceptable. The Owner's Representative is to approve any and all substitutions.
- It is the Landscape Contractor's responsibility to locate all underground utilities prior to commencement of planting operations.
- Planting areas shall be top dressed with 3" layer of 1/2" Santa Ana Tan gravel over filter fabric unless noted otherwise - see plant legend for identification of other mulches.

LANDSCAPE COVERAGE

- All landscape areas, including buffer strips adjacent to major streets, shall contain live vegetative material covering at least 75% of the area.

STREET TREES

- Street trees along Ellison Dr. have been provided at an average spacing of 25' o.c. Five varieties (Chinquapin Oak, Chinese Pistache, Crape Myrtle (Zuni), Screwbean Mesquite, and Desert Willow) have been used to provide variety in color, texture, and form.

IRRIGATION SYSTEM

- Irrigation system standards outlined in the Water Conservation Landscaping and Water Waste Ordinance shall be strictly adhered to. A fully automated irrigation system will be used to irrigate trees, shrubs, perennials and ornamental grasses.
- Irrigation system to consist of Rain Bird 1400 series bubblers and Rain Bird PEB Series valves; and controlled by a Rain Bird ESP-LX series controller. Trees shall be zoned separately from shrubs, perennials and grasses.

WATER HARVESTING

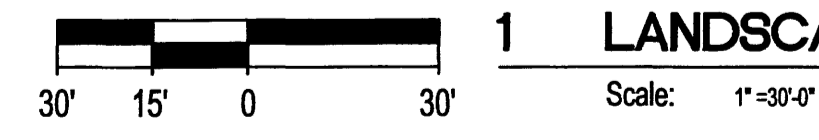
- Curb cuts in the parking islands and vegetated swales in landscaped areas will be incorporated to allow for water harvesting of storm runoff to supplement irrigation. Cobbled areas shown on plan will be graded as basins and swales to capture and direct storm runoff.

STATEMENT OF NO WATER WASTE

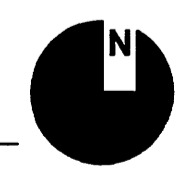
- The Landscape Plan for '6th Area Command Police Substation' has no high water use turf. All landscaping shall be in compliance with the Water Conservation Landscaping and Water Waste Ordinance.

MAINTENANCE RESPONSIBILITY

- Maintenance of the landscaping and the irrigation system for this City of Albuquerque facility, including the areas within the public right of way, shall be the responsibility of the City of Albuquerque.



LANDSCAPE PLAN (PHASE 2) - APD 6th Area Command



CONSENSUS PLANNING, INC.
Planning / Landscape Architecture
302 Eighth Street NW
Albuquerque, NM 87102
(505) 764-9801 Fax 842-5495
e-mail: cp@consensusplanning.com

OWNER
**CITY OF ALBUQUERQUE
ALBUQUERQUE POLICE DEPARTMENT**
400 Roma Avenue NW
Albuquerque, New Mexico 87103

PROJECT
6th AREA COMMAND POLICE SUBSTATION

D.R.B. SUBMITTAL

SCALE
1" = 30'-0"

DATE
SUMMER 2007

PROJECT MANAGER
RAMON J. SARASON

DRAWN BY
RKKKA

CITY OF ALBUQUERQUE PUBLIC WORKS DEPARTMENT ENGINEERING DEVELOPMENT GROUP			
TITLE: LANDSCAPE PLAN - PHASE 2			
Design Review Committee	City Engineer Approval	Last Design Update	MO./DAY/YR.
			MO./DAY/YR.
City Project No. #-----	Zone Map No. DRB Submittal	Sheet # A-13-Z	Of ## L1.2

GENERAL NOTES

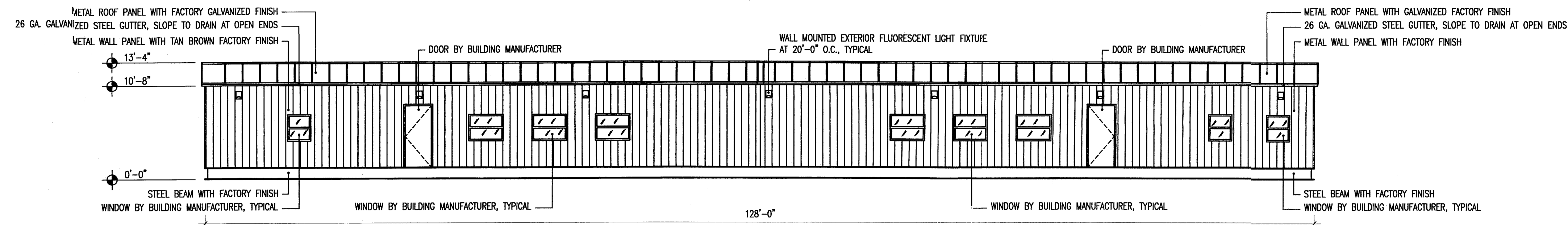
COLORS
ALL FINAL COLORS ARE TO BE COMPATIBLE WITH THE ADJACENT FIRE STATION 21 AND SELECTED FROM THE STANDARD RANGE OF MANUFACTURER'S COLORS AND TEXTURES

WALLS
24 GA. COLOR STEEL WALL PANELS WITH TEXTURED TAN BROWN FACTORY FINISH

ROOFING
18 GA. UNPAINTED GALVALUME STEEL INTERLOCKING SELF-FRAMING ROOF PANELS

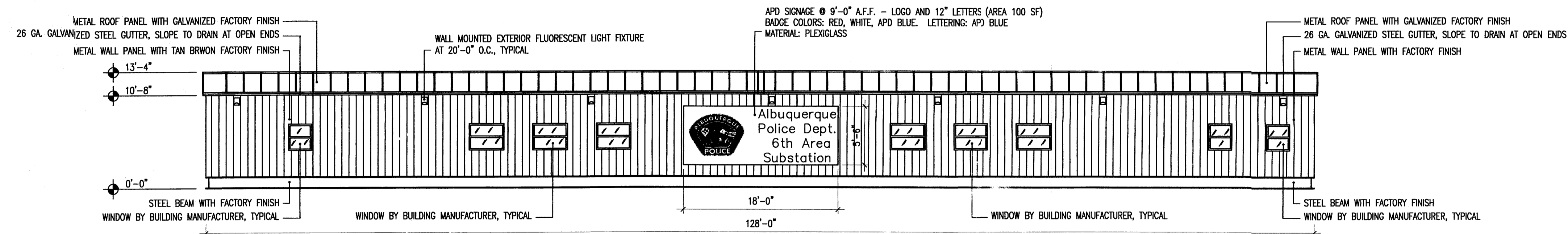
WINDOWS
SINGLE HUNG, INSULATED, DOUBLE GLAZED CLEAR GLASS WITH SCREENS

DOORS
HOLLOW METAL DOOR WITH HOLLOW METAL FRAME. FINISH TO MATCH METAL WALL PANELS



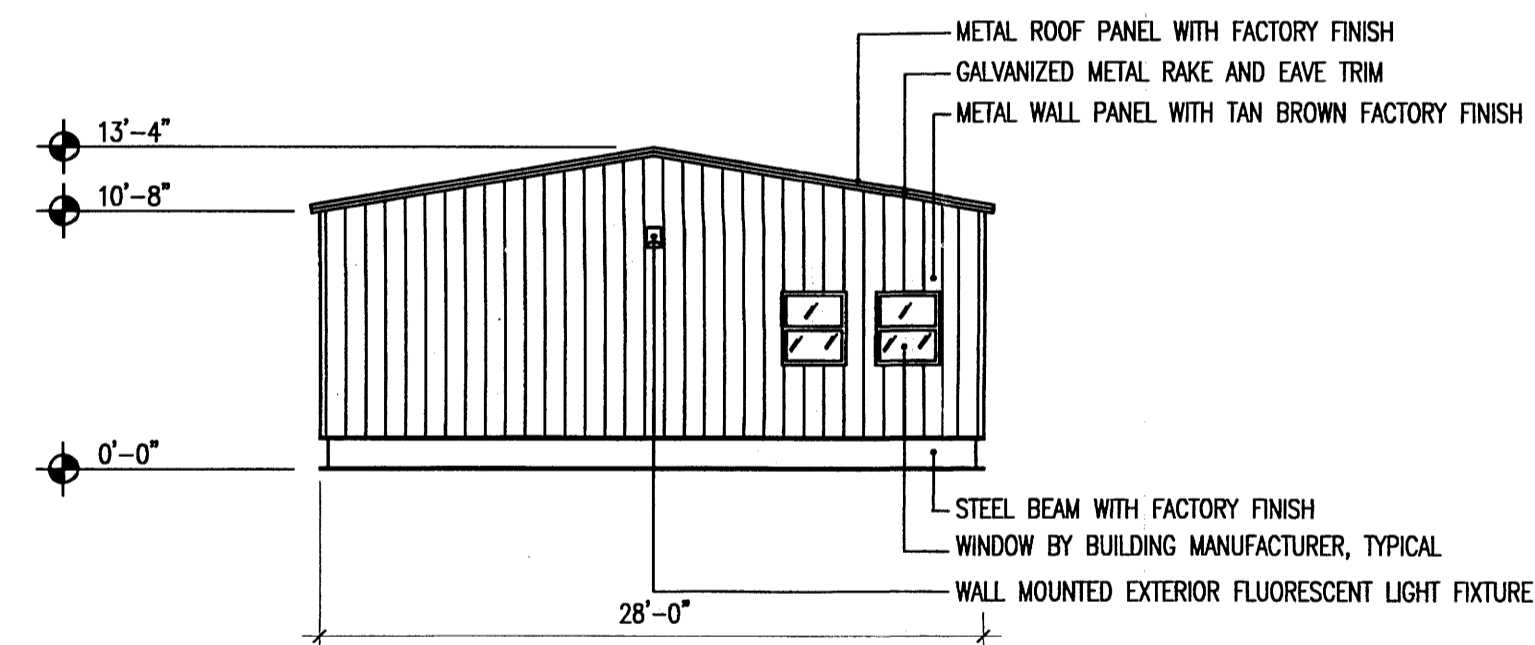
1 NORTH ELEVATION

Scale: 1/8" = 1'-0"



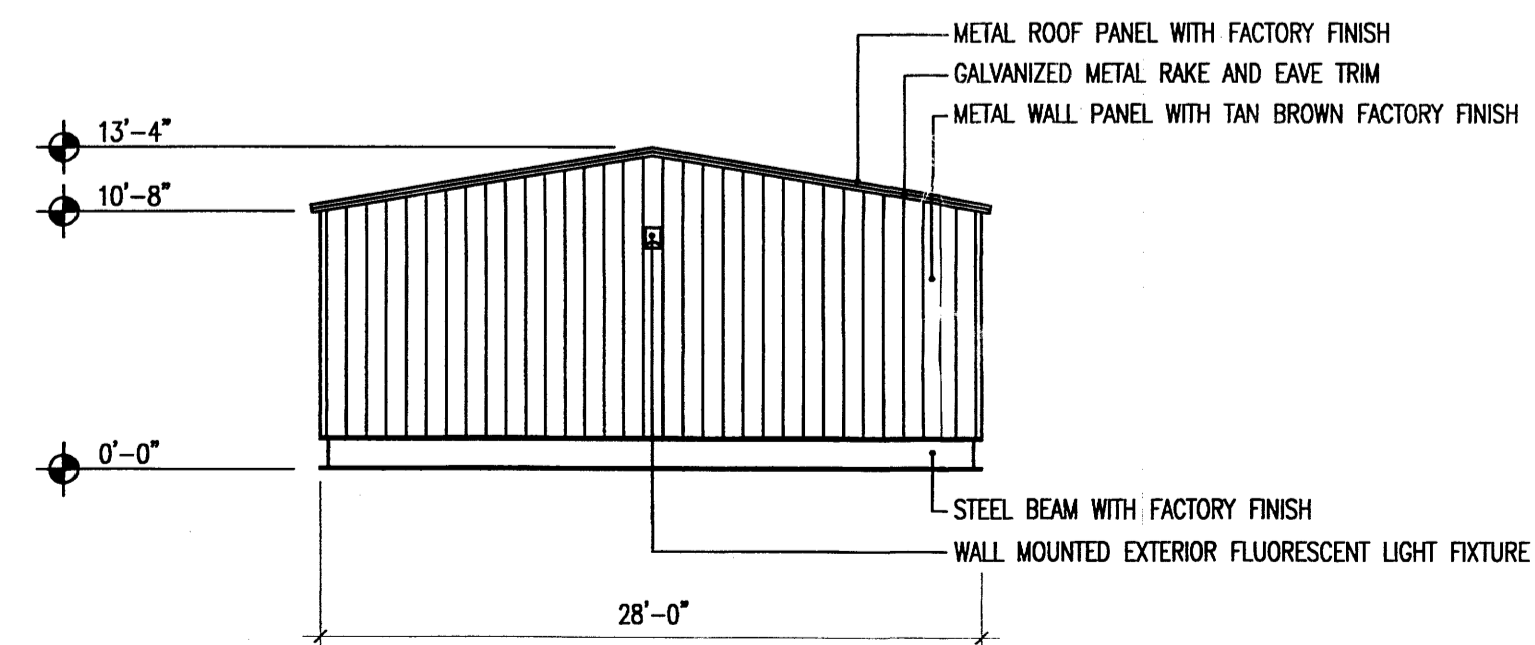
2 SOUTH ELEVATION

Scale: 1/8" = 1'-0"



3 EAST ELEVATION

Scale: 1/8" = 1'-0"



4 WEST ELEVATION

Scale: 1/8" = 1'-0"

OWNER
CITY OF ALBUQUERQUE
ALBUQUERQUE POLICE DEPARTMENT
400 Roma Avenue NW
Albuquerque, New Mexico 87103

PROJECT
6th AREA COMMAND POLICE SUBSTATION

E.P.C. SUBMITTAL

SCALE
AS NOTED

RANK: PROJECT NO.
0604 APD Sixth Area Command

DRAWING FILE NO.
*.DWG

DATE
AUGUST 2, 2007

PROJECT MANAGER
RAMON J. SARASON, AIA, LEED

DRAWN BY
RMKM

CITY OF ALBUQUERQUE PUBLIC WORKS DEPARTMENT ENGINEERING DEVELOPMENT GROUP			
TITLE: ARCHITECTURAL ELEVATIONS - TEMPORARY BUILDING			
Design Review Committee	City Engineer Approval	Last Design Update	MO./DAY/YR. November 1, 2007
City Project No. #1006721 EPC Submittal	Zone Map No. A-13-Z	Sheet *	Of ** A1.3

GENERAL NOTES

1) BUILDING SIGNAGE WILL BE ILLUMINATED BY DOWN LIGHTING.

MATERIALS:

COLORS
ALL FINAL COLORS ARE TO MATCH THOSE AT THE ADJACENT FIRE STATION 21 AND SELECTED FROM THE STANDARD RANGE OF MANUFACTURER'S COLORS AND TEXTURES

EXPOSED STRUCTURAL STEEL
PAINT WHITE COLOR, TYPICAL

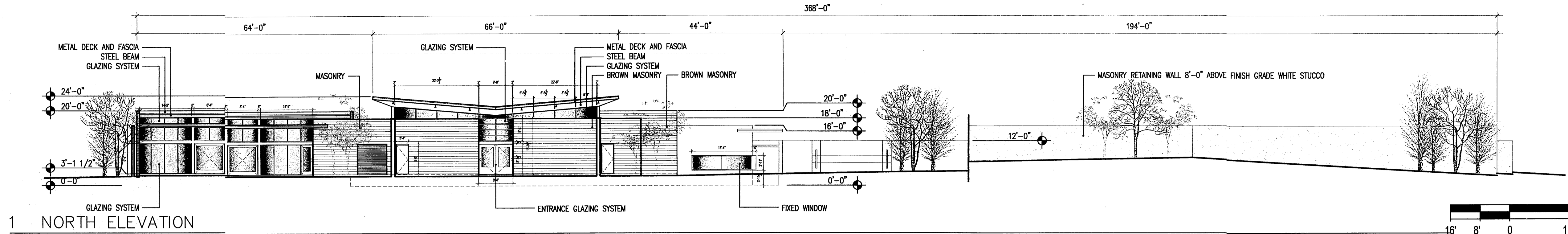
MASONRY WALLS
CONCRETE MASONRY UNITS SELECTED FROM MANUFACTURER'S STANDARD RANGE OF COLORS AND TEXTURES TO MATCH CIBOLA BROWN EXPOSED MASONRY WALLS AT FIRE STATION 21

STUCCO COVERED MASONRY WALL
PORTLAND CEMENT PLASTER WITH LIGHT WHITE COLOR SYNTHETIC FINISH COAT

METAL DECK AND FASCIA
PAINT WHITE COLOR, TYPICAL

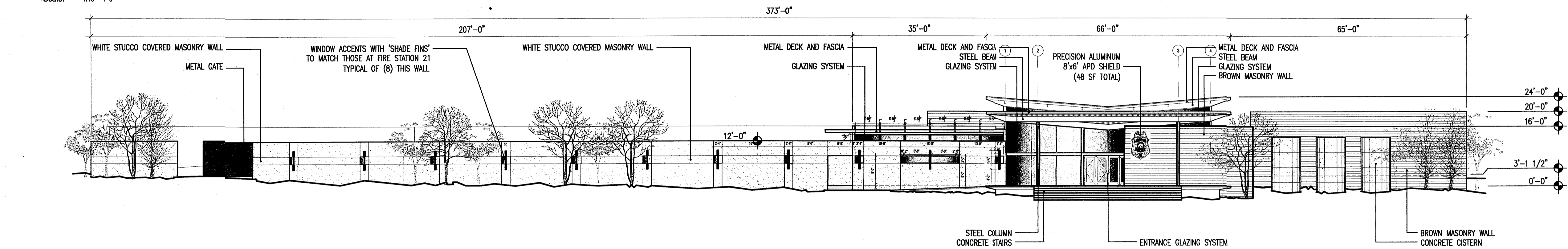
GLAZING SYSTEM
ALUMINUM STOREFRONT GLAZING SYSTEM WITH INSULATED 50% SOLAR GREY GLASS UNITS (ANODIZED FINISH)

FIXED WINDOWS
ALUMINUM WINDOW SYSTEM WITH 50% SOLAR GREY GLASS UNITS (ANODIZED FINISH)



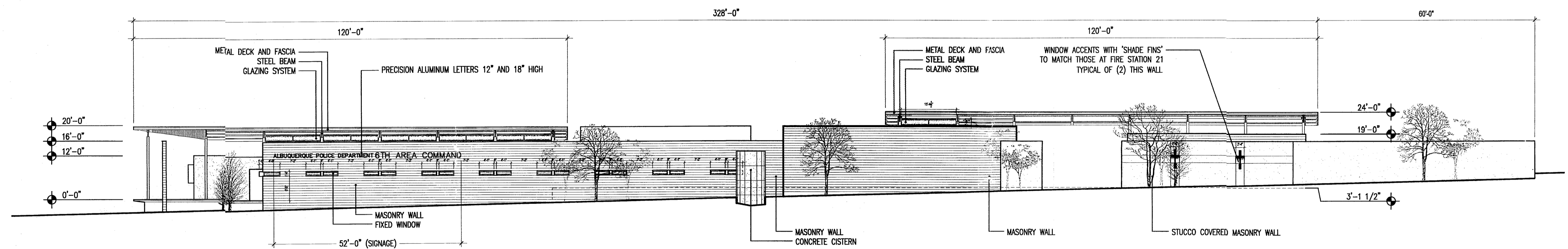
1 NORTH ELEVATION

Scale: 1/16" = 1'-0"



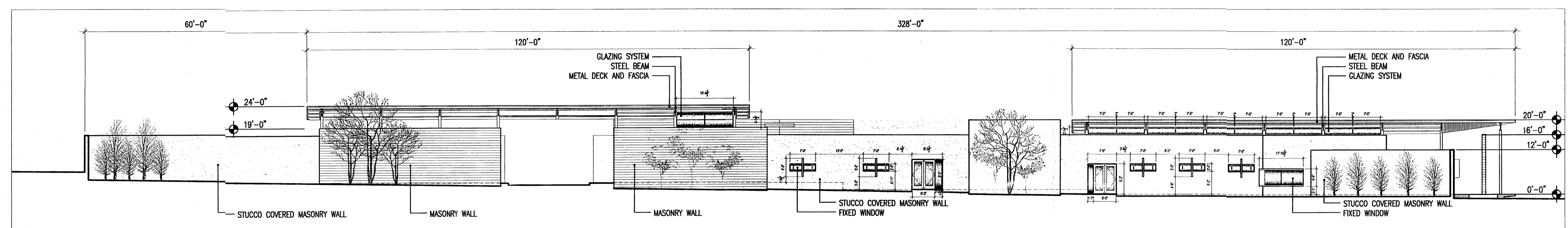
2 SOUTH ELEVATION

Scale: 1/16" = 1'-0"



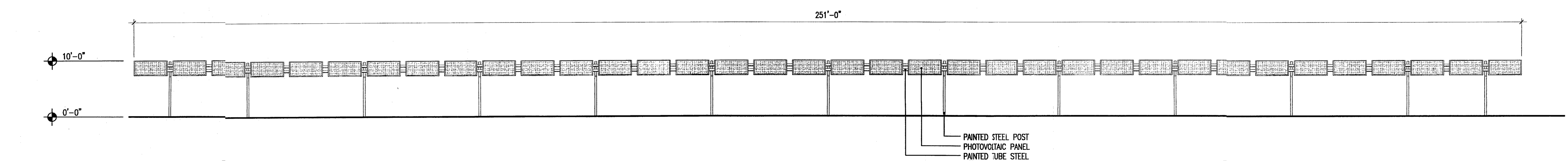
3 EAST ELEVATION

Scale: 1/16" = 1'-0"



4 WEST ELEVATION

Scale: 1/16" = 1'-0"



5 SOLAR PHOTOVOLTAIC GRID-TIED SYSTEM ELEVATION

Scale: 3/32" = 1'-0"

OWNER
CITY OF ALBUQUERQUE
ALBUQUERQUE POLICE DEPARTMENT
400 Roma Avenue NW
Albuquerque, New Mexico 87103

SCALE
AS NOTED

RMKM PROJECT NO.
0604 APD Sixth Area Command

DRAWING FILE NO.
*.DWG

DATE
AUGUST 2, 2007

PROJECT
6th AREA COMMAND POLICE SUBSTATION

PROJECT MANAGER
RAMON J. SARASON, AIA, LEED

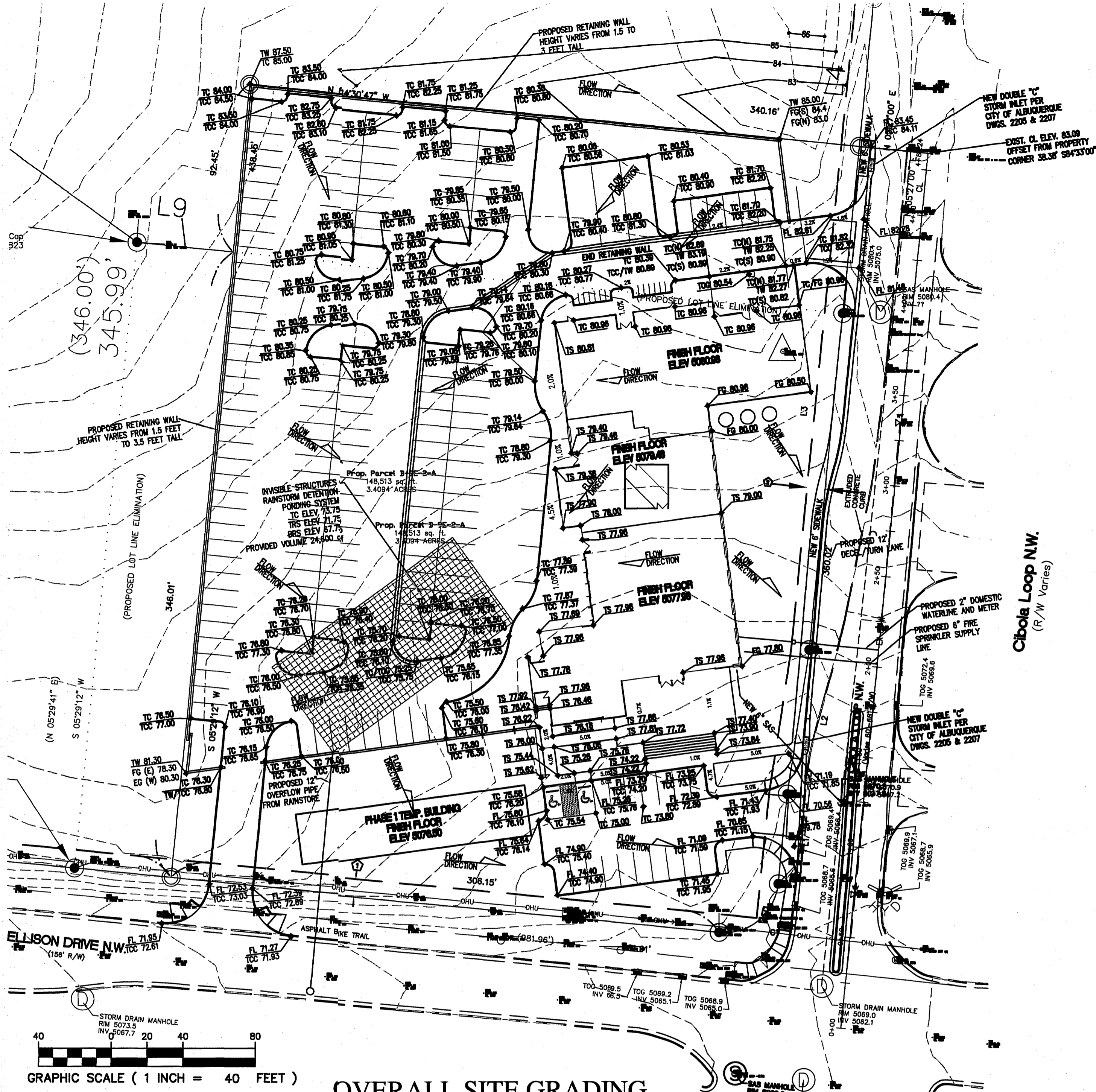
DRAWN BY
RMKM

E.P.C. SUBMITTAL

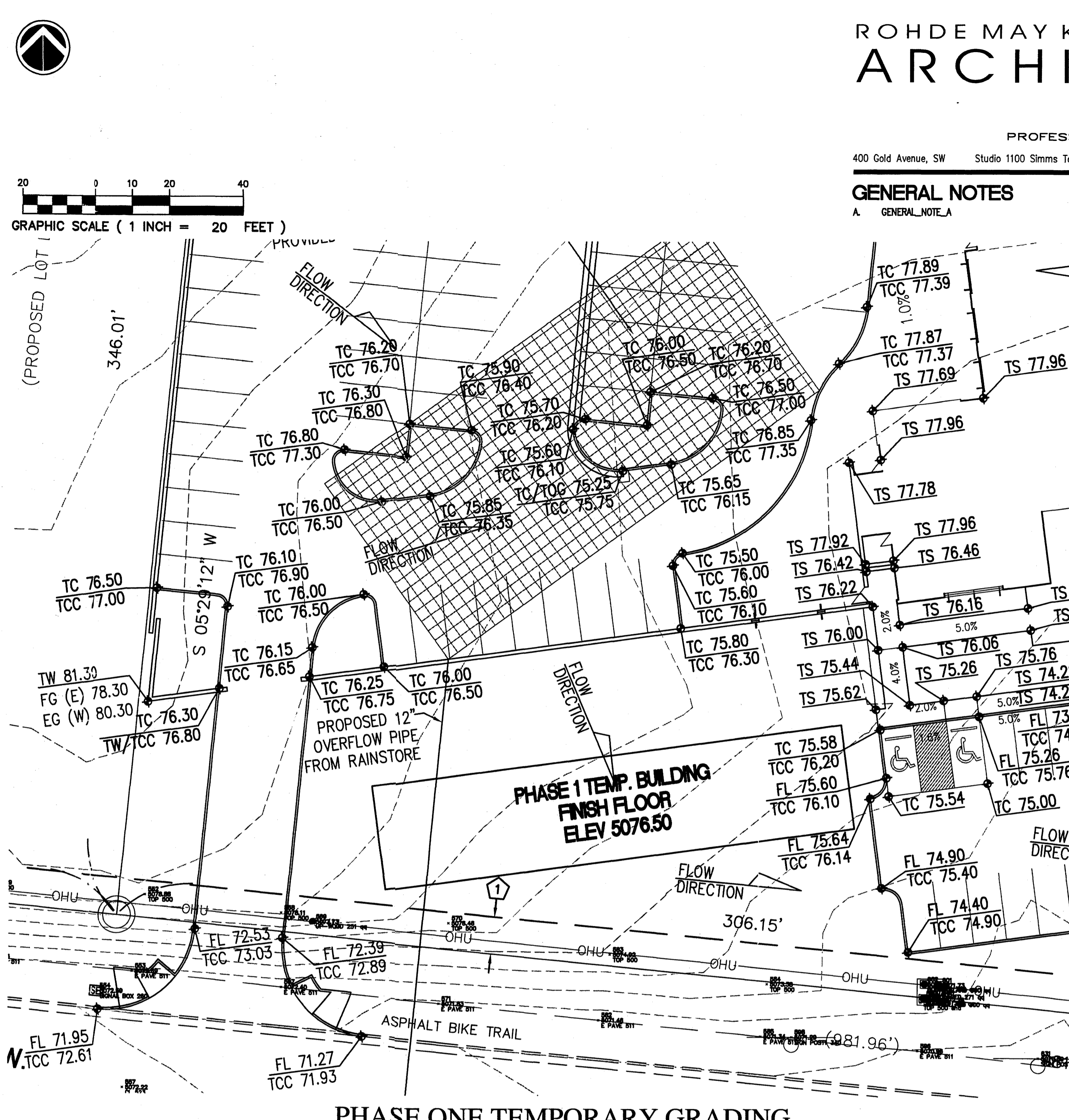
CITY OF ALBUQUERQUE PUBLIC WORKS DEPARTMENT ENGINEERING DEVELOPMENT GROUP			
TITLE: ARCHITECTURAL ELEVATIONS			
Design Review Committee	City Engineer Approval	Update	MO./DAY/YR.
		Last Design	November 1, 2007
City Project No. #1006721	EPC Submittal	Zone Map No. A-13-Z	Sheet * Of ** A1.4

GENERAL NOTES

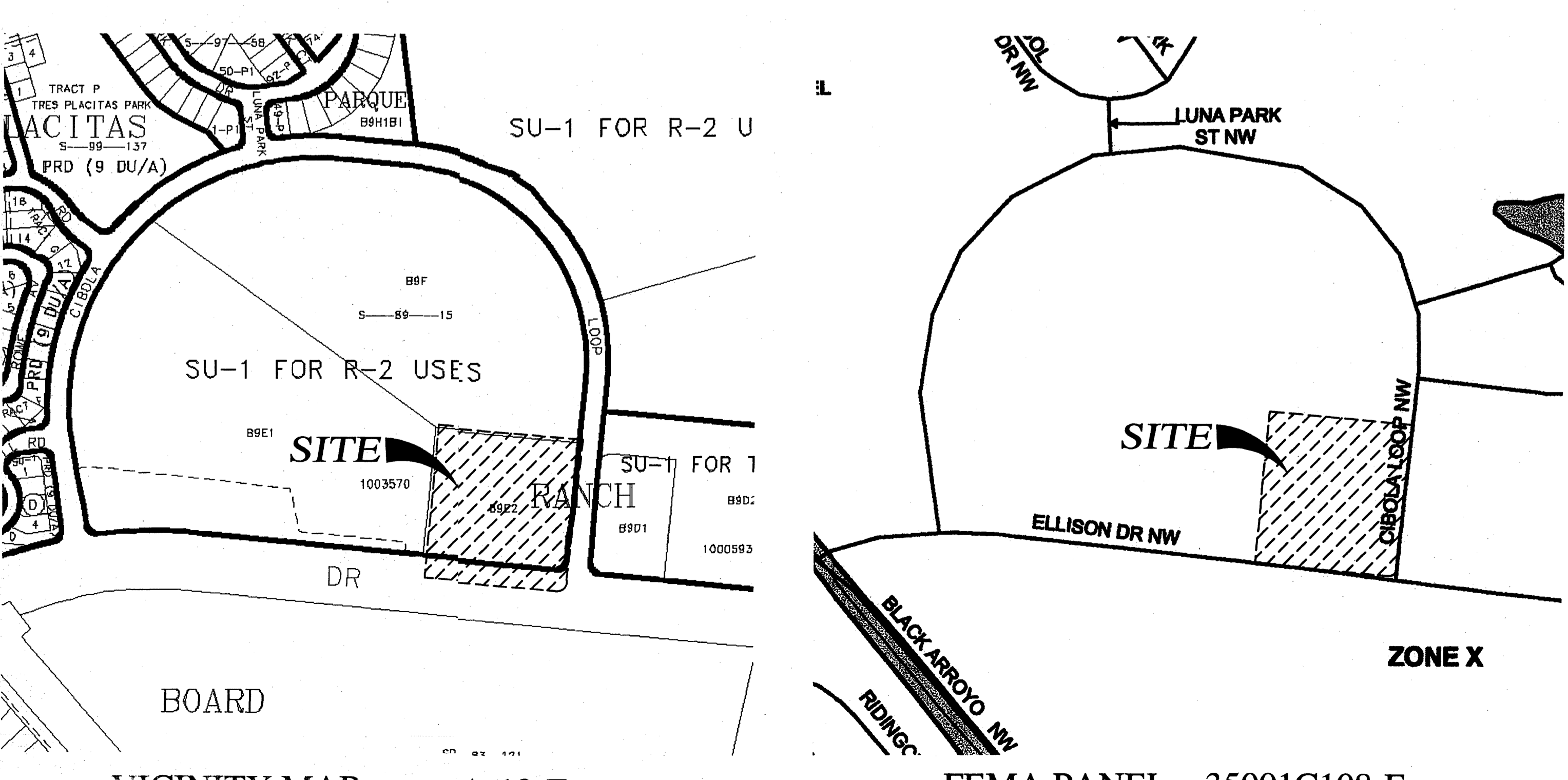
A. GENERAL_NOTE_A



OVERALL SITE GRADING



PHASE ONE TEMPORARY GRADING



100-YEAR HYDROLOGIC CALCULATIONS

BASIN #	AREA (acre)	LAND TREATMENT				WEIGHTED E (in)	V (6-hr) (acre-ft)	V (6-hr) (cu-ft)	V (24 hour) (acre-ft)	V (24 hour) (cu-ft)	Q (cfs)
		A (%)	B (%)	C (%)	D (%)						
EXISTING CONDITIONS											
ONSITE	3.4094	100.00	0.00	0.00	0.44	0.13	5,445	0.13	5,445	4.40	
PROPOSED CONDITIONS											
ONSITE	3.4094	0.00	14.00	14.30	71.70	1.65	0.47	20,394	0.56	24,476	13.05
EXCESS PRECIP.		0.44	0.67	0.99	1.97	E _i (in)					
PEAK DISCHARGE		1.29	2.03	2.87	4.37	Q _{pi} (cfs)					

WEIGHTED E (in) = (E_a)(%A) + (E_b)(%B) + (E_c)(%C) + (E_d)(%D)
 V_{6-hr} (acre-ft) = (WEIGHTED E)(AREA)/12
 V_{24-hr} (cu-ft) = V_{6-hr} + (A_o)(P_{10day} - P_{6-hr})/12
 Q (cfs) = (Q_{pi})(A_o) + (Q_{pi})(A_o) + (Q_{pi})(A_o) + (Q_{pi})(A_o)

ZONE = 1
 P_{6-hr} (in.) = 2.20
 P_{24-hr} (in.) = 2.66
 P_{10day} (in.) = 3.67

DRAINAGE CONCEPT:
 DRAINAGE INFRASTRUCTURE IN THE IMMEDIATE AREA OF THIS PROJECT IS LIMITED ON AVAILABLE CAPACITY SO THIS PLAN PROPOSES TO LIMIT OFFSITE DISCHARGE OF STORMWATER TO HISTORIC LEVELS AND TO REDUCE SEDIMENT TRANSPORT FROM THE SITE. THIS PLAN PROPOSES TO ROUTE STORMWATER GENERATED FROM THE BUILDING ROOFS AND WEST PARKING LOTS TO AN UNDERGROUND DETENTION FACILITY CONSTRUCTED FROM INVISIBLE STRUCTURES RAINSTORE MODULES. THIS PROPOSED FACILITY, LOCATED UNDER THE WEST PARKING LOT PROVIDES THE CAPACITY TO CONTAIN THE RUNOFF FROM A 100-YEAR, 24-HOUR STORM. AN OVERFLOW PIPE IS PROPOSED TO CONVEY EXCESS RUNOFF FROM THE RAINSTORE FACILITY TO THE EXISTING STORM DRAIN IN ELLISON. RUNOFF FROM THE EAST LANDSCAPE AREA AND PUBLIC PARKING LOT WILL DISCHARGE DIRECTLY TO CIBOLA LOOP VIA THE PUBLIC PARKING LOT DRIVEPAD IN THE PHASE 1 CONSTRUCTION. WHEN THE TEMPORARY BUILDING IS REMOVED DURING PHASE II CONSTRUCTION, THE SITE WILL BE REGRADED TO PROVIDE A WATER HARVESTING AREA TO FURTHER HELP ELIMINATE OFFSITE DISCHARGE FROM THE SITE.

OWNER
 CITY OF ALBUQUERQUE
 ALBUQUERQUE POLICE DEPARTMENT
 400 Roma Avenue NW
 Albuquerque, New Mexico 87103

PROJECT
6th AREA COMMAND POLICE SUBSTATION

D.R.B SUBMITTAL

SCALE

DATE
 OCTOBER 2007

PROJECT MANAGER
 RAMON J. SARASON

DRAWN BY

CITY OF ALBUQUERQUE
 PUBLIC WORKS DEPARTMENT
 ENGINEERING DEVELOPMENT GROUP

TITLE: CONCEPTUAL GRADING PLAN and UTILITY PLAN

Design Review Committee	City Engineer Approval	MO./DAY/YR.	MO./DAY/YR.

City Project No. #----- DRB Submittal Zone Map No. A-13-Z Sheet Of **