

LEGEND

- ⊙ Storm Drain Manhole
- ⊙ Sanitary Sewer Manhole
- SAS- Sanitary Sewer Line
- SD- Storm Drain Line
- ⊙ Storm Drain Inlet
- ⊙ Power Pole
- Guy Wire
- OHW- Overhead Wires
- E- Electric Line
- COM- Communications Line
- G- Gas Line
- W- Water Line
- ⊙ Sanitary Sewer Clean-out
- ⊙ Water Meter
- ⊙ Water Valve
- ⊙ Hydrant
- ⊙ Telephone Pedestal
- ⊙ WROUGHT IRON SECURITY FENCE
- ⊙ Light Pole
- ⊙ Flood Light
- ⊙ Bollard
- ⊙ Concrete Symbol
- ⊙ Telephone Manhole
- ⊙ Water Manhole
- RTDM Raised Truncated Dome Mat

PROJECT NUMBER: 100616/DECC-4002
 APPLICATION NUMBER: [Blank]

Is an Infrastructure List required? () YES () NO If yes, then a set of approved DRP plans with a work order is required for any construction within Public Right-of-Way or for construction of public improvements.

DEP SITE DEVELOPMENT PLAN SIGNOFF APPROVAL

DATE: 05-15-13	DATE: 05-15-13
DATE: 05-15-13	DATE: 05-15-13
DATE: 5-15-13	DATE: 5-15-13
DATE: 5-15-13	DATE: 5-15-13
DATE: 5-15-13	DATE: 5-15-13
DATE: 5-15-13	DATE: 5-15-13
DATE: 5-15-13	DATE: 5-15-13
DATE: 5-15-13	DATE: 5-15-13
DATE: 5-15-13	DATE: 5-15-13
DATE: 5-15-13	DATE: 5-15-13

City Engineer: [Signature]

DEP Chairman, Planning Department: [Signature]

Environmental Health, if necessary

AFD PLANS CHECKING OFFICE
 924-3611
APPROVED/DISAPPROVED
HYDRANT(S) ONLY
 SIGNATURE & DATE

CITY OF ALBUQUERQUE
 "SOLID WASTE"
 MANAGEMENT DEPARTMENT
 APPROVED

needs an open stop

NOTE: CONCRETE PAVEMENT SHALL BE USED WITHIN ALL DRIVE AND PARKING SITE AREAS

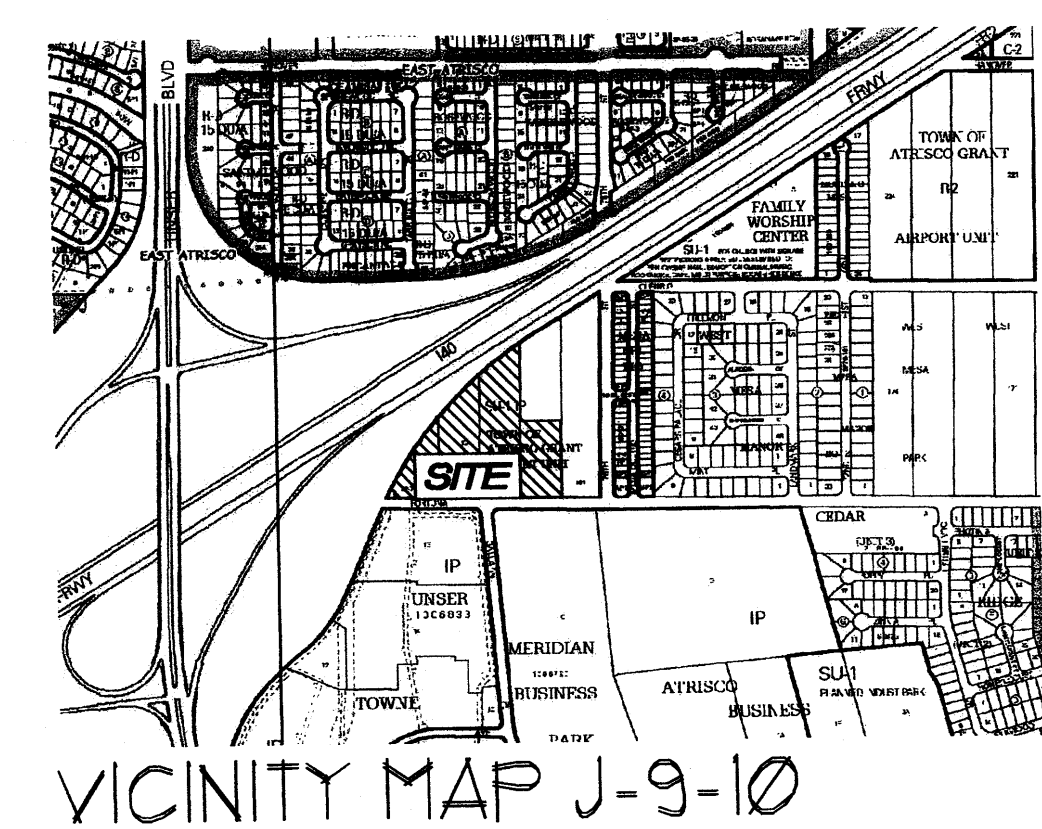
TOWN OF ATRISCO GRANT
 AIRPORT UNIT

Filed - December 5, 1944 in Volume D, Folio 113

NOT A PART
 PORTION OF TRACT 182
 TOWN OF ATRISCO GRANT
 AIRPORT UNIT
 Quitclaim Deed Filed 11/17/95 in Book 95-26, Page 1200

NOT A PART
 PORTION OF TRACT 182
 TOWN OF ATRISCO GRANT
 AIRPORT UNIT
 Quitclaim Deed Filed 05/15/97 in Book D303A, Page 692

NOT A PART
 PORTION OF TRACT 182
 TOWN OF ATRISCO GRANT
 AIRPORT UNIT
 Quitclaim Deed Filed 05/15/97 in Book D303A, Page 692



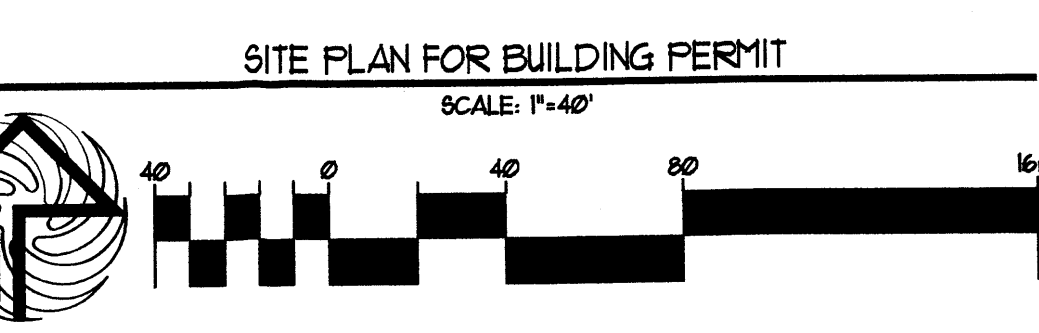
SITE DATA TABLE	INLAND KENWORTH
LEGAL DESCRIPTION	A TRACT OF LAND SITUATE WITHIN THE TOWN OF ATRISCO GRANT, PROJECTED SECTION 8, TOWNSHIP 10 NORTH, RANGE 2 EAST, NEW MEXICO PRINCIPAL MERIDIAN, CITY OF ALBUQUERQUE, BERNALILLO COUNTY, NEW MEXICO BEING A PORTION OF TRACTS 182 THRU 184, TOWN OF ATRISCO GRANT, AIRPORT UNIT, AS THE SAME IS SHOWN AND DESIGNATED ON SAID PLAT FILED FOR RECORD IN THE OFFICE OF THE COUNTY CLERK OF BERNALILLO COUNTY, NEW MEXICO ON DECEMBER 5, 1944 IN VOLUME D, FOLIO 113.
TOTAL ACRES	388.92 OF OR 889.93 AC
EXISTING ZONING	SH FOR 8' WITH TRUCK SALES AND SERVICE
BUILDING SIZE	40,914 SF TOTAL
PROPOSED USES	TRUCK SALES AND SERVICE
TOTAL PARKING PROVIDED	86 SPACES 14,000 SF SALES 200+ 10 CARS 24,914 SF TRUCK SERVICE 2000+ 14 CARS + 84 REG PARKS
TOTAL PARKING REQ.	86 SPACES
HC PROVIDED	4 HC (INCLUDING 4 VAN ACCESSIBLE)
HC REQUIRED	4 HC SPACES
BIKE SPACES PROVIDED	8 BIKE SPACES
BIKE SPACES REQUIRED	4 BIKE SPACES
MOTORCYCLE SPACES PROVIDED	3 SPACES
MOTORCYCLE SPACES REQUIRED	4 SPACES

- KEYED NOTE:**
- 1) 8" INTEGRALLY COLORED, AND TEXTURED CONC. PEDESTRIAN CROSSWALK RE: DETAIL 6/A11
 - 2) LIGHT POLE LOCATION RE: DETAIL 3/A11
 - 3) CONC. SIDEWALK ADJACENT BLDG RE: DET 8/A11
NOTE: TYP. SIDEWALK WIDTH ADJACENT BLDG = 8'
RE: SITE PLAN FOR JOINT LAYOUT
 - 4) TYPICAL CONC. SITE SIDEWALK: DET 1/A11
NOTE: TYP. SITE SIDEWALK WIDTH = 6'
RE: SITE PLAN FOR JOINT LAYOUT
 - 5) INDICATES BIKE RACK LOCATION (5 BIKE CAPACITY)
RE: DETAIL 10/A12
TYPICAL BIKE RACK GRAPHIC SYMBOL = [Symbol]
 - 6) BENCH LOCATION RE: DETAIL 10/A12
TYPICAL BENCH/REFUSE GRAPHIC SYMBOL = [Symbol]
 - 7) HANDICAP RAMP RE: 15/A11
 - 8) HANDICAP RAMP RE: 16/A11
 - 9) HANDICAP RAMP RE: 5/A11
 - 10) HANDICAP RAMP RE: 11/A11
 - 11) INDICATES LANDSCAPE PLANTING AREA
GC TO PROVIDE/COORDINATE REQ. SLEEVING FOR EA WELL LOCATION
RE: LANDSCAPE PLAN FOR INFO
 - 12) NOT USED
 - 13) 6" HIGH CONC. ISLAND RE: DET. 3/A11
RE: SITE GRADING PLAN FOR INFO
 - 14) REUSE ENCLOSURE RE: DET 1/A13
 - 15) HC PARKING STALL RE: DET 2/A12
 - 16) HC PARKING SIGNAGE RE: DET 11/A12
 - 17) WHEELSTOP RE: DET 4/A12
 - 18) INDICATES PROPOSED MOTORCYCLE PARKING STALL LOCATION
RE: SITE PLAN FOR LOCATIONS; RE: DET. 12/A12 FOR SIGN DET.
 - 19) MOTORCYCLE SIGNAGE RE: DET 12/A12
 - 20) PAINTED STRIPING/SIGNING AS INDICATED ON SITE PLAN
ALL STANDARD PARKING STALL STRIPING SHALL BE WHITE
 - 21) PROPOSED Pylon SIGN RE: DETAIL 8/A13 FOR SIGN ELEV.
 - 22) HANDICAP RAMP PER COA STD. DUG #2426
AT 1/2" MAX SLOPE WITH TRUNCATED DOTES PER COA STANDARDS
 - 23) INDICATES DRIVE ENTRANCE PER CITY STD. DETAIL 2426
 - 24) INDICATES SITE PERIMETER SECURITY FENCE
RE: DETAILS 9/A11/13
 - 25) NOT USED
 - 26) INDICATES PASSIVE WATER HARVESTING CURB NOTCH LOCATION
 - 27) INDICATES OVERHEAD BUILDING SHADING DEVICE
 - 28) CONCRETE SCREEN WALL 4'-6" IN HEIGHT AND COLORED GRAY TO MATCH THE ADJACENT BUILDING COLOR - SCREENS HVAC EQUIP.

NOTE: EXISTING ON-SITE LOT LINES SHALL BE VACATED UNDER FUTURE PLATTING ACTION WITH COA
 NOTE: ALL ROOF MOUNTED EQUIPMENT SHALL BE SCREENED FROM VIEW AS REQUIRED UNDER COA CODE SECTION 14-16-3-18

LINE/TYPE LEGEND

EXISTING PROPERTY LINE
 EXISTING CURB LINE
 PROPOSED CURB LINE



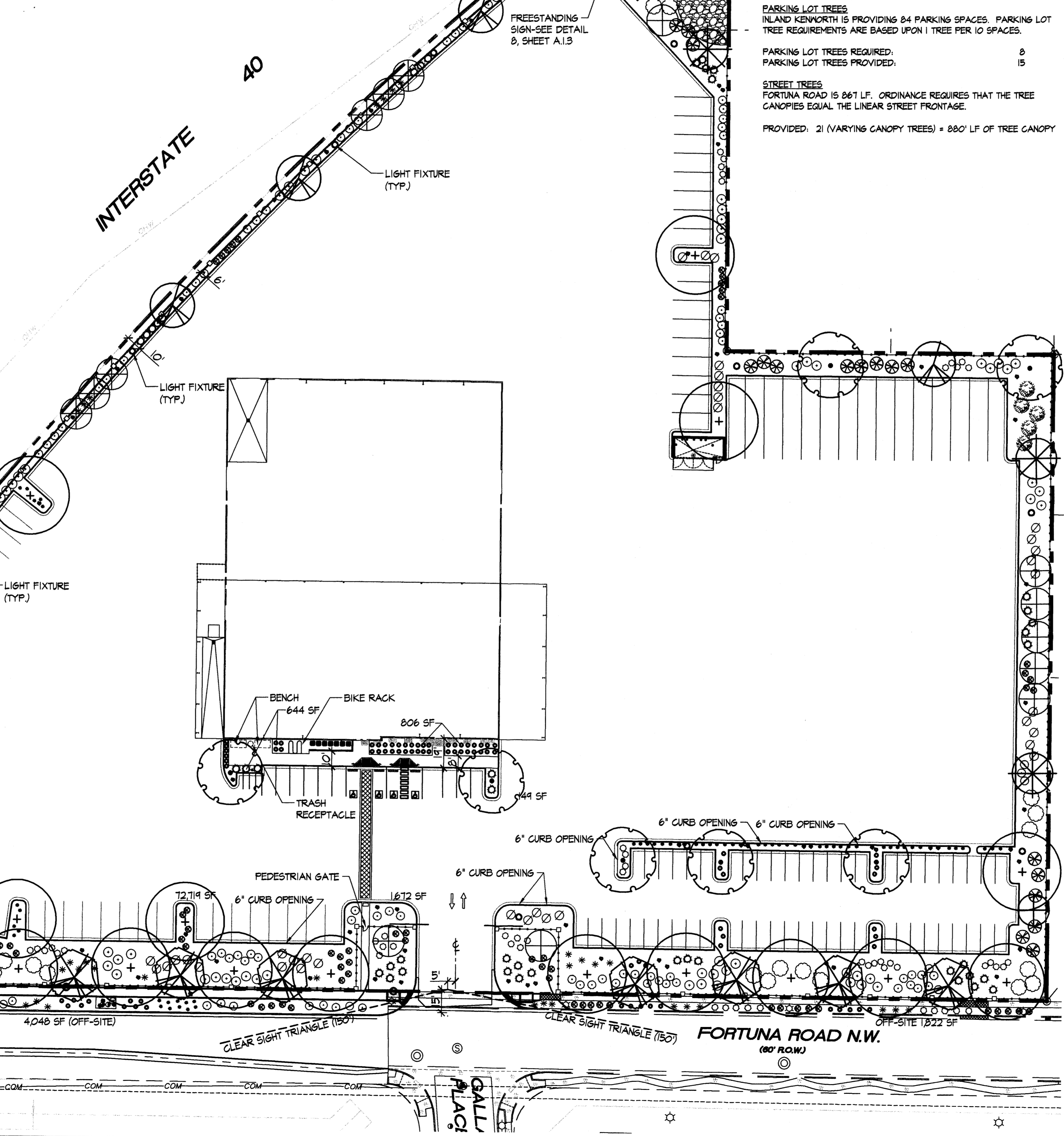
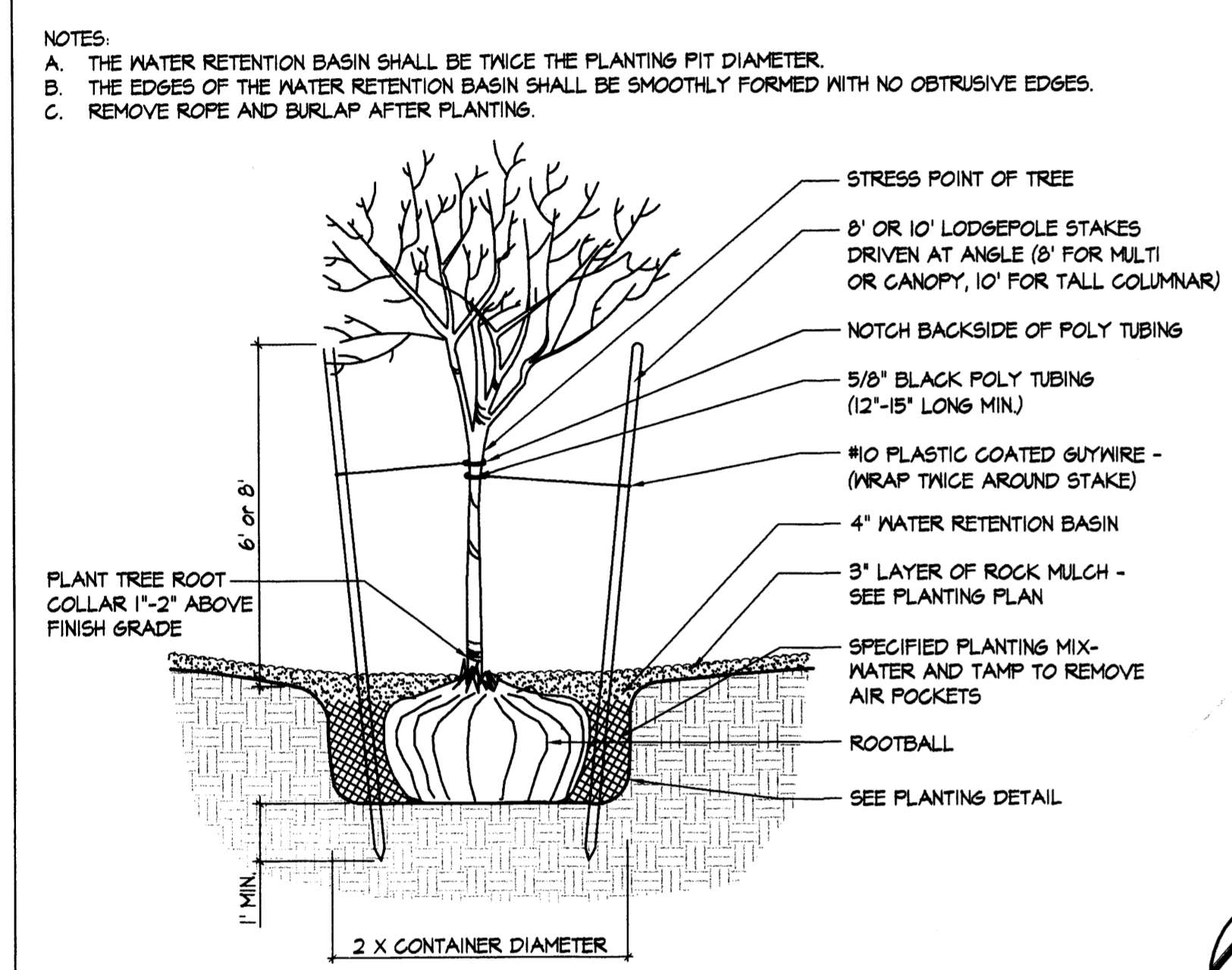
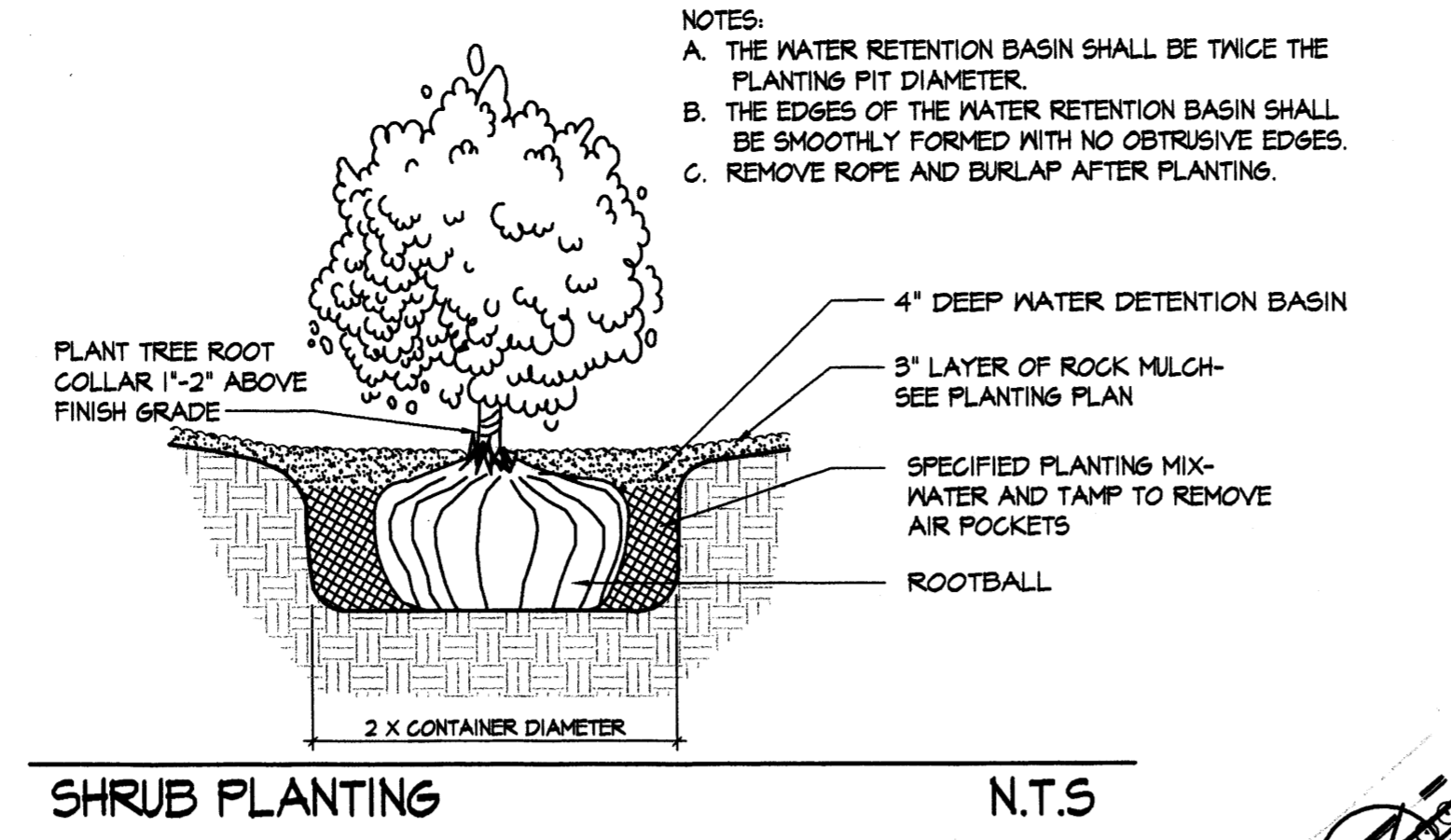
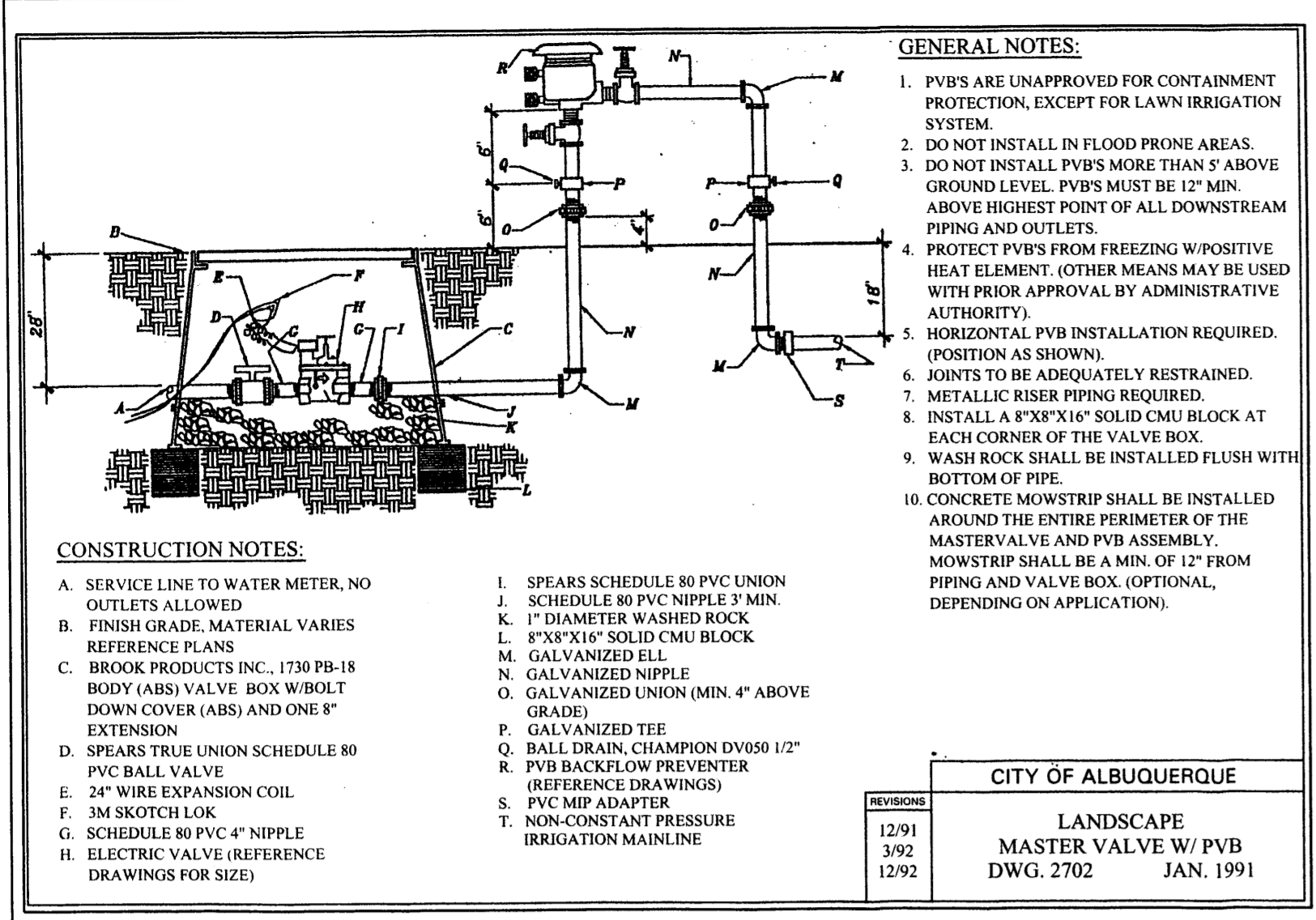
REVISIONS

DESIGN PLANS FOR:
 INLAND KENWORTH
 FORTUNA ROAD N.W.
 ALBUQUERQUE, NM

SITE PLAN FOR BUILDING PERMIT

1979001

Date: 4/29/2013
 Drawn By: S
 Job: KENWORTH
 Job No.: L-900 ABC-
 Sheet: BP-1
 of Sheets



REVISIONS

NO.	DATE	DESCRIPTION

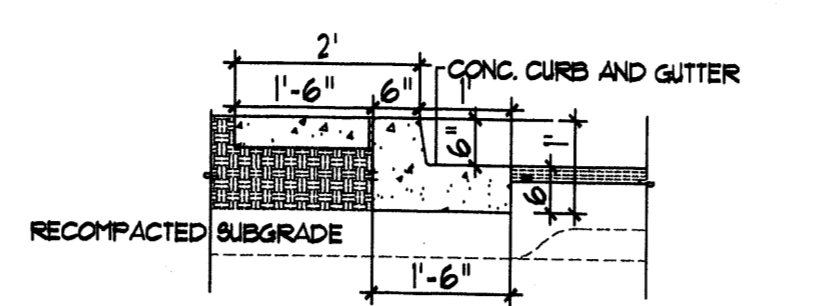
DESIGN PLANS FOR:
INLAND KENWORTH
FORTUNA ROAD N.W.
ALBUQUERQUE, NM

DRAWING TITLE:
LANDSCAPE PLAN

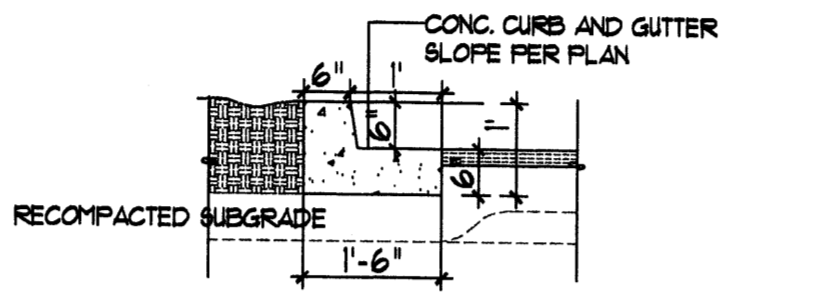
DATE: 04/30/13
DRAWN BY: GS
JOB: KENWORTH
JOB NO.: L-800 ABC-
SHEET: L-1 of 1

APRIL, 2013
Scale: 1" = 40'
20 0 40 80
north

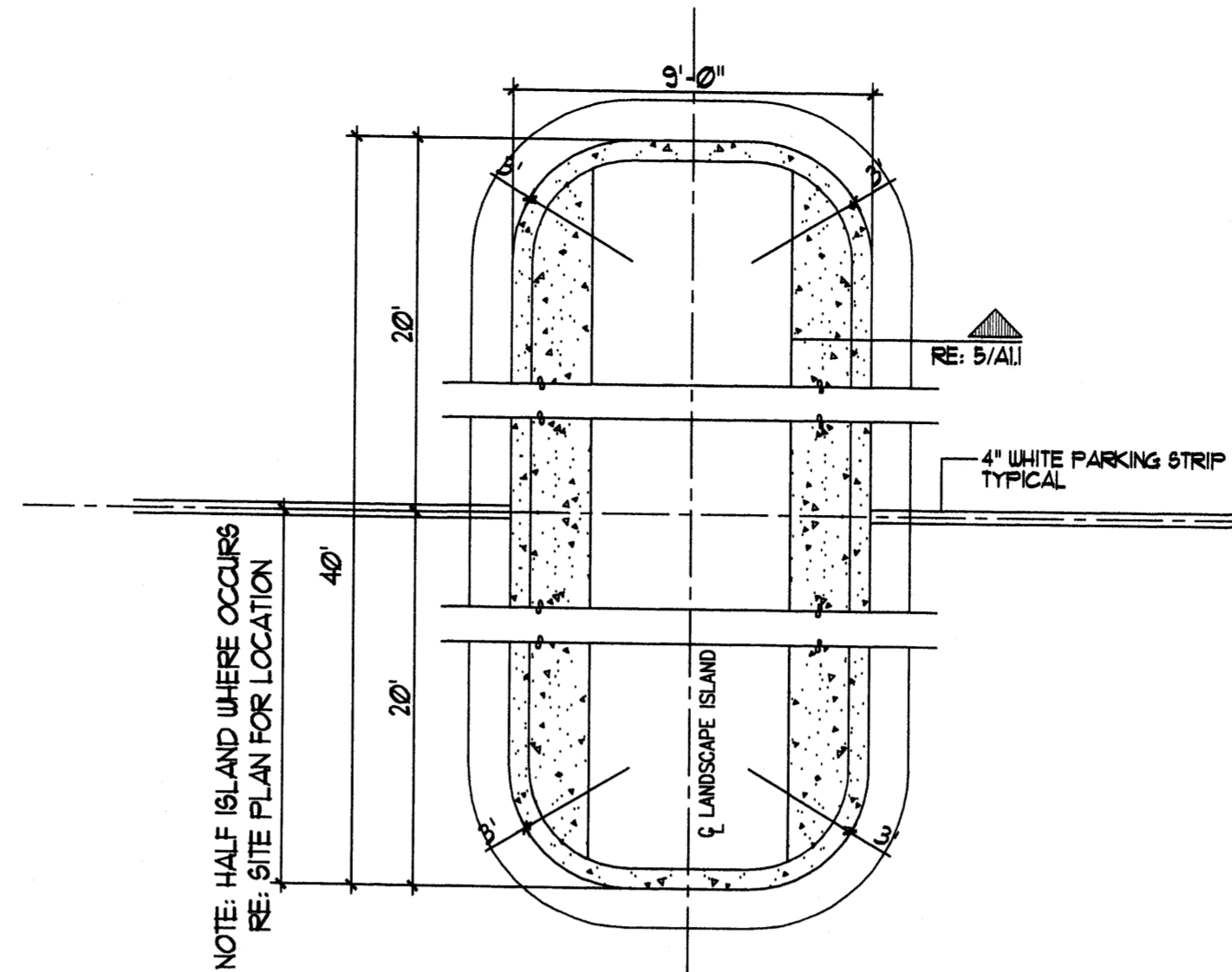
CONSENSUS PLANNING



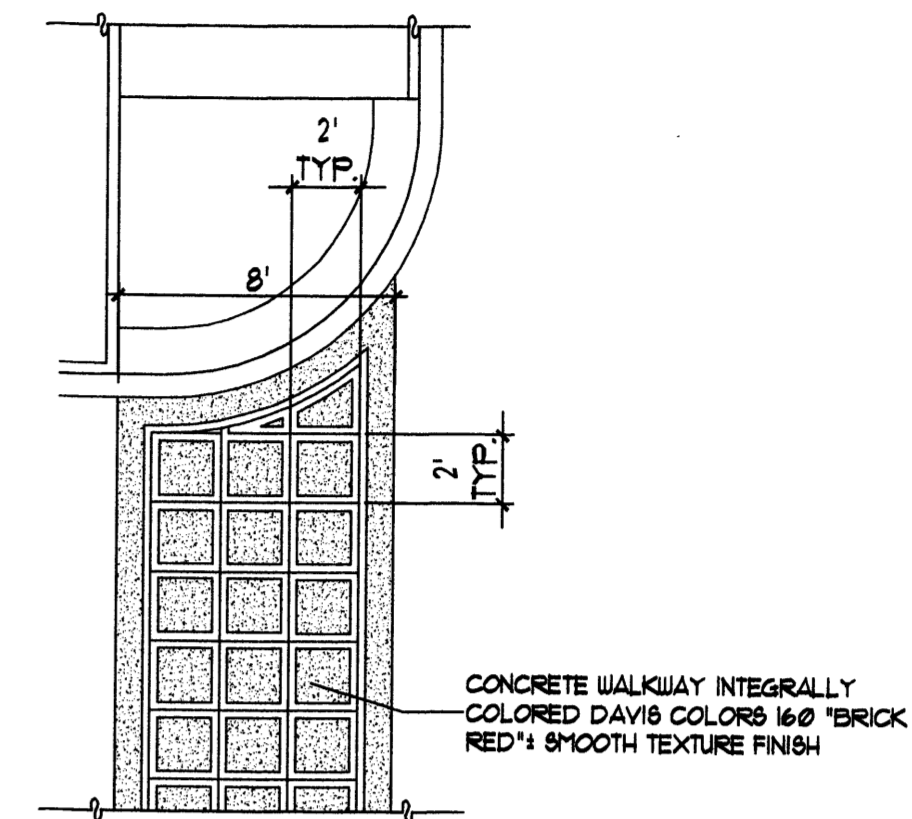
11 ISLAND CURB DETAIL
NTS



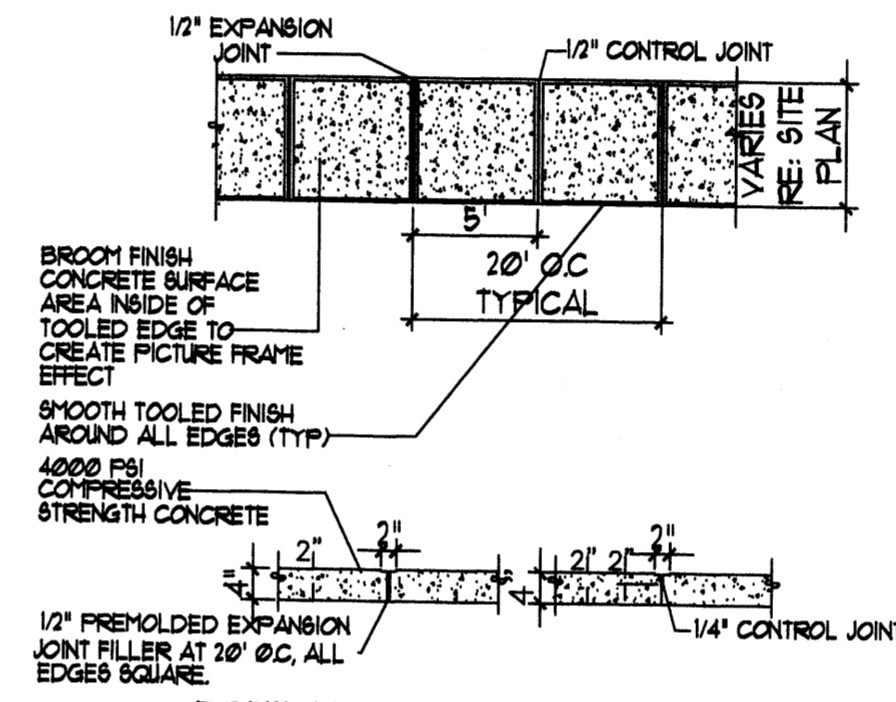
10 TYPICAL CURB DETAIL
NTS



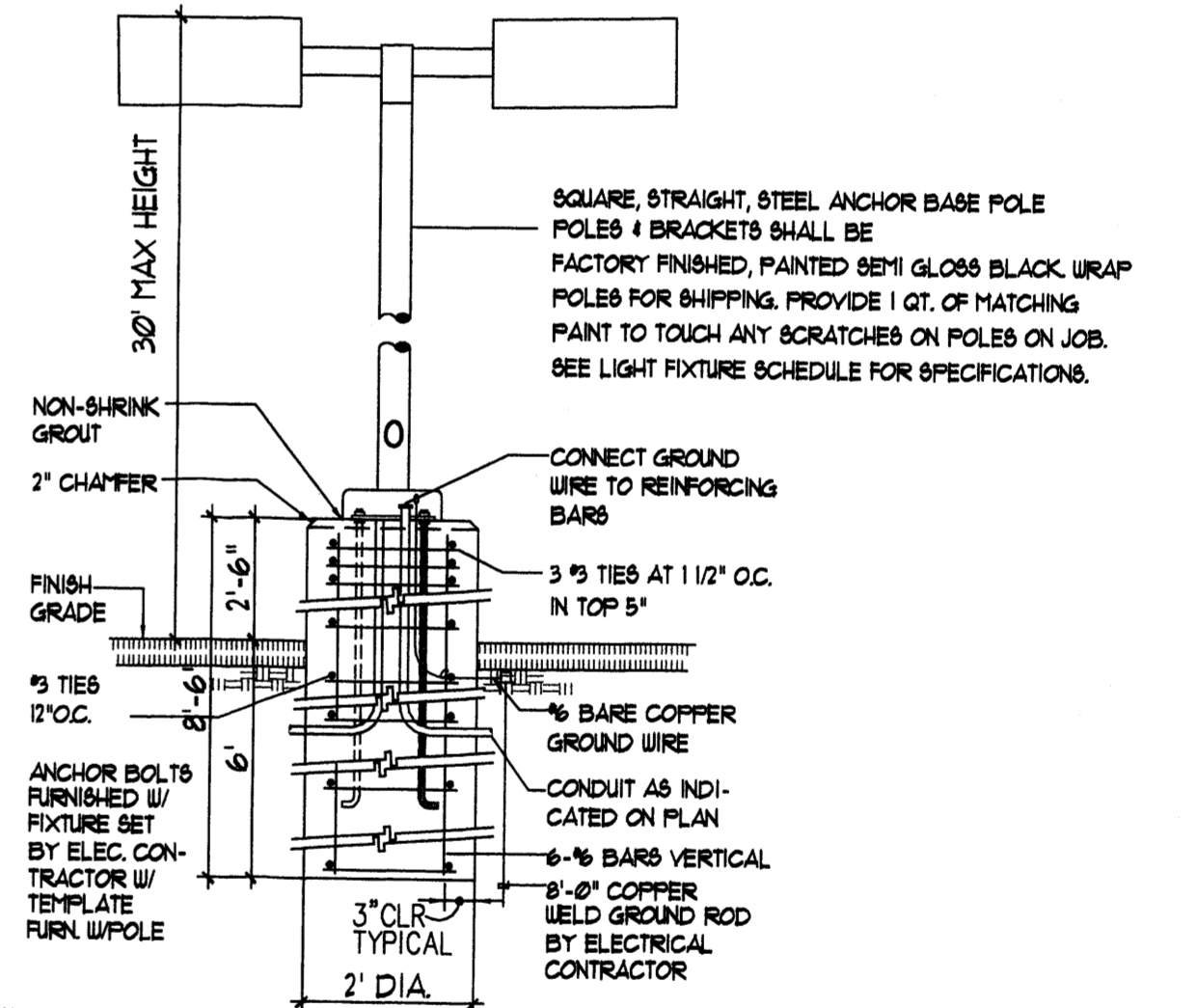
9 ISLAND DETAIL
NTS



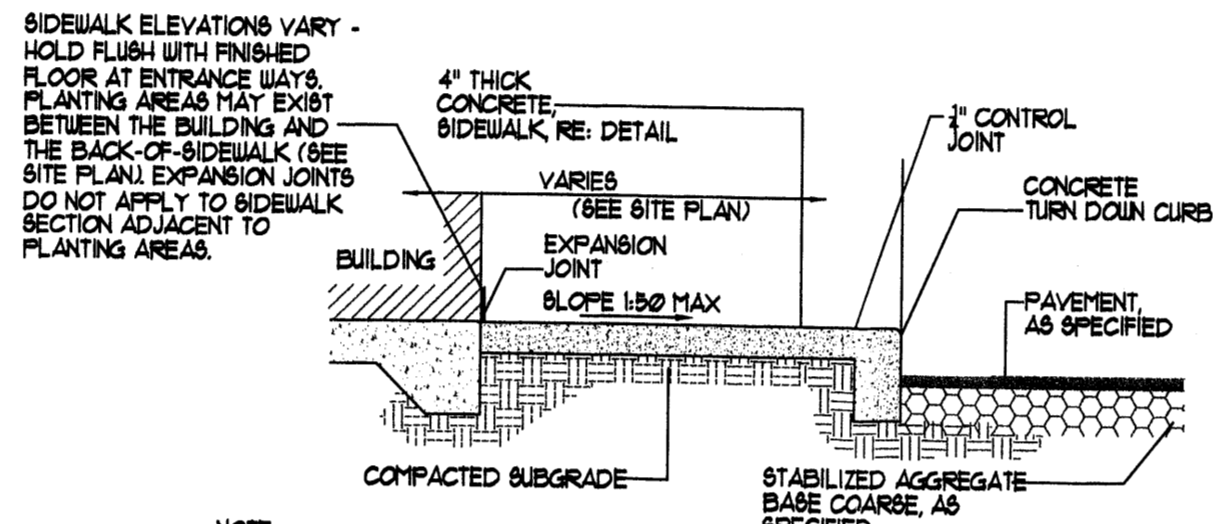
6 TYPICAL CONC. CROSSWALK
NTS



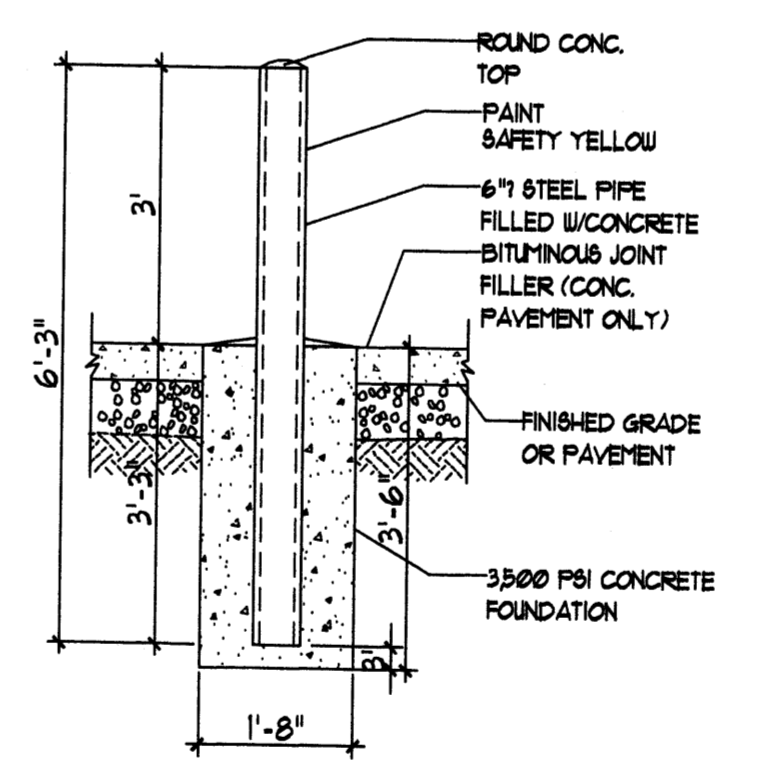
7 TYPICAL SIDEWALK
NTS



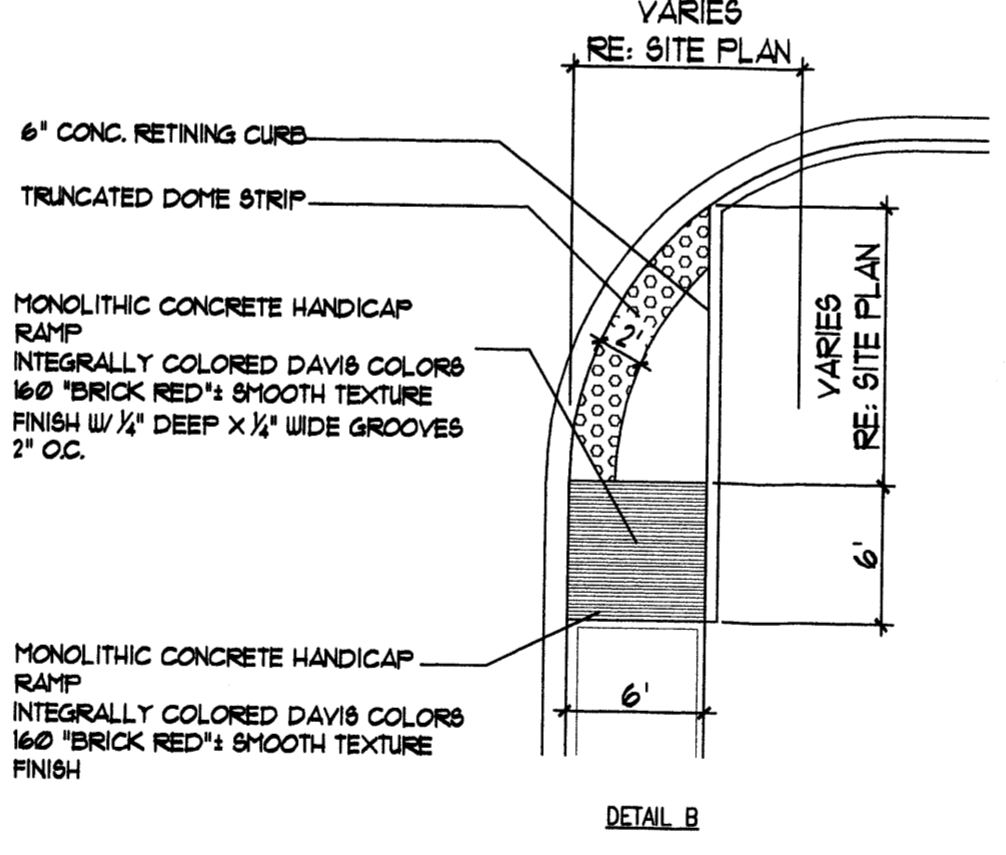
3 LIGHT POLE DETAIL
NTS



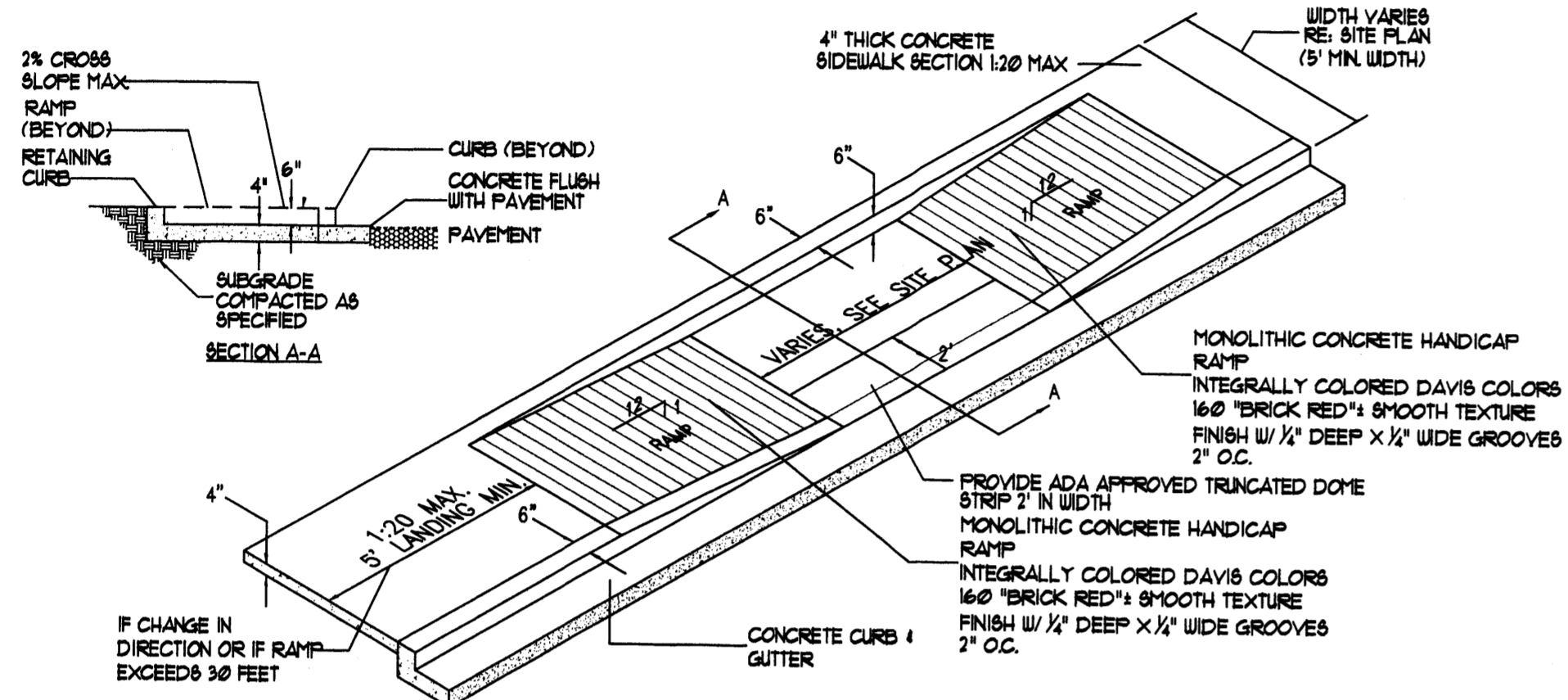
8 SIDEWALK WITH TURNDOWN CURB SEC.
NTS



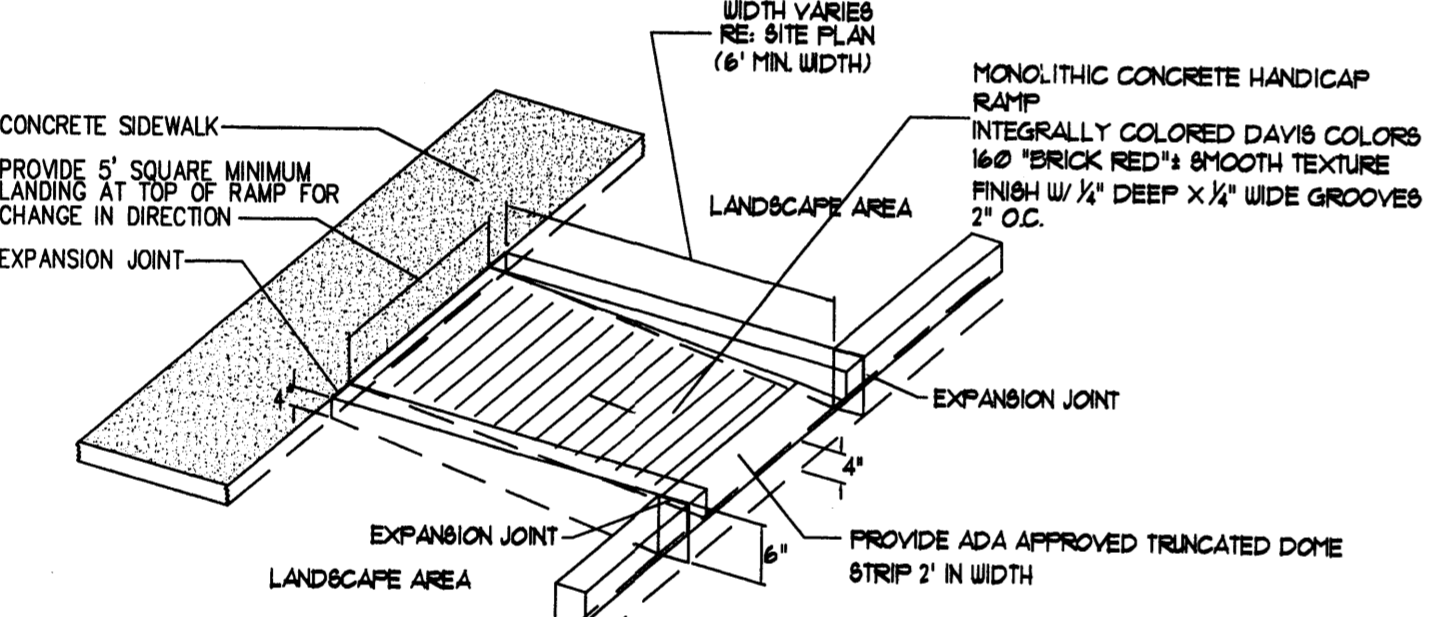
4 BOLLARD DETAIL
NTS



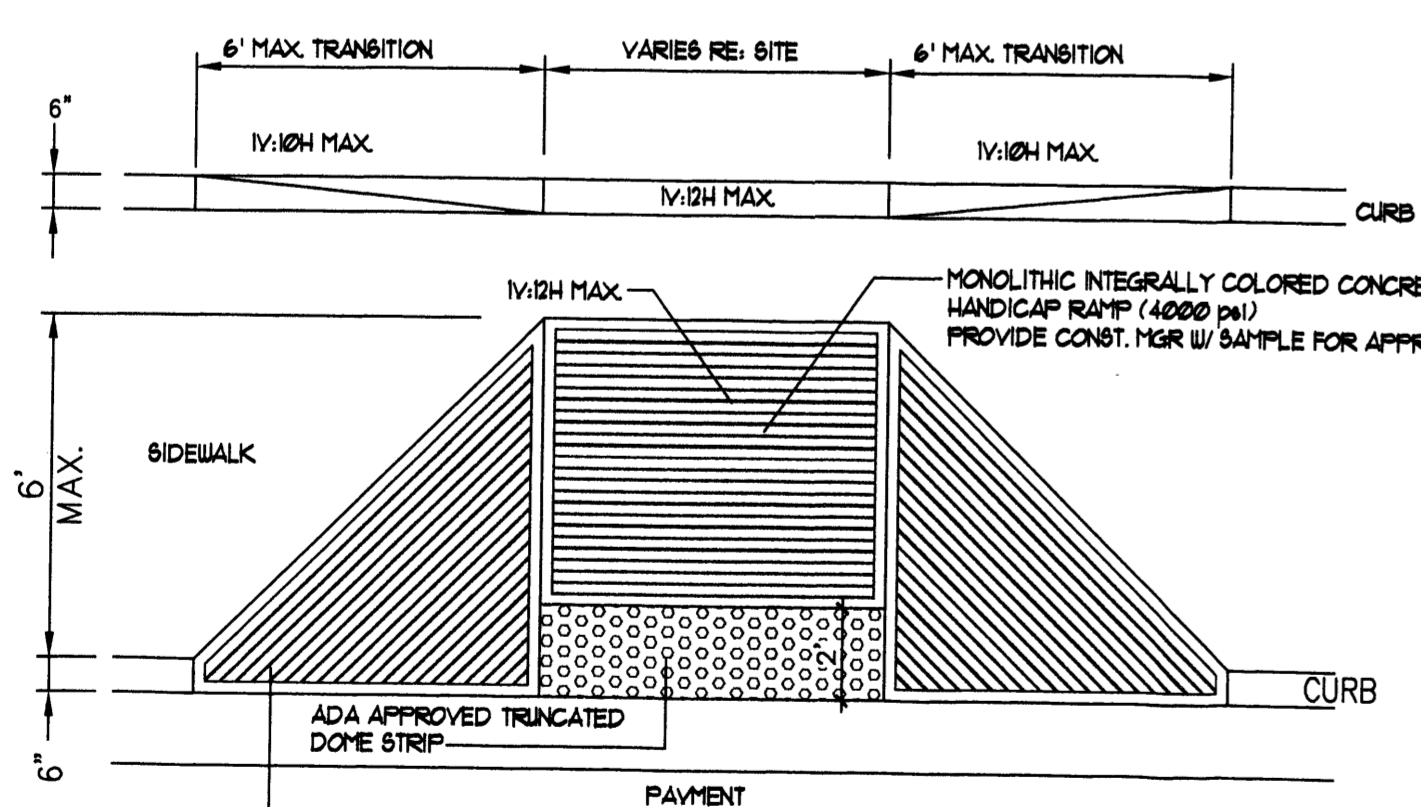
5 END ISLAND WITH WALK RAMP
NTS



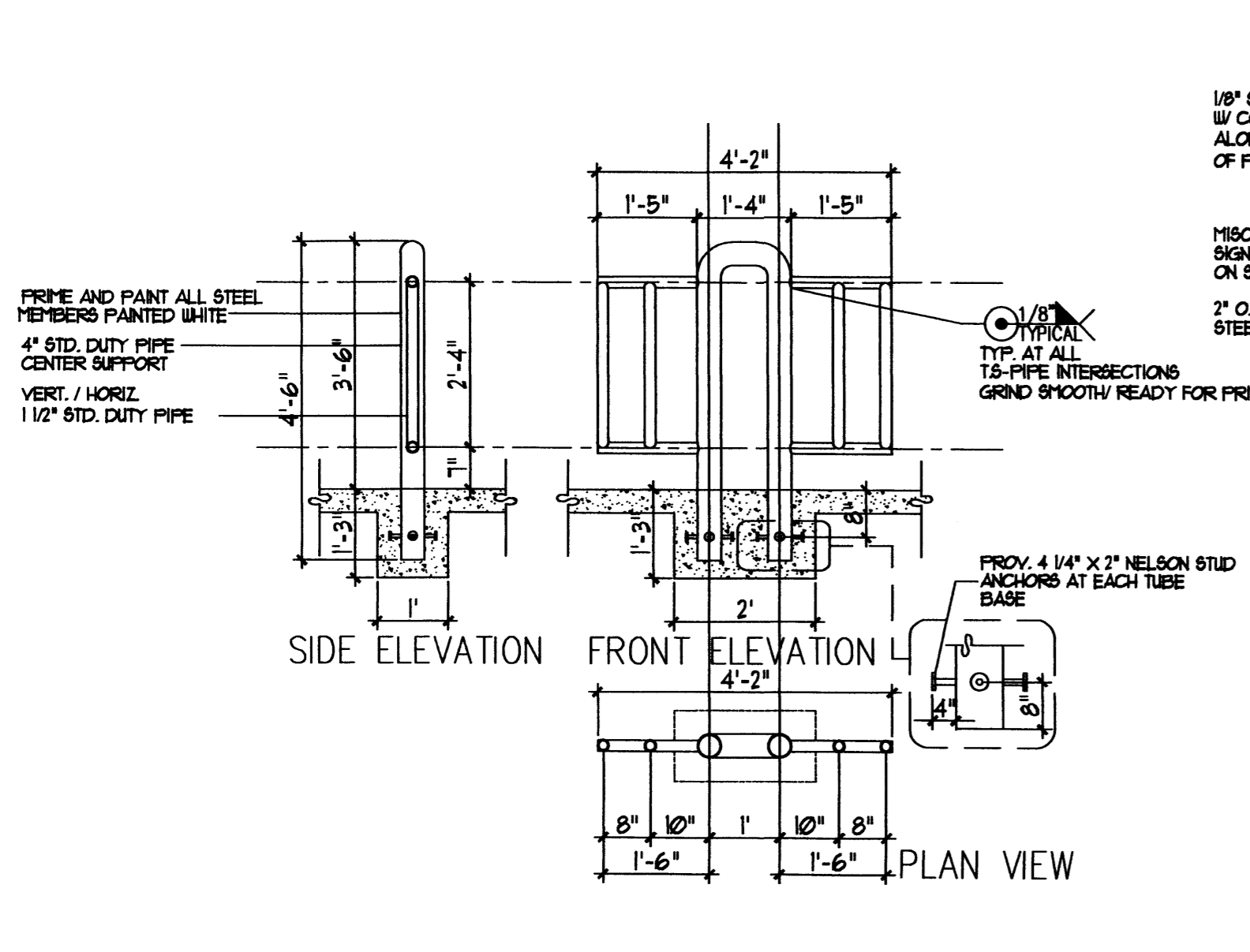
17 TAPERED RAMP DETAIL
NTS



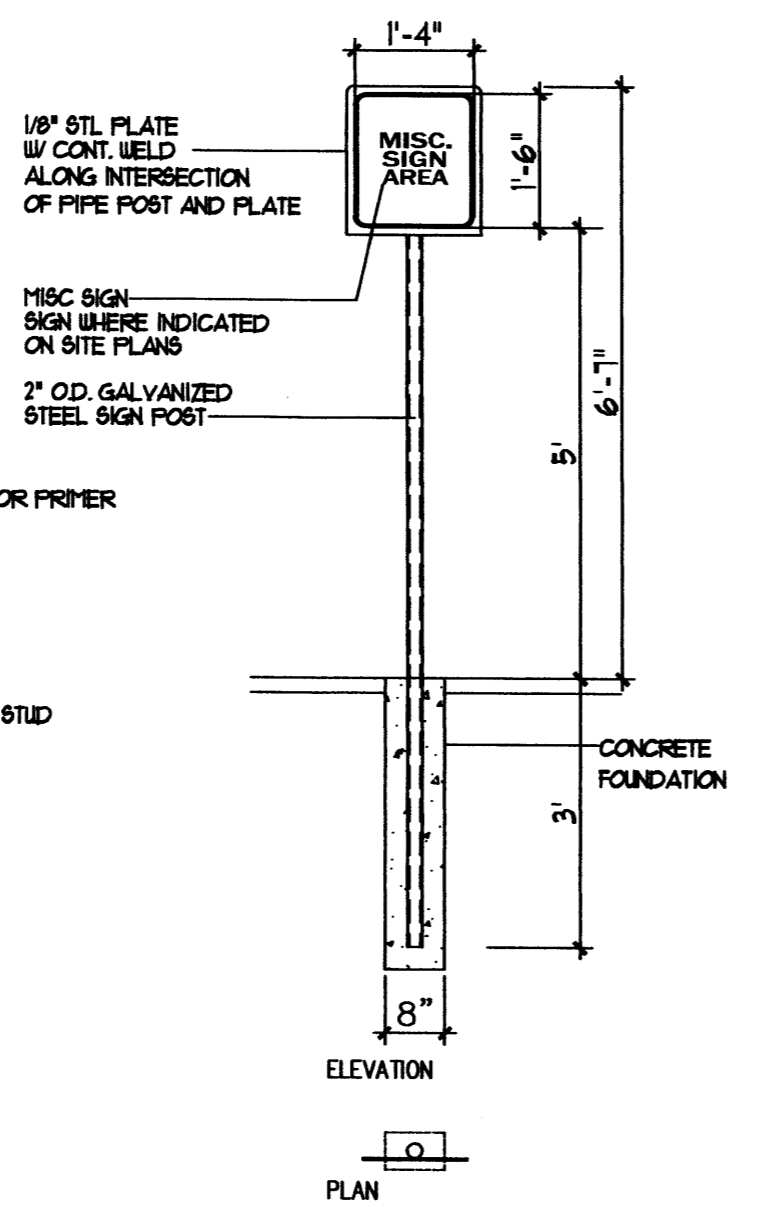
16 CURBED RAMP DETAIL
NTS



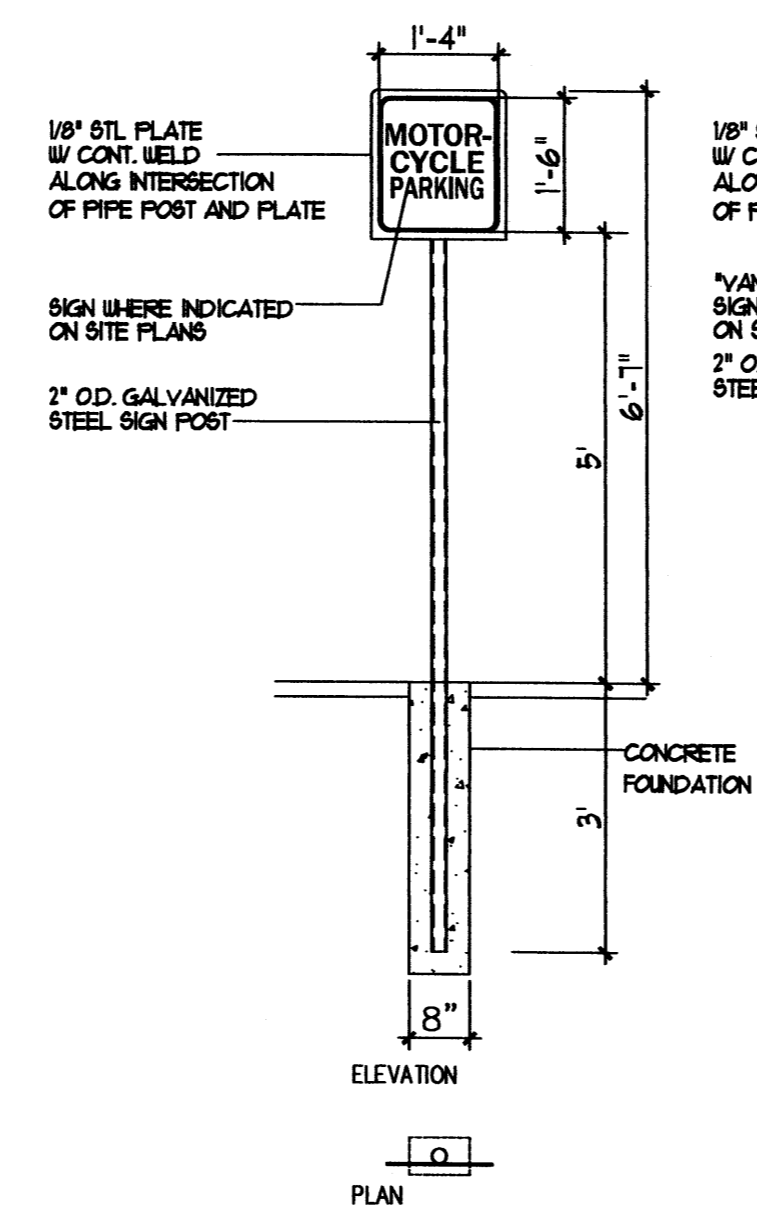
15 FLARED H.C RAMP
NTS



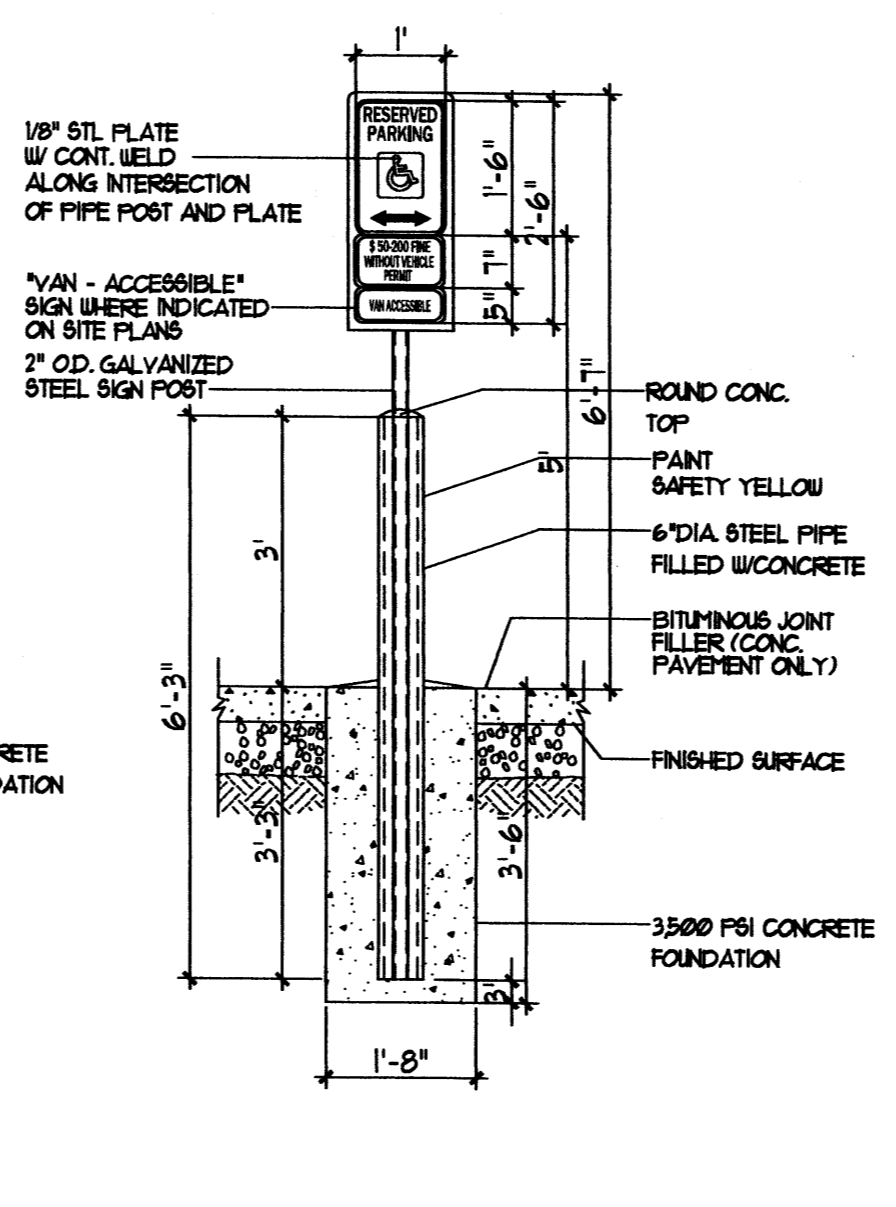
13 BIKE RACK
NTS



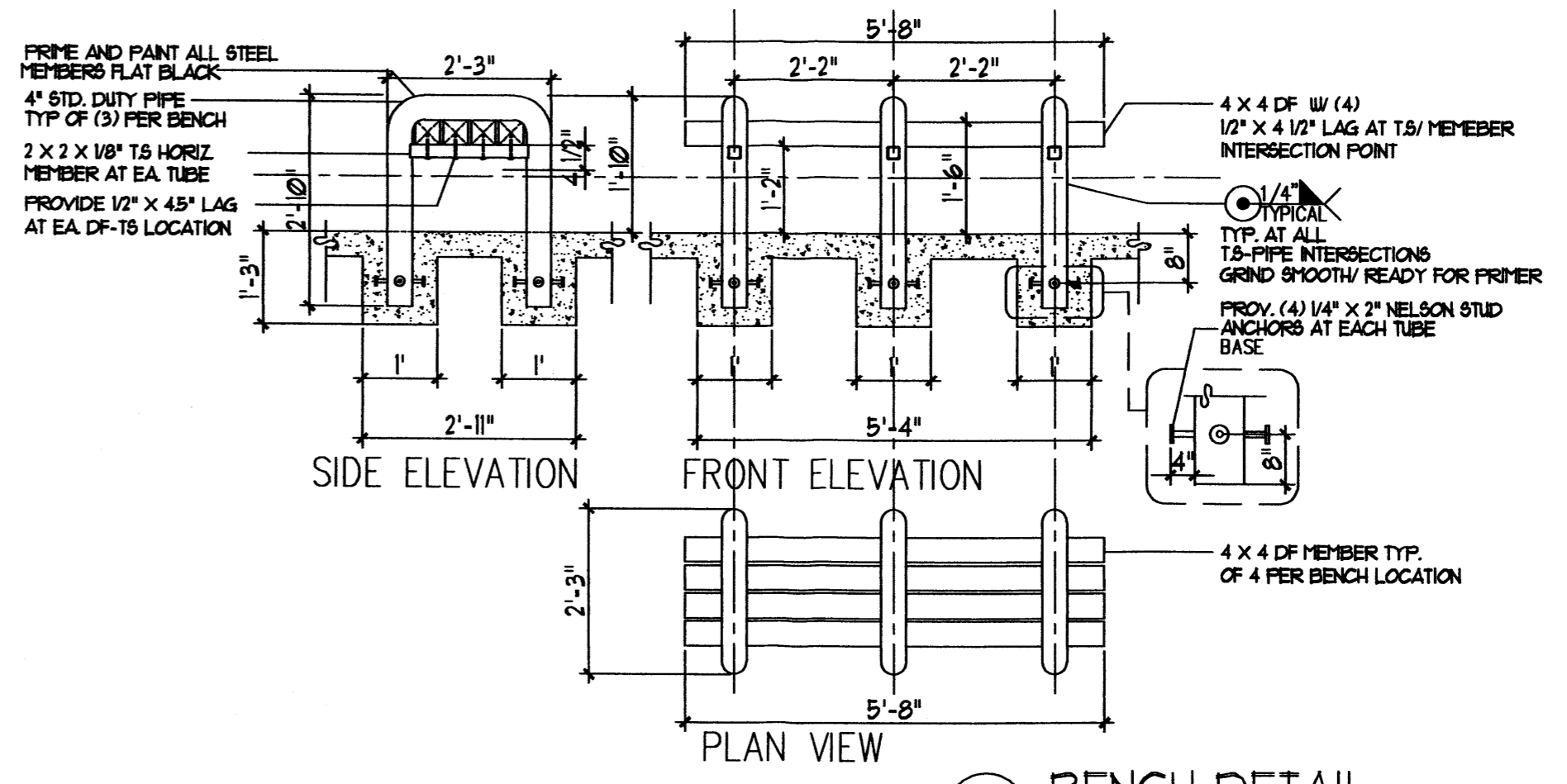
12 MISC. SIGNAGE
NTS



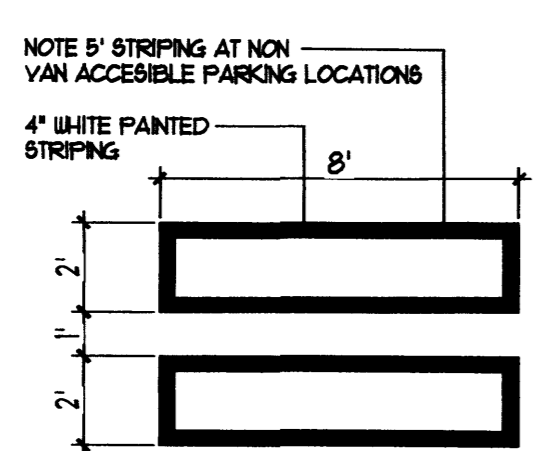
12A MOTORCYCLE SIGNAGE
NTS



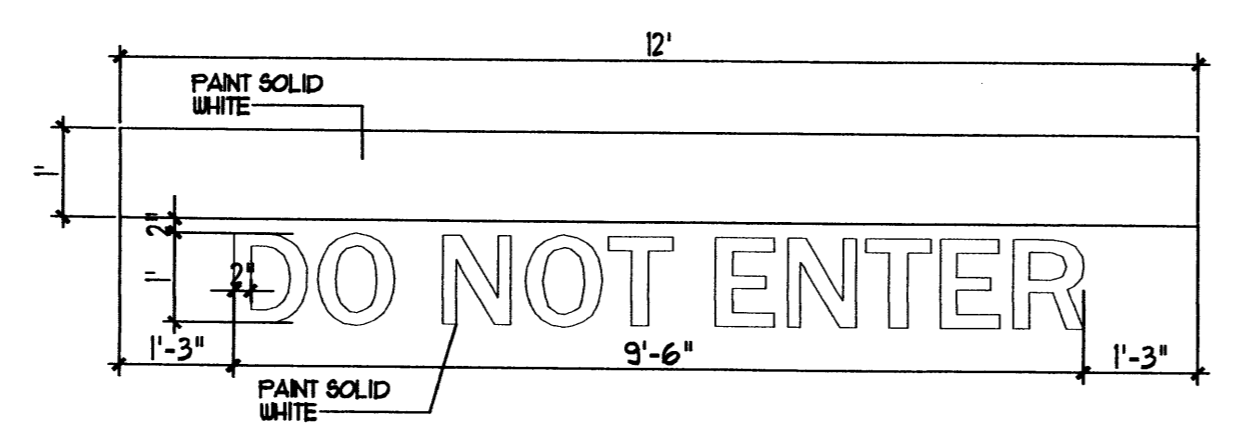
11 H.C. SIGNAGE
NTS



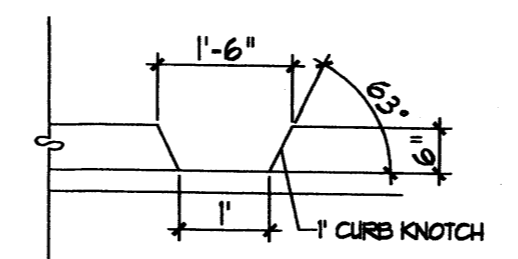
10 BENCH DETAIL
NTS



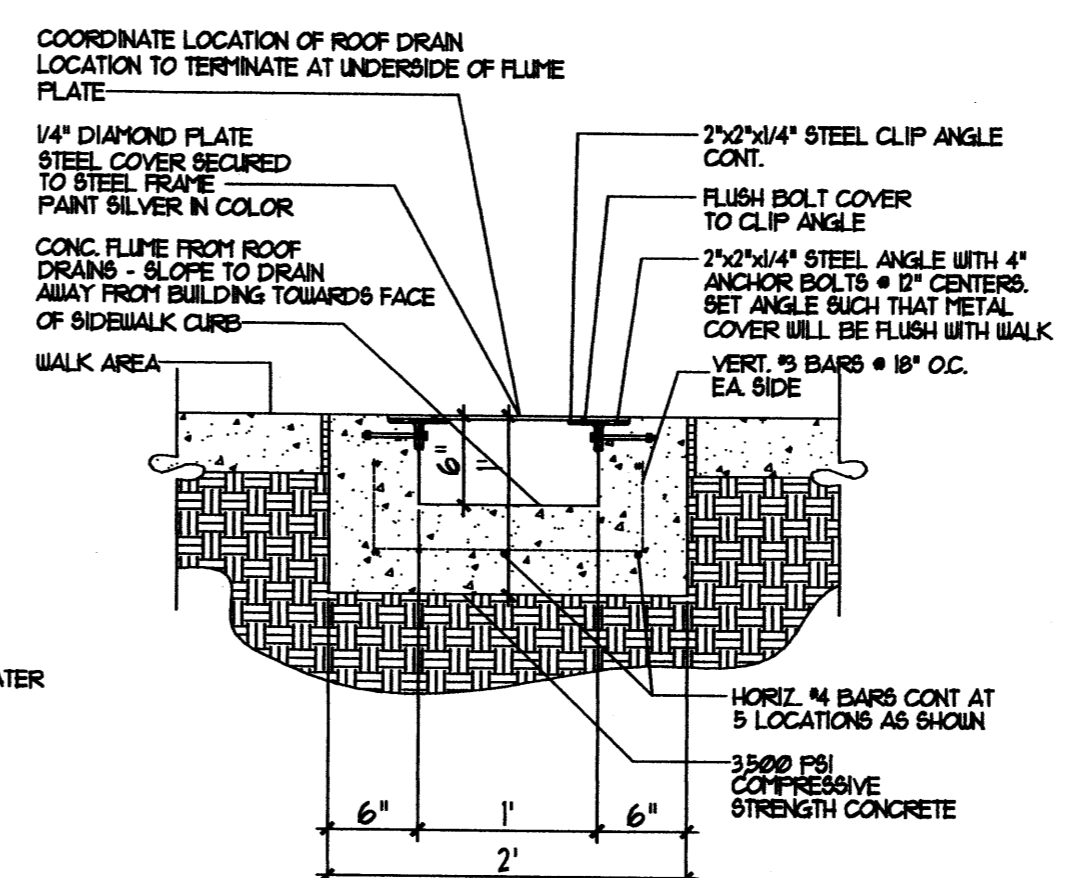
9 H.C. PARKING-WALK PAINT DETAIL
NTS



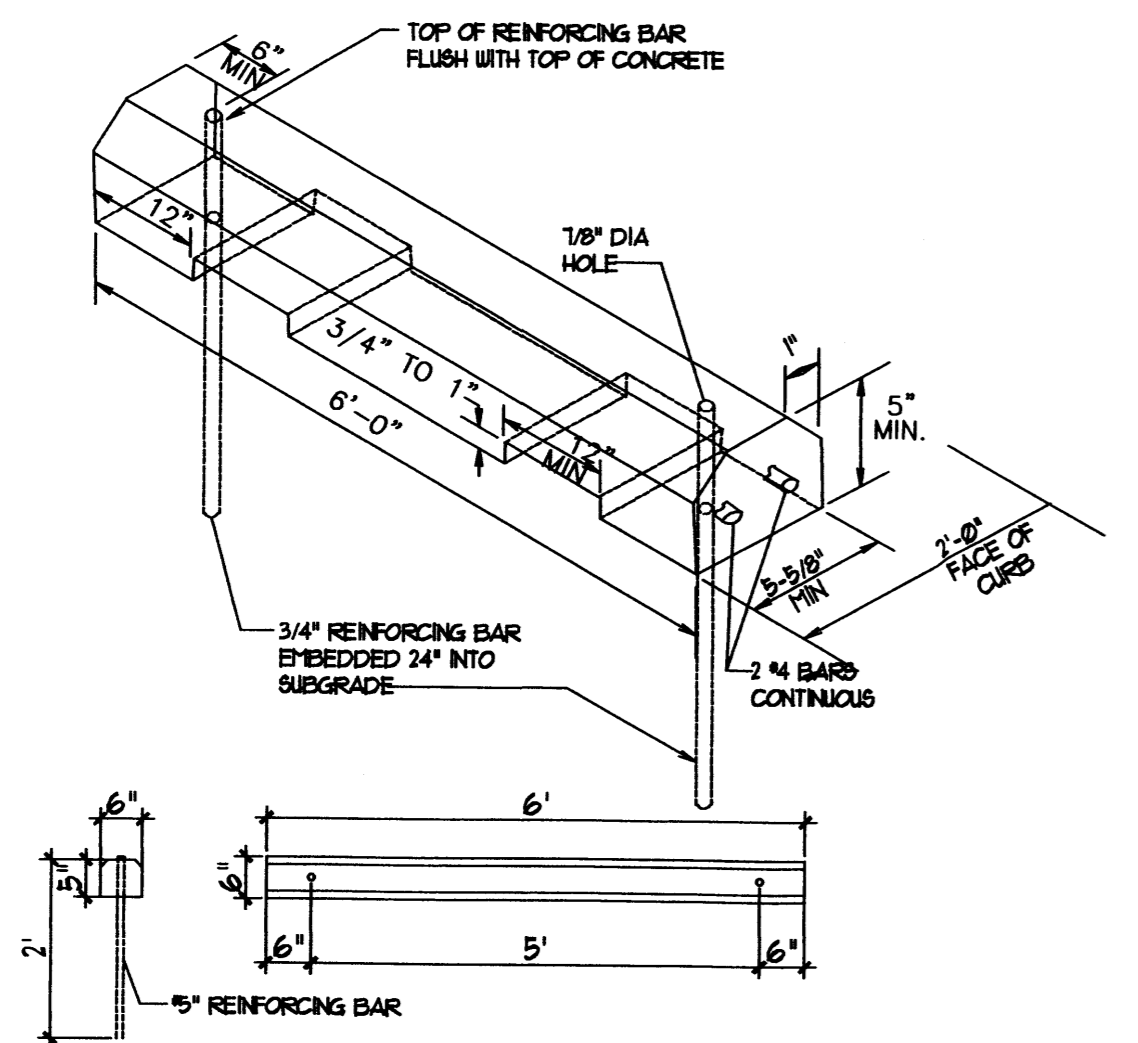
8 SITE DIRECTIONAL PAINT DETAIL
NTS



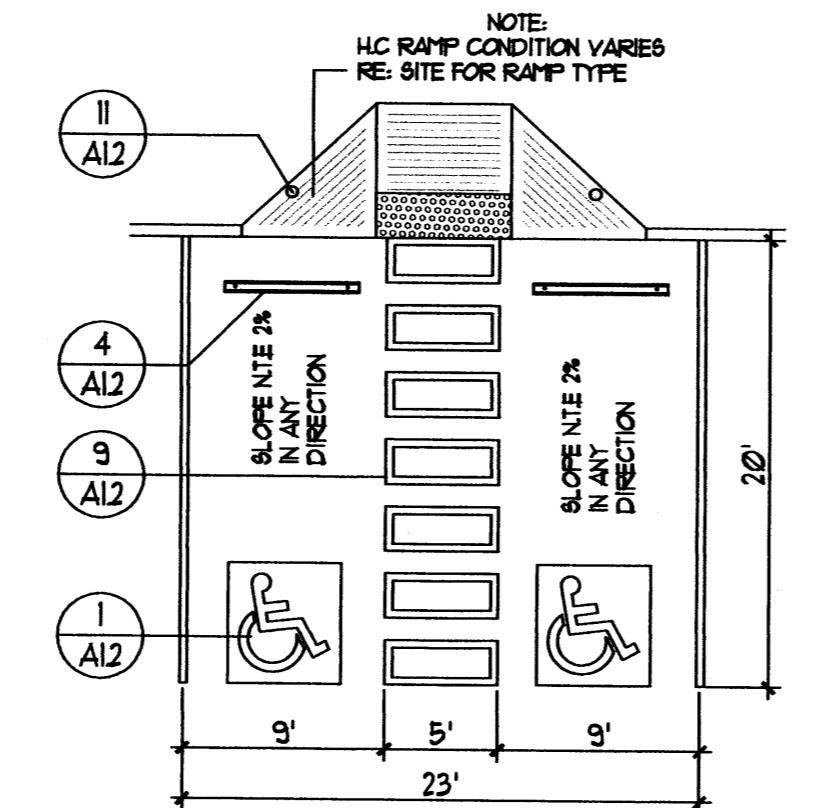
7 CURB NOTCH
NTS



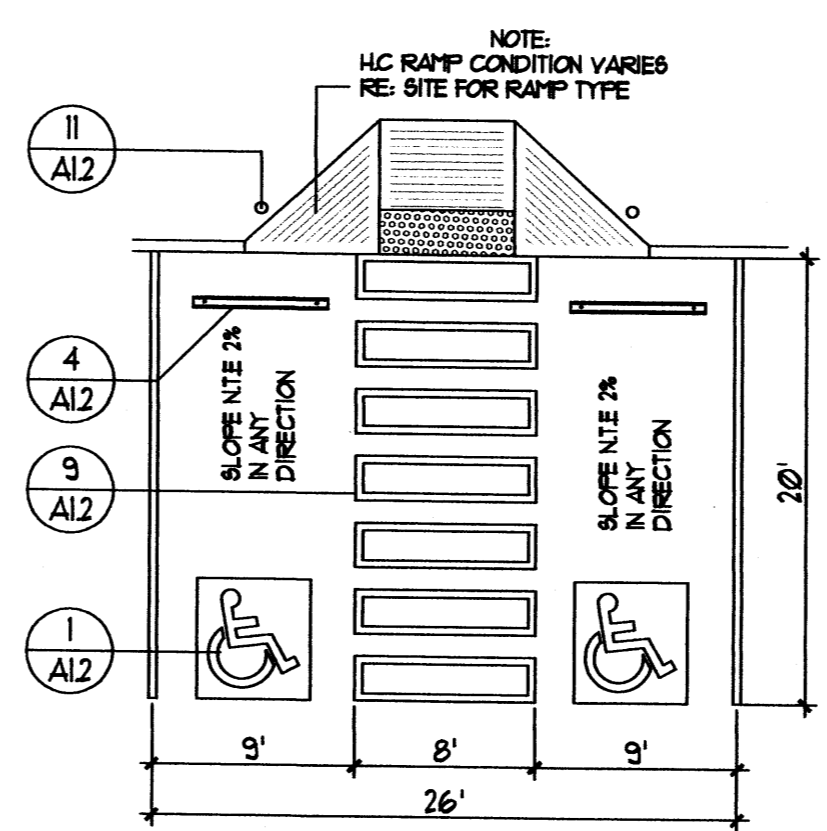
6 CONCRETE FLUME DETAIL
NTS



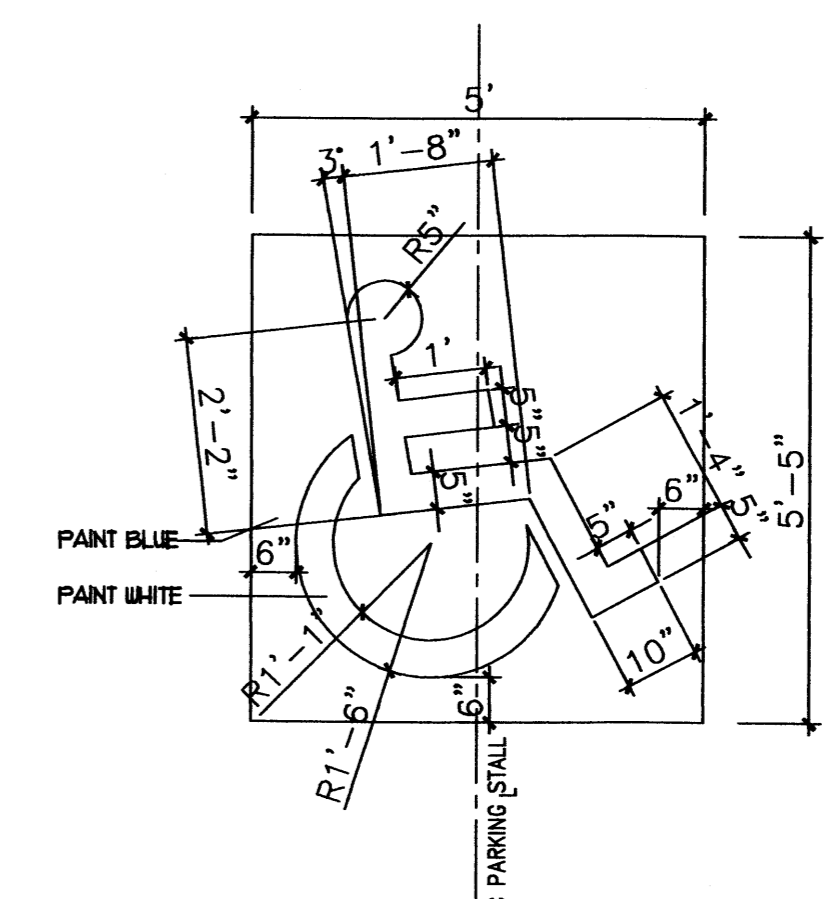
4 WHEEL STOP
NTS



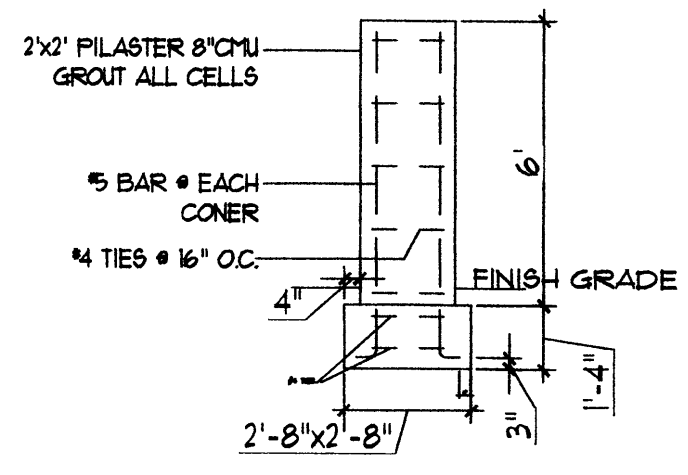
3 H.C. PARKING PLAN DETAIL
NTS



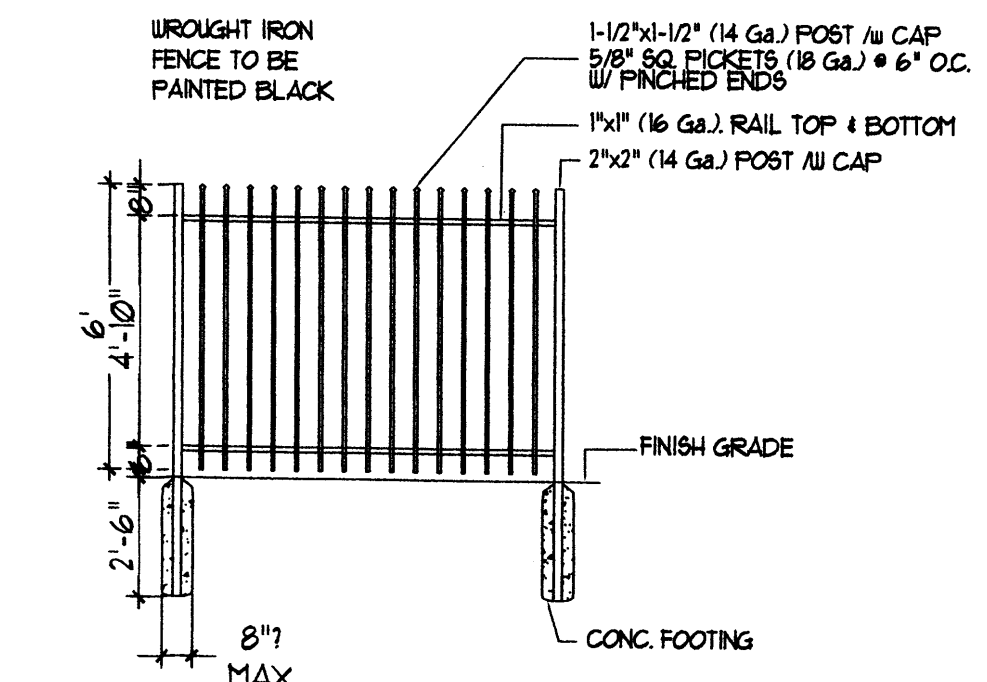
2 H.C. PARKING PLAN DETAIL (VAN ACCESSIBLE)
NTS



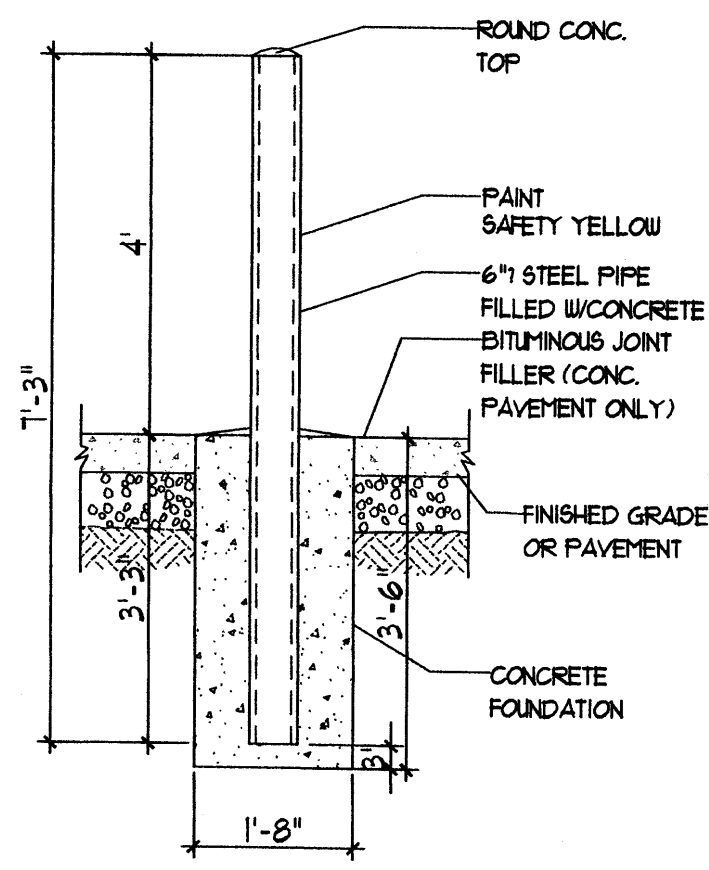
1 H.C. SIGNAGE
NTS



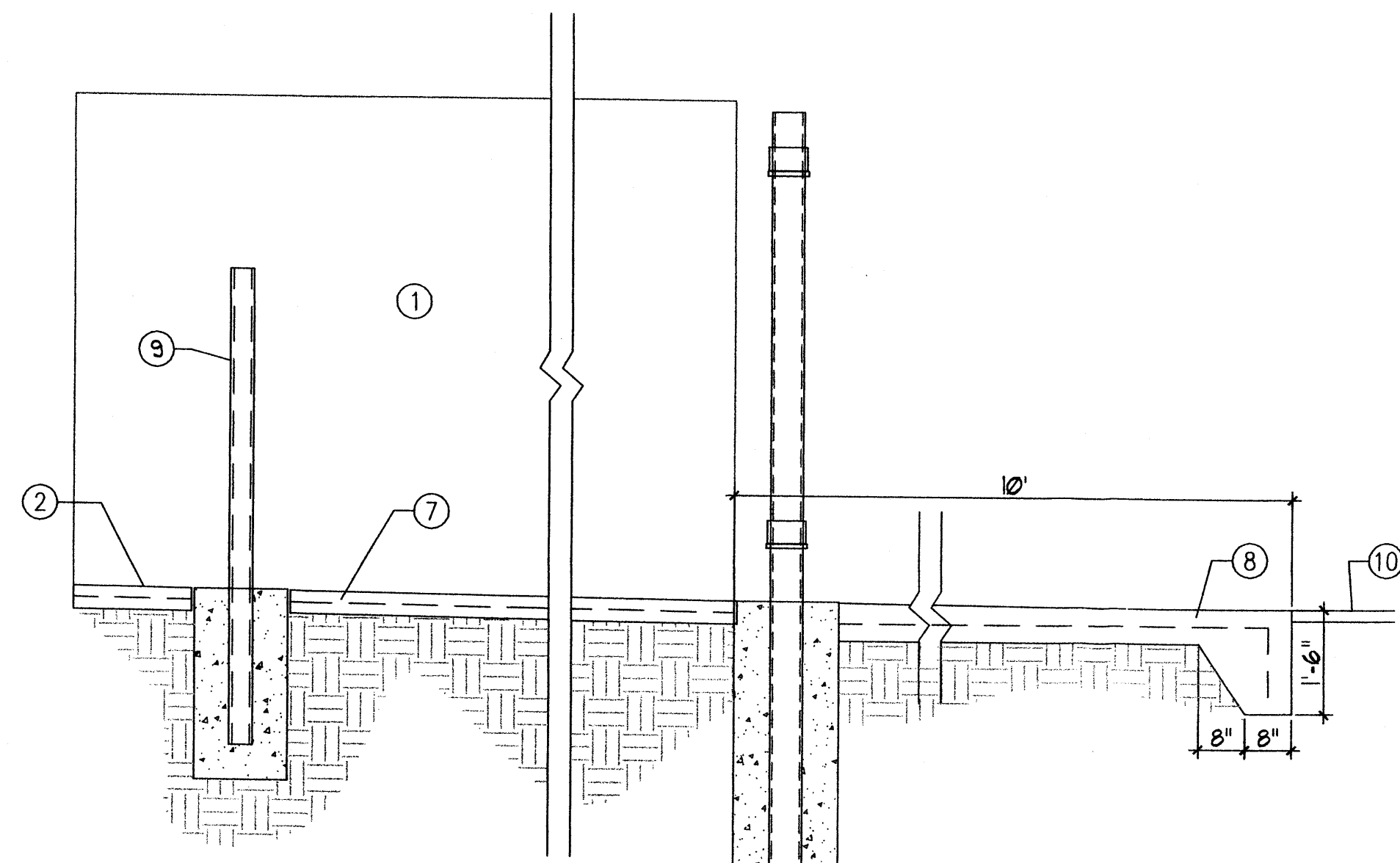
10 PILASTER DETAIL
NT5



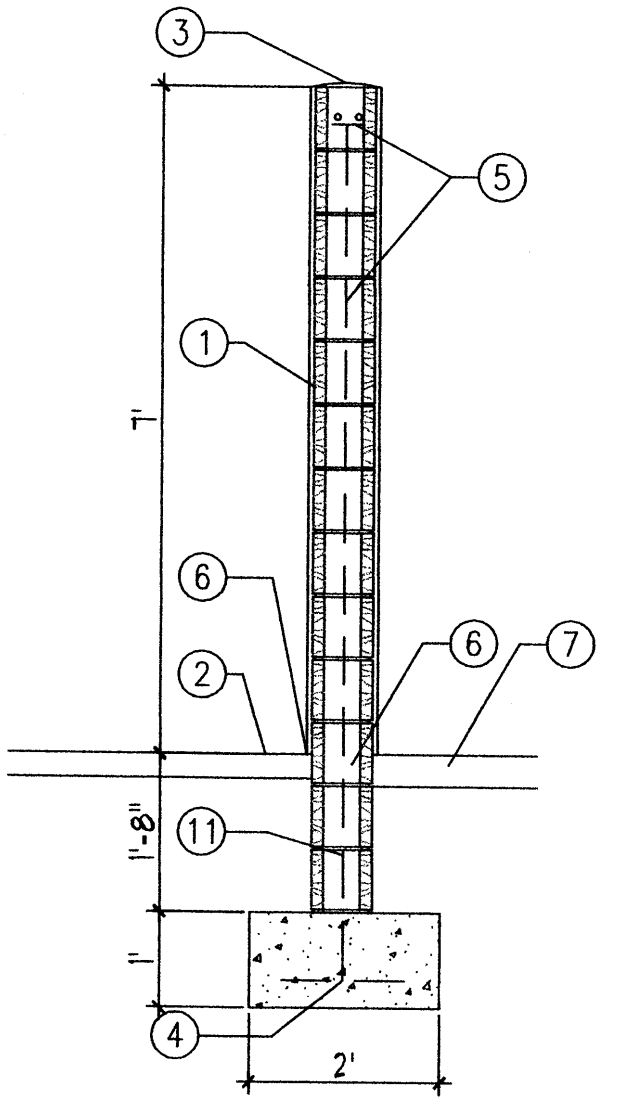
9 WROUGHT IRON FENCE DETAIL
NT5



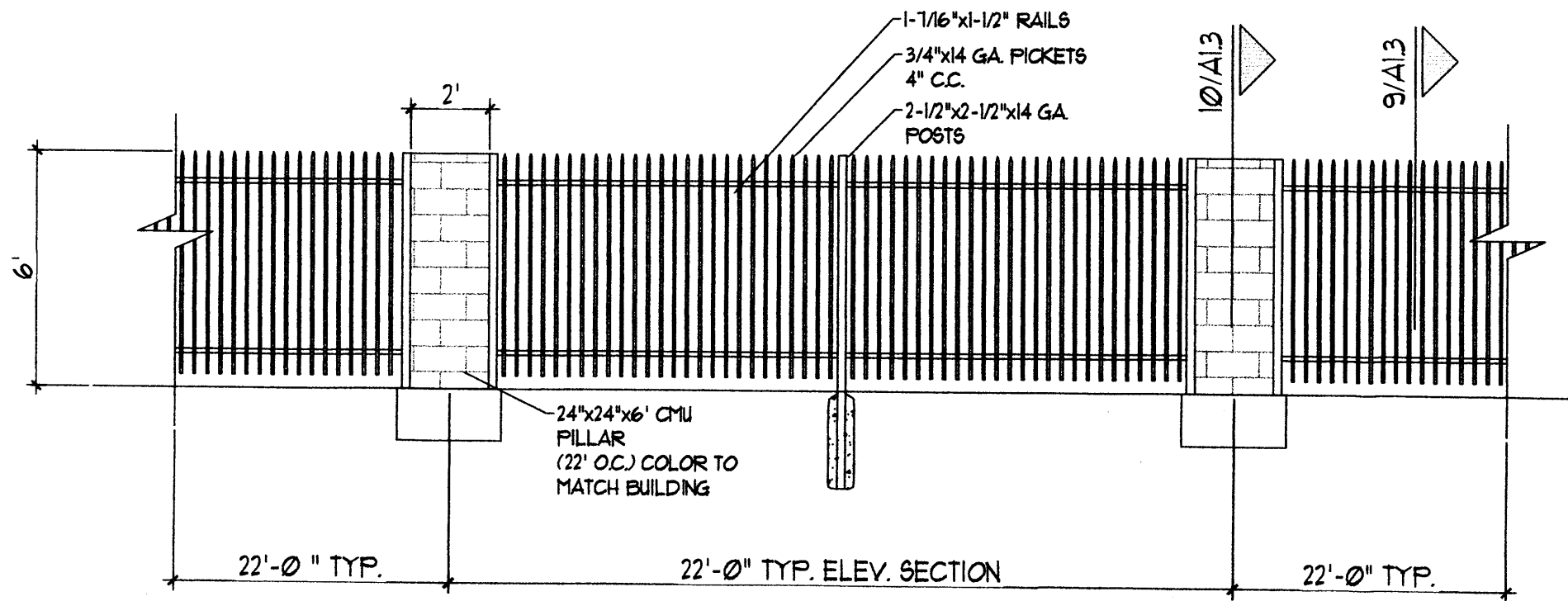
1 BOLLARD DETAIL
NT5



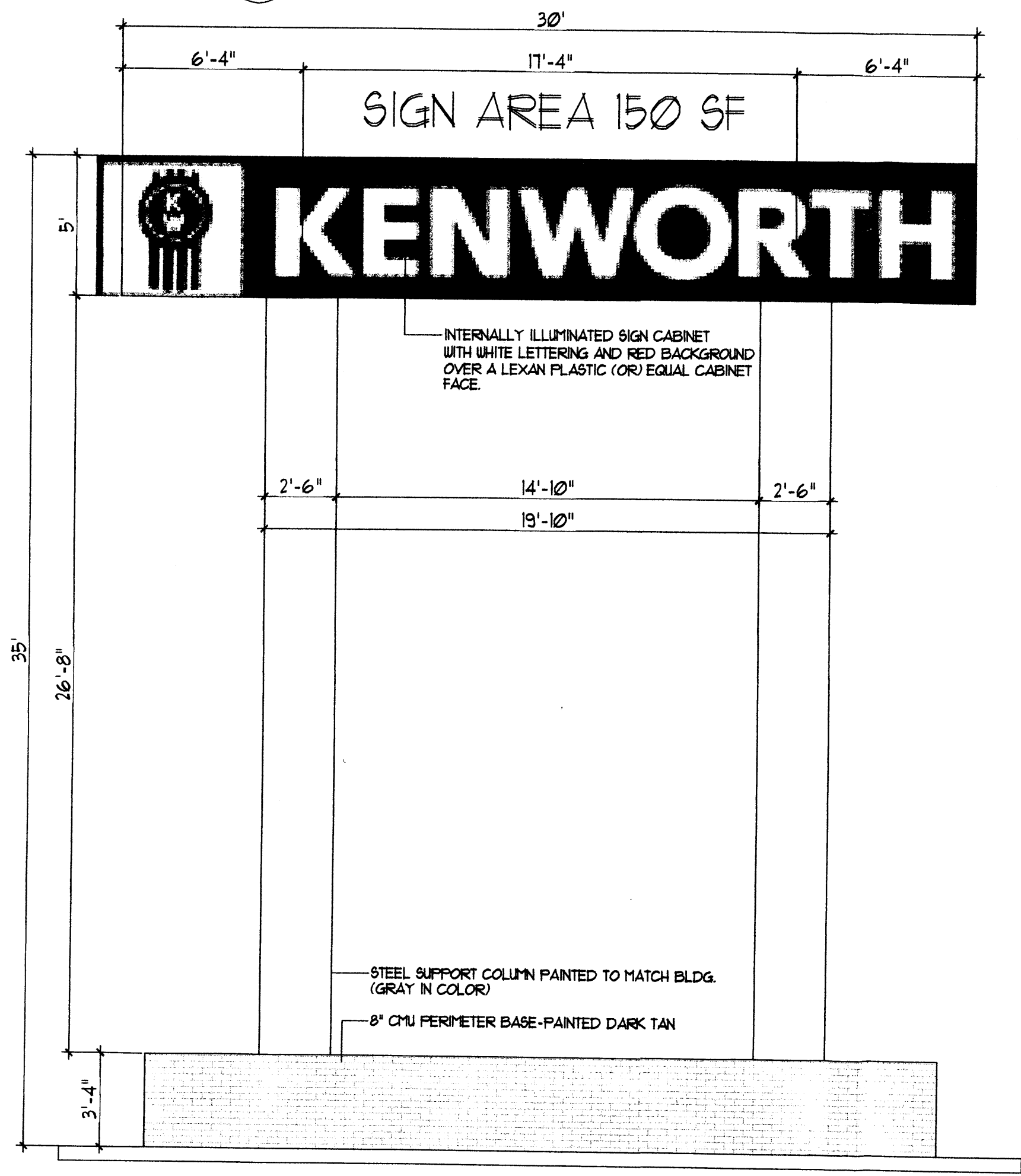
2 DUMPSTER SEC.
NT5



3 DUMPSTER SEC.
NT5



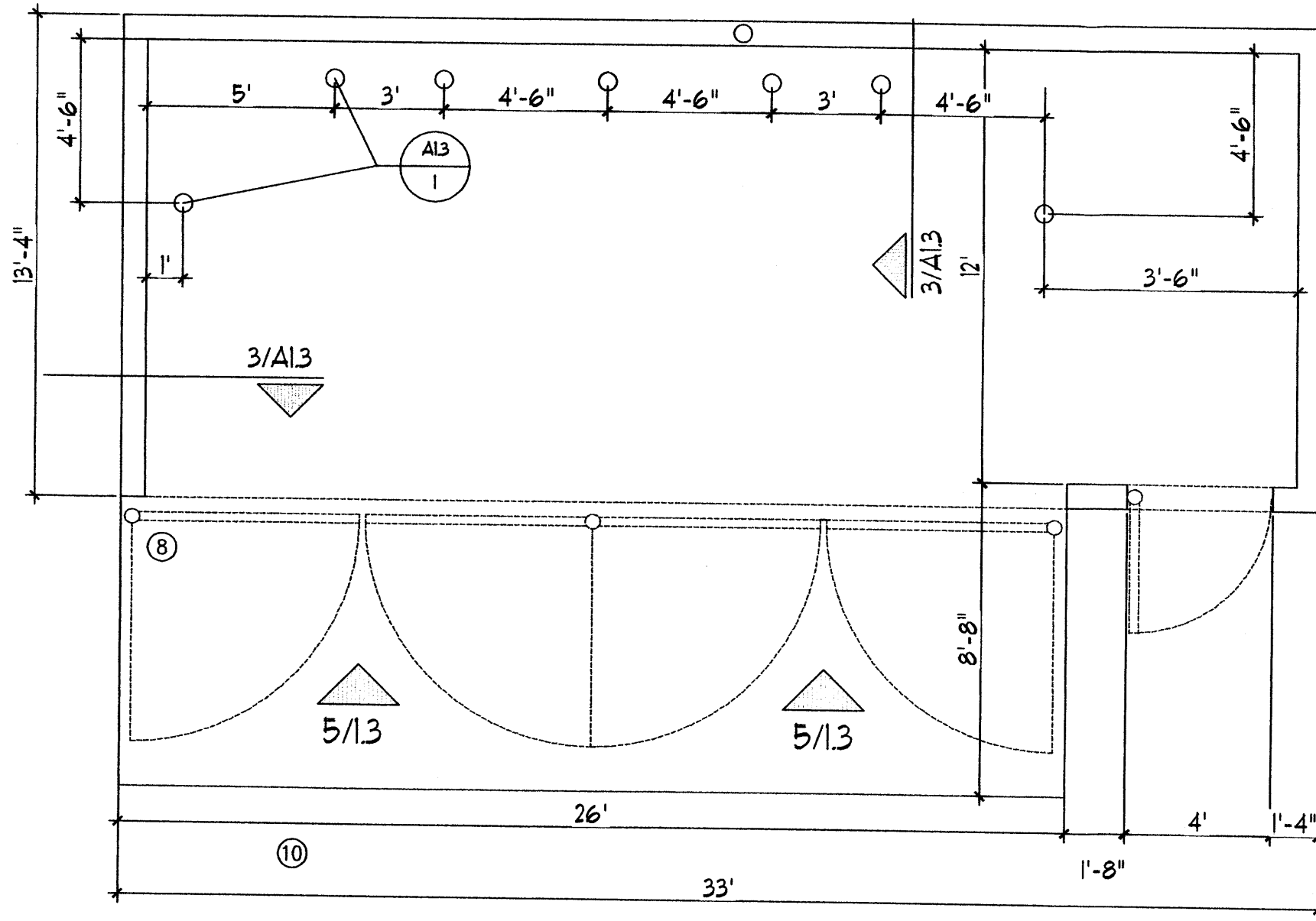
11 WROUGHT IRON FENCE ELEVATION
NT5



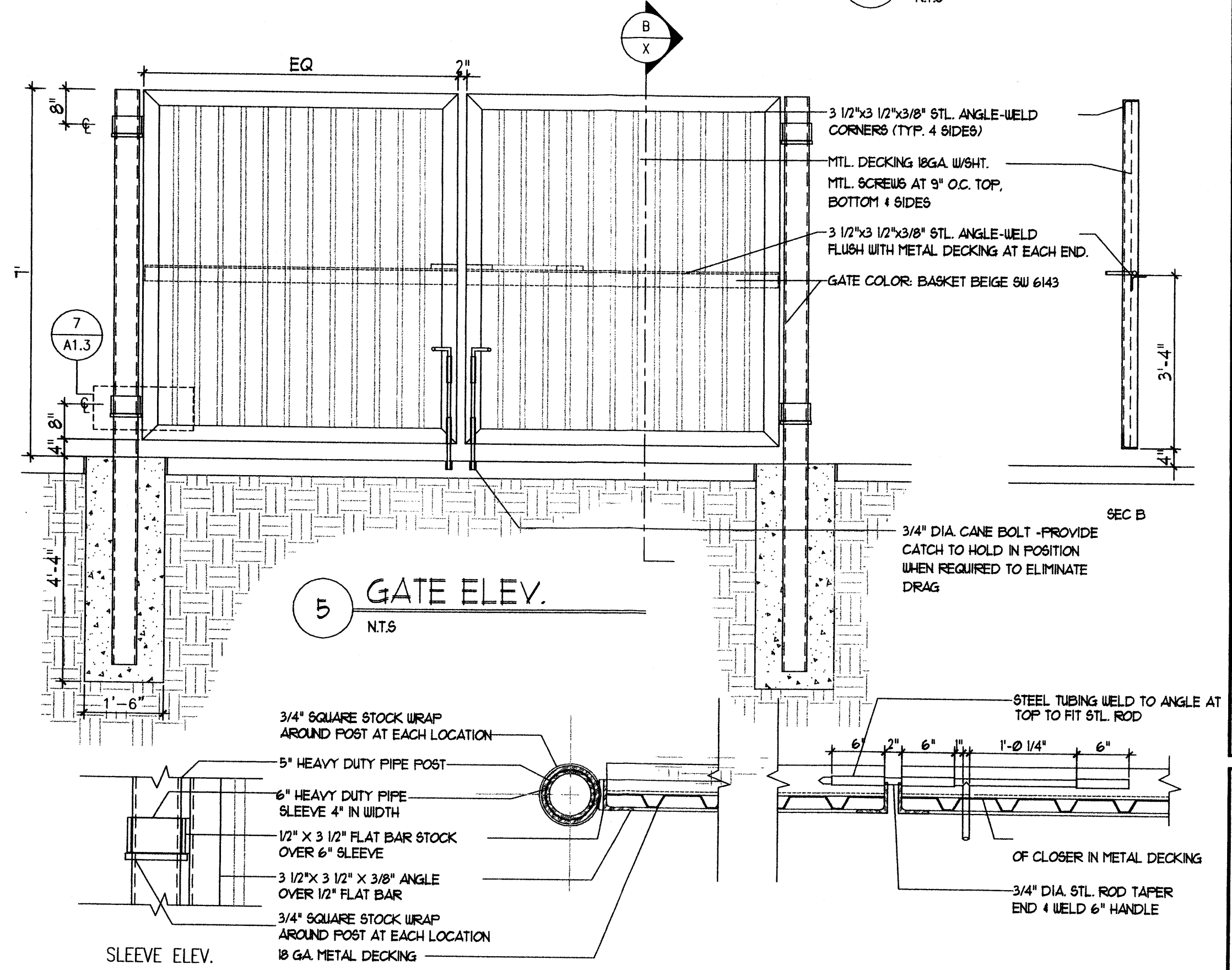
8 PROPOSED PYLON SIGN
SCALE: 1/4" = 1'-0"

NOTE: SIGN SIZE AND HEIGHT SHALL NOT EXCEED 100SF PER COA. REGULATION 14-16-2-19 (AX25XC11XB) OF THE ZONING CODE OR A VARIANCE SHALL BE SUBMITTED UNDER SEPERATE APPROVAL.

NOTE: IF A VARIANCE BE UNAPPROVED FOR ADDITIONAL SIGNAGE HEIGHT OR SIZE, THE MAXIMUM SIGNAGE ALLOWABLE WITHIN THE SITE AREA SHALL NOT EXCEED 100 SF AS REGULATED UNDER 14-6-2-19(AX25XC11XB) OF THE ZONING CODE.



4 DUMPSTER PLAN
NT5



5 GATE ELEV.
NT5

7 GATE POST/SLIDE BOLT DETAIL
NT5

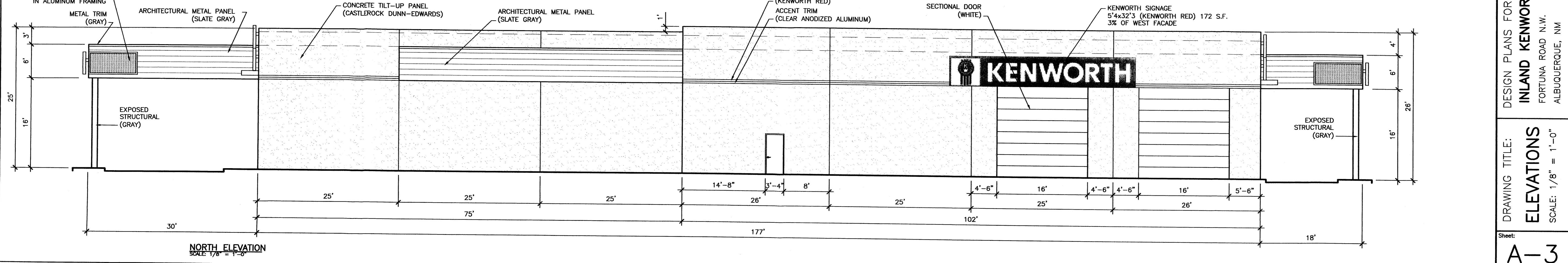
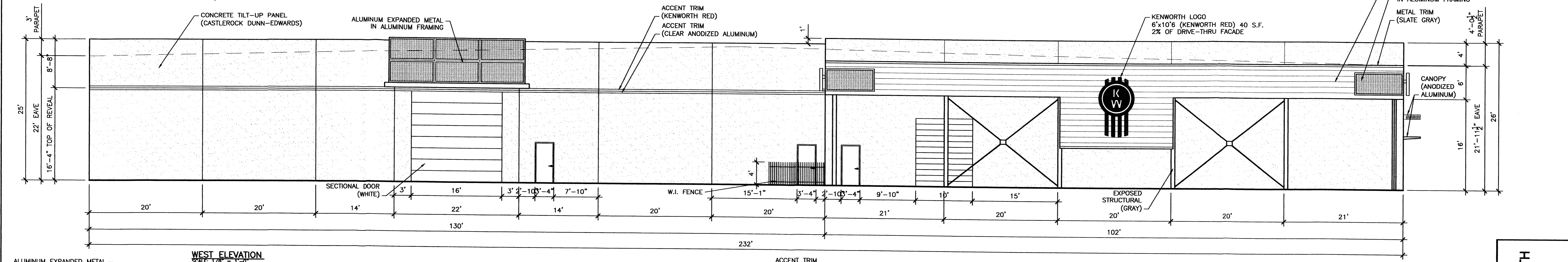
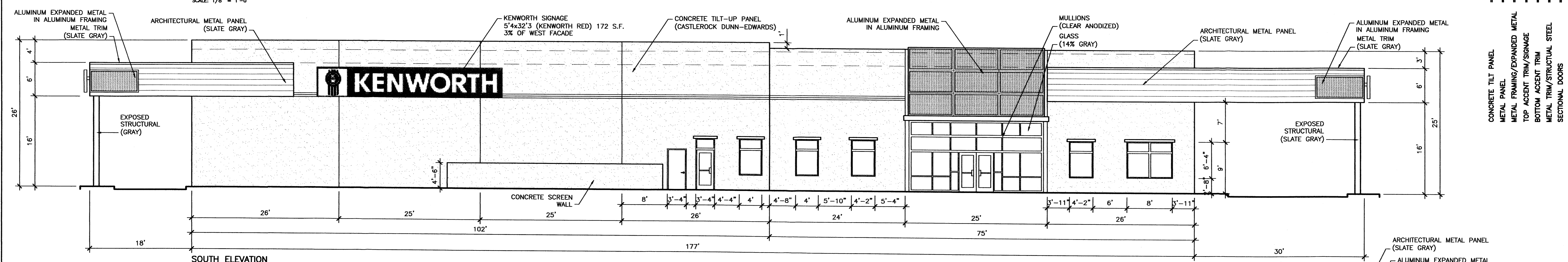
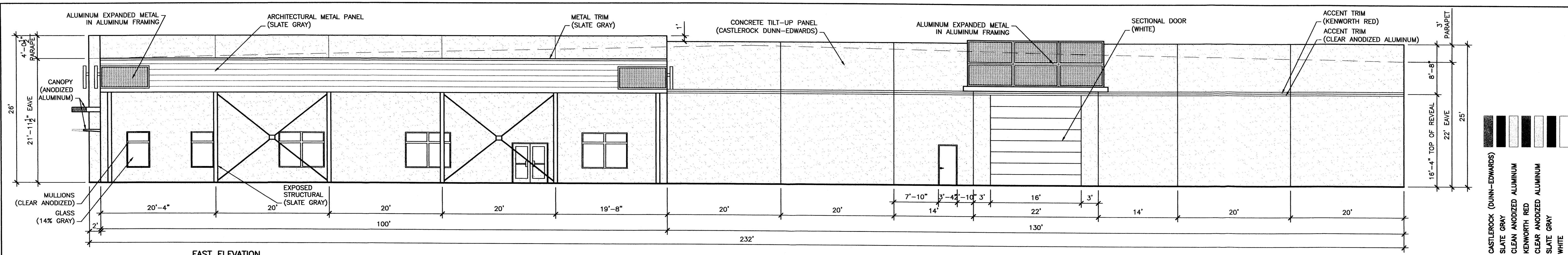
- KEYED NOTES
- 1 8" CMU WALL WITH 2 COAT SYN. STUCCO SYSTEM. COLOR TO MATCH BLDG. BASE
 - 2 FINISH GRADE.
 - 3 SLOPE STUCCO CAP.
 - 4 4-M BARS CONT. # BOTTOM OF FOOTING # 16" O.C. ACROSS BOTTOM OF FOOTING.
 - 5 1-5 BARS # TOP KNOCK-OUT BLOCK BOND BEAM. CONTINUOUS. 16 BARS # 3" O.C. VERTICAL GROUT REINFORCED CELLS, DURAWALL # 16" O.C. HORIZONTAL.
 - 6 1/2" EXPANSION JOINT MATERIAL
 - 7 4" CONCRETE SLAB 4000 PSI 3/4" AGGREGATE WITH 6X6 - 10X10 W/UM.
 - 8 6" CONCRETE APRON 4000 PSI 3/4" AGGREGATE WITH 6X6 - 10X10 W/UM W/ TURNDOWN EDGE.
 - 9 6" CONCRETE FILLED PIPE IN 16" DIA. X 2'-6" DEEP CONC. FOOTING. PAINT TO MATCH STUCCO FINISH.
 - 10 ASPHALT PAVING
 - 11 GROUT ALL CELLS SOLID BELOW GRADE. TYPICAL.
 - 12 2" VENT TO 45° ABOVE TOP OF ENCLOSURE WALL. PROVIDE BREATHABLE VENT CAP.
 - 13 CLEAN OUT
 - 14 CATCH BASIN ZURN Z-981 6" x 20", SANI-FLO CATCH BASIN FABRICATED 1/6 GAGE TYPE 304 STAINLESS STEEL. BASIN WITH BOLTED FLANGED CONNECTION COMPLETE WITH FLANGE GASKET. PROVIDE SPECIAL DUTY CLASS 12 Z-982-DGE DUCTILE IRON SLOTTED GRATE, AND SEDIMENT BASKET.

6 ENCLOSURE NOTES
NT5

REV	DATE	BY	REVISION
6			
5			
4			
3			
2			

MODULUS ARCHITECTS
 220 COPPER AVE. N.W. SUITE 350
 ALBUQUERQUE, NEW MEXICO 87102
 PHONE (505) 338-1499 FAX (505) 338-1498

PROJECT TITLE	INLAND KENWORTH
PROJECT MANAGER	STEPHEN DUNBAR, AIA
JOB NO.	XXXXX
DRAWN BY:	JUS
SHEET TITLE	SITE DETAILS
DATE:	4/4/12
SCALE:	AS NOTED
Sheet:	A13

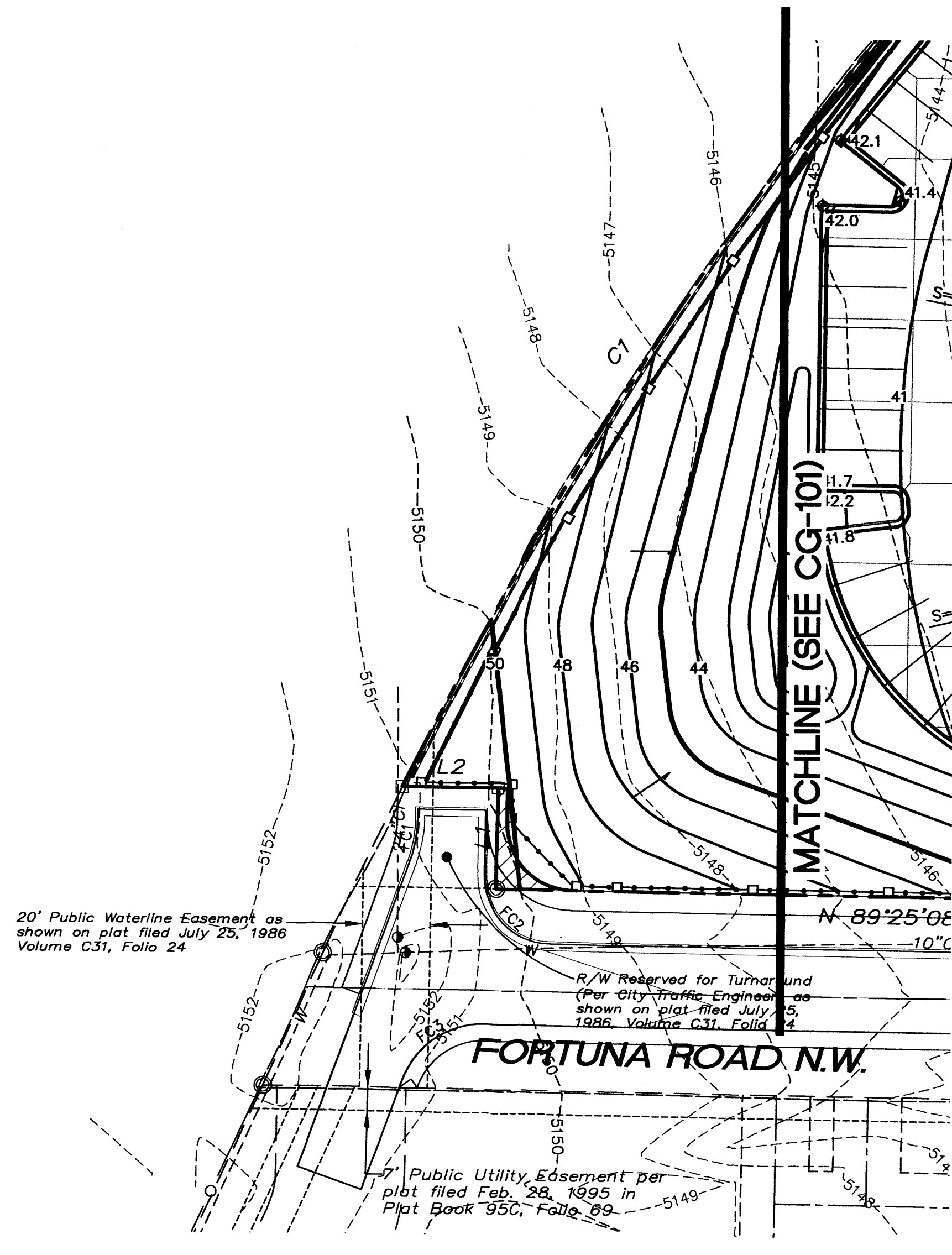
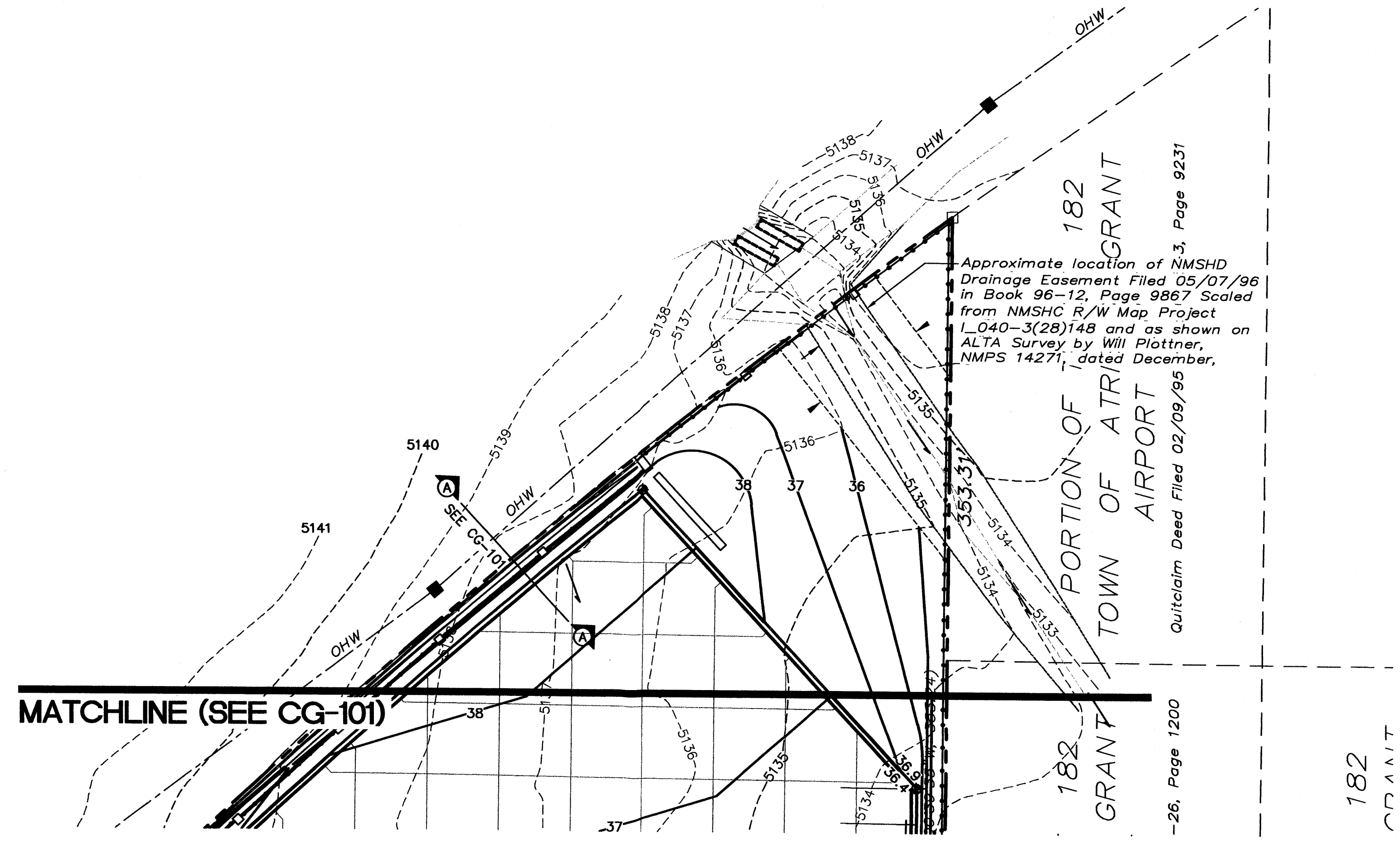
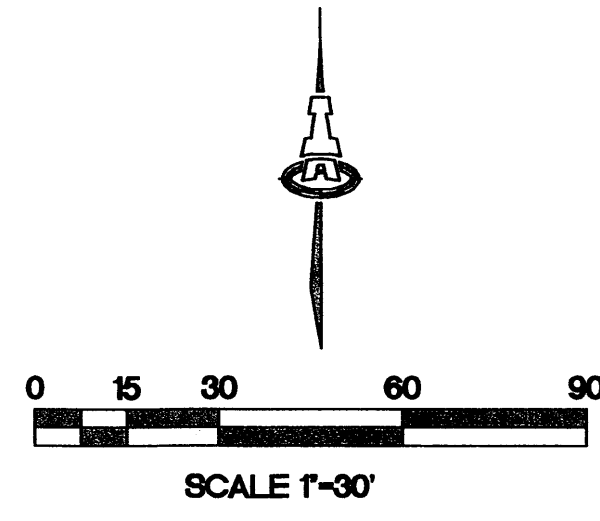


- CASTLEROCK (DUNN-EDWARDS)
 - SLATE GRAY
 - CLEAN ANODIZED ALUMINUM
 - KENWORTH RED
 - CLEAR ANODIZED ALUMINUM
 - SLATE GRAY
 - WHITE
-
- CONCRETE TILT PANEL
 - METAL PANEL
 - METAL FRAMING/EXPANDED METAL
 - TOP ACCENT TRIM/SIGNAGE
 - BOTTOM ACCENT TRIM
 - METAL TRIM/STRUCTURAL STEEL
 - SECTIONAL DOORS

DESIGN PLANS FOR:
INLAND KENWORTH
FORTUNA ROAD N.W.
ALBUQUERQUE, NM

DRAWING TITLE:
ELEVATIONS
SCALE: 1/8" = 1'-0"

Sheet:
A-3
of 3 Sheets



REVISIONS

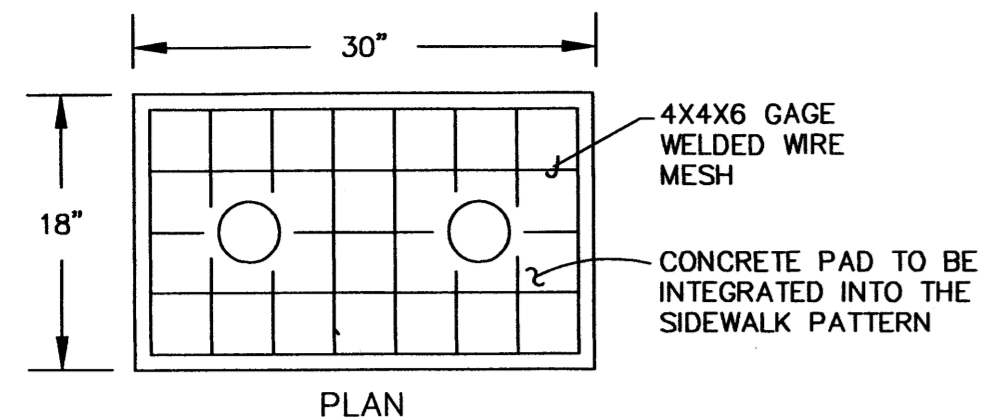
LORD CONSTRUCTORS, INC.
 1920 West Eleventh Street
 Upland, California 91786
SHALL RETAIN ALL COMMON LAW STATUTORY AND OTHER RESERVED RIGHTS AND RESERVATIONS INCLUDING REPRESENTED DESIGN AND SPECIFICATIONS.

DESIGN PLANS FOR:
INLAND KENWORTH
 FORTUNA ROAD N.W.
 ALBUQUERQUE, NM

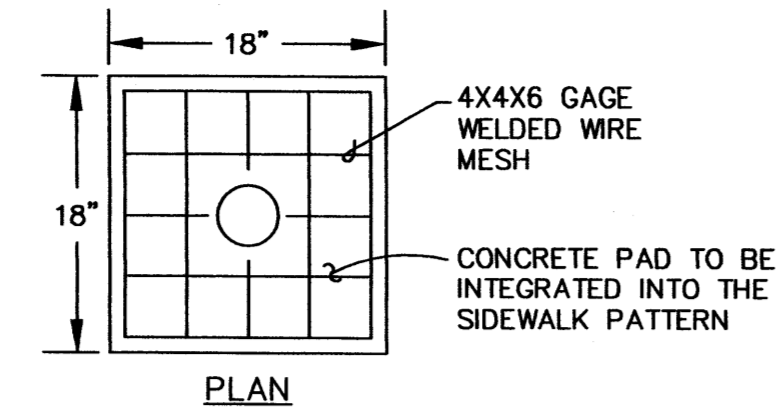
DRAWING TITLE:
CONCEPTUAL GRADING & DRAINAGE PLAN 2 OF 2
 SCALE: 1" = 40'

Date: 8/28/12
 Drawn By: DH
 Job: KENWORTH
 Job No.: L-800 ABC-
 Sheet: CG-102
 of Sheets

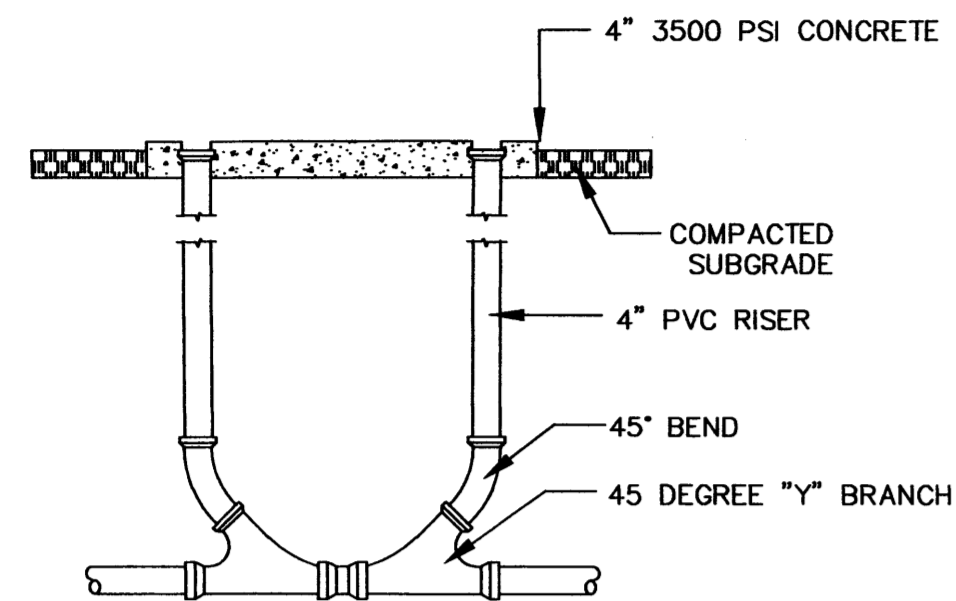
ISAACSON & ARFMAN, P.A.
 Consulting Engineering Associates
 128 Mamre Street N.E.
 Albuquerque, New Mexico 87108
 Ph. 505-268-8828 www.iacivil.com
 1941 CG-101.dwg Apr 23, 2013



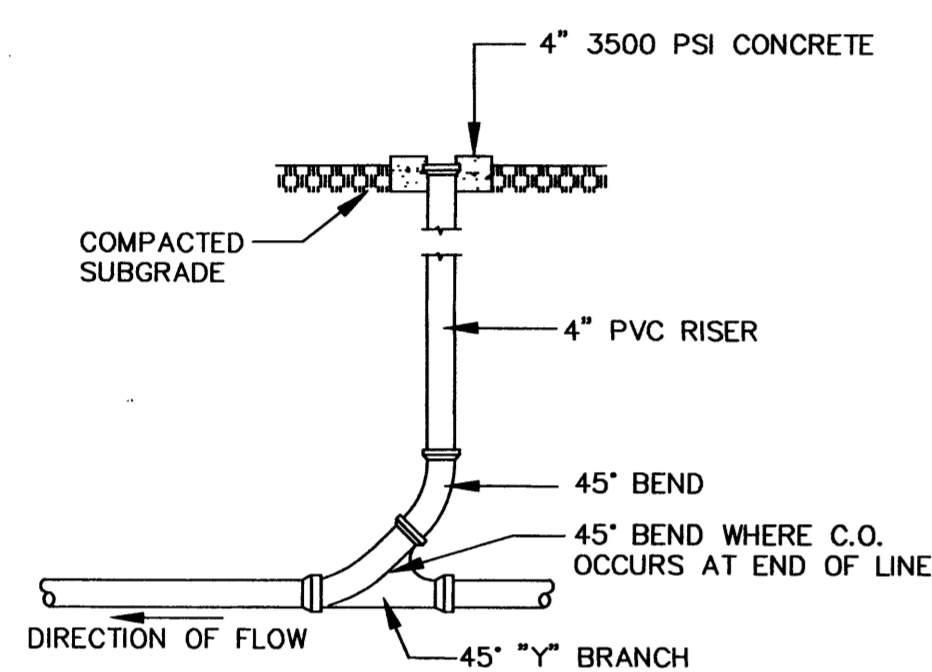
CONCRETE PAD DOUBLE CLEANOUT
SCALE: 1"=1'



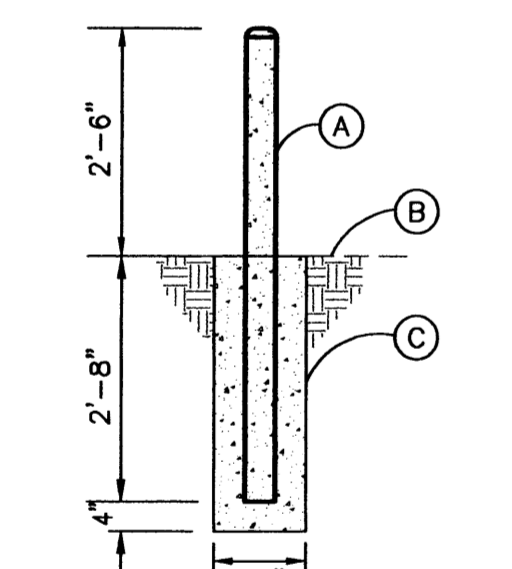
CONCRETE PAD SINGLE CLEANOUT
SCALE: 1"=1'



DOUBLE CLEANOUT DETAIL



SINGLE CLEANOUT DETAIL

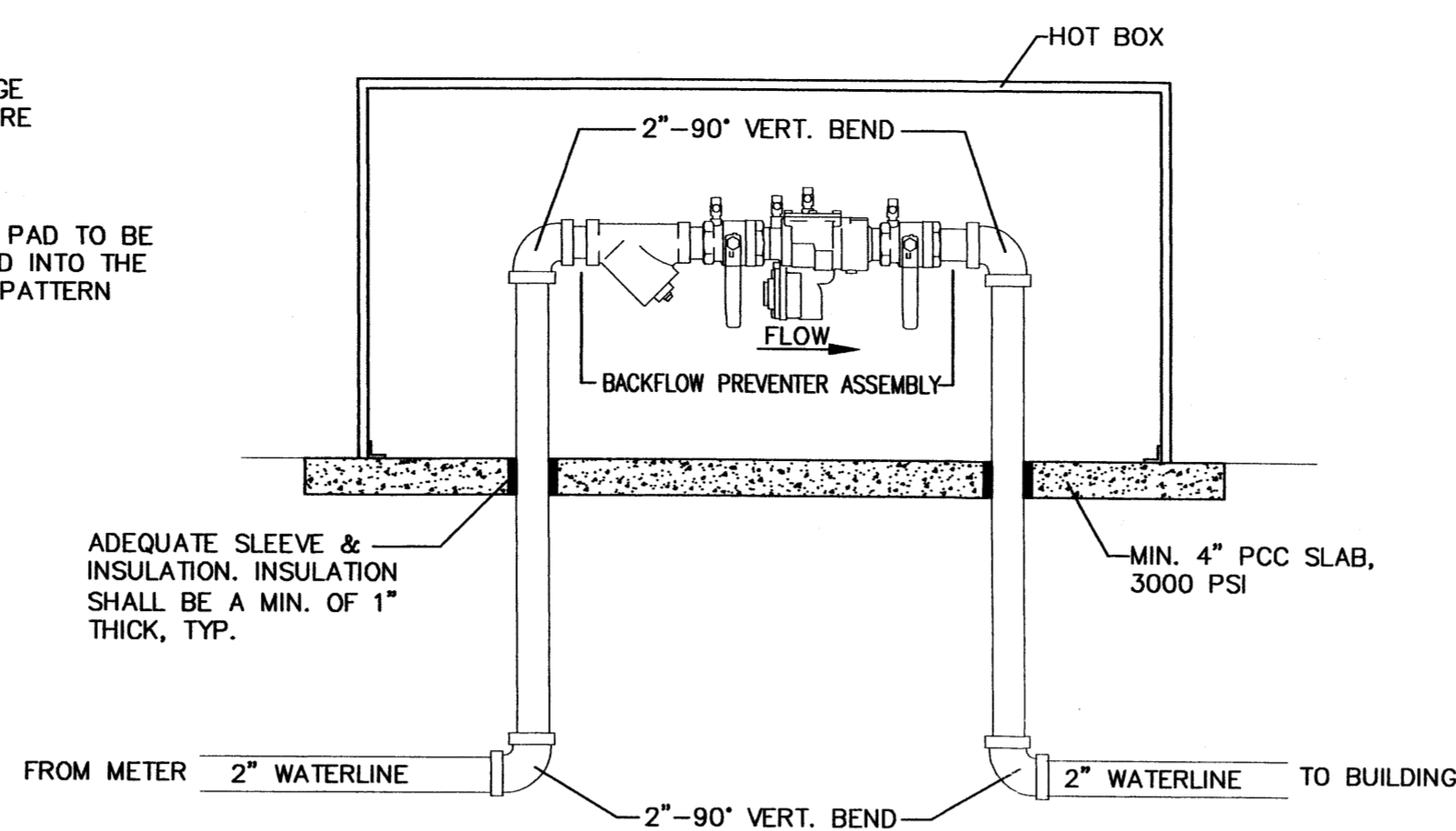


BOLLARD DETAIL

KEYED NOTES:

- A. 6" NOMINAL DIA. SCHEDULE 40 GALVANIZED STEEL PIPE. PAINT PIPE ABOVE GRADE BRIGHT YELLOW WITH OIL BASE ALKYD PRIMER AND OIL BASE ALKYD ENAMEL TOP COAT. FILL WITH 3000 PSI CONCRETE.
- B. EXISTING GRADE.
- C. CONCRETE, 3000 PSI @ 28 DAYS.

AFD PLANS CHECKING OFFICE
924-3611
APPROVED/DISAPPROVED
HYDRANT(S) ONLY
SIGNATURE & DATE



BACKFLOW PREVENTER
NTS

RESTRAINED JOINT LENGTHS, L_r, FOR TEES, (FT.)
ALL JOINTS AT THE TEE MUST BE RESTRAINED.

SIZE	RUN	BRANCH	RUN	BRANCH
10x10x10	20	1	10	32
10x10x8	20	1	10	5
10x10x6	20	1	10	1
10x10x4	20	1	10	1
8x8x8	20	1	10	19
8x8x6	20	1	10	1
8x8x4	20	1	10	1
6x6x6	20	1	10	3
6x6x4	20	1	10	1

RESTRAINED JOINT LENGTHS, L_r, FOR HORIZONTAL BENDS, VALVES, AND DEAD ENDS, (FT.)

SIZE	HORZ. BENDS				VALVES & DEAD ENDS
	90°	45°	22 1/2°	11 1/4°	
10	31	13	7	4	72
8	27	11	6	3	60
6	20	9	4	2	46
4	15	6	3	2	32

RESTRAINED JOINT LENGTHS, L_r, FOR REDUCERS, (FT.)
MINIMUM UNOBSTRUCTED, STRAIGHT-RUN LENGTH: RESTRAIN EITHER LARGE PIPE, OR SMALL PIPE.

SIZE	LARGE SIDE		SIZE	LARGE SIDE	
	30	54		10x6	53
12x10	30	54	10x6	53	
12x8	54	10x4	71		
12x6	74	8x6	31		
12x4	89	8x4	52		
10x8	29	8x4	29		

THESE TABLES ARE BASED UPON THE FOLLOWING CRITERIA:

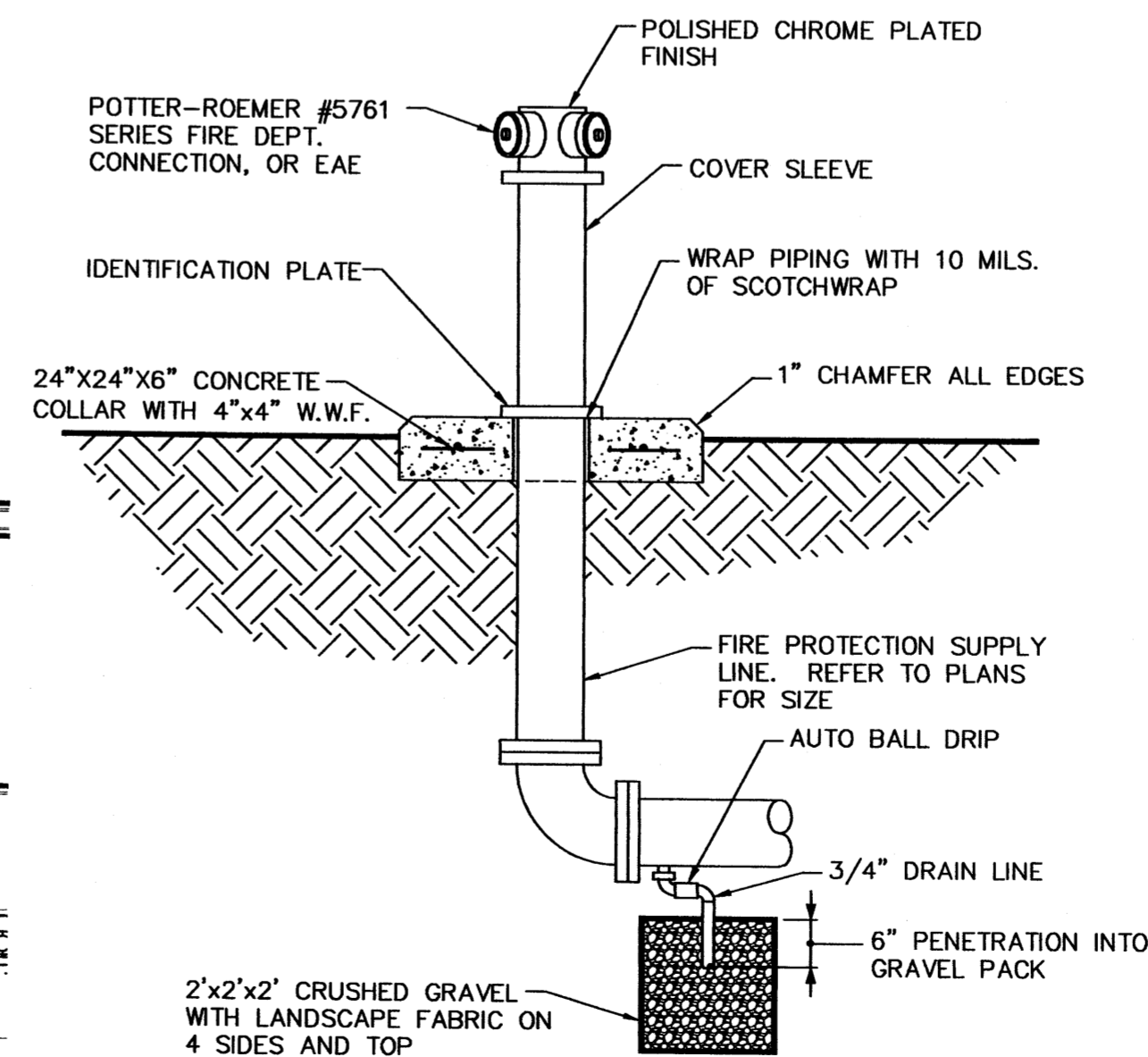
- DEPTH OF BURY: 3.0 FT. MINIMUM
- FACTOR OF SAFETY: 1.25
- MATERIAL: PVC PIPE
- SOIL TYPE: GM/SM - SILTY GRAVELS AND SILTY SANDS, GRAVEL-SAND-SILT MIXTURES.
- TEST PRESSURE: 150 PSI
- TRENCH TYPE 4: PIPE BEDDED IN SAND, GRAVEL, OR CRUSHED STONE TO DEPTH OF 1/8 PIPE DIAMETER, 4 INCH MINIMUM BACKFILL COMPACTED TO TOP OF PIPE.

DIFFERENT CRITERIA, E.G., DUCTILE IRON PIPE, GREATER DEPTH OF BURY, ETC., WILL REQUIRE DIFFERENT RESTRAINED LENGTHS. THESE MUST BE CALCULATED BY A QUALIFIED PROFESSIONAL ENGINEER AND APPROVED BY ABCWA.

NOTES:

1. ALL MECHANICAL JOINTS SHALL BE RESTRAINED AT THE FITTING.
2. THE CONTRACTOR SHALL PROVIDE A MINIMUM PIPE LENGTH OF 20 LF FROM ALL MECHANICAL JOINTS. ALL PIPE JOINTS WITHIN 20 LF OF A MECHANICAL JOINT SHALL BE RESTRAINED AT THE CONTRACTOR'S EXPENSE.
3. THE CONTRACTOR SHALL RESTRAIN ALL PIPE JOINTS IN THE SPECIFIED DISTANCE LISTED IN THE TABLE ON THIS SHEET.
4. THE CONTRACTOR SHALL RESTRAIN ALL FIRE HYDRANT JOINTS FROM THE TEE ON THE MAIN TO THE FIRE HYDRANT FLANGE.
5. THE CONTRACTOR SHALL INSTALL PCC BLOCKING AT ALL CAPS (UNLESS OTHERWISE NOTED ON PLANS).

RESTRAINED JOINT LENGTHS FOR WATERLINE FITTINGS



FREE-STANDING FIRE DEPARTMENT CONNECTION DETAIL
NTS

GENERAL NOTES

1. EXISTING UTILITY LINES ARE SHOWN IN AN APPROXIMATE MANNER ONLY AND MAY BE INCOMPLETE OR OBSOLETE. SUCH LINES MAY OR MAY NOT EXIST WHERE SHOWN OR NOT SHOWN. ALL UTILITIES SHOULD BE FIELD VERIFIED AND LOCATED BY THE CONTRACTOR PRIOR TO COMMENCEMENT OF ANY CONSTRUCTION. THE CONTRACTOR IS FULLY RESPONSIBLE FOR ANY AND ALL DAMAGE CAUSED BY ITS FAILURE TO LOCATE, IDENTIFY AND PRESERVE ANY AND ALL EXISTING UTILITIES, PIPELINES, AND UNDERGROUND UTILITY LINES.
2. WATER AND/OR SANITARY SEWER IMPROVEMENTS WITHIN A PUBLIC EASEMENT OR RIGHT-OF-WAY SHALL BE BUILT BY SEPARATE, PUBLIC WORK ORDER, PLANS.
3. BUILD SINGLE AND DOUBLE SEWER CLEANOUTS PER DETAILS ON THIS SHEET.
4. CONTRACTOR SHALL NOT USE VIBRATORY COMPACTION EQUIPMENT OR HEAVY VEHICLES OVER EXISTING UTILITIES.
5. SITE STORM DRAIN AND GAS LINES ARE SHOWN FOR GENERAL INFORMATION ONLY TO PROVIDE AN OVERVIEW OF SITE UTILITIES AND POTENTIAL CONFLICTS. SEE MECHANICAL PLANS FOR GAS LINE SIZING.

KEYED NOTES

WATER ○

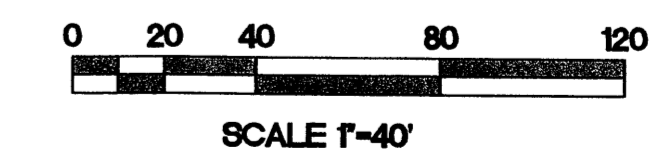
1. 10" X 6" TAPPING SLEEVE W/ RESTRAINT.
2. 10" X 8" TAPPING SLEEVE W/ RESTRAINT.
3. 8" X 6" TEE W/ RESTRAINT.
4. 8" 90° BEND W/ RESTRAINT.
5. 8" 45° BEND W/ RESTRAINT.
6. 4" 90° BEND W/ RESTRAINT.
7. 8"x4" REDUCER W/ RESTRAINT.
8. 6" TAPPING VALVE W/ RESTRAINT.
9. 8" TAPPING VALVE W/ RESTRAINT.
10. 6" GATE VALVE W/ RESTRAINT.
11. VALVE BOX PER COA STD DWGS 2326 AND 2329.
12. 4" FIRE HYDRANT PER COA STD DWG 2340.
13. POST INDICATOR VALVE (PIV).
14. FIRE DEPARTMENT CONNECTION (FDC).
15. DOUBLE METER SERVICE W/ BOX PER COA STD DWG'S 2362 AND 2363 (2" DOMESTIC & 1" IRRIGATION).
16. FEBCO MODEL 860 PRESSURE REDUCING BACK FLOW PREVENTER W/ MODEL HB2 HOTBOX OUTDOOR FREEZE PROTECTION OR ENGINEER APPROVED EQUAL.
17. 3/4" CONDUIT W/ PULL CORD FOR PIV SENSOR WIRE FROM BUILDING TO PIV PLACED IN SAME TRENCH ABOVE FIRE LINE.

SEWER ○

1. NEW 6" SAS SERVICE PER COA STD DWG 2125.
2. SINGLE CLEANOUT PER DETAIL THIS SHEET.
3. DOUBLE CLEANOUT PER DETAIL THIS SHEET.
4. 1500 GALLON CLARIFIER W/ SAMPLE BOX.
5. 6"x4" WYE.
6. 6"x4" REDUCER.
7. 4" WYE.
8. 4" 45° BEND.
9. BOLLARD PER DETAIL THIS SHEET.

LEGEND

- WATER METER & BOX
- GATE VALVE W/ VALVE BOX
- FIRE HYDRANT
- WATER LINE W/ FITTING
- SAS SERVICE LINE
- SAS SINGLE CLEANOUT
- SAS DOUBLE CLEANOUT



SCALE 1"=40'

ISAACSON & ARFMAN, P.A.
Consulting Engineering Associates
128 Monroe Street N.E.
Albuquerque, New Mexico 87108
Ph. 505-268-8828 www.isaarl.com
1941 CU-101.dwg Apr 30, 2013

REVISIONS

DESIGN PLANS FOR:
INLAND KENWORTH
FORTUNA ROAD N.W.
ALBUQUERQUE, NM

DRAWING TITLE:
CONCEPTUAL UTILITY PLAN
SCALE: 1" = 40'

Date: 8/28/12
Drawn By: DH
Job: KENWORTH
Job No.: L-800 ABC-
Sheet: CU-101
of Sheets

LORD CONSTRUCTORS, INC.
1920 West Eleventh Street
Upland, California 91786
SHALL RETAIN ALL COMMON LAW STATUTORY AND OTHER RESERVED RIGHTS INCLUDING REPRESENTATION AND SPECIFICATIONS