



CLAUDIO VIGIL ARCHITECTS

1801 Rio Grande Boulevard, N.W.
Albuquerque, New Mexico
Phone: (505) 842-1113
Fax: (505) 842-1330

OWNERSHIP OF INSTRUMENTS OF SERVICE
All design concepts, details, specifications, plans, computer files, field data, notes and other documents and instruments prepared by Ambysis P.C., D.B.A. Claudio Vigil Architects, as instruments of service shall remain the property of Ambysis P.C., Claudio Vigil Architects, P.C. Architect shall retain all common law, statutory and other reserved rights, including the copyright thereto.

CONSULTANTS

PROFESSIONAL SEAL



FEDEX FREIGHT ALBUQUERQUE

SERVICE AND DISTRIBUTION CENTER

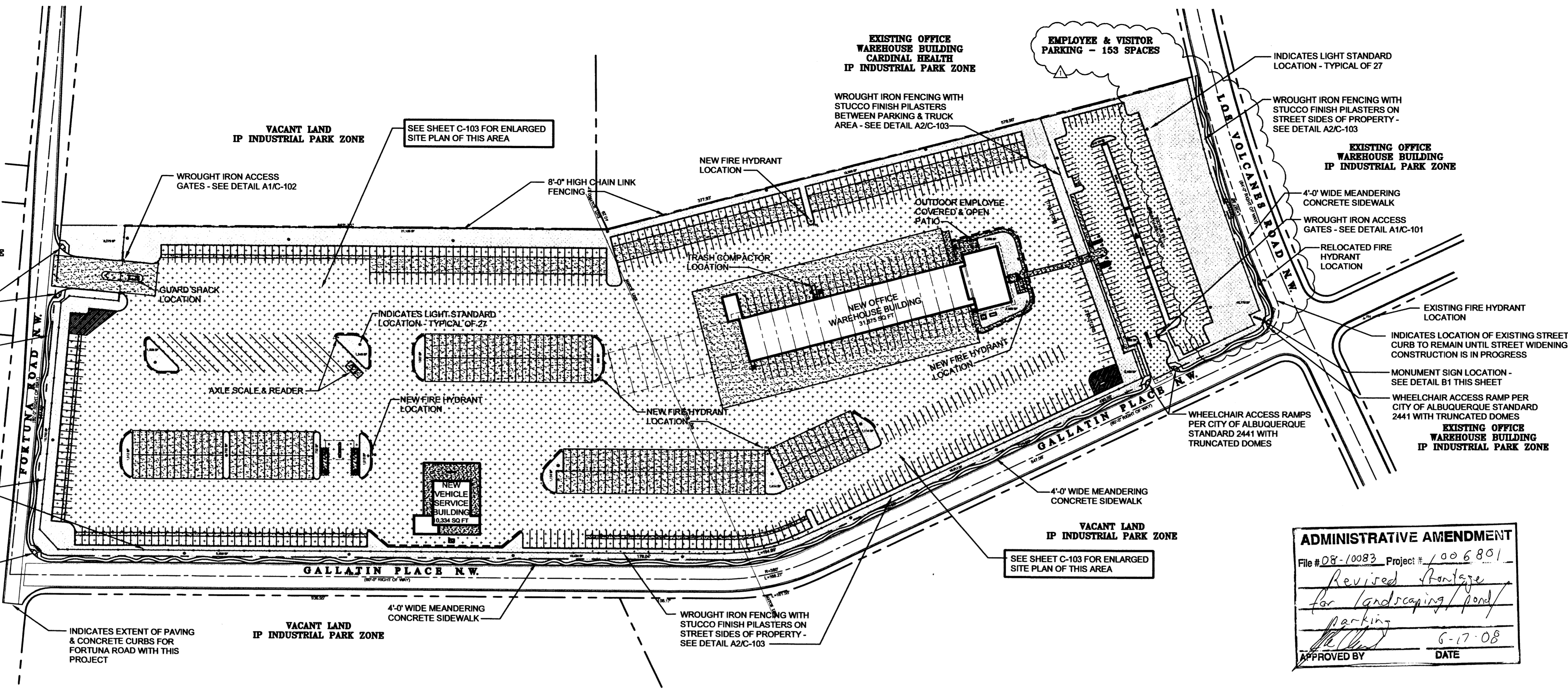
7601 LOS VOLCANES ROAD, N.W.
ALBUQUERQUE, NEW MEXICO

PROJECT NUMBER: 07305
DRAWING FILE: FEDEX-ATRISCO-C101-SDP
DRAWN BY: SMF
CHECK BY: CAV
COPYRIGHT: CLAUDIO VIGIL ARCHITECTS 2008
DATE: JUNE 13, 2008

SHEET TITLE
MASTER SITE PLAN

SHEET NUMBER
C-101

1089001



ADMINISTRATIVE AMENDMENT
File # 08-10083 Project # 1006801
Revised Plan for landscaping/parking
APPROVED BY: [Signature] DATE: 6-17-08



MASTER SITE PLAN

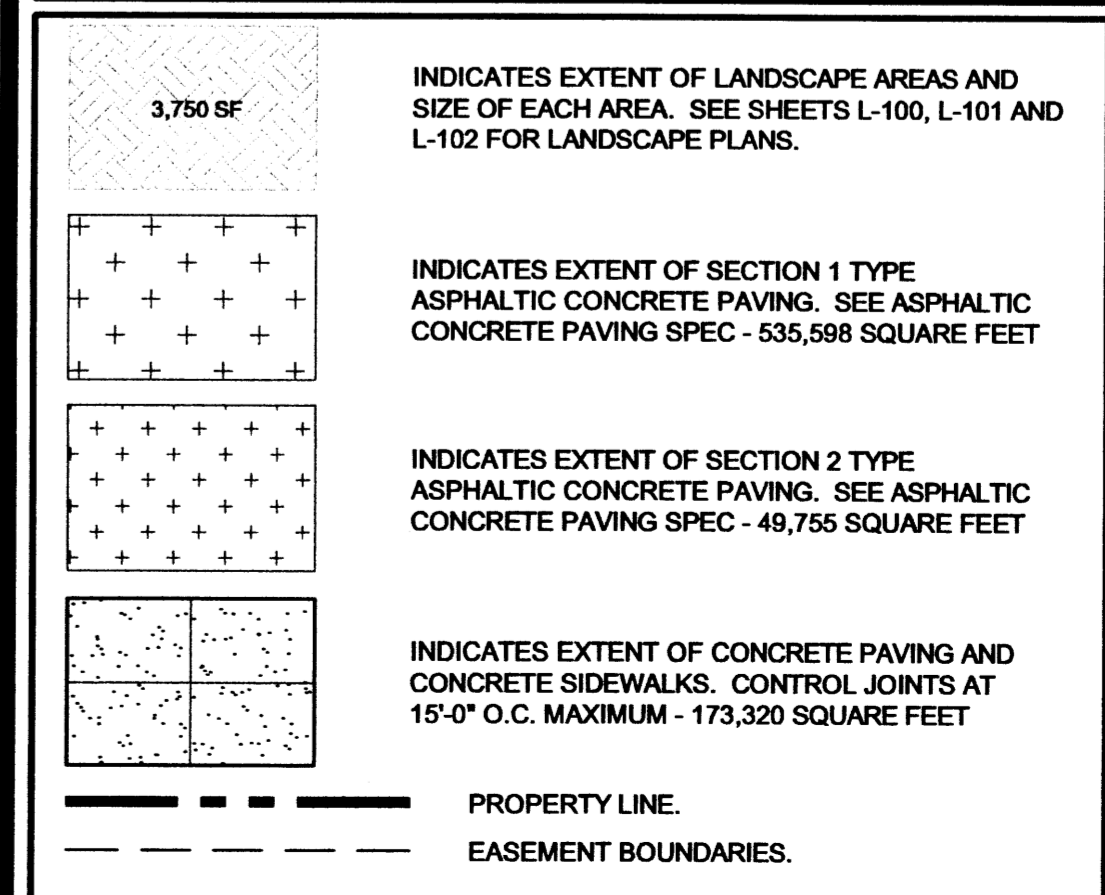
C1

SCALE 1" = 100'-0"

GENERAL NOTES

- 1. THE CONTRACTOR SHALL REFER TO THE OWNER'S SURVEY FOR THE METERS AND BOUNDS DESCRIPTION.
- 2. THE CONTRACTOR SHALL VERIFY THE LOCATIONS OF ALL UNDERGROUND UTILITIES PRIOR TO COMMENCING WITH CONSTRUCTION OR DEMOLITION.
- 3. ALL WORK WITHIN THE RIGHT OF WAY SHALL MEET CITY OF ALBUQUERQUE STANDARDS.
- 4. THE SQUARE FOOTAGES SHOWN ON THESE PLANS ARE FOR ARCHITECTURAL AND BUILDING CODE PURPOSES ONLY.
- 5. TREES AND SHRUBS SHALL BE PLANTED NO LESS THAN 3'-0" FROM ANY EXISTING OR NEW UNDERGROUND UTILITY LINES.
- 6. ALL NEW FIRE HYDRANTS SHALL BE OPERATING PRIOR TO THE BEGINNING OF CONSTRUCTION.
- 7. GENERAL CONTRACTOR TO INSTALL ALL OWNER FURNISHED CARD READER PEDESTALS.

SITE PLAN LEGEND

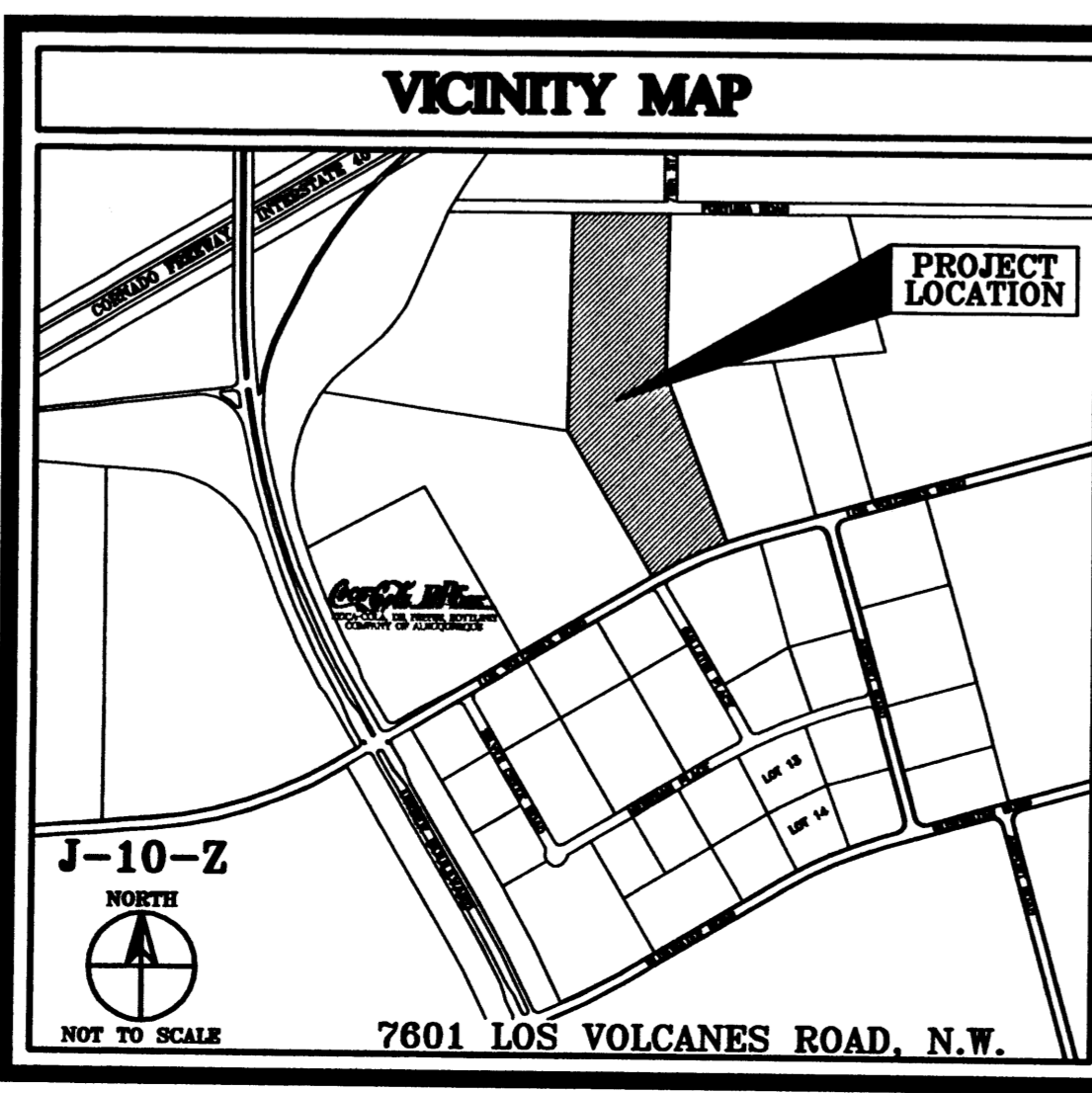


PROJECT INFORMATION

PROJECT: FEDERAL EXPRESS - FEDEX FREIGHT ALBUQUERQUE SERVICE AND DISTRIBUTION CENTER
LOCATION: 7601 LOS VOLCANES ROAD, N.W. ALBUQUERQUE, NEW MEXICO
OWNER: BRUNACINI DEVELOPMENT COMPANY, LTD. 7400 MERIDIAN PLACE, N.W. ALBUQUERQUE, NEW MEXICO
ARCHITECT: CLAUDIO VIGIL ARCHITECTS 1801 RIO GRANDE BOULEVARD, N.W. ALBUQUERQUE, NEW MEXICO
LEGAL DESCRIPTION: TRACT C, MERIDIAN BUSINESS PARK PHASE II
UNIFORM PROPERTY CODE: 101005813511530103
ZONING ATLAS MAP: J-10-Z
CURRENT ZONING CLASSIFICATION: IP, INDUSTRIAL PARK ZONE
PROPOSED ZONING CLASSIFICATION: NO CHANGE - IP, INDUSTRIAL PARK ZONE
BUILDING FUNCTION: NEW OFFICE WAREHOUSE DISTRIBUTION CENTER WITH VEHICLE SERVICE BUILDING
CONSTRUCTION TYPE: TYPE II-B CONSTRUCTION WITH 100% AUTOMATIC FIRE SPRINKLER SYSTEM
TOTAL BUILDING AREA:
OFFICE WAREHOUSE: OFFICE AREA = 5,380 SQUARE FEET
WAREHOUSE = 26,296 SQUARE FEET
TOTAL BUILDING AREA = 31,676 SQUARE FEET
TOTAL BUILDING & ROOFED AREA = 40,162 SQUARE FEET
SHOP BUILDING: TOTAL BUILDING AREA = 5,590 SQUARE FEET
TOTAL BUILDING & ROOFED AREA = 11,700 SQUARE FEET

PROJECT INFORMATION

TOTAL LOT AREA: 976,759 SQUARE FEET, 22.4233 ACRES
NET LOT AREA: TOTAL LOT AREA = 976,759 SQUARE FEET
MINUS TOTAL BUILDING AREA = 42,230 SQUARE FEET
MINUS ROW LANDSCAPING = 15,017 SQUARE FEET
TOTAL NET LOT AREA = 919,512 SQUARE FEET
TOTAL PARKING/PAVED AREA: 758,673 SQ FT
TOTAL LANDSCAPE AREA REQUIRED: 137,926 SQ FT
TOTAL LANDSCAPE AREA PROVIDED: 153,881 SQ FT
PERCENTAGE OF SITE LANDSCAPED: 15.75 %
LANDSCAPE TO PARKING AREA RATIO: 1 TO 4.9283
PARKING ANALYSIS:
OFFICE & SHOP AREA = 15,935 / 200 = 79,675 PARKING SPACES
WAREHOUSE AREA = 26,295 / 2000 = 13,1475 PARKING SPACES
TOTAL = 92,822 PARKING SPACES
TOTAL PARKING SPACES PROVIDED = 93 PARKING SPACES
TOTAL PARKING SPACES PROVIDED = 153 PARKING SPACES
INCLUDES 10 ACCESSIBLE PARKING SPACES - 2 REGULAR CAR ACCESSIBLE AND 2 VAN ACCESSIBLE - ADDITIONALLY 4 MOTORCYCLE PARKING SPACES
PARKING SPACE SIZES: 9'-0" WIDE x 18'-0" LONG WITH 2'-0" OVERHANG
BICYCLE SPACES: 93 PARKING SPACES / 20 = 4.65 BICYCLE SPACES
TOTAL BICYCLE SPACES REQUIRED = 5 BICYCLE SPACES
TOTAL BICYCLE SPACES PROVIDED = 8 BICYCLE SPACES (4 BIKES PER BIKE RACK)
SITE LIGHTING:
NEW SITE AREA LIGHTS SHALL BE POLE MOUNTED AND LIGHT PARKING & TRUCK AREAS WITHOUT SHINING ONTO ADJACENT SITES. STREET LIGHTS - 30'-0" TO 40'-0" ABOVE ROADWAY, PARKING LIGHTS - 20'-0" TO 30'-0" ABOVE PARKING LOT, AREA LIGHTING - 10'-0" TO 15'-0" ABOVE GRADE
CITY REFERENCE NUMBERS: Z-92-57





CLAUDIO VIGIL ARCHITECTS

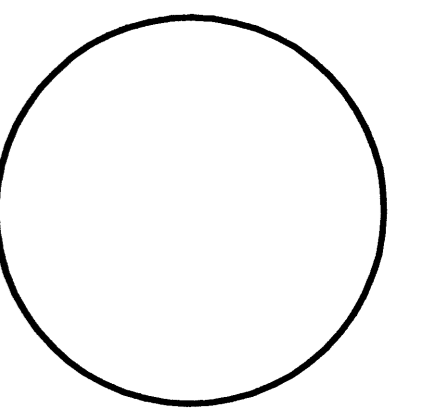
1801 Rio Grande Boulevard, N.W.
Albuquerque, New Mexico
Phone: (505) 842-1113
Fax: (505) 842-1330

OWNERSHIP OF INSTRUMENTS OF SERVICE
All design concepts, details, specifications, plans, computer files, field data, notes and other documents and instruments prepared by Ambysis P.C., D.B.A. Claudio Vigil Architects, as instruments of service shall remain the property of Ambysis P.C., Claudio Vigil Architects, P.C. Architect shall retain all common law, statutory and other reserved rights, including the copyright thereto.

CONSULTANTS

Blank area for listing consultants.

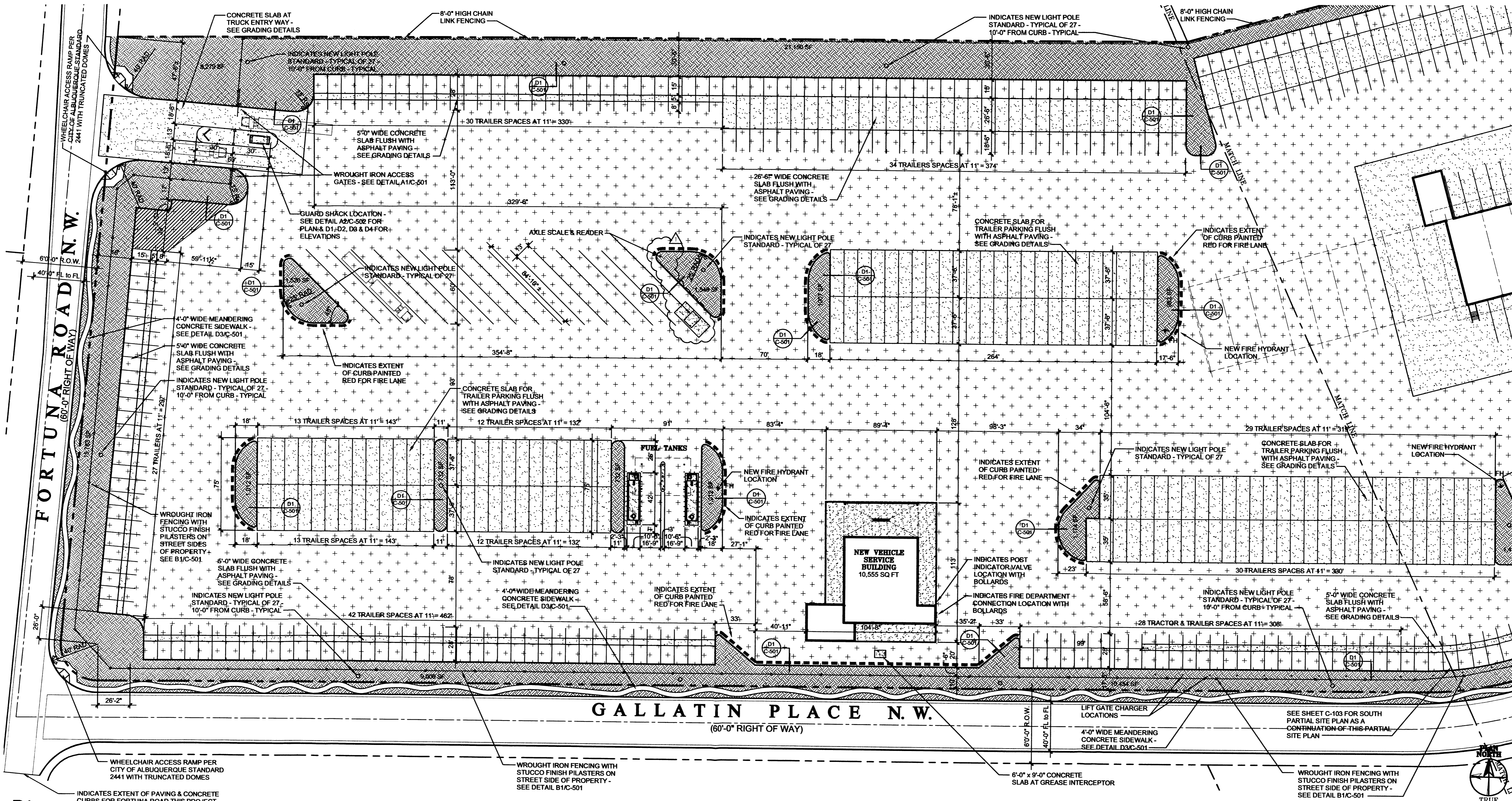
PROFESSIONAL SEAL



FEDEX FREIGHT ALBUQUERQUE

SERVICE AND DISTRIBUTION CENTER

7601 LOS VOLCANES ROAD, N.W.
ALBUQUERQUE, NEW MEXICO



B1
SCALE: 1" = 40'-0"
ENLARGED PARTIAL SITE PLAN

SITE PLAN LEGEND

- 3,750 SF: INDICATES EXTENT OF LANDSCAPE AREAS AND SIZE OF EACH AREA. SEE SHEETS L-100, L-101 AND L-102 FOR LANDSCAPE PLANS.
- [Symbol: Grid of crosses]: INDICATES EXTENT OF SECTION 1 TYPE ASPHALTIC CONCRETE PAVING. SEE ASPHALTIC CONCRETE PAVING SPEC - 535,598 SQUARE FEET
- [Symbol: Grid of dots]: INDICATES EXTENT OF SECTION 2 TYPE ASPHALTIC CONCRETE PAVING. SEE ASPHALTIC CONCRETE PAVING SPEC - 49,755 SQUARE FEET
- [Symbol: Grid of squares]: INDICATES EXTENT OF CONCRETE PAVING AND CONCRETE SIDEWALKS. CONTROL JOINTS AT 15'-0" O.C. MAXIMUM - 173,320 SQUARE FEET
- : PROPERTY LINE.
- - - - -: EASEMENT BOUNDARIES.

MARK	DATE	DESCRIPTION
1	5-9-08	ADMINISTRATIVE AMENDMENT

PROJECT NUMBER: 07305
DRAWING FILE: FEDEX-ATRISCO-C102-ESDP
DRAWN BY: SMF
CHECK BY: CAV
COPYRIGHT: CLAUDIO VIGIL ARCHITECTS 2007
DATE: JUNE 13, 2008

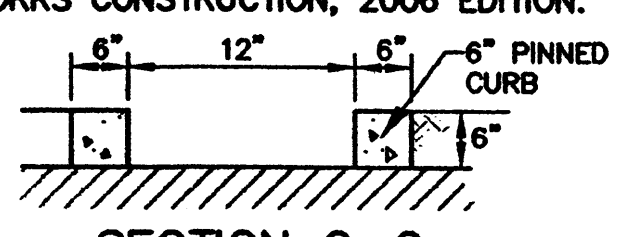
SHEET TITLE
ENLARGED PARTIAL SITE PLAN

SHEET NUMBER
C-102

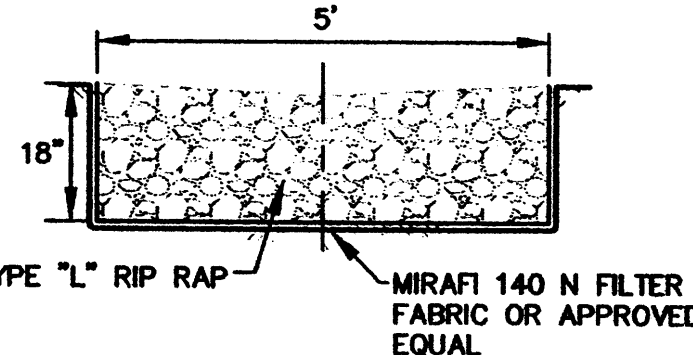
DRAINAGE STRUCTURE TABLE				
STRUCTURE	RM/TOG	INVERT	DOWNSTREAM LENGTH	SLOPE
"D" INLET 1	23.80*	18.93	98.5'	0.40%
INLINE E1	23.00	18.53	100'	0.40%
INLINE E2	23.00	18.13	100'	0.40%
INLINE E3	23.00	17.73	83.5'	0.40%
SD MH 1	23.17	17.40	16.6'	0.51%
INLINE E4	23.00	17.31	100'	0.51%
INLINE E5	23.00	16.80	100'	0.51%
INLINE E6	23.00	16.29	155'	0.51%
SD MH 4	21.80	12.96(S) 15.50(N) 13.81(W) 17.27(E)	177'	1.04%
"D" INLET 2	21.30	18.00	15'	4.86%
"D" INLET 3	23.50**	19.37	102'	0.52%
INLINE W1**	23.00	18.84	100'	0.52%
INLINE W2	23.00	18.32	100'	0.52%
INLINE W3	23.00	17.80	73'	0.52%
SD MH 2	23.27	17.42	28.6'	0.51%
INLINE W4	23.00	17.28	100'	0.51%
INLINE W5	23.00	16.77	100'	0.51%
INLINE W6	23.00	16.26	155.3'	0.51%
SD MH 3	21.90	15.46(N) 16.46(W)	270'	0.61%
"D" INLET 4	21.50	17.50	30'	3.47%
"D" INLET 5	17.80	11.30	55'	6.00%

ROOF DRAIN TABLE	
8" HDPE ROOF DRAIN #	SD INV
RD-E1	5117.77
RD-E2	5117.49
RD-E3	5117.14
RD-E4	5116.79
RD-E5	5116.44
RD-W1	5117.85
RD-W2	5117.49
RD-W3	5117.11
RD-W4	5116.76
RD-W5	5116.40

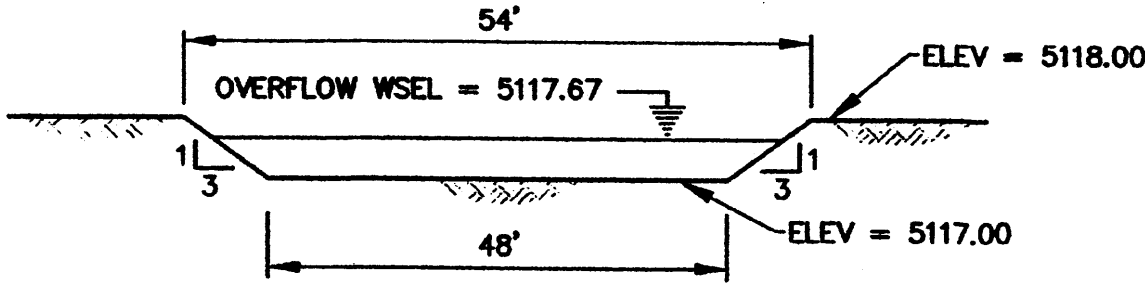
NOTE:
ALL STD DWG REFERENCES REFER TO AMERICAN PUBLIC WORKS ASSOCIATION, NEW MEXICO CHAPTER, NEW MEXICO STANDARD SPECIFICATIONS FOR PUBLIC WORKS CONSTRUCTION, 2006 EDITION.



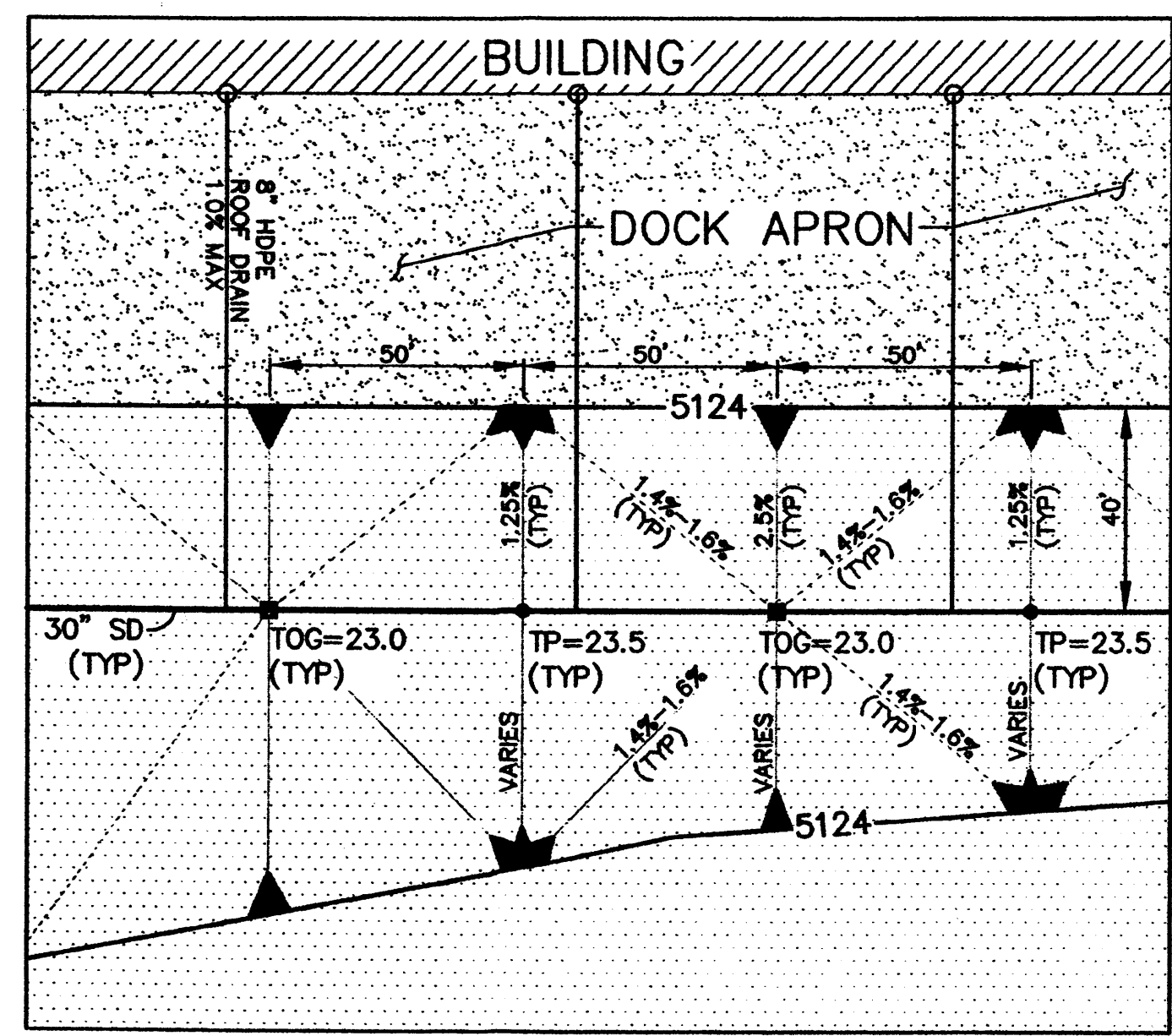
SECTION C-C
SIDEWALK OPENING DETAIL
SCALE: NTS



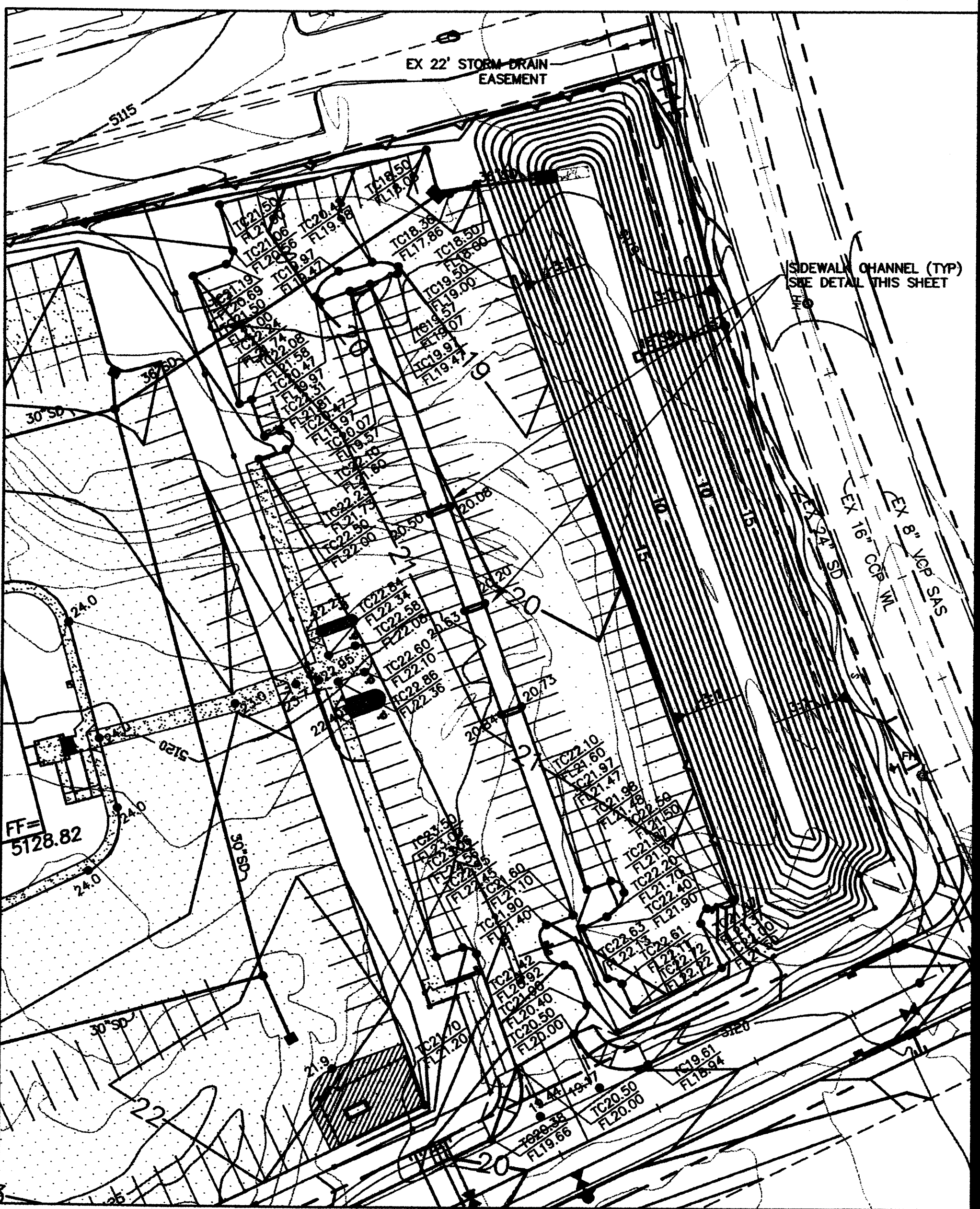
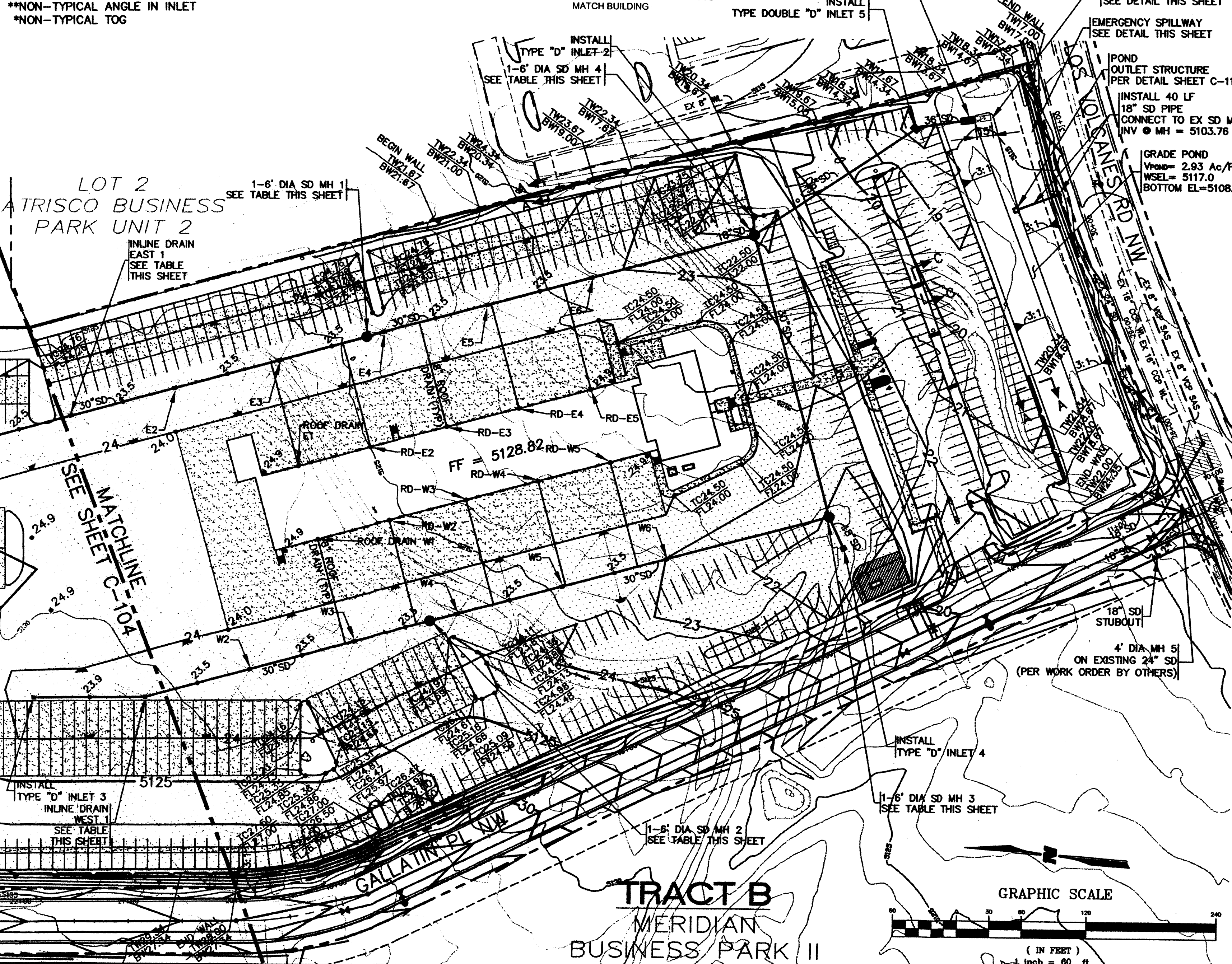
RIP RAP BLANKET DETAIL
SCALE: 1" = 2'



EMERGENCY SPILLWAY DETAIL
SCALE: NTS



PAVEMENT/INLET TYPICAL GRADING DETAIL
SCALE: 1" = 30'



STANDARD VEHICLE PARKING LOT - ENLARGED GRADING DETAIL
SCALE: 1" = 40'

CLAUDIO VIGIL ARCHITECTS

1801 Rio Grande Boulevard, N.W.
Albuquerque, New Mexico
Phone: (505) 842-1113
Fax: (505) 842-1330

OWNERSHIP OF INSTRUMENTS OF SERVICE
All design concepts, details, specifications, plans, computer files, field data, notes and other documents and instruments prepared by Ambyris P.C., D.B.A. Claudio Vigil Architects, as instruments of service shall remain the property of Ambyris P.C., Claudio Vigil Architects, P.C. Architect shall retain all common law, statutory and other reserved rights, including the copyright thereto.

CONSULTANTS
WILSON & COMPANY
4900 LANG AVE N.E.
ALBUQUERQUE, NEW MEXICO 87109
(505) 348-4000

PROFESSIONAL SEAL

CLAUDIO VIGIL
PROFESSIONAL ENGINEER

FEDEX FREIGHT ALBUQUERQUE SERVICE AND DISTRIBUTION CENTER
7601 LOS VOLCANES ROAD, N.W.
ALBUQUERQUE, NEW MEXICO

MARK	DATE	DESCRIPTION
4	4-21-08	FINAL REVISION

PROJECT NUMBER: WCI #0760004400
DRAWING FILE: 76044G002.dwg
DRAWN BY: CR
CHECK BY: KS
COPYRIGHT: WILSON & COMPANY INC.
DATE: APRIL 21, 2008

SHEET TITLE
GRADING PLAN

SHEET NUMBER
C-105



CLAUDIO VIGIL ARCHITECTS

1801 Rio Grande Boulevard, N.W.
Albuquerque, New Mexico
Phone: (505) 842-1113
Fax: (505) 842-1330

OWNERSHIP OF INSTRUMENTS OF SERVICE
All design concepts, details, specifications, plans, computer files, field data, notes and other documents and instruments prepared by Ambysis P.C., D.B.A. Claudio Vigil Architects, as instruments of service shall remain the property of Ambysis P.C., Claudio Vigil Architects, P.C. Architect shall retain all common law, statutory and other reserved rights, including the copyright thereto.

CONSULTANTS

Blank area for listing consultants.

PROFESSIONAL SEAL



FEDEX FREIGHT ALBUQUERQUE
SERVICE AND DISTRIBUTION CENTER
7601 LOS VOLCANES ROAD, N.W.
ALBUQUERQUE, NEW MEXICO

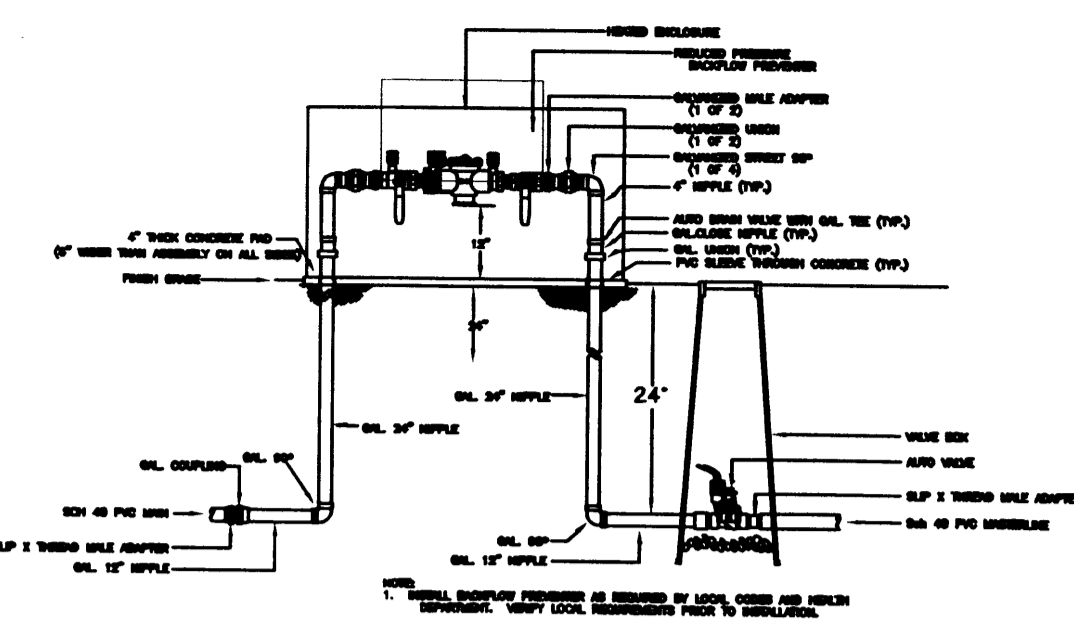
2/4/08
2/18/08
3/20/08
4/21/08
Final Revision

MARK	DATE	DESCRIPTION
-	1/18/08	-
-	12/11/07	-
-	11/20/07	-
-	10/22/07	-
-	10/1/07	-
-	9/24/07	-

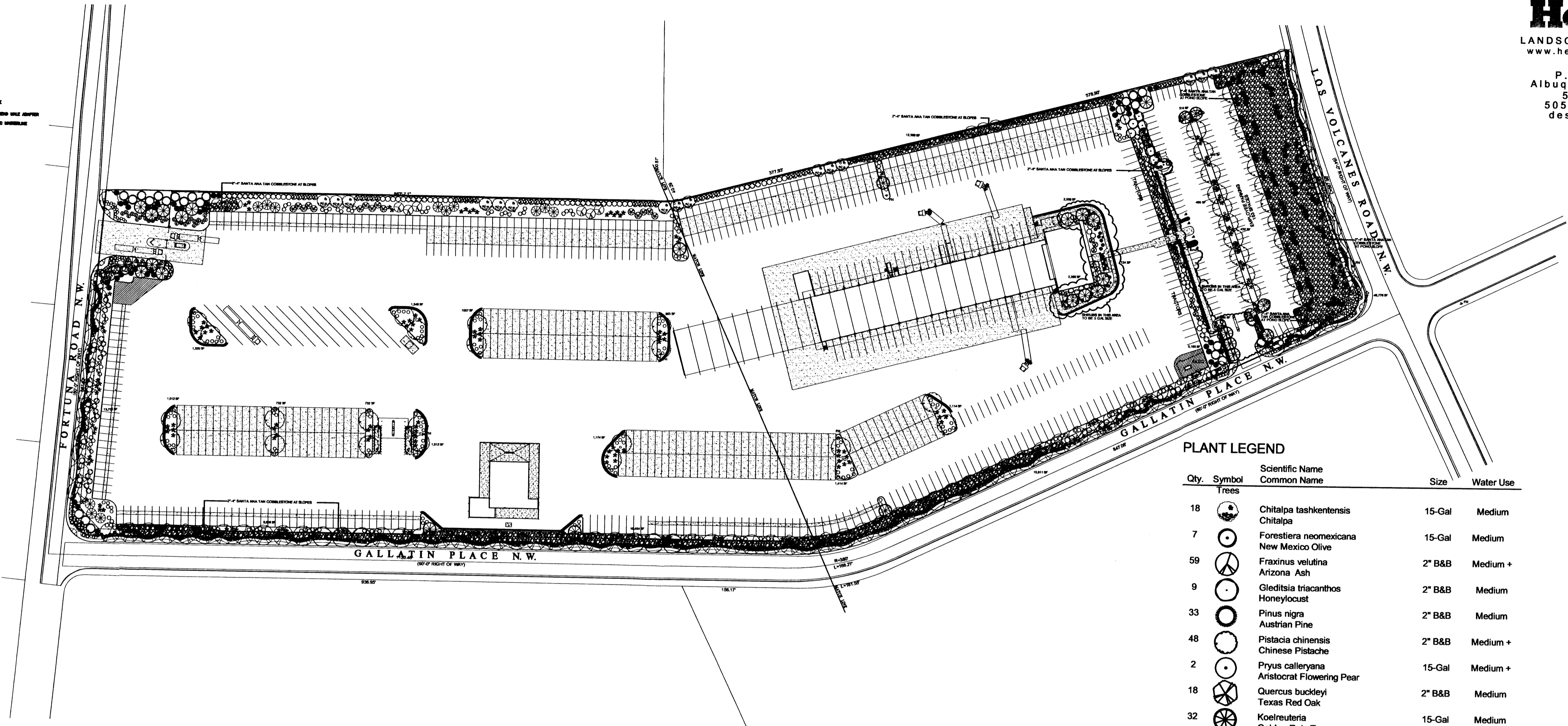
PROJECT NUMBER:	07305
DRAWING FILE:	FEDEX-ATRISCO-C-102-ESP
DRAWN BY:	JC
CHECK BY:	MS
COPYRIGHT:	CLAUDIO VIGIL ARCHITECTS 2007
DATE:	JUNE 13, 2008

SHEET TITLE
LANDSCAPE SITE PLAN

SHEET NUMBER
L-100



Mastervalue w/RPBA



SITE DATA

GROSS LOT AREA	976,759 SF
LESS BUILDINGS	42,230 SF
LESS R.O.W. LANDSCAPE	15,017 SF
NET LOT AREA	919,512 SF
REQUIRED LANDSCAPE 15% OF NET LOT AREA	137,926 SF
PROPOSED LANDSCAPE	153,881 SF
PERCENT OF NET LOT AREA	15.75 %

REQUIRED 2" CAL STREET TREES
PROVIDED AT 30' O.C. SPACING ALONG STREET 93
REQUIRED 2" CAL PARKING LOT TREES
PROVIDED AT 1 PER 10 SPACES (153 SPACES/10) 16
TOTAL REQUIRED 2" CAL TREES 109
TOTAL PROVIDED 2" CAL TREES 167

NOTE
MAINTENANCE OF LANDSCAPE AND IRRIGATION PROVIDED BY OWNER

PLANTINGS TO BE WATERED BY AUTO. DRIP IRRIGATION SYSTEM WITH REDUCED PRESSURE BACKFLOW PREVENTER (WILKINS MODEL 975) PER CITY OF ALBUQUERQUE

WATER MANAGEMENT IS THE SOLE RESPONSIBILITY OF THE PROPERTY OWNER

THIS PLAN IS TO COMPLY WITH C.O.A. LANDSCAPE AND WATER WASTE ORDINANCE PLANTING RESTRICTIONS APPROACH

IT IS THE INTENT OF THIS PLAN TO PROVIDE MIN. 75% LIVE GROUNDCOVER OF LANDSCAPE AREAS AT MATURITY

LANDSCAPE AREAS TO BE MULCHED WITH 3/4" SANTA ANA TAN GRAVEL MULCH AT 3" DEPTH OVER FILTER FABRIC

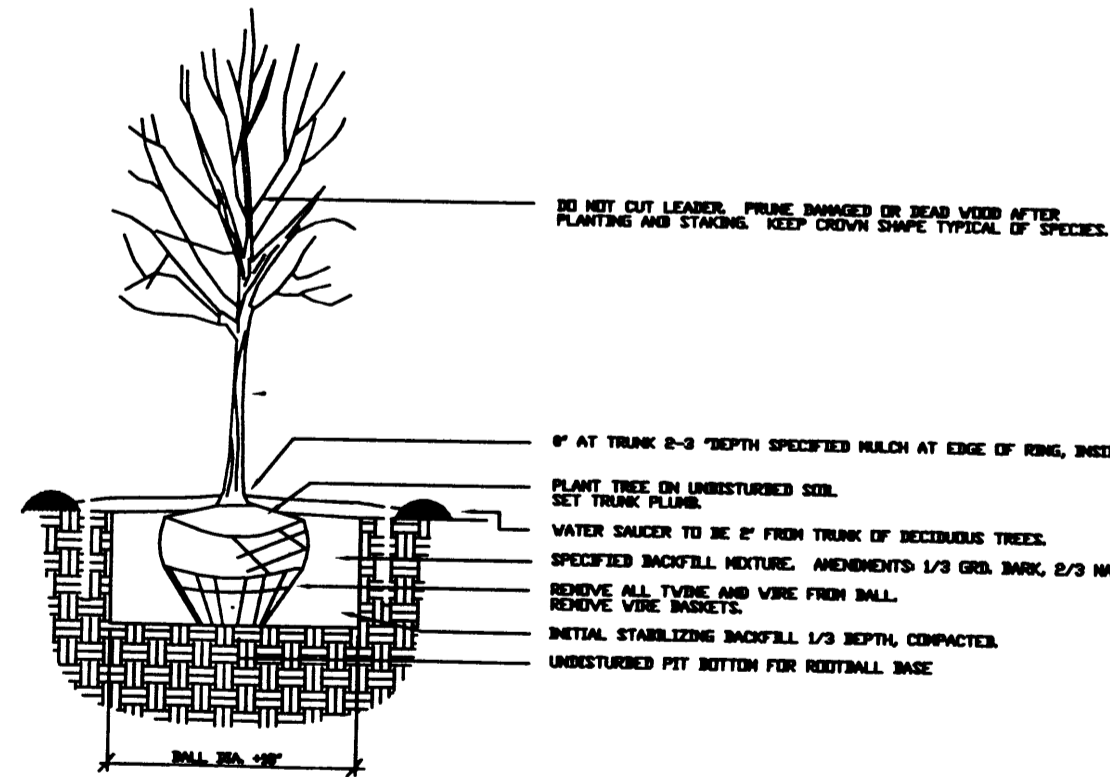
APPROVAL OF THE LANDSCAPE PLAN DOES NOT CONSTITUTE OR IMPLY COMPLIANCE WITH, OR EXEMPTION FROM, THE C.O.A. LANDSCAPE AND WATER WASTE ORDINANCE

TREES ARE NOT TO BE PLACED IN PUBLIC UTILITY EASEMENTS

NO PARKING SPACE SHALL BE MORE THAN 100' FROM A TREE
ALL PLANTERS, LANDSCAPE AREAS AND GREEN SPACES TO BE IRRIGATED PER SECTION 2.6

PLANT LEGEND

Qty.	Symbol	Scientific Name Common Name	Size	Water Use
Trees				
18	(Symbol)	Chitalpa tashkentensis Chitalpa	15-Gal	Medium
7	(Symbol)	Forestiera neomexicana New Mexico Olive	15-Gal	Medium
59	(Symbol)	Fraxinus velutina Arizona Ash	2" B&B	Medium +
9	(Symbol)	Gleditsia triacanthos Honeylocust	2" B&B	Medium
33	(Symbol)	Pinus nigra Austrian Pine	2" B&B	Medium
48	(Symbol)	Pistacia chinensis Chinese Pistache	2" B&B	Medium +
2	(Symbol)	Pryus calleryana Aristocrat Flowering Pear	15-Gal	Medium +
18	(Symbol)	Quercus buckleyi Texas Red Oak	2" B&B	Medium
32	(Symbol)	Koeleruteria Golden Rain Tree	15-Gal	Medium
15	(Symbol)	Caesalpinia Bird of Paradise	5-Gal	Low
9	(Symbol)	Chilopsis Desert Willow	5-Gal	Medium
12	(Symbol)	Vitex Chaste Tree	5-Gal	Medium
Shrubs/Groundcovers				
80	(Symbol)	Buddleia davidii Butterfly Bush	1-5-Gal	Medium
299	(Symbol)	Caryopteris clandonensis Blue Mist	1-5-Gal	Medium
92	(Symbol)	Cotoneaster pameyi Clusterberry	1-5-Gal	Low +
38	(Symbol)	Ericameria lanicifolia 'Aguirre' Turpentine Bush	1-5-Gal	Low+
232	(Symbol)	Hesperaloe parviflora Red Yucca	1-Gal	Low++
35	(Symbol)	Baccharis pilularis Dwarf Coyote Brush	1-5-Gal	Low +
93	(Symbol)	Lavandula angustifolia English Lavender	1-5-Gal	Low
118	(Symbol)	Cornus Red Twig Dogwood	1-5-Gal	Medium+
128	(Symbol)	Vauquelinia Arizona Rosewood	1-Gal	Low +
46	(Symbol)	Prunus besseyi Western Sand Cherry	1-5-Gal	Medium
58	(Symbol)	Rhus trilobata Three-leaf Sumac	1-Gal	Low+
20	(Symbol)	Rosmarinus officinalis Rosemary	1-5-Gal	Low +
171	(Symbol)	Fallugia Apache Plume	1-Gal	Low+
116	(Symbol)	Rhus Gro Low Sumac	1-Gal	Low +
Ornamental Grasses				
76	(Symbol)	Calamagrostis acutiflora Karl Foerster Grass	5-Gal	Medium
190	(Symbol)	Miscanthus sinensis 'Gracillimus' Maiden Grass	1-Gal	Medium



1
L100 Deciduous Tree



Creating Better
Up Heads
LANDSCAPE CONTRACTORS
www.headsuplandscape.com

P. O. BOX 10597
Albuquerque, NM 87184
505.898.9615
505.898.2105 (fax)
design@hulc.com



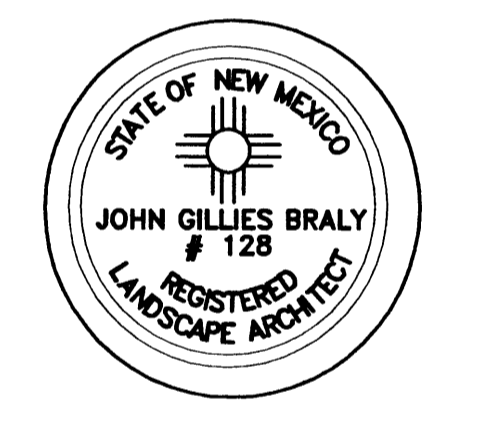
CLAUDIO VIGIL ARCHITECTS

1801 Rio Grande Boulevard, N.W.
Albuquerque, New Mexico
Phone: (505) 842-1113
Fax: (505) 842-1330

OWNERSHIP OF INSTRUMENTS OF SERVICE
All design concepts, details, specifications, plans, computer files, field data, notes and other documents and instruments prepared by Ambysis P.C., D.B.A. Claudio Vigil Architects, as instruments of service shall remain the property of Ambysis P.C., Claudio Vigil Architects, P.C. Architect shall retain all common law, statutory and other reserved rights, including the copyright thereto.

CONSULTANTS

PROFESSIONAL SEAL



FEDEX FREIGHT ALBUQUERQUE

SERVICE AND DISTRIBUTION CENTER

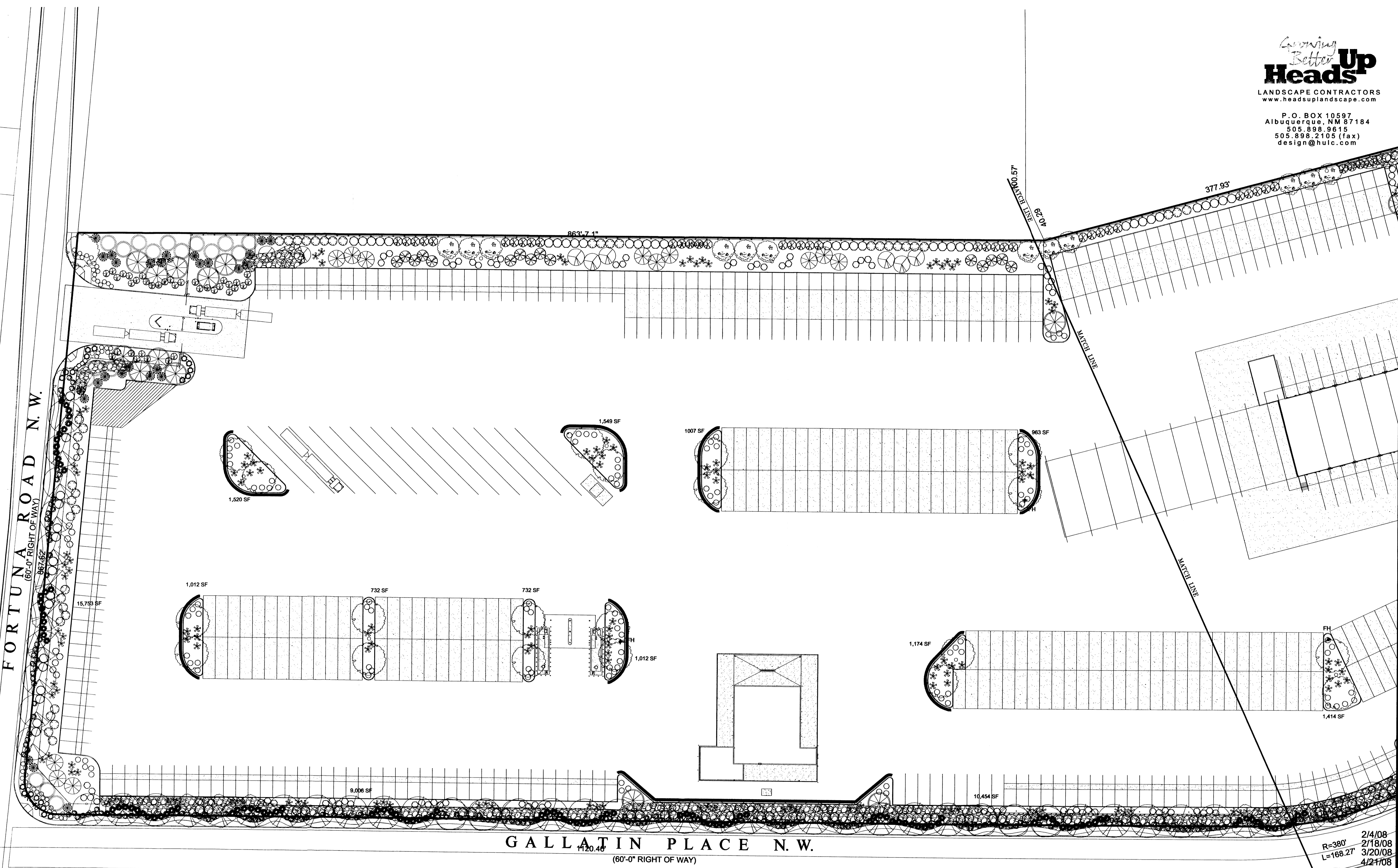
7601 LOS VOLCANES ROAD, N.W.
ALBUQUERQUE, NEW MEXICO

MARK	DATE	DESCRIPTION
-	1/18/08	-
-	12/11/07	-
-	11/20/07	-
-	10/22/07	-
-	10/1/07	-
-	9/24/07	-

PROJECT NUMBER: 07305
DRAWING FILE: FEDEX-ATRISCO-C-102-ESP
DRAWN BY: JC
CHECK BY: MS
COPYRIGHT: CLAUDIO VIGIL ARCHITECTS 2007
DATE: JUNE 13, 2008

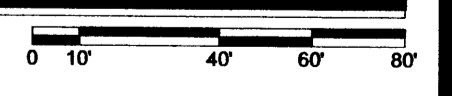
SHEET TITLE
ENLARGED PARTIAL LANDSCAPE PLAN

SHEET NUMBER
L-101



L2
SCALE: 1" = 40'-0"

ENLARGED PARTIAL LANDSCAPE PLAN



R=380'
L=168.27'
Final Revision
L=181.55'

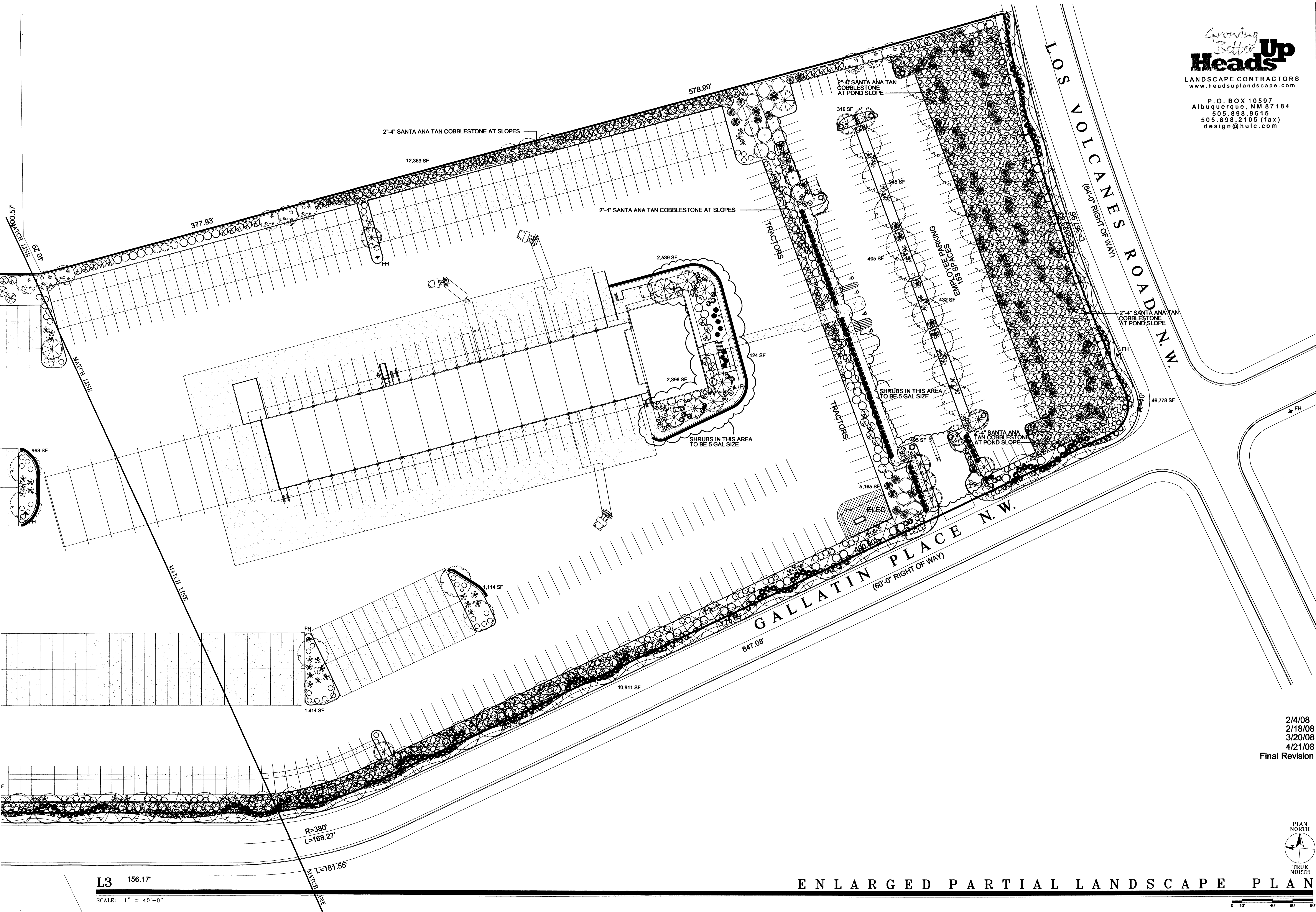
2/4/08
2/18/08
3/20/08
4/21/08

156.17'

936.95'

GALLATIN PLACE N.W.
(60'-0" RIGHT OF WAY)

FORTUNA ROAD N.W.
(60'-0" RIGHT OF WAY)



*Crowning
Better
Heads
Up*
LANDSCAPE CONTRACTORS
 www.headsuplandscape.com
 P. O. BOX 10597
 Albuquerque, NM 87184
 505.898.9615
 505.898.2105 (fax)
 design@hulc.com

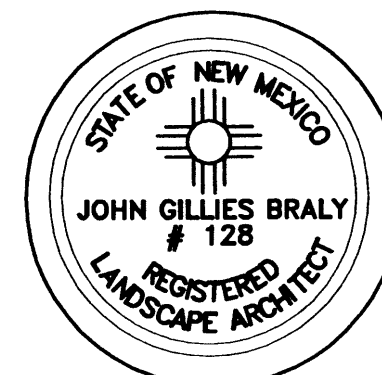

**CLAUDIO VIGIL
 ARCHITECTS**

1801 Rio Grande Boulevard, N.W.
 Albuquerque, New Mexico
 Phone: (505) 842-1113
 Fax: (505) 842-1330

OWNERSHIP OF INSTRUMENTS OF SERVICE
 All design concepts, details, specifications, plans, computer files, field data, notes and other documents and instruments prepared by Ambysis P.C., D.B.A. Claudio Vigil Architects, as instruments of service shall remain the property of Ambysis P.C., Claudio Vigil Architects P.C. Architect shall retain all common law, statutory and other reserved rights, including the copyright thereto.

CONSULTANTS

PROFESSIONAL SEAL



FedEx
 Freight

**FEDEX FREIGHT
 ALBUQUERQUE**

SERVICE AND
 DISTRIBUTION
 CENTER

7601 LOS VOLCANES ROAD, N.W.
 ALBUQUERQUE, NEW MEXICO

2/4/08
 2/18/08
 3/20/08
 4/21/08
 Final Revision

MARK	DATE	DESCRIPTION
-	1/18/08	-
-	12/11/07	-
-	11/20/07	-
-	10/22/07	-
-	10/1/07	-
-	9/24/07	-

PROJECT NUMBER: 07305
 DRAWING FILE: FEDEX-ATRISCO-C-102-ESP
 DRAWN BY: JC
 CHECK BY: MS
 COPYRIGHT: CLAUDIO VIGIL ARCHITECTS 2007
 DATE: JUNE 13, 2008

SHEET TITLE
**ENLARGED
 PARTIAL
 LANDSCAPE PLAN**

SHEET NUMBER
L-102

ENLARGED PARTIAL LANDSCAPE PLAN

