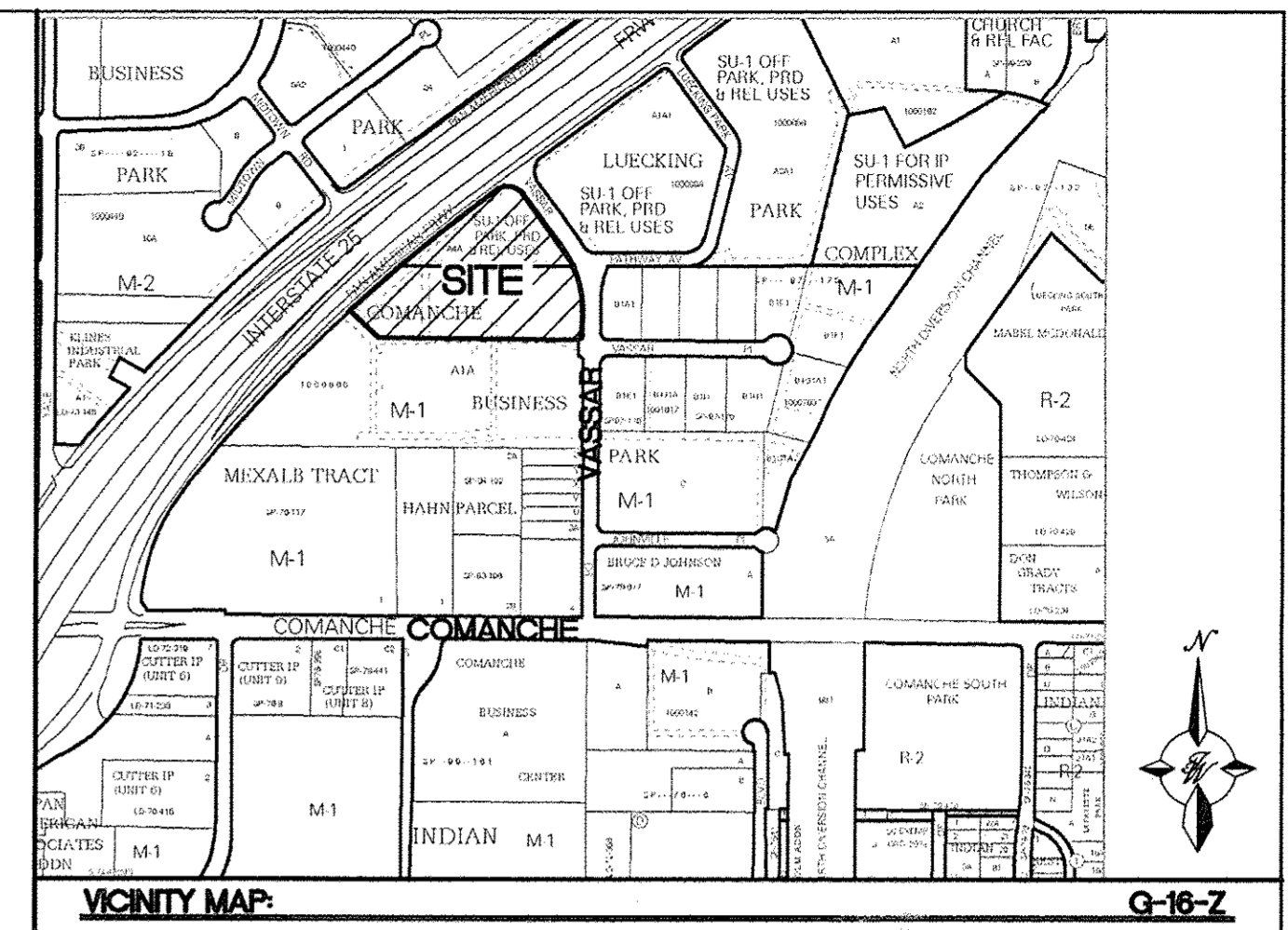


- SITE LEGEND**
- 1 ACCESSIBLE PARKING SPACE TYPICAL, SEE DETAIL SHEET FOR ACCESSIBLE PARKING SPACE SIZE, SIGN AND SYMBOL. (\*VAN-INDICATES VAN ACCESSIBLE SPACE).
  - 2 UNIDIRECTIONAL HC RAMP (SEE DETAIL SHEET C7)
  - 3 6' EXISTING SIDEWALK
  - 4 6' PEDESTRIAN CROSSWALK (SEE DETAIL SHEET C8)
  - 5 6' PEDESTRIAN SIDEWALK
  - 6 ZERO CURB (ADA PARKING AREA)
  - 7 PARKING LOT LIGHTING.
  - 8 4 TO 8 FT. RETAINING WALL (SEE DETAIL SHEET C6)
  - 9 VALLEY GUTTER (PER COA STD DWG 2420)
  - 10 TYPE "A" CURB AND GUTTER (SEE DETAIL SHEET C8)
  - 11 DOUBLE DUMPSTER (SEE DETAILS SHEET C7)
  - 12 STOP SIGN
  - 13 MOTORCYCLE PARKING
  - 14 MOTORCYCLE PARKING SIGN (SEE DETAIL SHEET C7)
  - 15 5 SPACE BIKE RACK (SEE DETAIL SHEET C7)
  - 16 EXISTING ADA RAMP
  - 17 EXISTING BILLBOARD
  - 18 WHEEL STOP (SEE DETAIL SHEET C7)
  - 19 MONUMENT SIGN
  - 20 1 FT. CURB CUT (SEE LANDSCAPE ISLAND WATER HARVESTING DETAIL SHT C6)
  - 21 LIMITS OF OFFSITE CONSTRUCTION (SEE DETAIL SHEET C9 FOR PAVING PLAN.



**LEGAL DESCRIPTION:**  
 LOTS 2-A AND 2-B, SRCC ALBUQUERQUE CARPENTERS TRAINING CENTER

**NOTES:**  
 1. SEE PAVING PLAN SHEET C9

**SITE DATA**

LOT 2-B	PROPOSED USAGE:	ENTERTAINMENT (BOWLING LANES, GAMES, DINING)
LOT AREA:	5.03 ACRE	
BUILDING AREA:	49,810 SF	
PARKING REQUIRED:	239 SPACES	
PARKING PROVIDED:	350 SPACES	
HC PARKING REQUIRED:	12 SPACES	
HC PARKING PROVIDED:	12 SPACES (2 SPACES VAN ACCESSIBLE)	
MC PARKING REQUIRED:	6 SPACES	
MC PARKING PROVIDED:	6 SPACES	
BICYCLE PARKING REQUIRED:	12 SPACES	
BICYCLE PARKING PROVIDED:	15 SPACES	

LOT 2-A	PROPOSED USAGE:	RESTAURANT
LOT AREA:	1.79	
BUILDING AREA:	6,500 SQ. FT.	
PARKING REQUIRED:	33 SPACES	
PARKING PROVIDED:	126 SPACES	
HC PARKING REQUIRED:	4 SPACES	
HC PARKING PROVIDED:	4 SPACES (1 SPACE VAN ACCESSIBLE)	
MC PARKING REQUIRED:	4 SPACES	
MC PARKING PROVIDED:	4 SPACES	
BICYCLE PARKING REQUIRED:	2 SPACES	
BICYCLE PARKING PROVIDED:	5 SPACES	

**PROJECT NUMBER:** \_\_\_\_\_

**APPLICATION NUMBER:** \_\_\_\_\_

This plan is consistent with the specific Site Development Plan approved by the Environmental Planning Commission (EPC), dated \_\_\_\_\_ and the Findings and Conditions in the Official Notification of Decision are satisfied.

Is an Infrastructure List required? ( ) Yes ( ) No If Yes, then a set of approved DRG plans with a work order is required for any construction within Public Right-of-Way or for construction of public improvements.

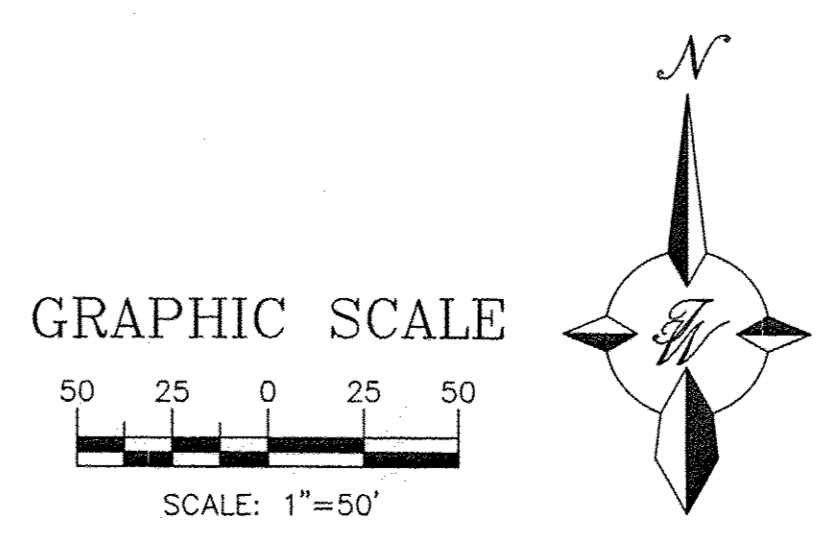
**DRB SITE DEVELOPMENT PLAN SIGNOFF APPROVAL:**

Traffic Engineer, Transportation Division	_____	Date
Water Utility Development	_____	Date
Parks & Recreation Department	_____	Date
City Engineer	_____	Date
* Environmental Health Department (conditional)	_____	Date
Solid Waste Management	<i>[Signature]</i>	3-26-15 Date
DRB Chairperson, Planning Department	_____	Date

\* Environmental Health, if necessary

- LEGEND**
- |                       |                                    |
|-----------------------|------------------------------------|
| — CURB & GUTTER       | --- LIMITS OF OFFSITE CONSTRUCTION |
| --- BOUNDARY LINE     | --- FUTURE CURB & GUTTER           |
| --- EASEMENT          | --- EXISTING CURB & GUTTER         |
| --- CENTERLINE        | --- EXISTING BOUNDARY LINE         |
| --- RIGHT-OF-WAY      | --- EXISTING SIDEWALK              |
| --- BUILDING          | --- EXISTING LANE                  |
| --- SIDEWALK          | --- EXISTING STRIPING              |
| --- RETAINING WALL    |                                    |
| ☀ STREET LIGHTS       |                                    |
| --- LANE              |                                    |
| --- STRIPING          |                                    |
| --- PROPOSED EASEMENT |                                    |

- INDEX TO DRAWINGS**
- C1. SITE PLAN FOR BUILDING PERMIT
  - C2. LANDSCAPING PLAN
  - C3. LANDSCAPING PLAN
  - C4. LANDSCAPING PLAN
  - C5. GRADING AND DRAINAGE PLAN
  - C6. MASTER UTILITY PLAN
  - C7. BUILDING ELEVATIONS
  - C8. BUILDING ELEVATIONS
  - C9. BUILDING MATERIALS & COLORS
  - C10. DETAIL SHEET
  - C11. DETAIL SHEET



ENGINEER'S SEAL	<b>MAIN EVENT</b>	DRAWN BY
	PAN AM FREEWAY AND VASSAR AV.	BJF
RONALD R. BOHANNAN P.E. #7868	<b>SITE PLAN FOR BUILDING PERMIT</b>	DATE
		03/19/15
		2015015_SPB
		SHEET #
		C1
		JOB #
		2015015

*original Solid Waste*