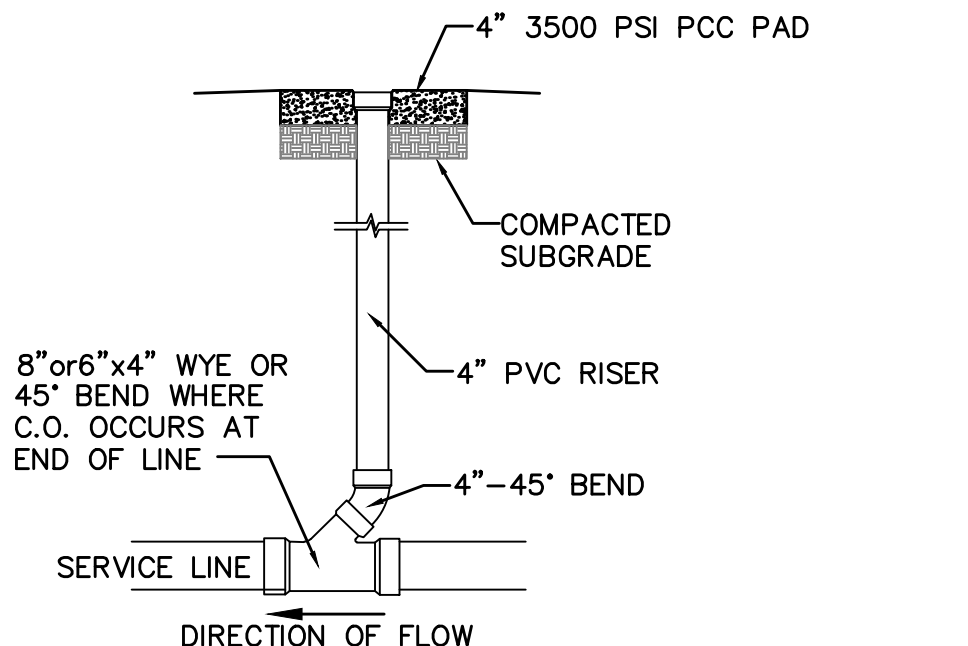
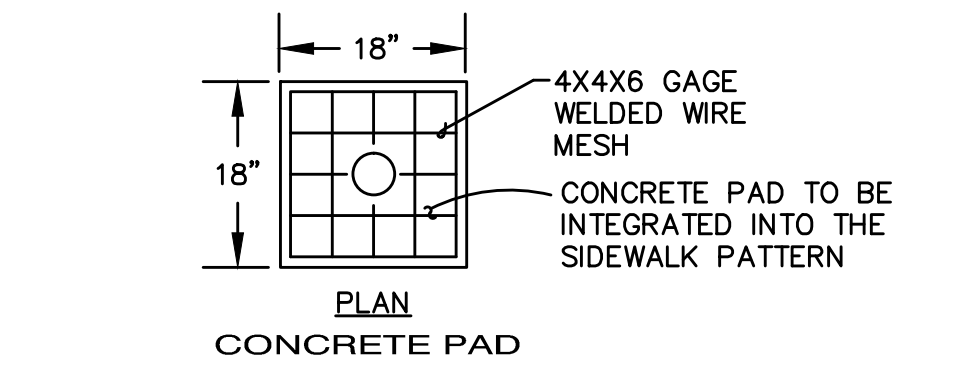


1. ALL MECHANICAL JOINTS SHALL BE RESTRAINED AT THE FITTING.
2. THE CONTRACTOR SHALL PROVIDE A MINIMUM PIPE LENGTH OF 20 LF FROM ALL MECHANICAL JOINTS. ALL PIPE JOINTS WITHIN 20 LF OF A MECHANICAL JOINT SHALL BE RESTRAINED AT THE CONTRACTOR'S EXPENSE.
3. THE CONTRACTOR SHALL RESTRAIN ALL PIPE JOINTS IN THE SPECIFIED DISTANCE LISTED IN THE KEYED NOTES.
4. THE CONTRACTOR SHALL RESTRAIN ALL FIRE HYDRANT JOINTS FROM THE TEE ON THE MAIN TO THE FIRE HYDRANT FLANGE.

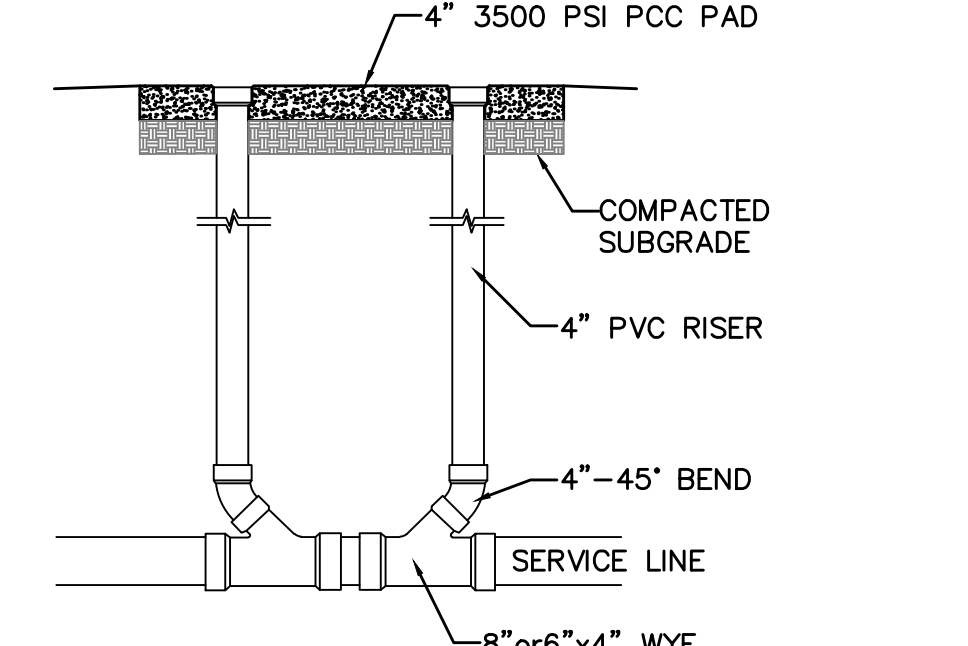
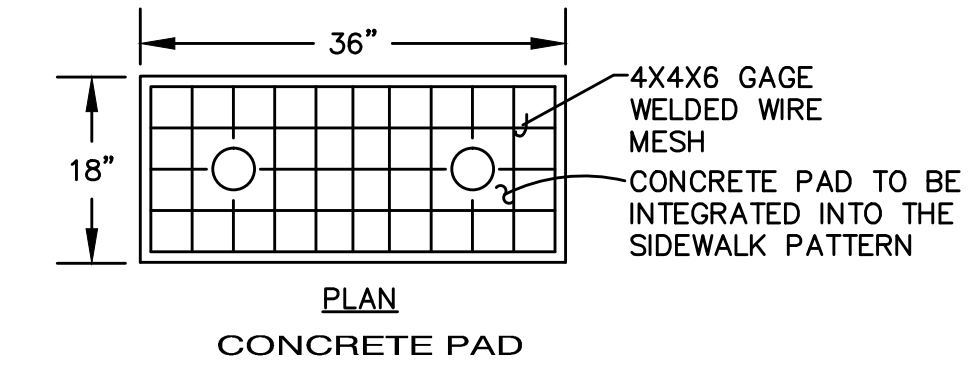
RESTRAINED JOINT CRITERIA FOR WATERLINE FITTINGS

- DEPTH OF BURY: 3.0 FT. MINIMUM
- 1.50 FACTOR OF SAFETY:
- MATERIAL: PVC
- SOIL TYPE: GM/SM - SILTY GRAVELS AND SILTY SANDS, GRAVEL-SAND-SILT MIXTURES.
- TEST PRESSURE: 150 PSI
- TRENCH TYPE 4: PIPE BEDDED IN SAND, GRAVEL, OR CRUSHED STONE TO DEPTH OF 1/8 PIPE DIAMETER, 4 INCH MINIMUM; BACKFILL COMPACTED TO TOP OF PIPE.

DIFFERENT CRITERIA, E.G., GREATER DEPTH OF BURY, ETC., WILL REQUIRE DIFFERENT RESTRAINED LENGTHS. THESE MUST BE CALCULATED BY A QUALIFIED PROFESSIONAL ENGINEER AND APPROVED BY ABCWUA.



SINGLE CLEANOUT DETAIL
SCALE: N.T.S.



DOUBLE CLEANOUT DETAIL
SCALE: N.T.S.

GENERAL NOTES

1. EXISTING UTILITY LINES ARE SHOWN IN AN APPROXIMATE MANNER ONLY AND MAY BE INCOMPLETE OR OBSOLETE. SUCH LINES MAY OR MAY NOT EXIST WHERE SHOWN OR NOT SHOWN. ALL UTILITIES SHOULD BE FIELD VERIFIED AND LOCATED BY THE CONTRACTOR PRIOR TO COMMENCEMENT OF ANY CONSTRUCTION. THE CONTRACTOR IS FULLY RESPONSIBLE FOR ANY AND ALL DAMAGE CAUSED BY ITS FAILURE TO LOCATE, IDENTIFY AND PRESERVE ANY AND ALL EXISTING UTILITIES, PIPELINES, AND UNDERGROUND UTILITY LINES.
2. CONTRACTOR SHALL NOT USE VIBRATORY COMPACTION EQUIPMENT OR HEAVY VEHICLES OVER EXISTING UTILITIES.
3. SITE STORM DRAIN, ELECTRIC LINES & TRANSFORMERS AND GAS LINES ARE SHOWN FOR GENERAL INFORMATION ONLY TO PROVIDE AN OVERVIEW OF SITE UTILITIES AND POTENTIAL CONFLICTS. SEE MECHANICAL PLANS FOR GAS LINE SIZING. SEE 06-101 FOR STORM DRAIN DESIGN.
4. ALL WATER FITTINGS SHALL HAVE JOINT RESTRAINTS (LT). SEE RESTRAINED JOINT CRITERIA NOTES THIS SHEET. (LT) LENGTH SHOWN ON KEYED NOTES.

KEYED NOTES

- WATER KEYED NOTES**
1. REMOVE AND RELOCATE EXISTING FIRE HYDRANT. PER ABCWUA STD DWG. 2340. REMOVE AND DISPOSE EXISTING 6" WL. REMOVE AND RELOCATE EXISTING GATE VALVE. CAP 6" BRANCH OF EXISTING TEE.
 2. ABCWUA SHALL CLOSE CORP STOPS AND CAP WATER SERVICE LINES. CONTRACTOR SHALL REMOVE DISPOSE EXISTING SERVICE LINES TO NEW CONNECTION POINT. REMOVE AND RELOCATE EXISTING METER SETTINGS AND BOXES TO THE NORTH. NEW WATER SERVICE TAPS PER ABCWUA STD DWGS. 2362 & 2363.
 3. INSTALL:
8"x6" TEE
RELOCATED GATE VALVE AND BOX. (LT=46')
7 LF OF 6" WATERLINE.
RELOCATED FIRE HYDRANT. (LT=46')
BF ELEV=5297.6
 4. EXISTING VALVE TO BE REMOVED.
 5. EXISTING METER SETTING AND BOX. MODIFY TO 3" METER SETTING IF NECESSARY.
 6. 3/4" WATER SERVICE
 7. IRRIGATION STUB.
 8. NEW FIRE HYDRANT INSTALLED ON EXISTING FIRE LINE PER ABCWUA STD DWG 2340.
 9. NEW 2" WATER SERVICE TO WALGREENS.
 10. NEW IRRIGATION LINE TO WALGREENS, MATCH EXISTING.

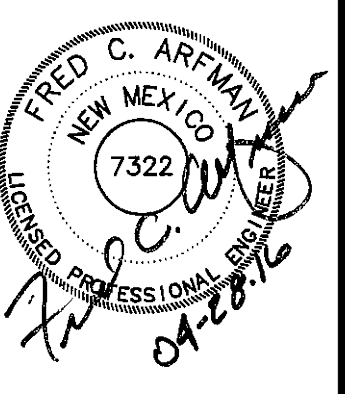
- SEWER**
20. 6" SANITARY SEWER SERVICE LINE AT 2% MIN. SLOPE.
 21. DOUBLE CLEANOUT.
 22. SINGLE CLEANOUT.
 23. 6" - WYE/TEE.
 24. 6" - 45° BEND.
 25. 6" - 22 1/2° & 11 1/2° BENDS .
 26. 8" x 6" WYE
 27. CONNECTION TO EXISTING SEWER MAIN.

LEGEND

- SAS SINGLE CLEANOUT
- SAS DOUBLE CLEANOUT
- ⊕ GATE VALVE W/ BOX
- ⊙ FIRE HYDRANT
- PROPOSED STORM DRAIN
- WL— EXISTING WATERLINE
- SAS— EXISTING SEWER LINE

UTILITY PLAN

ISAACSON & ARFMAN, P.A.
Consulting Engineering Associates
128 Monroe Street N.E.
Albuquerque, New Mexico 87108
Ph. 505-268-8828 www.iacivil.com
2152 CU-101.dwg Apr 27, 2016



Advance Auto Parts
TRACT 1, PARADISE PLAZA
10800 UNSER BLVD. NW
ALBUQUERQUE, NM 87117
STORE # _____

REV	DATE	DESCRIPTION

DATE: 4-26-16
PROJECT # / SIZE: 66ARCHITECT, LLC
DRAWN BY: Clint Wilsey, Architect
CHECK BY: Clint Wilsey, Architect
VERSION 04-83x83
ALL REPORTS, PLANS, SPECIFICATIONS, FIELD DATA, NOTES AND OTHER DOCUMENTS, INCLUDING ALL DOCUMENTS ON ELECTRONIC MEDIA, PREPARED BY THE DESIGN PROFESSIONAL AS INSTRUMENTS OF SERVICE SHALL REMAIN THE PROPERTY OF THE DESIGN PROFESSIONAL. DISSEMINATION MAY NOT BE MADE WITHOUT THE WRITTEN CONSENT OF THE DESIGN PROFESSIONAL. ALL COMMON LAW RIGHTS OF COPYRIGHT AND OTHER RIGHTS ARE HEREBY EXPRESSLY RESERVED.

66ARCHITECT, LLC
Clint Wilsey, Architect
clint.wilsey@gmail.com
505 280-0043

CU-101

