

**Clark Consulting Engineers**  
19 Ryan Road  
Edgewood, New Mexico 87015  
Tel: (505) 281-2444  
Fax: (505) 281-2444

LOT 2-A-2, BLOCK 2, SUNPORT PARK  
ABUQUERQUE, BERNALILLO COUNTY, NEW MEXICO

DATE: REVISION  
8/3/16

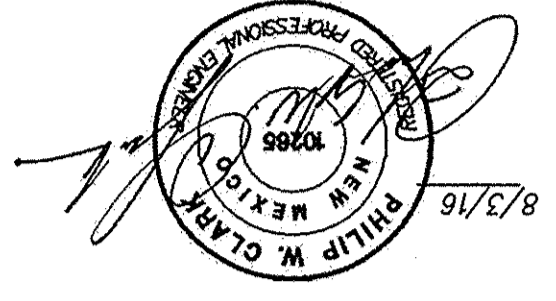
SUNPORT PARK HOSPITALITY / KUMAR

**SITE UTILITY PLAN**

CHECKED BY: PWC  
DRAWN BY: CCE  
DATE: 3/23/16  
JOB #: YOGASH  
FILE #: UTIL

SHEET C 103

EXISTING UTILITIES SHOWN HEREON, INCLUDING UNHARDENED UTILITIES SHALL BE VERIFIED BY THE CONTRACTOR FOR EXACT LOCATION AND DEPTH PRIOR TO EXCAVATION. SHOULD A CONFLICT EXIST, THE OWNER/ AND OR PROJECT ENGINEER SHALL BE IMMEDIATELY NOTIFIED.  
7-WORKING DAYS PRIOR TO CONSTRUCTION, THE CONTRACTOR SHALL CONTACT NEW MEXICO ONE-CALL SYSTEM, 280-1990, FOR LOCATION OF EXISTING UTILITIES.



- AECWUA / CITY CUSTOMER SERVICES, 289-3305.
- PUBLIC SERV. CO. OF NM, F. Vigil, 241-4434  
fernando.vigil@psnm.com
- CENTURY LINK, A. CHACON, 767-7442  
Ashlie.Chacon@centurylink.com
- New Mexico Gas Company, J. Estvanko, 697-3617  
jeffestvanko@nmgco.com
- COMCAST CABLE, Digital Cable  
Mike Mortus, 271-5644  
Mike\_mortus@cable.comcast.com

**UTILITY CONTACTS:**

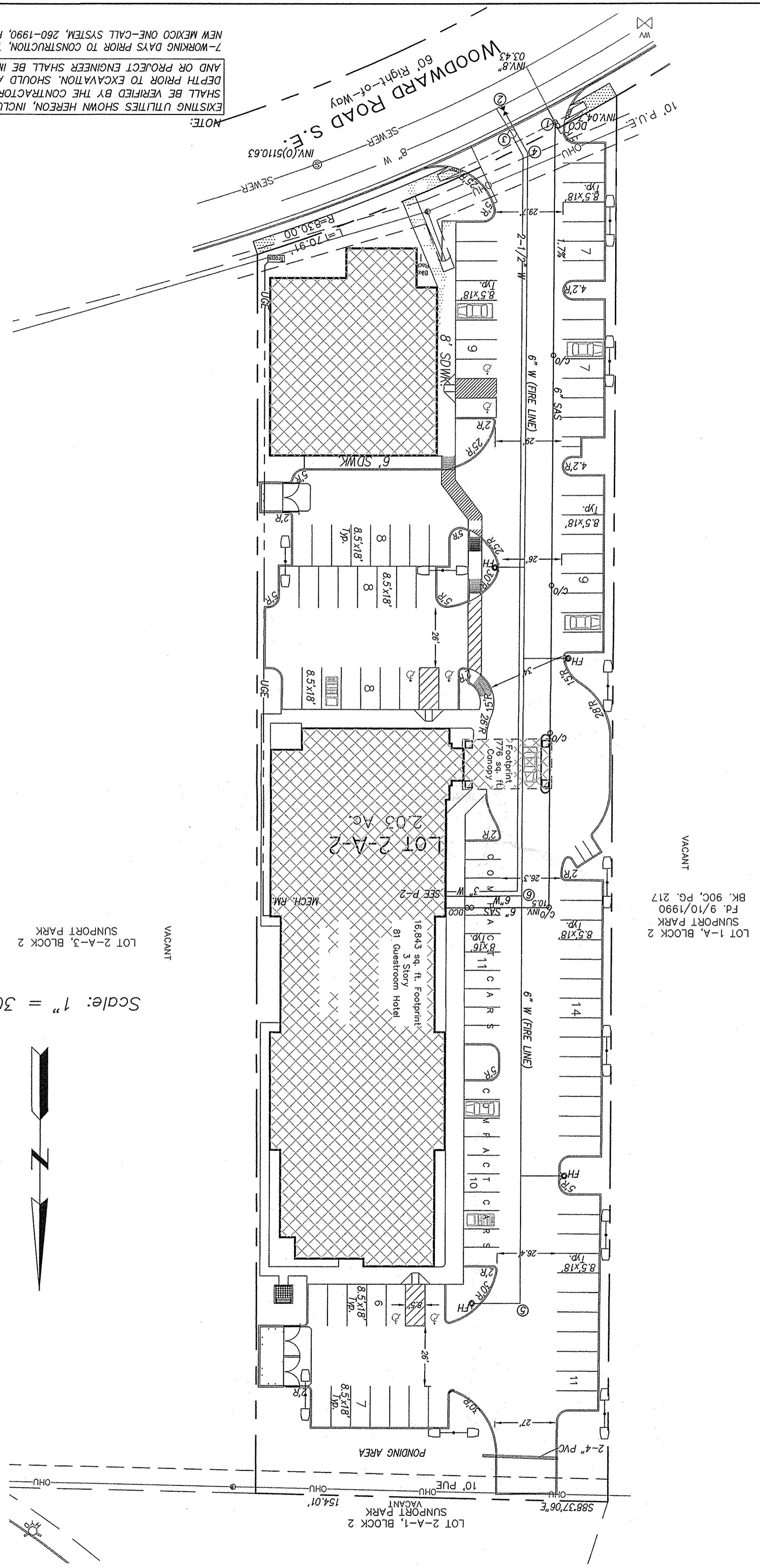
1. 6" SEWER SERVICE CONNECTION TO EXISTING SEWER SERVICE STRIBUT PER COA STD. DWG. 2125.
2. 6" FIRE WATER LINE CONNECTION PER AECWUA PERSONNEL, SEE NOTE 3.
3. MAKE NON-PRESSURIZED CONNECTION, INSTALL 8"x6" TEE PER STD DWGS. 2301, W/6" GATE VLV/BOX PER 2326. REPLACE PAVEMENT PER COA DWG 2465. ONE(1) 2" WATER METER/BOX AND SERVICE LINE PER COA STD. DWGS 2363, 2367.
4. INSTALL 22-1/4" BEND, 6" PVC, C900.
5. 4" BURY FIRE HYDRANT PER COA DWG. 2340, WITH 6" GATE VLV/BOX, TYPICAL. 4-LOCATIONS. RESTRAIN ENTIRE LEG.
6. INSTALL 6" X 6" TEE, C900 PVC PIPE.

**KEYED NOTES**

1. ALL WORK WITHIN THE RIGHT-OF-WAY SHALL BE CONSTRUCTED IN ACCORDANCE WITH THE CITY OF ABUQUERQUE STANDARD SPECS. FOR PUBLIC WORKS CONSTRUCTION, 1986 EDITION W/ 9 UPDATES.
2. AN EXCAVATION/CONSTRUCTION PERMIT IS REQUIRED BEFORE BEGINNING ANY WORK WITHIN CITY R.O.W.
3. ALL R.O.W. WATER LINE CONNECTIONS, AND METER INSTALLATION SHALL BE MADE BY AECWUA PERSONNEL. CONTRACTOR SHALL COORDINATE WITH PINDO YARDS, 857-8200 & CUSTOMER SERVICES, 289-3305.
4. ALL WORK ON THIS PROJECT SHALL BE PERFORMED IN ACCORDANCE WITH APPLICABLE FEDERAL, STATE AND LOCAL LAWS, AND REGULATIONS CONCERNING CONSTRUCTION SAFETY AND HEALTH.
5. IT IS THE CONTRACTOR'S RESPONSIBILITY TO PROTECT AND MAINTAIN SERVICE OF ALL EXISTING UTILITIES.
6. CONTRACTOR SHALL ENSURE THAT NO SILTS/SEDIMENT OR SILT ENTER THE RIGHT-OF-WAYS DURING CONSTRUCTION.
7. GAS LINE AND METER, SIZE AND LOCATION TO BE DETERMINED BY NM GAS COMPANY.
8. THE 6" FIRE LINE IS PRIVATE. ALL FIRE HYDRANTS SHALL BE PAINTED ORANGE. CONSTRUCTION SHALL BE PERMITTED BY NMA-WORK ORDER. CONTRACTOR SHALL CONTACT CONSTR. DIVISION, 4TH FLR. PLAZA DEL SOL. PRESENT SITE UTILITIES PLAN. CONTACT JEANNE WOLFENBARGER AT 924-3924.

**NOTES**

Scale: 1" = 30'



- LEGEND**
- ☆ EXIST. LIGHT POLE
  - o pp EXIST. POWER POLE
  - OHU EXIST. OVERHEAD UTILITY LINE
  - ANCHOR
  - EXISTING SEWER MANHOLE
  - WATER METER (EXIST)
  - WATER VALVE (EXIST)
  - EXIST. FIRE HYDRANT
  - EXIST. WATER LINE
  - SAS EXIST. SANITARY SEWER
  - TC OR BC TOP OF CURB
  - FL FLOWLINE
  - EXIST. CURB & GUTTER
  - NEW P.C.C. CONCRETE
  - NEW P.C.C. HEADER CURB
  - NEW WATER LINE
  - SAS NEW SANITARY SEWER
  - MM NEW SINGLE WATER SERVICE
  - NEW GATE VALVE
  - MS WATER SERVICE
  - SS SANITARY SEWER SERVICE
  - NEW 2-WAY SEWER CLEAN OUT
  - NEW LIGHT POLE