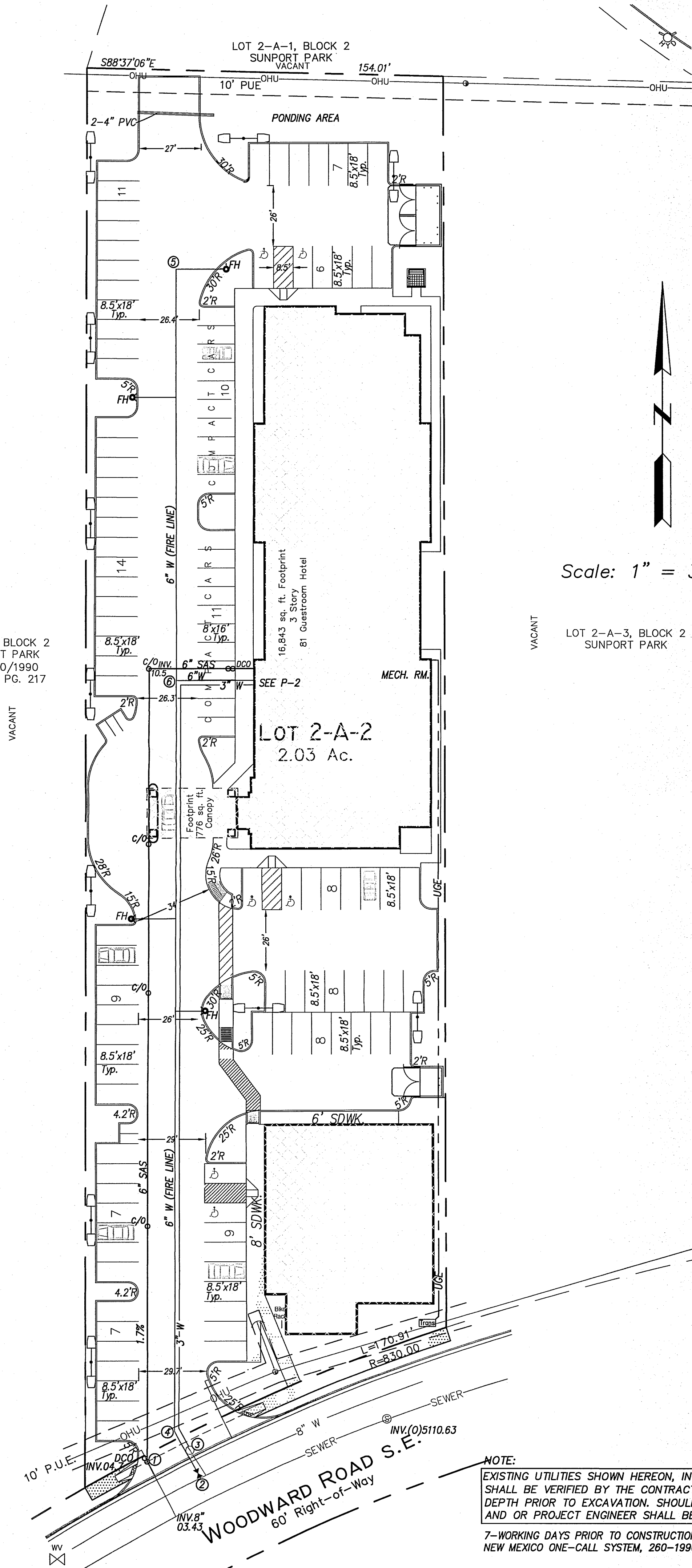


LEGEND

☆	EXIST. LIGHT POLE
○ PP	EXIST. POWER POLE
— OHU —	EXIST. OVERHEAD UTILITY LINE
⊙	= ANCHOR
⊙	= EXISTING SEWER MANHOLE
⊙	= WATER METER (EXIST.)
⊙	= WATER VALVE (EXIST.)
⊙	= EXIST. FIRE HYDRANT
— W —	EXIST. WATER LINE
— SAS —	EXIST. SANITARY SEWER
TC OR BC FL	TOP OF CURB FLOWLINE
—	EXIST. CURB & GUTTER
—	NEW P.C.C. HEADER CURB
—	NEW P.C.C. CONCRETE
— W —	NEW WATER LINE
— SAS —	NEW SANITARY SEWER
WM	NEW SINGLE WATER SERVICE
⊙	NEW GATE VALVE
— WS —	WATER SERVICE
SS	SANITARY SEWER SERVICE
⊙ DCO	NEW 2-WAY SEWER CLEAN OUT
⊙	NEW LIGHT POLE

LOT 1-A, BLOCK 2
SUNPORT PARK
Fd. 9/10/1990
BK. 90C, PG. 217



NOTES

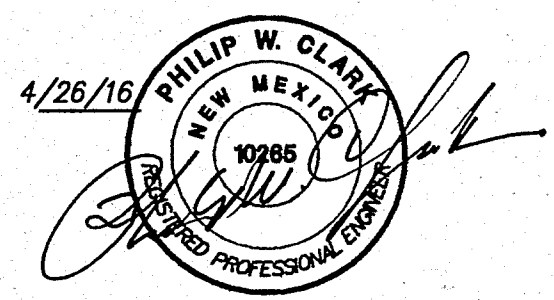
- ALL WORK WITHIN THE RIGHT-OF-WAY SHALL BE CONSTRUCTED IN ACCORDANCE WITH THE CITY OF ALBUQUERQUE STANDARD SPECS. FOR PUBLIC WORKS CONSTRUCTION, 1986 EDITION W/ 9 UPDATES.
- AN EXCAVATION/CONSTRUCTION PERMIT IS REQUIRED BEFORE BEGINNING ANY WORK WITHIN CITY R.O.W.
- ALL R.O.W. WATER LINE CONNECTIONS, AND METER INSTALLATION SHALL BE MADE BY ABCWUA / CITY PERSONNEL. CONTRACTOR SHALL COORDINATE WITH PINO YARDS, 857-8200 & CUSTOMER SERVICES, 289-3305.
- ALL WORK ON THIS PROJECT SHALL BE PERFORMED IN ACCORDANCE WITH APPLICABLE FEDERAL, STATE AND LOCAL LAWS, RULES, AND REGULATIONS CONCERNING CONSTRUCTION SAFETY AND HEALTH.
- IT IS THE CONTRACTOR'S RESPONSIBILITY TO PROTECT AND MAINTAIN SERVICE OF ALL EXISTING UTILITIES.
- CONTRACTOR SHALL ENSURE THAT NO SITE SOILS/SEDIMENT OR SILT ENTER THE RIGHT-OF-WAYS DURING CONSTRUCTION.
- GAS LINE AND METER, SIZE AND LOCATION TO BE DETERMINED BY NM GAS COMPANY.

KEYED NOTES

- 6" SEWER SERVICE CONNECTION TO EXISTING SEWER SERVICE STUBOUT PER COA STD. DWG. 2125.
- 6" FIRE WATER LINE CONNECTION PER COA PERSONNEL, SEE NOTE 3. MAKE NON-PRESSURIZED CONNECTION. INSTALL 8"x6" TEE PER STD DWGS. 2301, W/6" GATE VLV/BOX PER 2326. REPLACE PAVEMENT PER COA DWG 2465.
- ONE(1) 2-1/2" WATER METER/BOX AND SERVICE LINE PER COA STD. DWGS 2363, 2367.
- INSTALL 22-1/4" BEND, 6" PVC, C900.
- 4' BURY FIRE HYDRANT PER COA DWG. 2340, WITH 6" GATE VLV/BOX, TYPICAL @ 4-LOCATIONS. RESTRAIN ENTIRE LEG.
- INSTALL 6" X 6" TEE, C900 PVC PIPE.

UTILITY CONTACTS:

- ABCWUA / CITY CUSTOMER SERVICES, 289-3305.
- PUBLIC SERV. CO. OF NM, F. Vigil, 241-4434
fernando.vigil@pnm.com
- CENTURY LINK, A. CHACON, 767-7442
Ashlie.Chacon@centurylink.com
- New Mexico Gas Company, J. Estvanko, 697-3617
Jeff.Estvanko@NMGCO.com
- COMCAST CABLE, Digital Cable
Mike Mortus, 271-3644
Mike_mortus@cable.comcast.com



NOTE:
EXISTING UTILITIES SHOWN HEREON, INCLUDING UNCHARTED UTILITIES SHALL BE VERIFIED BY THE CONTRACTOR FOR EXACT LOCATION AND DEPTH PRIOR TO EXCAVATION. SHOULD A CONFLICT EXIST, THE OWNER/ AND OR PROJECT ENGINEER SHALL BE IMMEDIATELY NOTIFIED.

7-WORKING DAYS PRIOR TO CONSTRUCTION, THE CONTRACTOR SHALL CONTACT NEW MEXICO ONE-CALL SYSTEM, 260-1990, FOR LOCATION OF EXISTING UTILITIES.

Clark Consulting Engineers 19 Ryan Road Edgewood, New Mexico 87015 Tele: (505) 281-2444 Fax: (505) 281-2444			
DATE	REVISION	LOT 2-A-2, BLOCK 2, SUNPORT PARK ALBUQUERQUE, BERNALILLO COUNTY, NEW MEXICO SUNPORT PARK HOSPITALITY / KUMAR	
SITE UTILITY PLAN			
DESIGNED BY: PWC	DRAWN BY: CCE	JOB #: YOGASH	SHEET
CHECKED BY: PWC	DATE: 3/23/16	FILE #: UTIL	C 103