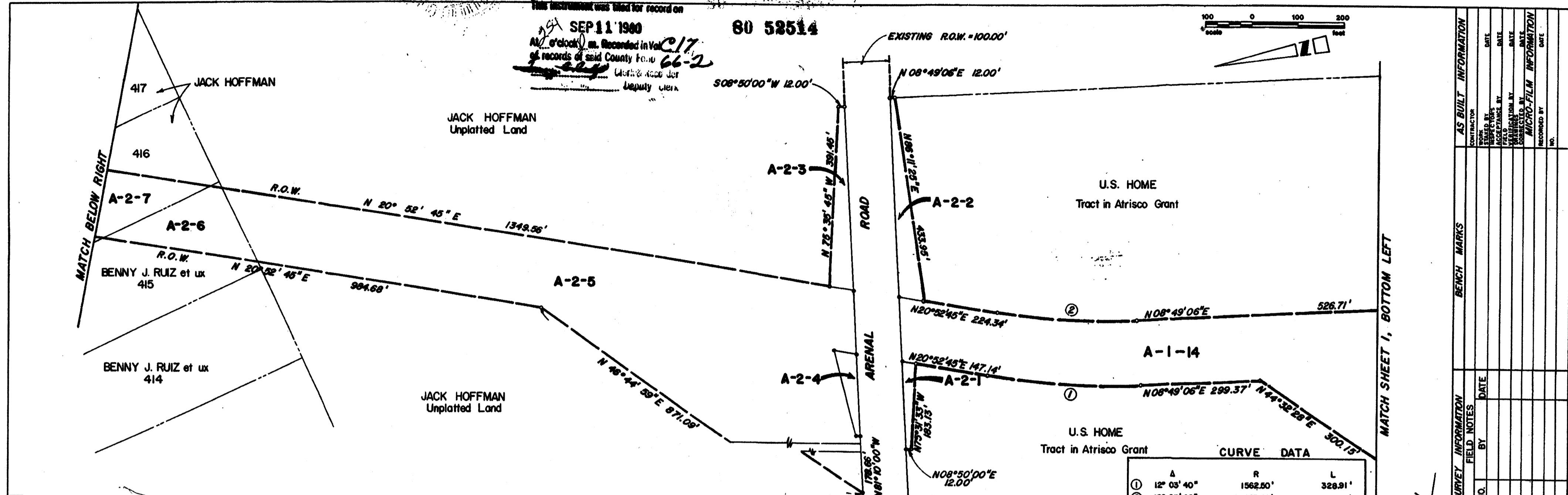
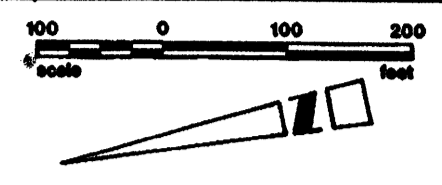


C17.66.2

C17.66.2

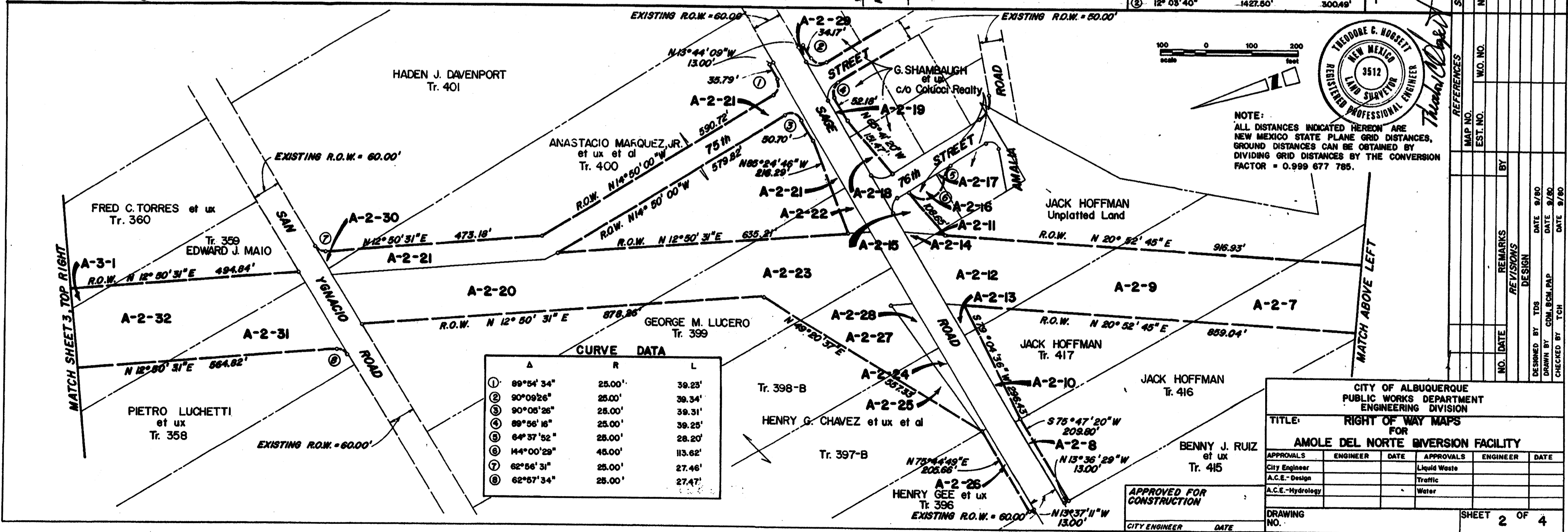


State of New Mexico | SS  
 County of Bernalillo | SS  
 This instrument was filed for record on  
**SEP 11 1980**  
 80 52514  
 At 10 o'clock a.m. Recorded in Vol. **C17**  
 of records of said County from **66-2**  
 [Signature] Deputy Clerk



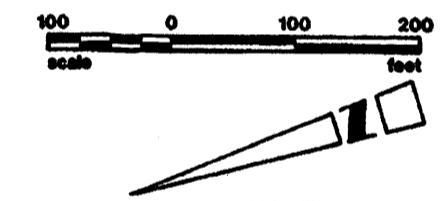
**CURVE DATA**

Station	Δ	R	L
①	12° 03' 40"	1562.50'	328.91'
②	12° 03' 40"	1427.50'	300.49'



**CURVE DATA**

Station	Δ	R	L
①	89°54'34"	25.00'	39.25'
②	90°09'26"	25.00'	39.34'
③	90°05'26"	25.00'	39.31'
④	89°56'16"	25.00'	39.25'
⑤	64°37'52"	25.00'	28.20'
⑥	144°00'29"	45.00'	113.62'
⑦	62°56'31"	25.00'	27.46'
⑧	62°57'34"	25.00'	27.47'



NOTE:  
 ALL DISTANCES INDICATED HEREON ARE  
 NEW MEXICO STATE PLANE GRID DISTANCES.  
 GROUND DISTANCES CAN BE OBTAINED BY  
 DIVIDING GRID DISTANCES BY THE CONVERSION  
 FACTOR = 0.999 677 785.

APPROVED FOR  
 CONSTRUCTION  
 CITY ENGINEER DATE

CITY OF ALBUQUERQUE  
 PUBLIC WORKS DEPARTMENT  
 ENGINEERING DIVISION

TITLE: **RIGHT OF WAY MAPS FOR AMOLE DEL NORTE DIVERSION FACILITY**

APPROVALS	ENGINEER	DATE	APPROVALS	ENGINEER	DATE
City Engineer			Liquid Waste		
A.C.E.-Design			Traffic		
A.C.E.-Hydrology			Water		

DRAWING NO. SHEET 2 OF 4

C17.66.2

C17.66.2