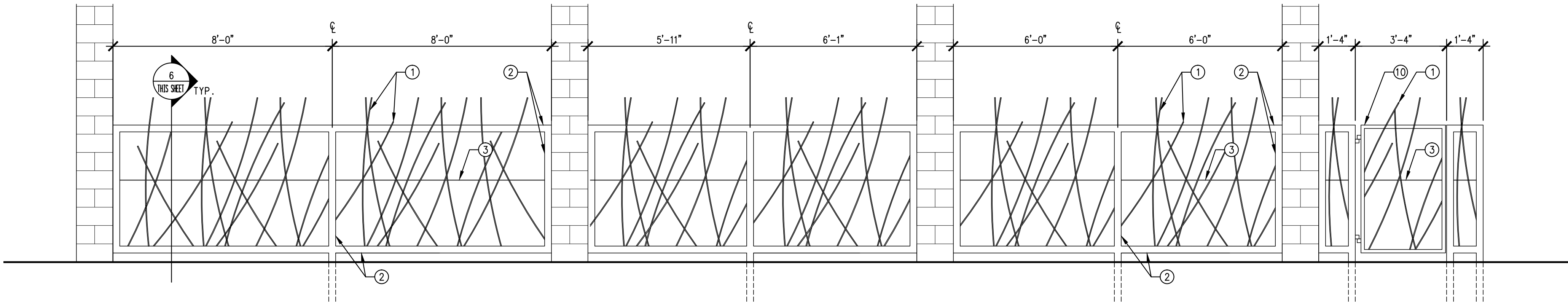


ELEVATION

EAST FENCE TWR. C

11

3/8"-1'-0"

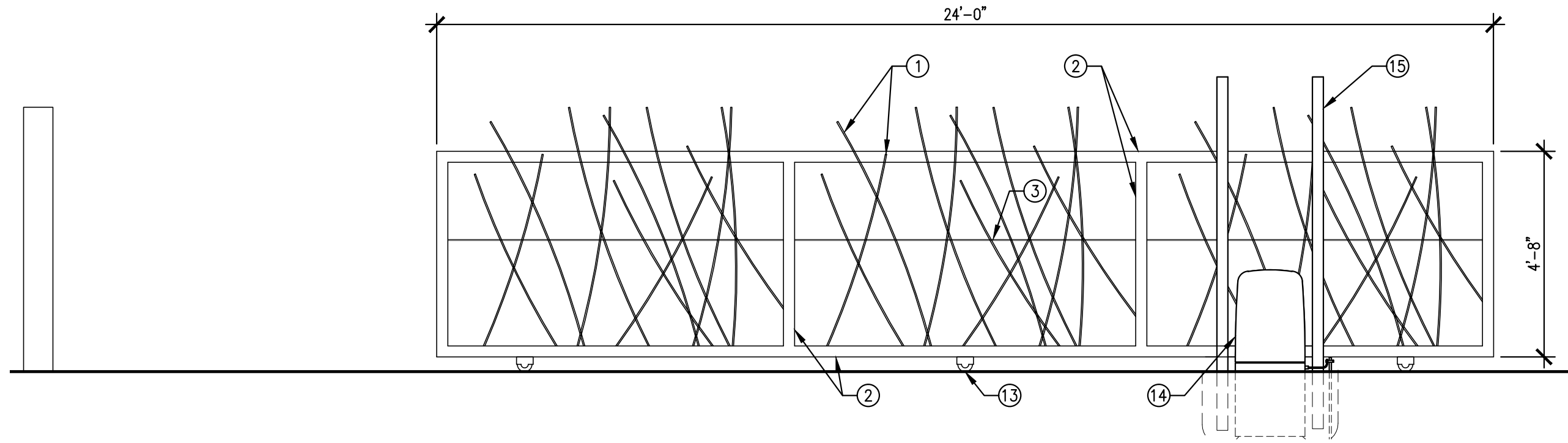


ELEVATION

NORTH FENCE AT TOWER C

12

3/8"-1'-0"

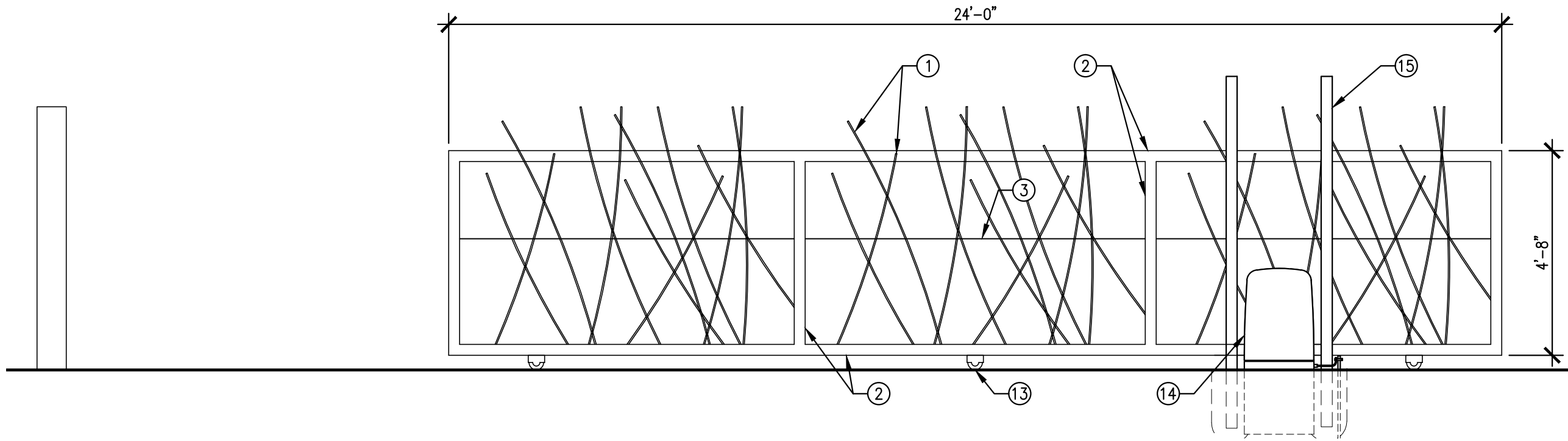


ELEVATION

EXIT CAR GATE AT NORTH END OF PARKING LOT

13

3/8"-1'-0"

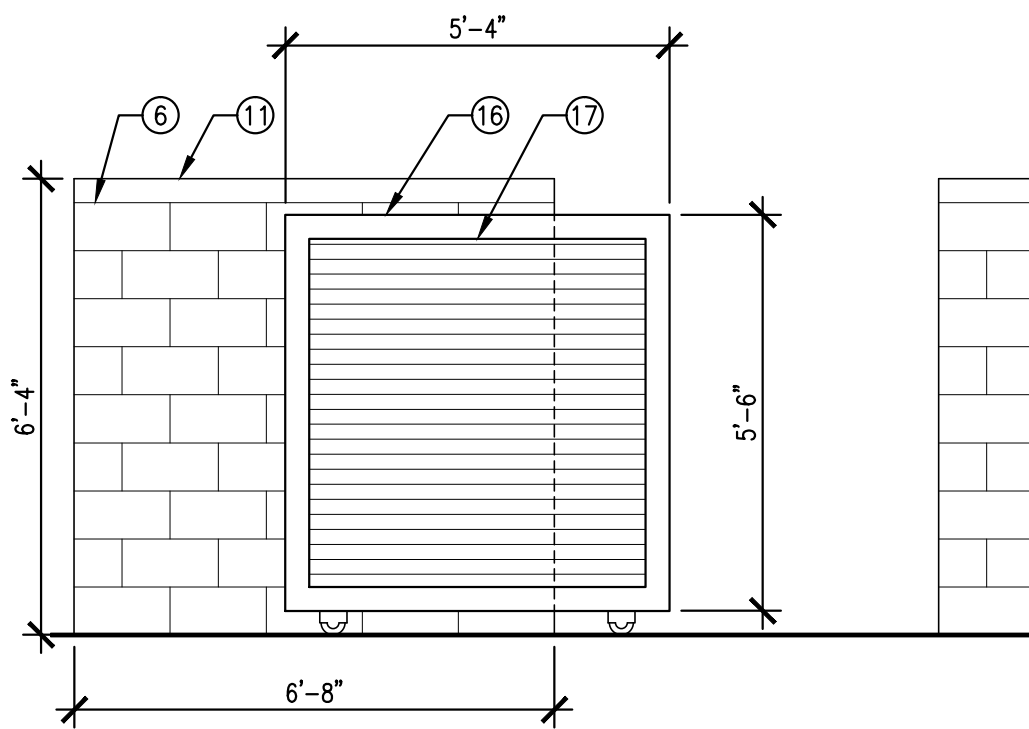


ELEVATION

ENTRANCE CAR GATE AT SOUTH END OF PARKING LOT

14

3/8"-1'-0"

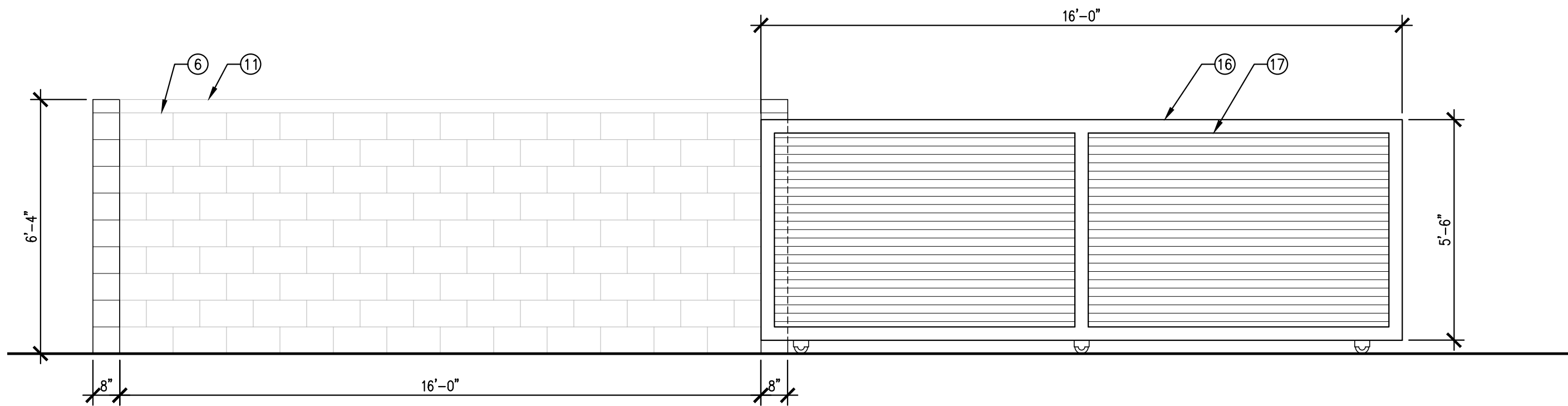


ELEVATION

TRASH ENCL. GATE

15

3/8"-1'-0"

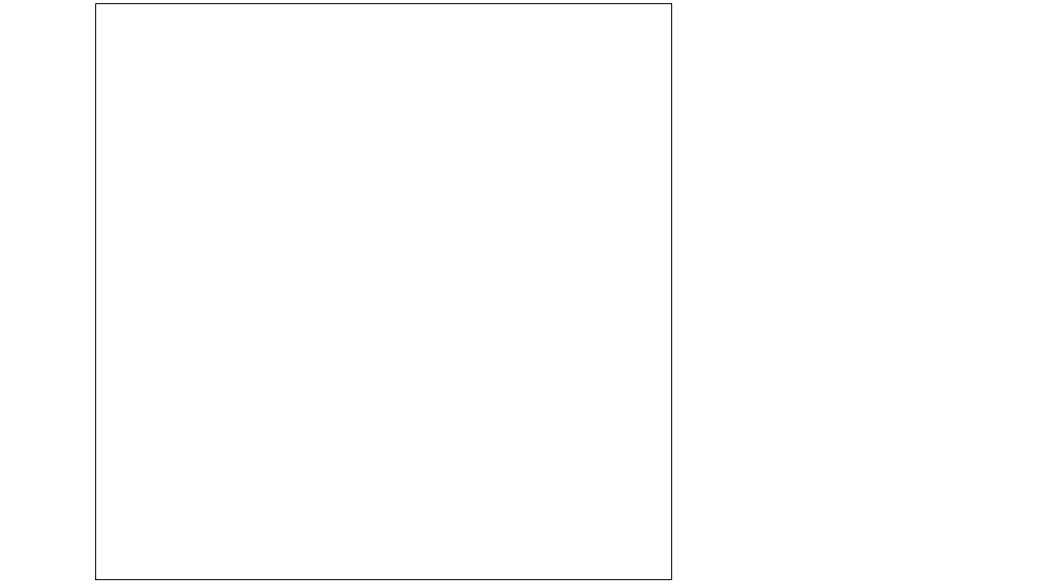


ELEVATION

TRASH ENCLOSURE WEST DOOR

16

3/8"-1'-0"



Keyed Notes

- 20'-0" RADIUS 3/8" REBAR AT VARIOUS LENGTH FROM 4'-0" TO 5'-6".
- HSS 3x3x1/8 FENCE FRAME.
- PLATE 3/16x3.
- FINISH GRADE.
- (3) #4 REBAR CONTINUOUS.
- 8" CMU EXPOSED FINISH, W/ STD. DUR-O-WAL @ ALT. COURSES. GROUT REINFORCED CELLS, GROUT ALL CELLS BELOW GRADE. MASONRY EXPANSION JOINTS @ 12'-0" O.C. MAX.
- #4 VERT. @ 48" O.C.
- #4 DOWELS @ 48" O.C. ALT. HOOKS.
- CONCRETE FOOTING.
- HSS 1-1/2x1-1/2x1/8 GATE FRAME.
- 4" CMU CAP BLOCK EXPOSED FINISH.
- 8" CMU EXPOSED FINISH PLASTER, SEE SITE PLAN.
- V-GROOVE WHEELS AND V-TRACK.
- POWERED GATE OPERATOR.
- 2.5"x2.5"x3/16" GATE GUIDES, 16" DEEP CONCRETE FOOTING W/ 4" MIN COVERAGE ON ALL SIDES, MANUFACTURE/ FABRICATOR APPLIED POWDER COAT.
- HSS 4x4x1/8 DOOR FRAME.
- PERFORATED CORRUGATED METAL INFILL PANEL TO MATCH BUILDING'S SHADE STRUCTURE.

integrated
design architecture

906 1/2 Park Avenue SW
Albuquerque, NM 87102
tel:505.243.3499
fax:505.243.3583
info@integrateddesignarch.com
www.integrateddesignarch.com

Greater Albuquerque Housing Partnership
CUATRO
Albuquerque, New Mexico

PROJECT ARCHITECT:
BOB HALL, AIA

Project #:
IDA-14-13-P
Date:
SEPTEMBER 22, 2014

SITE FENCE & WALL DETAILS

By: KIS
File: SITE400 FENCE & WALL.DWG
Plot Date: 9/22/2014 10:25:11 AM

Sheet of
SITE401