

CORRECTION PLAT FOR

LOTS 1-A THROUGH 15-A, BLOCK 1,
 LOTS 1-A THROUGH 15-A BLOCK 2,
 LOTS 1-A THROUGH 10-A, BLOCK 3
 AND TRACTS "A-1" THROUGH "G-1",
 JUAN TABO HILLS UNIT 3B
 WITHIN

SECTION 34
 TOWNSHIP 10 NORTH, RANGE 4 EAST, NMPM
 CITY OF ALBUQUERQUE
 BERNALILLO COUNTY, NEW MEXICO
 MAY, 2014

ACS MONUMENT
 9-M22
 Y=1,473,742.595
 X=1,558,637.053
 C-G=0.899848202
 Area=0708746.18'
 CENTRAL ZONE
 (NAD 1983)



ALDRICH LAND SURVEYING

P.O. BOX 30701, ALBQ., N.M. 87190
 505-884-1990

Checked: ALS
 Date: 4/24/2014
 Job: A11063

Drawn: STEPHEN
 Scale: AS SHOWN

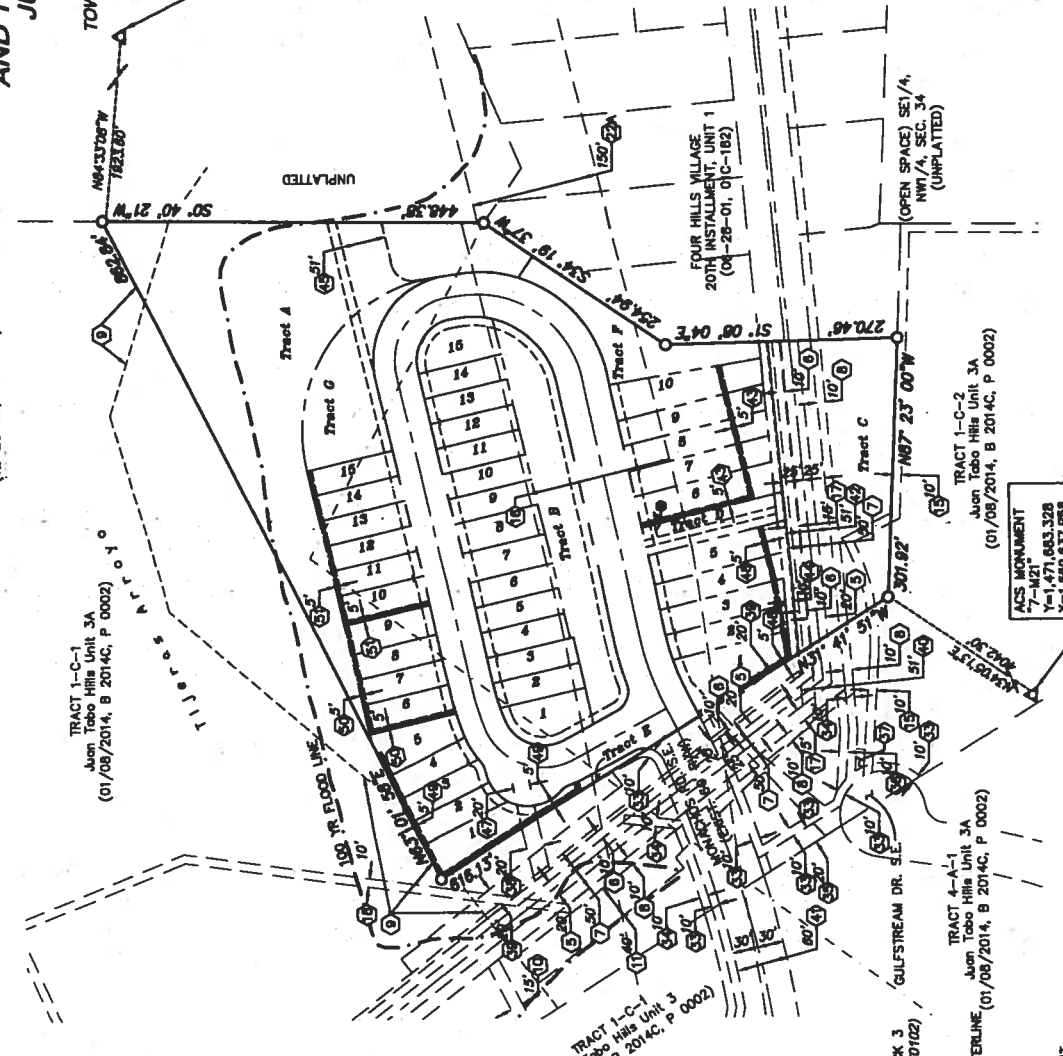
Drawn: STEPHEN
 Date: 5/22/14

Drawn: STEPHEN
 Date: 5/22/14

Drawn: STEPHEN
 Date: 5/22/14

Drawn: STEPHEN
 Date: 5/22/14

Drawn: STEPHEN
 Date: 5/22/14



LEGEND
 O FOUND AND SET 5/8" REBAR
 WITH CAP "RS 7718"

ACS MONUMENT
 7-M21
 Y=1,471,043.328
 X=1,558,637.053
 C-G=0.899848202
 Area=0709177.90'
 CENTRAL ZONE
 (NAD 1983)

LIMITS OF VACATION

J.T.H.U.1. - JUAN TABO HILLS UNIT 1
 (12/22/2005, BK-2005C, PG-408)

J.T.H.U.2. - JUAN TABO HILLS UNIT 2
 (05/19/2008, BK-2008C, PG-108)

- 5 EXISTING 20' C.O.A. PERMANENT UTILITY EASEMENT (09-16-78, MISC. 608, PG. 359-364)
- 6 EXISTING 10' C.O.A. U.G. SEWER LINE EASEMENT (08-21-79, BK.MISC. 898, PG. 291-293)
- 7 EXISTING 50' C.O.A. DRAINAGE & UTILITY EASEMENT (01-07-81, C17-174)
- 8 EXISTING 10' GAS EASEMENT (09-30-87, BK. 97-27, PGS. 113-119)
- 11 EXISTING C.O.A. PUBLIC DRAINAGE EASEMENT (12-28-88, 98C-387)
- 15 EXIST. 10' QWEST EASEMENT (12/22/2005, BK-2005C, PG-408)
- 16 EXISTING PUBLIC SERVICE COMPANY OF NEW MEXICO EASEMENT (12/22/2005, BK-2005C, PG-408)
- 17 EXISTING 15' WATERLINE EASEMENT (12/22/2005, BK-2005C, PG-408)
- 18 EXIST. 10' PNM GAS LINE EASEMENT (12/22/2005, BK-2005C, PG-408)
- 24 150' PUBLIC SERVICE COMPANY OF NEW MEXICO EASEMENT (04-01-75, BK.MISC. 414, PG. 443)

EASEMENTS 33 through 41 TO BE DEDICATED ON THE JUAN TABO HILLS UNIT 3A FINAL PLAT

- 53 NEW 10' P.U.E.
- 54 NEW 10' PNM EASEMENT.
- 55 NEW 20' PUBLIC DRAINAGE EASEMENT.
- 56 NEW 10' CENTURY LINK EASEMENT.
- 57 NEW 10'-20' CENTURY LINK ESMT.
- 58 NEW 20' WIDE PUBLIC SANITARY SEWER EASEMENT.
- 59 NEW 20' PUBLIC STORM DRAIN EASEMENT.
- 60 NEW C.O.A. 51' WIDE PRIVATE ACCESS EASEMENT.
- 61 NEW 60' PUBLIC ROADWAY EASEMENT. (01/22/2014, BK-2014C, PG-5)
- 62 EXISTING 51' WIDE PRIVATE ACCESS EASEMENT (01/22/2014, BK-2014C, PG-5)
- 63 EXISTING 5' WIDE PRIVATE CROSS LOT DRAINAGE EASEMENT FOR THE BENEFIT OF LOTS 6 - 10, BLOCK 3 (01/22/2014, BK-2014C, PG-5) VACATED (14DRB-70102)
- 64 EXISTING 10' PUBLIC DRAINAGE EASEMENT (01/22/2014, BK-2014C, PG-5)
- 65 EXISTING 51' WIDE PUBLIC SANITARY SEWER AND WATERLINE EASEMENT (01/22/2014, BK-2014C, PG-5)
- 66 EXISTING 15' WIDE PUBLIC WATERLINE EASEMENT (01/22/2014, BK-2014C, PG-5)
- 67 EXISTING 20' WIDE PUBLIC SANITARY SEWER EASEMENT (01/22/2014, BK-2014C, PG-5)
- 68 EXISTING 5' WIDE PRIVATE CROSS LOT DRAINAGE EASEMENT FOR THE BENEFIT OF LOTS 1 - 5, BLOCK 3 VACATED (14DRB-70102)
- 69 EXISTING 5' WIDE PRIVATE CROSS LOT DRAINAGE EASEMENT FOR THE BENEFIT OF LOTS 1 - 5, BLOCK 1 VACATED (14DRB-70102)
- 70 EXISTING 5' WIDE PRIVATE CROSS LOT DRAINAGE EASEMENT FOR THE BENEFIT OF LOTS 6 - 9, BLOCK 1 VACATED (14DRB-70102)
- 71 EXISTING 5' WIDE PRIVATE CROSS LOT DRAINAGE EASEMENT FOR THE BENEFIT OF LOTS 10 - 15, BLOCK 1 VACATED (14DRB-70102)

CORRECTION PLAT FOR

REPLACEMENT
**LOTS 1-A THROUGH 15-A, BLOCK 1,
 LOTS 1-A THROUGH 15-A, BLOCK 2,
 LOTS 1-A THROUGH 10-A, BLOCK 3
 AND TRACTS "A-1" THROUGH "G-1",
 JUAN TABO HILLS UNIT 3B**
 WITHIN
 SECTION 34
 TOWNSHIP 10 NORTH, RANGE 4 EAST, NMPM
 CITY OF ALBUQUERQUE
 BERNALILLO COUNTY, NEW MEXICO
 MAY, 2014

UNPLATTED
 SO. 40' 21" W. 100' 00' 00" N. 100' 00' 00" E. 100' 00' 00" S. 100' 00' 00" W.

NOTES

- TRACT A-1 (1.8945 AC) OWNED BY JTH LLC BLANKET DRAINAGE EASEMENT GRANTED TO ALA, F.C.A. AND PUBLIC PEDESTRIAN ACCESS EASEMENT GRANTED TO C.O.A. BY THIS PLAT.
- TRACT B-1 (1.0687 AC) OWNED AND MAINTAINED BY THE "JUAN TABO HILLS" H.O.A.
- TRACT C-1 (1.0180 AC) OWNED AND MAINTAINED BY THE "JUAN TABO HILLS" H.O.A.
- TRACT D-1 (0.1189 AC) OWNED AND MAINTAINED BY THE "JUAN TABO HILLS" H.O.A.
- TRACT E-1 (0.2503 AC) OWNED AND MAINTAINED BY THE "JUAN TABO HILLS" H.O.A.
- TRACT F-1 (0.3243 AC) OWNED AND MAINTAINED BY THE "JUAN TABO HILLS" H.O.A.

EASEMENTS

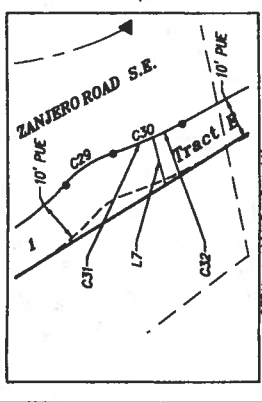
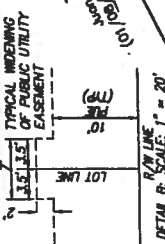
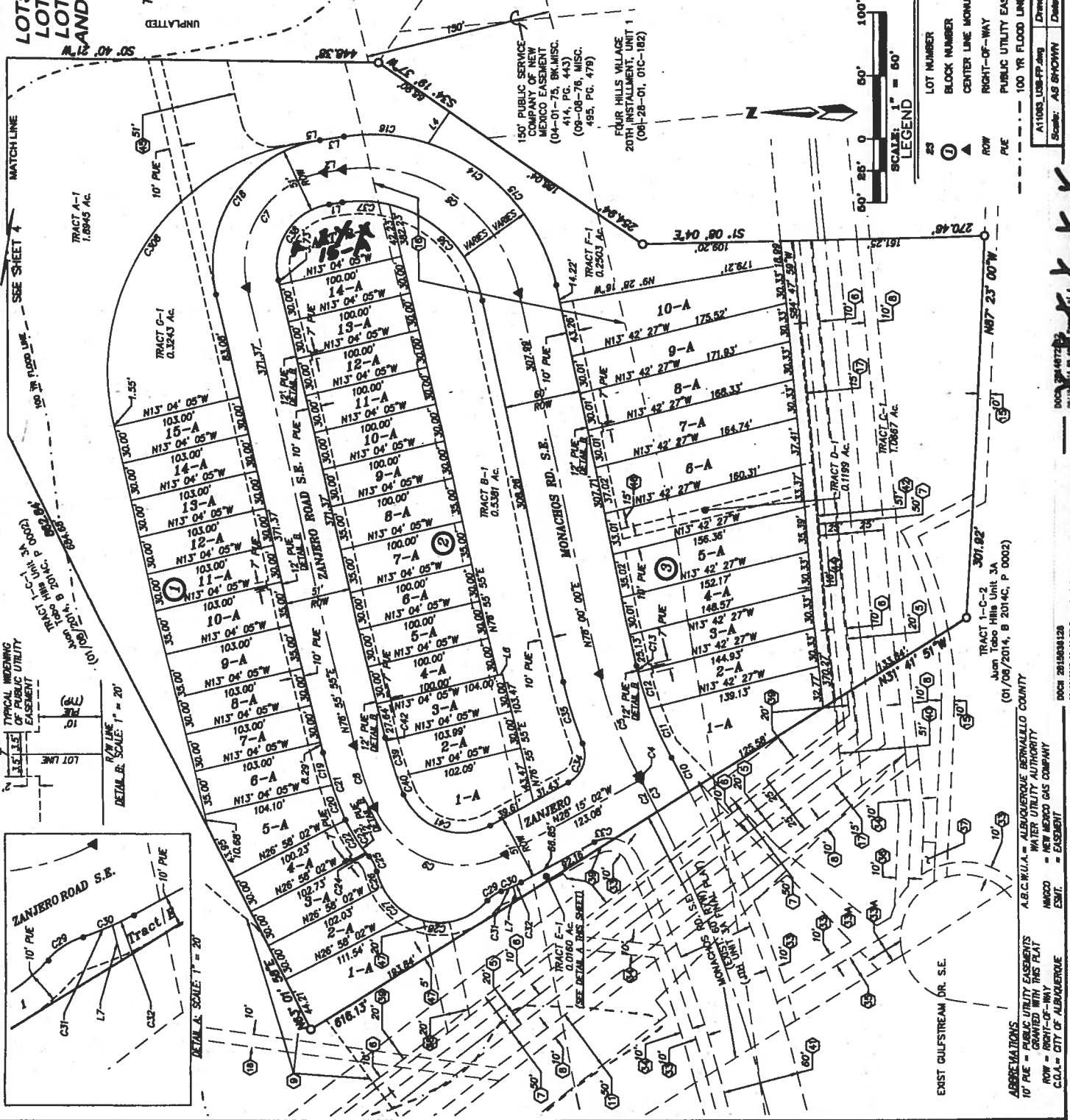
EASEMENTS 33 through 40 TO BE DEDICATED ON THE "JUAN TABO HILLS UNIT 3A FINAL PLAT"

- 33 EXIST 10' PUE
- 34 EXIST 10' PUE (WIDTH VARIES)
- 35 EXIST 10' PNM
- 36 EXIST 20' PUBLIC DRAINAGE EASEMENT
- 37 EXIST 10' CENTURY LINK EASEMENT
- 38 EXIST 10' 20' CENTURY LINK EASEMENT
- 39 EXIST 20' PUBLIC SANITARY SEWER EASEMENT
- 40 EXIST 20' PUBLIC STORM DRAIN EASEMENT
- 41 EXIST. C.O.A. 51' PRIVATE ACCESS EASEMENT
- 42 EXIST. 60' PUBLIC ROADWAY EASEMENT



P.O. BOX 30701, ALBU., N.M. 87190
 505-864-1890

Scale: AS SHOWN Date: 4/24/2014
 Drawn: STEPHEN
 Checked: ALS
 Job: A11003
 Sheet 3 of 4



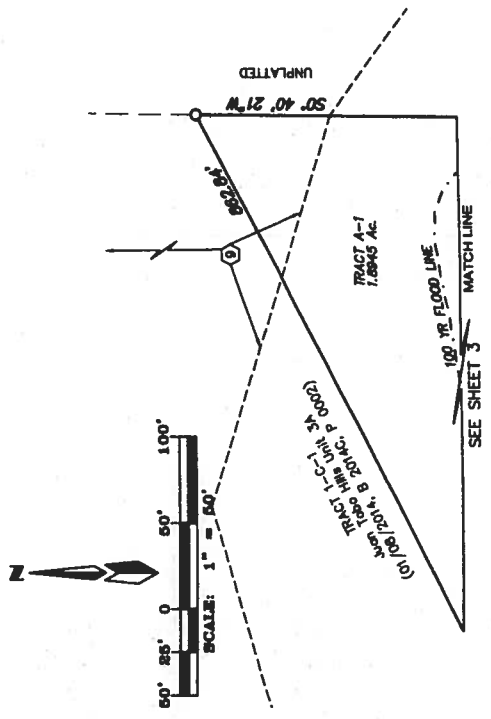
ABBREVIATIONS
 10' PUE = PUBLIC UTILITY EASEMENTS
 10' ROW = RIGHT-OF-WAY
 C.O.A. = CITY OF ALBUQUERQUE ESM.
 A.B.C.W.I.A. = ALBUQUERQUE BERNALILLO COUNTY WATER UTILITY AUTHORITY
 NMPMCO = NEW MEXICO GAS COMPANY ESM.
 DCR# 2015038128
 DATE: 01/08/2014, B 2014C, P 0002

CORRECTION PLAT FOR REPLAT

LOTS 1-A THROUGH 15-A, BLOCK 1, LOTS 1-A THROUGH 15-A, BLOCK 2, LOTS 1-A THROUGH 10-A, BLOCK 3 AND TRACTS "A-1" THROUGH "G-1", JUAN TABO HILLS UNIT 3B WITHIN

SECTION 34
TOWNSHIP 10 NORTH, RANGE 4 EAST, NMPM
CITY OF ALBUQUERQUE
BERNALILLO COUNTY, NEW MEXICO
MAY, 2014

BLOCK 1			BLOCK 2			BLOCK 3		
OLD LOT #	NEW LOT #	AREA	OLD LOT #	NEW LOT #	AREA	OLD LOT #	NEW LOT #	AREA
1	1-A	0.1300 Ac.	1	1-A	0.1700 Ac.	1	1-A	0.1574 Ac.
2	2-A	0.0723 Ac.	2	2-A	0.0712 Ac.	2	2-A	0.0890 Ac.
3	3-A	0.0713 Ac.	3	3-A	0.0708 Ac.	3	3-A	0.1071 Ac.
4	4-A	0.0694 Ac.	4	4-A	0.0689 Ac.	4	4-A	0.1039 Ac.
5	5-A	0.0688 Ac.	5	5-A	0.0689 Ac.	5	5-A	0.1239 Ac.
6	6-A	0.0630 Ac.	6	6-A	0.0689 Ac.	6	6-A	0.1300 Ac.
7	7-A	0.0709 Ac.	7	7-A	0.0687 Ac.	7	7-A	0.1147 Ac.
8	8-A	0.0709 Ac.	8	8-A	0.0687 Ac.	8	8-A	0.1172 Ac.
9	9-A	0.0689 Ac.	9	9-A	0.0689 Ac.	9	9-A	0.1198 Ac.
10	10-A	0.0689 Ac.	10	10-A	0.0689 Ac.	10	10-A	0.1487 Ac.
11	11-A	0.0709 Ac.	11	11-A	0.0689 Ac.			
12	12-A	0.0709 Ac.	12	12-A	0.0689 Ac.			
13	13-A	0.0709 Ac.	13	13-A	0.0689 Ac.			
14	14-A	0.0709 Ac.	14	14-A	0.0689 Ac.			
15	15-A	0.0709 Ac.	15	TRACT 2-A	0.1080 Ac.			



Curve Table									
Curve #	Radius	Delta	Chord Direction	Chord Length	Curve #	Length	Radius	Delta	Chord Direction
C2	28.31	1100.00	N62° 28' 12"E	28.31	C23	34.85	100.50	18.70	S57° 14' 32"W
C3	28.31	1100.00	S62° 28' 12"W	28.31	C24	3.95	100.50	2.25	S48° 31' 29"W
C4	3.66	1100.00	S61° 39' 15"W	3.66	C25	13.40	25.00	30.72	S62° 45' 22"W
C5	86.09	300.00	S69° 46' 46"W	85.79	C26	13.08	51.00	14.70	S70° 45' 51"W
C6	186.85	125.00	S34° 45' 55"W	171.25	C27	31.99	51.00	35.94	S45° 26' 33"W
C7	123.63	75.00	S55° 46' 07"E	110.24	C28	113.13	51.00	127.10	S14° 33' 56"W
C8	51.49	300.00	N72° 00' 53"E	51.43	C29	13.40	25.00	30.72	S33° 37' 28"E
C9	124.81	75.00	N19° 25' 25"E	110.80	C30	17.51	100.50	9.96	S23° 15' 31"E
C10	30.28	1130.00	N62° 18' 34"E	30.28	C31	10.36	100.50	5.91	S21° 13' 13"E
C11	42.55	270.00	N65° 04' 25"E	42.51	C32	7.15	100.50	4.08	S26° 12' 44"E
C12	30.04	270.00	N73° 46' 34"E	30.03	C33	18.80	25.00	37.82	S9° 20' 55"E
C13	4.86	270.00	N77° 26' 55"E	4.86	C34	36.03	25.00	82.56	S69° 32' 27"E
C14	227.13	150.50	N34° 45' 55"E	206.18	C35	50.86	330.00	6.83	N73° 35' 04"E
C15	156.86	150.50	N47° 45' 37"E	151.59	C36	112.41	99.50	64.73	N45° 36' 11"E
C16	86.27	150.50	N55° 31' 33"E	67.68	C37	37.76	99.50	21.74	N2° 24' 07"E
C17	165.93	100.50	N55° 46' 07"W	147.72	C38	61.73	49.50	94.60	N55° 46' 07"W
C18	26.74	325.50	S74° 34' 43"W	28.73	C39	30.06	274.50	6.28	S73° 16' 02"W
C20	29.13	325.50	S66° 36' 42"W	28.12	C40	14.88	274.50	3.08	S65° 37' 47"W
C21	55.87	325.50	S72° 00' 53"W	55.80	C41	82.36	49.50	95.35	S65° 26' 33"W
C22	30.22	100.50	S55° 15' 56"W	30.10	C42	2.36	274.50	0.49	S76° 41' 06"W

Parcel Line Table		
Line #	Length	Direction
L1	10.36	N5° 28' 09.46"W
L2	14.90	S8° 28' 09.46"E
L3	19.41	N6° 28' 09.46"W
L4	30.29	S55° 40' 22.62"E
L5	13.52	N6° 28' 09.46"W
L6	4.00	N13° 04' 05.33"W
L7	11.36	S75° 20' 33.64"W

Public Utility Easements (PUE) shown on this plat are granted for the common and joint use of:
 Public Service Company of New Mexico ("PSCN"), a New Mexico corporation, (PSCN Electric) for installation, maintenance, and service of overhead and underground electrical lines, transformers, and other equipment and related facilities reasonably necessary to provide electrical services.
 New Mexico Gas Company ("NMGC") for installation, maintenance, and service of natural gas lines, valves and other equipment and facilities reasonably necessary to provide gas service.
 Charter Communications, L.P. ("Charter") for installation, maintenance, and service of each line, cable, and other related equipment and facilities reasonably necessary to provide communication services.
 Charter Communications, L.P. ("Charter") for installation, maintenance, and service of each line, cable, and other related equipment and facilities reasonably necessary to provide cable services.
 Included is the right to build, rebuild, reconstruct, reconstruct, locate, modify, change, improve, replace, modify, repair, with five access to, from, and over each easement, with the right and privilege of going upon, over and across adjoining lands of Charter for the purposes set forth herein and with the right to utilize the right of way and easement to extend services to customers of Charter, including service to Charter's customers for electric transmission, which intersects with the purposes set forth herein. No building, sign, pool (aboveground or subsurface), hot tub, concrete or wood pool decking, or other structure shall be erected or constructed on said easements, nor shall any well be drilled or operated thereon. Property owners shall be solely responsible for correcting any violations of National Electrical Safety Code by construction of poles, ceilings, or any structures adjacent to or near easements shown on this plat that extend ten (10) feet in front of transformer/switchgear, or include a transformer/switchgear door and five (5) feet on each side.
 Disclaimer: In approving this plat, Public Service Company of New Mexico (PSCN), New Mexico Gas Company (NMGC) and Charter Communications, L.P. (Charter) did not conduct a Title Search of the properties shown herein. Consequently, PSCN and NMGC do not waive or release any easement or easement rights which may have been granted by prior plat, register or other document and which are not shown on this plat.



ALDRICH LAND SURVEYING

P.O. BOX 30701, ALBQ., N.M. 87190
 505-864-1990

Drawn: STEPHEN
 Date: 4/24/2014
 Checked: ALS
 Sheet 4 of 4