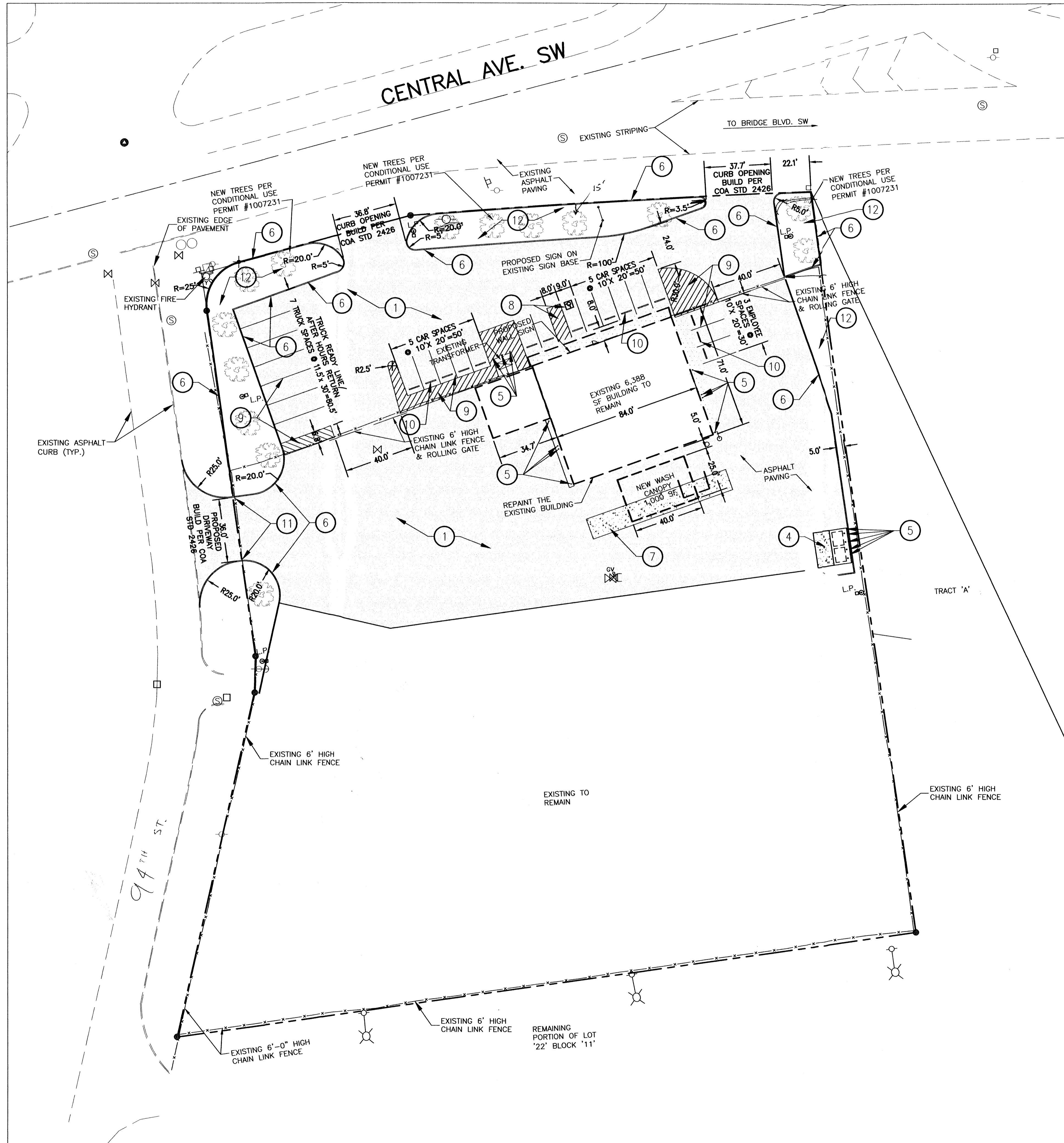


JWF:EPLOT:PCS:CAKE - HOWARD - 1/22/2009 9:25 AM ARCH D (36.00 X 24.00 INCHES)  
 \\:\DOCUMENTS AND SETTINGS\CAKE\DESKTOP\DESIGN\DRAWINGS\REFS\021126-C-SF.DWG



**CONSTRUCTION NOTES**

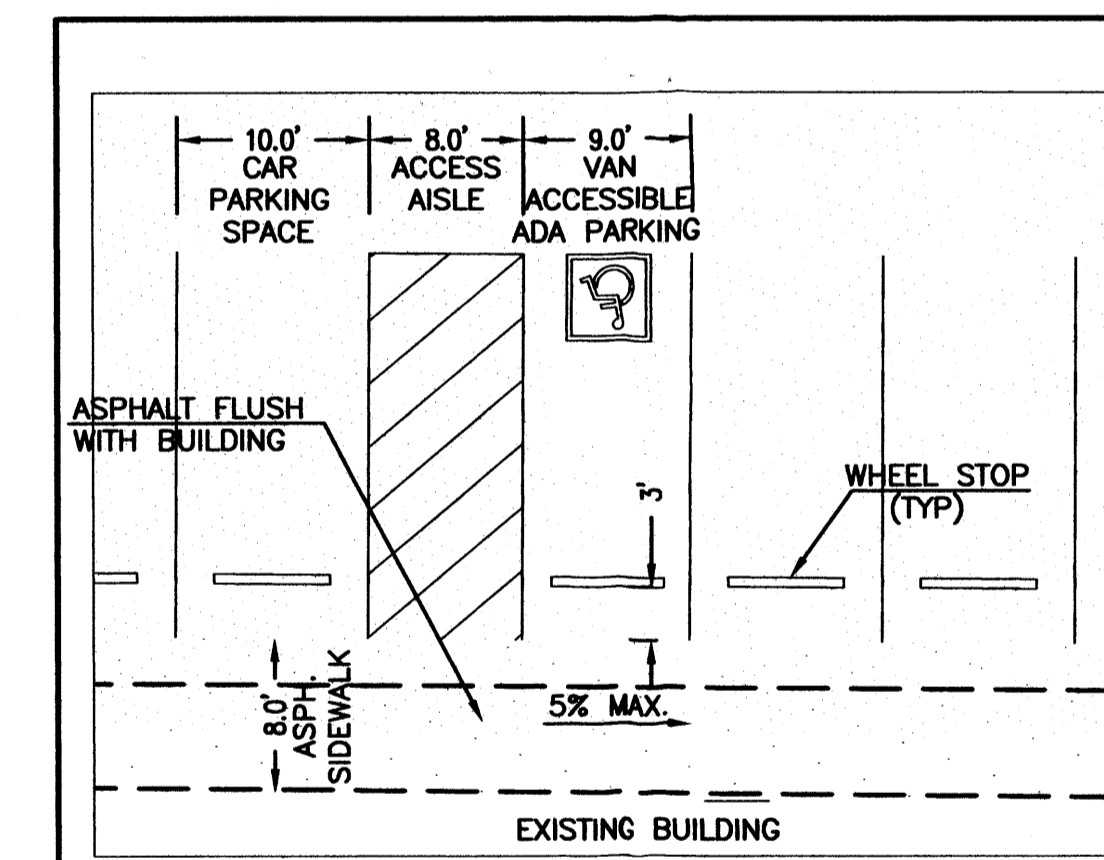
1. CONSTRUCT NEW PAVEMENT PER DETAIL 11, SHEET C-501.
2. CONSTRUCT 4' CURB OPENING.
3. CONSTRUCT CONCRETE DOLLY PAD PER DETAIL 10, SHEET C-501.
4. CONSTRUCT TRASH ENCLOSURE PER DETAIL 1 SHEET A1-1.
5. CONSTRUCT BOLLARDS PER DETAIL 4, SHEET A1-1.
6. INSTALL HEADER CURB PER DETAIL 6, SHEET C-501.
7. CONSTRUCT 12'x 84' CONCRETE PAD PER DETAIL 10, SHEET C-501.
8. INSTALL VAN ACCESSIBLE ADA PARKING PER DETAILS 1, 2 & 3, SHEET C-501.
9. INSTALL PARKING STRIPING PER DETAILS 2 & 4, SHEET C-501.
10. INSTALL PRECAST BUMPER BLOCKS PER DETAIL 5, SHEET C-501.
11. INSTALL NEW CHAIN LINK SWING GATES.
12. LANDSCAPE AREA - SEE LANDSCAPE PLANS.

**LEGEND**

- EXISTING COMMUNICATION PEDESTAL
- EXISTING NTUA GAS WARNING SIGN
- EXISTING FOUND 5/8" REBAR W/O CAP
- EXISTING FOUND PK MAG, CONCRETE NAIL
- EXISTING UTILITY POLE
- EXISTING TRANSMISSION LINE POLE
- ⊕ EXISTING WATER VALVE
- ⊕ EXISTING FIRE HYDRANT
- ⊕ EXISTING SEWER MANHOLE
- ⊕ EXISTING TELEPHONE BURIED CABLE WARNING SIGN
- ⊕ EXISTING STORM DRAINAGE MANHOLE
- ⊕ EXISTING LIGHT POLE
- ▨ PROPOSED ASPHALT
- ▨ PROPOSED CONCRETE

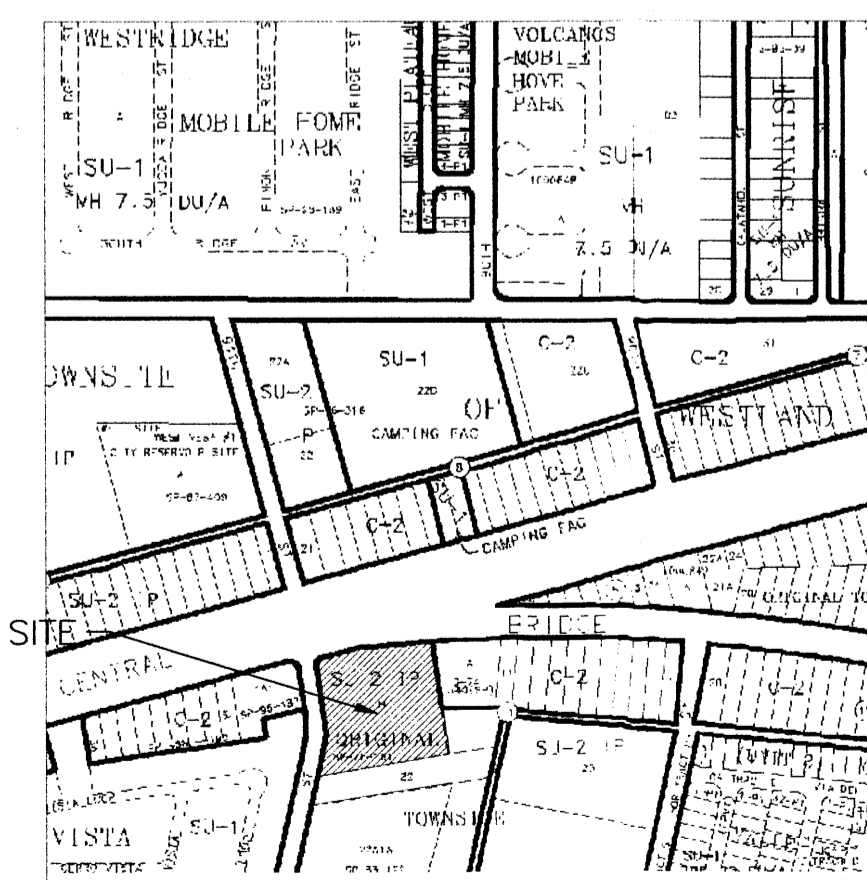
**PARKING CALCULATIONS**

PARKING REQUIRED:		
OFFICE 1,326 SF/200	=	7 SPACES
WAREHOUSE 6,056 SF/2000	=	4 SPACES
TOTAL REQUIRED	=	11 SPACES
PARKING PROVIDED	=	16 SPACES
INCLUDING 1 VAN ACCESSIBLE SPACE		



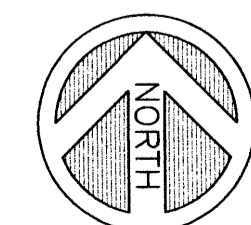
**VAN ACCESSIBLE PARKING SPACE DETAIL**

SCALE: 1" = 10'



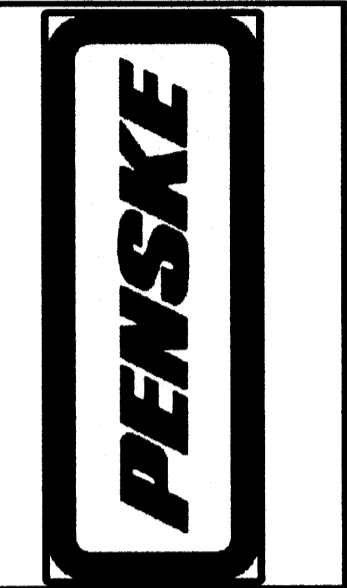
VICINITY MAP  
 ZONE ATLAS K-9

CITY OF ALBUQUERQUE  
 "SOLID WASTE"  
 MANAGEMENT DEPARTMENT  
 APPROVED



0 15' 30' 60'  
 SCALE: 1" = 30'

**WHPacific**  
 6501 Americas Pkwy NE, Suite 400  
 Albuquerque, NM 87110  
 505-247-0284 Fax 505-242-4845  
 www.whpacific.com



SHEET INFO		REVISIONS		REMARKS	
DSBY	CAB	NO.	BY	DATE	

**SITE PLAN**

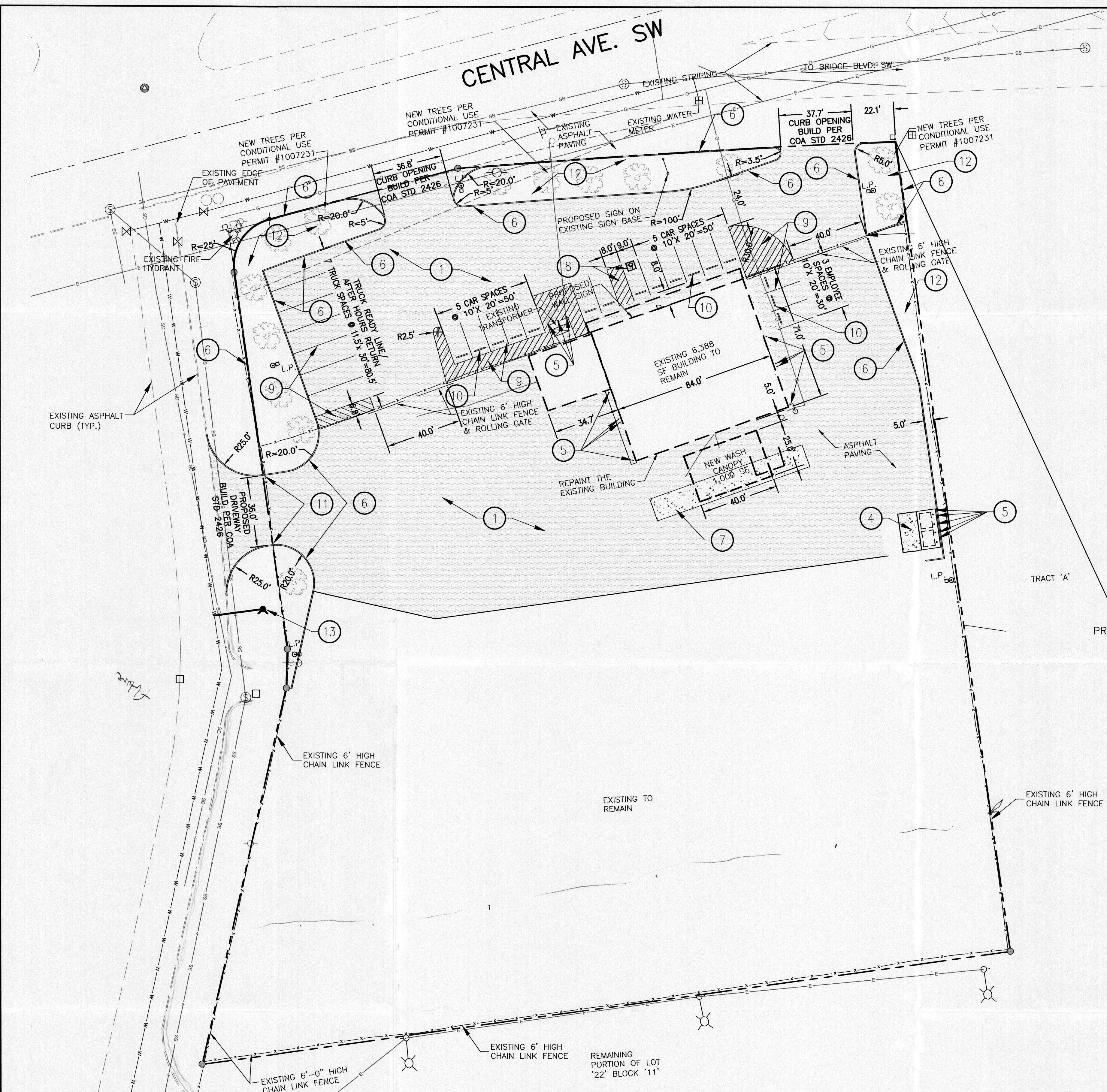
FACILITY UPGRADES FOR PENSKE TRUCK LEASING  
 9200 W. CENTRAL S.W.  
 ALBUQUERQUE, NM

PROJECT NUMBER 021126 DRAWING FILE NAME SITE PLAN

SHEET NUMBER **C-101**

SCALE 1" = 30'

DWF6 E:\PLOT\PC3.CAKE, HOWARD, 1/27/2009 8:41 AM, ARCH D (36.00 X 24.00 INCHES)  
 C:\DOCUMENTS AND SETTINGS\HCAKE\DESKTOP\DESIGN\DRAWINGS\REFS\021126-C-SP.DWG



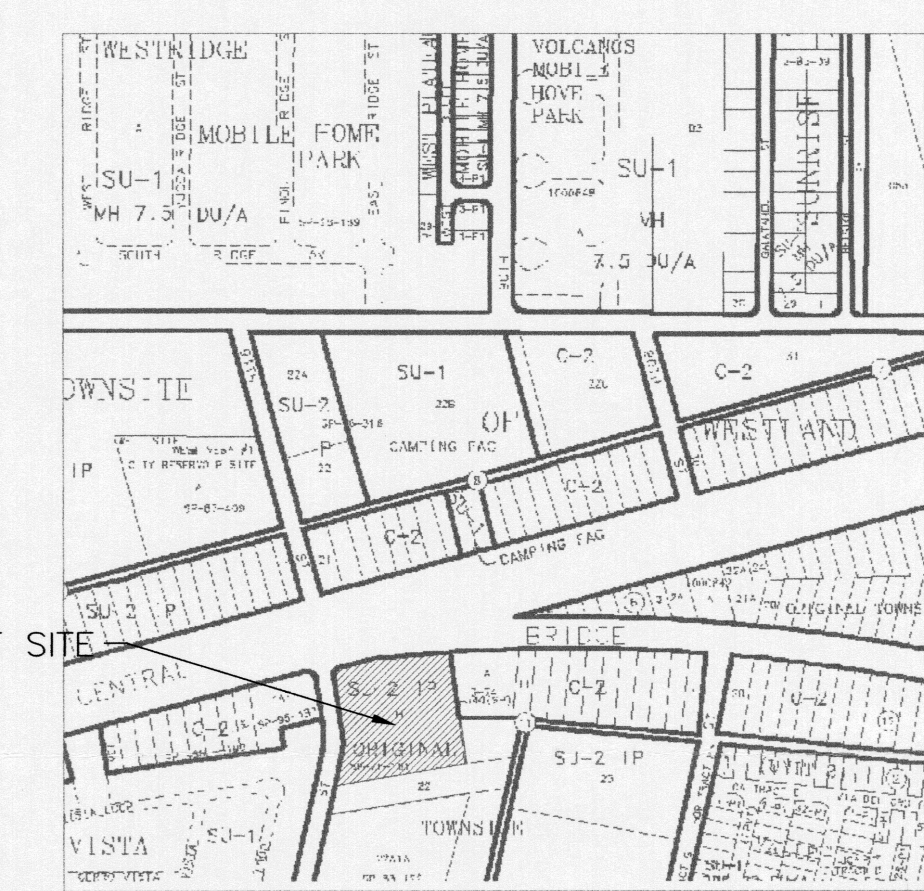
EXISTING WHITE BUILDING TO REMAIN

**LEGEND**

- EXISTING COMMUNICATION PEDESTAL
- EXISTING NTUA GAS WARNING SIGN
- ⊕ EXISTING FOUND 5/8" REBAR W/O CAP
- ⊕ EXISTING FOUND PK MAG. CONCRETE NAIL
- EXISTING UTILITY POLE
- EXISTING TRANSMISSION LINE POLE
- ⊕ EXISTING WATER VALVE
- ⊕ EXISTING FIRE HYDRANT
- ⊕ EXISTING SEWER MANHOLE
- ⊕ EXISTING TELEPHONE BURIED CABLE WARNING SIGN
- ⊕ EXISTING STORM DRAINAGE MANHOLE
- EXISTING LIGHT POLE
- ▨ PROPOSED ASPHALT
- ▨ PROPOSED CONCRETE

**PARKING CALCULATIONS**

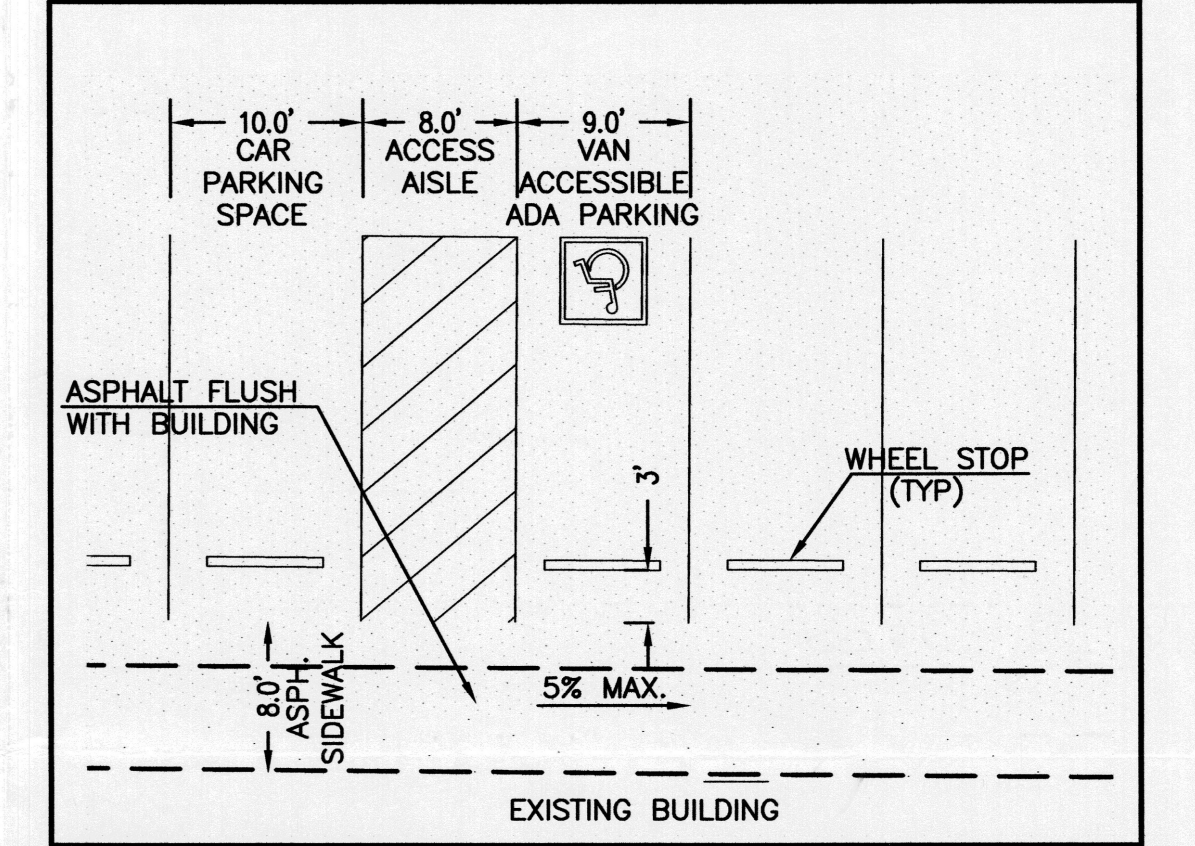
PARKING REQUIRED:  
 OFFICE 1,326 SF/200 = 7 SPACES  
 WAREHOUSE 6,056 SF/2000 = 4 SPACES  
 TOTAL REQUIRED = 11 SPACES  
 PARKING PROVIDED = 16 SPACES  
 INCLUDING 1 VAN ACCESSIBLE SPACE



VICINITY MAP  
 ZONE ATLAS K-9

**CONSTRUCTION NOTES**

1. CONSTRUCT NEW PAVEMENT PER DETAIL 11, SHEET C-501.
2. CONSTRUCT 4' CURB OPENING.
3. CONSTRUCT CONCRETE DOLLY PAD PER DETAIL 10, SHEET C-501.
4. CONSTRUCT TRASH ENCLOSURE PER DETAIL 1 SHEET A1-1.
5. CONSTRUCT BOLLARDS PER DETAIL 4, SHEET A1-1.
6. INSTALL HEADER CURB PER DETAIL 6, SHEET C-501.
7. CONSTRUCT 12'x 84' CONCRETE PAD PER DETAIL 10, SHEET C-501.
8. INSTALL VAN ACCESSIBLE ADA PARKING PER DETAILS 1, 2 & 3, SHEET C-501.
9. INSTALL PARKING STRIPING PER DETAILS 2 & 4, SHEET C-501.
10. INSTALL PRECAST BUMPER BLOCKS PER DETAIL 5, SHEET C-501.
11. INSTALL NEW CHAIN LINK SWING GATES.
12. LANDSCAPE AREA - SEE LANDSCAPE PLANS.
13. CONSTRUCT NEW FIRE HYDRANT BY JEMERATE PER



VAN ACCESSIBLE PARKING SPACE DETAIL

SCALE: 1" = 10'

PROJECT NUMBER: \_\_\_\_\_

Application Number: \_\_\_\_\_

Is an Infrastructure List required? ( ) Yes ( ) No If yes, then a set of approved DRC plans with a work order is required for any construction within Public Right-of-Way or for construction of public improvements.

**DRB SITE DEVELOPMENT PLAN APPROVAL:**

Traffic Engineering, Transportation Division \_\_\_\_\_ Date \_\_\_\_\_

ABCWUA \_\_\_\_\_ Date \_\_\_\_\_

Parks and Recreation Department \_\_\_\_\_ Date \_\_\_\_\_

City Engineer \_\_\_\_\_ Date \_\_\_\_\_

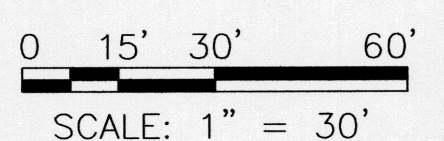
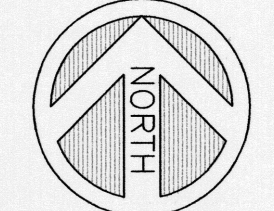
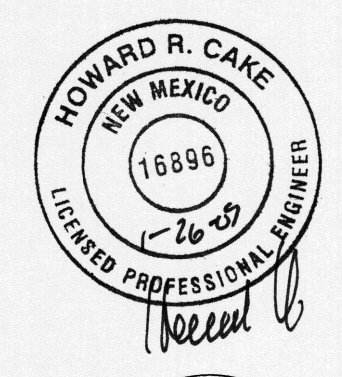
\* Environmental Health Department (conditional) \_\_\_\_\_ Date \_\_\_\_\_

*Jessie White* 761-8336 \_\_\_\_\_ Date 1-27-09  
 Solid Waste Management

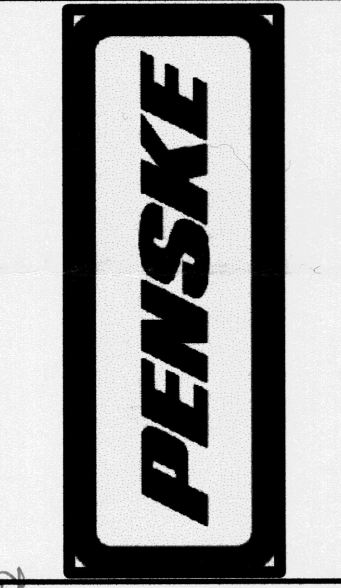
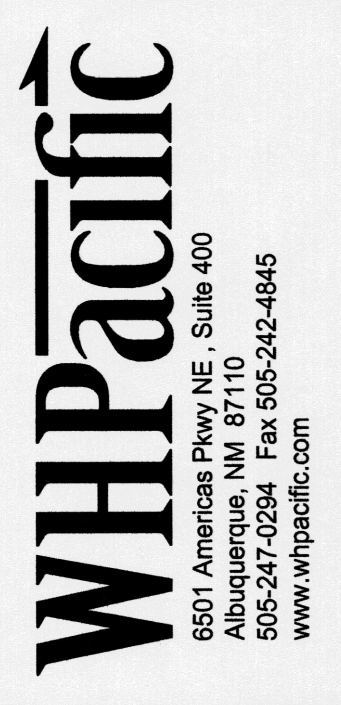
DRB Chairperson, Planning Department \_\_\_\_\_ Date \_\_\_\_\_

\*Environmental Health, if necessary

6-25-07



SCALE: 1" = 30'



REVISIONS		NO.	BY	DATE	REMARKS

SHEET INFO

DSBY	CAB	CAB	HC	HC	LAST EDIT	1/28/2008	PLOT DATE	8:41 AM	SUBMITTAL
------	-----	-----	----	----	-----------	-----------	-----------	---------	-----------

SHEET NUMBER: C-101

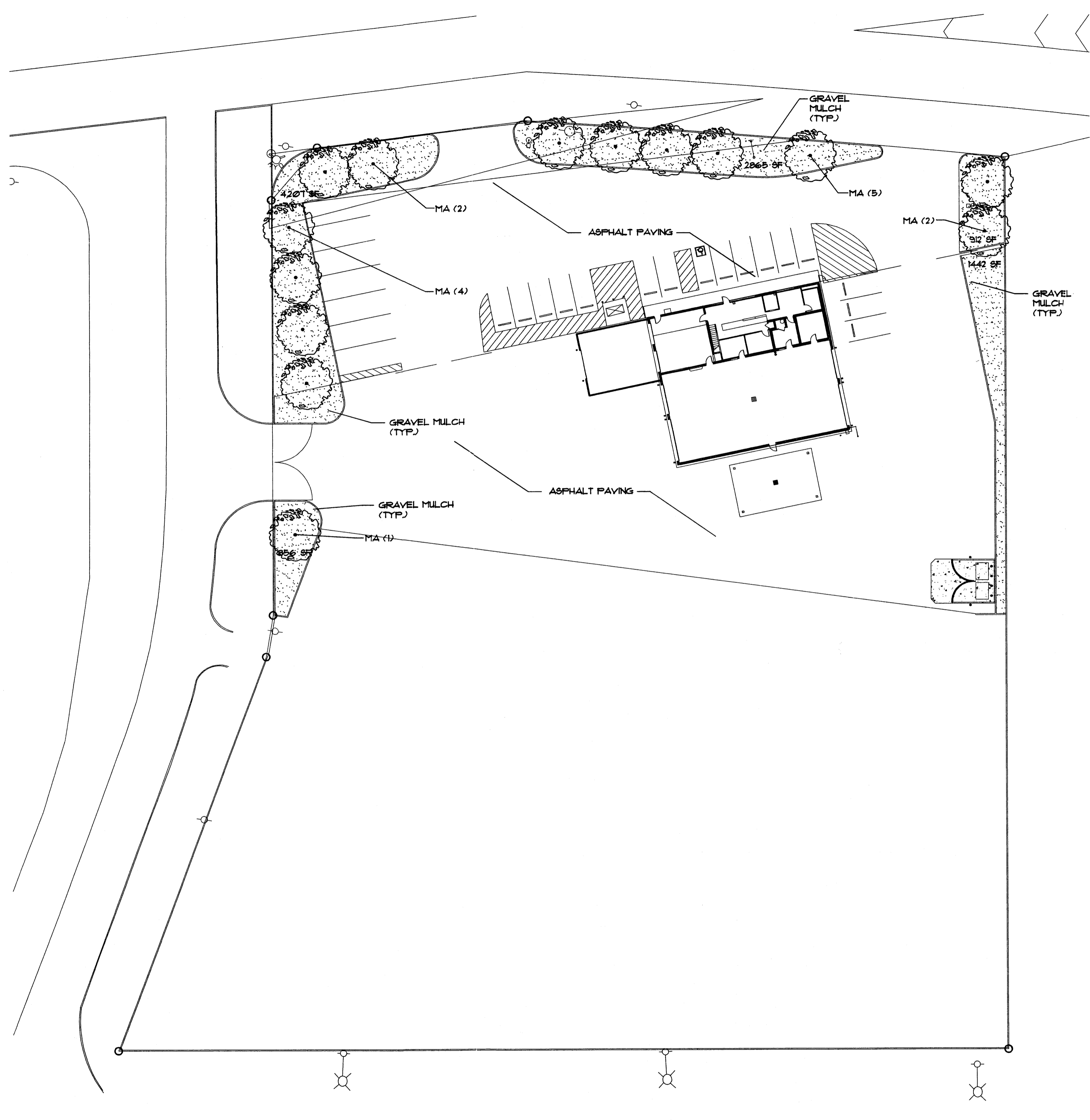
SCALE: 1" = 30'

SITE PLAN

PROJECT NUMBER: 021126

DRAWING FILE NAME: SITE PLAN

FACILITY UPGRADES FOR PENSKE TRUCK LEASING  
 9200 W. CENTRAL S.W.  
 ALBUQUERQUE, NM



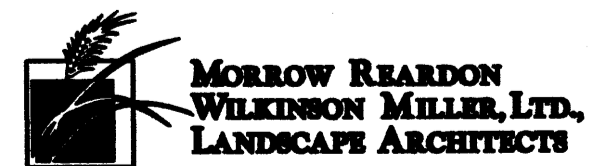
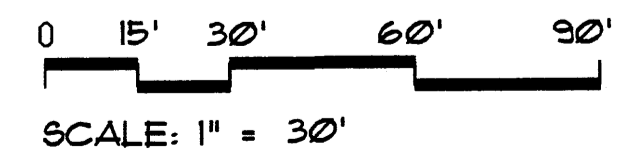
PLANT SCHEDULE					
KEY	COMMON NAME	BOTANICAL NAME	QUANTITY	SIZE	REMARKS
<b>TREES</b>					
MA	Modesto Ash	Fraxinus velutina 'Modesto'	14	2" cal, 12'-14' ht.	30" Box

- PLANTING NOTES**
- IN CASE OF DISCREPANCY IN PLANT QUANTITIES SHOWN ON THE PLANT LIST AND THOSE SHOWN ON THE PLANTING PLAN, THE QUANTITIES SHOWN ON THE PLAN SHALL GOVERN. CONTRACTOR SHALL VERIFY ALL QUANTITIES PRIOR TO BID AND INSTALLATION. NO ADDITIONAL PAYMENT WILL BE MADE FOR ANY DISCREPANCIES IN QUANTITIES BETWEEN THE PLANTING PLAN AND THE PLANT LIST.
  - GRAVEL MULCH SHALL BE A 3" DEPTH OF 3/4" "SANTA FE BROWN" OR EQUAL GRAVEL MULCH WITH FILTER FABRIC UNDER. GRAVEL MULCH SHALL BE INSTALLED THROUGHOUT PLANTING BEDS AND PERIMETER AREAS AS SHOWN ON PLAN. FILTER FABRIC SHALL BE MIN. 4 OZ WOVEN NEEDLE PUNCHED POLYPROPYLENE (DEWITT OR EQUIVALENT). OVERLAP ENDS 3", TURN DOWN EDGES 6".
  - THE CONTRACTOR SHALL PRUNE LOWER BRANCHES OF DECIDUOUS TREES TO 6 FEET ABOVE FINISH GRADE.
  - IF THERE IS A DISCREPANCY IN THE FIELD OR NURSERY BETWEEN THE CONTAINER SIZE CALLED OUT UNDER "REMARKS" AND HEIGHT & SPREAD CALLED OUT UNDER "SIZE", THE SPECIFIED PLANT MUST MEET HEIGHT & SPREAD REQUIREMENTS SPECIFIED UNDER "SIZE", EVEN IF THE LARGER CONTAINER SIZE IS REQUIRED TO MEET THESE SPECIFICATIONS, AT NO ADDITIONAL COST TO THE OWNER.
  - TREES SHALL BE PLANTED PER DETAIL A/L3.

**LANDSCAPE REQUIREMENTS**

PER SECTION 14-16-3-10 (E) OF THE CITY OF ALBUQUERQUE LANDSCAPE REGULATIONS, NOT LESS THAN 15% OF THE NET LOT AREA SHALL BE LANDSCAPE. NET LOT SIZE = 64811 SQUARE FEET. LANDSCAPE REQUIREMENT, THEREFORE, IS 9722 SQUARE FEET.

10221 SQUARE FEET OF LANDSCAPING ARE PROVIDED IN THIS PLAN.



**K/G ARCHITECTS**  
 7585 E. REDFIELD RD.  
 SUITE 102  
 SCOTTSDALE, ARIZONA 85260  
 (480) 443-3705 - TEL.

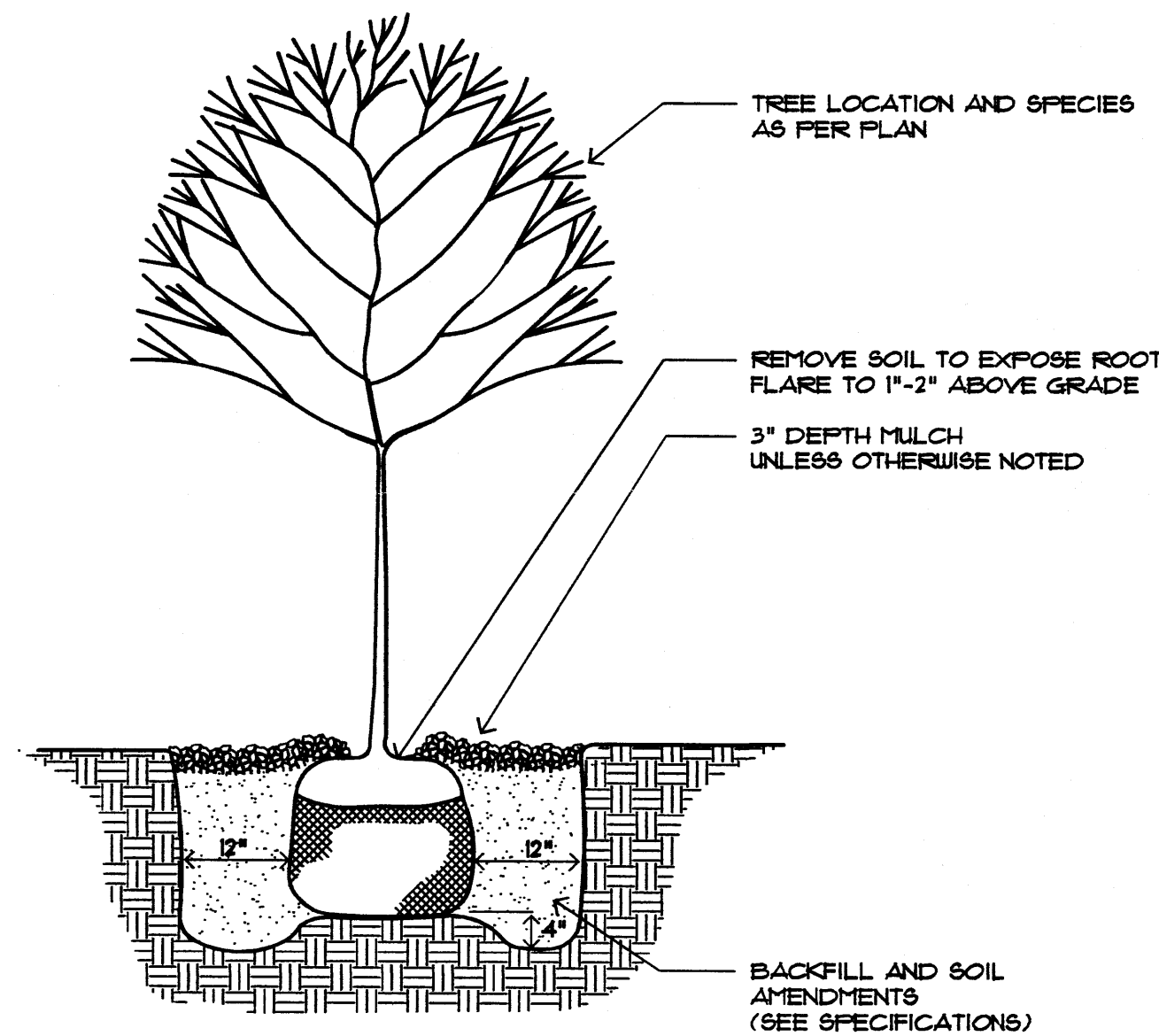
DRAWN BY: AD  
 CHECKED BY: BHM  
 PROJECT NO: 6408

**PENSKE**

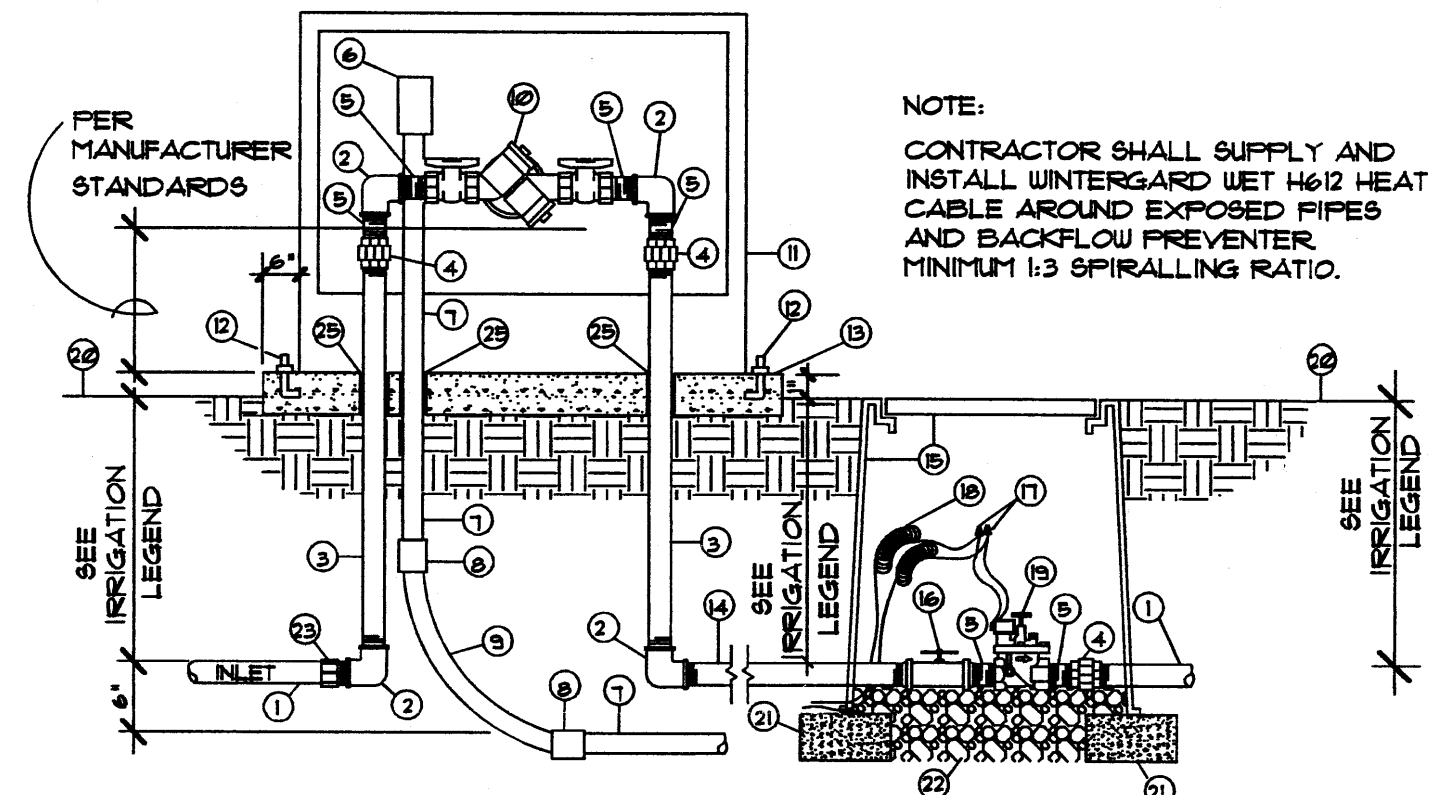
FACILITY UPGRADES  
 FOR  
 PENSKE TRUCK LEASING  
 9200 W. CENTRAL AVE. S.W.  
 ALBUQUERQUE, NM

REVISIONS	DATE	ISSUED FOR:
		PERMIT
PLANTING PLAN		
SHEET NO:		<b>L2</b>

P:\Drawings\6408\6408-0000\6408-0000.dwg, 1/23/2009 1:35:55 PM, wmm

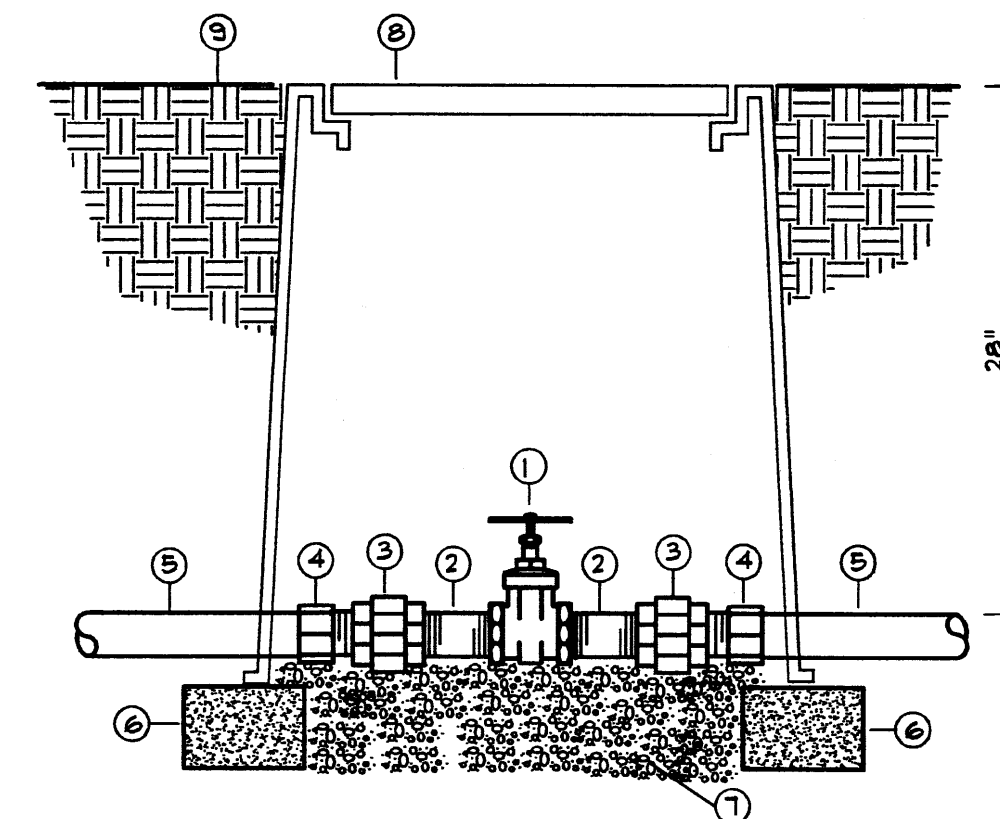


**A**  
**L3** TREE PLANTING DETAIL  
MCD-0002 110795 N.T.S.



- 1 PVC MAINLINE (SEE LEGEND)
- 2 GALVANIZED ELBOW
- 3 GALVANIZED NIPPLE, LENGTH AS REQUIRED
- 4 GALVANIZED UNION
- 5 GALVANIZED NIPPLE - 3" LENGTH
- 6 JUNCTION BOX FOR HEAT TAPE
- 7 RIGID STEEL CONDUIT
- 8 WATERTIGHT CONNECTOR
- 9 RIGID STEEL SWEEP ELL
- 10 REDUCED PRESSURE BACKFLOW PREVENTER, SEE IRRIGATION LEGEND
- 11 INSULATED ENCLOSURE (SEE LEGEND)
- 12 1/2"x6" ANCHOR BOLTS, FOUR PER BOX
- 13 3000 PSI CONCRETE PAD, 6" THICK WITH TOOLED EDGES ON 5% COMPACTED SUBGRADE
- 14 GALVANIZED NIPPLE - 3/8" LENGTH
- 15 CARSON PRODUCTS, INC. 1324 VALVE BOX W/1324-3B BOLT DOWN FLUSH COVER AND EXTENSIONS AS REQUIRED. COLOR-TAN
- 16 SPEARS TRUE UNION SCH. 80 PVC BALL VALVE
- 17 WATERPROOF WIRE SPLICE
- 18 3/8" WIRE LOOPS
- 19 MASTER VALVE, SEE IRRIGATION LEGEND
- 20 FINISH GRADE
- 21 SOLID CMU BLOCK, FOUR PER BOX
- 22 6" DEPTH 1" ROUND GRAVEL
- 23 SCH. 40 PVC MALE ADAPTER
- 24 MAIN LINE ELL, 90 DEGREE
- 25 PVC SLEEVE

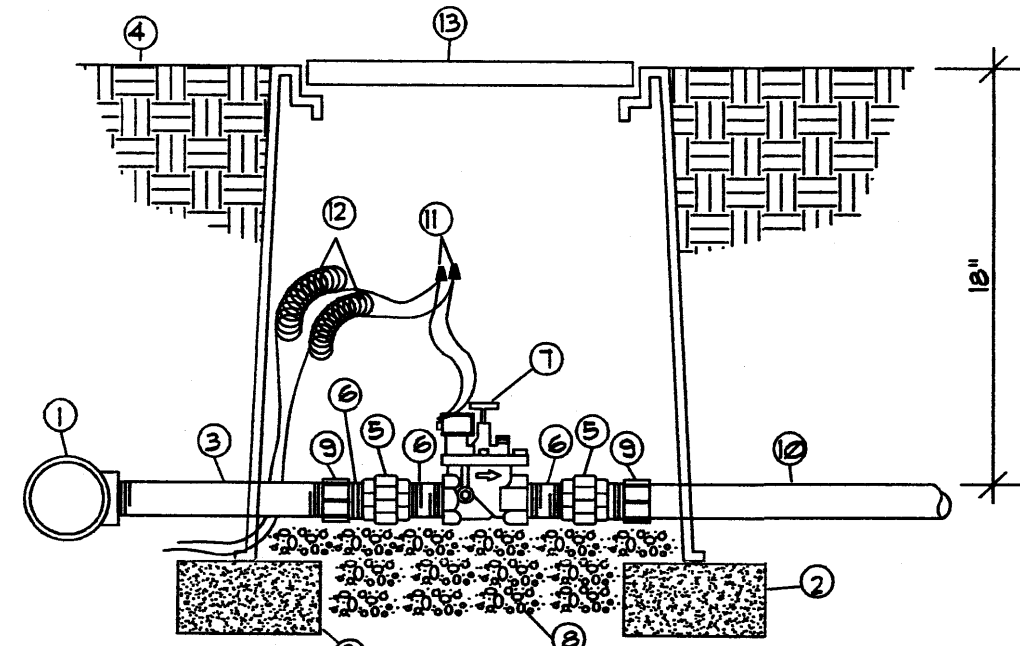
**B**  
**L3** BACKFLOW PREVENTER & MASTER VALVE ASSEMBLY  
N.T.S.



- 1 MANUAL VALVE (SEE LEGEND)
- 2 SCH. 80 PVC THREADED NIPPLE - 3" LENGTH
- 3 SPEARS SCH. 80 PVC THREADED UNION
- 4 SCH. 40 PVC MALE ADAPTER
- 5 MAINLINE PIPE (SEE LEGEND)
- 6 CMU BLOCK - 4 PER VALVE BOX
- 7 6" DEPTH 1" ROUND GRAVEL
- 8 CARSON 1130-18 VALVE BOX W/ BOLT DOWN COVER AND 8" EXTENSIONS AS REQUIRED. VALVE BOX SHALL BE INSTALLED FLUSH WITH TOP OF GRAVEL MULCH.
- 9 TOP OF GRAVEL MULCH

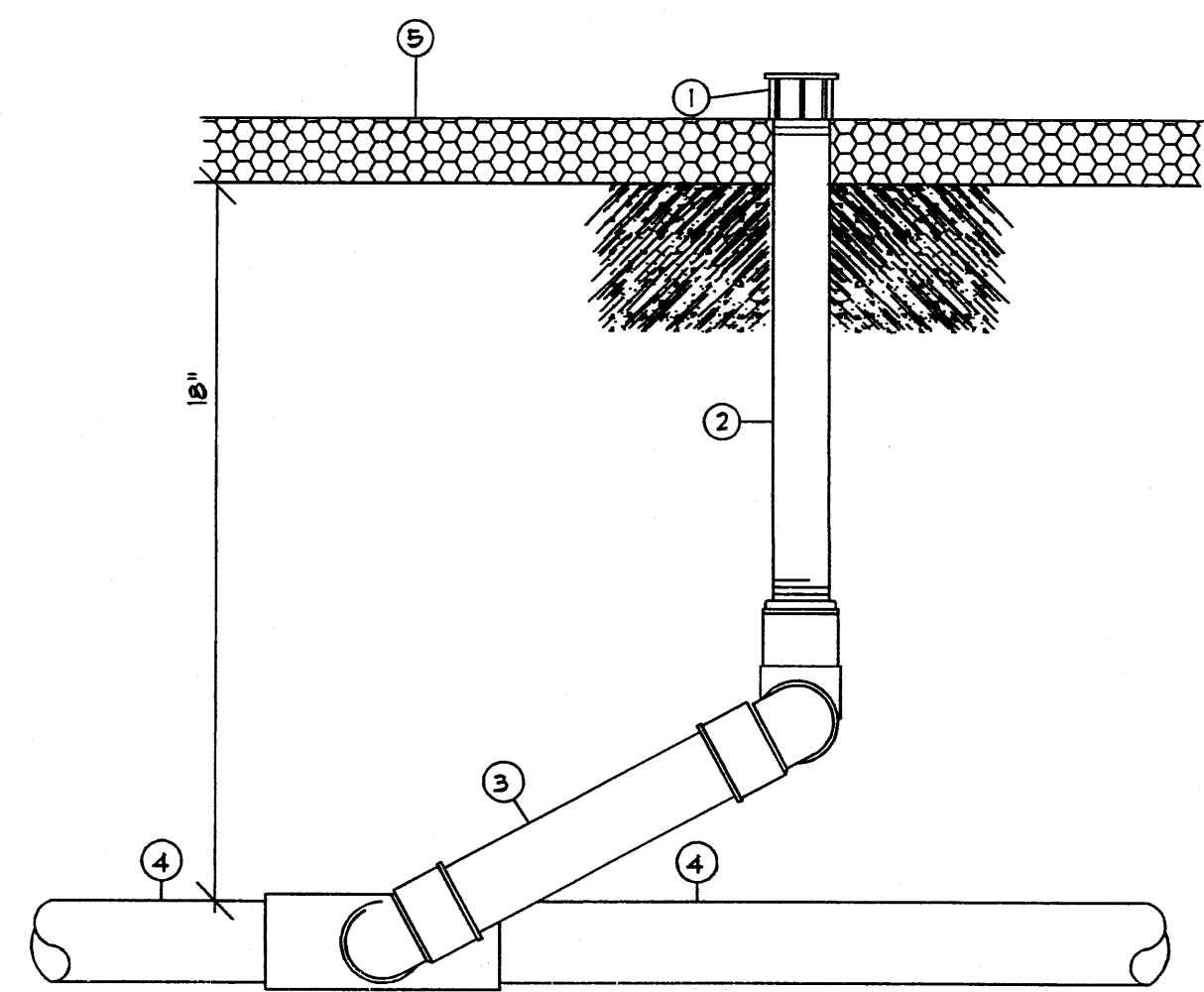
**C**  
**L3** GATE VALVE ASSEMBLY  
MCD-0053 092303 N.T.S.

NOTE: CONTRACTOR SHALL INSTALL ONE AUTOMATIC VALVE ASSEMBLY PER VALVE BOX.



- 1 MAINLINE SERVICE TEE
- 2 SOLID CMU BLOCK (FOUR PER BOX)
- 3 SCH. 80 PVC NIPPLE, LENGTH AS REQUIRED
- 4 TOP OF GRAVEL MULCH
- 5 SPEARS SCH. 80 PVC UNION
- 6 SCH. 80 PVC NIPPLE - 3" LENGTH
- 7 AUTOMATIC VALVE (SEE LEGEND)
- 8 6" DEPTH 1" ROUND GRAVEL
- 9 SCH. 40 PVC MALE ADAPTER
- 10 LATERAL PIPING (SEE LEGEND)
- 11 WATERPROOF WIRE CONNECTOR
- 12 26" WIRE EXPANSION LOOPS
- 13 CARSON 1130-18 VALVE BOX VALVE BOX W/ BOLT DOWN FLUSH COVER W/ ONE 8" EXTENSION. VALVE BOX SHALL BE INSTALLED FLUSH WITH TOP OF GRAVEL.

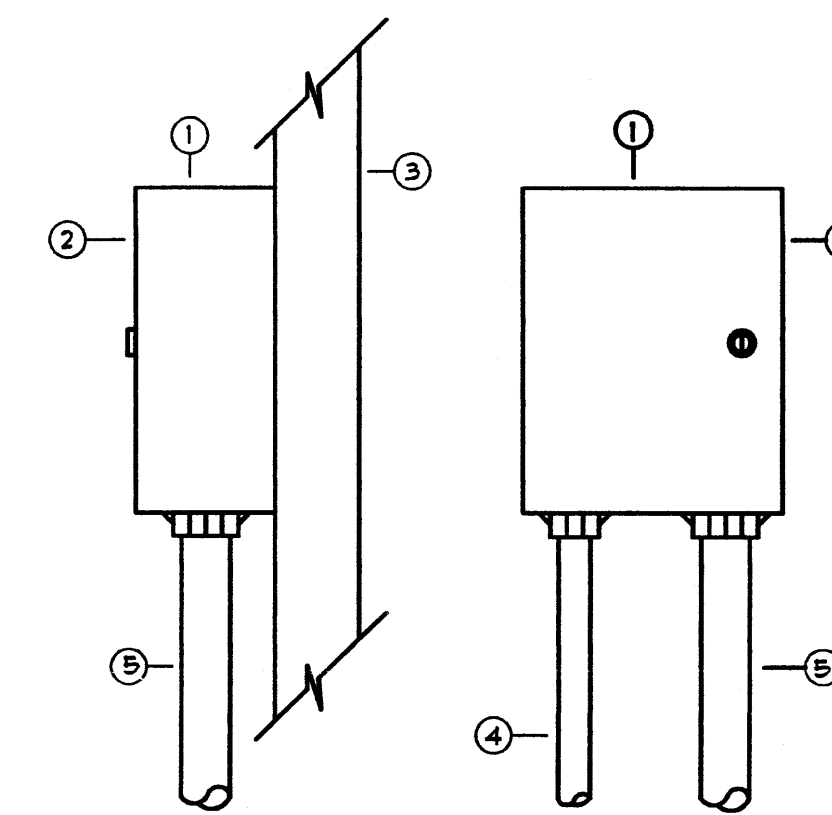
**D**  
**L3** AUTOMATIC VALVE ASSEMBLY  
MCD-0013 110795 N.T.S.



- 1 PRESSURE COMPENSATING BUBBLER (SEE LEGEND)
- 2 1/2" SCH. 80 PVC THREADED NIPPLE, LENGTH AS REQUIRED
- 3 LASCO 1/2" UNITIZED SWIVEL JOINT #7522-212
- 4 PVC LATERAL PIPING
- 5 TOP OF MULCH, SEE PLANTING NOTES FOR DEPTH OF MULCH

**GENERAL NOTES:**  
1. BUBBLER SHALL BE LOCATED AS NOTED ON IRRIGATION PLAN. BUBBLER SHOULD BE NO FURTHER THAN 12" FROM ROOT BALL OF TREE AND 6" FROM ROOT BALL OF SHRUB.

**E**  
**L3** BUBBLER ASSEMBLY  
MCD-0008 031891 N.T.S.



- 1 AUTOMATIC CONTROLLER (SEE LEGEND)
  - 2 EYE LEVEL
  - 3 WALL
  - 4 1/2" VOLT WIRE CONDUIT
  - 5 24 VOLT WIRE CONDUIT
- NOTES:  
CONTROLLER SHALL BE MOUNTED SECURELY TO WALL USING APPROPRIATE FASTENERS FOR WALL TYPE.  
ALL EXPOSED CONDUIT SHALL BE EMT, OR EQUAL AND APPROVED BY LOCAL CODES.  
ALL CONDUIT CONNECTIONS SHALL BE MADE USING WATERTIGHT CONNECTORS.

**F**  
**L3** WALL MOUNT AUTOMATIC CONTROLLER  
MCD-0016 110795 N.T.S.

**K/G**  
ARCHITECTS  
7585 E. REDFIELD RD.  
SUITE 102  
SCOTTSDALE, ARIZONA 85260  
(480) 443-3705 - TEL.

DRAWN BY:  
AD

CHECKED BY:  
BHM

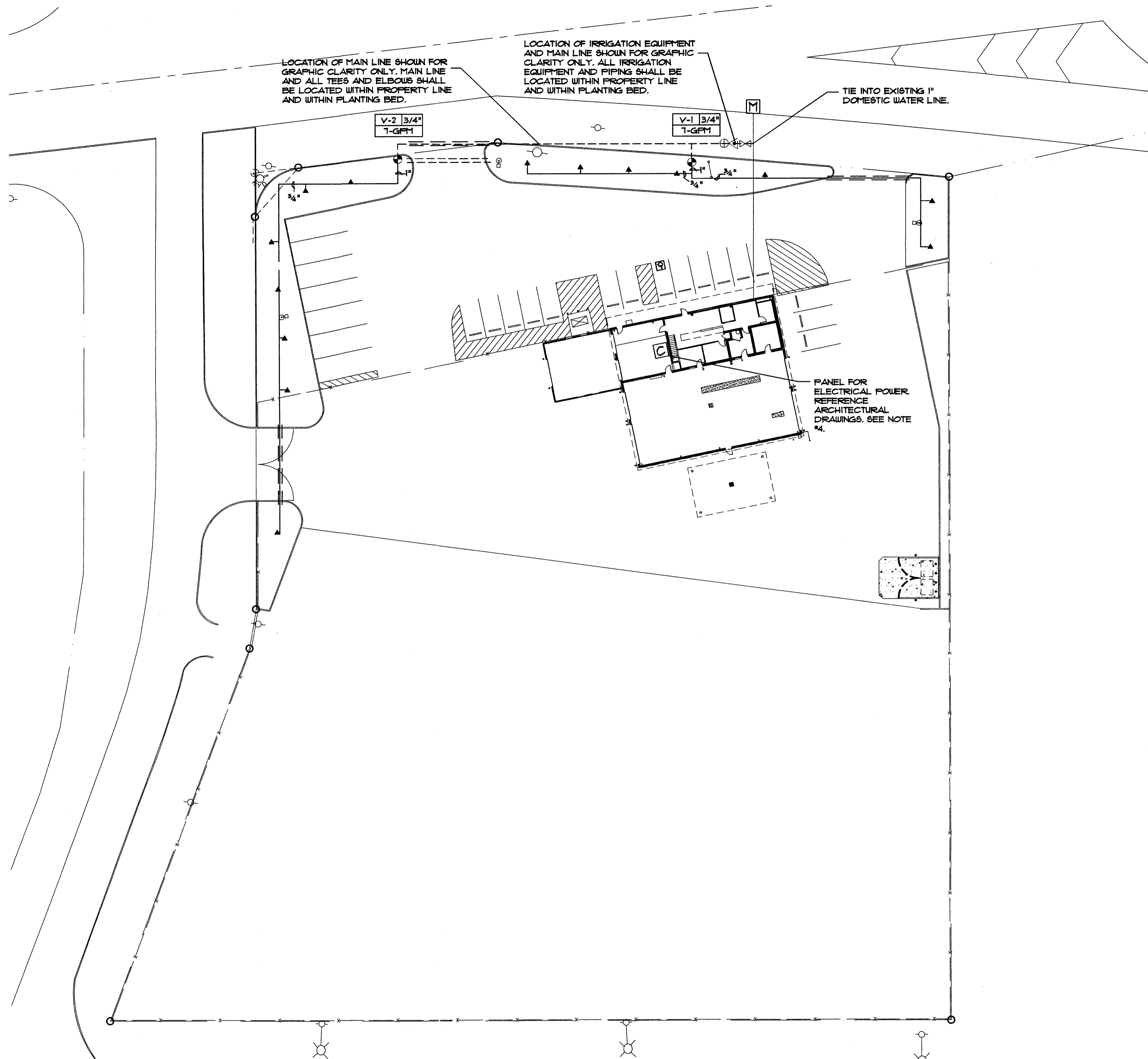
PROJECT NO:  
6408

STATE OF NEW MEXICO  
BAKER H. MORROW  
REGISTERED LANDSCAPE ARCHITECT  
10.29.08

**PENSKE**

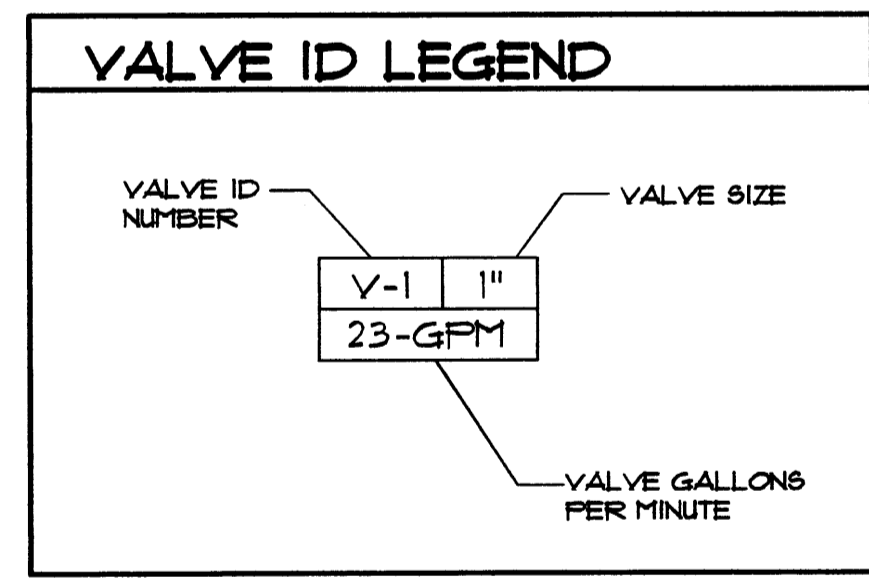
FACILITY UPGRADES  
FOR  
PENSKE TRUCK LEASING  
9200 W. CENTRAL AVE. S.W.  
ALBUQUERQUE, NM

REVISIONS		LANDSCAPE DETAILS
DATE		
DATE:	ISSUED FOR:	L3
10-24-08	PERMIT	
SHEET NO:		



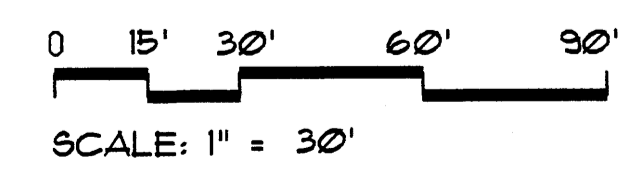
IRRIGATION LEGEND		
[M]	EXISTING WATER METER. LOCATION IS SCHEMATIC. CONTRACTOR SHALL VERIFY LOCATION. SEE SITE UTILITY PLANS FOR RELATED INFORMATION.	
=====	MAIN LINE AND LATERAL SLEEVE PIPING, CLASS 200, SDR-21, BELL-END, SOLVENT WELD PVC, SEE NOTE NO. 2 BELOW.	
-----	24-VOLT IRRIGATION WIRE SLEEVE PIPING, CLASS 200, SDR-21, BELL-END, SOLVENT WELD PVC, SEE NOTE NO. 2 BELOW.	
---	EXISTING 1" DOMESTIC WATER LINE TO BUILDING. LOCATION IS APPROXIMATE. CONTRACTOR SHALL VERIFY LOCATION AND SIZE.	
----	IRRIGATION MAIN LINE, SCH. 40, BELL-END, SOLVENT WELD PVC, SIZE 1". DEPTH OF BURY: 28" FOR CONTINUOUS PRESSURE IRRIGATION MAIN AND 18" FOR NON-CONTINUOUS.	
---	LATERAL PIPING, SCH. 40, BELL END, SOLVENT WELD PVC. SIZE AS SHOWN ON PLAN. DEPTH OF BURY, 18". PIPE CONVEYING LESS THAN 5 GPM SHALL BE 3/4".	
⊗	POINT OF CONNECTION, SPEARS SCH. 80 PVC BALL VALVE WITH UNIONS, SIZE 1". SEE DETAIL C/L3.	
⊗	BACKFLOW PREVENTER AND MASTER VALVE ASSEMBLY, FEBCO B620, 1" REDUCED PRESSURE PRINCIPLE BACKFLOW PREVENTER WITH BALL VALVES IN HOT BOX MODEL NO. 2 HEATED AND INSULATED BACKFLOW ENCLOSURE AND WEATHERMATIC 1024-FCR PLASTIC BODY 24-VOLT MASTER VALVE, SIZE 1". SEE DETAIL B/L3.	
⊗	REMOTE CONTROL VALVE ASSEMBLY, WEATHERMATIC 1024-FCR PLASTIC BODY 24-VOLT AUTOMATIC VALVE, SIZE AS SHOWN ON PLAN. SEE DETAIL D/L3.	
	PRESSURE COMPENSATING BUBBLER ASSEMBLIES, RAIN BIRD 1400 SERIES, AS FOLLOWS: SEE DETAIL E/L3	
▲	1404	120      30
[C]	IRRIGATION CONTROLLER, RAINBIRD ESP-81C, EIGHT STATION WALL MOUNT CONTROLLER. SEE DETAIL F/L3.	

- IRRIGATION NOTES**
- CONTRACTOR SHALL FURNISH ALL LABOR, MATERIALS AND EQUIPMENT NECESSARY TO CONSTRUCT PROPOSED IRRIGATION SYSTEM IN ACCORDANCE WITH PLANS, WRITTEN SPECIFICATIONS AND DETAILS.
  - THE CONTRACTOR SHALL COORDINATE THE INSTALLATION OF SLEEVE PIPING WITH ALL TRADES TO INSURE THAT SLEEVES ARE INSTALLED PROPERLY PRIOR TO INSTALLATION OF CURB AND GUTTER, ASPHALT PAVING, SIDEWALKS, CONCRETE PADS, ETC.
  - THIS SYSTEM WAS DESIGNED AT A MINIMUM STATIC PRESSURE OF 80 PSI AT THE POINT OF CONNECTION. CONTRACTOR SHALL VERIFY ACTUAL PSI AND DELIVER RESULTS TO LANDSCAPE ARCHITECT PRIOR TO CONSTRUCTION. IN THE EVENT THE ACTUAL PSI IS LESS THAN 80 PSI THE CONTRACTOR SHALL RECEIVE DIRECTION FROM LANDSCAPE ARCHITECT REGARDING DESIGN MODIFICATIONS IF NECESSARY.
  - THE CONTRACTOR SHALL PROVIDE TWO 120-VOLT, 20 AMP CIRCUITS FROM ELECTRICAL PANEL TO IRRIGATION CONTROLLER AND BACKFLOW PREVENTER ENCLOSURE (ONE TO EACH). ALL WORK AND MATERIALS SHALL MEET LOCAL CODES AND THE NATIONAL ELECTRIC CODE (N.E.C.).



**COMPLIANCE**

THIS IRRIGATION SYSTEM HAS BEEN DESIGNED TO BE IN COMPLIANCE WITH THE WATER CONSERVATION LANDSCAPING AND WASTE WATER ORDINANCE (ORDINANCE 18-1995) ENACTED BY THE CITY OF ALBUQUERQUE.



**K/G ARCHITECTS**  
 7585 E. REDFIELD RD.  
 SUITE 102  
 SCOTTSDALE, ARIZONA 85260  
 (480) 443-3705 - TEL.

DRAWN BY: AD  
 CHECKED BY: BHM  
 PROJECT NO: 6408

**PENSKE**

**FACILITY UPGRADES FOR**  
**PENSKE TRUCK LEASING**  
 9200 W. CENTRAL AVE. S.W.  
 ALBUQUERQUE, NM

REVISIONS	DATE	ISSUED FOR:
		PERMIT
IRRIGATION PLAN		
SHEET NO:		<b>L1</b>

P:\11441-2008\6408-0001\6408-0001.dwg, 1/23/2008 11:51:15 PM, vmm

DRAWN BY:  
EMB  
CHECKED BY:  
PG  
PROJECT NO:  
08113

**PENSKE**

FACILITY UPGRADES  
FOR  
PENSKE TRUCK LEASING  
9200 W. CENTRAL S.W.  
ALBUQUERQUE, NM

PROPOSED SITE PLAN

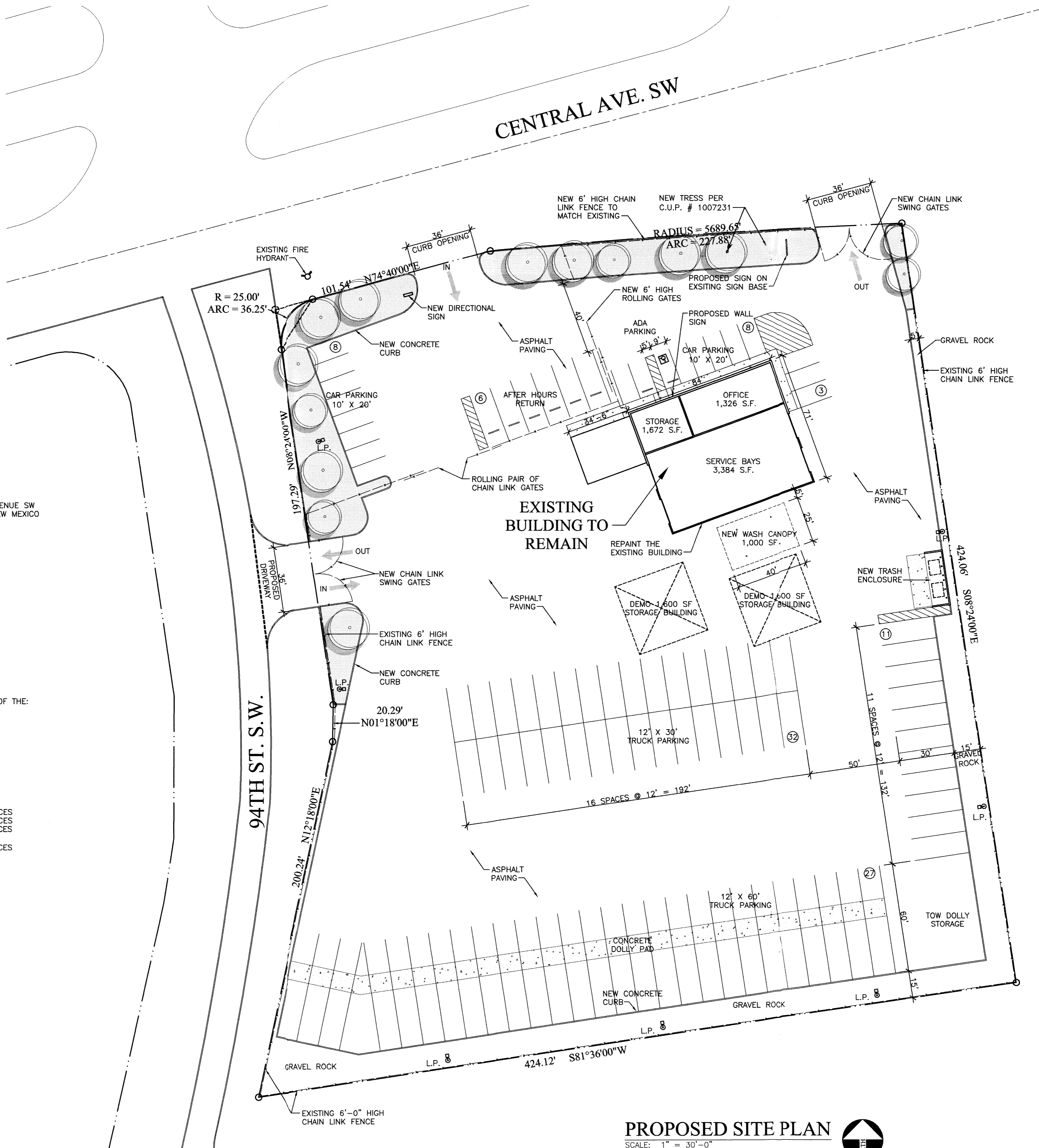
REVISIONS

DATE

DATE: 8-22-08  
ISSUED FOR: REVIEW

SHEET NO:

**A1-0**



**PROJECT DATA**

ADDRESS: 9200 CENTRAL AVENUE SW  
ALBUQUERQUE, NEW MEXICO  
NET SITE LEASE AREA SHOWN: ±158,900 S.F.  
3.64 ACRES  
ZONING: SU-2

**BUILDING AREA**

EXISTING BUILDING AREA = 9,582 SF  
BUILDING AREA TO BE REMOVED = - 3,200 SF  
WASH BAY AREA (PROPOSED) = + 1,000 SF  
TOTAL BUILDING AREA = 7,382 SF  
NET REDUCTION OF 2,200 S.F.

**BUILDING CODES**

THE PROJECT WILL COMPLY WITH THE PROVISIONS OF THE:  
2006 IBC  
2006 UPC  
2006 UMC  
2008 NEC  
2006 IEBC

**PARKING CALCULATIONS**

PARKING REQUIRED:  
OFFICE 1,326 S.F./200 = 7 SPACES  
WAREHOUSE 6,056 S.F./2,000 = 4 SPACES  
TOTAL REQUIRED: = 11 SPACES  
PARKING PROVIDED: = 19 SPACES  
INCLUDING 1 ACCESSIBLE SPACE

**LEGEND**

- 6'-0" HIGH CHAIN LINK FENCE WITH BARBED WIRE
- L.P. NEW LIGHT POLE
- PROPERTY LINE
- EXISTING FIRE HYDRANT
- LANDSCAPE AREA PER APPROVED C.U.P. CASE #1007231 (AREA SHOWN: 8,981 S.F.)

**PROPOSED SITE PLAN**

SCALE: 1" = 30'-0"

