

NOT FOR CONSTRUCTION

UPTOWN SHOPS - TARGET @
UPTOWN

REVISIONS

- ▲
- ▲
- ▲
- ▲
- ▲
- ▲

DRAWN BY JP
REVIEWED BY SL
DATE 20151119
PROJECT NO: 15-0102

DRAWING NAME
**EXTERIOR
ELEVATIONS**

SHEET NO
07 of 11

GENERAL SHEET NOTES

A. PROVIDE BLOCKING AS REQUIRED FOR SIGNAGE.

REFERENCE KEYNOTES

SHEET KEYNOTES

1. EIFS SYSTEM, COLOR #1
2. EIFS SYSTEM, COLOR #2
3. CULTURED STONE VENEER TO MATCH TARGET
4. CORRUGATED METAL PANEL TO MATCH TARGET
5. CLEAR ANODIZED STOREFRONT
6. FULL LITE STOREFRONT DOOR, CLEAR ANODIZED
7. PRE-MANUFACTURED COPING, COLOR TO MATCH ADJACENT FINISH
8. SIGNAGE (UNDER SEPARATE SUBMITTAL)
9. HOLLOW METAL DOOR, PAINTED TO MATCH ADJACENT FINISH
10. PERFORATED METAL CANOPY, WHITE
11. STRUCTURAL BEAM, PAINT TO MATCH STORE FRONT SYSTEM
12. LIGHTING FIXTURE, TYPE 1
13. LIGHTING FIXTURE, TYPE 2
14. CONCRETE BENCH
15. CAST ALUMINUM CHANNEL LETTERS, LED BACK-LIT, CLEAR ANODIZED/ COLOR TO BE DETERMINED.
16. PAINTED STEEL CANOPY.


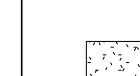

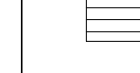
SIGNAGE LEGEND

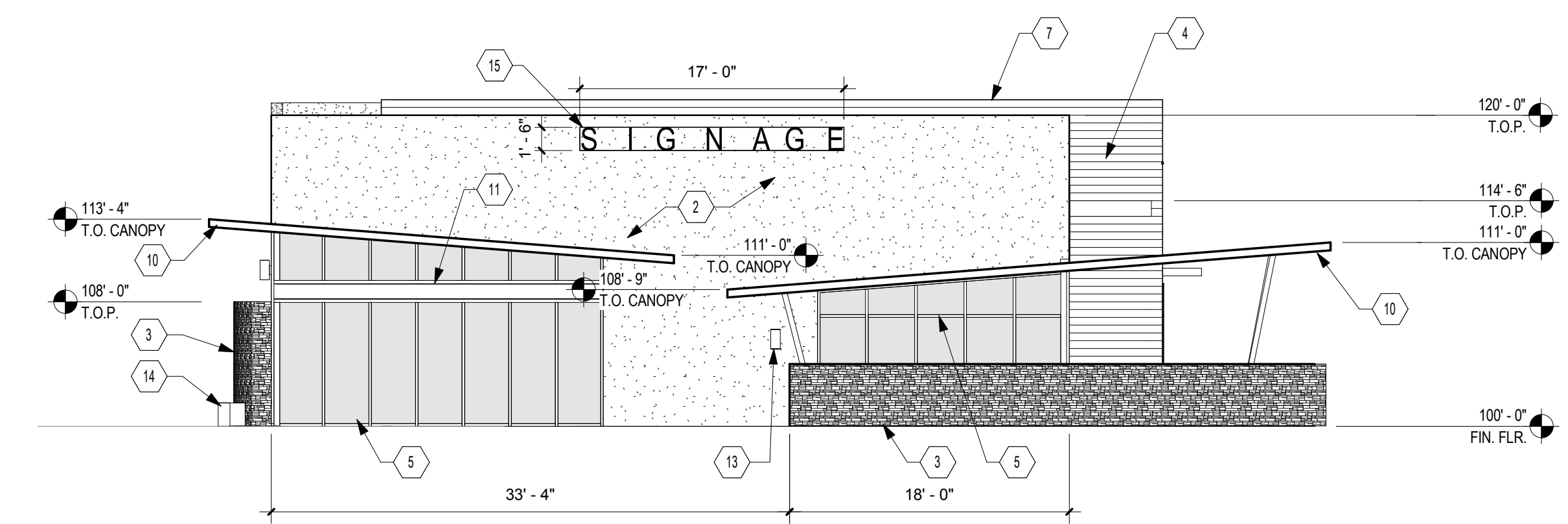
| BUILDING SIGNAGE | | | |
|---------------------------------|----------------|--|---------------|
| TOTAL EXISTING APPROVED SIGNAGE | | | |
| PROPOSED ELEVATION | ELEVATION SIZE | MAX. SIGN AREA (25% or 30% on Louisiana) | PROPOSED AREA |
| EAST | 1199 SF | 299.75 SF | 25.5 SF |
| NORTH | 2056 SF | 514 SF | 51 SF |
| WEST | 1199 SF | 299.75 SF | 25.5 SF |
| SOUTH | 2056 SF | 514 SF | 51 SF |

ALLOWED SIGN AREA PER SIGN - 200 SF PER SIGN, AN ADDITIONAL 20 SF PER 125 FEET OF STREET FRONTAGE ALONG A SINGLE STREET. SIGN AREA ON LOUISIANA BLVD. NOT TO EXCEED 250 SF. SIGN AREA TO EXCEED 250 SF.

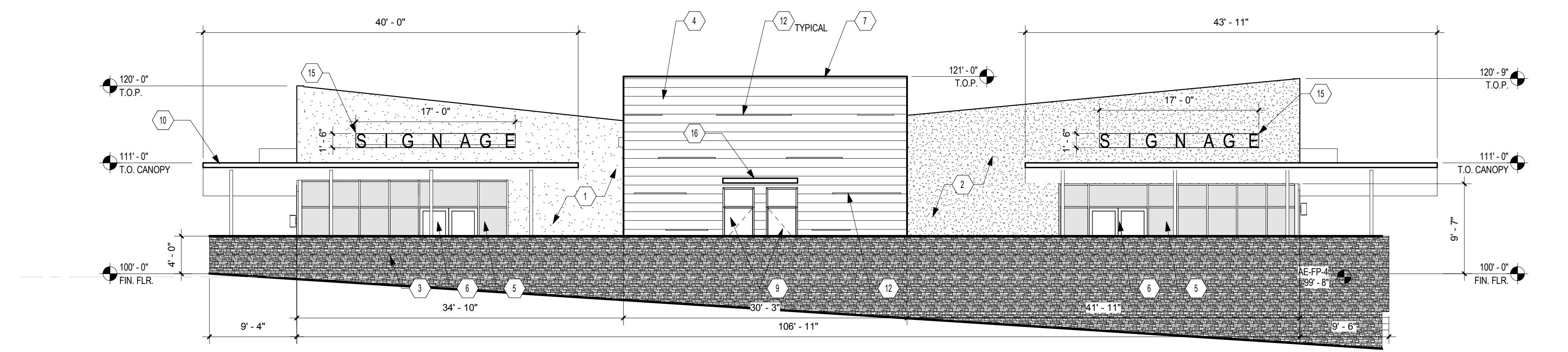
SIGNAGE - INTERNALLY ILLUMINATED SIGN. BOX SIGN NOT ALLOWED, EXCEPT FOR LOGOS.

MATERIAL LEGEND

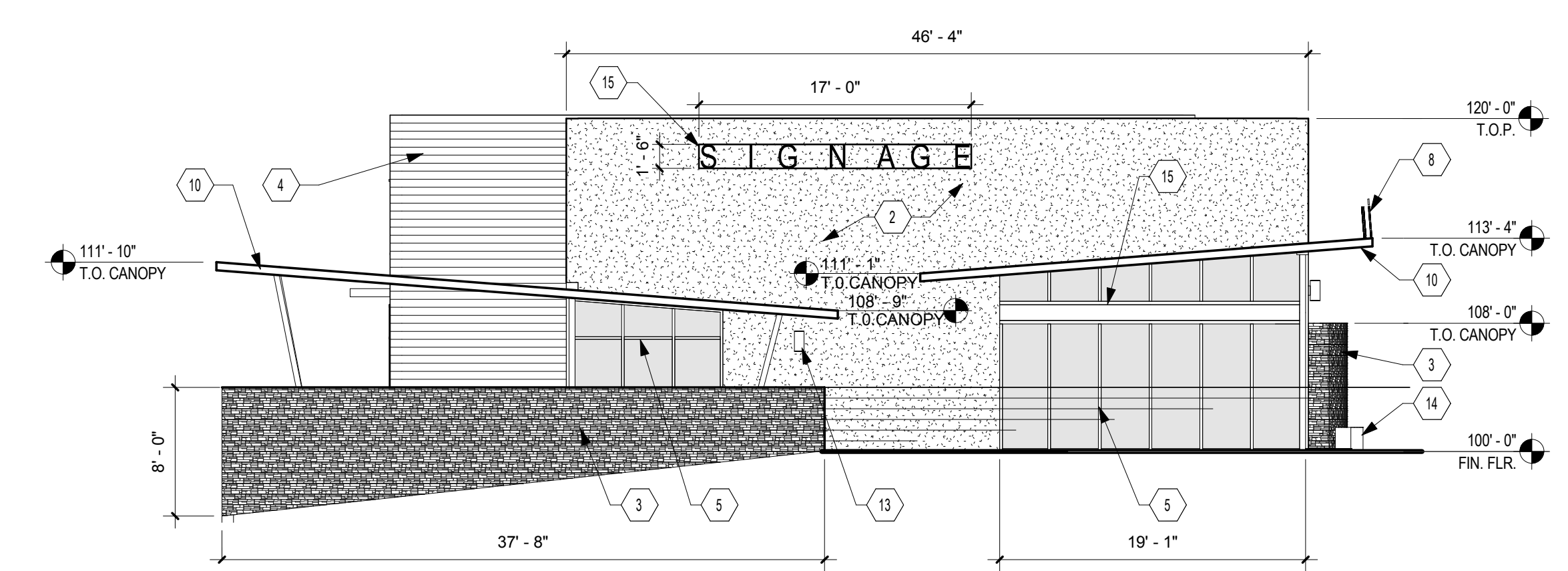
-  EIFS-1 - SW6108 / LIGHT BROWN TO MATCH EXISTING TARGET
-  EIFS-2 - SW6111 / DARK BROWN TO MATCH EXISTING TARGET
-  MP-1 - CORRUGATED METAL PANEL TO MATCH TARGET
-  CULTURED STONE VENEER TO MATCH TARGET



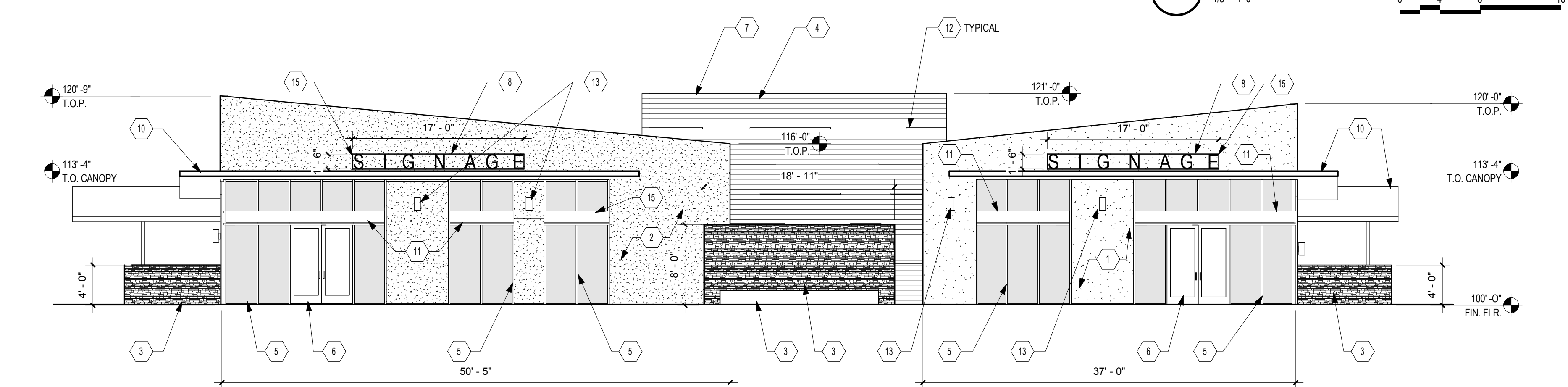
D5 EAST ELEVATION
1/8" = 1'-0" 0' 4' 8' 16'



C5 NORTH ELEVATION
1/8" = 1'-0" 0' 4' 8' 16'



B5 WEST ELEVATION
1/8" = 1'-0" 0' 4' 8' 16'



A5 SOUTH ELEVATION
1/8" = 1'-0" 0' 4' 8' 16'