

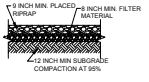
RIPRAP NOTES:

ALL RIPRAP SHALL CONSIST OF 3/4" TO 2" ROUND STONE #7 OF FINEST MATERIAL AVAILABLE.

RIPRAP SHALL BE PLACED TO MEET THE FOLLOWING REQUIREMENTS:

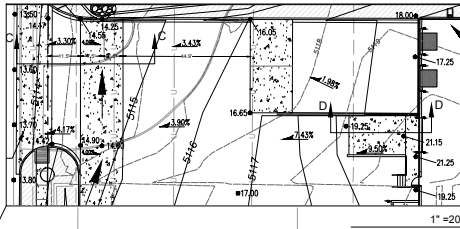
- 9 INCH MIN. PLACED RIPRAP
- 4 INCH MIN. FILTER MATERIAL
- 42 INCH MIN SUBGRADE COMPACTION AT 95%

RIPRAP CROSS SECTION

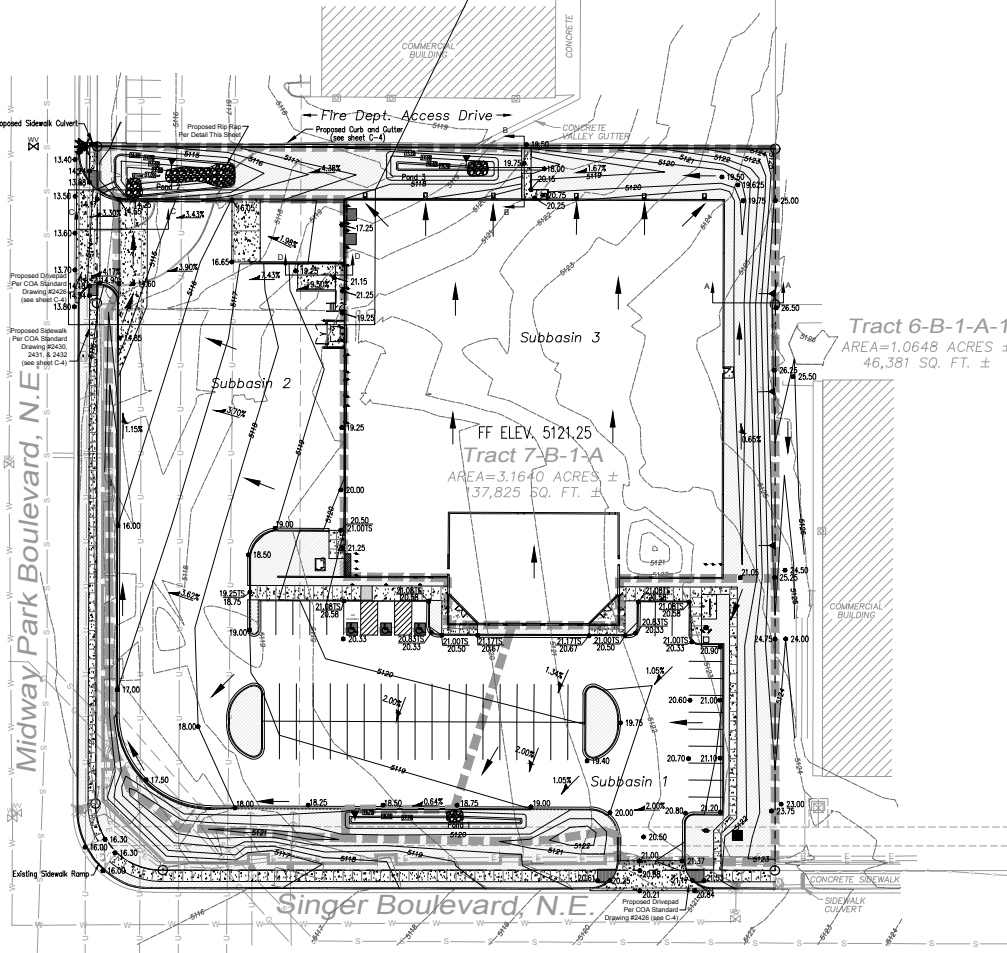


ALL RIPRAP SHALL BE PLACED TO MEET THE FOLLOWING REQUIREMENTS:

- 9 INCH MIN. PLACED RIPRAP
- 4 INCH MIN. FILTER MATERIAL
- 42 INCH MIN SUBGRADE COMPACTION AT 95%



Tract 8-B-1
AREA=1.7502 ACRES ±
76,237 SQ. FT. ±

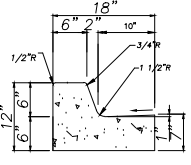


Tract 6-B-1-A-1
AREA=1.0648 ACRES ±
46,381 SQ. FT. ±

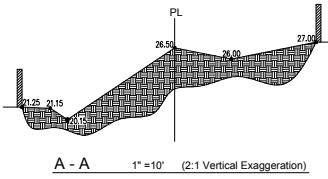
Tract 7-B-1-A
AREA=3.1640 ACRES ±
37,825 SQ. FT. ±

GENERAL NOTES:

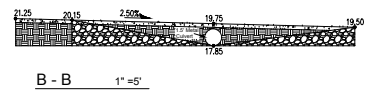
- CURBS & GUTTERS TO BE CONSTRUCTED OF P.C.C.
- FOR STANDARD C & G, PROVIDE CONTRACTION JOINT @ 8' O.C. MAX., ALSO PROVIDE 1/2" EXP. JOINT @ 8' O.C. MAX. AT CURB RETURNS & AT EACH SIDE OF DRIVEWAY & ADJACENT TO WALLS & BUILDINGS.
- EDGES NOT SPEC. DIMENSIONED SHALL BE EDGED WITH A 3/8" EDGING TOOL.
- STD. C & G SHALL BE USED FOR NEW CONSTR. UNLESS OTHERWISE APPROVED BY THE ENGINEER.
- REMOVE & REPLACE 12" WIDE STRIP OF PAVEMENT BEYOND LIP OF GUTTER WHEN CONSTRUCTING C & G ADJACENT TO EXIST. A.C. PAVEMENT.
- STD. C & G REQUIRE FULL FORM ON ALL FACES EXCEPT WITH PRIOR APPROVAL OF ENGINEER.



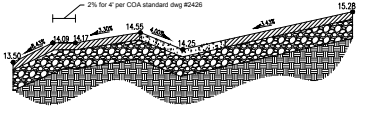
ON-SITE STD. CURB AND GUTTER
NTS



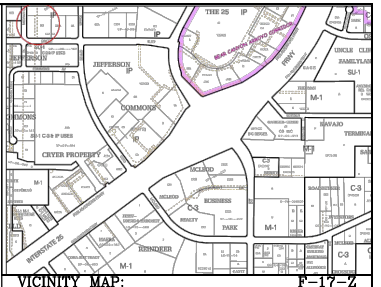
A - A 1"=10' (2:1 Vertical Exaggeration)



B - B 1"=5'



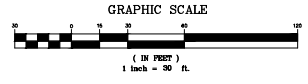
C - C 1"=10' (5:1 Vertical Exaggeration)



VICINITY MAP:

Legend

- UTILITY POLE
- GUY WIRE
- TRANSFORMER
- ELECTRIC BOX
- WATER METER
- ROOF DRAIN
- WATER VALVE
- FIRE HYDRANT
- IRRIGATION CONTROL VALVE
- SIDEWALK CULVERT
- EDGE OF ASPHALT
- BLUESTAKE ELECTRIC LINE
- BLUESTAKE GAS LINE
- OVERHEAD UTILITY LINE
- BLUESTAKE WATER LINE
- SUBBASIN BOUNDARY
- PROPERTY LINE
- PROPOSED POND ELEVATIONS
- EXISTING CONTOURS
- PROPOSED CONTOURS
- LANDSCAPING HATCH



GRAPHIC SCALE
(IN FEET)
1 inch = 30 ft.

<p>ENGINEER'S SEAL HUGH W. FLOYD NEW MEXICO LICENSE # 12472 REGISTERED PROFESSIONAL ENGINEER</p>	GRADING		COMMISSION No. 15-121 DATE: 09-2015 REV: _____ BY: _____ SHEET: C-2 2 OF 4
	JOB # 019-15-200 FLOYD DEVELOPMENT SERVICES, LLC DEVELOPMENT, ENGINEERING, & WATERSHED CONSULTING 518 RINEHURST RD SE, SUITE 101 RIO RANCHO, NM 87124 HUGH@DEVELOP.NM.COM 505-365-5187		

A NEW OFFICE / WAREHOUSE for

ALBUQUERQUE, NEW MEXICO 87109
3515 SINGER BLVD., N.E.