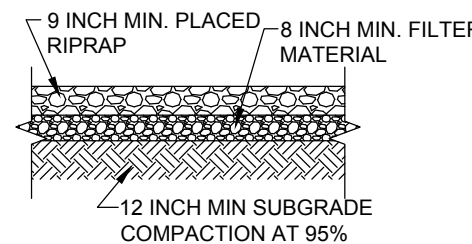


RIPRAP NOTES:

RIPRAP SHALL CONSIST OF 9" OF RIP-RAP OVER 8" OF FILTER MATERIAL.

RIP-RAP SHALL CONSIST OF CRUSHED ROCK MEETING THE FOLLOWING GRADATION, OR ENGINEER APPROVED EQUIVALENT.

MAX. DIMENSION	% SMALLER
3"	50-60
3/4"	35-42
3/8"	10



RIPRAP CROSS SECTION
NTS

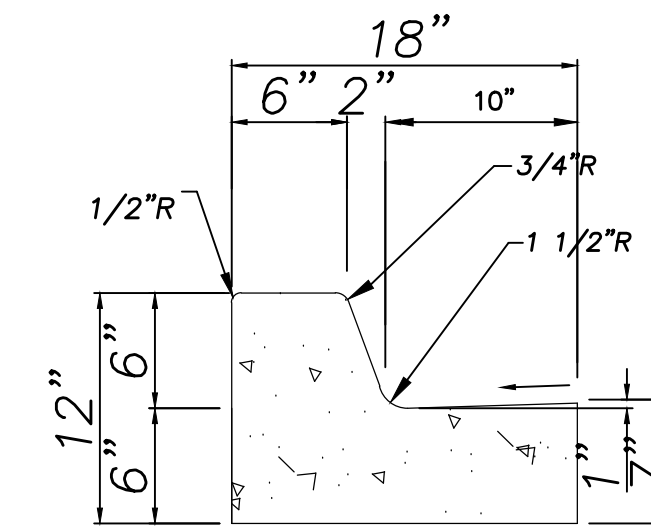
FILTER MATERIAL SHALL CONSIST OF CRUSHED BASALT ROCK MEETING THE FOLLOWING GRADATION, OR ENGINEER APPROVED EQUIVALENT.

U.S. STANDARD	PASSING	PERCENT
NO. 10	45-65	
NO. 20	25-45	
NO. 40	0-20	
NO. 60	0-5	

FILTER MATERIAL SHALL BE PLACED UNDER THE RIP-RAP CHANNEL PAVEMENT AS SHOWN HEREON. THE SUBGRADES SHALL BE PROCESSED TO A 1/2" MIN. DEPTH AND COMPACTED TO 95% MIN. RELATIVE DENSITY PER ASTM D 1557. THE FILTER MATERIAL SHALL BE TAMPED AND SHAPED TO FORM A SMOOTH, EVEN, AND FIRM FOUNDATION FOR THE OVERLYING RIP-RAP. THE CONTRACTOR'S OPERATIONS AND METHODS OF PLACING SHALL PREVENT SEGREGATION OF THE MATERIALS. THE FILTER MATERIAL SHALL BE PLACED AND TAMPED IN THE VOIDS OF THE RIP-RAP.

GENERAL NOTES:

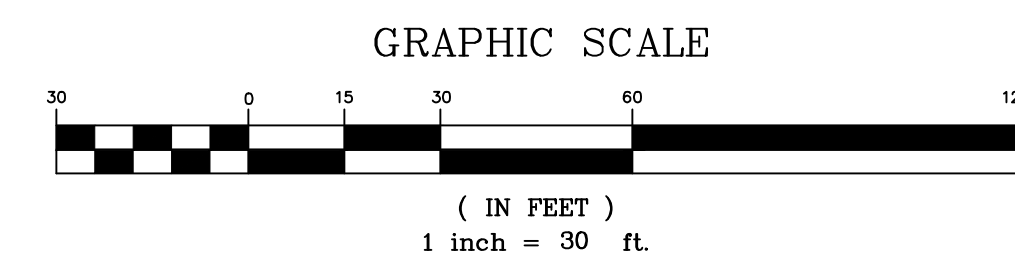
- CURBS & GUTTERS TO BE CONSTRUCTED OF P.C.C.
- FOR STANDARD C. & G. PROVIDE CONTRACTION JOINTS 6" O.C. MAX., ALSO PROVIDE 1/2" EXP. JOINTS 48" O.C. MAX. AT CURB RETURNS & AT EACH SIDE OF DRIVEWAY & ADJACENT TO WALLS & BUILDINGS
- EDGES NOT SPEC. DIMENSIONED SHALL BE EDGED WITH A 3/8" EDGING TOOL
- STD. C. & G. SHALL BE USED FOR NEW CONSTR. UNLESS OTHERWISE APPROVED BY THE ENGINEER.
- REMOVE & REPLACE 12" WIDE STRIP OF PAVEMENT BEYOND LIP OF GUTTER WHEN CONSTRUCTING C. & G. ADJACENT TO EXIST. A.C. PAVEMENT.
- STD. C. & G. REQUIRE FULL FORM ON ALL FACES EXCEPT WITH PRIOR APPROVAL OF ENGINEER.



ON-SITE STD. CURB AND GUTTER
NTS

Legend

- UTILITY POLE
- GUY WIRE
- TRANSFORMER
- ELECTRIC BOX
- WATER METER
- ROOF DRAIN
- WATER VALVE
- FIRE HYDRANT
- IRRIGATION CONTROL VALVE
- SIDEWALK CULVERT
- EDGE OF ASPHALT
- BLUESTAKE ELECTRIC LINE
- BLUESTAKE GAS LINE
- OVERHEAD UTILITY LINE
- BLUESTAKE WATER LINE
- SUBBASIN BOUNDARY
- PROPERTY LINE
- PROPOSED POND ELEVATIONS
- EXISTING CONTOURS
- PROPOSED CONTOURS
- LANDSCAPING HATCH



GRAPHIC SCALE

(IN FEET)
1 inch = 30 ft.

GRADING

JOB # 019-15-200

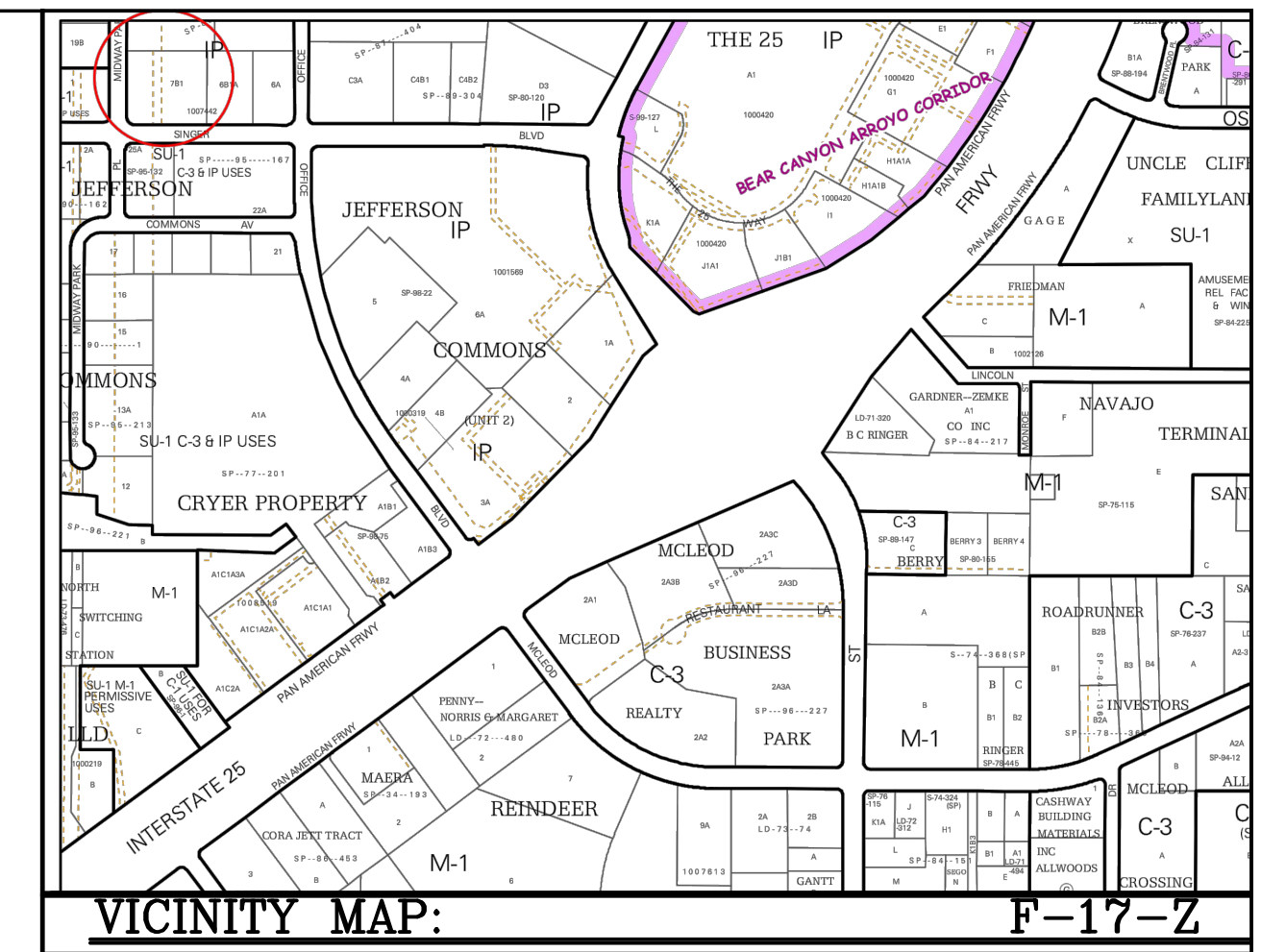
FLOYD DEVELOPMENT SERVICES, LLC
DEVELOPMENT, ENGINEERING, & WATERSHED
CONSULTING
918 PINEHURST RD SE, SUITE 101
RIO RANCHO, NM 87124
HUGH@DEVELOPNM.COM
505-366-4187

ENGINEER'S SEAL

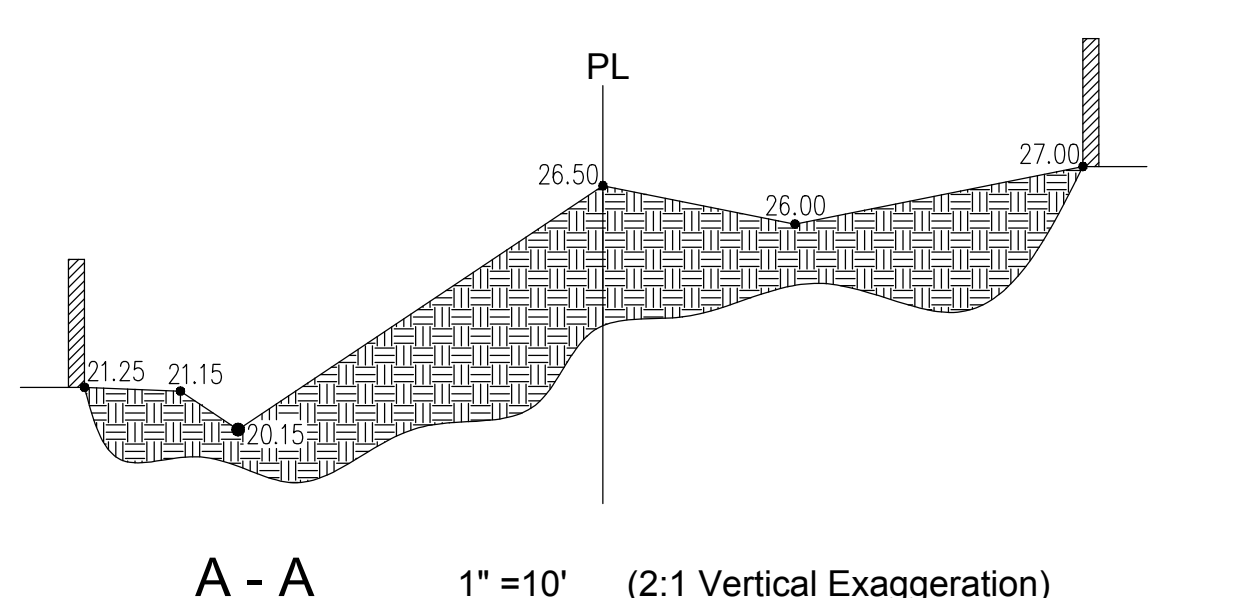
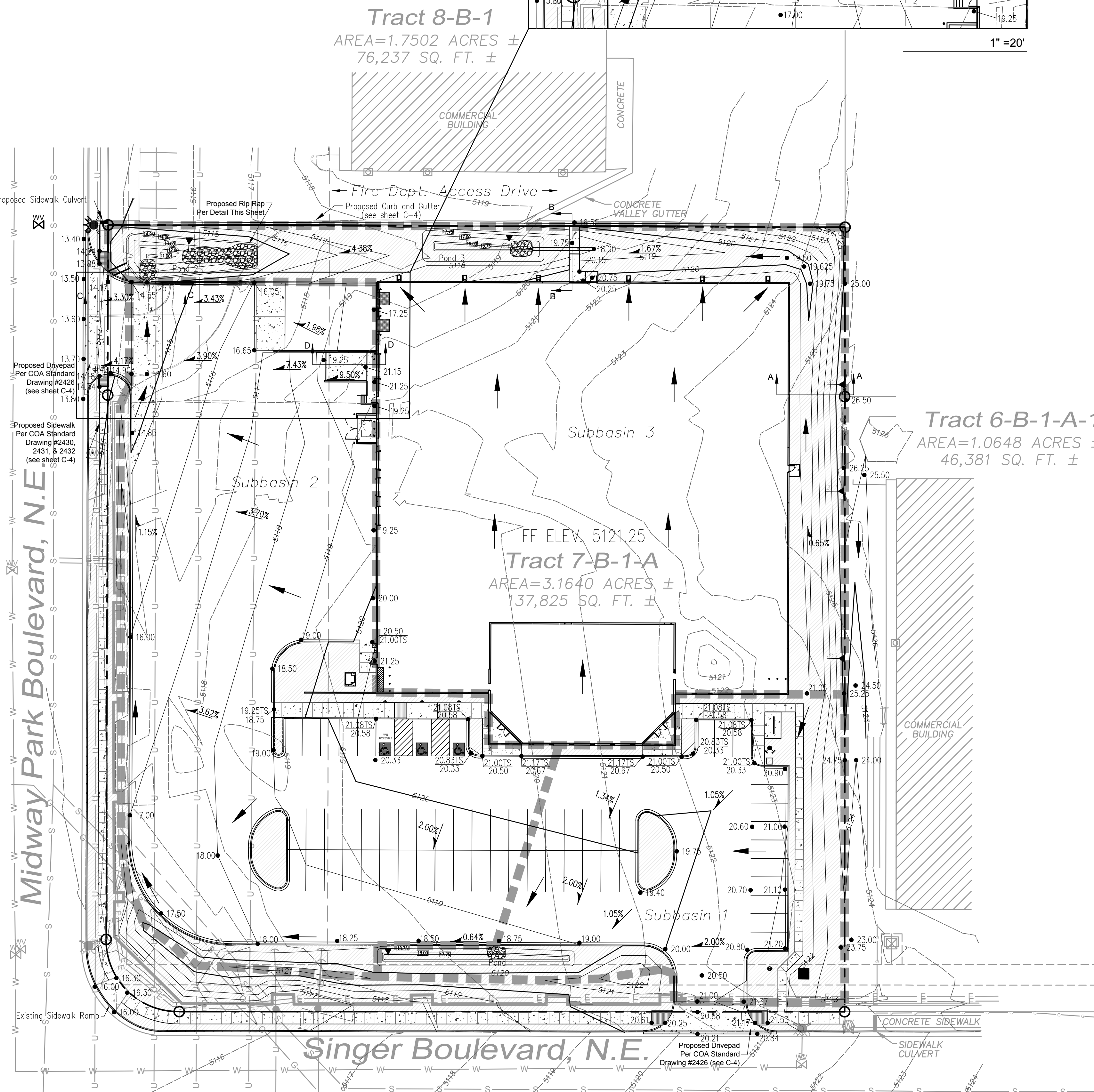
HUGH W. FLOYD
P.E. 16633

A NEW OFFICE / WAREHOUSE for

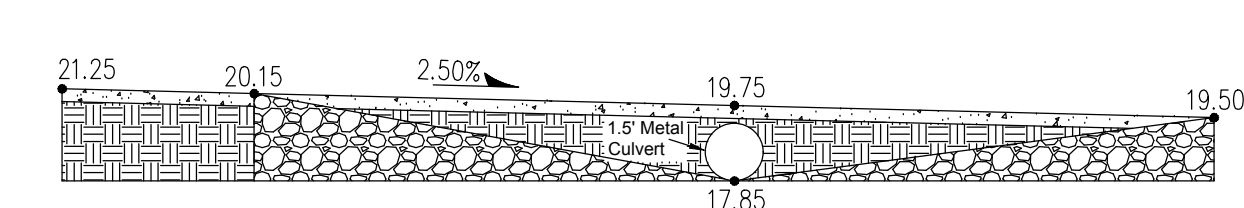
ALBUQUERQUE, NEW MEXICO 87109
3815 SINGER BLVD., N.E.



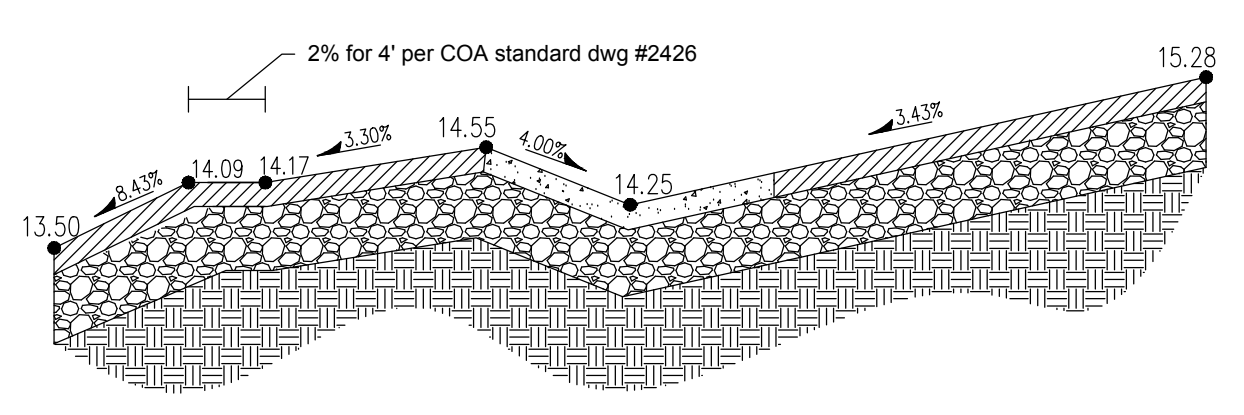
VICINITY MAP:



A - A 1" = 10' (2:1 Vertical Exaggeration)



B - B 1" = 5'



C - C 1" = 10' (5:1 Vertical Exaggeration)

ISSUED FOR
BUILDING PERMIT

OMISSION No. 15-121
DATE 09-2015
REV: -
SHEET: C-2
2 OF 4