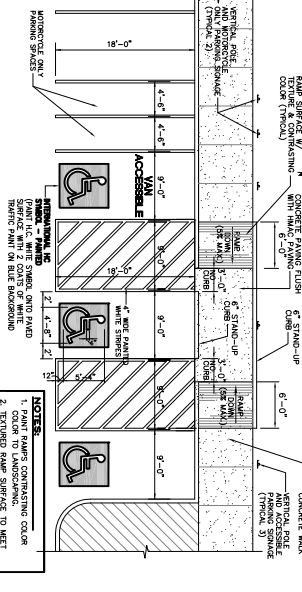




**VICINITY MAP**  
NOT TO SCALE

**LEGAL DESCRIPTION**  
DIVISION OF LAND AND MINERAL RIGHTS  
BERNTO COUNTY, NEW MEXICO

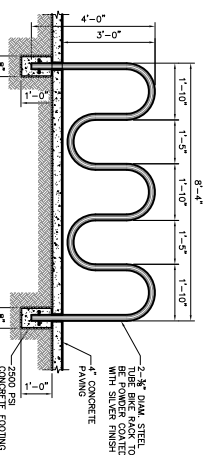


**2 ENLARGED ACCESSIBLE PARKING PLAN**  
SCALE: 1/8" = 1'-0"

**SIGN NOTES**

1. ALL LETTERS ARE 1.5 SERIES "C".
  2. TOP HALF OF SIGN SHALL HAVE A RETROREFLECTED BLUE BACKGROUND WITH WHITE RETROREFLECTED LETTERS AND SYMBOLS.
  3. BOTTOM HALF OF SIGN SHALL HAVE RETROREFLECTED WHITE BACKGROUND WITH CONTRASTING COLOR LETTERS AND SYMBOLS.
  4. DIRECTIONAL ARROWS ON SIGN AS APPLICABLE.
  5. VERIFY MOUNTING TYPE AND LOCATION WITH ARCHITECT.
  6. DESIGN LETTERING AND ACCESSIBLE PARKING SYMBOLS TO BE ACCESSIBLE. SIGN SHALL BE 5'-0" ABOVE FINISH GRADE.
- ALL DESIGNED PARKING SPACES MUST HAVE TYPICAL SIGNAGE AND MARKING HAVE MOUNTING DIMENSIONS FOR CITY REQUIREMENTS.**

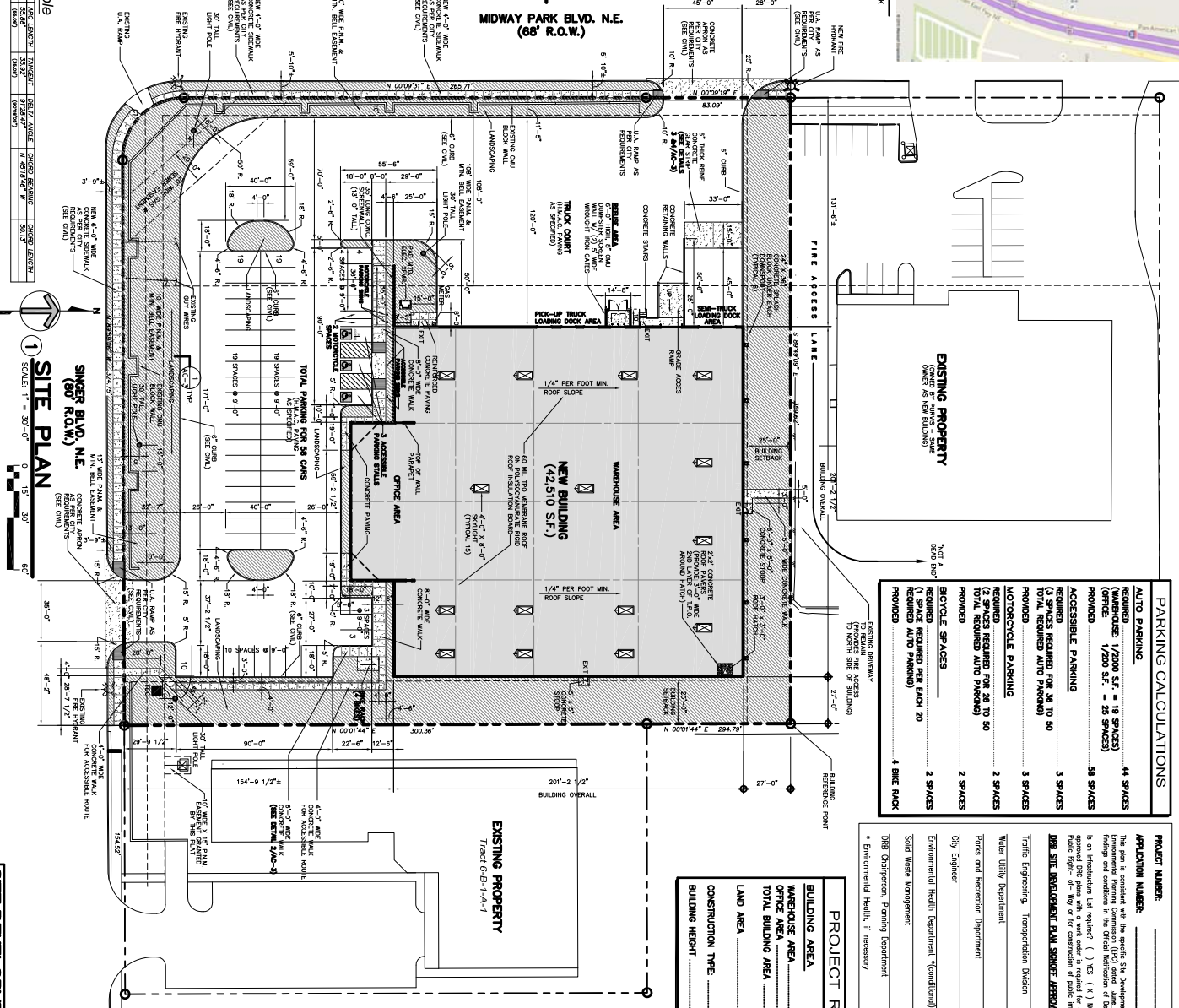
**3 ACCESSIBLE PARKING SIGN**  
SCALE: N.T.S.



**4 BIKE RACK DETAIL**  
SCALE: 1/2" = 1'-0"

**4 BIKE CAPACITY**

**MIDWAY PARK BLVD. N.E. (65' R.O.W.)**



**Curve Table**

CHORD	ARC LENGTH	ANGLE	CHORD BEARING	ARC BEARING	CHORD LENGTH
100.00	100.00	90.00	N 0° 0' 0" E	45.00	100.00
150.00	150.00	135.00	N 45° 0' 0" E	67.50	150.00
200.00	200.00	180.00	N 90° 0' 0" E	90.00	200.00
250.00	250.00	225.00	N 135° 0' 0" E	112.50	250.00
300.00	300.00	270.00	N 180° 0' 0" E	135.00	300.00
350.00	350.00	315.00	N 225° 0' 0" E	157.50	350.00
400.00	400.00	360.00	N 270° 0' 0" E	180.00	400.00

**1 SITE PLAN**  
SCALE: 1" = 30'-0"

**PARKING CALCULATIONS**

TYPE	REQUIREMENTS	PROVIDED
<b>AUTO PARKING</b>	44 SPACES (1/2000 S.F. = 19 SPACES) (OFFICE: 1/200 S.F. = 25 SPACES)	50 SPACES
<b>ACCESSIBLE PARKING</b>	3 SPACES (3 SPACES REQUIRED FOR 30 TO 50 TOTAL REQUIRED AUTO PARKING)	3 SPACES
<b>MOTORCYCLE PARKING</b>	3 SPACES (2 SPACES REQUIRED FOR 26 TO 50 TOTAL REQUIRED AUTO PARKING)	2 SPACES
<b>BIKE SPACES</b>	2 SPACES (1 SPACE REQUIRED PER DAY 20 OR MORE BIKES)	2 SPACES
<b>4 BIKE RACK</b>		

**PROJECT RECAP**

<b>APPLICATION NUMBER:</b>	
<b>PROJECT NUMBER:</b>	
<b>PROJECT NAME:</b>	
<b>PROJECT ADDRESS:</b>	
<b>PROJECT TYPE:</b>	
<b>PROJECT DATE:</b>	
<b>PROJECT STATUS:</b>	
<b>PROJECT DESCRIPTION:</b>	
<b>PROJECT CONTACT:</b>	
<b>PROJECT LOCATION:</b>	
<b>PROJECT OWNER:</b>	
<b>PROJECT ARCHITECT:</b>	
<b>PROJECT ENGINEER:</b>	
<b>PROJECT SURVEYOR:</b>	
<b>PROJECT INSPECTOR:</b>	
<b>PROJECT REVIEWER:</b>	
<b>PROJECT APPROVER:</b>	
<b>PROJECT DATE:</b>	
<b>PROJECT STATUS:</b>	
<b>PROJECT COMMENTS:</b>	

**SITE DEVELOPMENT PLAN**

**COMMISSION No.**  
15-121  
**DATE** 08-11-2015  
**REV.** A  
**SHEET** AC-1  
1 OF 3

**PSRBB**  
INDUSTRIAL GROUP, INC.  
1845 NORTHWESTERN DRIVE, SUITE A EL PASO, TEXAS 79912  
915 877-2020 FAX 877-2998

**A NEW OFFICE / WAREHOUSE**  
for  
**PURVIS INDUSTRIES**  
3815 SINGER BLVD. N.E.  
ALBUQUERQUE NEW MEXICO 87109

