

Date: 6/22/2011

Revisions:

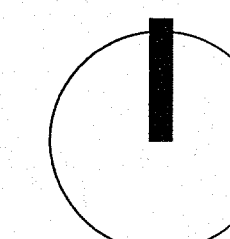
- ▲ 7/8/11
- ▲ 7/27/11
- ▲
- ▲
- ▲

Drawn by: JC

Reviewed by: EP

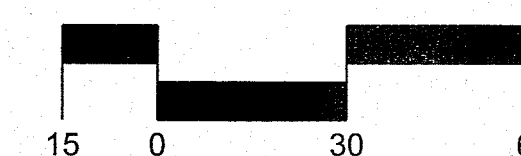
Valle Norte Tract 3B.2  
Fiesta Park Care Center

Albuquerque, New Mexico



NORTH

Scale: 1" = 30'



Sheet Title:

**Landscape  
Plan**

Sheet Number:

**LS-01**

**PLANT LEGEND**

Qty	Symbol	Scientific Name Common Name	Installed Size	Mature Height/Spread	Landscape Coverage	Water Use	Drip Emitters Per Plant (see note)
22		<i>Fraxinus velutina</i> 'Modesto' Modesto Ash	2" B&B	40'/40'		Medium+	6-2 gph
<b>Shrubs/Groundcovers</b>							
33		<i>Forestiera neomexicana</i> New Mexico Olive	5 Gal	15'/15'	30 sf=990 sf	Medium	6-2 gph
26		<i>Vitex</i> Chaste Tree	5 Gal	20'/20'	35 sf=910 sf	Medium	6-2 gph
92		<i>Chamaebatiaria</i> Fernbush	1-Gal	5'/6'	30 sf=2760 sf	Medium	2-2 gph
35		<i>Caryopteris</i> Blue Mist	1-Gal	3'/3'	15 sf=525 sf	Low+	2-2 gph
57		<i>Vauquelinia</i> Rosewood	1-Gal	10'/10'	40 sf=2280 sf	Low+	2-1 gph
91		<i>Prunus besseyi</i> Sand Cherry	1-Gal	3'/3'	25 sf=2275 sf	Medium	2-2 gph
10		<i>Yucca</i> Spanish Dagger	1-Gal	6'/3'	25 sf=250 sf	Low	2-1 gph
128		<i>Hesperaloe parviflora</i> Red Yucca	1-Gal	3'/4'	20 sf=2560 sf	Low+	2-1 gph
37		<i>Rhus trilobata</i> Three Leaf Sumac	1-Gal	6'/6'	30 sf=1110 sf	Medium	2-2 gph
244		<i>Ericameria</i> Turpentine Bush	1-Gal	3'/4'	25 sf=6100 sf	Low	2-1 gph
198		<i>Rhus trilobata</i> Autumn Amber Sumac	1-Gal	2'/6'	35 sf=6930 sf	Medium	2-2 gph
42		<i>Ilex</i> Wilson Holly	1-Gal	10'/10'	25 sf=1050 sf	Medium+	2-2 gph
74		<i>Campsis</i> Trumpet Vine	1-Gal	climbing/40'	30 sf=2220 sf	Medium	2-2 gph
<b>Ornamental Grasses</b>							
86		<i>Nolina</i> Bear Grass	1-Gal	5'/6'	35 sf=3010 sf	Low	2-2 gph
59		<i>Muhlenbergia</i> Deer Grass	1-Gal	4'/4'	20 sf=1180 sf	Low	2-2 gph
Total landscape coverage=34,150 sf							

**SITE DATA**

GROSS LOT AREA	204,193 SF
LESS BUILDING(S)	61,000 SF
NET LOT AREA	143,193 SF

REQUIRED LANDSCAPE 15% OF NET LOT AREA	21,478 SF
PROPOSED LANDSCAPE	73,675 SF
PERCENT OF NET LOT AREA	51 %

REQUIRED STREET TREES PROVIDED AT 30' O.C. SPACING ALONG STREET	NA
REQUIRED PARKING LOT TREES PROVIDED AT 1 PER 10 SPACES (49 SPACES/10)	5

REQUIRED LANDSCAPE COVERAGE 75% LIVE VEGETATIVE MATERIAL (73,675 SF PROPOSED LANDSCAPE X 75%)	55,256 SF MIN.
NATIVE SEED COVERAGE	22,400 SF
PLANTING AREA COVERAGE/75%	34,150 SF
PROPOSED LANDSCAPE COVERAGE	56,550 SF
PERCENT LANDSCAPE COVERAGE	76%

**PLANTING RESTRICTIONS APPROACH**

A MINIMUM OF 80% OF THE PLANTINGS TO BE  
LOW OR MEDIUM WATER USE PLANTS

A MAXIMUM OF 20% OF THE LANDSCAPE AREA TO BE  
HIGH WATER USE TURF

**NOTE**

MAINTENANCE OF LANDSCAPE PROVIDED BY OWNER

PLANTINGS TO BE WATERED BY AUTO. DRIP IRRIGATION  
SYSTEM WITH REDUCED PRESSURE BACKFLOW PREVENTER  
PER CITY OF ALBUQUERQUE

WATER MANAGEMENT IS THE SOLE RESPONSIBILITY  
OF THE PROPERTY OWNER

THIS PLAN IS TO COMPLY WITH C.O.A. LANDSCAPE  
AND WATER WASTE ORDINANCE  
PLANTING RESTRICTIONS APPROACH

IT IS THE INTENT OF THIS PLAN TO PROVIDE MIN.  
75% LIVE GROUNDCOVER OF LANDSCAPE AREAS  
AT MATURITY

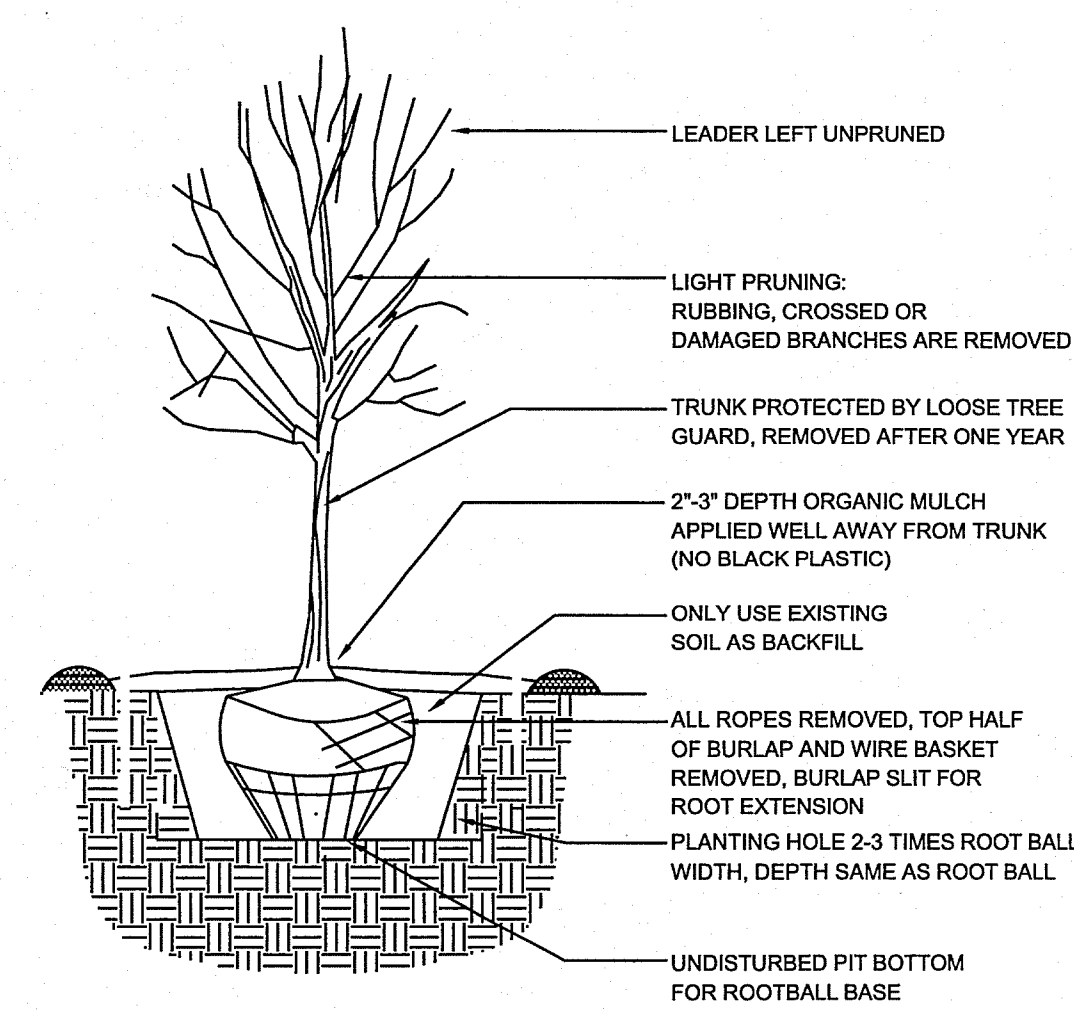
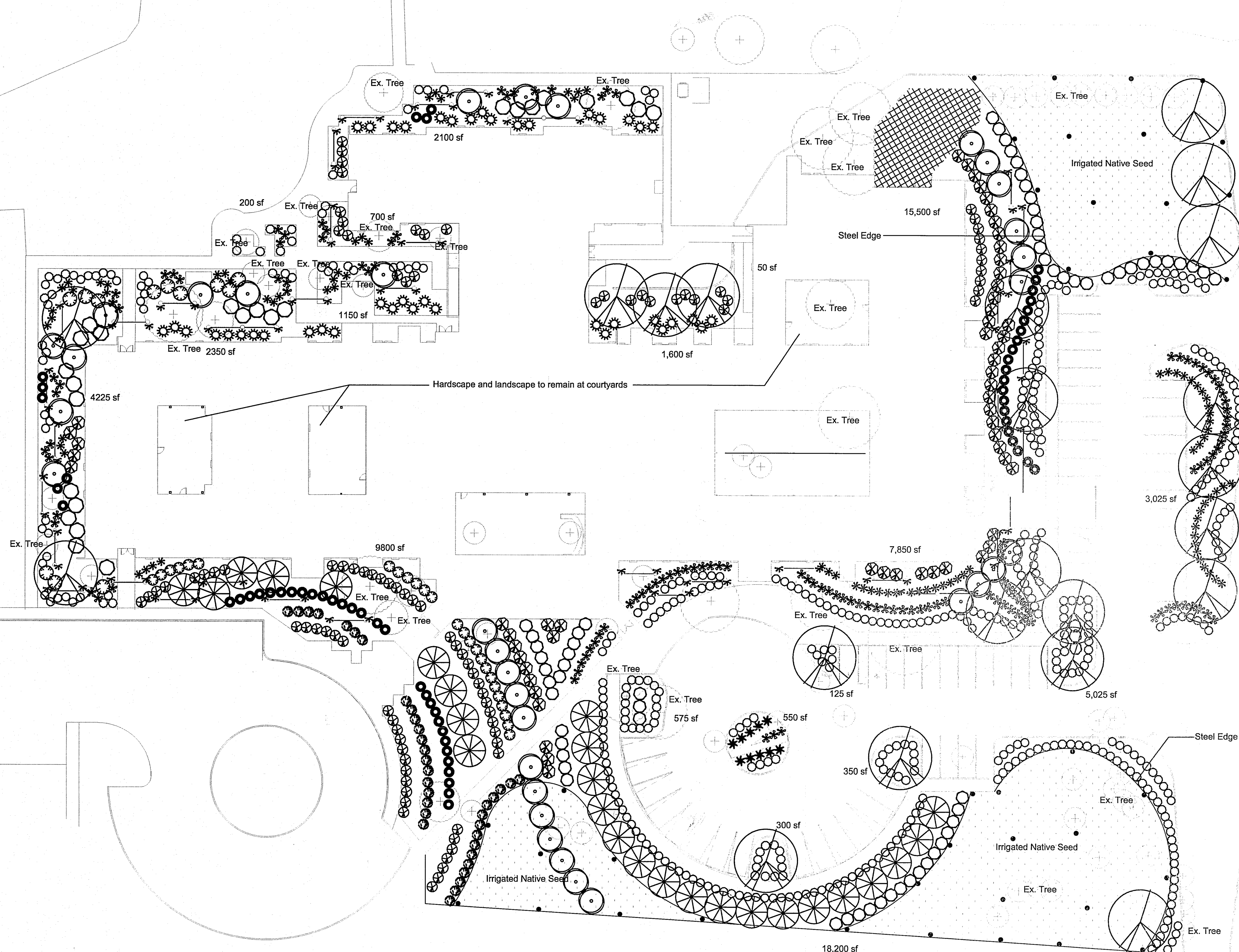
LANDSCAPE AREAS TO BE MULCHED WITH GRAVEL  
MULCH AT 2"-3" DEPTH OVER FILTER FABRIC

APPROVAL OF THE LANDSCAPE PLAN DOES NOT CONSTITUTE  
OR IMPLY COMPLIANCE WITH, OR EXEMPTION FROM, THE  
C.O.A. LANDSCAPE AND WATER WASTE ORDINANCE

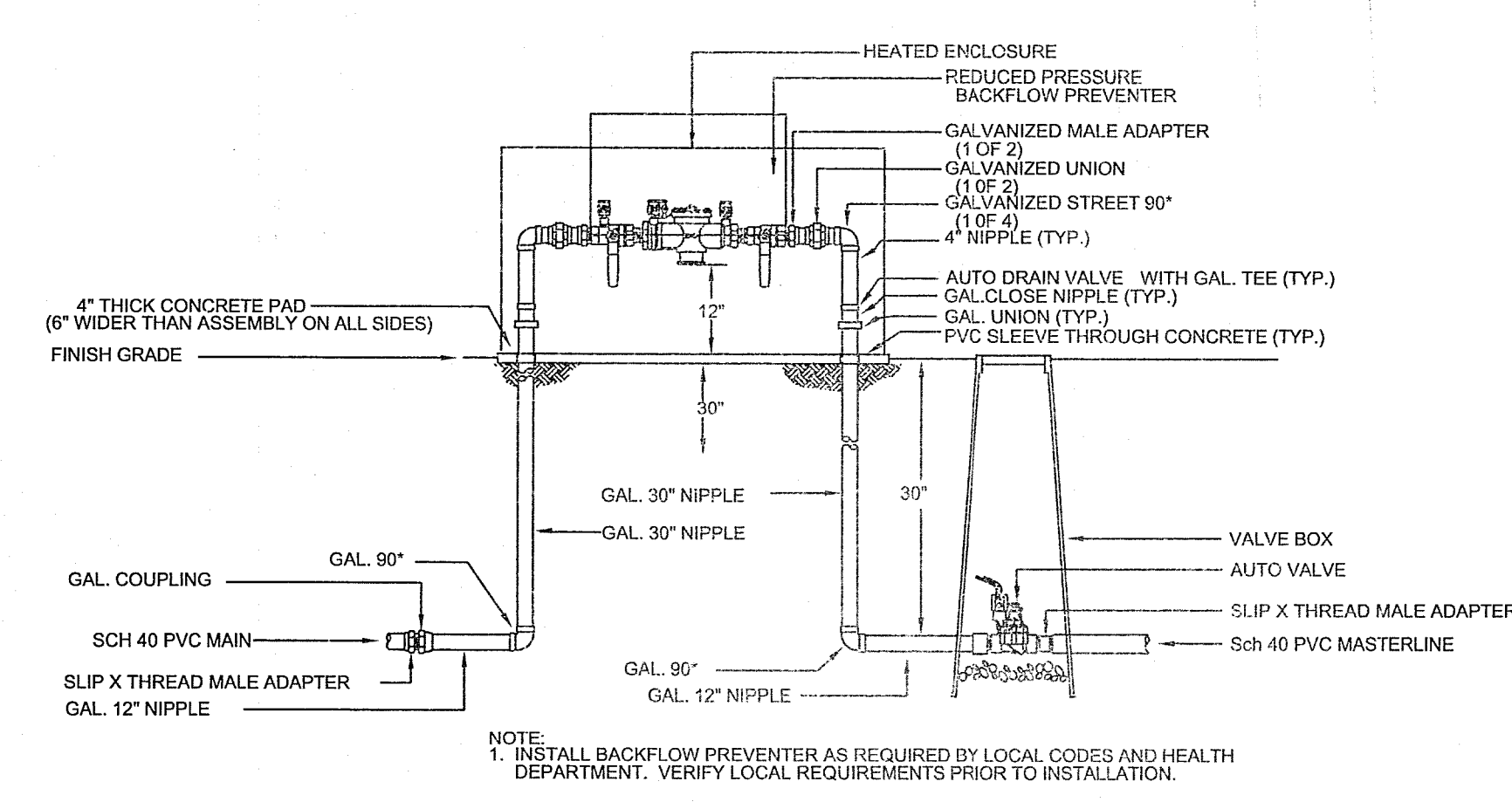
TREES ARE NOT TO BE PLACED IN PUBLIC UTILITY EASEMENTS

NO PARKING SPACE SHALL BE MORE THEN 100'  
FROM A TREE.

ALL LIVE EXISTING LANDSCAPING NOT REMOVED AS PART OF NEW  
SITE WORK SHALL REMAIN AND BE AUGMENTED WITH NATIVE SEED



TREE PLANTING DETAIL



NOTE:  
1. INSTALL BACKFLOW PREVENTER AS REQUIRED BY LOCAL CODES AND HEALTH DEPARTMENT. VERIFY LOCAL REQUIREMENTS PRIOR TO INSTALLATION.

RP BACKFLOW/MASTER VALVE DETAIL