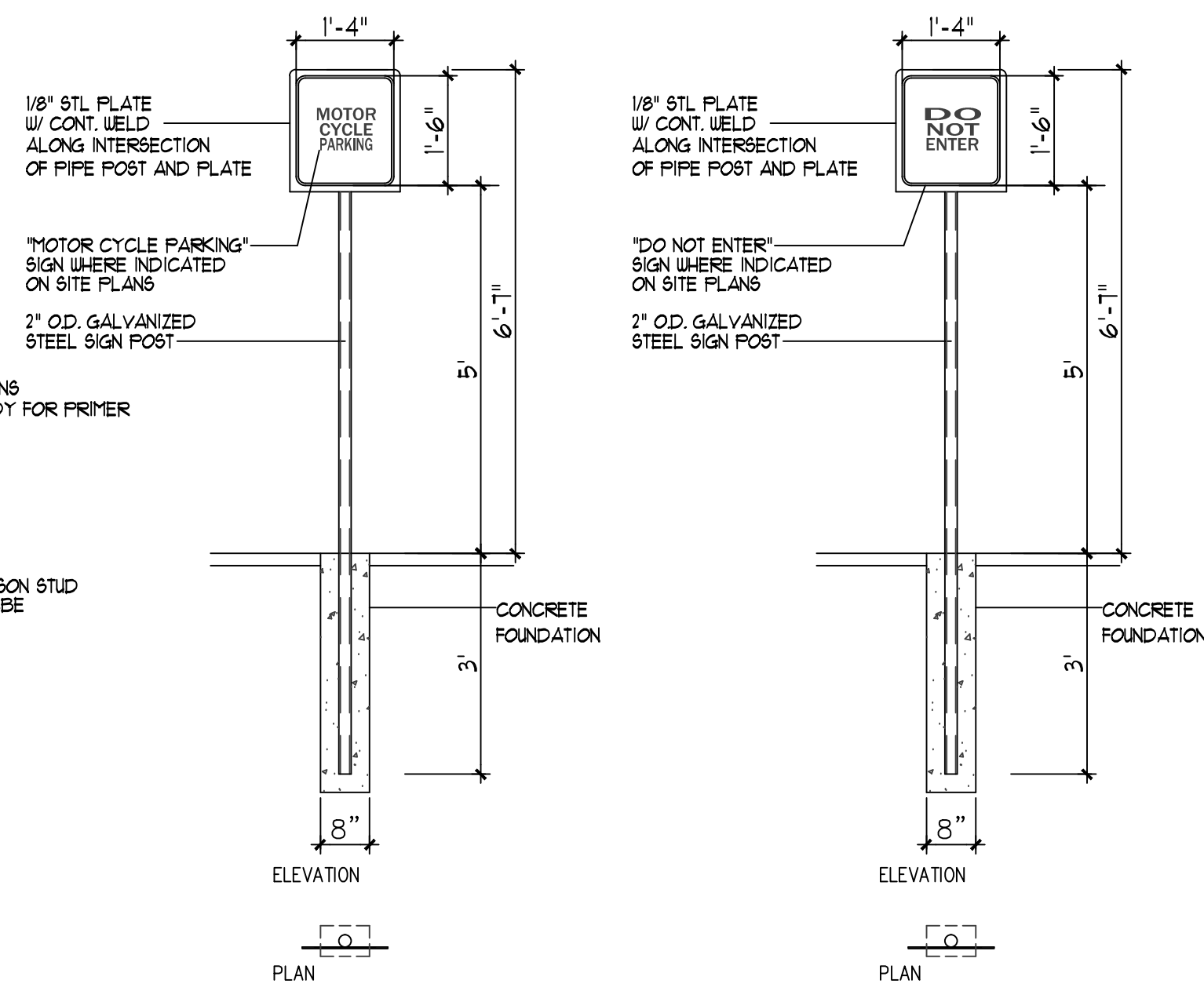
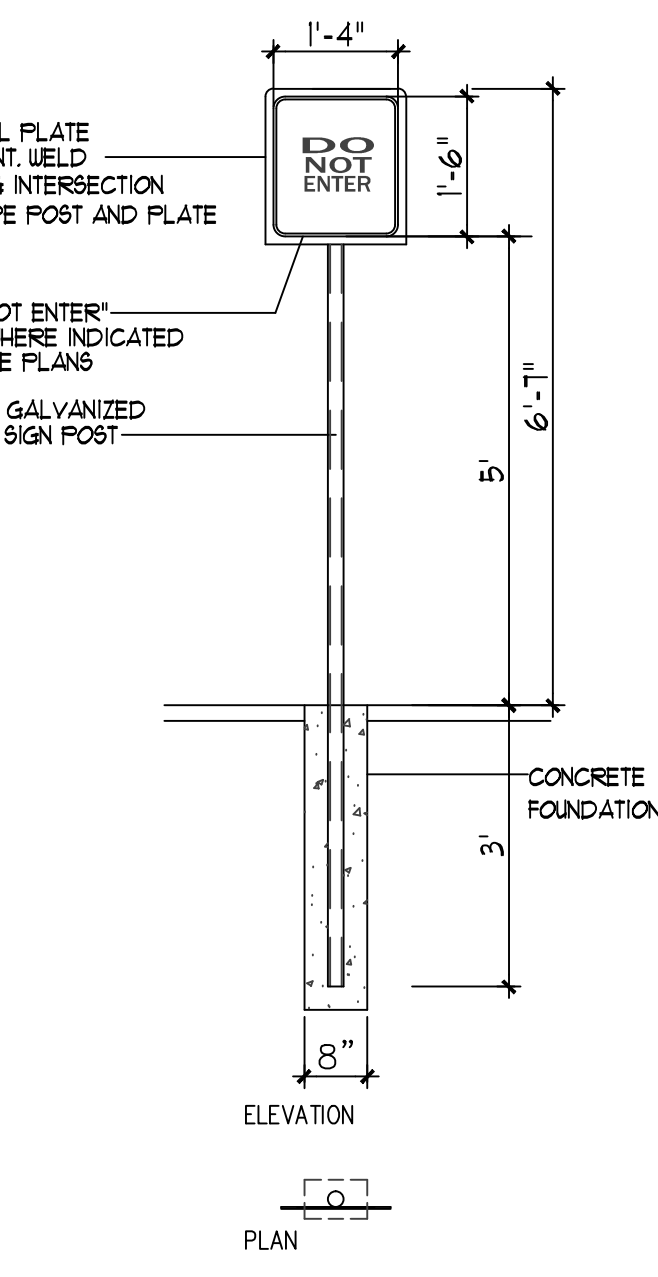


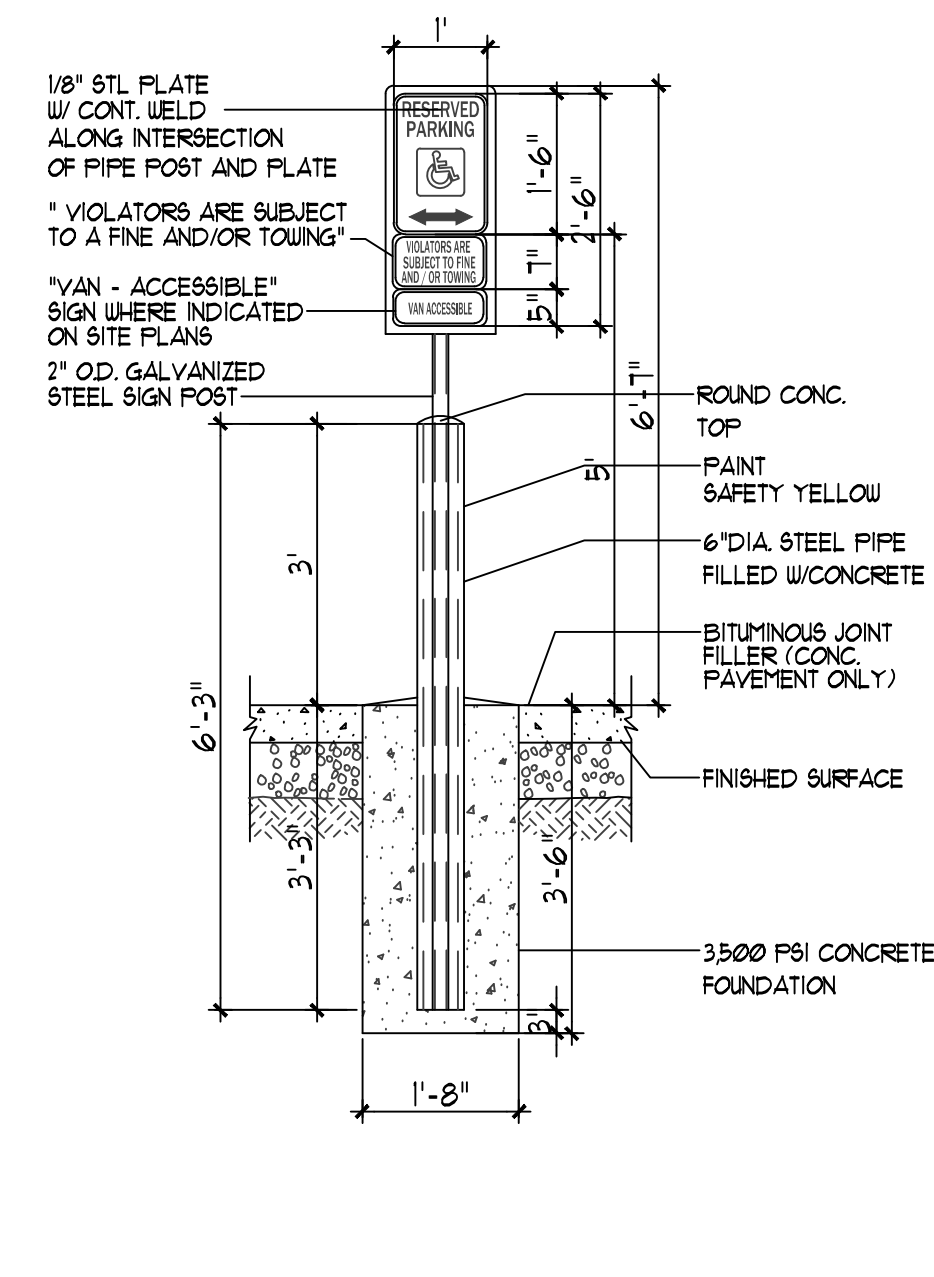
13 BIKE RACK  
NT5



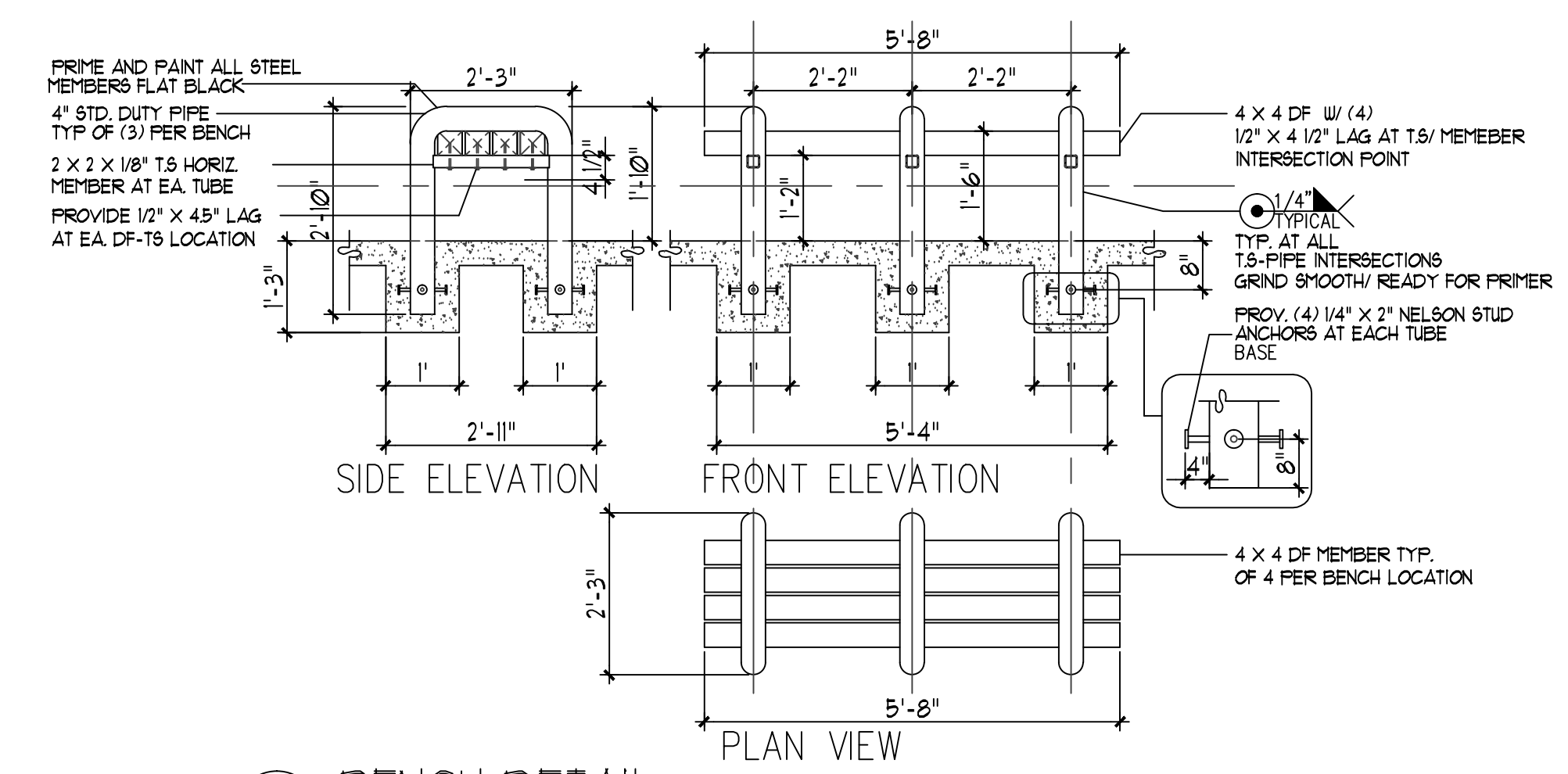
12 MISC. SIGNAGE  
NT5



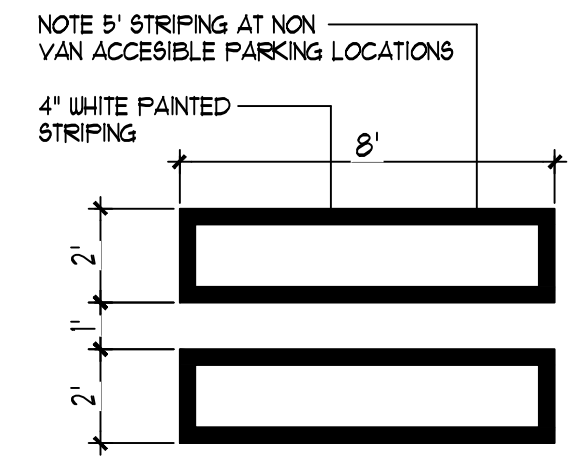
12A MISC. SIGNAGE  
NT5



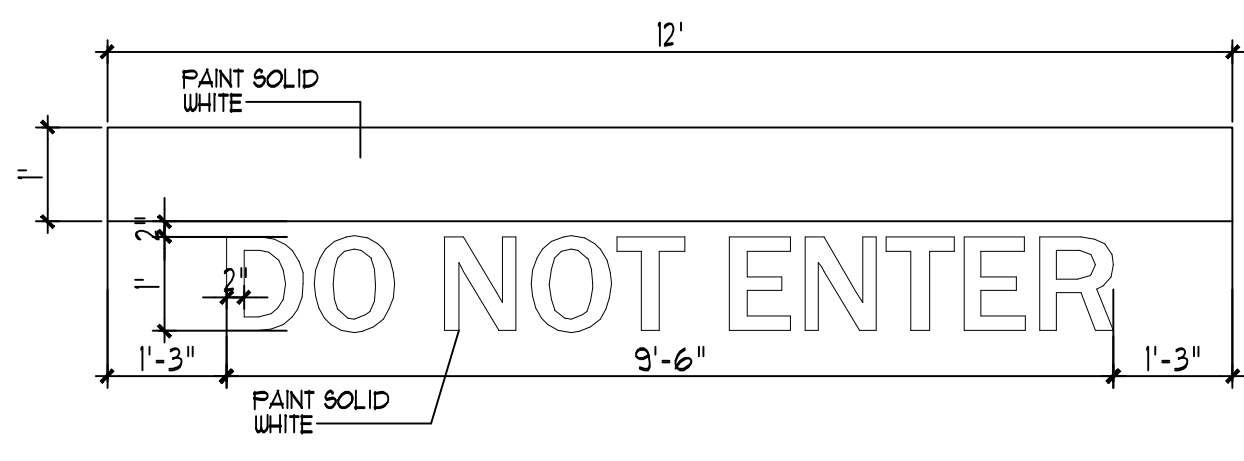
11 H.C. SIGNAGE  
NT5



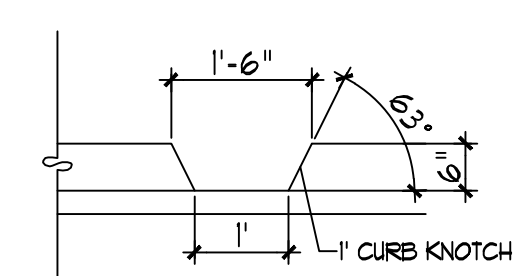
10 BENCH DETAIL  
NT5



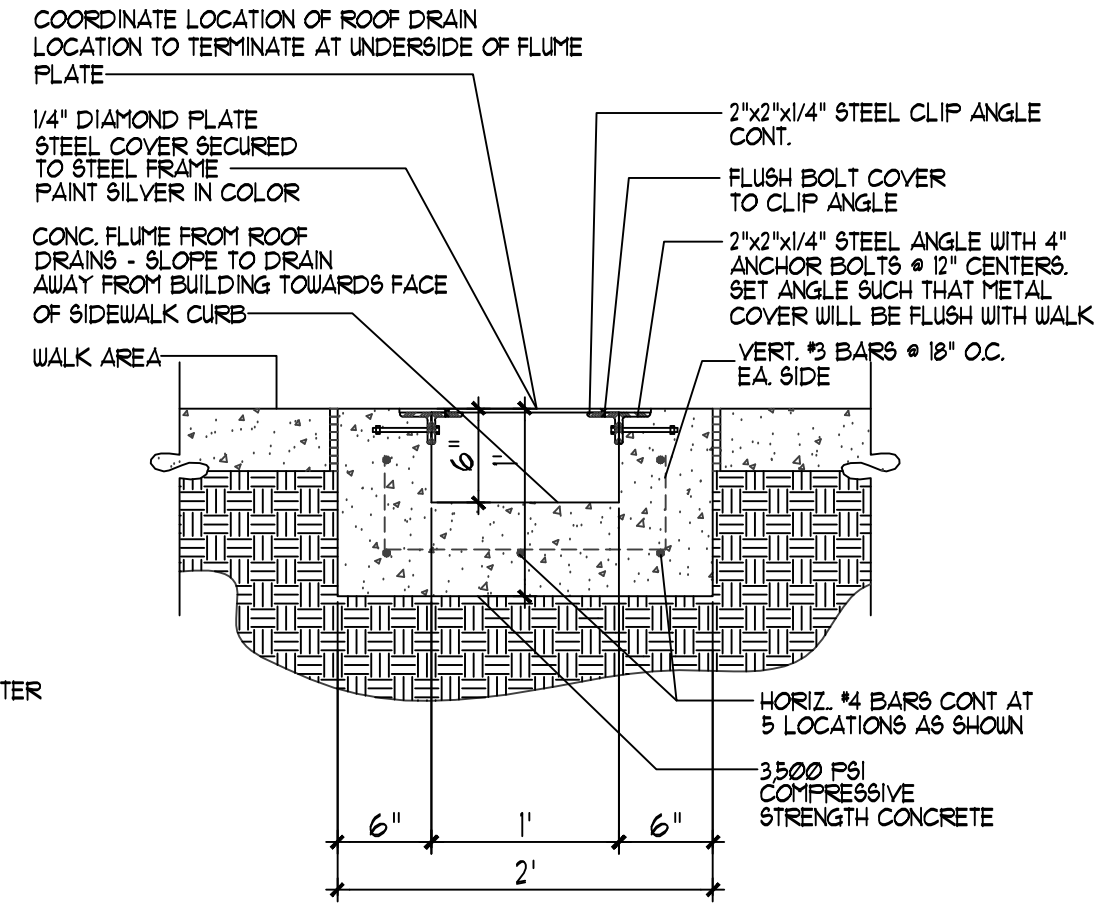
9 H.C. PARKING-WALK PAINT DETAIL  
NT5



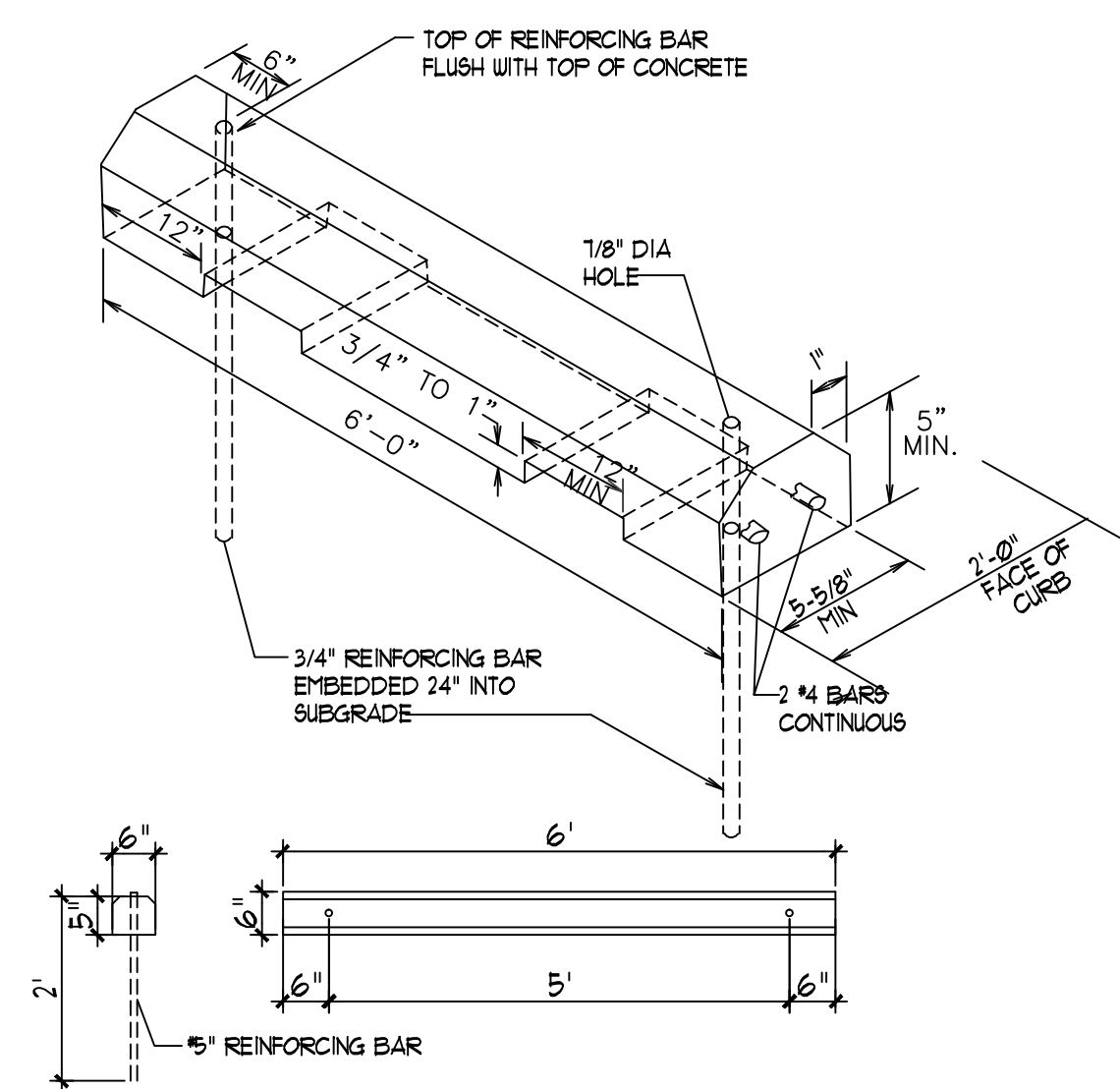
8 SITE DIRECTIONAL PAINT DETAIL  
NT5



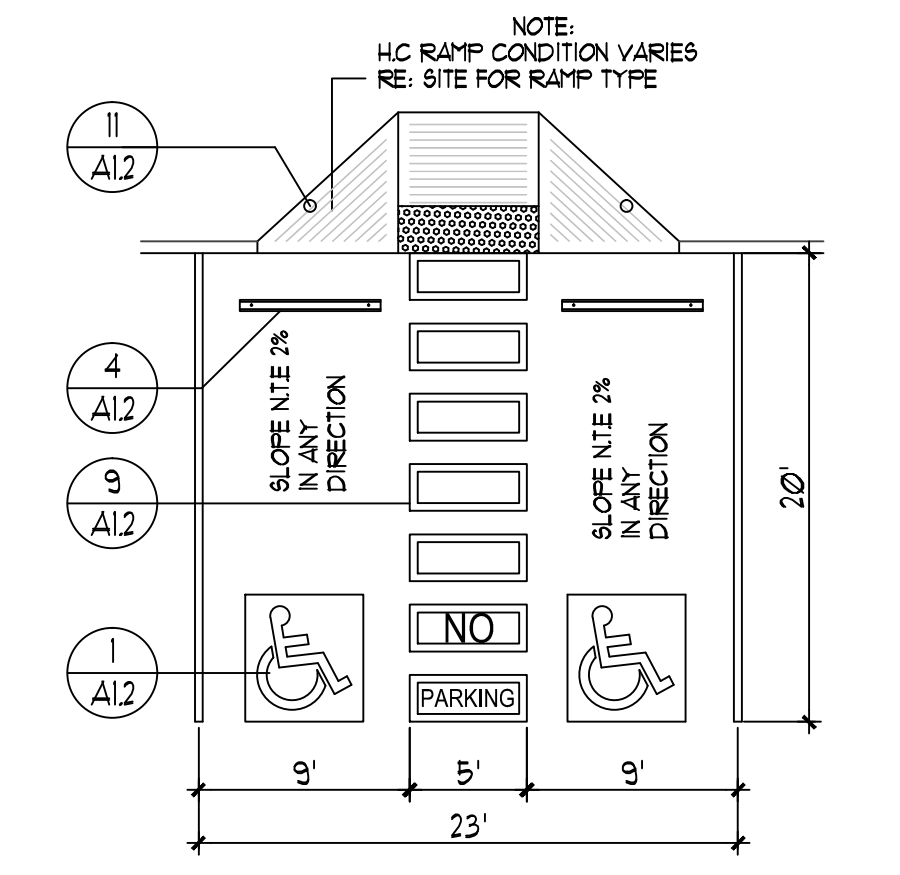
7 CURB NOTCH  
NT5



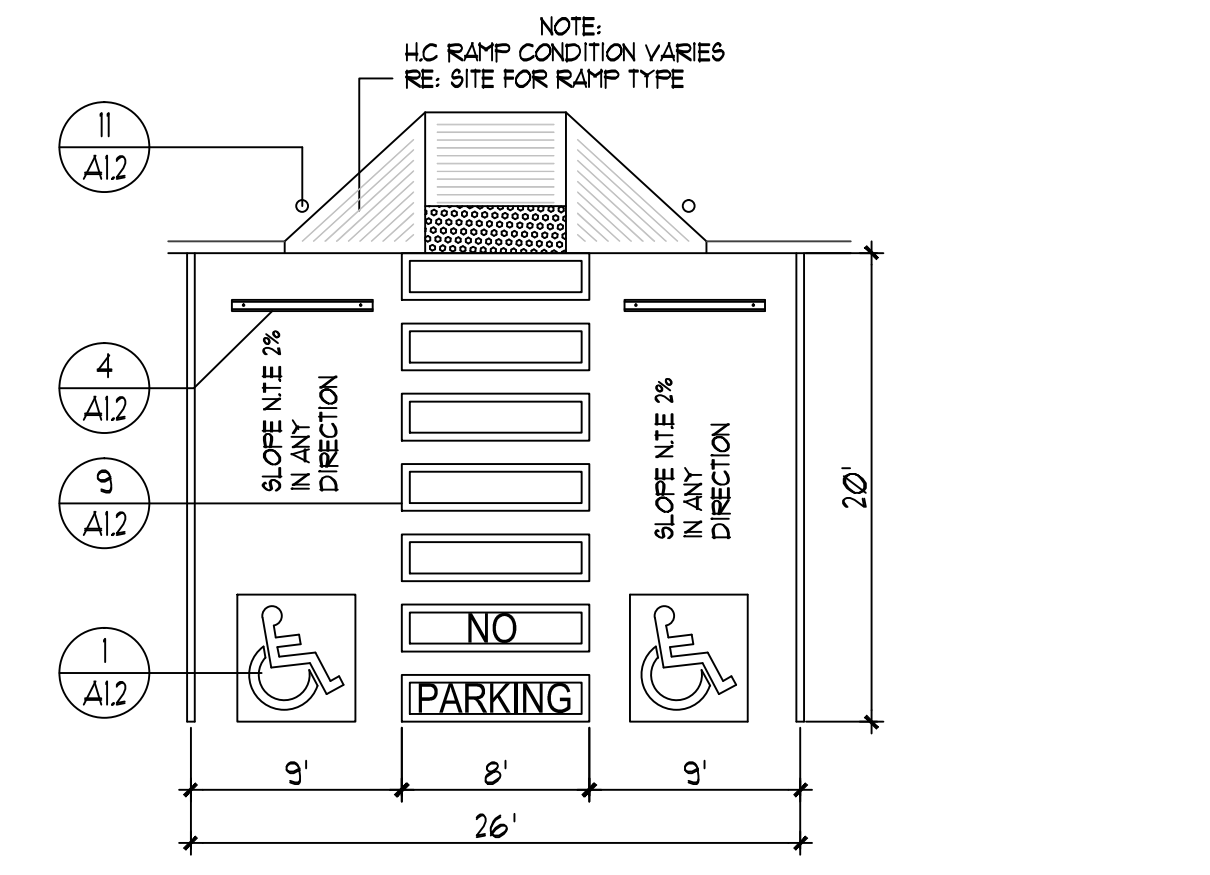
6 CONCRETE FLUME DETAIL  
NT5



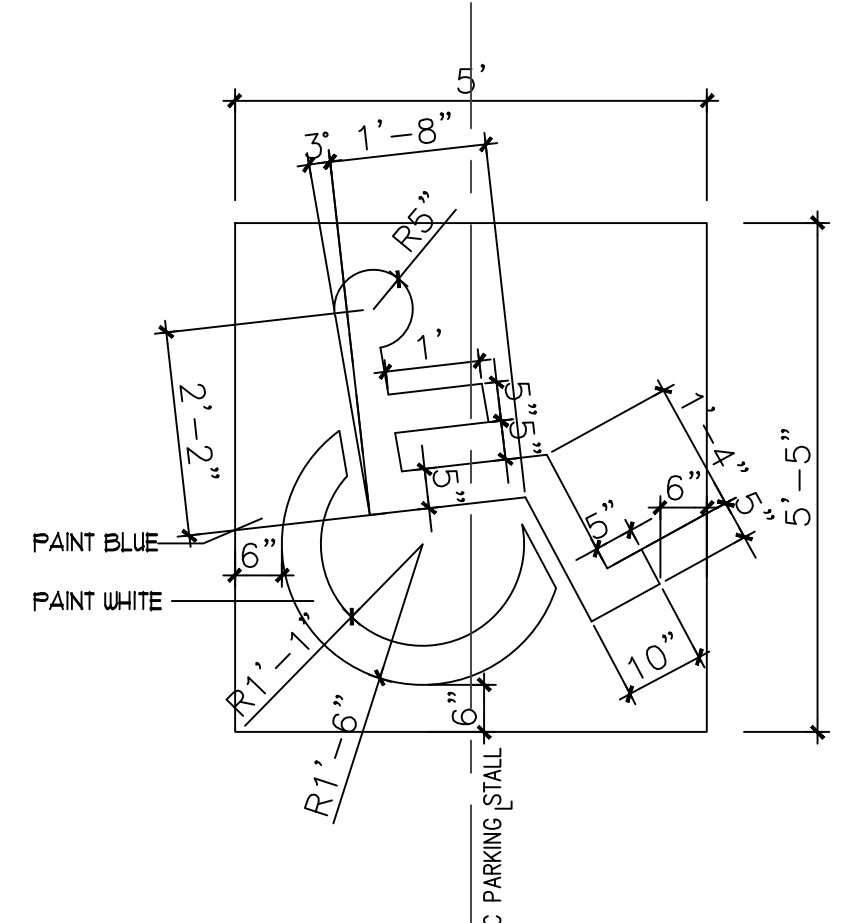
4 WHEEL STOP  
NT5



3 H.C. PARKING PLAN DETAIL  
NT5



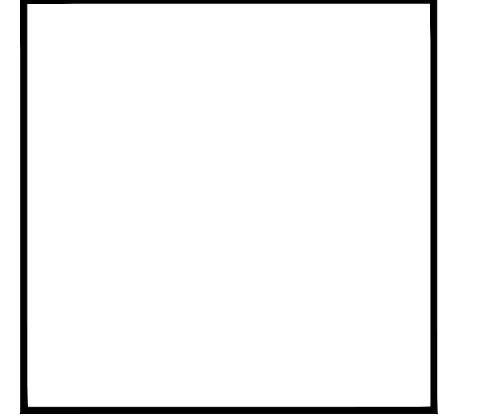
2 H.C. PARKING PLAN DETAIL (VAN ACCESSIBLE)  
NT5



1 H.C. SIGNAGE  
NT5

REV	DATE	BY	REVISION
1			
2			
3			
4			
5			
6			
7			
8			
9			
10			
11			
12			
13			

**MODULUS ARCHITECTS**  
 100 SUN AVE. N.W. SUITE 305  
 ALBUQUERQUE, NEW MEXICO 87109  
 PHONE (505) 338-1499 FAX (505) 338-1498



PROJECT TITLE	COOL SPRINGZ SAN MATEO BLVDNE ALBUQUERQUE	PROJECT MANAGER	STEPHEN DUNBAR, AIA	JOB NO.	COOL-SPRINGZ	DRAWN BY:	S-MAN
SHEET TITLE							SITE DETAILS

DATE:	4/13/2017	sheet:	A12
SCALE:		REBAR SCALE	