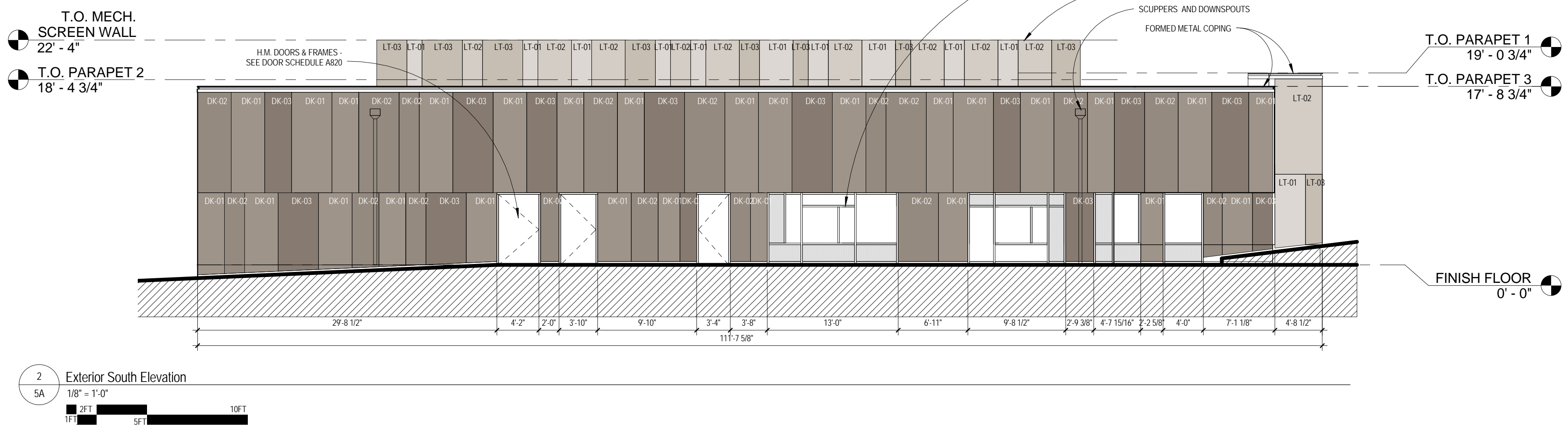
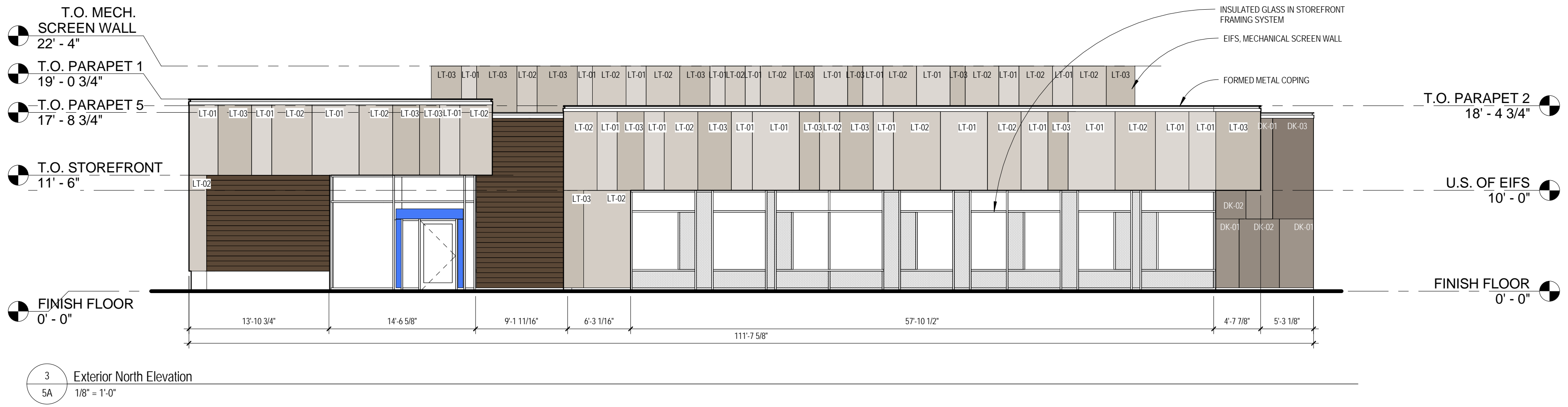
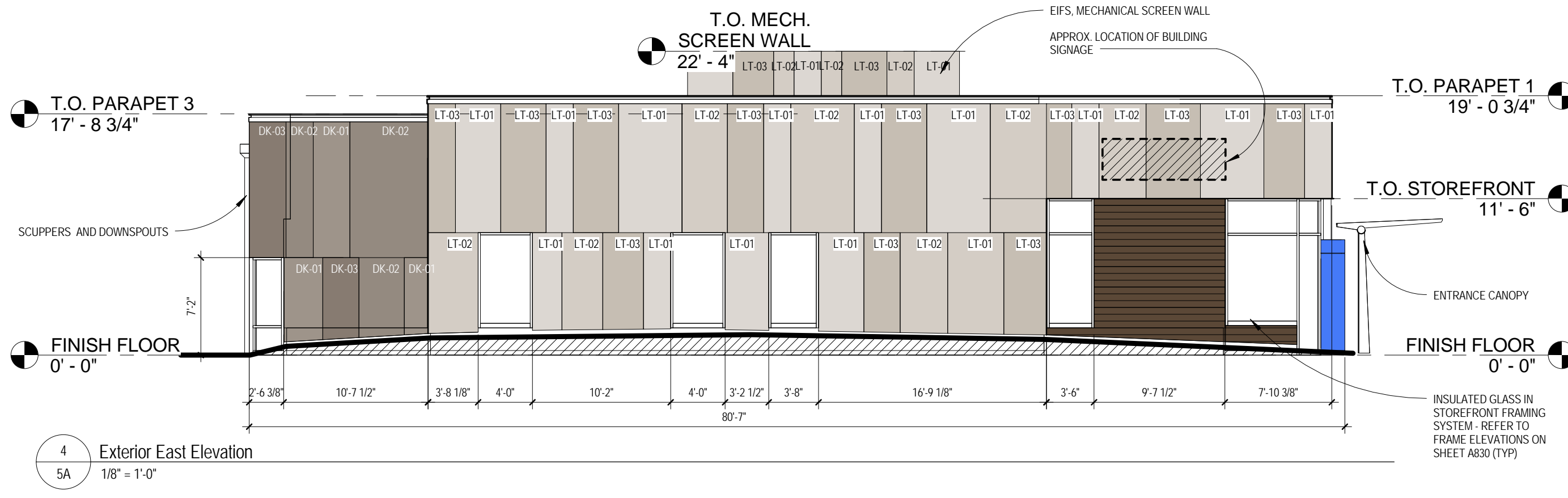
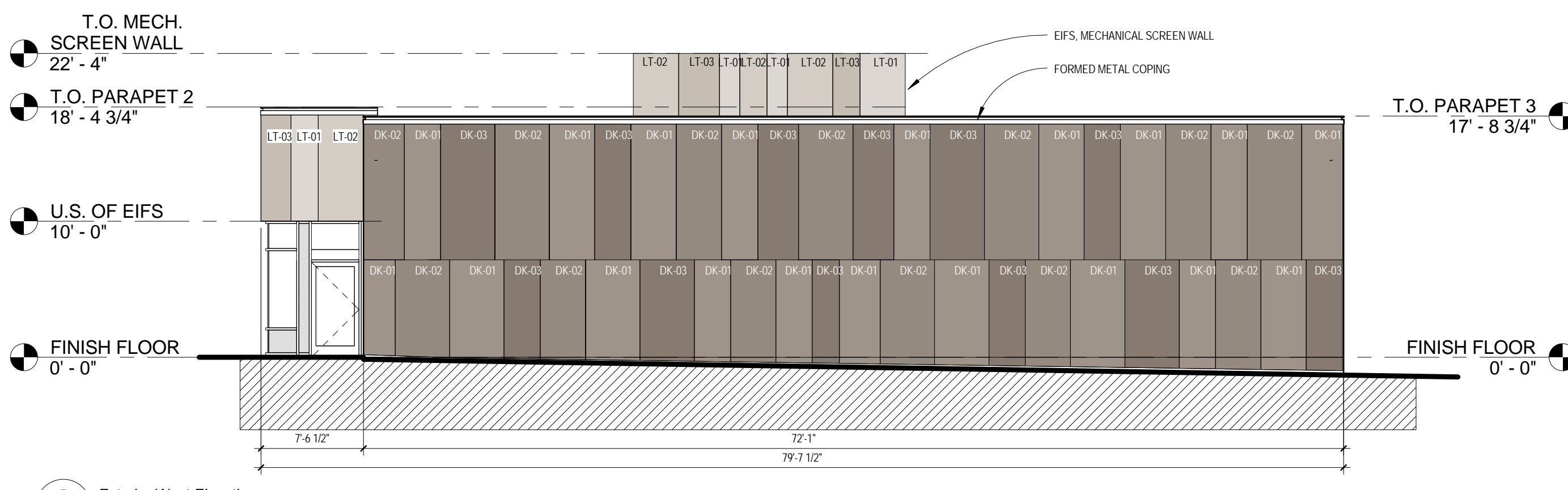
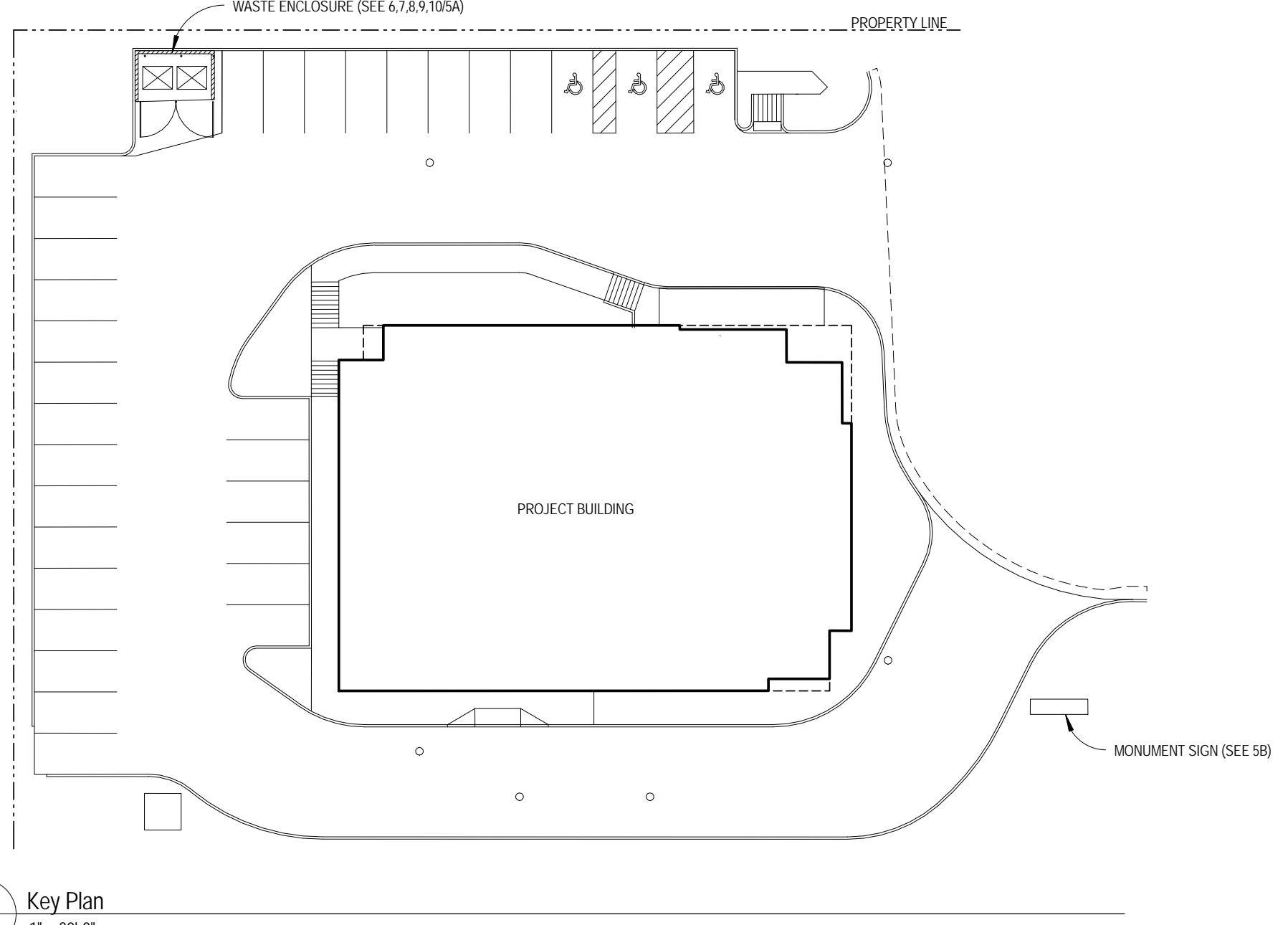
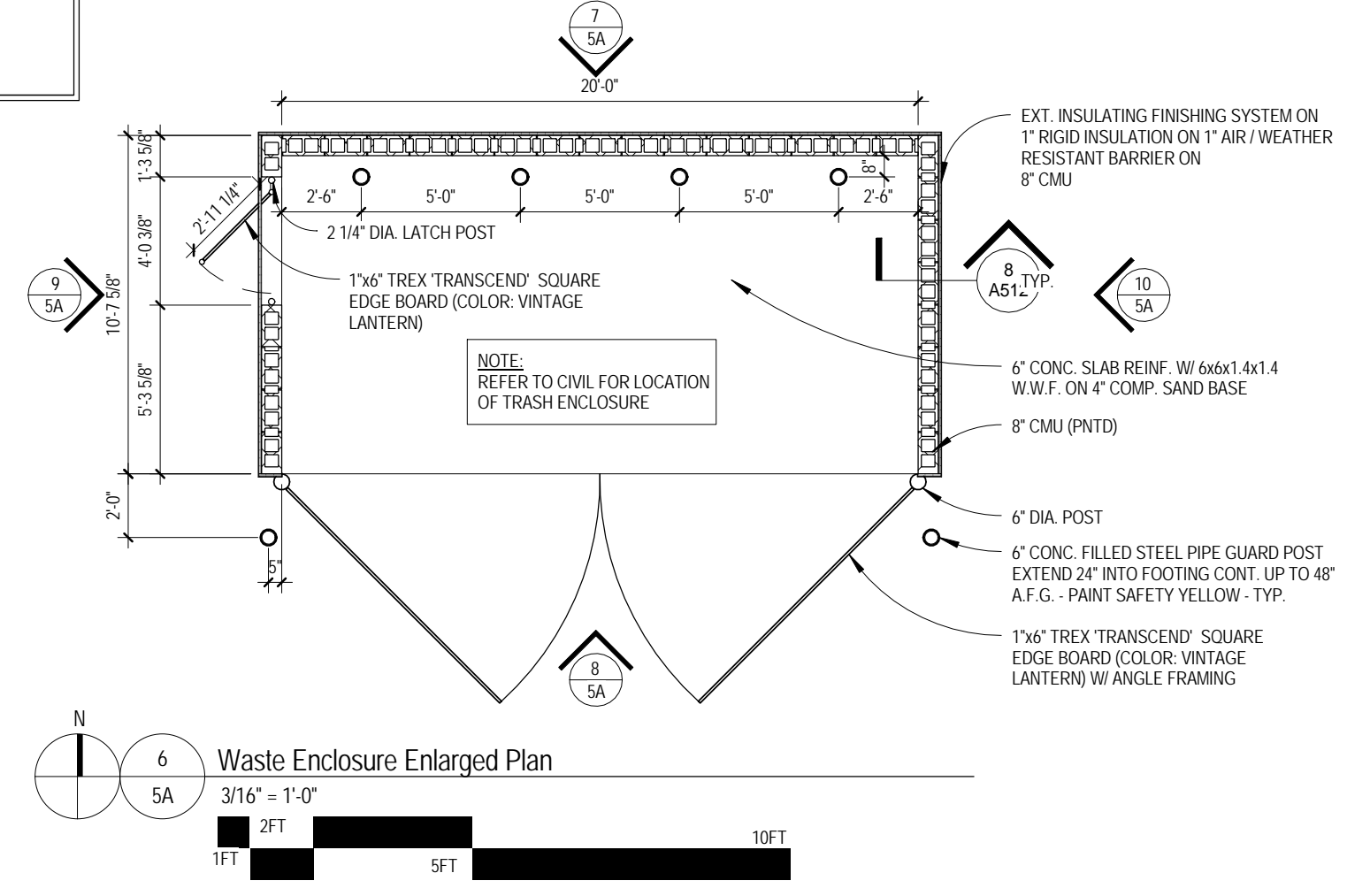
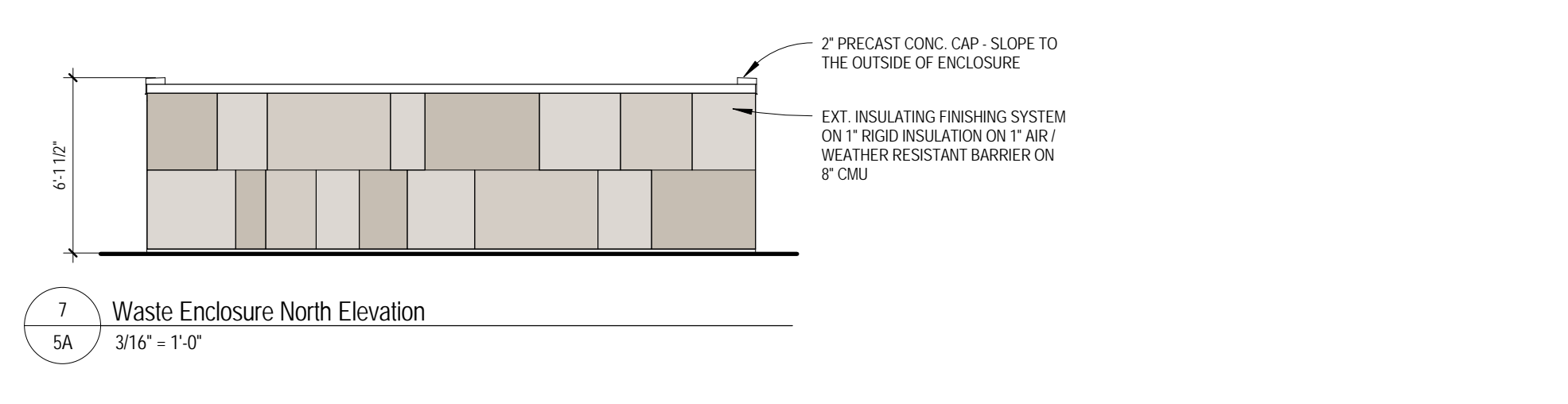
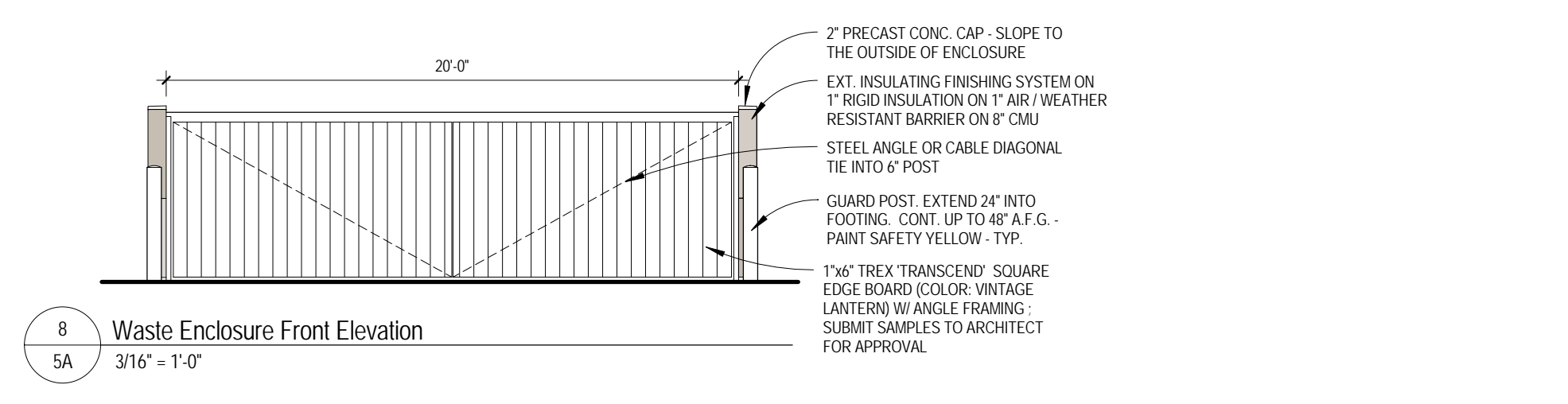
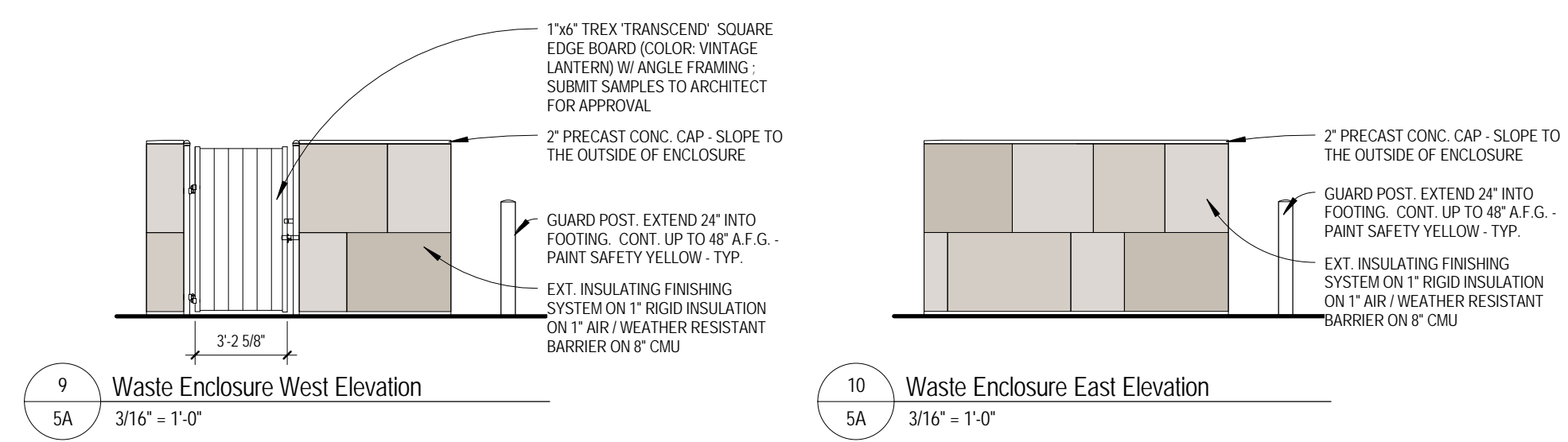


THIS DRAWING IS THE PROPERTY OF INFORM STUDIO - UNAUTHORIZED USE OF ANY KIND, INCLUDING USE ON OTHER PROJECTS, IS PROHIBITED.



MATERIAL	DESCRIPTION / REMARKS	MANUFACTURER	FINISH
EIFS	STO THERMNEXT	STO	LT-01: STO LIMESTONE 2088 LT-02: STO LIMESTONE 9360 LT-03: STO LIMESTONE 9340 DK-01: STO LIMESTONE SW61521 DK-02: STO LIMESTONE SW6152 DK-03: STO LIMESTONE SW7034
FIBER CEMENT PANEL	NICHHA VINTAGE WOOD & ILLUMINATION	NICHHA	FCP-1: VINTAGE WOOD BARK FCP-2: ILLUMINATIONS 'DAVITA BLUE' PANTONE PMS 301
STOREFRONT FRAME SYSTEM	TRIFAB VERSA GLAZE 451T, SHEARBLOCK ALUM. STOREFRONT GLAZING SYSTEM W/ THERMAL BREAK, CENTER SET GLAZED VERSION	KAWNEER	CLEAR ANODIZED
INSULATED GLASS	1" CLEAR INSULATED LOW-E GLASS WITH THE FOLLOWING MINIMUM CRITERIA: • SHADING COEFFICIENT = 0.81 • U" VALUE = 0.35 OR LESS • SOLAR HEAT GAIN COEFFICIENT = 0.60 OR LESS • VISIBLE LIGHT TRANS. = 65 OR MORE • LOW-E COATING ON #2 & #3 SURFACES		GLASS TYPE: • 1A: NON-TEMPERED, CLEAR • 1B: TEMPERED, CLEAR • 2A: NON-TEMPERED, FROSTED • 2B: TEMPERED, FROSTED * REFER TO SPECIFICATION SECTION 088000 FOR GLASS TYPE SPECIFICATIONS
FORMED METAL COPING	ALUMINUM BREAK METAL COPING, FLASHING & COUNTERFLASHING W/ DRIP EDGE		CLEAR ANODIZED
METAL SURFACE FLASHING	ALUMINUM BREAK METAL FLASHING		CLEAR ANODIZED

EIFS COLOR LEGEND	
FRONT	BACK
LT-01: STO LIMESTONE 2088	DK-01: STO LIMESTONE SW61521
LT-02: STO LIMESTONE 9360	DK-02: STO LIMESTONE SW6152
LT-03: STO LIMESTONE 9340	DK-03: STO LIMESTONE SW7034



CONSULTANTS  
DATE  
ISSUED FOR  
OWNER  
PROJECT  
SHEET TITLE  
STAMPS

Genesis KC Development, LLC  
c/o Davita Healthcare Partners, Inc.  
2000 14th Street  
Denver, CO 80202

DAVITA INC.  
DIALYSIS CENTER  
Del Norte Albuquerque (Shell)  
5207 San Mateo Blvd NE  
Albuquerque, NM 87110  
Facility No. 111224

PROJECT # 2014.2185.00

5A