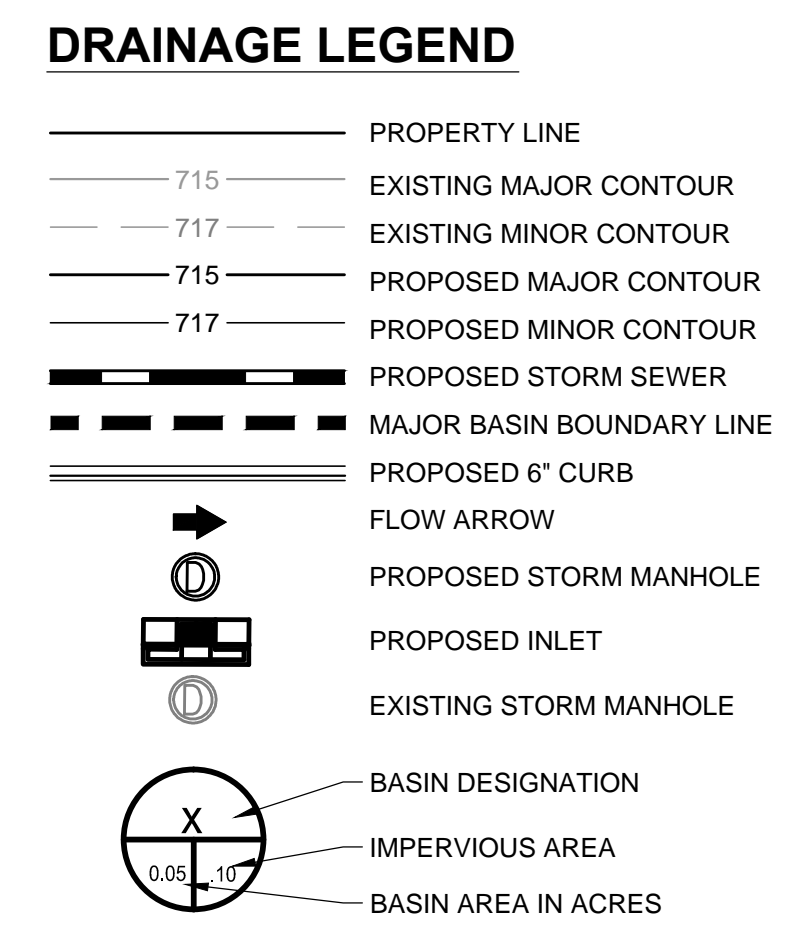
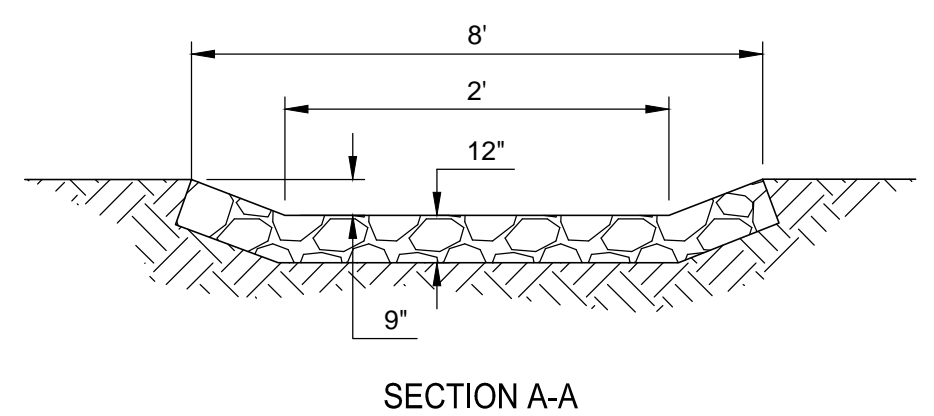


ZONE F-17 VICINITY MAP
NOT TO SCALE



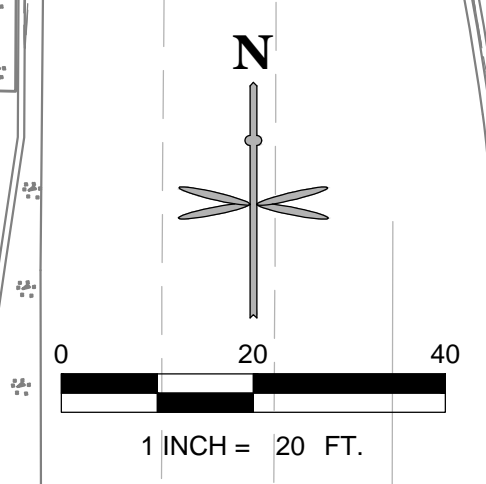
DRAINAGE NOTES:

1. THE PROPOSED STORM SEWER IS DESIGNED FOR THE 100-YEAR STORM EVENT. IN THE EVENT THE INLET GRATE BECOMES COMPLETELY CLOGGED, RUNOFF WILL POND WITHIN THE PARKING AREA AT THE LOWEST POINT LOCATED IN THE SOUTHWEST CORNER OF THE SITE FOR A DEPTH OF 6". IT WILL OVERTOP THE CURB, AND OVERLAND FLOW DOWN THE LANDSCAPE AREA IN A WESTERLY DIRECTION AND OVER THE PROPOSED RETAINING WALL. STORM FLOW WILL BE INTERCEPTED IN THE PROPOSED CHANNEL AND CARRIED TO THE EXISTING SOUTH POND.

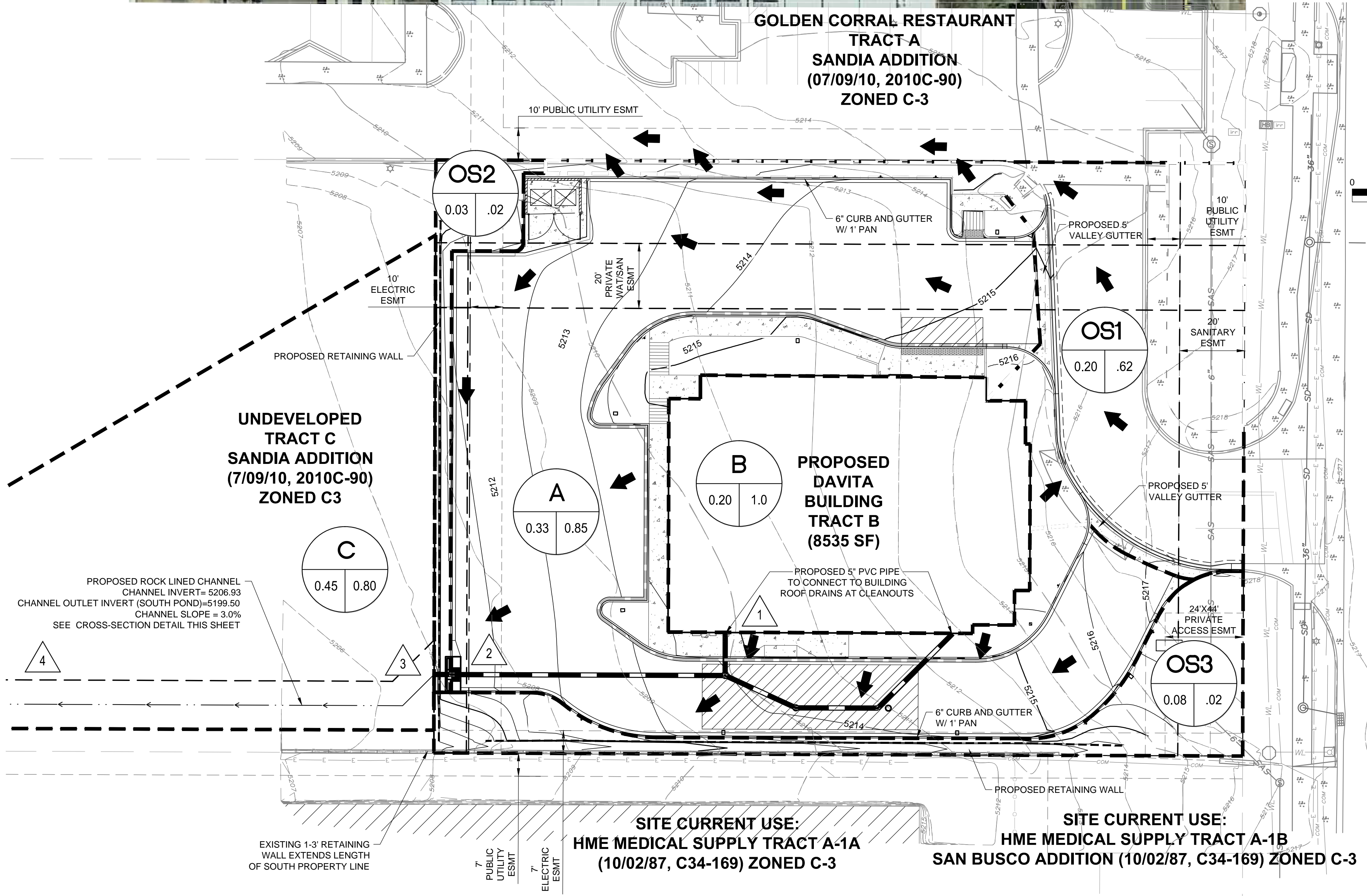


SECTION A-A
ROCK-LINED CHANNEL SECTION
N.T.S.

- FRACTURED FACE ROCK (F.F. ROCK) EROSION CONTROL. ANGULAR FACE ROCK PLACED OVER GEOTEX 501 NON-WOVEN GEOTEXTILE (O.E.)



SAN MATEO BOULEVARD N.E.
(150-FT R.O.W.)



PROJECT BENCHMARK & VERTICAL DATUM

ALL CORNERS FOUND IN PLACE AND HELD WERE TAGGED WITH A BRASS DISK STAMPED "HUGG L.S. 9750" OR "HUGG L.S. 11808" UNLESS OTHERWISE INDICATED HEREON.

ALL CORNERS THAT WERE SET ARE EITHER A 5/8" REBAR WITH CAP STAMPED "HUGG L.S. 9750" OR "HUGG L.S. 11808" OR A CONCRETE NAIL WITH BRASS DISK STAMPED "HUGG L.S. 9750" OR "HUGG L.S. 11808" UNLESS OTHERWISE INDICATED HEREON.

VERTICAL DATUM IS BASED UPON THE ALBUQUERQUE CONTROL SURVEY BENCHMARK "9-F18", ELEVATION = 5212.23 (NAVD 1988)

PROJECT BASIS OF BEARING

BEARINGS ARE NEW MEXICO STATE PLANE GRID BEARINGS, CENTRAL ZONE -NAD83.

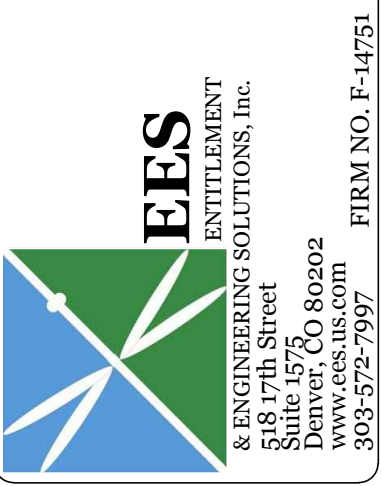
TABLE 1: BASIN SUMMARY RUNOFF TABLE
SITE ANALYSIS

BASIN	DESIGN POINT	CONTRIBUTING BASIN ACREAGE	10-YR Qpeak (CFS)	100-YR Qpeak (CFS)
A	2	0.33	0.95	1.46
B	1	0.20	0.62	0.92
OS1	-	0.20	0.51	0.82
OS2	BASIN C	0.03	0.06	0.11
OS3	3	0.08	0.14	0.26
C	4	0.45	1.26	1.94

SITE CURRENT USE:
HME MEDICAL SUPPLY TRACT A-1A (10/02/87, C34-169) ZONED C-3
HME MEDICAL SUPPLY TRACT A-1B
SAN BUSCO ADDITION (10/02/87, C34-169) ZONED C-3

No.	REVISION	BY	DATE

PRELIMINARY
NOT FOR
CONSTRUCTION



CIVIL CONSTRUCTION DOCUMENTS
DAVITA DIALYSIS CENTER - ALBUQUERQUE
5207 San Mateo Boulevard N.E.
CONCEPTUAL DRAINAGE AREA PLAN

PROJECT NO: DAV003.01
DESIGNED BY: KLR
DRAWN BY: KLR
DATE: 03/10/15