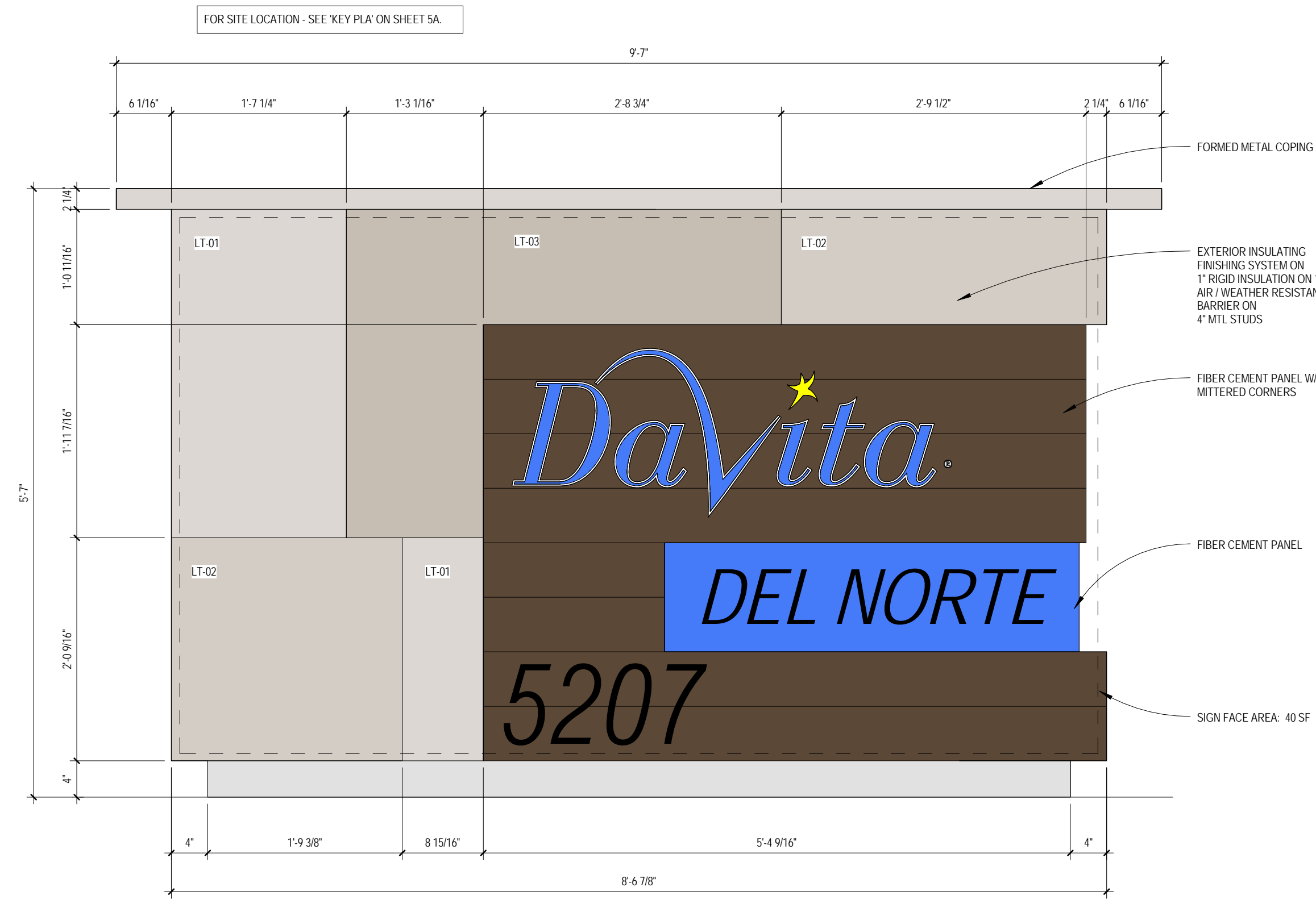


THIS DRAWING IS THE PROPERTY OF IN-FORM STUDIO - UNAUTHORIZED USE OF ANY KIND, INCLUDING USE ON OTHER PROJECTS, IS PROHIBITED.

3/11/2015 8:48:11 PM
5B 1" = 1'-0"

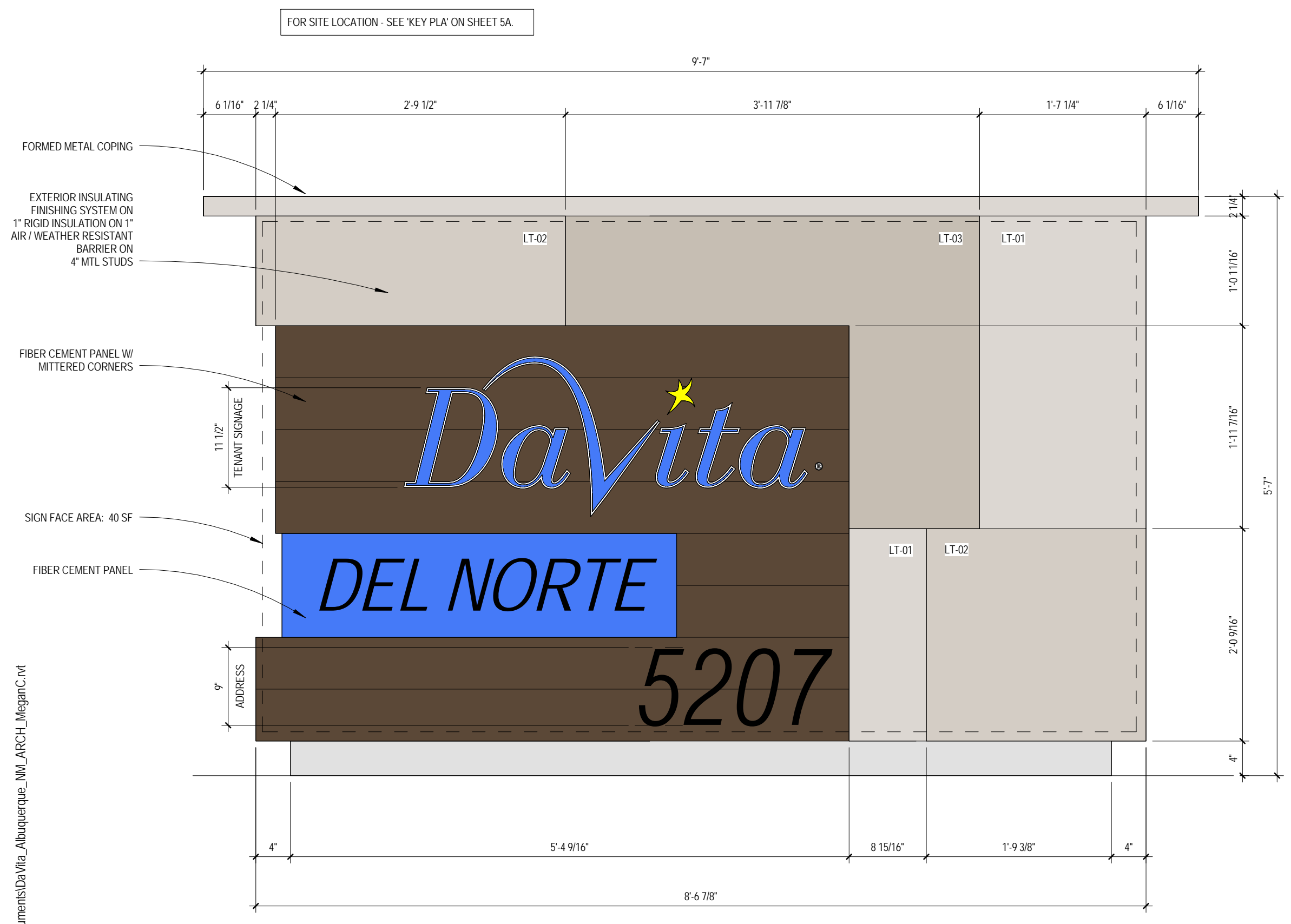


1 Monument Sign Front Elevation
5B 1" = 1'-0"

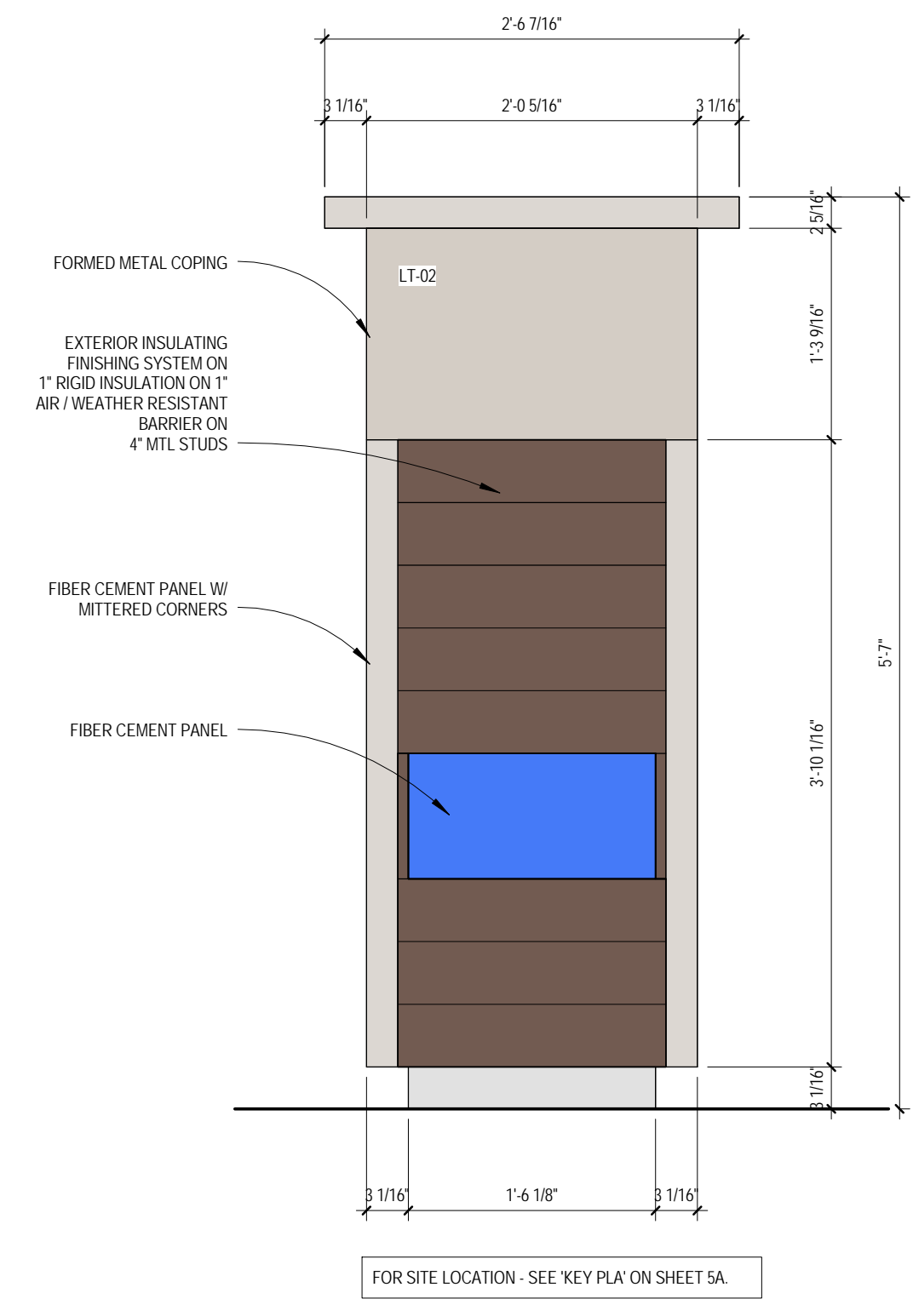
SIGN FACE AREA: MONUMENT SIGN 80 SF & BUILDING FACADE 30 SF = 110 SF TOTAL

MONUMENT SIGN MATERIALS PRODUCT SCHEDULE			
MATERIAL	DESCRIPTION / REMARKS	MANUFACTURER	FINISH
EIFS	STO THERM NEXT	STO	LT-01: STO LIMESTONE 2088 LT-02: STO LIMESTONE 9360 LT-03: STO LIMESTONE 9340 DK-01: STO LIMESTONE SW61521 DK-02: STO LIMESTONE SW6152 DK-03: STO LIMESTONE SW7034
FIBER CEMENT PANEL	NICHHA VINTAGE WOOD & ILLUMINATION	NICHHA	FCP-1: VINTAGE WOOD BARK FCP-2: ILLUMINATIONS DANTA BLUE PANTONE PMS 301
FORMED METAL COPING	ALUMINUM BREAK METAL COPING, FLASHING & COUNTERFLASHING W/ DRIP EDGE		CLEAR ANODIZED
METAL SURFACE FLASHING	ALUMINUM BREAK METAL FLASHING		CLEAR ANODIZED
LIGHTING	IN-GROUND MOUNTED TYPE FIXTURE		

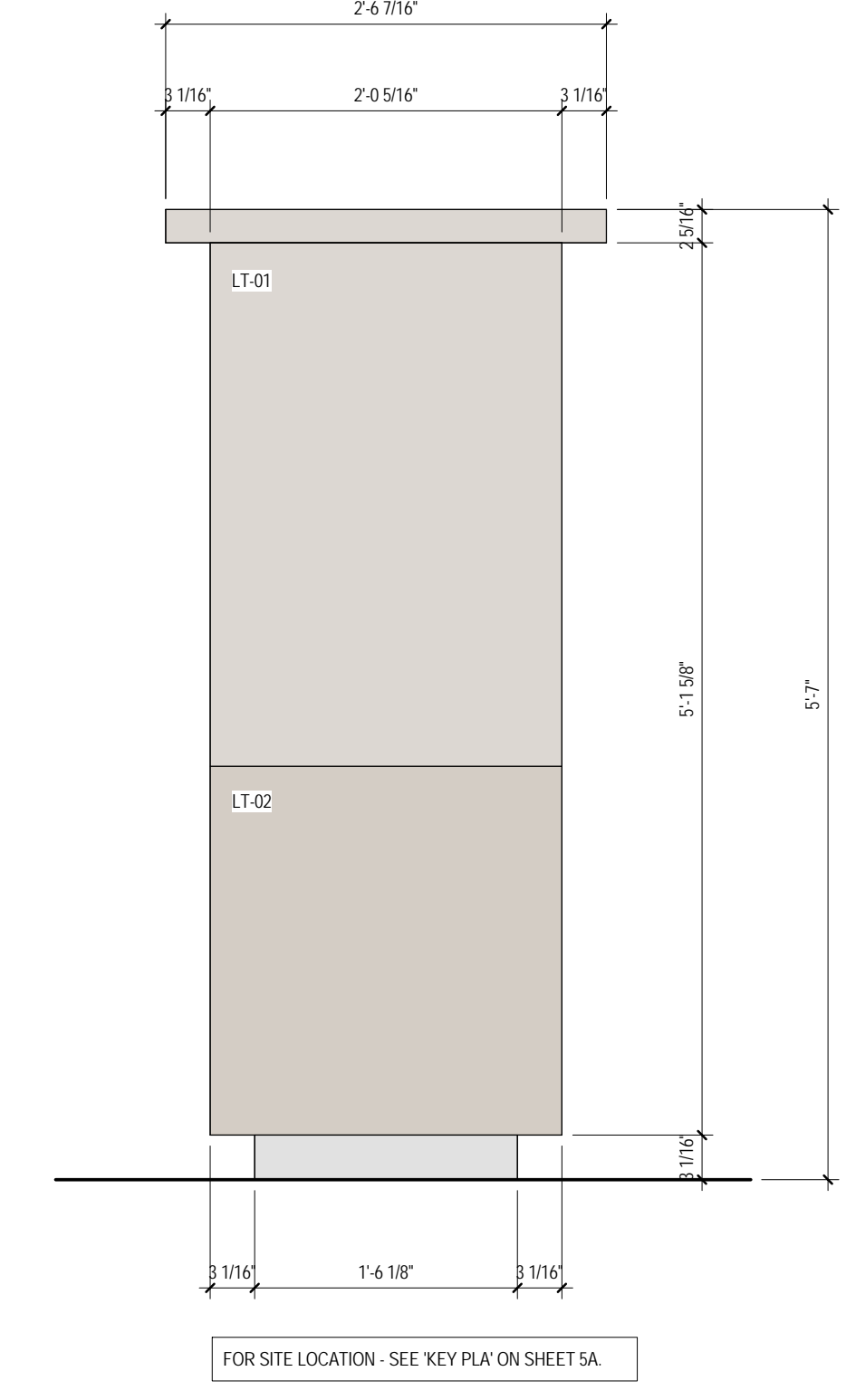
EIFS COLOR LEGEND	
FRONT	BACK
LT-01: STO LIMESTONE 2088 LT-02: STO LIMESTONE 9360 LT-03: STO LIMESTONE 9340	DK-01: STO LIMESTONE SW61521 DK-02: STO LIMESTONE SW6152 DK-03: STO LIMESTONE SW7034



2 Monument Sign Rear Elevation
5B 1" = 1'-0"



3 Monument Sign Side Elevation
5B 1" = 1'-0"



4 Monument Sign Side B Elevation
5B 1" = 1'-0"

CONSULTANTS

OWNER: Genesis KC Development, LLC
610 Davita Healthcare Partners, Inc.
2000 14th Street
Denver, CO 80202

PROJECT: DAVITA INC. DIALYSIS CENTER
Del Norte Albuquerque (Shell)
5207 San Mateo Blvd NE
Albuquerque, NM 87102
Facility No. 11224

DATE

ISSUED FOR:

STAMPS

PROJECT # 2014.2185.00

SHEET NO. 5B