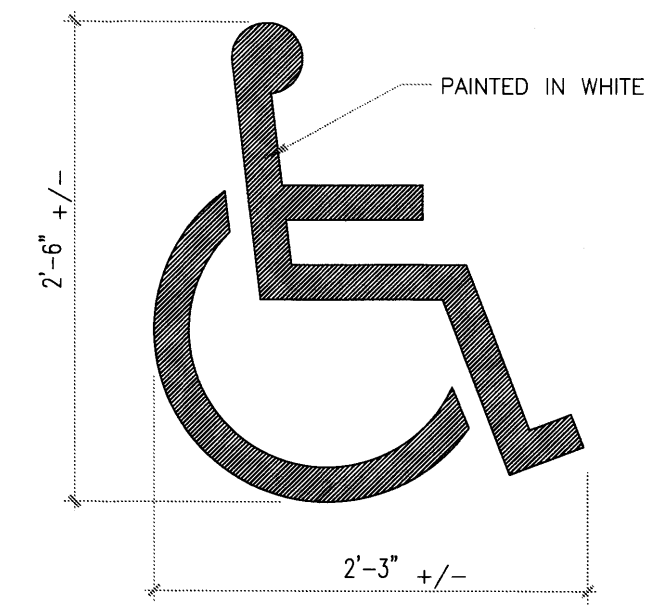


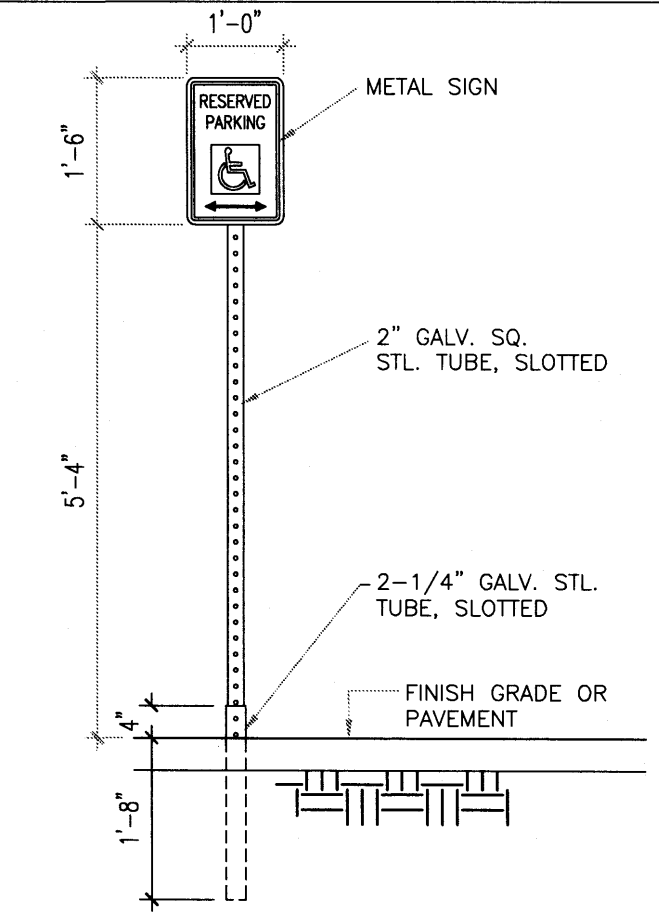
1 CURB DETAIL

SCALE: 1" = 1'-0"



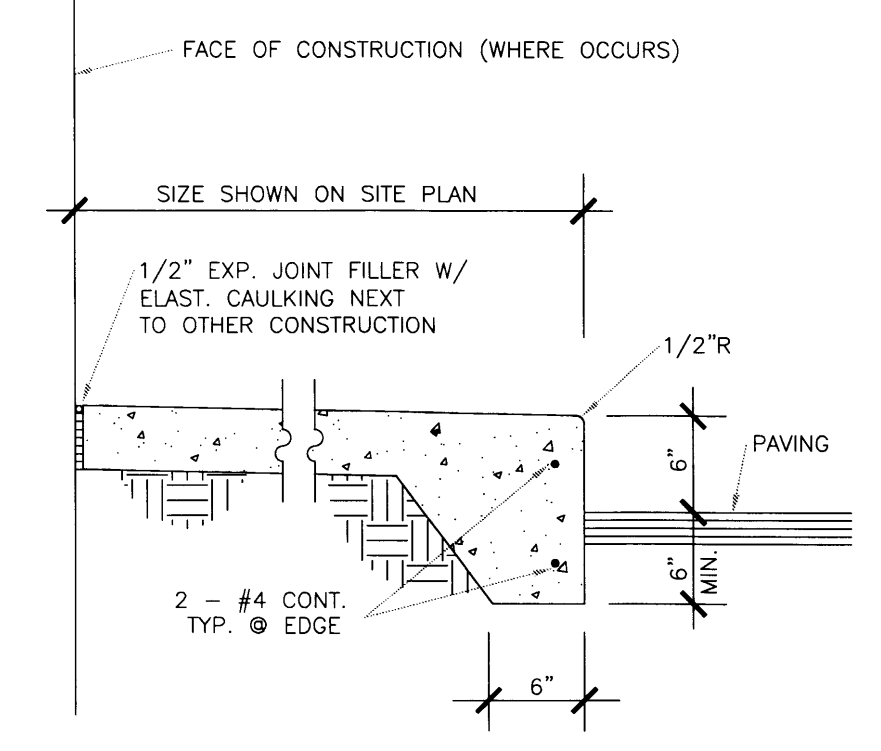
2 HC SYMBOL DETAIL

SCALE: 1" = 1'-0"



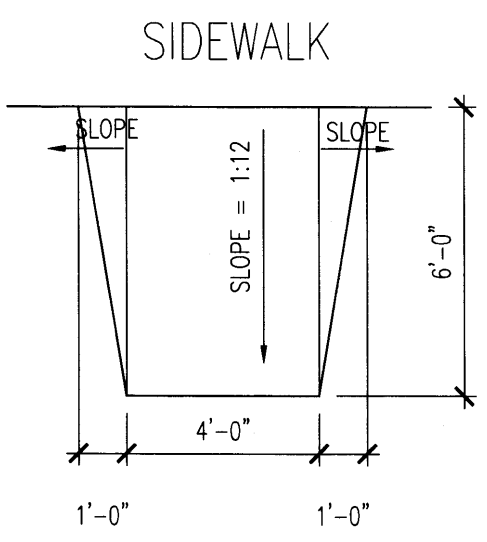
3 HC SIGN DETAIL

SCALE: 1/2" = 1'-0"



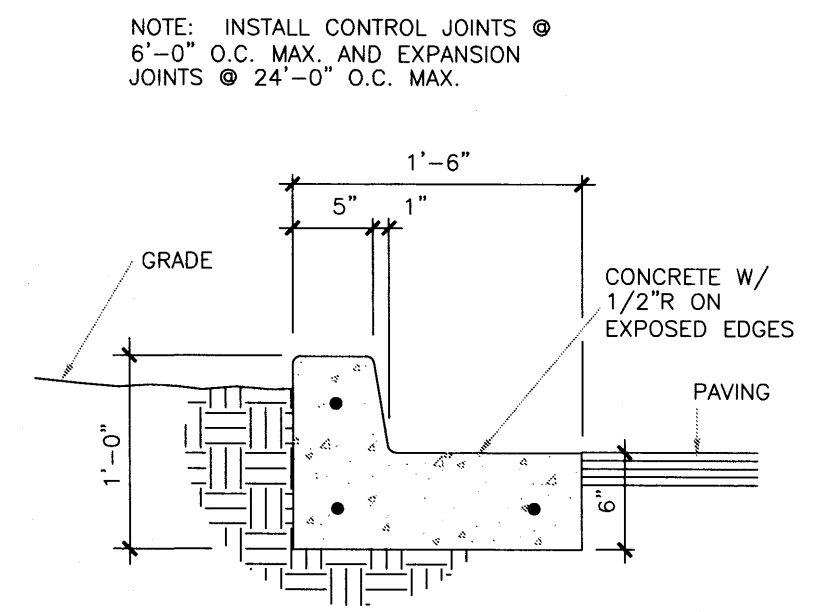
4 SIDEWALK DETAIL

SCALE: 1" = 1'-0"



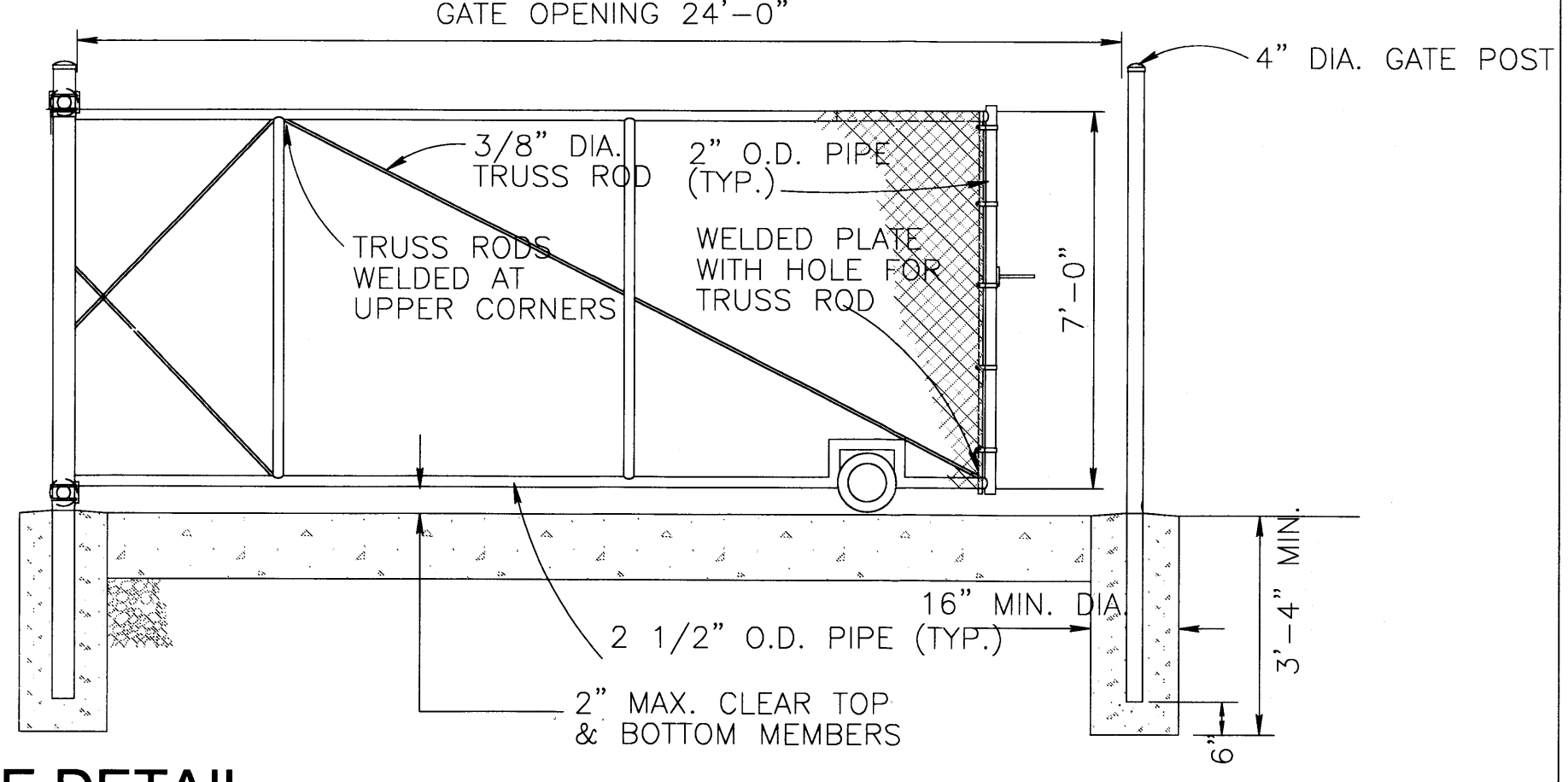
5 RAMP DETAIL

SCALE: 1/4" = 1'-0"



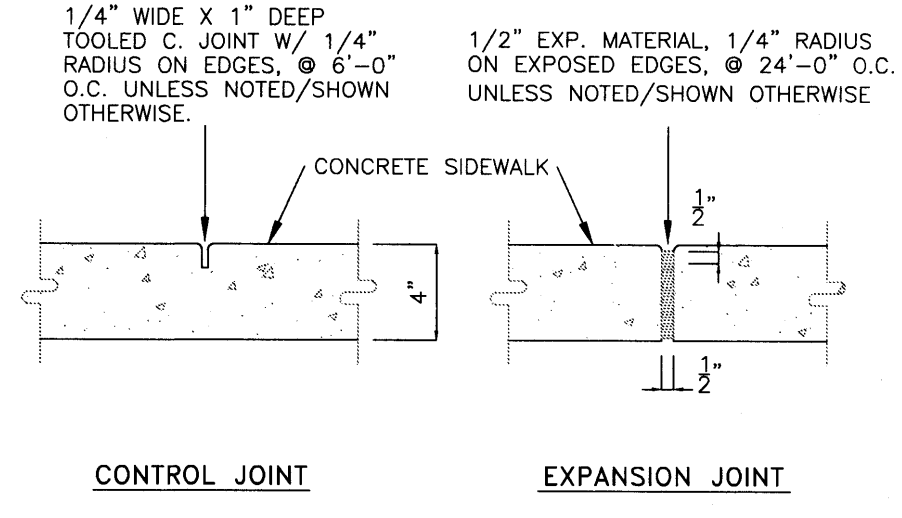
6 CURB DETAIL

SCALE: 1" = 1'-0"



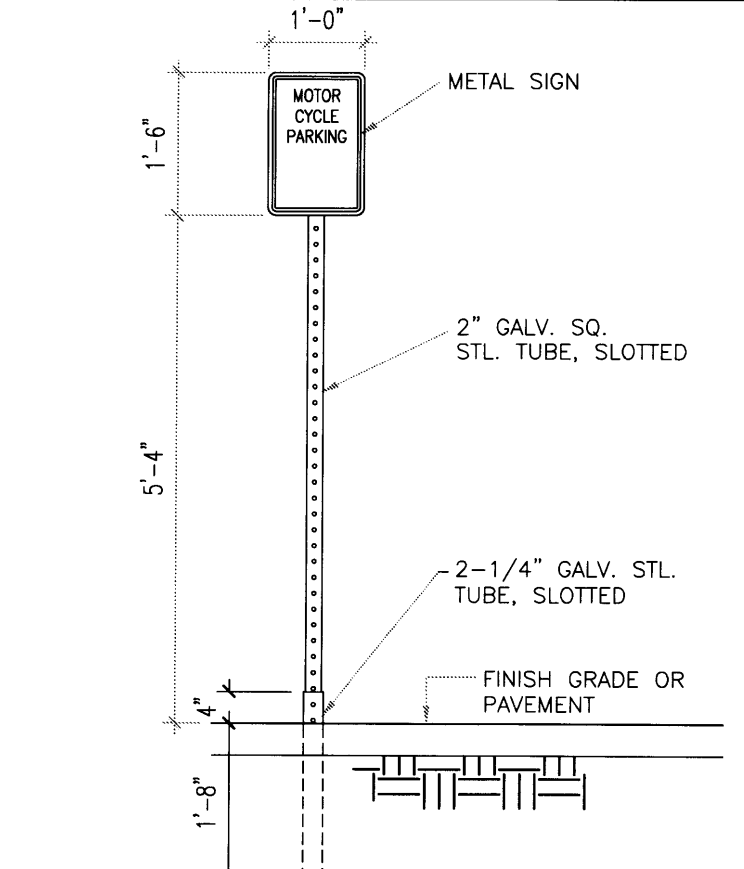
7 GATE DETAIL

SCALE: NTS



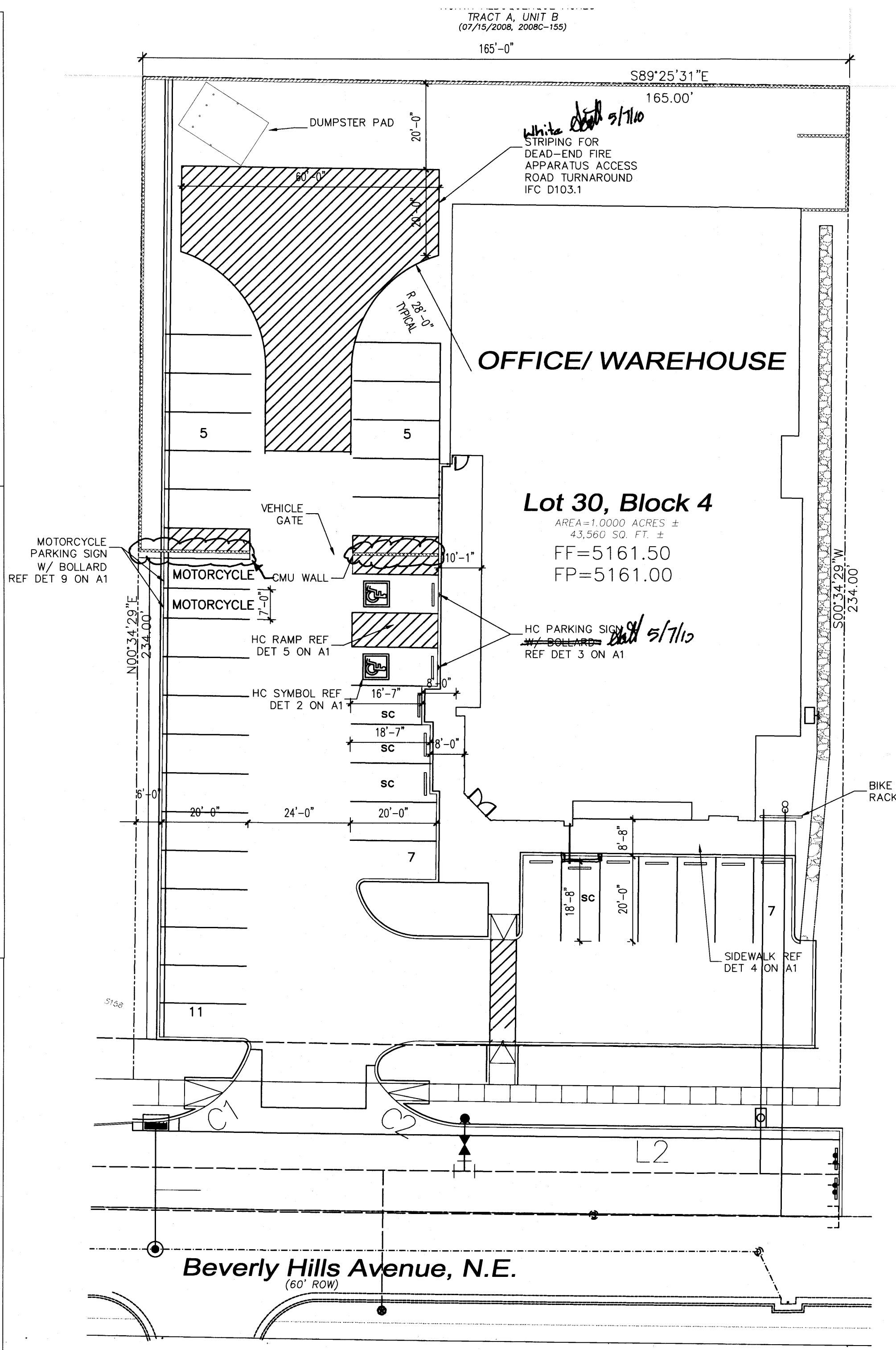
8 SIDEWALK DETAIL

SCALE: NTS



9 MOTORCYCLE PARKING

SCALE: 1/2" = 1'-0"



SITE PLAN

SCALE: 1" = 20'-0"



GENERAL NOTES

CONTRACTOR SHALL PROVIDE STEEL PIPE BOLLARDS AS PER DETAIL 10 ON A1 FOR PROTECTION OF ALL ABOVE GROUND UTILITIES IN OR ADJACENT TO DRIVE AREAS AND TO PROTECT PARKING AND TRAFFIC SIGNAGE.

CONTRACTOR TO COORDINATE LOCATION OF ALL UTILITY ENTRANCES INCLUDING BUT NOT LIMITED TO SANITARY SEWER, STORM SEWER, DOMESTIC WATER SERVICE, FIRE PROTECTION WATER SERVICE, ELECTRICAL AND TELEPHONE SERVICE. CONTRACTOR TO COORDINATE LOCATIONS IN SUCH A MANNER TO ASSURE PROPER DEPTHS ARE ACHIEVED, AS WELL AS COORDINATE WITH ANY UTILITY COMPANIES FOR APPROVED LOCATIONS AND SCHEDULING OF CONNECTION TO THEIR FACILITIES.

CONSTRUCTION SHALL COMPLY WITH ALL GOVERNING CODES AND BE CONSTRUCTED TO SAME.

CONTRACTOR SHALL PAINT HYDRANTS, BOLLARDS, AND "NO PARKING" STRIPE @ BUILDING ENTRANCE.

CONTRACTOR SHALL FOLLOW ALL LOCAL, STATE AND FEDERAL REGULATIONS IN DISPOSING OF DEMOLISHED MATERIALS REMOVED FROM THIS SITE.

ALL UNSURFACED AREAS DISTURBED BY GRADING OPERATIONS SHALL RECEIVE 4" OF TOPSOIL.

THE CONTRACTOR SHALL CONFORM TO ALL CITY, STATE AND FEDERAL DUST AND EROSION CONTROL REGULATIONS. THE CONTRACTOR SHALL PREPARE AND OBTAIN ANY NECESSARY DUST OR EROSION CONTROL PERMITS FORM REGULATORY AGENCIES.

THE CONTRACTOR SHALL PROMPTLY REMOVE ANY MATERIAL EXCAVATED WITHIN THE PUBLIC RIGHT OF WAY TO KEEP IT FROM WASHING OFF THE PROJECT SITE.

THE CONTRACTOR SHALL ENSURE THAT NO SOIL ERODES FROM THE SITE ON TO OTHER PROPERTIES BY CONSTRUCTING TEMPORARY EROSION CONTROL BERMS OR INSTALLING SILT FENCES AND WETTING THE SOIL TO KEEP IT FROM BLOWING.

WATERING, AS REQUIRED FOR CONSTRUCTION AND DUST CONTROL SHALL BE CONSIDERED INCIDENTAL TO CONSTRUCTION AND NO MEASUREMENT OF PAYMENT SHALL BE MADE THEREFOR. CONSTRUCTION AREAS SHALL BE WATERED FOR DUST CONTROL IN COMPLIANCE WITH GOVERNMENT ORDINANCES. THE CONTRACTOR SHALL BE RESPONSIBLE FOR LOCATING AND SUPPLYING WATER AS REQUIRED.

THE CONTRACTOR SHALL COMPLY WITH ALL APPLICABLE REGULATIONS CONCERNING CONSTRUCTION NOISE AND HOURS OF OPERATION.

DRS ADMINISTRATIVE
SITE PLAN AMENDMENT
PROJECT NO. 1007948
APPLICATION NO. 1044-10053
APPROVED: [Signature]
PLANNING DIRECTOR DATE 05/13/10

No	Revision Item	Date
1	MOVED TRASH ENCLOSURE LOCATION, MOVED FD HAMMERHEAD TO THE SOUTH, add. CMU wall, moved parking space location, sr. space size	12/3/09 5/5/10

SCOTT ANDERSON
ARCHITECT
7604 Rio Penasco NW Albuquerque, New Mexico 87120
Phone: (505) 401-7575 Email: andersonscott@comcast.net

HB CONSTRUCTION OFFICE BUILDING
1111 BEVERLY HILLS AVE, NE
ALBUQUERQUE, NM 87113

DRAWING TITLE		
SITE PLAN		
DESIGNED	PROJECT NO	A1
DRAWN	SCALE	
CHECKED	DRAWING NO	
REVIEWED		
DATE 5/5/10		

1007948 & drawer