

Amendment Site Development Plan

for  
Tract "A"  
Brentwood Park Complex

City of Albuquerque  
Bernalillo County, New Mexico

June 2010

Parking Data

Per Original Site Plan 2-78-59

30 Apartments x 2 Parking Spaces Each = 60 Regular Parking Spaces  
• 61 Parking Spaces Total

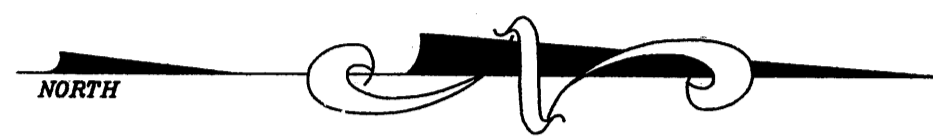
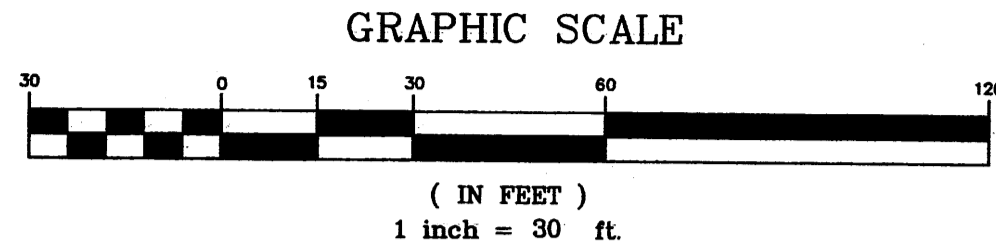
Per Existing Conditions

Tract A-1

• 8 Apartments x 2 Parking Spaces Each  
16 Parking Spaces Required - 18 Parking Spaces Provided

Tract A-2

• 22 Apartments x 2 Parking Spaces Each  
44 Parking Spaces Required - 46 Parking Spaces Provided

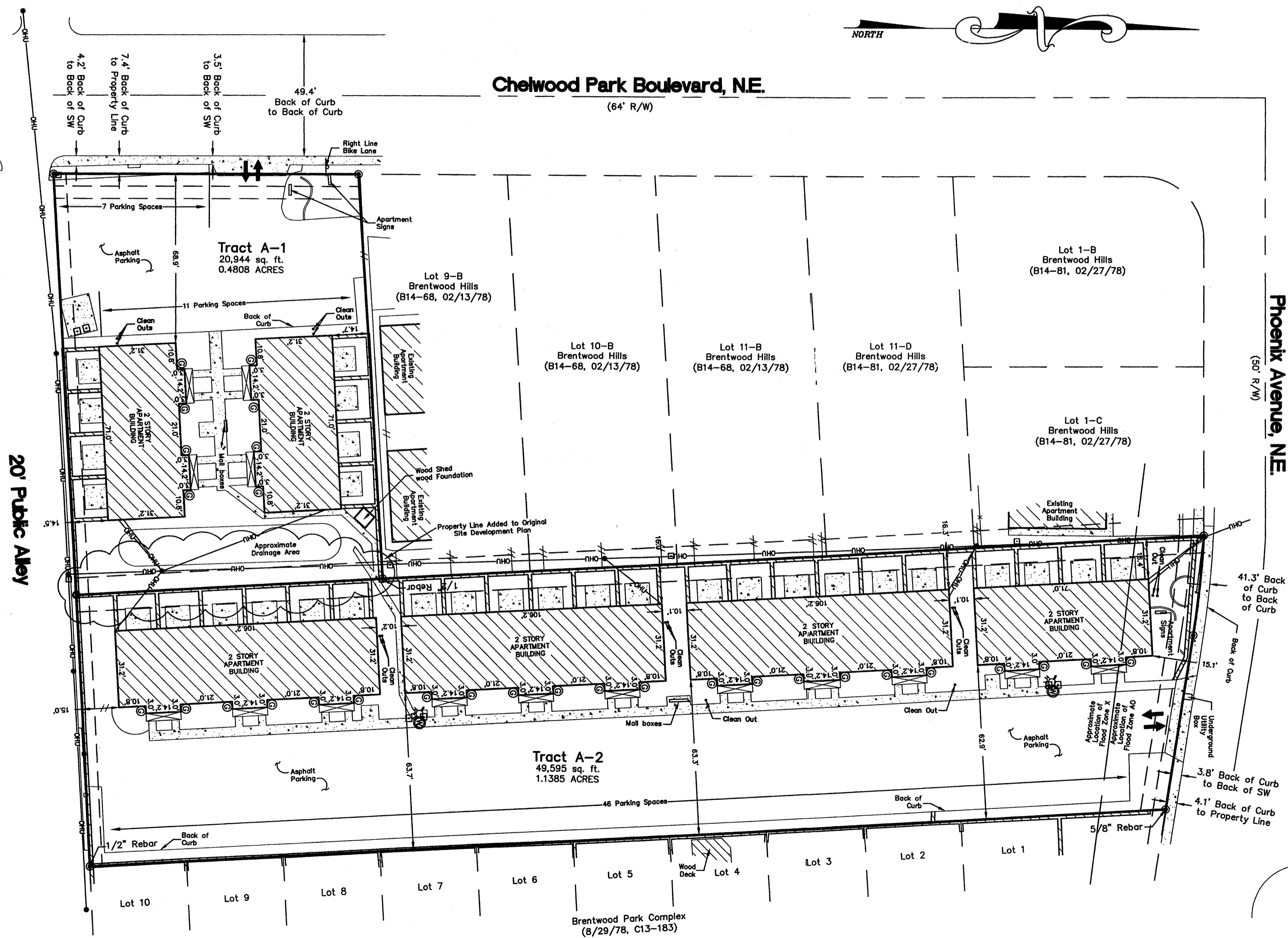


Legend

●	FOUND AS INDICATED
○	SET BATHEY MARKER "LS 14271"
⊙	WATER METER
⊙	GAS METER
⊙	FIRE HYDRANT
—	OVERHEAD UTILITY LINES
⊞	TRANSFORMER
—	GUY WIRE
□	UTILITY PEDESTAL
•	UTILITY POLE
↔	INGRESS/EGRESS
—	WOOD FENCE
—	WIRE FENCE
—	SIGN
⊞	COVERED AREA
□	BOLLARD
—	CHAIN LINK FENCE
▨	WALL
▨	CONCRETE AREA
—	WROUGHT IRON FENCE

Chelwood Park Boulevard, N.E.

(64' R/W)



20' Public Alley

Phoenix Avenue, NE  
(50' R/W)

**ADMINISTRATIVE AMENDMENT**  
FILE # 10-10078 PROJECT # 1008357  
*subdivide property into 2 tracts -*  
*Tract A-1 & A-2*

---

*Marrone* 7/15/10  
APPROVED BY DATE