

**SITE DEVELOPMENT PLAN  
TRACTS D-1  
CANYON ACRES SUBDIVISION  
SECTION 27, T. 10 N., R. 4 E., N.M.P.M.  
CITY OF ALBUQUERQUE  
BERNALILLO COUNTY, NEW MEXICO  
NOVEMBER 2010**

40 25 10 0 15 30 45 60



1" = 60'  
PROJECT NO. CANYON ACRES SUBDIVISION  
DRAWN BY: AT /CD  
ZONE ATLAS: L-22-Z  
13031CENTRAL.CR5



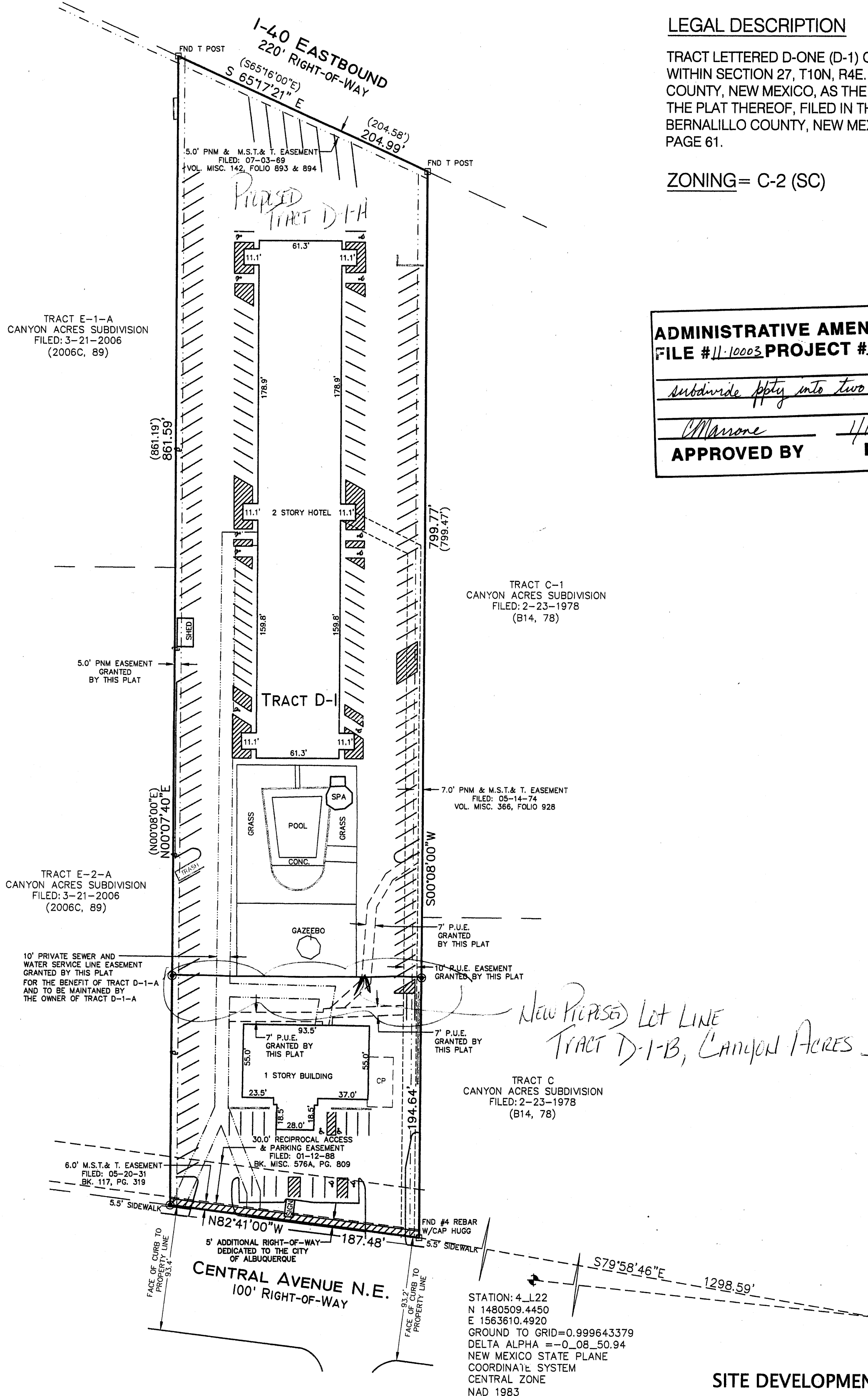
**LEGAL DESCRIPTION**

TRACT LETTERED D-ONE (D-1) OF THE CANYON ACRES SUBDIVISION, WITHIN SECTION 27, T10N, R4E., N.M.P.M., ALBUQUERQUE, BERNALILLO COUNTY, NEW MEXICO, AS THE SAME IS SHOWN AND DESIGNATED ON THE PLAT THEREOF, FILED IN THE OFFICE OF THE COUNTY CLERK OF BERNALILLO COUNTY, NEW MEXICO ON NOVEMBER 17, 1972, IN BOOK BY PAGE 61.

**ZONING= C-2 (SC)**

1008447

<b>ADMINISTRATIVE AMENDMENT</b>	
FILE #11-10003 PROJECT #1008447	
<i>subdivide ppty into two tracts</i>	
<i>CMassone</i>	<i>1/19/11</i>
<b>APPROVED BY</b>	<b>DATE</b>



*New Proposed Lot Line  
TRACT D-1-B, CANYON ACRES SUBD.*

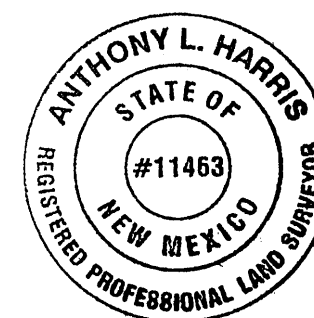
STATION: 8\_L22  
N 1480177.4190  
E 1566414.8150  
GROUND TO GRID=0.999638988  
DELTA ALPHA =-0.08\_31.54  
NEW MEXICO STATE PLANE  
COORDINATE SYSTEM  
CENTRAL ZONE  
NAD 1983

STATION: 4\_L22  
N 1480509.4450  
E 1563610.4920  
GROUND TO GRID=0.999643379  
DELTA ALPHA =-0.08\_50.94  
NEW MEXICO STATE PLANE  
COORDINATE SYSTEM  
CENTRAL ZONE  
NAD 1983

**SITE DEVELOPMENT PLAN FOR SUBDIVISION**

**MONUMENT LEGEND**

- ⊕ - FOUND CONTROL STATION AS NOTED
- - FOUND MONUMENT AS NOTED
- ⊙ - SET 1/2" REBAR w/ CAP STAMPED "PS 11463" UNLESS OTHERWISE NOTED



*Anthony L. Harris* 12-27-10  
ANTHONY L. HARRIS  
NEW MEXICO PROFESSIONAL SURVEYOR, 11463 DATE

CANYON ACRES SUBDIVISION

**T10N R4E SEC. 27**