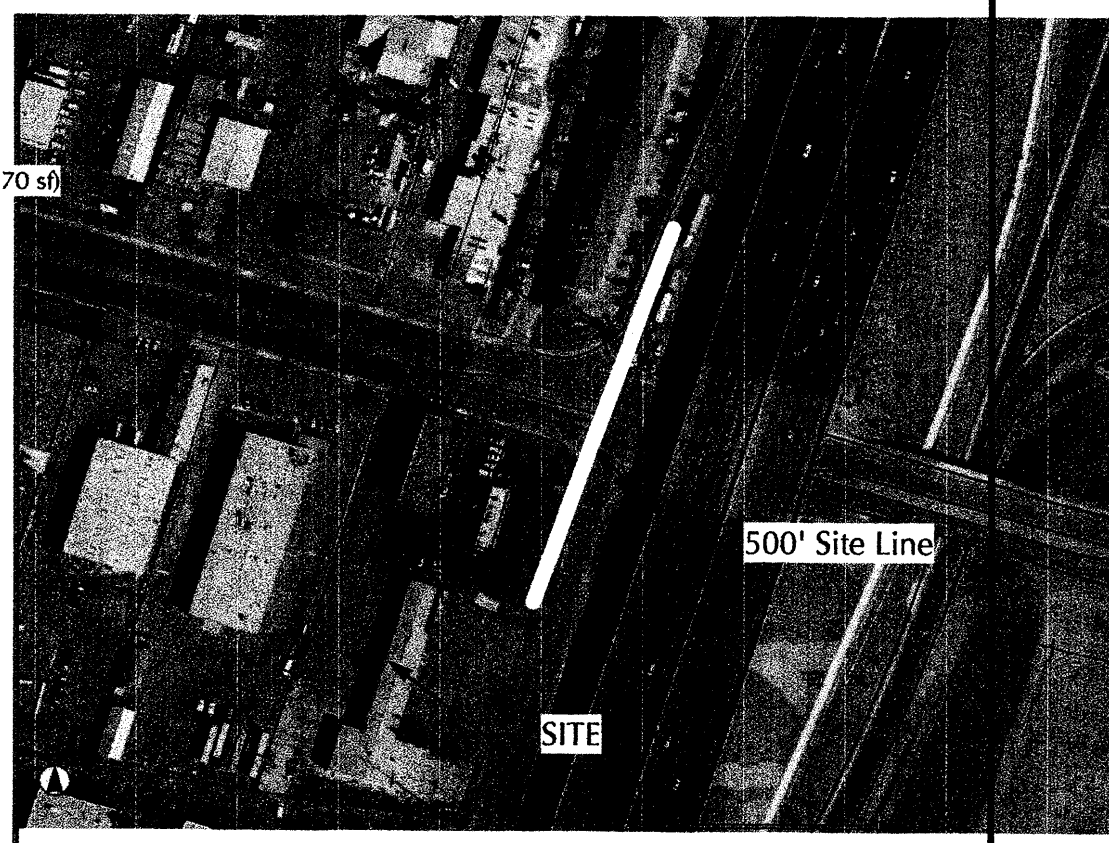
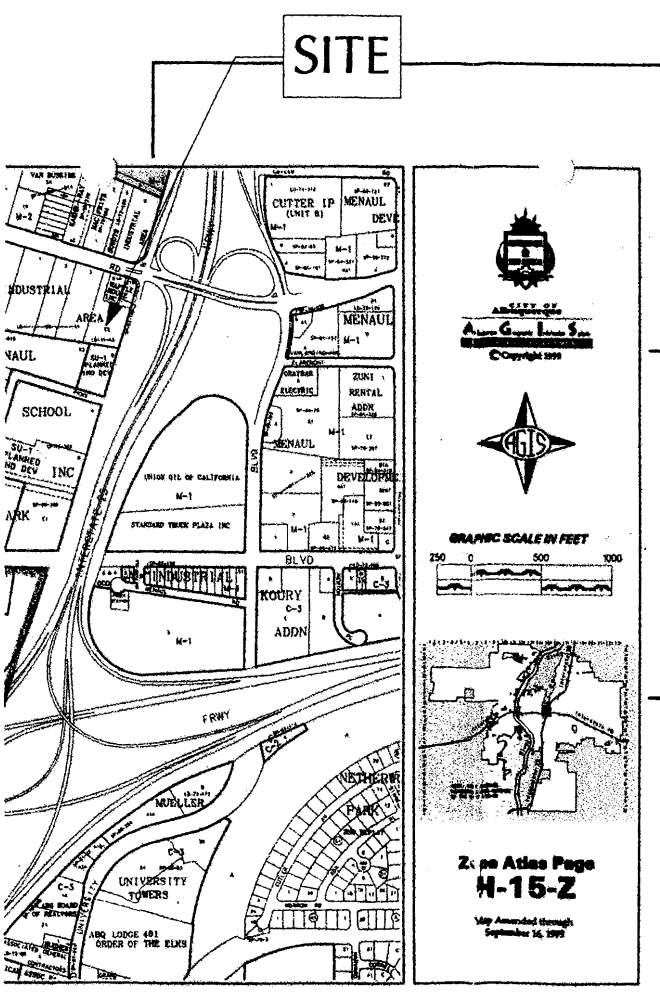
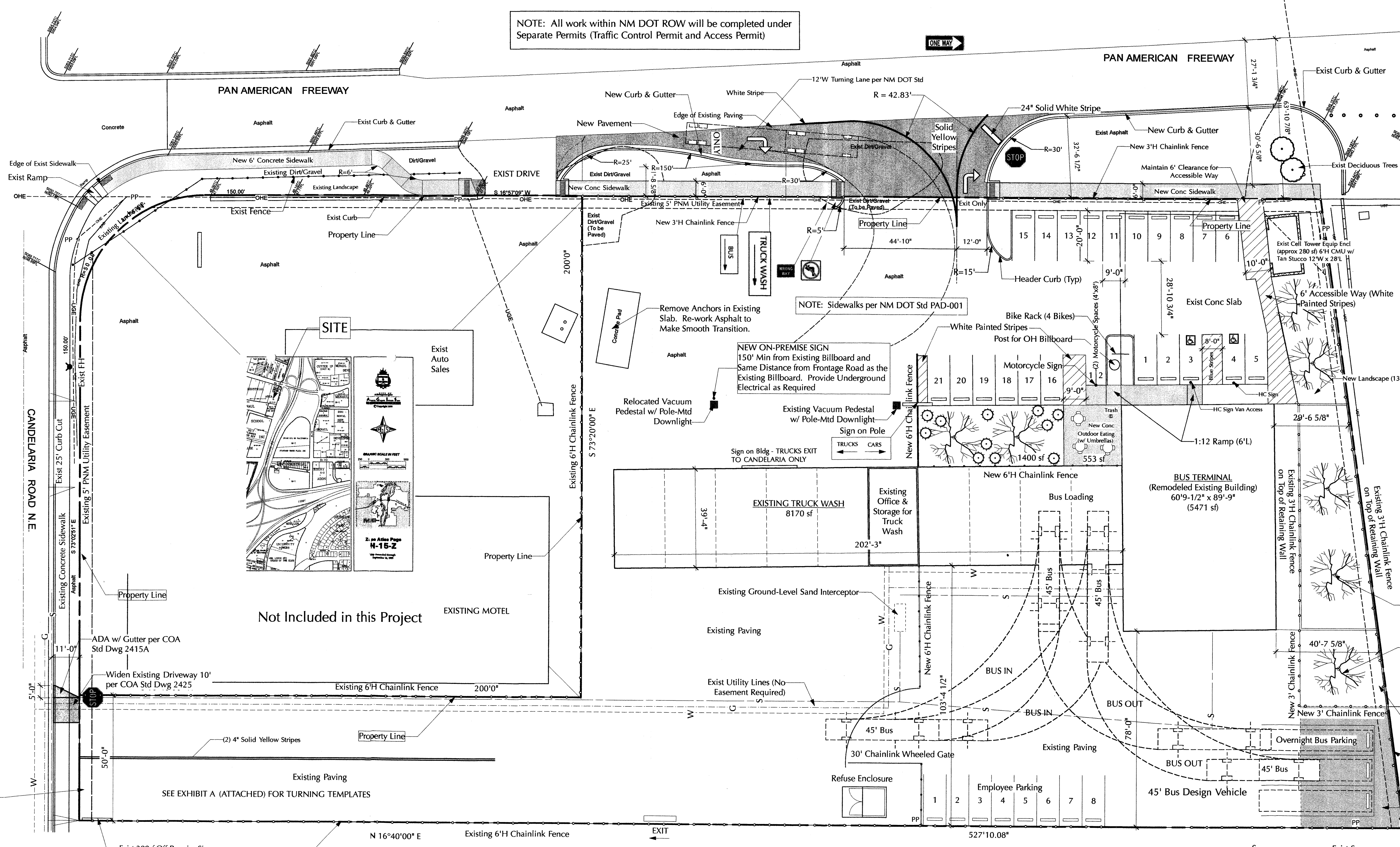


NOTE: All work within NM DOT ROW will be completed under Separate Permits (Traffic Control Permit and Access Permit)

PROJECT NUMBER 1008695
 Application Number 11-40008
 This plan is consistent with the specific Site Development Plan approved by the Environmental Planning Commission (EPC) 4-14-11 and the Findings and Conditions in the Official Notification of Decision are satisfied.
 Is an Infrastructure List required? () Yes () No. If yes, then a set of approved DRC plans with a work order is required for any construction within Public Right-of-Way or for construction of public improvements.
 DRB SITE DEVELOPMENT PLAN SIGNOFF APPROVAL
 Traffic Engineer, Transportation Division 07-13-11
 ABCWUA 07/13/11
 Parks and Recreation Department 7-13-11
 City Engineer 7-13-11
 Environmental Health Department (conditional)
 Solid Waste Management
 Chairperson, Planning Department 7-13-11

1008695



Not Included in this Project

LANDSCAPE CALCULATION
 Lot Area 87,556 sf
 Area of Existing Buildings (14,071) sf
 Off-Street Parking (8,540) sf
 Net Lot Area 64,945 sf
 Landscaping Req'd under Current Ordinance 64,945 x 15% = 7,794 sf
 Landscaping Provided 5,905 sf

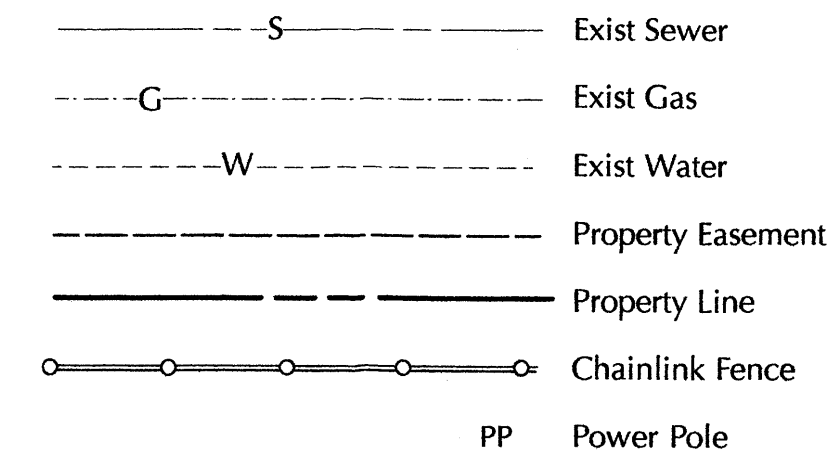
- LANDSCAPE NOTES**
- All plant material to be watered by hose. Incorporate Roof Run-Off where technically possible.
 - Owner agrees to maintain all landscaping and promptly replace dead plant material.
 - There is no high-water-use turf.
 - Landscaping at maturity will cover 75% of required landscape area.
 - Landscaping to comply with City of Albuquerque Water Ordinance Art 6-1-1-1.
 - Gravel over Barrier = 3/4" Gravel Mulch over Landscape Fabric.
 - See City Standard Planting Detail - Sheet 2.

- LANDSCAPE LEGEND**
- English Lavender - 1 Gal
 - Existing Flowering Deciduous
 - Desert Willow- 3/4" (18' Max Ht)
 - Mulch - Gravel over Barrier

OFF-STREET PARKING CALCULATION
 There is no standard requirement for off-street parking for a Transit Facility
 (21) 9'x20' Customer Spaces Provided, including (1) H/C (1) HC Van Accessible
 (8) 9'x20' Employee Spaces
 (2) 4'x8' Motorcycle Space
 (1) Bike Rack (4 Bikes)

The Environmental Planning Commission delegates to the Planning Director authority to adjust the parking required pursuant to the Administrative Approval procedure.

SITE LIGHTING
 Site lighting is Wall-Mounted on Bus Terminal. Lighting will Meet Standards of 14-16-39 Area Lighting Regulations

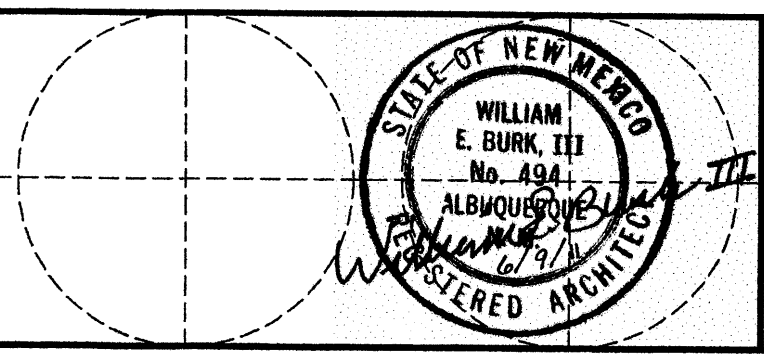


DESIGN CRITERIA
 IBC 2006
 Zoning Atlas - p. H-15
 Zoning - SU-1/M-2 and Transit Facility
 Occupancy Class - A-3 (Bus Station)
 Construction Type - V-B
 TOTAL REMODELED BUILDING 5,471 sf
 Existing Truck Wash 8,170 sf

LEGAL DESCRIPTION
 Tract E-2, Sundt's Industrial Area, Albuquerque, NM containing 2.014 Acres

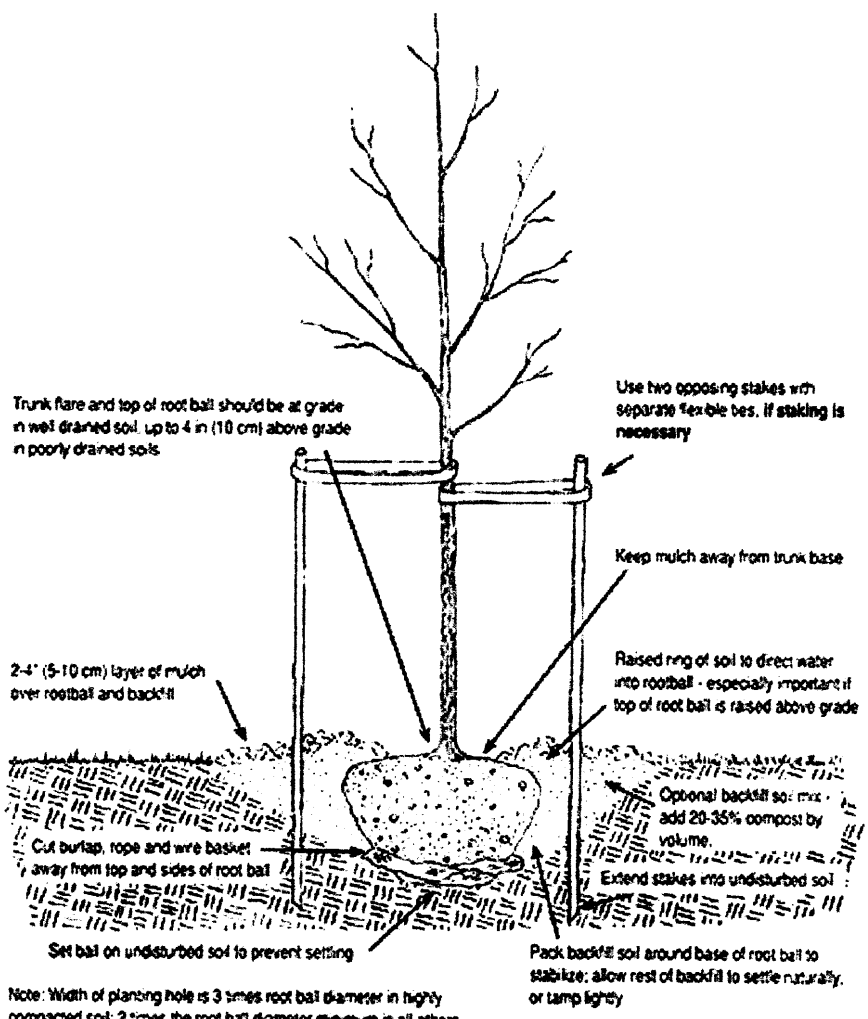
CONTRACTORS SHALL VERIFY ALL DIMENSIONS AND EXISTING CONDITIONS

No.	Date	Issue Notes
D	7/7/11	Revisions per COA Traffic Engineer
C	7/1/11	Sidewalk & Candelaria Entrance/Exit Revised per COA Traffic Engineer
B	6/26/11	Revisions per NM DOT
A	6/13/11	Revised per DRB 5/25/11

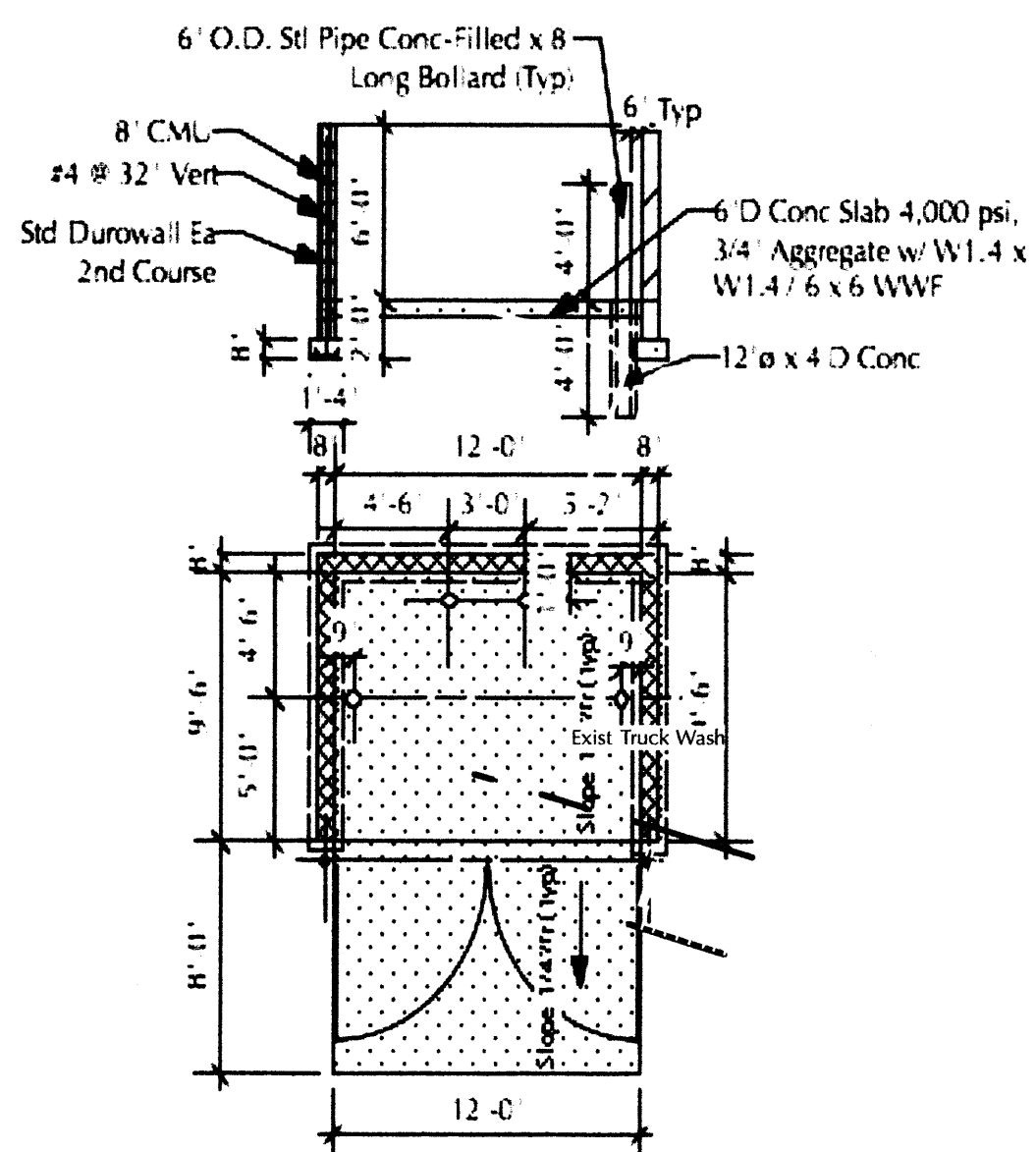


Design Firm
 BILL BURK, third, ARCHITECT
 9617 La Playa NE, ABQ, NM 87111
 505-292-6566 • Fax 505-294-7232
 Email - Bburkii@Earthlink.net
Consultant
 Electronic Copy of Final Document
 Original Sealed Document w/ Wm E Burk III
 NM #494

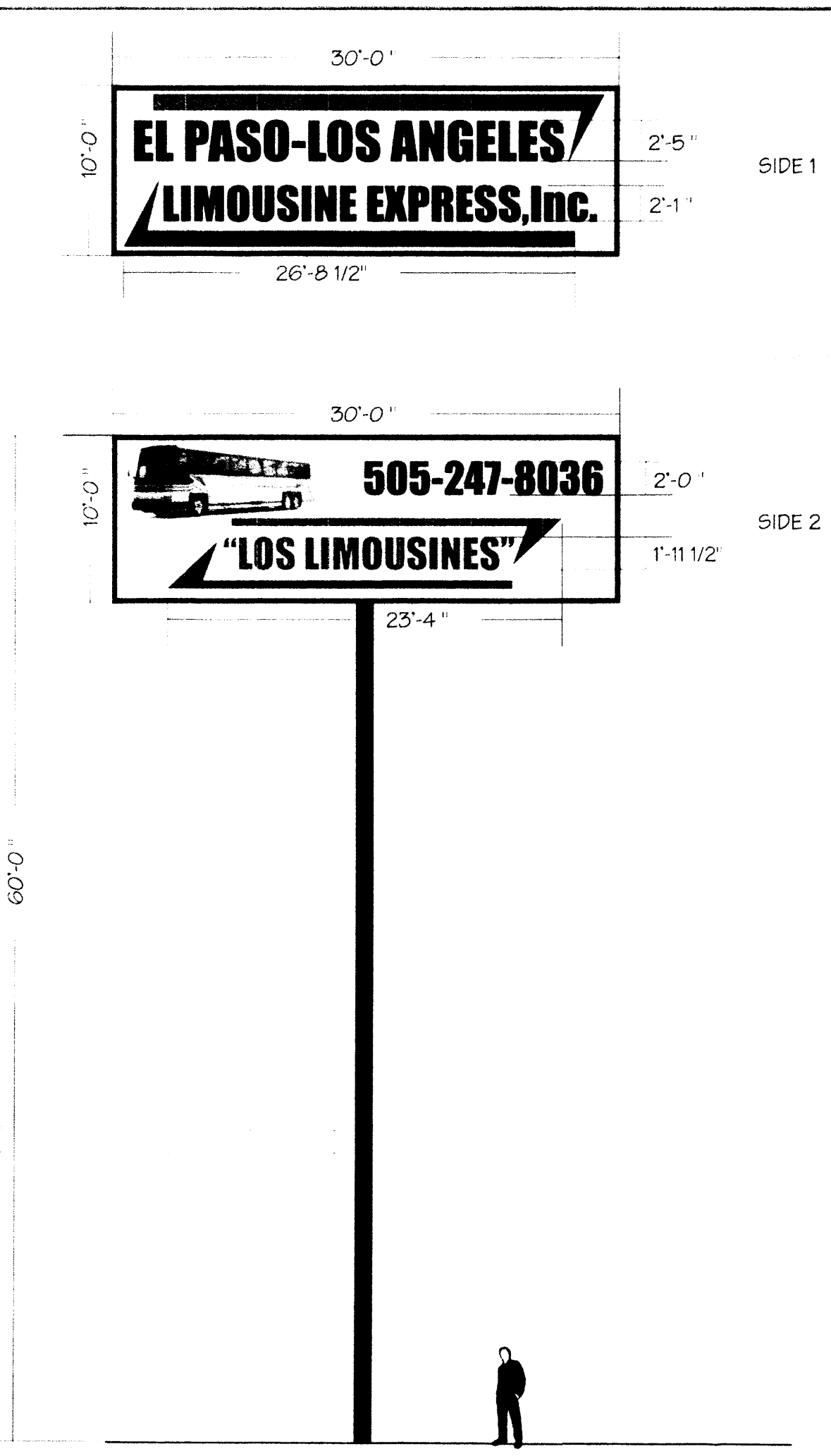
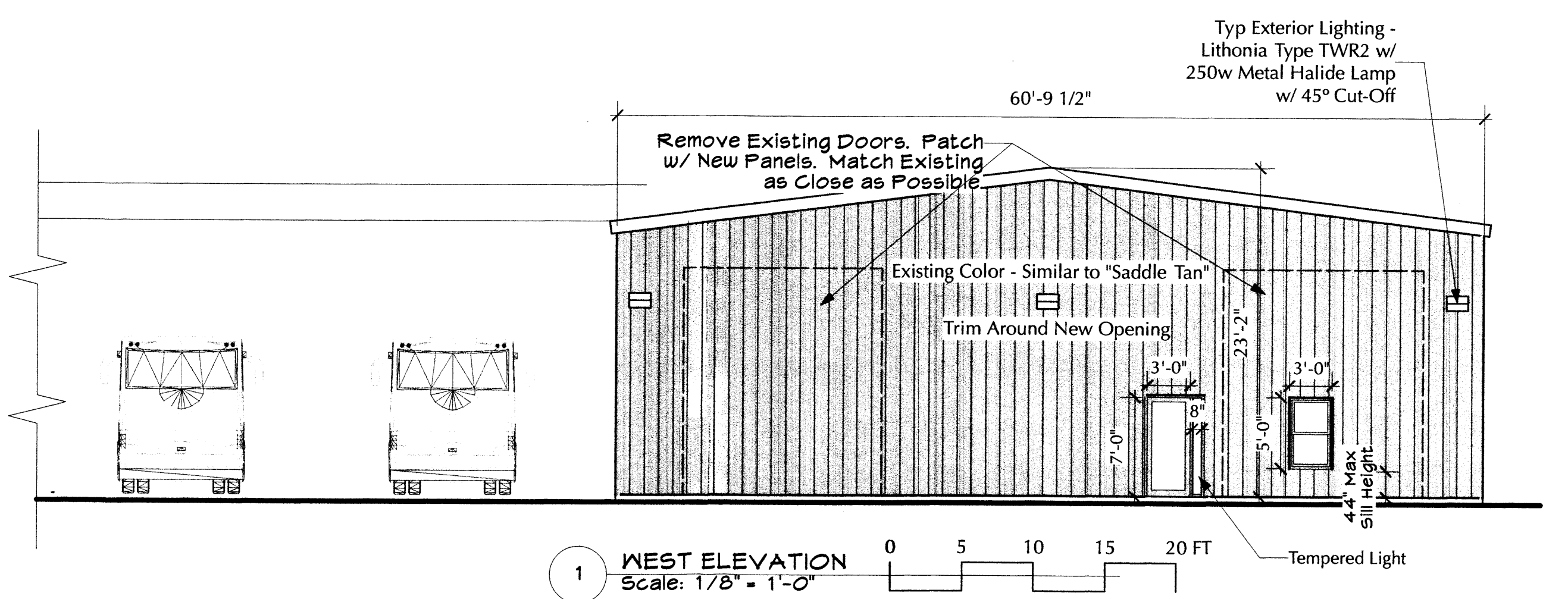
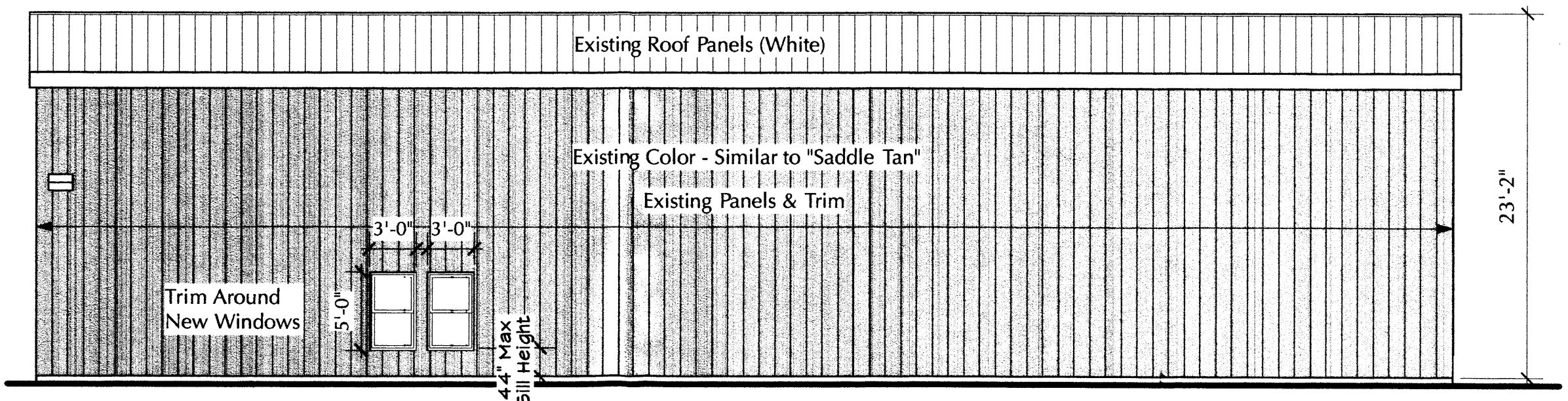
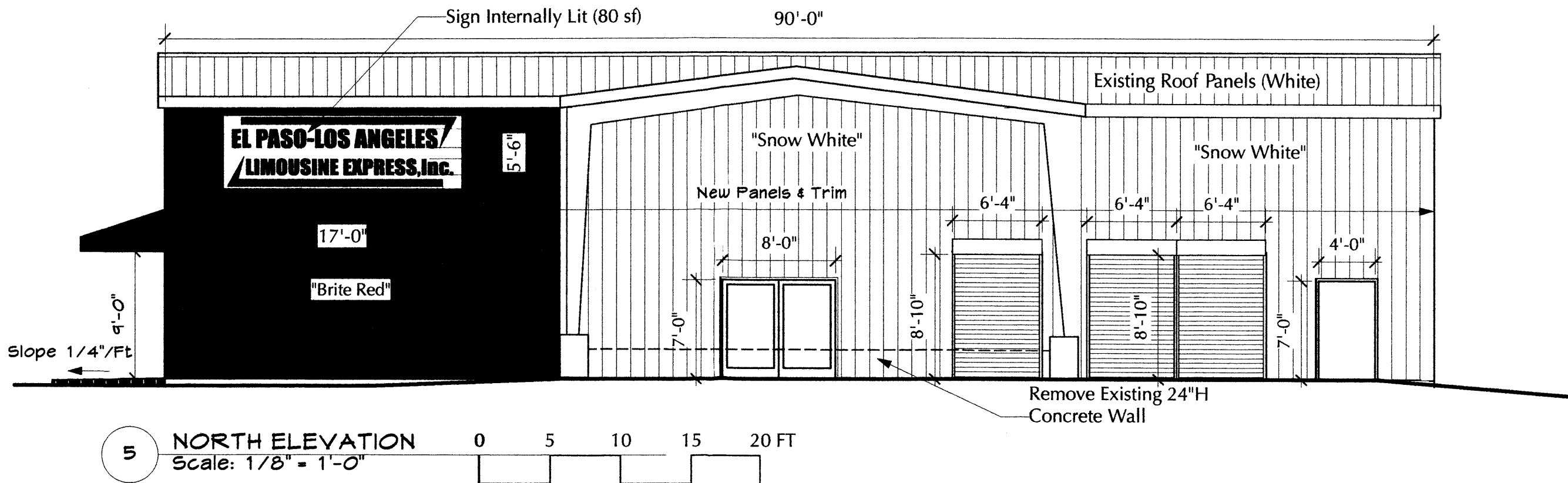
Project Title	Project Manager	Project ID
REMEDIATE EXISTING TRUCK WASH FACILITY for El Paso-Los Angeles Limousine Express, Inc. 2901 Pan American Fwy NE, ABQ, NM	Bill Burk	#09-29
Drawn By	Scale	As Shown
Chris Burk		
Date	Drawing No.	1 of 2
6/9/11		
CAD File Name		



CITY STD PLANTING DETAIL
No Scale



GARBAGE ENCLOSURE DETAILS
Scale: 1/8" = 1'-0"



NEW ILLUMINATED POLE SIGN
Scale: 1"=8'

D/F ILLUMINATED POLE SIGN
WHITE LEXAN FACES OVERLAYED
WITH CAL ON 33 RED, BLACK AND 26 GREEN
3" RETAINER PAINTED BLACK
1/2" POLE, PAINTED BLACK
DIGITAL PRINT OF BUS PICTURE PRINTED ON TRANSLUCENT VINYL

CONTRACTOR SHALL VERIFY ALL DIMENSIONS AND EXISTING CONDITIONS

SCALE: 1/8" = 1'-0"

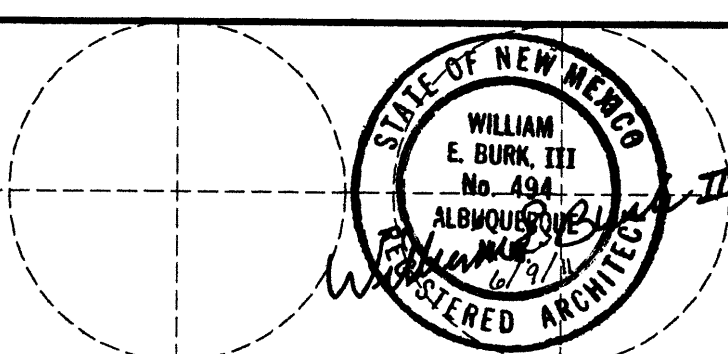
SECTION: 17514 1-5-11

SHEETS: A BACA

APPROVAL:

SignArt
OF NEW MEXICO, INC.

No.	Date	Issue Notes
B	6/26/11	Revisions per NM DOT
A	6/13/11	Revised per DRB 5/25/11



Design Firm: **BILL BURK, third, ARCHITECT**
9617 La Playa NE, ABQ, NM 87111
505-292-6566 • Fax 505-294-7232
Email - Bburkiii@Earthlink.net

Consultant: Electronic Copy of Final Document
Original Sealed Document w/ Wm E Burk III
NM #494

CONTRACTORS SHALL VERIFY ALL DIMENSIONS AND EXISTING CONDITIONS			
Project Title	REMODEL EXISTING TRUCK WASH FACILITY for El Paso-Los Angeles Limousine Express, Inc. 2901 Pan American Fwy NE, ABQ, NM	Project Manager	Bill Burk
Drawn By	Chris Burk	Scale	As Shown
Reviewed By		Drawing No.	2
Date	6/9/11		of
CAD File Name			2