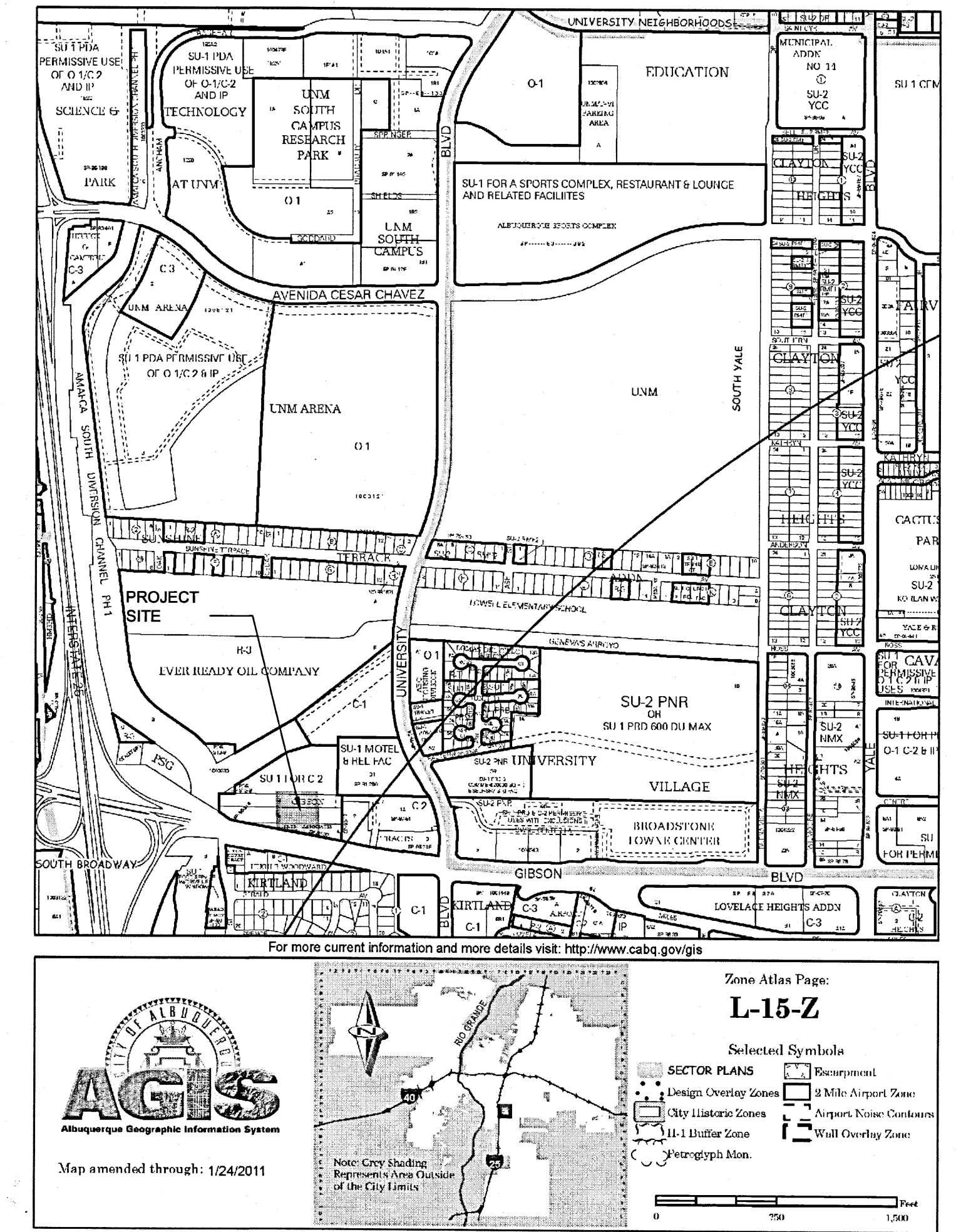


Index of Drawings

- 1 of 9 GI-100 COVER SHEET
- 2 of 9 AS-101 SITE PLAN
- 3 of 9 A101 UNM PLAT
- 4 of 9 AS-501 SITE DETAILS
- 5 of 9 LS-101 LANDSCAPE PLAN
- 6 of 9 C-101 GRADING AND DRAINAGE
- 7 of 9 AE-201 BUILDING ELEVATIONS
- 8 of 9 AE-202 BUILDING ELEVATIONS
- 9 of 9 C-102 UTILITY PLAN

VICINITY MAP



 **City of Albuquerque**
Capital Implementation Program

Owner
COA Fire Department

FIRE STATION 2
DRB SUBMITTAL 12.16.2011

ARCHITECT

DEKKER/PERICH/SABATINI
 7601 JEFFERSON ST. NE SUITE 100
 ALBUQUERQUE, NM 87109
 (505) 761-9700
 FAX: (505) 761-4222

LANDSCAPE ARCHITECT

DEKKER/PERICH/SABATINI
 7601 JEFFERSON ST. NE SUITE 100
 ALBUQUERQUE, NM 87109
 (505) 761-9700
 FAX: (505) 761-4222

CIVIL ENGINEER

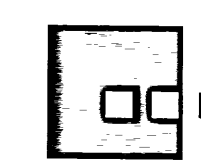
MOLZEN CORBIN
 2701 MILES ROAD SE
 ALBUQUERQUE, NM 87109
 (505) 242-5700
 FAX: (505) 242-0673

ELECTRICAL ENGINEER

BRIDGERS & PAXTON
 4600-C MONTGOMERY BLVD. NE
 ALBUQUERQUE, NM 87109
 (505) 883-4111
 FAX: (505) 888-1436

MECHANICAL ENGINEER

BRIDGERS & PAXTON
 4600-C MONTGOMERY BLVD. NE
 ALBUQUERQUE, NM 87109
 (505) 883-4111
 FAX: (505) 888-1436

 **Dekker/Perich/Sabatini**
 architecture • interiors • landscape • planning • engineering
 7601 Jefferson NE, Suite 100 Albuquerque, NM 87109
 505 761-9700 fax 761-4222

REV.	SHEETS	CITY ENGINEER	DATE	USER DEPARTMENT	DATE	USER DEPARTMENT	DATE
ARCHITECTS STAMP & SIGNATURE		APPROVED		ENGINEER		DATE	
		DRC Chairman					
		Transportation					
		Water/Wastewater					
		Hydrology					
		C I P					
		Constr. Mngmt.					
		Constr. Coord.				CITY ENGINEER DATE	
PROJECT NUMBER 8006.00				DWG. GI-100		SHEET 1 OF 9	

DRB SUBMITTAL - NOT FOR CONSTRUCTION

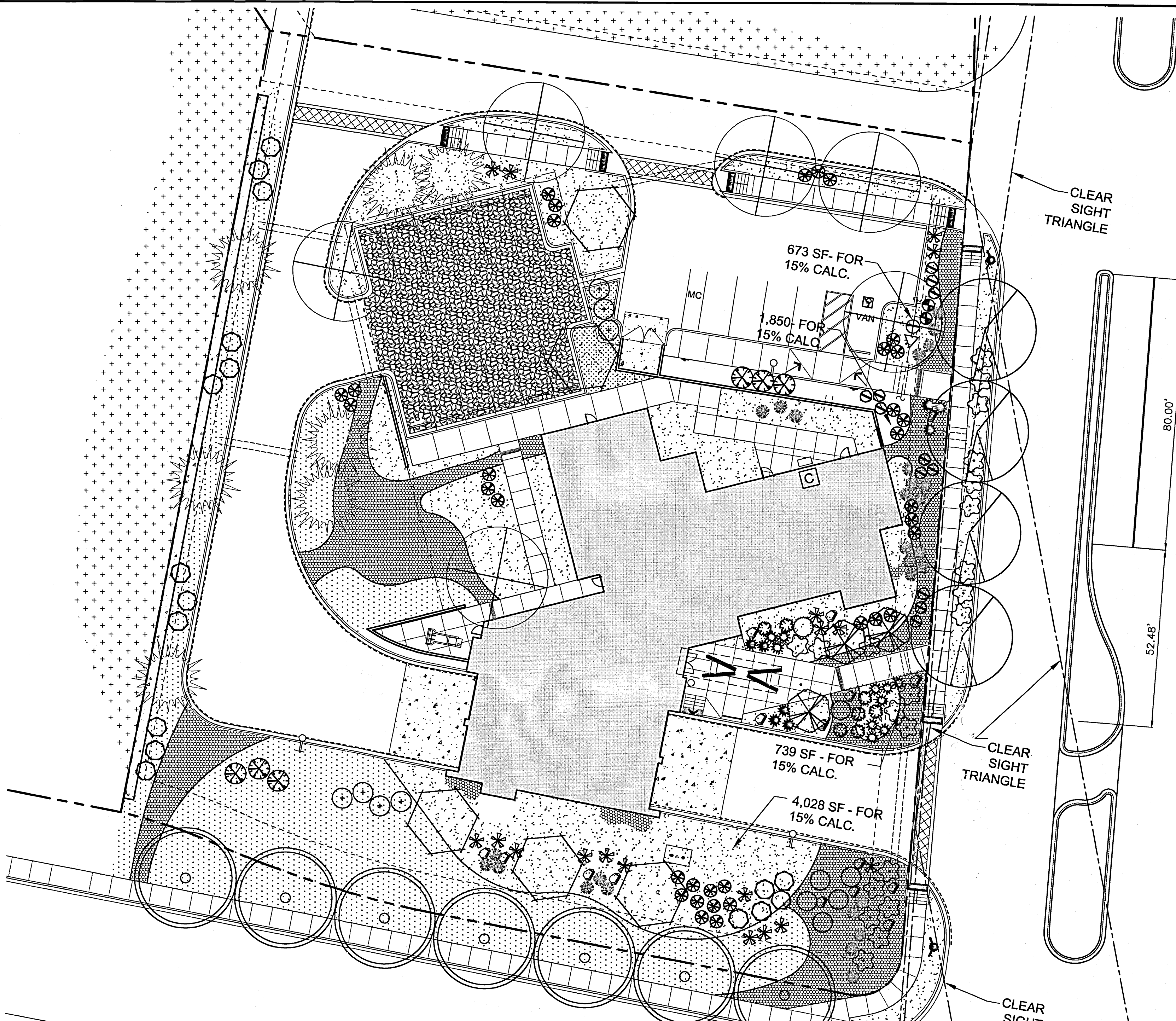
FINAL FOR CONSTRUCTION

FIRE STATION 2

PROJECT #8006.00
 DECEMBER 16TH, 2011

97828001

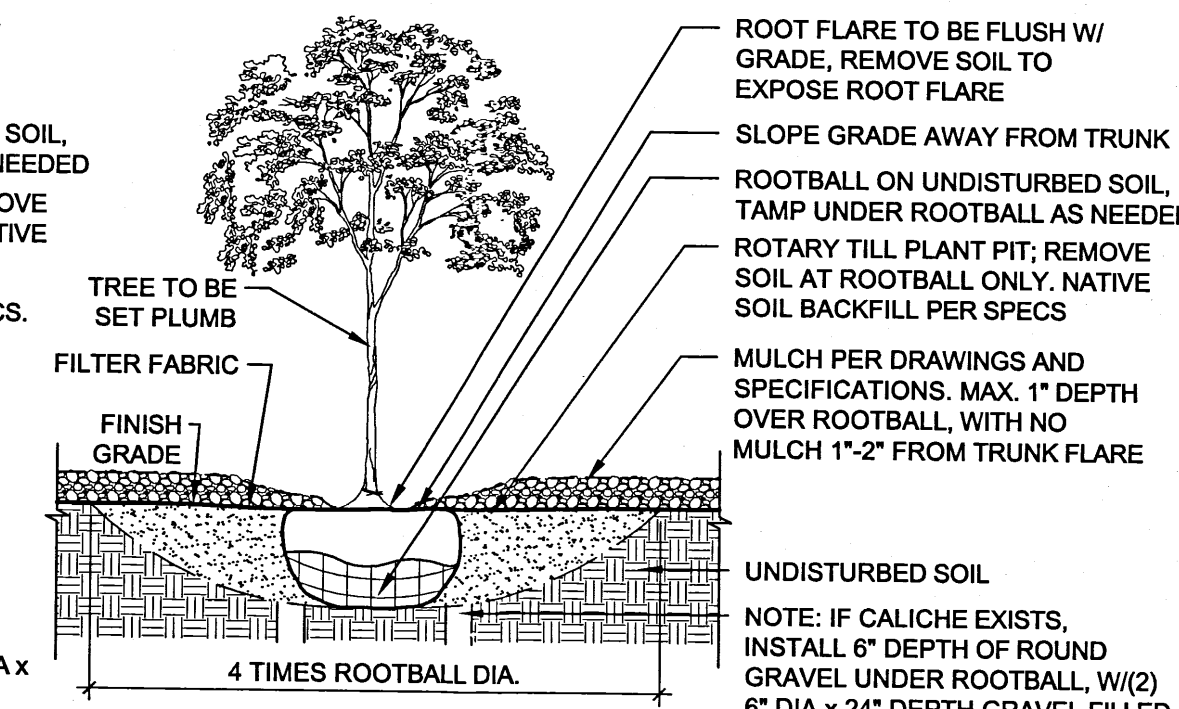
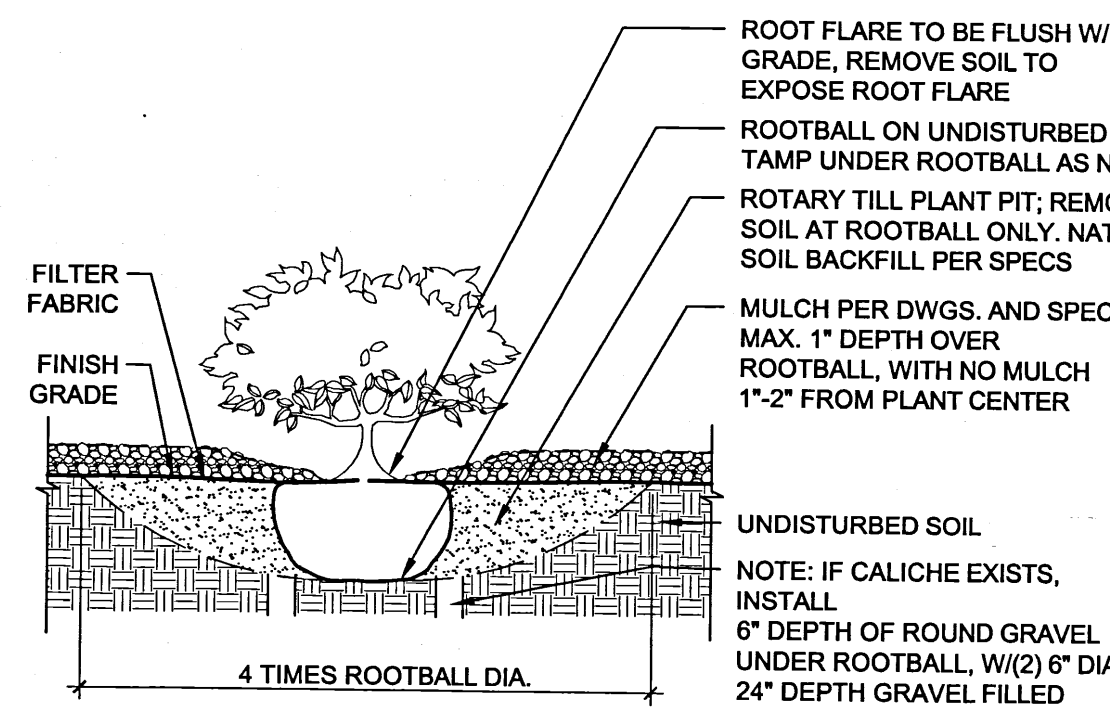
RECORD DRAWINGS



LANDSCAPE PLAN
1" = 20'
0 20' 40'

NOTES:
1. PRIOR TO BACKFILLING, ALL MATERIAL SUCH AS CONTAINERS, WIRE, BURLAP, AND ROPE SHALL BE REMOVED AS COMPLETELY AS POSSIBLE, WHILE STILL PROTECTING THE INTEGRITY OF THE ROOTBALL.
2. BOTTOM OF SHRUB PITS TO BE COMPACTED TO PREVENT SETTLING

NOTES:
1. PRIOR TO BACKFILLING, ALL MATERIAL SUCH AS CONTAINERS, WIRE, BURLAP, AND ROPE SHALL BE REMOVED AS COMPLETELY AS POSSIBLE, WHILE STILL PROTECTING THE INTEGRITY OF THE ROOTBALL.
2. BOTTOM OF TREE PITS TO BE COMPACTED TO PREVENT SETTLING



PLANTING NOTES

- A. LANDSCAPE AREAS SHALL BE COVERED WITH MULCH AND FILTER FABRIC. SEE LEGEND FOR MATERIAL.
- B. TREE AND SHRUB PITS TO BE 4 TIMES THE ROOTBALL DIAMETER.
- C. WATER USE DESCRIPTION: PLANT MATERIALS HAVE BEEN CHOSEN FOR THEIR XERIC QUALITIES IN ADDITION TO THEIR AESTHETIC AND HABITAT VALUES.
- D. THERE IS NO HIGH WATER USE TURF USED ON THIS PROJECT.
- E. LINES SHOWN BETWEEN MULCH PATTERNS REPRESENT THE TRANSITION LINE - NO STEEL EDGING TO BE USED.
- F. THE LANDSCAPE DESIGN SHALL COMPLY WITH THE INTENT OF THE CITY OF ALBUQUERQUE WATER CONSERVATION, LANDSCAPING AND WATER WASTE ORDINANCE.
- G. SOIL PREPARATION AND AERATION WITHIN ROW IS REQUIRED TO DE-COMPACT LANDSCAPE ZONE PRIOR TO PLANTING.
- H. PASSIVE WATER HARVESTING, SUCH AS HARVESTING OF STORM WATER SURFACE RUNOFF AND ROOF RUNOFF, SHALL BE UTILIZED WHERE FEASIBLE AND CAPTURED IN SWALES.
- I. SOIL AMENDMENTS WILL BE USED FOR PLANT MATERIAL.
- J. MAINTENANCE WILL BE THE RESPONSIBILITY OF THE OWNER.

IRRIGATION NOTES

- A. THE LANDSCAPE DESIGN REQUIRES A PERMANENT, FULLY AUTOMATIC IRRIGATION SYSTEM TO SUPPORT THE PLANT MATERIAL.
- B. THE IRRIGATION SYSTEM WILL BE CONNECTED TO CITY WATER. THE POINT OF CONNECTION WILL CONSIST OF A WATER METER, BACKFLOW PREVENTER AND MASTERVALVE, SEE COA STD DETAIL #2701.
- C. CONTROLLER: THE IRRIGATION SYSTEM SHALL BE RUN WITH FULLY AUTOMATED IRRIGATION CONTROLLER. RUN TIME WILL BE ADJUSTED ACCORDING TO PLANT MATURITY, SEASON, LOCATION, AND PLANT PERFORMANCE.
- D. DRIP EMITTERS SHALL BE USED FOR ALL PLANT MATERIAL.
- E. MAINTENANCE WILL BE THE RESPONSIBILITY OF THE OWNER.

PLANTING LEGEND

TREES - SEE COA STD. DETAIL 2710, 2714 & 2716

SYMBOL	EST. QTY.	COMMON NAME	SCIENTIFIC NAME	INSTALL SIZE	MATURE HEIGHT	MATURE WATER USE
	7	CHINESE PISTACHE	<i>Pistacia chinensis</i>	2-1/2" CAL.	35.00	MEDIUM
	4	FRONTIER ELM	<i>Ulmus hybrid 'Frontier'</i>	2-1/2" CAL.	40.00	MEDIUM
	6	JAPANESE PAGODA TREE	<i>Sophora japonica Regent</i>	1-1/2" CAL.	35.00	MEDIUM
	5	DESERT WILLOW	<i>Chlospis linearis</i>	24" BOX	20.00	LOW
	3	SMOKETREE	<i>Cotinus coccinifera</i>	24" BOX	15.00	MEDIUM
	7	AUSTRIAN PINE	<i>Pinus nigra</i>	8' HT.	40.00	MEDIUM

SHRUB - SEE COA STD. DETAIL 2711 & 2717

SYMBOL	EST. QTY.	COMMON NAME	SCIENTIFIC NAME	INSTALL SIZE	MATURE HEIGHT	MATURE WATER USE
	17	CHAMISA	<i>Chrysothamnus nauseosus</i>	5-GAL	6.00	LOW
	7	CURL-LEAF MAHOGANY	<i>Cercocarpus ledifolius</i>	5-GAL	6.00	LOW
	6	SPANISH BROOM	<i>Spartium junceum</i>	5-GAL	4.00	MEDIUM
	34	THREE LEAF SUMAC	<i>Rhus trilobata</i>	1-GAL	4.00	LOW
	10	DAMIANITA	<i>Chrysactinia mexicana</i>	1-GAL	2.00	LOW
	21	CREeping THREE-LEAF SUMAC	<i>Rhus trilobata 'Autumn Amber'</i>	1-GAL	2.00	MEDIUM
	12	TURPENTINE BUSH	<i>Eriocaulon leucostachyoides</i>	1-GAL	3.00	LOW

SUCCULENT - SEE COA STD. DETAIL 2711 & 2717

SYMBOL	EST. QTY.	COMMON NAME	SCIENTIFIC NAME	INSTALL SIZE	MATURE HEIGHT	MATURE WATER USE
	8	PARRY'S AGAVE	<i>Agave parryi var. Parry</i>	5-GAL	1.50	LOW
	18	SOTOL	<i>Dasylirion wheeleri</i>	5-GAL	4.00	LOW
	7	TEXAS RED YUCCA	<i>Hesperaloe parviflora</i>	5-GAL	4.00	LOW
	7	ENGELMAN'S PRICKLY PEAR	<i>Opuntia engelmannii</i>	5-GAL	4.00	LOW
	28	BEARGRASS	<i>Nolina macrocarpa</i>	5-GAL	4.00	LOW

MULCH

SYMBOL	BASE BD EST. QTY.	ALTERNATE EST. QTY.	TYPE
	11,487 SF	8,789 SF	3" DEPTH 1" GRAVEL OVER FILTER FABRIC, COLOR: AMARETTO BROWN
	8,853 SF	7,521 SF	3" DEPTH 1"-4" GRAVEL OVER FILTER FABRIC, COLOR: BLUE SAIS
	6,136 SF	5,811 SF	6" DEPTH 5-12" ANGULAR COBBLE OVER FILTER FABRIC, COLOR: SUNSET ROSE
	8,601 SF		1" DEPTH 1"-4" GRAVEL, NO FILTER FABRIC, COLOR: BLUE SAIS WITH NATIVE SEED (NOT IRRIGATED)

TOTAL RATE: 11.0 LBS/SQACRE

LANDSCAPE BOULDER, SIZE: 31" X 2'-3" X 2'-3", COLOR: GRANITE (GRAY/RED)

LANDSCAPE CALCULATIONS

SITE AREA: 56,461 SF = 1.30 ACRES
 TOTAL BUILDING FOOTPRINT: 8,945 SF
 NET SITE AREA: 47,516 SF
 REQUIRED LANDSCAPE AREA: 7,127 SF (15% OF NET SITE AREA)
 PROVIDED LANDSCAPE AREA: 7,290 SF (WITH 75% VEGETATIVE GROUND COVER)
 (16% OF NET SITE AREA / 14% OF TOTAL SITE AREA)
 TOTAL PERMEABLE AREA IN BASE BID: 20,247 SF
 TOTAL PERMEABLE AREA IN ALTERNATE: 26,459 SF

STREET TREES:
 GIBSON BLVD: 224 LF / 30' SPACING PER TREE = 7 TREES REQUIRED
 PROVIDED STREET TREES AT GIBSON BLVD: 7
 WEST ROAD: 114 LF / 30' SPACING PER TREE = 4 TREES REQUIRED
 PROVIDED STREET TREES AT WEST ROAD: 4

AS BUILT INFORMATION

CONTRACTOR	DATE

BENCH MARKS

NO.	DATE

SURVEY INFORMATION

FIELD NOTES	BY	DATE

Dekker/Perich/Sabatini
 architecture • interiors • landscape • planning • engineering
 7601 Jefferson NE, Suite 100, Albuquerque, NM 87109
 505 761-9700, fax 761-4222

CITY OF ALBUQUERQUE
 CAPITAL IMPLEMENTATION PROGRAM

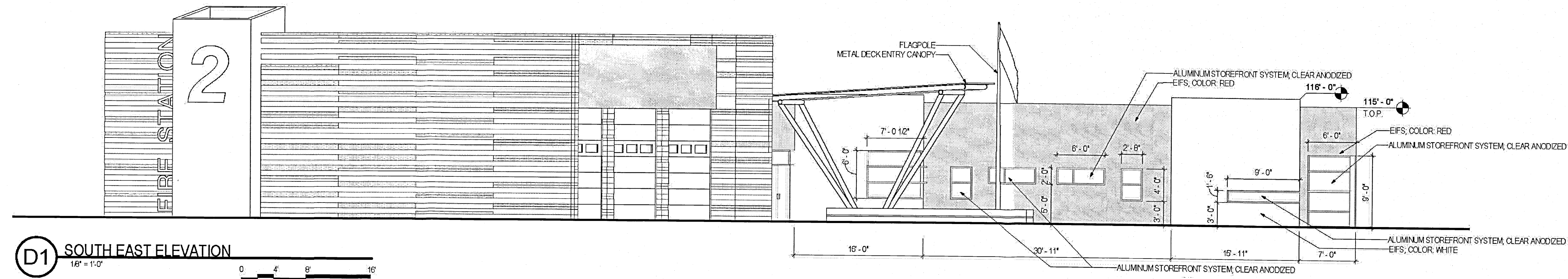
PROJECT TITLE: FIRE STATION 2
 ALBUQUERQUE, NEW MEXICO

DRAWING TITLE: LANDSCAPE PLAN

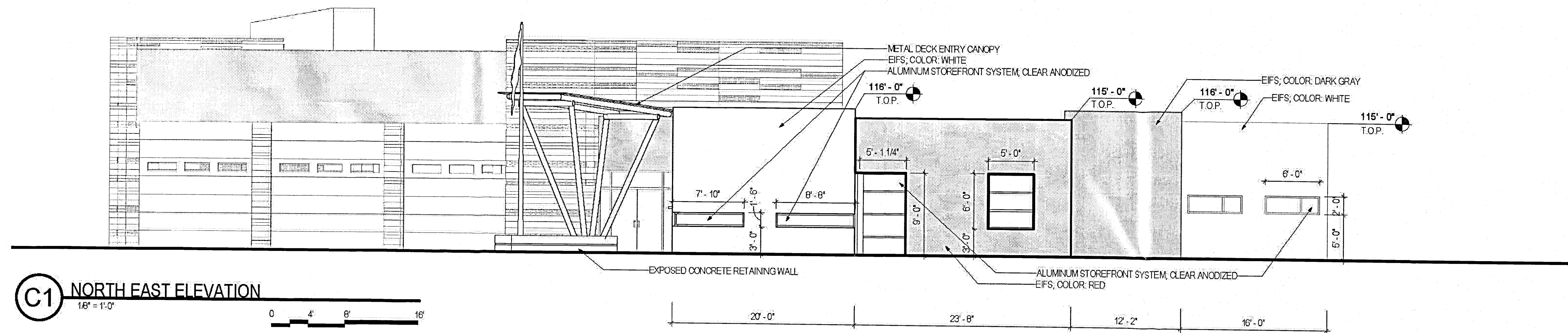
Design Review Committee	City Engineer Approval	Mo./Day/Yr.	Mo./Day/Yr.

City Project No. 8006.00 Zone Map No. L-15-Z DWG. LP-101 Sheet 5 of 9

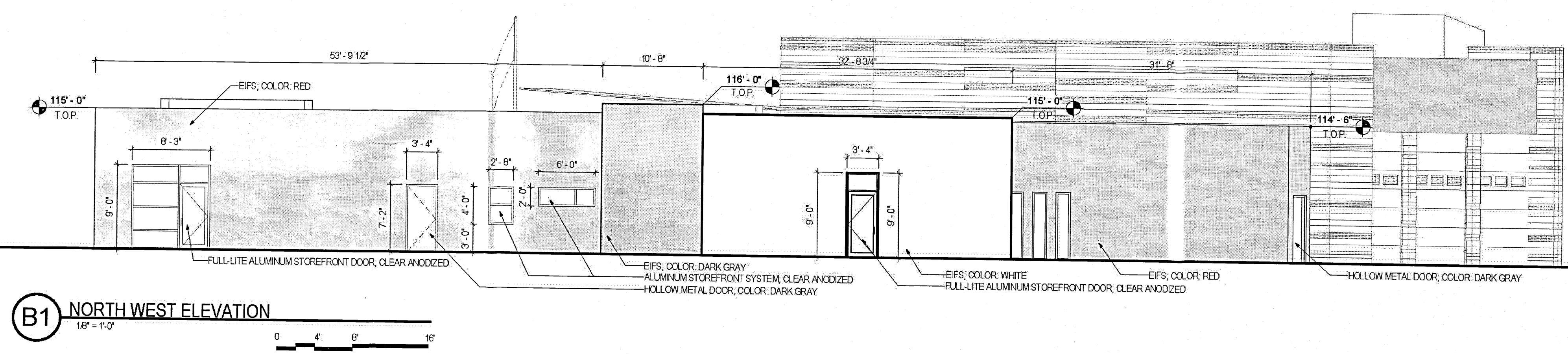
11-0016-LP-1012/2/11 1:14:4041791



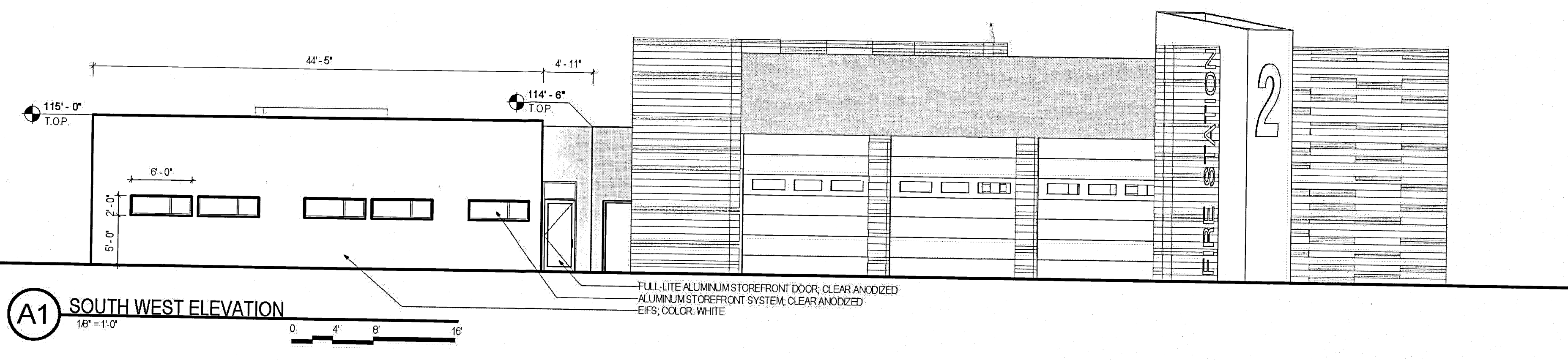
D1 SOUTH EAST ELEVATION
1/8" = 1'-0"



C1 NORTH EAST ELEVATION
1/8" = 1'-0"



B1 NORTH WEST ELEVATION
1/8" = 1'-0"



A1 SOUTH WEST ELEVATION
1/8" = 1'-0"

AS BUILT INFORMATION	
CONTRACTOR	DATE
INSPECTOR'S	DATE
STAMPED BY	DATE
FIELD	DATE
VERIFICATION BY	DATE
CORRECTED BY	DATE
MICRO-FILM INFORMATION	
RECORDED BY	DATE
NO.	

BENCH MARKS	
NO.	DATE

SURVEY INFORMATION	
FIELD NOTES	BY
NO.	DATE

SEAL	
REVISIONS	BY
NO.	DATE
REMARKS	DATE
DESIGN	DATE
DRAWN BY	DATE
CHECKED BY	DATE

Dekker/Perich/Sabatini
 architecture • interiors • landscape • planning • engineering
 7601 Jefferson NE, Suite 100 Albuquerque, NM 87109
 505 761-6700 fax 781-4222

CITY OF ALBUQUERQUE
CAPITAL IMPLEMENTATION PROGRAM

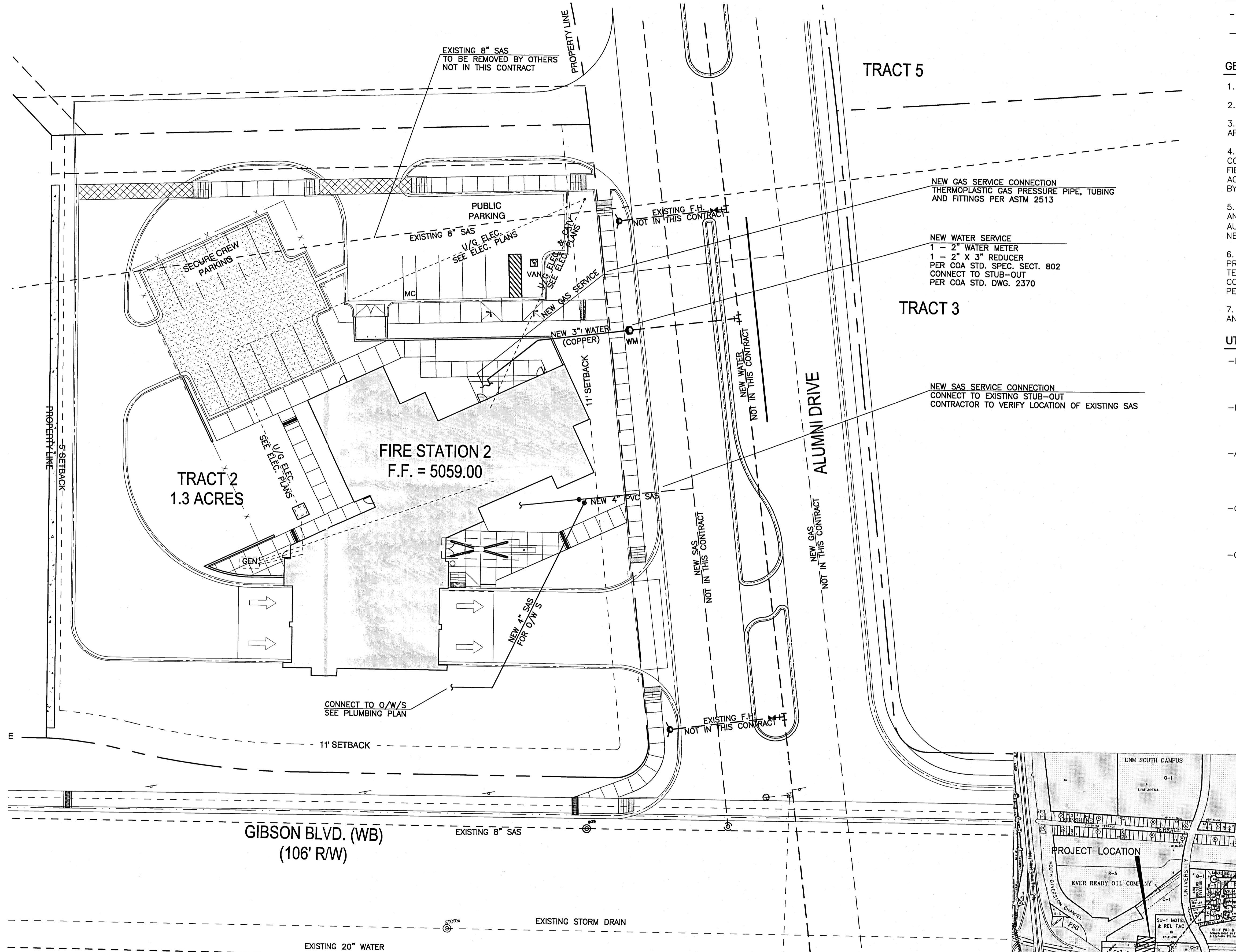
PROJECT TITLE:
FIRE STATION
ALBUQUERQUE, NEW MEXICO

DRAWING TITLE:
EXTERIOR ELEVATIONS

Design Review Committee	City Engineer Approval	Last Design Update	Mo./Day/Yr.	Mo./Day/Yr.

City Project No. **8006.91** Zone Map No. **L-15-Z** DWG. **AE-201** Sheet **7** Of **9**

C:\Documents and Settings\brendora\My Documents\1-001 6-F52-A-EPIC-Central_branding.rvt
 9/20/2011 9:15:45 AM



LEGEND

----- EXISTING UTILITY

----- PROPERTY LINE

GENERAL NOTES

1. ALL EXISTING UTILITIES MAY NOT BE SHOWN.
2. EXISTING SERVICE CONNECTIONS ARE NOT SHOWN
3. ANY EXISTING UTILITIES THAT ARE SHOWN ARE SHOWN IN APPROXIMATE LOCATION ONLY.
4. IT SHALL BE THE RESPONSIBILITY OF THE CONTRACTOR TO CONTACT ALL UTILITY OWNERS AND CONDUCT ALL NECESSARY FIELD INVESTIGATIONS PRIOR TO ANY EXCAVATIONS TO DETERMINE ACTUAL LOCATIONS OF EXISTING UTILITIES THAT MAY BE EFFECTED BY NEW CONSTRUCTION.
5. CONTRACTOR SHALL USE THE CITY OF ALBUQUERQUE UTILITY AND THE ALBUQUERQUE, BERNALILLO COUNTY WATER UTILITY AUTHORITY (ABCWUA) WORK ORDER PROCESS WHEN INSTALLING NEW UTILITIES WHEN APPLICABLE.
6. CONTRACTOR SHALL ARRANGE WITH GAS UTILITY COMPANY TO PROVIDE GAS SERVICE TO INDICATED LOCATION WITH SHUTOFF AT TERMINUS. CONSULT GAS COMPANY AS TO EXTENT OF ITS WORK, COSTS AND PERMITS INVOLVED. PAY COSTS AND FEES TO OBTAIN PERMITS.
7. GAS SERVICE FIELD QUALITY CONTROL INSPECTIONS, TESTING AND PURGE GAS SYSTEMS PER UTILITY REQUIREMENTS, NFPA 54.

UTILITY CONTACT LIST

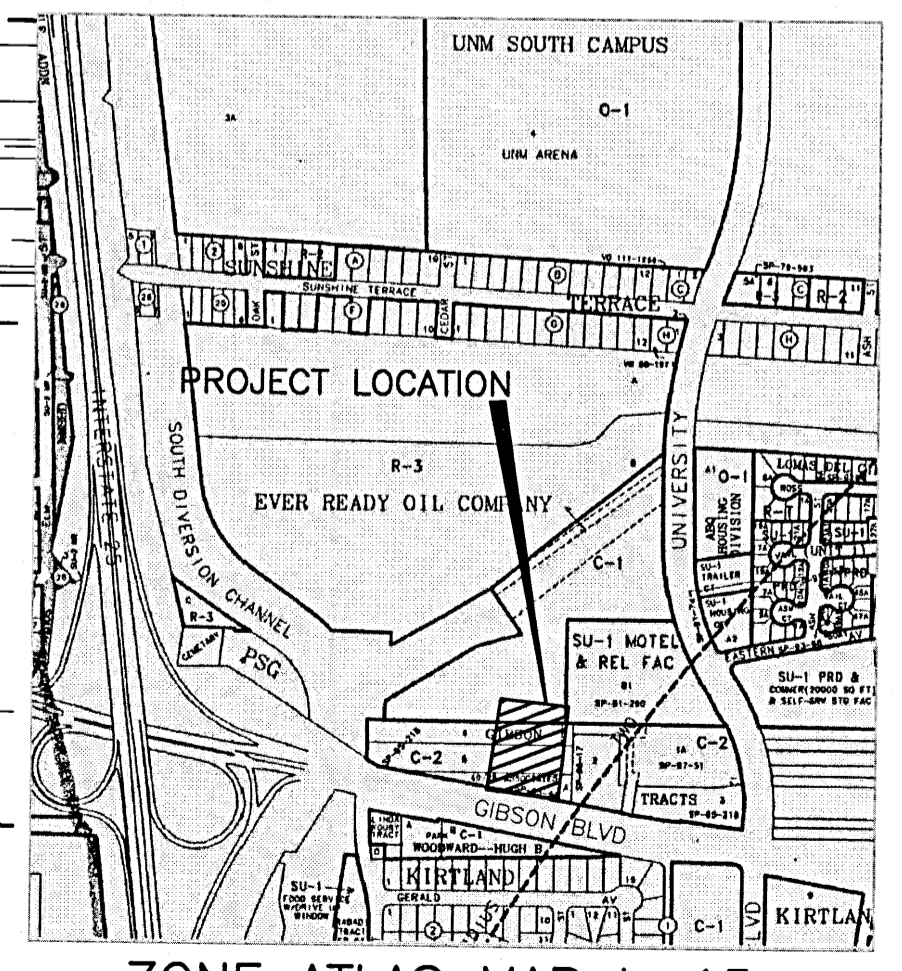
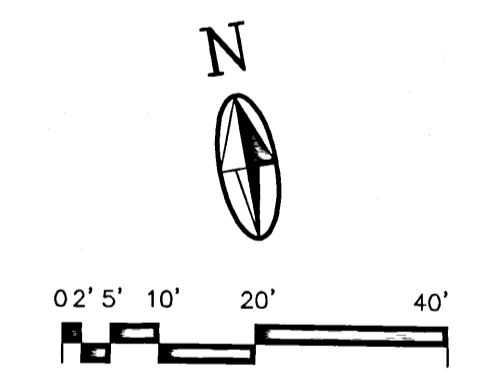
-PNM - P.O. BOX 349
ALBUQUERQUE, NM 87103
888-342-5766
www.pnm.com

-NM GAS CO. - P.O. BOX 97500
ALBUQUERQUE, NM 87199
888-664-2726
www.nmgco.com

-ABCWUA - ONE CIVIC PLAZA NW
ROOM 5012
ALBUQUERQUE, NM 87102
505-768-2500
www.abcwua.org

-COA STORM- ONE CIVIC PLAZA
3RD FLOOR, ROOM 301
ALBUQUERQUE, NM 87102
505-768-2778

-CENTURY LINK- 400 TIJERAS AVE NW
ALBUQUERQUE, NM 87102
ROSA KNIFFIN
505-245-6374



MOLZENCORBIN

CITY OF ALBUQUERQUE PUBLIC WORKS DEPARTMENT ENGINEERING DEVELOPMENT GROUP	
TITLE: FIRE STATION 2 ALBUQUERQUE, NEW MEXICO	
UTILITY PLAN	
Design Review Committee	City Engineer Approval
Mo./Day/Yr.	Mo./Day/Yr.
City Project No. 8006.91	Zone Map No. C-102
Sheet 9	Of 9

AS BUILT INFORMATION	
CONTRACTOR	DATE
STARTED BY	DATE
ACCEPTANCE BY	DATE
FIELD DRAWINGS BY	DATE
RECORDED BY	DATE
MICRO-FILM INFORMATION	
RECORDED BY	DATE
BENCH MARKS	
NO.	DATE
SURVEY INFORMATION	
NO.	BY
FIELD NOTES	
ENGINEER'S SEAL	
95% C.D. SUBMITTAL	M-C
REMARKS	BY
DESIGN	REVISIONS
DESIGNED BY CWG	DATE 11.1.11
DRAWN BY CWG	DATE 11.1.11
CHECKED BY JMP	DATE 11.1.11