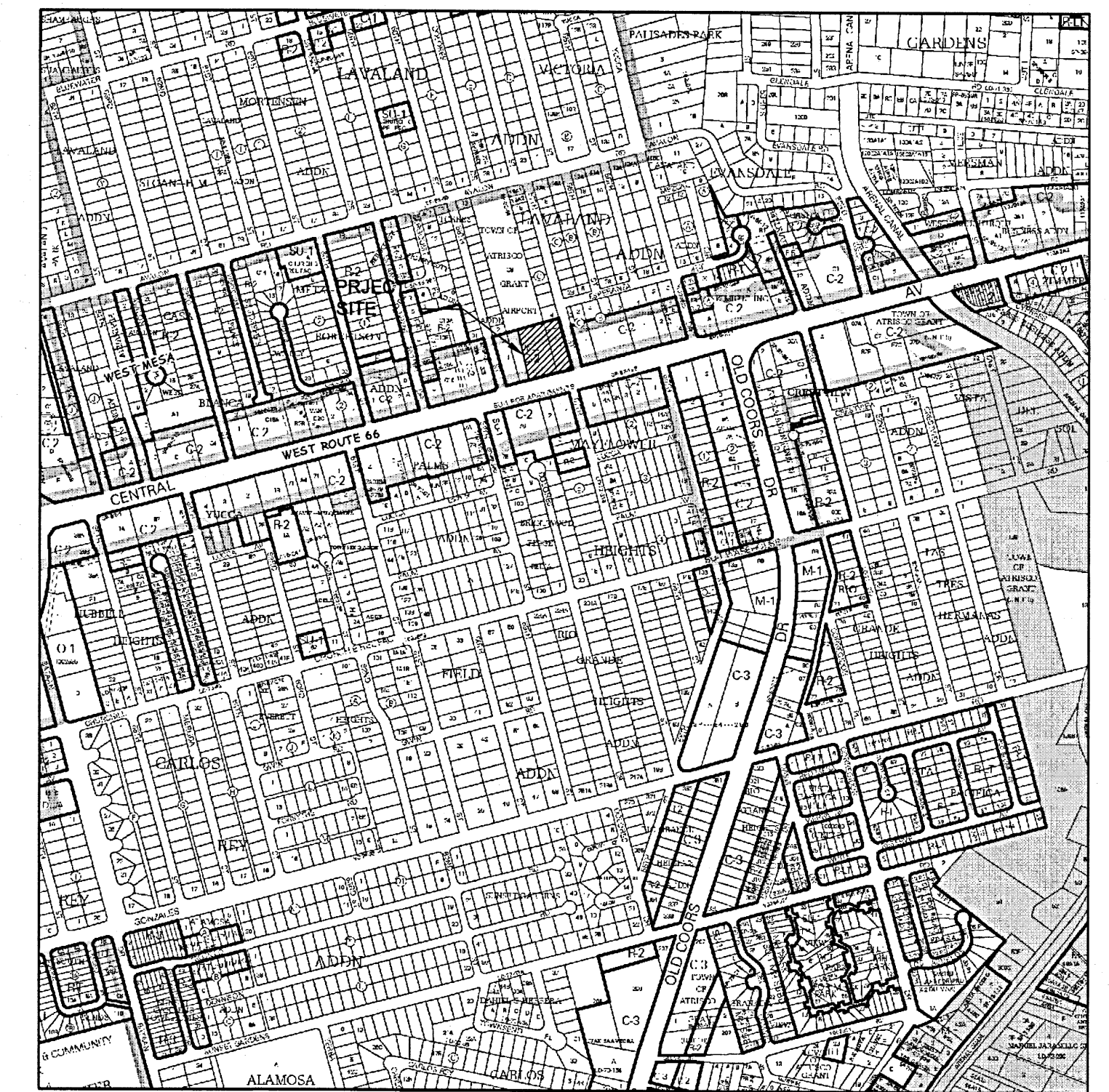


Index of Drawings

1 of 13	GI-100	COVER SHEET
2 of 13	AS-100	SITE DEVELOPMENT PLAN
3 of 13	AS-101	SITE PLAN
4 of 13	AS-501	SITE DETAILS
5 of 13	LS-101	LANDSCAPE PLAN
6 of 13	C-101 A	GRADING AND DRAINAGE
7 of 13	C-101	GRADING AND DRAINAGE
8 of 13	AE-201	BUILDING ELEVATIONS
9 of 13	AE-202	BUILDING ELEVATIONS
10 of 13	C-102	UTILITY PLAN
11 of 13	C-103	NOT USED
12 of 13	C-106	PLAT
13 of 13	C-107	PLAT

VICINITY MAP



For more current information and more details visit: <http://www.cabq.gov/gis>

Zone Atlas Page: K-11-Z


Selected Symbols

- SECTOR PLANS
- Design Overlay Zones
- City Historic Zones
- 1/4 Mile Buffer Zones
- Neighborhood
- 2 Mile Airport Zone
- Airport Noise Contours
- Wall Overlay Zones

Note: City Shading Represents Area Outside of the City Limits.

Map amended through: 1/24/2011

SCALE: 1" = 750'

 **City of Albuquerque**
Capital Implementation Program

Owner
COA Fire Department

FIRE STATION 7
DRB SUBMITTAL 12.16.2011

1008787

 **Dekker/Perich/Sabatini**
 architecture • interiors • landscape • planning • engineering
 7601 Jefferson NE, Suite 100 Albuquerque, NM 87109
 505 761-9700 fax 761-4222

ARCHITECT

DEKKER/PERICH/SABATINI
 7601 JEFFERSON ST. NE SUITE 100
 ALBUQUERQUE, NM 87109
 (505) 761-9700
 FAX: (505) 761-4222

LANDSCAPE ARCHITECT

DEKKER/PERICH/SABATINI
 7601 JEFFERSON ST. NE SUITE 100
 ALBUQUERQUE, NM 87109
 (505) 761-9700
 FAX: (505) 761-4222

CIVIL ENGINEER

MOLZEN CORBIN
 2701 MILES ROAD SE
 ALBUQUERQUE, NM 87106
 (505) 242-5700
 FAX: (505) 242-0673

ELECTRICAL ENGINEER

BRIDGERS & PAXTON
 4600-C MONTGOMERY BLVD. NE
 ALBUQUERQUE, NM 87109
 (505) 883-4111
 FAX: (505) 888-1436

REV.	SHEETS	CITY ENGINEER	DATE	USER DEPARTMENT	DATE	USER DEPARTMENT	DATE
ARCHITECTS STAMP & SIGNATURE		APPROVED		ENGINEER	DATE		
		DRC Chairman					
		Transportation					
		Water/Wastewater					
		Hydrology					
		CIP					
		Constr. Mngmt.					
		Constr. Coord.				CITY ENGINEER	DATE
PROJECT NUMBER 8006.00				DWG. GI-100	SHEET 1 OF 13		

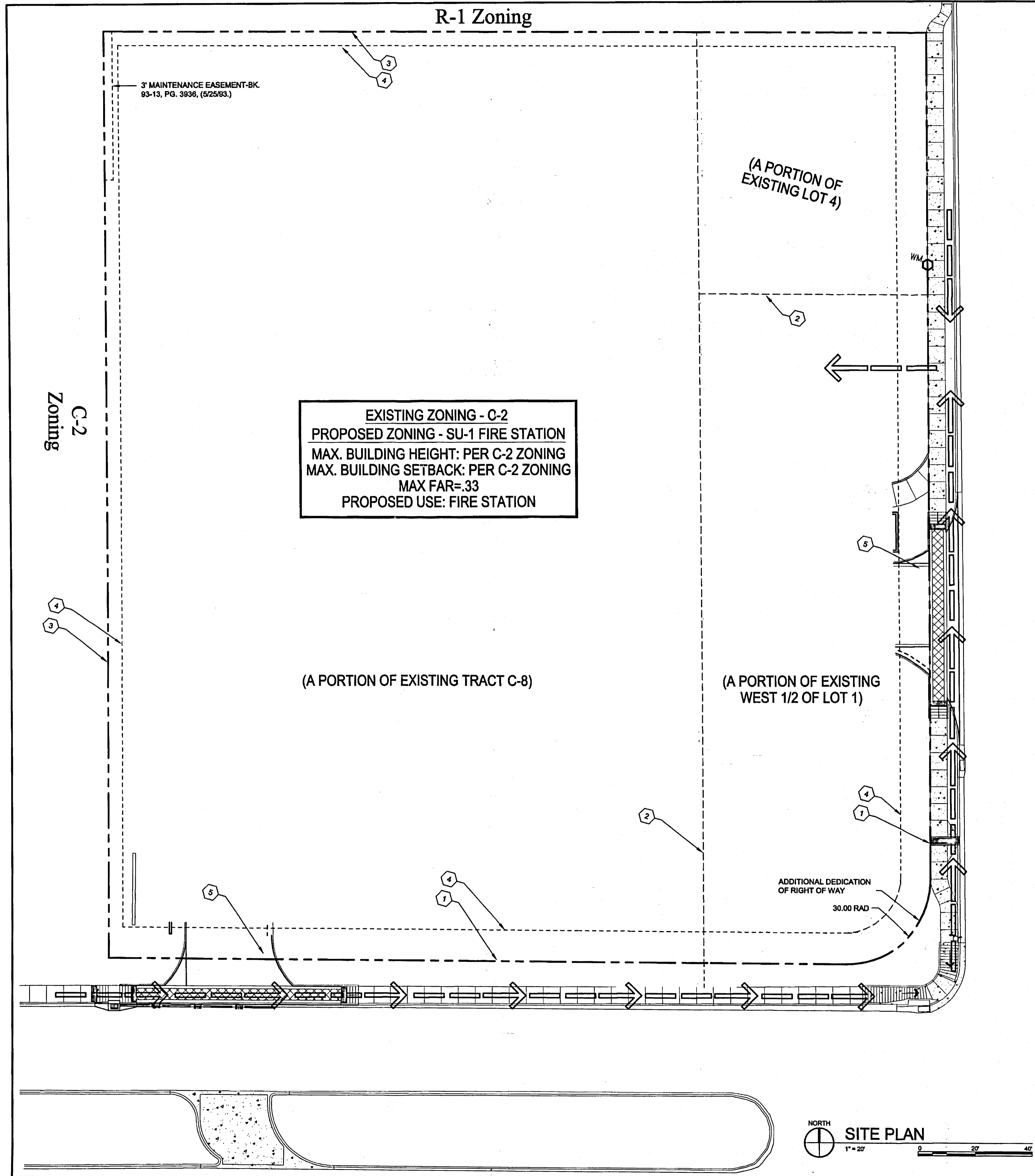
DRB SUBMITTAL - NOT FOR CONSTRUCTION

FINAL FOR CONSTRUCTION

FIRE STATION 7

PROJECT #8006.00
December 16th, 2011

RECORD DRAWINGS



SITE INFORMATION

LEGAL DESCRIPTION
 A PORTION OF THE WEST 1/2 OF LOT 1 AND A PORTION OF LOT 4, BLOCK C, LAVALAND ADDITION; AND A PORTION OF TRACT C-8, TOWN OF ATRISCO GRANT AIRPORT UNIT

TOTAL SITE AREA: 90,655 SF = 2.08 ACRES
 GROSS F.A.R. (GBA/SITE AREA) = 0.12

LEGEND

- PEDESTRIAN INGRESS/EGRESS
- VEHICULAR INGRESS/EGRESS
- PROPERTY LINE
- PROPERTY LINE TO BE REMOVED
- SETBACK

PROJECT NUMBER: 1008787

APPLICATION NUMBER:

Is an Infrastructure List Required? () Yes () No. If yes, then a set of approved DRB plans with a work order is required for any construction within Public Right-of-Way or for construction of public improvements.

DRB SITE DEVELOPMENT PLAN APPROVAL:

[Signature] 12-21-11
 TRAFFIC ENGINEER, TRANSPORTATION DIVISION DATE

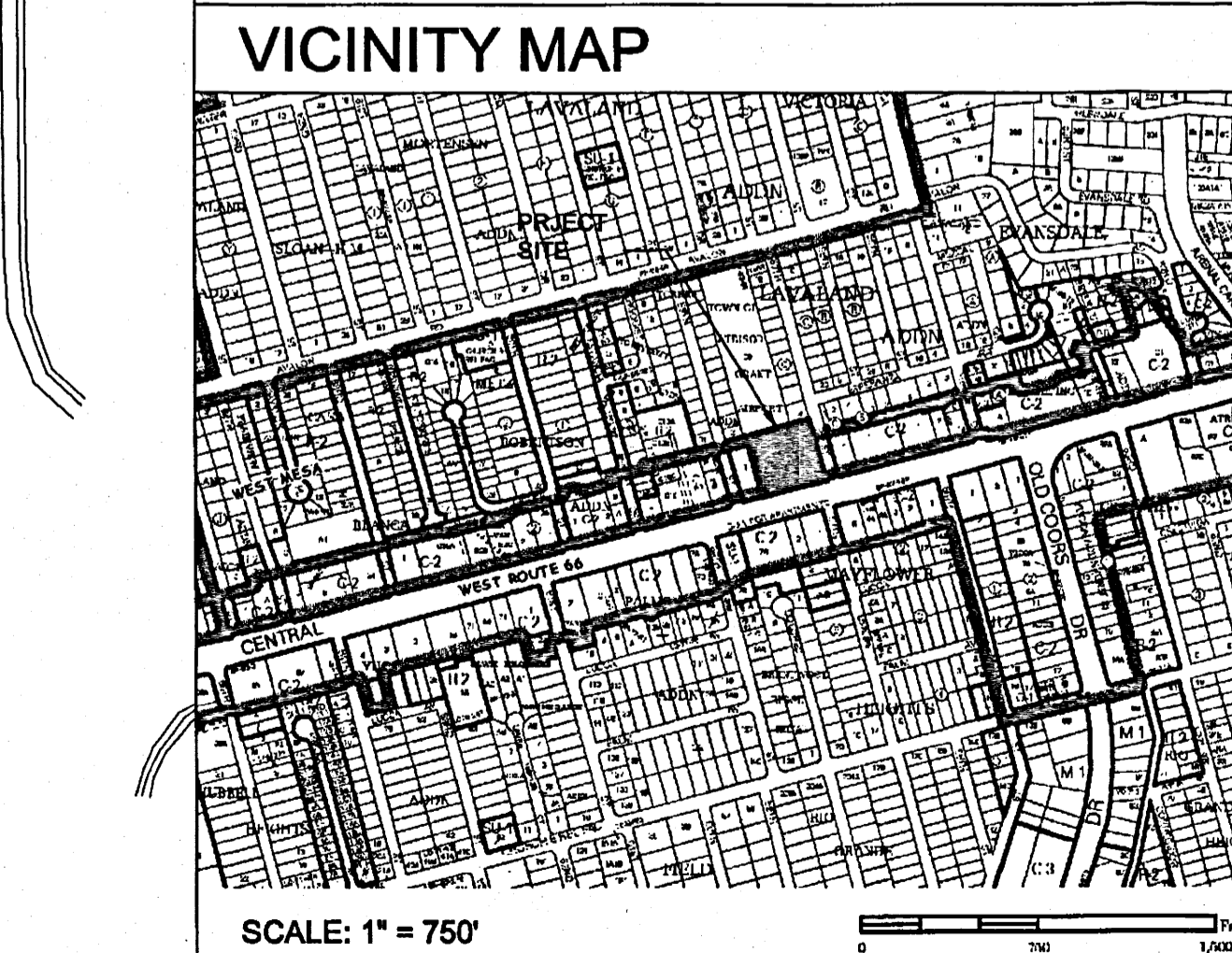
[Signature] 12-21-11
 UTILITIES DIVISION DATE

[Signature] 12-21-11
 PARKS AND RECREATION DEPARTMENT DATE

[Signature] 12-21-11
 CITY ENGINEER DATE

[Signature] DATE
 SOLID WASTE MANAGEMENT DATE

[Signature] 12-21-11
 DRB CHAIRPERSON, PLANNING DEPARTMENT DATE



GENERAL NOTES

- PEDESTRIAN ACCESS RAMPS WITHIN THE PUBLIC ROW WILL BE CONSTRUCTED PER COA STD DWG. #2428
- THE PROJECT WILL BE CONSTRUCTED ALL AT ONCE. IT WILL NOT BE PHASED.
- ALTERNATIVE TRANSPORTATION FACILITIES: THE PROJECT INCORPORATES SIDEWALKS AND BIKE RACKS.
- REFER TO SITE DEVELOPMENT PLAN FOR BUILDING PERMIT PACKAGE FOR CONCEPTUAL UTILITIES PLAN
- DESIGN STANDARDS NOT PROVIDED, REFER TO SITE DEVELOPMENT PLAN FOR BUILDING PERMIT FOR SPECIFIC SITE AND BUILDING DESIGN INFORMATION

SHEET KEYED NOTES

- EXISTING PROPERTY LINE TO REMAIN
- EXISTING PROPERTY LINE TO BE REMOVED
- NEW PROPERTY LINE
- REQUIRED SETBACK
- PROPOSED DRIVEWAY

AS BUILT INFORMATION		BENCH MARKS		SURVEY INFORMATION		SEAL	
CONTRACTOR	DATE	NO.	DATE	NO.	DATE	NO.	DATE

Dekker/Perich/Sabatini
 architecture • interiors • landscape • planning • engineering
 7811 Jefferson NE, Suite 100 Albuquerque, NM 87110
 505 791-8100 fax 781-4222

CITY OF ALBUQUERQUE
 CAPITAL IMPLEMENTATION PROGRAM

PROJECT TITLE: FIRE STATION 7
 ALBUQUERQUE, NEW MEXICO

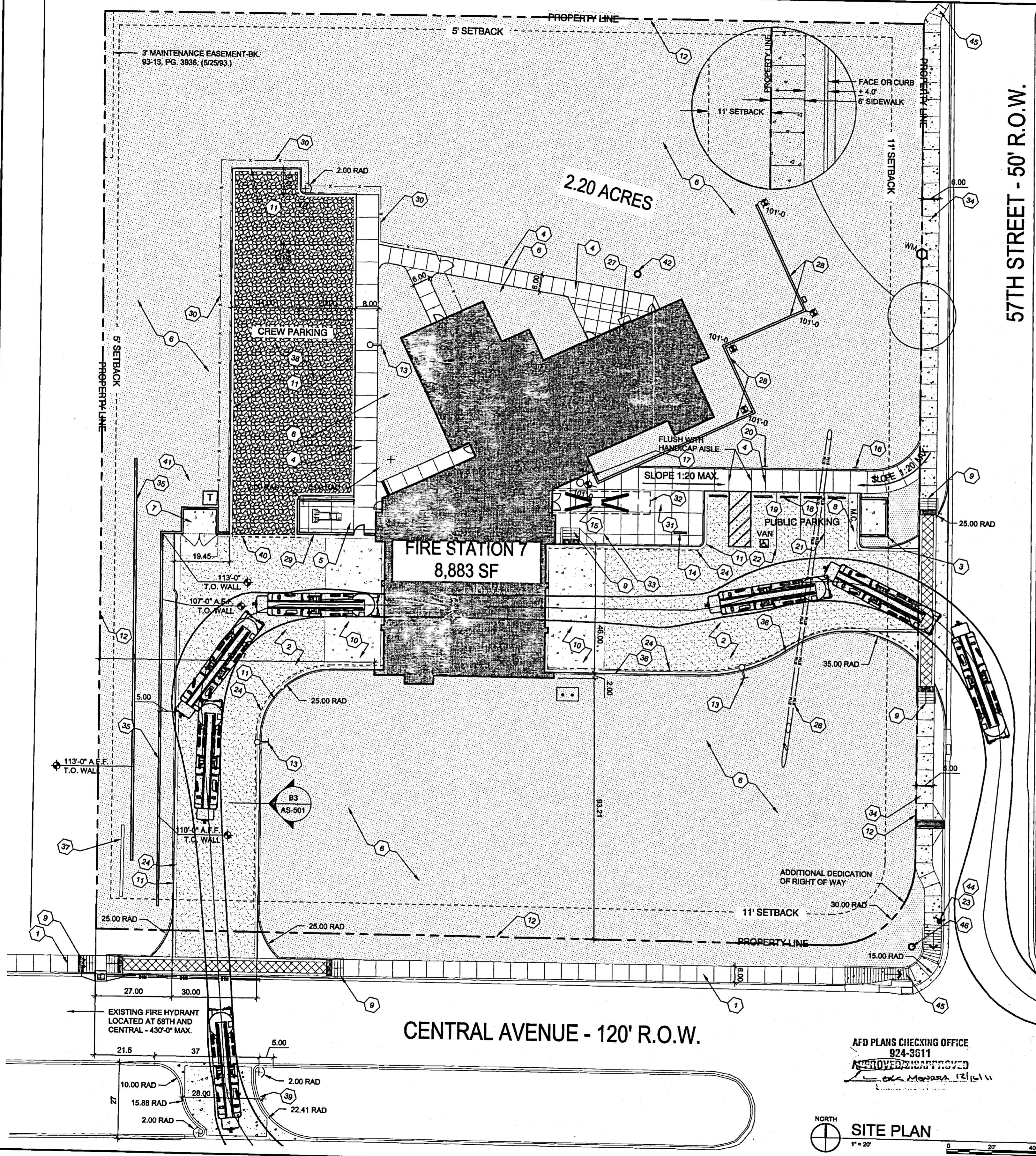
DRAWING TITLE: SITE DEVELOPMENT PLAN FOR SUBDIVISION

Design Review Committee	City Engineer Approval	Mo./Day/Yr.	Mo./Day/Yr.

City Project No. 8006.00 Zone Map No. K-11-Z DWG. AS-100 Sheet 2 Of 13

11-0016-7-AS-100 12/15/11 1:214-4041791

11-0016-7-AS-01 (REV 2/21/11) 12-13-2011 40-441791



GENERAL NOTES

- A. PARKING AREA SHALL BE DESIGNED & BUILT TO CURRENT DPM STANDARDS AND COA ZONING CODE
- B. SEE CIVIL PLANS FOR ADDITIONAL GRADING, DRAINAGE AND UTILITY INFORMATION.
- C. SIGNS: SEE BUILDING ELEVATIONS FOR DESCRIPTION OF SIGNAGE ON BUILDING. DIMENSIONS ARE TO FACE OF CURB, OR WALL OR EDGE OF PAVEMENT UNLESS OTHERWISE NOTED.
- D. PEDESTRIAN ACCESS RAMPS WITHIN THE PUBLIC ROW WILL BE CONSTRUCTED PER COA STD DWG. #2415B
- E. ALL CURBS TO BE DESIGNED AND BUILT ACCORDING TO THE COA STANDARDS. CURBS WILL ALSO BE DESIGNED TO ALLOW WATER HARVESTING IN LANDSCAPE MEDIANS WHERE POSSIBLE TO REDUCE SURFACE RUN-OFF AND SUPPLEMENT IRRIGATION.
- F. ALL FIXTURES AND DESIGN SHALL COMPLY WITH THE NEW MEXICO NIGHT SKY PROTECTION ACT AND THE COA ZONING CODE, SECTION 14-16-3-9 AREA LIGHTING REGULATIONS
- G. LIGHTING WITHIN THE PUBLIC RIGHT-OF-WAY SHALL BE SUBJECT TO THE STANDARDS AND REVIEW OF PNM, UNLESS MAINTENANCE FOR RIGHT-OR-WAY LIGHTING IS THE FULL RESPONSIBILITY OF OTHER PARTIES
- H. LIGHTING DESIGN FOR PARKING AREAS SHALL BE LIGHTED TO PROVIDE FUNCTIONAL, ATTRACTIVE, AND UNIFIED LIGHTING THROUGHOUT THE LOT AND BE EXTINGUISHED ONE HOUR AFTER THE CLOSE OF BUSINESS, EXCEPT AS NEEDED TO PROVIDE FOR MINIMUM SECURITY LEVELS.

LEGEND

- LIGHT POLE
- FIRE HYDRANT
- PROPERTY LINE
- SETBACK
- ▨ LANDSCAPE AREA - 54,291 S.F.
- ▩ CONCRETE PAVING AREA - 16,330 S.F.
- ▧ ASPHALT PAVING AREA - 5,226 S.F.
- ▤ CONCRETE CIRCULATION WALKWAYS - 4,547 S.F.

PROJECT NUMBER: **1008787**

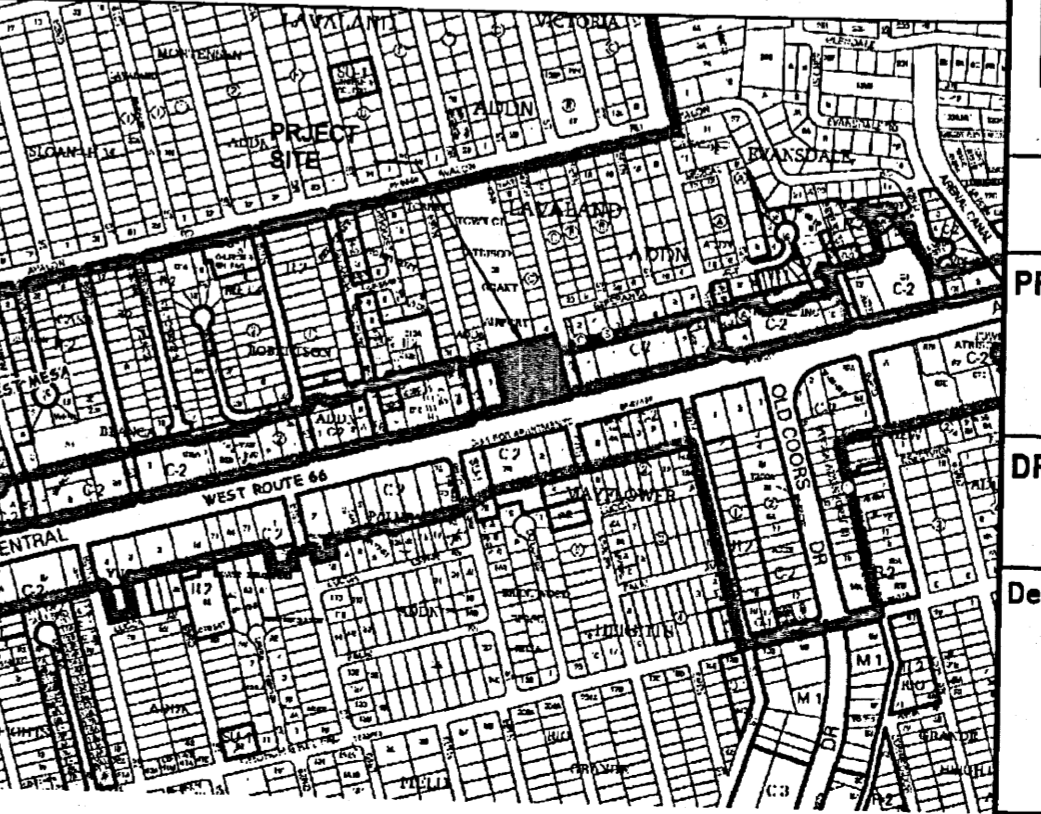
APPLICATION NUMBER: **EPC Site Development Plan-Building Permit**

Is an Infrastructure List Required? (x) Yes () No If yes, then a set of approved DRC plans with a work order is required for any construction within Public Right-of-Way or for construction of public improvements.

DRB SITE DEVELOPMENT PLAN APPROVAL:

<i>KWALS</i>	12-21-11
TRAFFIC ENGINEER, TRANSPORTATION DIVISION	DATE
<i>Alfonso Pitzer</i>	12-21-11
UTILITIES DIVISION	DATE
<i>Carl S. Dumont</i>	12-21-11
PARKS AND RECREATION DEPARTMENT	DATE
<i>Chris A. Jones</i>	12-21-11
CITY ENGINEER	DATE
<i>Lee Whitte 681-2766</i>	12-16-11
SOLID WASTE MANAGEMENT	DATE
<i>Jim Chon</i>	12-21-11
DRB CHAIRPERSON, PLANNING DEPARTMENT	DATE

VICINITY MAP



SITE INFORMATION

LEGAL DESCRIPTION
A PORTION OF THE WEST 1/2 OF LOT 1 AND A PORTION OF LOT 4, BLOCK C, LAVALAND ADDITION; AND A PORTION OF TRACT C-8, TOWN OF ATRISCO GRANT AIRPORT UNIT.

GROSS BUILDING AREA (GBA):
BUILDING (1 STORY) = 10,775 SF

TOTAL SITE AREA: 90,655 SF = 2.08 ACRES
GROSS F.A.R. (GBA/SITE AREA) = 0.12

SHEET KEYED NOTES

1. EXISTING CONCRETE SIDEWALK
2. ASPHALT PAVING
3. CMU SAND ENCLOSURE
4. CONCRETE WALK WITH CONTROL JOINTS
5. CONCRETE PAVED SERVICE YARD / CMU SCREEN WALL 7'-0" H.
6. LANDSCAPE AREA, TYP
7. TRASH ENCLOSURE CMU WALL W/CORRUGATED METAL PANEL GATES, RE: A2/AS-501
8. MOTORCYCLE PARKING
9. HANDICAP RAMP, RE: C1/AS-501
10. 20'-0" HEAVY DUTY CONCRETE PAVING
11. STANDARD CURB AND GUTTER. SEE COA STD. DWG. #2415B
12. PROPERTY LINE
13. SITE LIGHTING, POLE LIGHTS @ 15'-0" HIGH MAX.
14. BIKE RACK, RE: D4/AS-501
15. 18" HIGH CONCRETE SEAT WALL
16. "MOTORCYCLE PARKING ONLY" SIGN / RE: C3/AS-501
17. LITTER RECEPTACLE
18. CONCRETE BUMPER STOP
19. VAN ACCESSIBLE PARKING
20. VAN ACCESSIBLE SIGNAGE / RE: C3/AS-501
21. 4" WIDE PAINTED (SAFETY WHITE) STRIPING, TYP.
22. PAINTED A.D.A. PAVEMENT SIGNAGE
23. EXISTING FIRE HYDRANT
24. CURB PAINTED RED W/ SAFETY WHITE LETTERING "FIRE LANE - NO PARKING" @ 12'-0" O.C. DASHED LINE INDICATES EXTENT.
25. NOT USED
26. STORM DRAIN RE: CIVIL
27. BBQ GRILLE, N.I.C.
28. RETAINING WALL / CMU
29. SECURE FIREFIGHTER PARKING, 7' HIGH CMU SECURITY WALL
30. 6'-0" HIGH COMMERCIAL WELDED WIRE ARCHITECTURAL SECURITY FENCE W/ 3'-0" PERSONNEL DOOR
31. FLAG POLE
32. DASHED LINE REPRESENTS ENTRY CANOPY ABOVE
33. CONCRETE PUBLIC PATIO
34. NEW 6'-0" WIDE CONCRETE SIDEWALK, PER COA 2.430
35. CMU RETAINING WALL
36. CURB CUT FOR WATER HARVESTING
37. BILLBOARD SIGN TO REMAIN
38. BASECOURSE PAVING
39. ROLL OVER CURB
40. MANUAL ROLLING SECURITY GATE / PAD LOCK
41. ELECTRICAL TRANSFORMER, RE: ELECTRICAL
42. EXISTING POLE TO BE REMOVED BY OTHERS
43. 6'-0" WIDE CONCRETE SIDE WALK WITH SCORED PATTERN. RE: A1/AS-501.
44. SIDEWALK AROUND OBSTACLE, RE: COA STANDARD DETAIL NO.2431
45. SIDEWALK TRANSITION, RE: COA STANDARD DETAIL NO.2432
46. EXISTING UTILITY POLE

PARKING INFORMATION

1. **PARKING REQUIREMENTS FOR FIRE HOUSE:**
OCCUPANT LOAD FOR PUBLIC MEETING SPACE
1 SPACE FOR EACH 4 SEATS
PUBLIC ASSEMBLY SPACE PER COA ZONING CODE
20 SEATS = 5 PARKING SPACES
CREW PARKING SPACES = 12 (1 PER CREW MEMBER)
- TOTAL PARKING REQUIRED = 17 PARKING SPACES**
PROVIDED: 17 PARKING SPACES
2. **HANDICAP PARKING STALLS REQUIRED:**
1-25 STALLS: 1 HC STALL REQUIRED
(1 VAN ACCESSIBLE)
- PROVIDED: 1 HC STALL, VAN ACCESSIBLE**
3. **BICYCLE PARKING REQUIRED: (1:20 AUTOS)**
TOTAL: 2 SPACES
PROVIDED: 3 SPACES
4. **MOTORCYCLE PARKING REQUIRED:**
1-25 PARKING STALLS: 1 MOTORCYCLE SPACE REQUIRED
TOTAL: 1 SPACE
PROVIDED: 1 SPACE

Dekker/Perich/Sabatini
architecture • interiors • landscape • planning • engineering
7601 Jefferson NE, Suite 100 Albuquerque, NM 87110
505 761-4700 fax 761-4222

CITY OF ALBUQUERQUE
CAPITAL IMPLEMENTATION PROGRAM

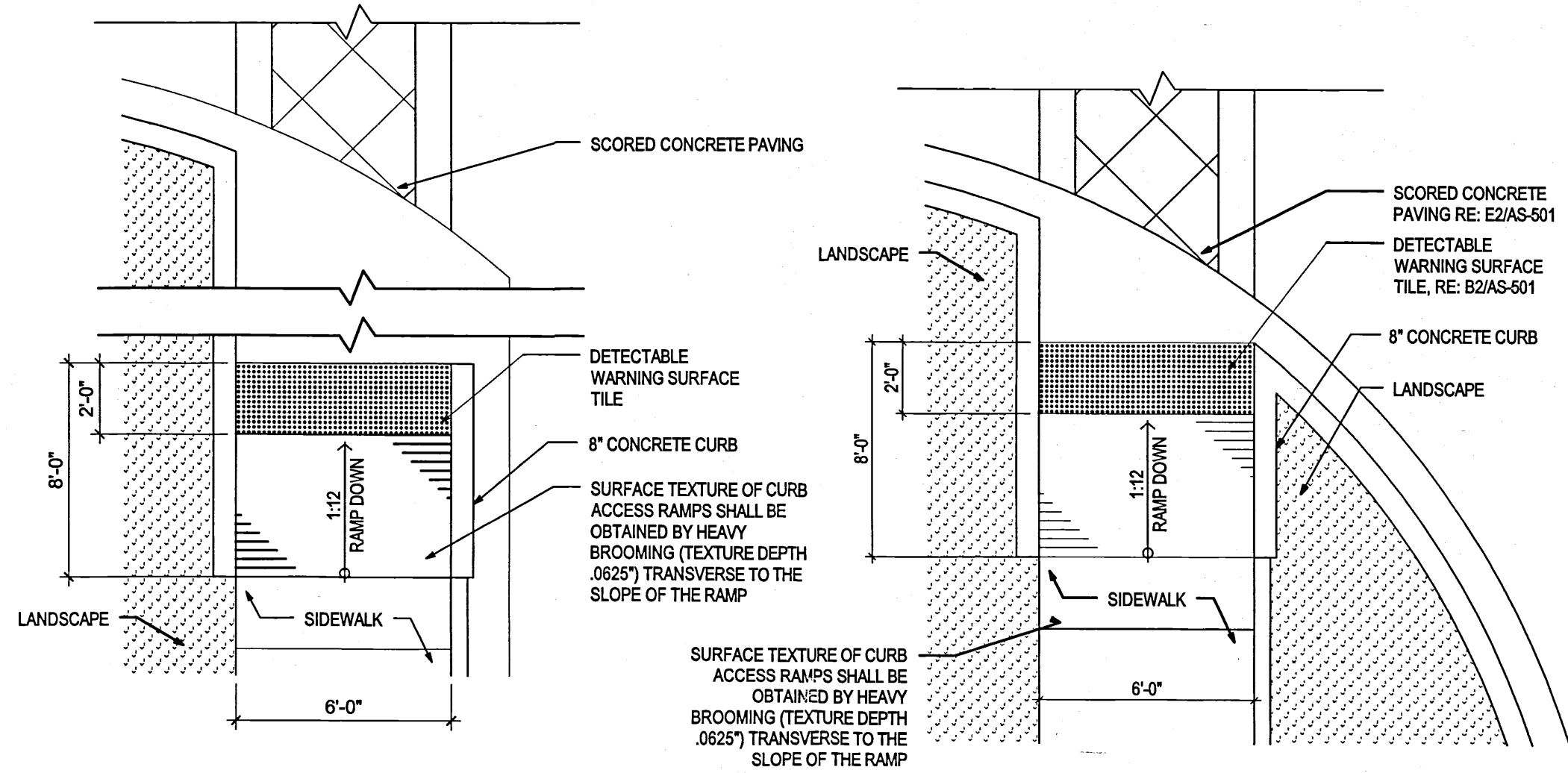
PROJECT TITLE: FIRE STATION 7
ALBUQUERQUE, NEW MEXICO

DRAWING TITLE: SITE PLAN

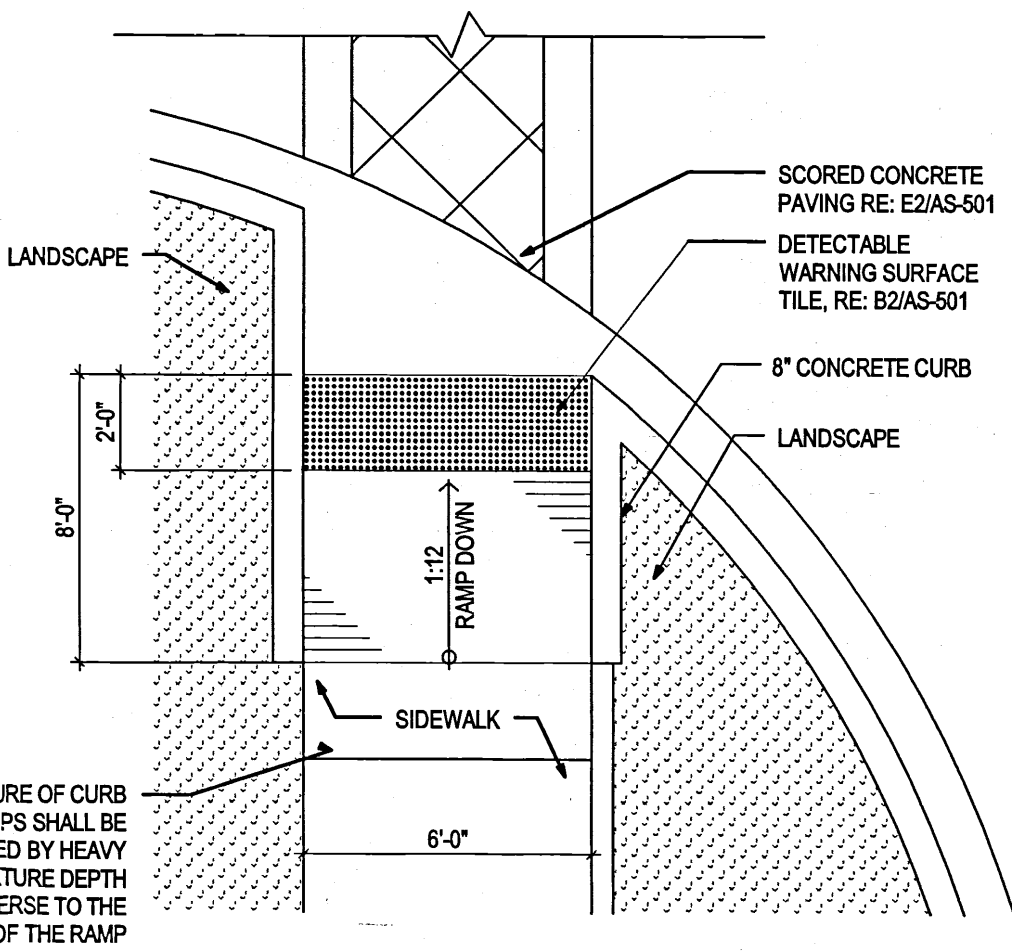
Design Review Committee	City Engineer Approval	Mo./Day/Yr.	Mo./Day/Yr.

City Project No. **8006.00** Zone Map No. **K-11-Z** DWG. **AS-101** Sheet **3** Of **13**

11-0016-7-AS-501 12/15/11 1:214-40441791

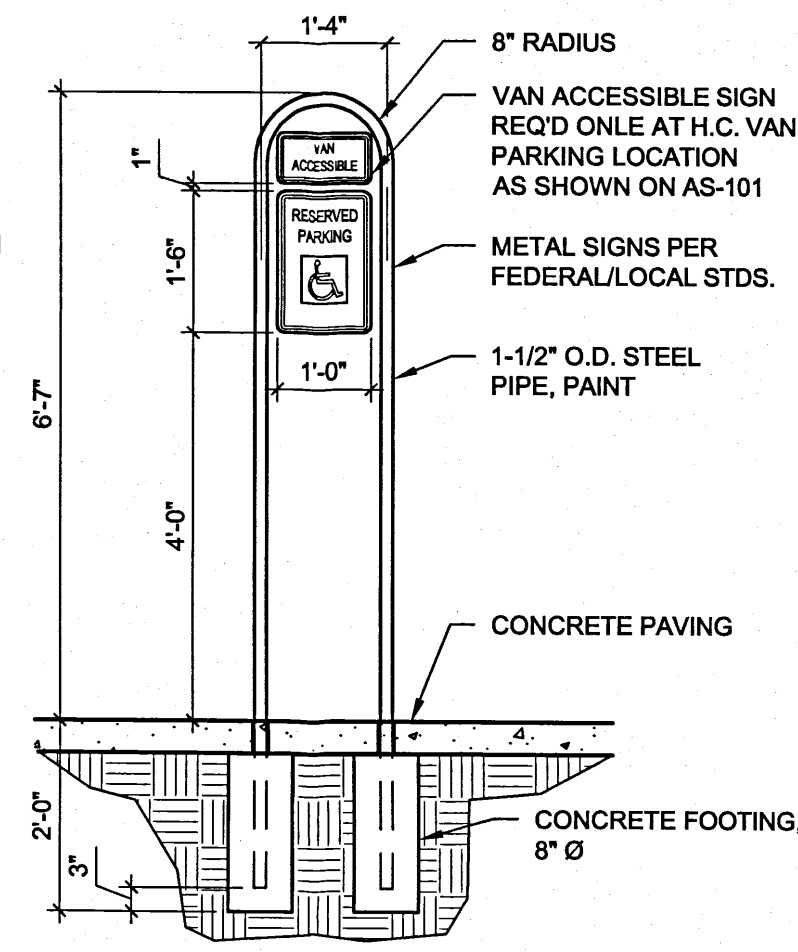


C1 HANDICAP RAMP
1/4" = 1'-0"

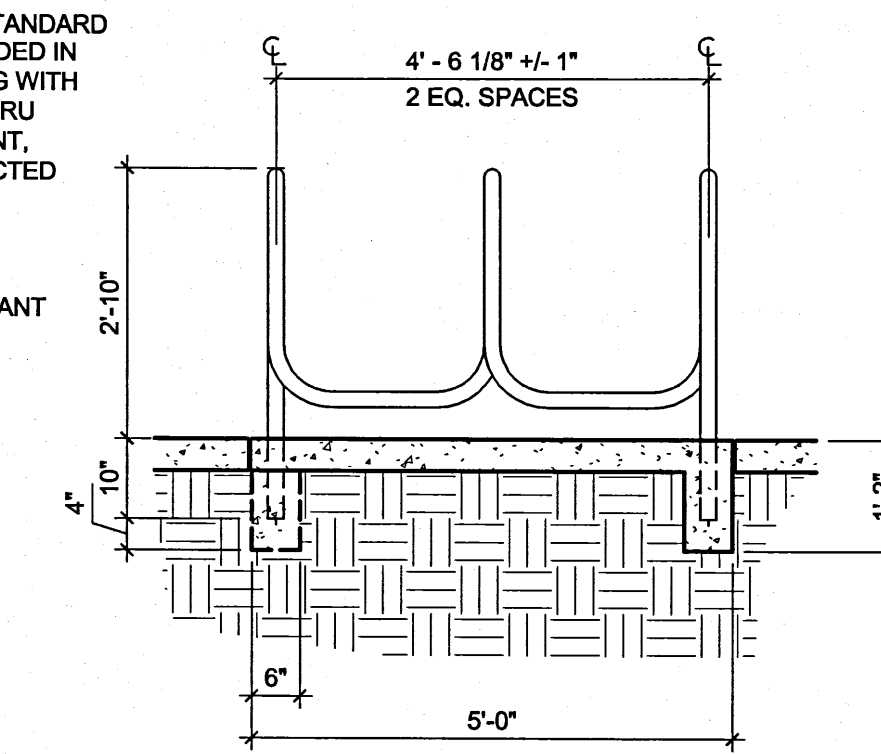


C2 HANDICAP RAMP
1/4" = 1'-0"

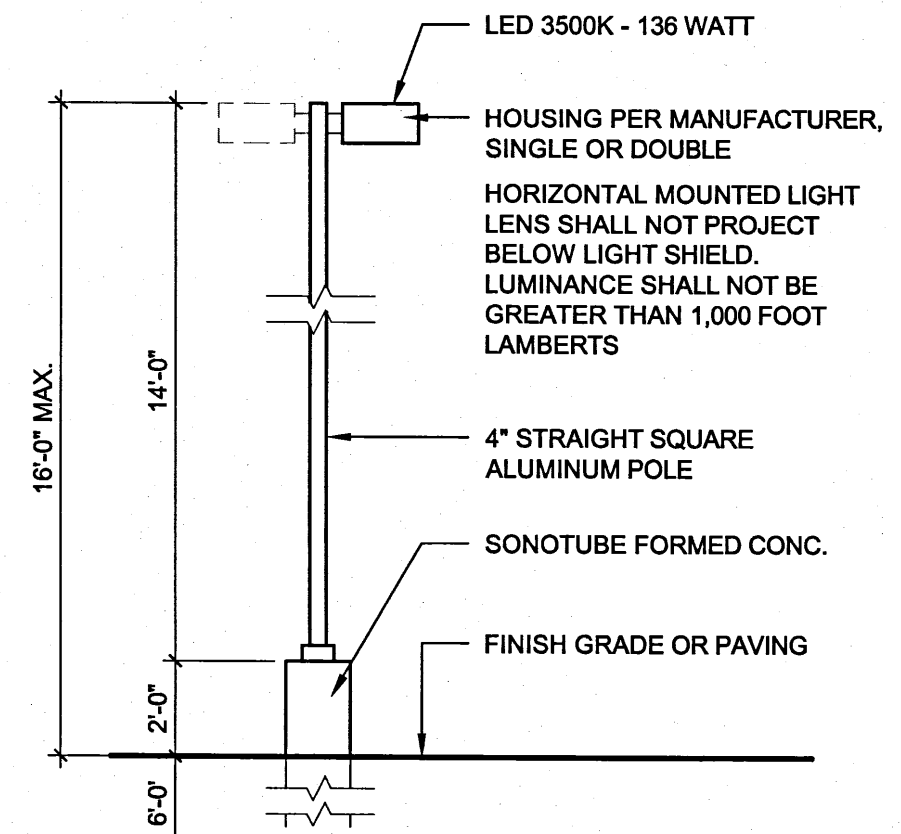
NOTE: MOTORCYCLE PARKING SIGNS WILL HAVE THE SAME POLE AND FOOTING AS THE HANDICAP SIGN SHOWN HERE, AND WILL BE MOUNTED IN SAME LOCATION.



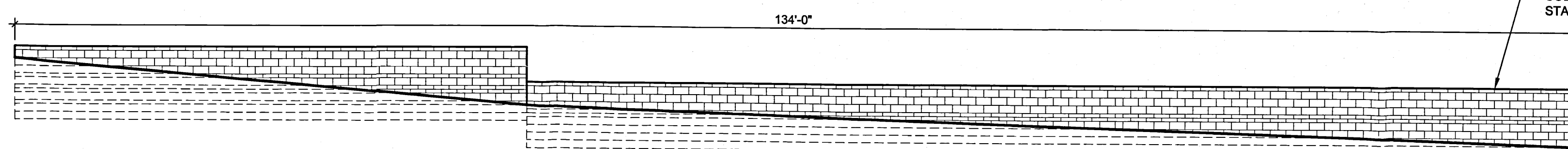
C3 H.C. PARKING SIGN
1/2" = 1'-0"



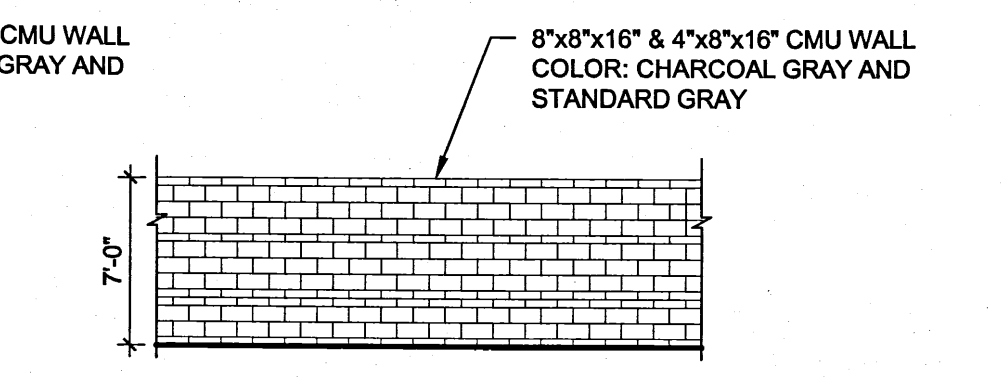
D4 BIKE RACK ELEVATIONS
1/2" = 1'-0"



C4 PARKING LOT LIGHT POLE
1/4" = 1'-0"

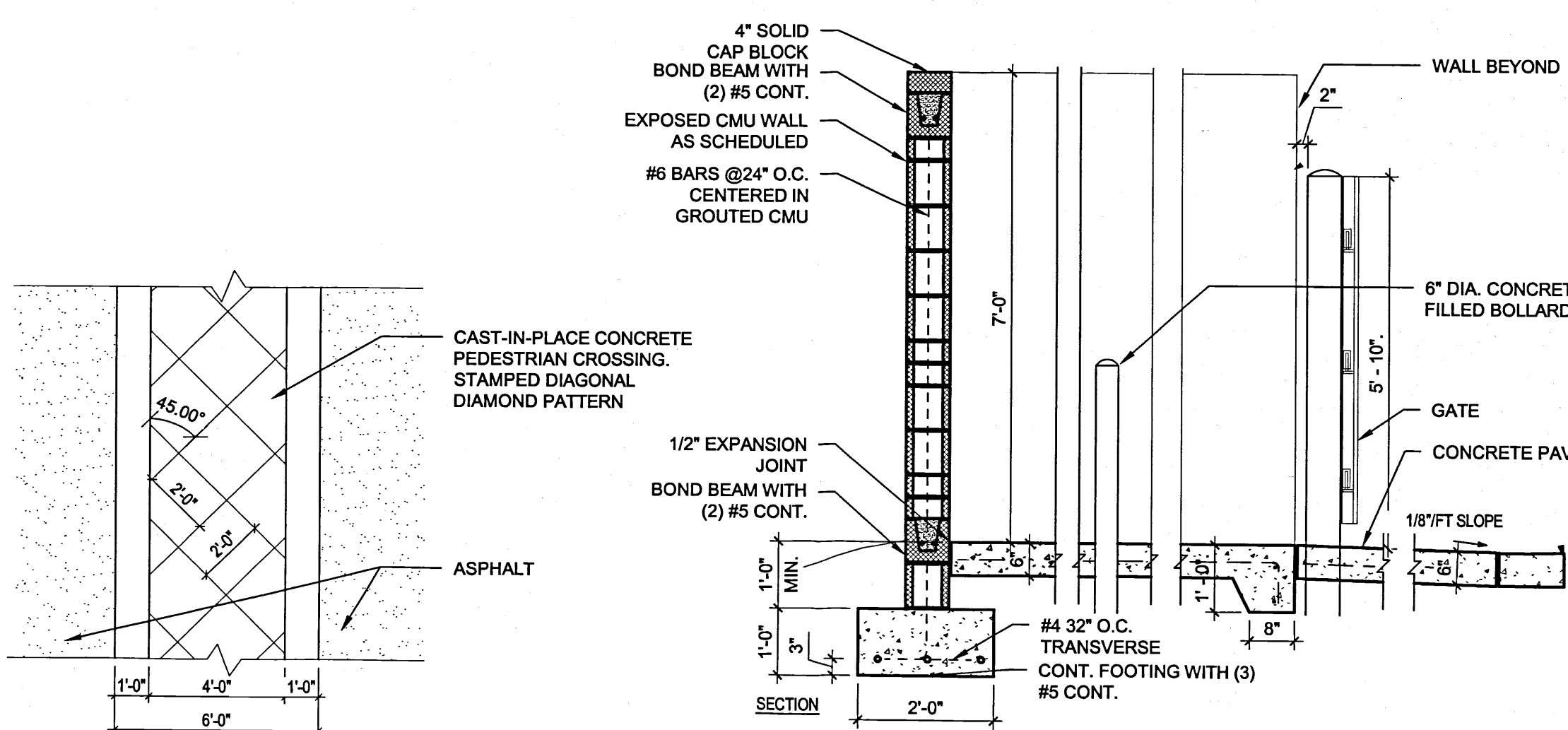


B3 CMU SITE WALL ELEVATION
1/8" = 1'-0"



B4 CMU SITE WALL ELEVATION
1/8" = 1'-0"

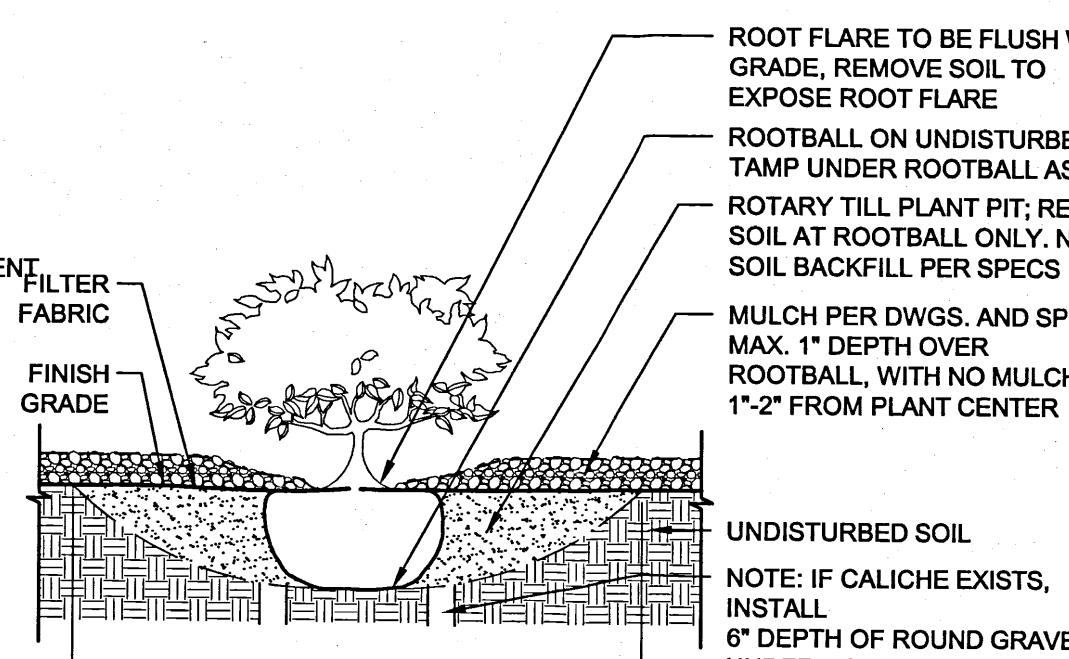
NOTE: 7' CMU SITE WALL LOCATED @ SECURITY WALL, TRASH ENCLOSURE, AND SERVICE YARD SCREEN WALL



A1 CONCRETE SIDEWALK
1/4" = 1'-0"

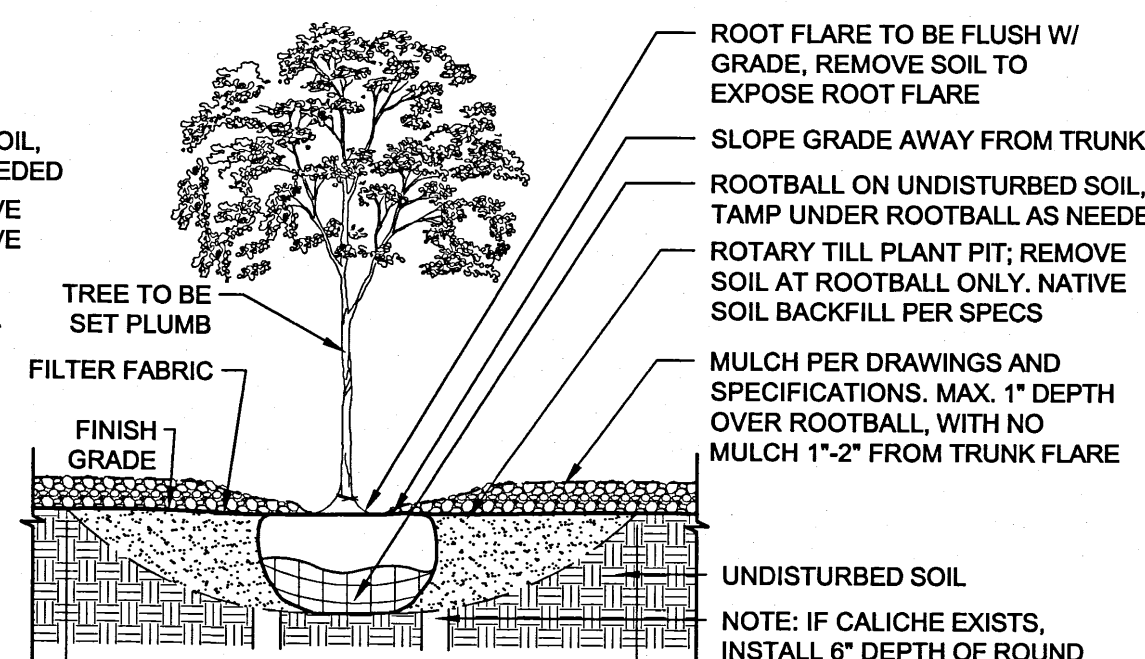
A2 REFUSE ENCLOSURE SECTION
1/2" = 1'-0"

NOTES:
1. PRIOR TO BACKFILLING, ALL MATERIAL SUCH AS CONTAINERS, WIRE, BURLAP, AND ROPE SHALL BE REMOVED AS COMPLETELY AS POSSIBLE, WHILE STILL PROTECTING THE INTEGRITY OF THE ROOTBALL
2. BOTTOM OF SHRUB PITS TO BE COMPACTED TO PREVENT SETTLING



A3 SHRUB
3/4" = 1'-0"

NOTES:
1. PRIOR TO BACKFILLING, ALL MATERIAL SUCH AS CONTAINERS, WIRE, BURLAP, AND ROPE SHALL BE REMOVED AS COMPLETELY AS POSSIBLE, WHILE STILL PROTECTING THE INTEGRITY OF THE ROOTBALL
2. BOTTOM OF TREE PITS TO BE COMPACTED TO PREVENT SETTLING



A4 TREE
3/4" = 1'-0"

Dekker/Perich/Sabatini
architecture • interiors • landscape • planning • engineering
7601 Jefferson NE, Suite 100 Albuquerque, NM 87109 505 761-9700 fax 761-4222

CITY OF ALBUQUERQUE
CAPITAL IMPLEMENTATION PROGRAM

PROJECT TITLE: FIRE STATION 7
ALBUQUERQUE, NEW MEXICO

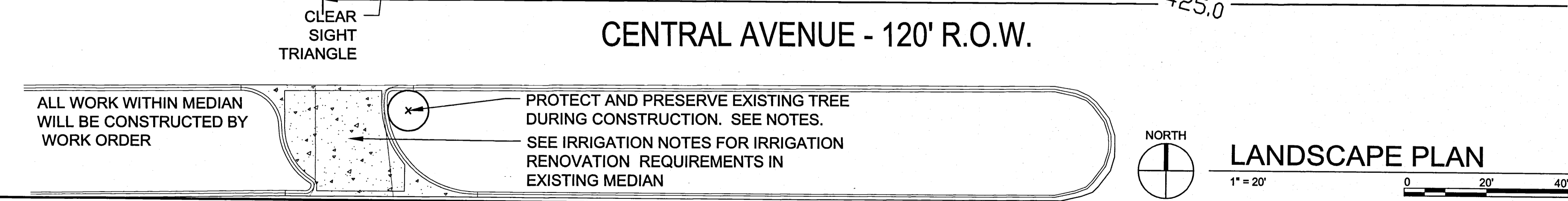
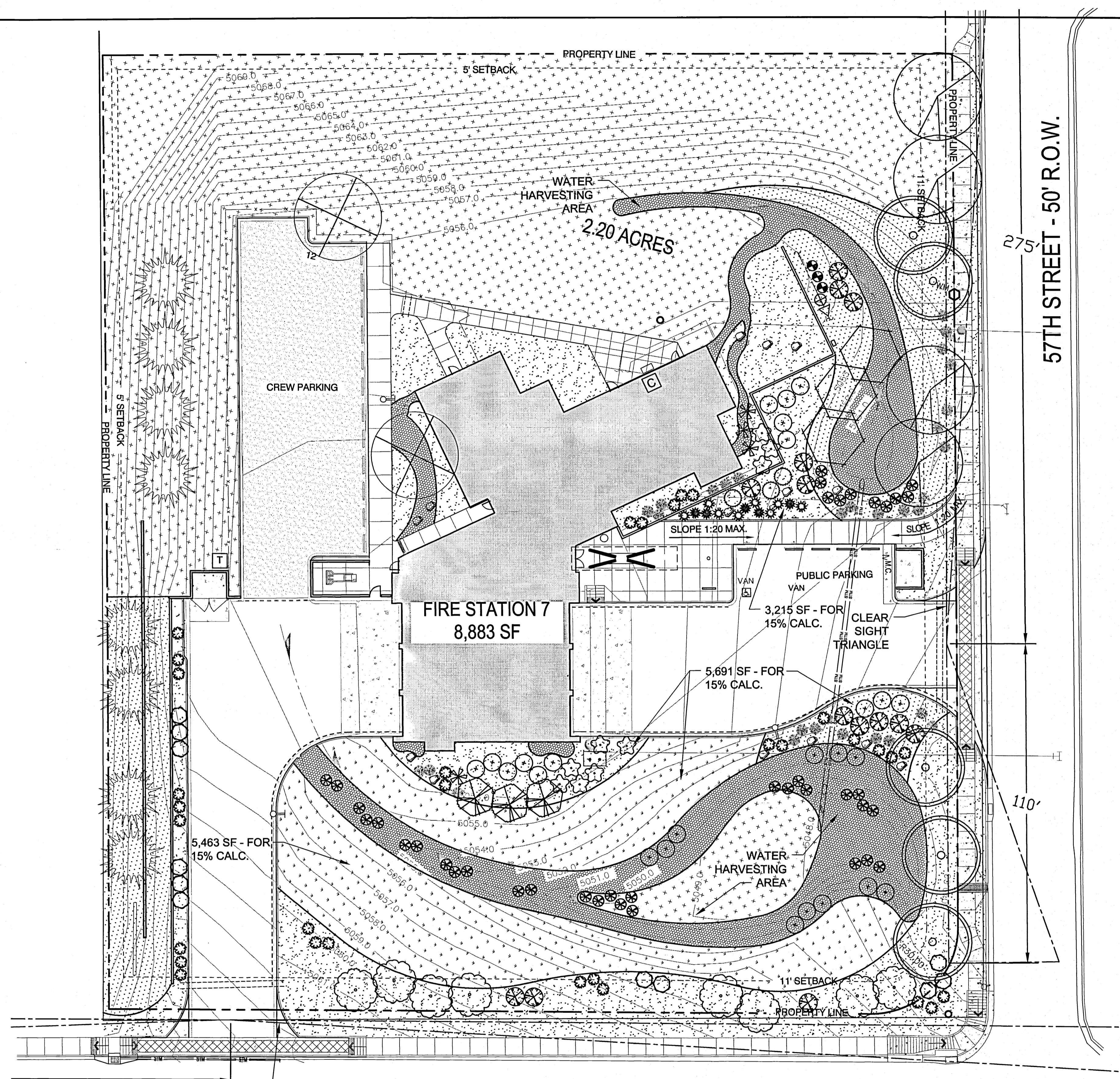
DRAWING TITLE: SITE DETAILS

Design Review Committee	City Engineer Approval	Mo./Day/Yr.	Mo./Day/Yr.

City Project No. 8006.00 Zone Map No. K-11-Z DWG. AS-501 Sheet 4 of 13

AS BUILT INFORMATION		BENCH MARKS		SURVEY INFORMATION		SEAL	
CONTRACTOR	DATE	NO.	BY	NO.	BY	NO.	BY
STARTED BY	DATE						
ACCEPTANCE BY	DATE						
REVISION BY	DATE						
DRAWINGS	DATE						
SUBMITTED BY	DATE						
MICRO-FILM INFORMATION							
RECORDED BY	DATE						

11-0016-LP-101 1/24/12 1:214.40441791



PLANTING NOTES

A. LANDSCAPE AREAS SHALL BE COVERED WITH MULCH AND FILTER FABRIC OR NATIVE SEED, SEE LEGEND FOR MATERIAL.
 B. TREE AND SHRUB PITS TO BE 4 TIMES THE ROOTBALL DIAMETER.
 C. WATER USE DESCRIPTION: PLANT MATERIALS HAVE BEEN CHOSEN FOR THEIR XERIC QUALITIES IN ADDITION TO THEIR AESTHETIC AND HABITAT VALUES.
 D. THERE IS NO HIGH WATER USE TURF USED ON THIS PROJECT.
 E. LINES SHOWN BETWEEN MULCH PATTERNS REPRESENT THE TRANSITION LINE, NO STEEL EDGING TO BE USED.
 F. THE LANDSCAPE DESIGN SHALL COMPLY WITH THE INTENT OF THE CITY OF ALBUQUERQUE WATER CONSERVATION, LANDSCAPING AND WATER WASTE ORDINANCE.
 G. SOIL PREPARATION AND AERATION WITHIN ROW IS REQUIRED TO DE-COMPACT LANDSCAPE ZONE PRIOR TO PLANTING.
 H. PASSIVE WATER HARVESTING, SUCH AS HARVESTING OF STORM WATER SURFACE RUNOFF AND ROOF RUNOFF, SHALL BE UTILIZED WHERE FEASIBLE AND CAPTURED IN SWALES.
 I. SOIL AMENDMENTS WILL BE USED FOR PLANT MATERIAL.
 J. MAINTENANCE WILL BE THE RESPONSIBILITY OF THE OWNER FOLLOWING SUBSTANTIAL COMPLETION OR ANY MAINTENANCE PERIODS.
 K. PROTECT AND PRESERVE EXISTING TREE IN MEDIAN PER TREE PROTECTION SPECIFICATIONS.

IRRIGATION LEGEND

SYMBOL TYPE
 [Symbol] CONTROLLER TO BE WALL MOUNTED IN MECHANICAL ROOM. SEE SPECIFICATIONS.
 [Symbol] BACKFLOW PREVENTER WITH HOT BOX. PROVIDE 120V POWER. SEE SPECIFICATIONS.
 [Symbol] MASTER VALVE. SEE SPECIFICATIONS.
 [Symbol] CONTROL VALVE SUGGESTED LOCATIONS. SEE SPECIFICATIONS.
 [Symbol] IRRIGATION BLEEVES SUGGESTED LOCATIONS. SEE SPECIFICATIONS.
 [Symbol] IRRIGATION MAINLINE SUGGESTED LOCATIONS. SEE SPECIFICATIONS.

PLANTING LEGEND

TREES - SEE COA STD. DETAIL 2710, 2714 & 2716

SYMBOL	EST. QTY.	COMMON NAME	SCIENTIFIC NAME	INSTALL SIZE	MATURE HEIGHT	MATURE WATER USE WIDTH
[Symbol]	5	CHINESE PISTACHE	<i>Platanus chinensis</i>	2-1/2" CAL.	35.00	MEDIUM
[Symbol]	4	FRONTIER ELM	<i>Ulmus hybrid "Frontier"</i>	2-1/2" CAL.	40.00	MEDIUM
[Symbol]	2	JAPANESE PAGODA TREE	<i>Sophora japonica Regent</i>	1-1/2" CAL.	35.00	MEDIUM
[Symbol]	3	DESERT WILLOW	<i>Chilopsis linearis</i>	24" BOX MULTI-TRUNK	20.00	LOW
[Symbol]	3	SMOKETREE	<i>Cotinus coggygria</i>	24" BOX MULTI-TRUNK	15.00	MEDIUM
[Symbol]	8	PURPLE LEAF PLUM	<i>Prunus coccinea</i>	1-1/2" CAL.	20.00	MEDIUM
[Symbol]	8	AUSTRIAN PINE	<i>Pinus nigra</i>	8" FT.	40.00	MEDIUM

SHRUB - SEE COA STD. DETAIL 2711 & 2717

SYMBOL	EST. QTY.	COMMON NAME	SCIENTIFIC NAME	INSTALL SIZE	MATURE HEIGHT	MATURE WATER USE WIDTH
[Symbol]	11	CHAMISA	<i>Chrysothamnus nauseosus</i>	5-GAL.	6.00	LOW
[Symbol]	25	CURL-LEAF MAHOGANY	<i>Cercocarpus lectolus</i>	5-GAL.	6.00	LOW
[Symbol]	14	SPANISH BROOM	<i>Spartium junceum</i>	5-GAL.	4.00	MEDIUM
[Symbol]	39	THREE LEAF SUMAC	<i>Rhus trilobata</i>	1-GAL.	4.00	LOW
[Symbol]	8	DAMAZITA	<i>Chrysothamnus mexicanus</i>	1-GAL.	2.00	LOW
[Symbol]	10	CREeping THREE-LEAF SUMAC	<i>Rhus trilobata "Autumn Amber"</i>	1-GAL.	2.00	MEDIUM

SUCCULENT - SEE COA STD. DETAIL 2711 & 2717

SYMBOL	EST. QTY.	COMMON NAME	SCIENTIFIC NAME	INSTALL SIZE	MATURE HEIGHT	MATURE WATER USE WIDTH
[Symbol]	5	PARRY'S AGAVE	<i>Agave parryi var. Parry</i>	5-GAL.	1.50	LOW
[Symbol]	4	SOTOL	<i>Dasylirion wheeleri</i>	5-GAL.	4.00	LOW
[Symbol]	32	TEXAS RED YUCCA	<i>Hesperaloe parviflora</i>	5-GAL.	4.00	LOW
[Symbol]	3	ENGELMANN'S PRICKLY PEAR	<i>Opuntia engelmannii</i>	5-GAL.	4.00	LOW
[Symbol]	30	BEARGRASS	<i>Nolina macrocarpa</i>	5-GAL.	4.00	LOW

MULCH/SEED

SYMBOL	TYPE
[Symbol]	14,300 SF 3" DEPTH 1" GRAVEL OVER FILTER FABRIC, COLOR: AMARETTO BROWN
[Symbol]	7,600 SF 3" DEPTH 1/4" GRAVEL OVER FILTER FABRIC, COLOR: BLUE SAIS
[Symbol]	7,400 SF 6" DEPTH 5/12" ANGULAR COBBLE OVER FILTER FABRIC, COLOR: SUNSET ROSE
[Symbol]	8,700 SF 1" DEPTH 1" GRAVEL, NO FILTER FABRIC, COLOR: BLUE SAIS WITH BUFFALO BILLIE GRAMA SEED MIX (SPRAY BRACKETED) APPLICATION: DRILL SEEDING PRIOR TO MULCH INSTALLATION WITH HAND BROADCASTING AFTER MULCH INSTALLATION. RATE: 2 LBS/1000 SF
[Symbol]	27,000 SF 1" DEPTH 1/4" GRAVEL, NO FILTER FABRIC, COLOR: BLUE SAIS WITH NATIVE SEED (NOT IRRIGATED)

NATIVE SEED: COA WEED/BIOMIX

COMMON NAME	SCIENTIFIC NAME	RATE
INDIAN RICE GRASS	<i>Chrysopsis hymenoides</i>	1.0
VIVA GALLETIA GRASS	<i>Hilaria jermolii</i>	1.0
SIDE OATS GRAMA	<i>Bouteloua curtipendula</i>	1.0
HATCHITA BLUE GRAMA	<i>Bouteloua gracilis</i>	1.0
SAND DROPSIED	<i>Sporobolus erythroides</i>	1.0
FOURWING SALTBLUSH	<i>Atriplex canescens</i>	1.0

TOTAL RATE: 12.0 LBS/SACRE

[Symbol] 14 LANDSCAPE BOULDER, SIZE: 3/4" X 2 1/2" X 2 1/2", COLOR: BASALT

IRRIGATION NOTES

A. THE LANDSCAPE DESIGN REQUIRES A PERMANENT, FULLY AUTOMATIC IRRIGATION SYSTEM TO SUPPORT THE PLANT MATERIAL.
 B. THE IRRIGATION SYSTEM WILL BE CONNECTED TO CITY WATER. THE POINT OF CONNECTION WILL CONSIST OF A WATER METER, BACKFLOW PREVENTER AND MASTERVALVE. SEE COA STD DETAIL #2701.
 C. THE CONTRACTOR SHALL DESIGN AN IRRIGATION PLAN TO PERMANENTLY IRRIGATE THE PROPOSED PLANTINGS, AND SHALL SUBMIT THIS TO THE ARCHITECT FOR REVIEW AND APPROVAL. THE IRRIGATION DESIGN SHALL FOLLOW COA STD. SPECIFICATION #1001 -LANDSCAPE IRRIGATION SYSTEM AND DETAILS SECTION 2700 OF THE STANDARD SPECIFICATIONS FOR PUBLIC WORKS 1998, INCORPORATING UPDATE #6, JANUARY 2011. THE PLAN SHALL INCLUDE A PIPING AND EMITTER LAYOUT WITH SIZING, VALVE SCHEDULE AND CONSTRUCTION DETAILS.
 D. CONTRACTOR: THE IRRIGATION SYSTEM SHALL BE RUN WITH FULLY AUTOMATED IRRIGATION CONTROLLER. RUN TIME WILL BE ADJUSTED ACCORDING TO PLANT MATURITY, SEASON, LOCATION, AND PLANT PERFORMANCE.
 E. DRIP EMITTERS SHALL BE USED FOR ALL SHRUBS AND TREES. SPRAY IRRIGATION WILL BE USED FOR SEED MAINTENANCE.
 F. MAINTENANCE WILL BE THE RESPONSIBILITY OF THE OWNER FOLLOWING SUBSTANTIAL COMPLETION OR ANY MAINTENANCE PERIODS.
 G. EXISTING IRRIGATION SYSTEM RENOVATION AT MEDIAN:
 1. CONTRACTOR SHALL AUDIT EXISTING BUBBLER SYSTEM IN MEDIAN FOR ZONE/LATERAL CONSTRUCTION.
 2. CONTRACTOR SHALL POT-HOLE AND LOCATE MAINLINE, LATERALS AND LOW-VOLTAGE CONTROL WIRES.
 3. CONTRACTOR SHALL DEMOLISH SHRUBS AND ASSOCIATED BUBBLERS AND REINSTALL MAINLINE AND LATERAL LINES WITH 4" PVC SCH-40 SLEEVE, MIN. 15' LENGTH UNDER NEW CONCRETE CURB CUT. MINIMUM BURY DEPTH SHALL BE 2' BELOW FINISH GRADE.
 4. CONTRACTOR SHALL CUT LOW VOLTAGE WIRES; SLEEVE WIRES UNDER NEW CONCRETE CURB CUT AND PROVIDE JUNCTION BOX FOR RECONNECTED WIRES PER COA DETAILS.
 5. EXISTING SYSTEM AND CONTROLS SHALL BE FULLY OPERATIONAL AT THE CONCLUSION OF CONSTRUCTION WITHIN THE MEDIAN.
 6. CONTRACTOR SHALL MAINTAIN THE REGULAR COA WATERING SCHEDULE TO THE MEDIANS DURING CONSTRUCTION.
 7. CONTACT MIKE WITTMER, COA PARKS AND RECREATION FOR CITY ASSISTANCE -CELL# 452-7403

AS BUILT INFORMATION

CONTRACTOR	DATE

BENCH MARKS

NO.	DATE

SURVEY INFORMATION

NO.	BY	DATE

FIELD NOTES

NO.	BY	DATE

SEAL

NO.	DATE	REVISIONS	DESIGN

Dekker/Perich/Sabatini
 architecture • interiors • landscape • planning • engineering
 7801 Jefferson NE, Suite 100 Albuquerque, NM 87109
 505 761-9700 fax 761-4222

CITY OF ALBUQUERQUE CAPITAL IMPLEMENTATION PROGRAM

PROJECT TITLE: FIRE STATION 7 ALBUQUERQUE, NEW MEXICO

DRAWING TITLE: LANDSCAPE PLAN

Design Review Committee	City Engineer Approval	Mo./Day/Yr.	Mo./Day/Yr.

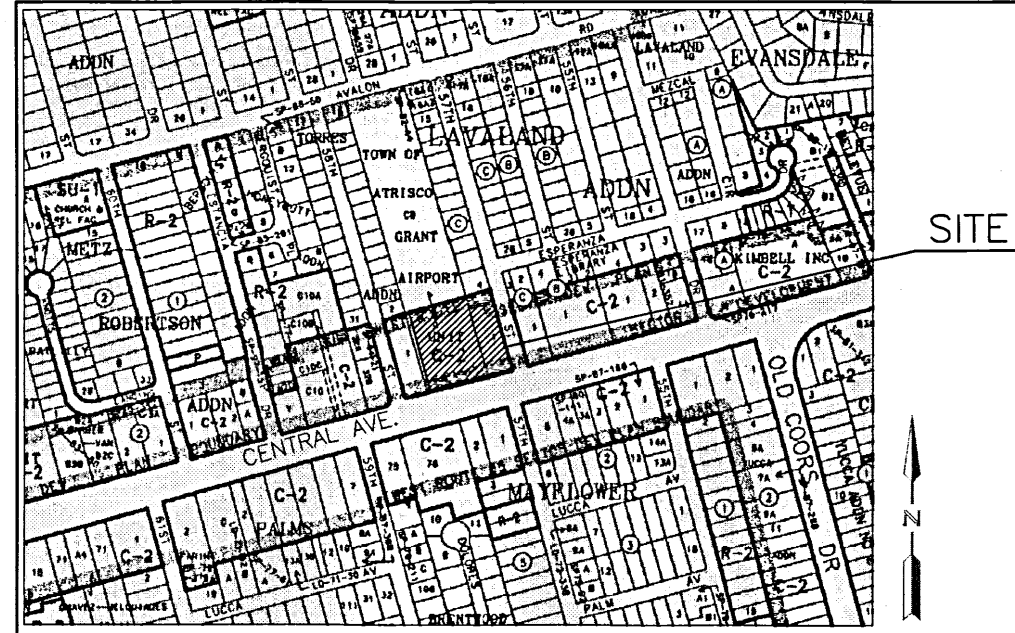
City Project No. 8006.00 Zone Map No. K-11-Z DWG. LP-101 Sheet 5 of 13

LANDSCAPE CALCULATIONS

SITE AREA: 95,701 SF = 2.20 ACRES
 TOTAL BUILDING FOOTPRINT: 8,800 SF
 NET SITE AREA: 86,901 SF
 REQUIRED LANDSCAPE AREA: 13,035 SF (15% OF NET SITE AREA)
 PROVIDED LANDSCAPE AREA: 14,369 SF (WITH 75% VEGETATIVE GROUND COVER) (17% OF NET SITE AREA / 15% OF TOTAL SITE AREA)
 TOTAL PERMEABLE AREA: 66,589 SF

STREET TREES:
 CENTRAL AVE: 243 LF / 30' SPACING PER TREE = 8 TREES REQUIRED
 PROVIDED STREET TREES AT CENTRAL AVE: 8

57TH ST: 257 LF / 30' SPACING PER TREE = 8.6 TREES REQUIRED
 PROVIDED STREET TREES AT 57TH ST: 9



VICINITY MAP
ZONE ATLAS MAP K-11
N.T.S.

PLAT OF
TRACTS C-8-A & C-8-B
TOWN OF ATRISCO, AIRPORT UNIT
WITHIN
PROJECTED SECTION 23, T10N, R2E, NMPM
TOWN OF ATRISCO GRANT, CITY OF ALBUQUERQUE
BERNALILLO COUNTY, NEW MEXICO
JUNE 2011

CITY OF ALBUQUERQUE FIRE STATION NO. 7

DRAINAGE ANALYSIS

INTRODUCTION

PURPOSE AND SITE LOCATION

Fire Station No. 7 will be located at the NW corner of Central Ave and 57th St on a 2.24 acre site of predominately undeveloped property. The City of Albuquerque owns the development property.

The existing stormwater discharge flows across the property generally from NW to SE. Off-site flows are generally from the north to the south. Flows from the property enter into 57th St. or Central Ave. and eventually into a 24-inch storm drain located within the westbound lanes of Central Ave.

CRITERIA

The proposed grading and drainage for the development of this site are based on the criteria in the City of Albuquerque Development Process Manual (DPM) Chapter 22. Flow calculations are based on the 100-yr, 6-hr design storm. The area of study was divided into two basins; Basin A-1 is a 3.32-ac off-site basin located to the north of the proposed site and Basin A-2 is the 2.24-acre Fire Station No. 7 site.

The off-site and on-site flows will be collected through grading and culverts and routed through a pond. The initial 0.44-in rainfall on the property will be retained in the pond at the request of the City of Albuquerque for storm water treatment purposes. Discharge from the pond will be into the 15-inch storm drain in 57th St which discharges into the 24-inch storm drain in Central Ave.

EXISTING CONDITIONS

The 2.24 acre Fire Station No. 7 site and the 3.32-acre contributing adjacent basin are primarily undeveloped. Basins adjacent to these two basins are fully developed and discharge to adjacent roadways and do not flow through the proposed development. The existing drainage flow for the subject basins travel from north and northwest to south and southeast to 57th St and Central Ave. The discharge from the site enters into the COA operated and maintained storm drainage system in Central Ave.

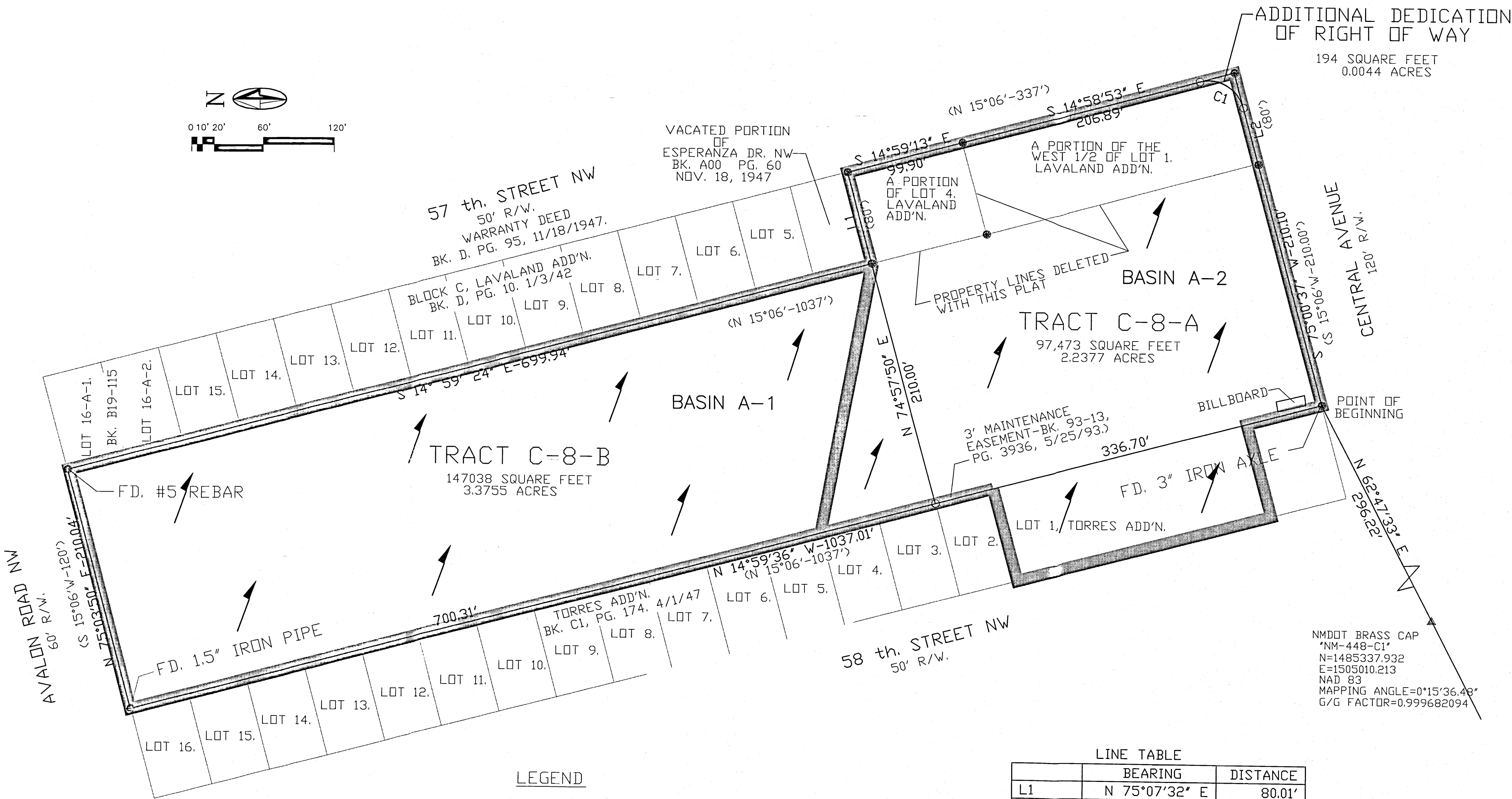
DEVELOPED CONDITIONS

Off-site flows are maintained with the undeveloped existing conditions in this analysis. The on-site flows have been calculated with fully developed conditions from the proposed site plan. The drainage pond proposed for the southeast quadrant of the site has been sized to retain approximately 0.44-in of the initial storm flows. A 12-inch storm drain connected to the existing 15-inch storm drain in 57th St is used for the pond discharge. The initial 0.44-inch volume will be retained and filtered through a gravel pond bottom as a treatment method.

Basin	Areas (ac)	EXISTING CONDITIONS				FLOW (cfs)	VOL (ac ft)
		A	B	C	D		
A-1	3.32	0	0	100	0	9.63	.275
A-2	2.24	0	0	100	0	6.30	.180

Basin	Areas (ac)	DEVELOPED CONDITIONS				FLOW (cfs)	VOL (ac ft)
		A	B	C	D		
A-1	3.32	0	0	100	0	9.63	.275
A-2	2.24	0	0	60	40	7.56	.251

NMDDT BRASS CAP
"NM-448-C1"
N=1485337.932
E=1505010.213
NAD 83
MAPPING ANGLE=0°15'36.48"
G/G FACTOR=0.999682094



LEGEND

- F.D. STEEL BATHEY MARKER STAMPED " CARTESIAN SURVEYS- LS 14271" OR AS NOTED.
- SET NO. 5 REBAR WITH CAP STAMPED "PS 7924".

LINE	BEARING	DISTANCE
L1	N 75°07'32" E	80.01'
L2	S 75°06'15" W	49.81'

CURVE	ARC	DELTA	RADIUS	TANGENT	CH. BRG.	CH. DIST.
C1	47.17	90°05'08"	30.00'	30.04'	S30°03'41"W	42.46'

LEGEND

- BASIN BOUNDARY
- BASIN A-1 BASIN DESIGNATOR
- DIRECTION OF FLOW

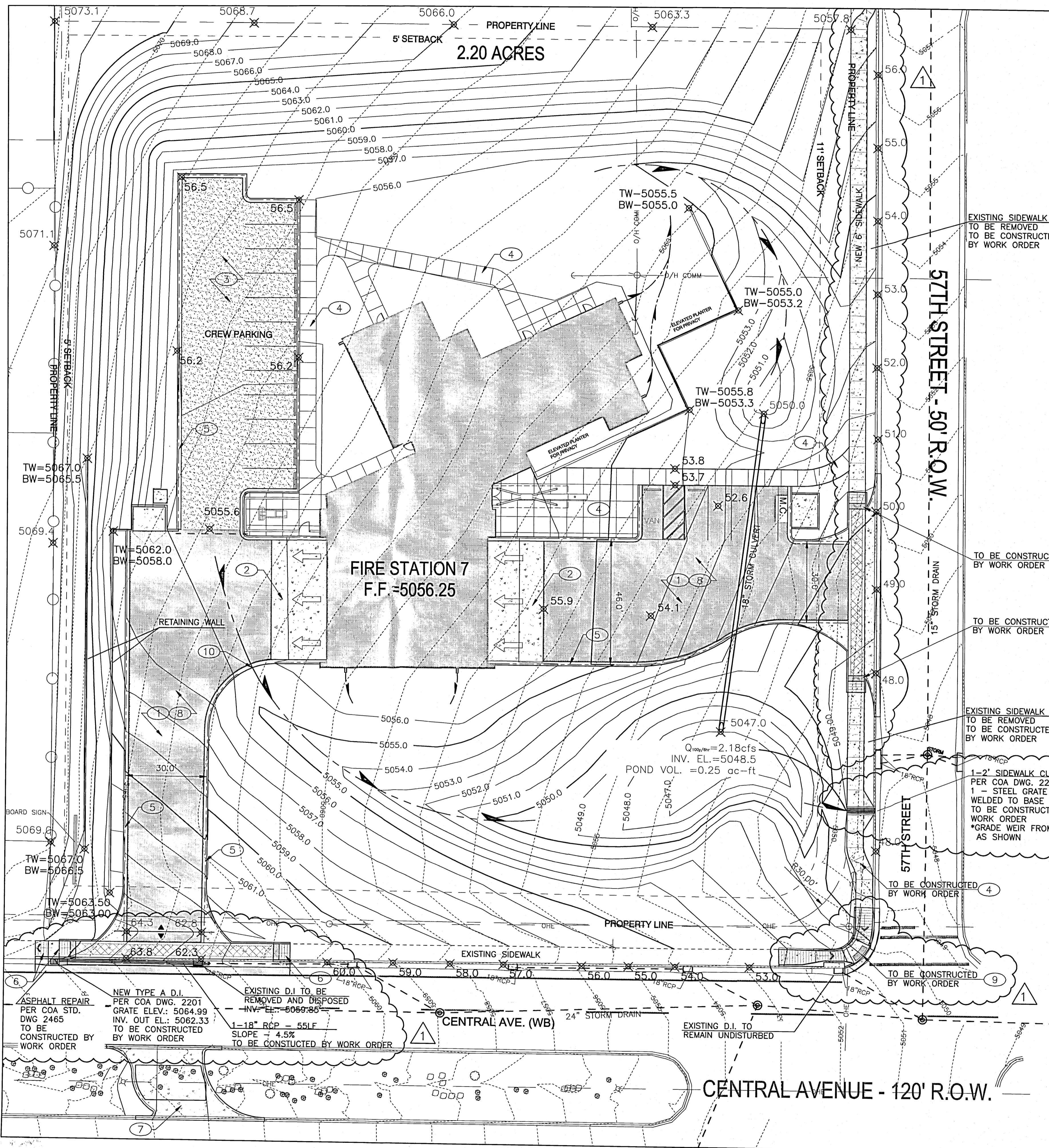
MOLZENCORBIN

CITY OF ALBUQUERQUE
PUBLIC WORKS DEPARTMENT
ENGINEERING DEVELOPMENT GROUP

TITLE:
**FIRE STATION 7
ALBUQUERQUE, NEW MEXICO
GRADING AND DRAINAGE**

Design Review Committee	City Engineer Approval	Mo./Day/Yr.	Mo./Day/Yr.
City Project No. 8006.91		Zone Map No. K-11	DWG. C-101A
Sheet 6		Of 13	

AS BUILT INFORMATION		BENCH MARKS		SURVEY INFORMATION		ENGINEER'S SEAL
CONTRACTOR	DATE	NO.	DATE	NO.	DATE	
STAKED BY	DATE	NO. <td>DATE</td> <td>NO. <td>DATE</td> <td rowspan="2"> </td> </td>	DATE	NO. <td>DATE</td> <td rowspan="2"> </td>	DATE	
INSPECTOR'S FIELD CHANGE BY	DATE	NO. <td>DATE</td> <td>NO. <td>DATE</td> </td>	DATE	NO. <td>DATE</td>	DATE	
VERIFICATION BY	DATE	NO. <td>DATE</td> <td>NO. <td>DATE</td> <td>DESIGNED BY</td> </td>	DATE	NO. <td>DATE</td> <td>DESIGNED BY</td>	DATE	DESIGNED BY
CORRECTED BY	DATE	NO. <td>DATE</td> <td>NO. <td>DATE</td> <td>DRAWN BY</td> </td>	DATE	NO. <td>DATE</td> <td>DRAWN BY</td>	DATE	DRAWN BY
MICRO-FILM INFORMATION	DATE	NO. <td>DATE</td> <td>NO. <td>DATE</td> <td>CHECKED BY</td> </td>	DATE	NO. <td>DATE</td> <td>CHECKED BY</td>	DATE	CHECKED BY
RECORDED BY	DATE	NO. <td>DATE</td> <td>NO. <td>DATE</td> <td></td> </td>	DATE	NO. <td>DATE</td> <td></td>	DATE	



LEGEND

- GRADED FLOWLINE
- 5814.50 — NEW TOPOGRAPHIC CONTOUR
- 5814.50 — EXISTING TOPOGRAPHIC CONTOUR
- MISC. PROPERTY LINE
- GRADE BREAK (RIDGE)
- NEW ASPHALT
- CONCRETE PAVEMENT
- BASECOURSE PAVEMENT

- GENERAL NOTES**
- ALL EXISTING UTILITIES MAY NOT BE SHOWN.
 - EXISTING SERVICE CONNECTIONS ARE NOT SHOWN.
 - ANY EXISTING UTILITIES THAT ARE SHOWN ARE SHOWN IN APPROXIMATE LOCATION ONLY.
 - IT SHALL BE THE RESPONSIBILITY OF THE CONTRACTOR TO CONTACT ALL UTILITY OWNERS AND CONDUCT ALL NECESSARY FIELD INVESTIGATIONS PRIOR TO ANY EXCAVATIONS OF EXISTING UTILITIES THAT MAY BE AFFECTED BY NEW CONSTRUCTION.
 - STORM RUN-OFF CONVEYANCE AND PROPER DRAINAGE SHALL BE THE RESPONSIBILITY OF CONTRACTOR DURING CONSTRUCTION AND WHEN FINISHED. ALL ROOF DRAINS, CULVERTS AND SLOPED AREAS SHALL DRAIN PROPERLY AS SHOWN ON PLAN OR DIRECTED BY ENGINEER.

- KEYED NOTES**
- ASPHALT SURFACE. SEE TYPICAL SECTION DWG C-501.
 - CONCRETE APRON. SEE TYPICAL SECTION DWG C-501.
 - BASECOURSE PAVEMENT PARKING AREA. SEE TYPICAL SECTION DWG C-501.
 - 6" WIDE CONCRETE SIDEWALK. SEE TYPICAL SECTION DWG C-501.
 - MEDIAN CURB AND GUTTER. PER COA STD. DWG. 2415B.
 - CONCRETE DRIVEWAY AND RAMPS. SEE DETAIL DWG AS-501
 - CONCRETE MEDIAN CROSSOVER. SEE DETAILS DWG C-501
 - ADD. ALT. #2 - CONCRETE PAVEMENT SURFACE IN LIEU OF ASPHALT. SEE TYPICAL SECTION DWG C-501
 - ADA RAMP PER COA STD. DWG. 2441
 - 10' CURB CUT TO ALLOW DRAINAGE IN TO POND. CONTRACTOR TO ENSURE CENTER OF CURB IS THE LOW POINT.

HYDROLOGY ANALYSIS

CITY OF ALBUQUERQUE FIRE STATION NO. 7

DRAINAGE ANALYSIS

INTRODUCTION

PURPOSE AND SITE LOCATION

Fire Station No. 7 will be located at the NW corner of Central Ave and 57th St on a 2.24 acre site of predominately undeveloped property. The City of Albuquerque owns the development property.

The existing stormwater discharge flows across the property generally from NW to SE. Off-site flows are generally from the north to the south. Flows from the property enter into 57th St. or Central Ave. and eventually into a 24-inch storm drain located within the westbound lanes of Central Ave.

CRITERIA

The proposed grading and drainage for the development of this site are based on the criteria in the City of Albuquerque Development Process Manual (DPM) Chapter 22. Flow calculations are based on the 100-yr, 6-hr design storm. The area of study was divided into one basin; Basin A-2 is the 2.24-acre Fire Station No. 7 site.

The off-site and on-site flows will be collected through grading and culverts and routed through a pond. The water collected in the pond will then be discharged over a weir and through a sidewalk culvert into the street where it will be collected by existing curb inlets located on 57th Street.

EXISTING CONDITIONS

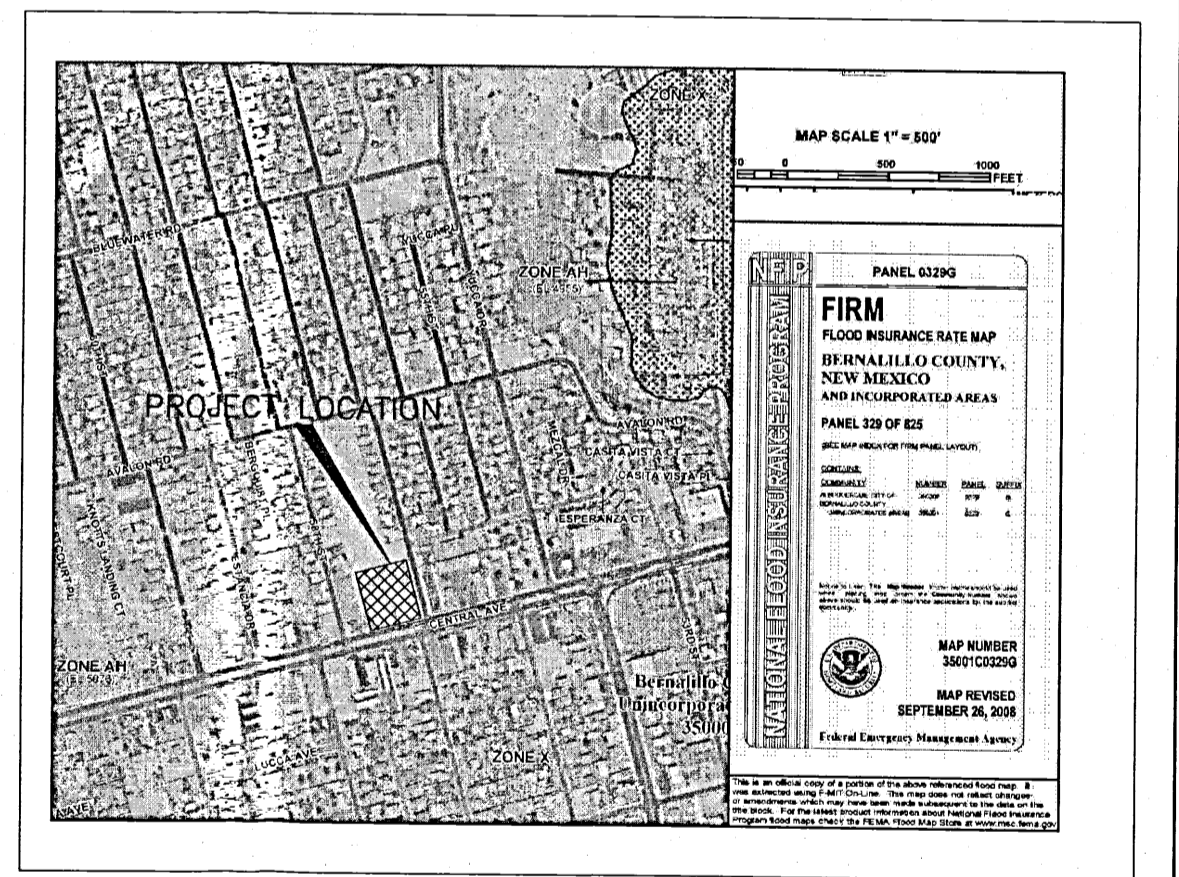
The 2.24 acre Fire Station No. 7 site is primarily undeveloped. Basins adjacent to these two basins are fully developed and discharge to adjacent roadways and do not flow through the proposed development. The existing drainage flow for the subject basins travel from north and northwest to south and southeast to 57th St and Central Ave. The discharge from the site enters into the COA operated and maintained storm drainage system in Central Ave.

DEVELOPED CONDITIONS

Off-site flows are maintained with the undeveloped existing conditions in this analysis. The on-site flows have been calculated with fully developed conditions from the proposed site plan. The drainage pond proposed for the southeast quadrant of the site has been sized to retain 100% of the flows on the site. The pond will then utilize a weir discharge, calculated to be 2.18cfs, through a sidewalk culvert discharging to 57th Street where existing curb inlets will catch the flow.

DESCRIPTION	EXISTING CONDITIONS				FLOW (cfs)	VOL (ac ft)
	Areas (ac)	A	B	C		
Basin A-2	2.24	0	0	100	6.30	.180

DESCRIPTION	DEVELOPED CONDITIONS				FLOW (cfs)	VOL (ac ft)
	Areas (ac)	A	B	D		
Basin A-2	2.24	0	0	60	7.56	.251



Dekker/Perich/Sabatini
 architecture • interiors • landscape • planning • engineering
 7601 Jefferson N.E., Suite 100 Albuquerque, NM 87109 505 781-6700 Fax 781-4222

CITY OF ALBUQUERQUE CAPITAL IMPLEMENTATION PROGRAM

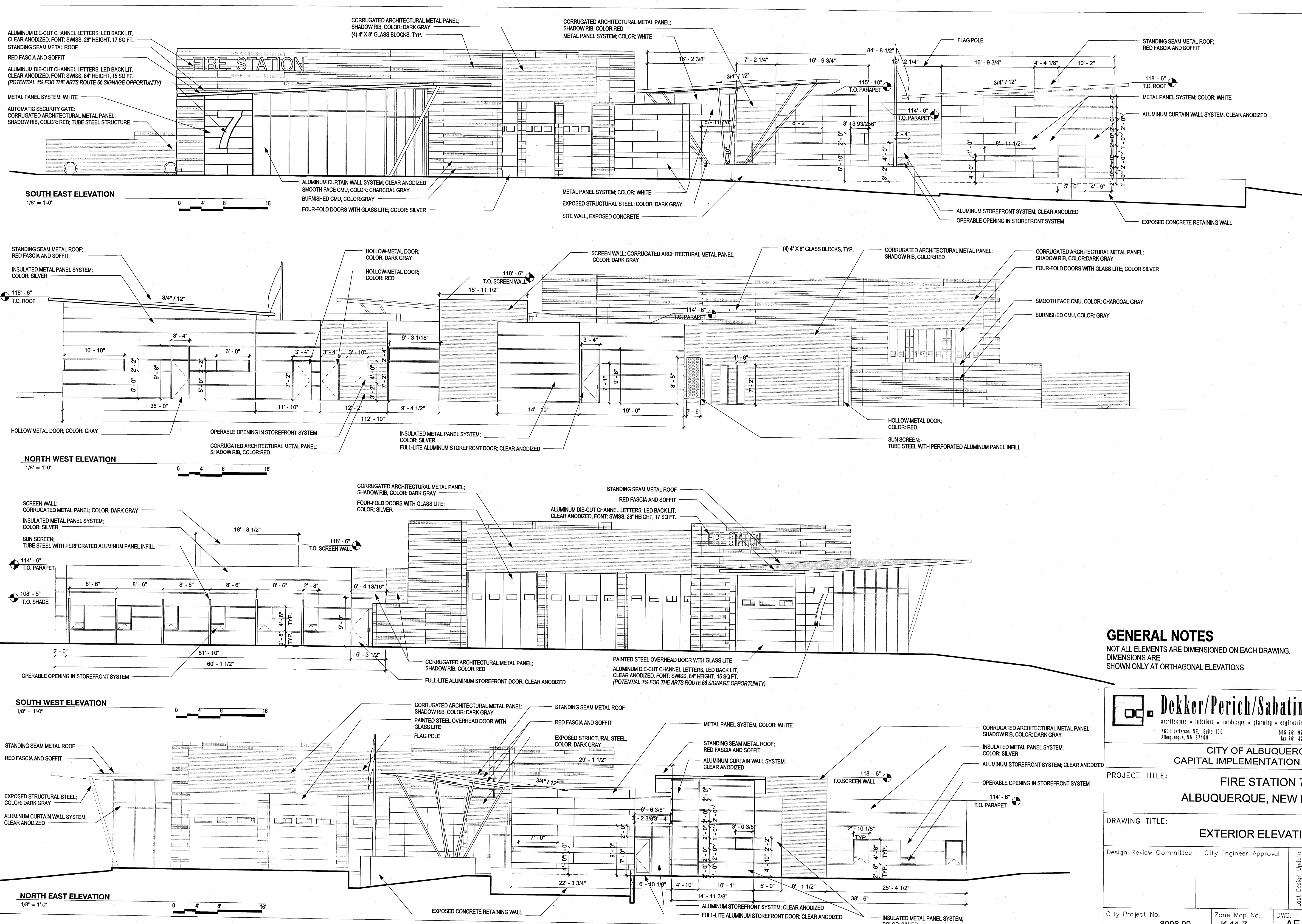
PROJECT TITLE: **FIRE STATION 7 ALBUQUERQUE, NEW MEXICO**

DRAWING TITLE: **GRADING AND DRAINAGE**

Design Review Committee	City Engineer Approval	Mo./Day/Yr.	Mo./Day/Yr.
City Project No. 8006.91	Zone Map No. K-11	DWG. C-101	Sheet 7 Of 13

SURVEY INFORMATION		FIELD NOTES		SEAL	
NO.	BY	NO.	BY	NO.	BY
AS BUILT INFORMATION		BENCH MARKS		REVISIONS	
CONTRACTOR	NEW MEXICO STATE PLANE COORDINATES	DATE	DATE	NO.	DATE
STARTED BY	NAD 83 - NAVD 88, CENTRAL ZONE	DATE	DATE	NO.	DATE
ACCEPTANCE BY	CAP: NM_448_C1	DATE	DATE	NO.	DATE
FIELD PLOTTING BY	N=1485337.932, E=1505010.213, EL=5076.696	DATE	DATE	NO.	DATE
DRAWINGS CORRECTED BY	GROUND TO GRID CONVERSION: 0.99982094	DATE	DATE	NO.	DATE
MICRO-FILM INFORMATION	CAP: 5_K10	DATE	DATE	NO.	DATE
RECORDED BY	N=1484747.997, E=1502587.549, EL=5086.432	DATE	DATE	NO.	DATE
NO.	GROUND TO GRID CONVERSION: 0.99981913	DATE	DATE	NO.	DATE

12/14/40441791
1/18/12
CDP-101



GENERAL NOTES
 NOT ALL ELEMENTS ARE DIMENSIONED ON EACH DRAWING.
 DIMENSIONS ARE SHOWN ONLY AT ORTHOGONAL ELEVATIONS

Dekker/Perich/Sabatini
 architecture • interiors • landscape • planning • engineering
 7801 Jefferson NE, Suite 100 Albuquerque, NM 87109 505 761-3700 fax 761-4222

CITY OF ALBUQUERQUE
CAPITAL IMPLEMENTATION PROGRAM

PROJECT TITLE: FIRE STATION 7
 ALBUQUERQUE, NEW MEXICO

DRAWING TITLE: EXTERIOR ELEVATIONS

Design Review Committee	City Engineer Approval	Mo./Day/Yr.	Mo./Day/Yr.

City Project No. **8006.00** Zone Map No. **K-11-Z** DWG. **AE-201** Sheet **8** Of **13**

SURVEY INFORMATION		FIELD NOTES		AS BUILT INFORMATION	
NO.	BY	NO.	DATE	CONTRACTOR	DATE
				INSPECTOR'S	DATE
				FIELD	DATE
				VERIFICATION BY	DATE
				CONTRACTED BY	DATE
				MICRO-FILM INFORMATION	DATE
				RECORDED BY	DATE
					NO.

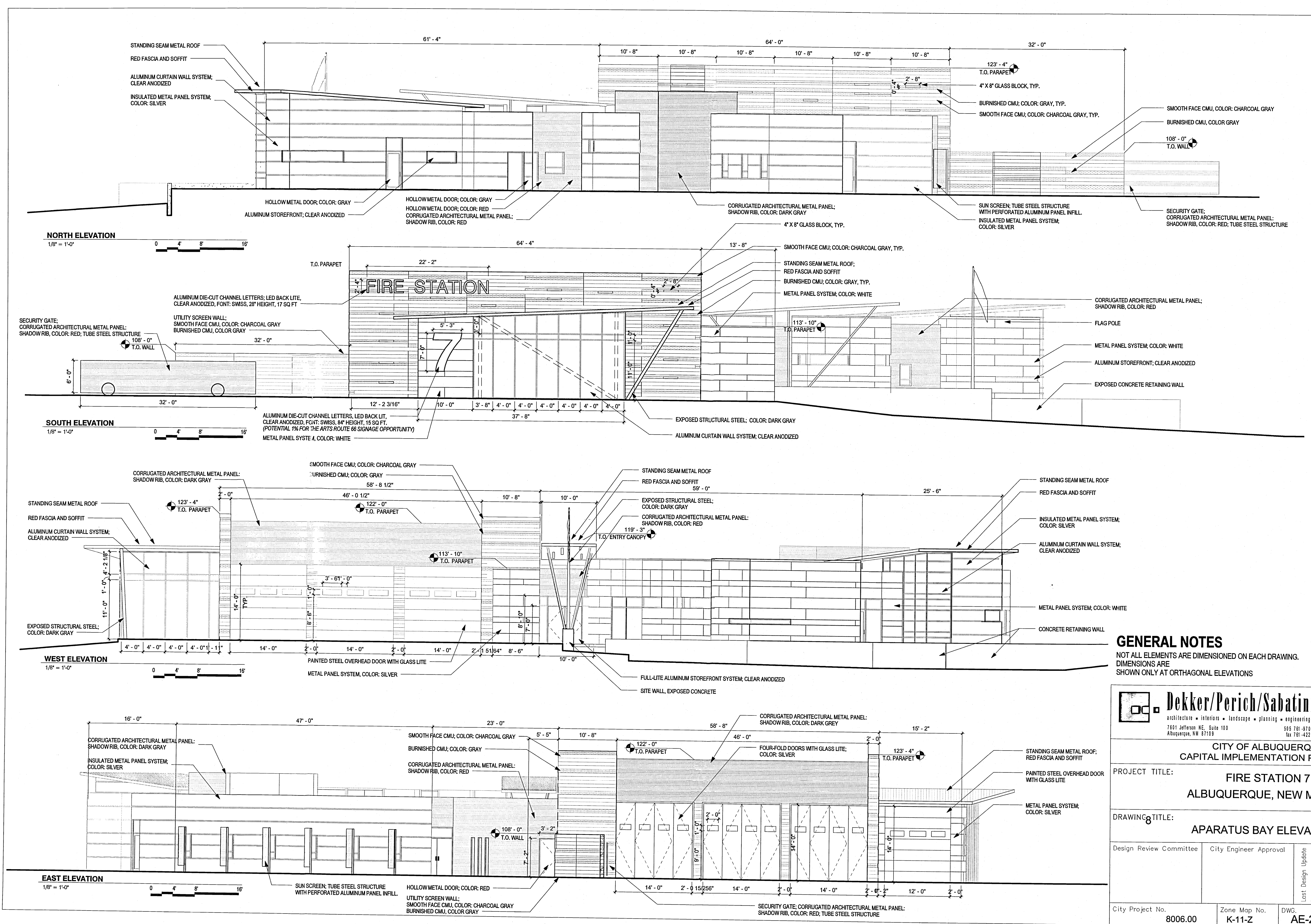
NO.	DATE	DPS	BY
1	06/28/11		

REVISIONS

NO.	DATE	REVISIONS
		DESIGN

DESIGNED BY **BPG/SHL** DATE **MAY 24, 2011**
 DRAWN BY **BPG** DATE **MAY 24, 2011**
 CHECKED BY **SHL** DATE **MAY 24, 2011**

11-0016-7-6-10/22/11 1:214-60441791



GENERAL NOTES
 NOT ALL ELEMENTS ARE DIMENSIONED ON EACH DRAWING.
 DIMENSIONS ARE SHOWN ONLY AT ORTHOGONAL ELEVATIONS

Dekker/Perich/Sabatini
 architecture • interiors • landscape • planning • engineering
 7601 Jefferson NE, Suite 100
 Albuquerque, NM 87109
 505 761-9700
 fax 761-4222

CITY OF ALBUQUERQUE
CAPITAL IMPLEMENTATION PROGRAM
 PROJECT TITLE: **FIRE STATION 7**
ALBUQUERQUE, NEW MEXICO

DRAWING TITLE: **APARATUS BAY ELEVATIONS**

Design Review Committee	City Engineer Approval	Mo./Day/Yr.	Mo./Day/Yr.

City Project No. **8006.00** Zone Map No. **K-11-Z** DWG. **AE-202** Sheet **9** of **13**

AS BUILT INFORMATION	
CONTRACTOR	DATE
WORK	DATE
INSPECTED BY	DATE
ACCEPTANCE BY	DATE
VERIFICATION BY	DATE
DRAWINGS	DATE
SUBMITTED BY	DATE
MICRO-FILM INFORMATION	
RECORDED BY	DATE
NO.	

BENCH MARKS	

SURVEY INFORMATION	
NO.	DATE

FIELD NOTES	

SEAL	

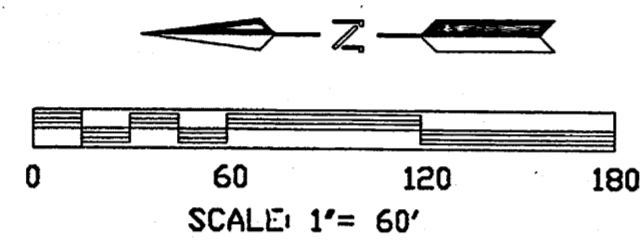
REVISIONS	
NO.	DATE
1	06/28/11

DESIGNED BY	BPG, SHL	DATE	MAY 24, 2011
DRAWN BY	BPG	DATE	MAY 24, 2011
CHECKED BY	SHL	DATE	MAY 24, 2011

11-0016-7-01-W-22/11 1:214.40441791



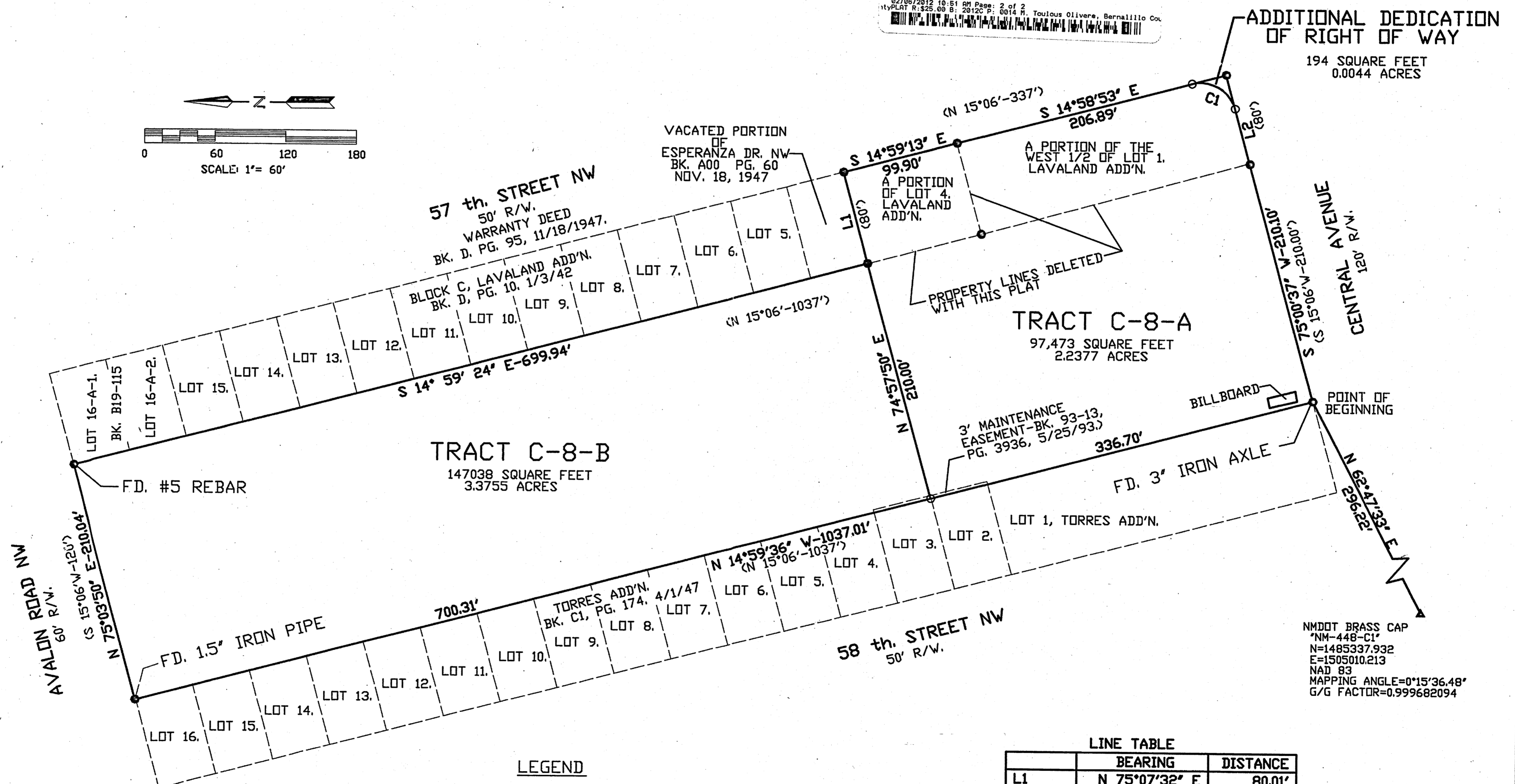
VICINITY MAP
ZONE ATLAS MAP K-11
N.T.S.



PLAT OF
TRACTS C-8-A & C-8-B
TOWN OF ATRISCO, AIRPORT UNIT
WITHIN
PROJECTED SECTION 23, T10N, R2E, NMPM
TOWN OF ATRISCO GRANT, CITY OF ALBUQUERQUE
BERNALILLO COUNTY, NEW MEXICO
JUNE 2011

DOCH 2012011677
02/06/2012 10:51 AM Page: 2 of 2
PLAT R: \$25.00 B: 20120 P: 0014 R: Toulous Oliveira, Bernalillo Co.

ADDITIONAL DEDICATION
OF RIGHT OF WAY
194 SQUARE FEET
0.0044 ACRES



PROPERTY LINES DELETED
WITH THIS PLAT

NMDOT BRASS CAP
"NM-448-C1"
N=1485337.932
E=1505010.213
NAD 83
MAPPING ANGLE=0°15'36.48"
G/G FACTOR=0.999682094

- LEGEND**
- FD. STEEL BATHEY MARKER STAMPED " CARTESIAN SURVEYS- LS 14271" OR AS NOTED.
 - SET NO. 5 REBAR WITH CAP STAMPED "PS 7924".

LINE TABLE

	BEARING	DISTANCE
L1	N 75°07'32" E	80.01'
L2	S 75°06'15" W	49.81'

CURVE TABLE

	ARC	DELTA	RADIUS	TANGENT	CH. BRG.	CH. DIST.
C1	47.17	90°05'08"	30.00'	30.04'	S30°03'41"W	42.46'

SJR & ASSOC Santiago Romero Jr.
and Associates, Inc.
ENGINEERS SURVEYORS
8708 BRANDYWINE RD. N.E.,
ALBUQUERQUE, NEW MEXICO 87111
(505)400-3845

110103B.DWG