

Easement Notes

- 1 PROPOSED 30 FOOT PRIVATE ACCESS AND UTILITY EASEMENT.
- 2 EXISTING 200' PNM EASEMENT (8/10/56, BK 359, PG 275-279)
- 3 EXISTING 60' DRAINAGE EASEMENT (11/11/75, B10-156)

Legal Description

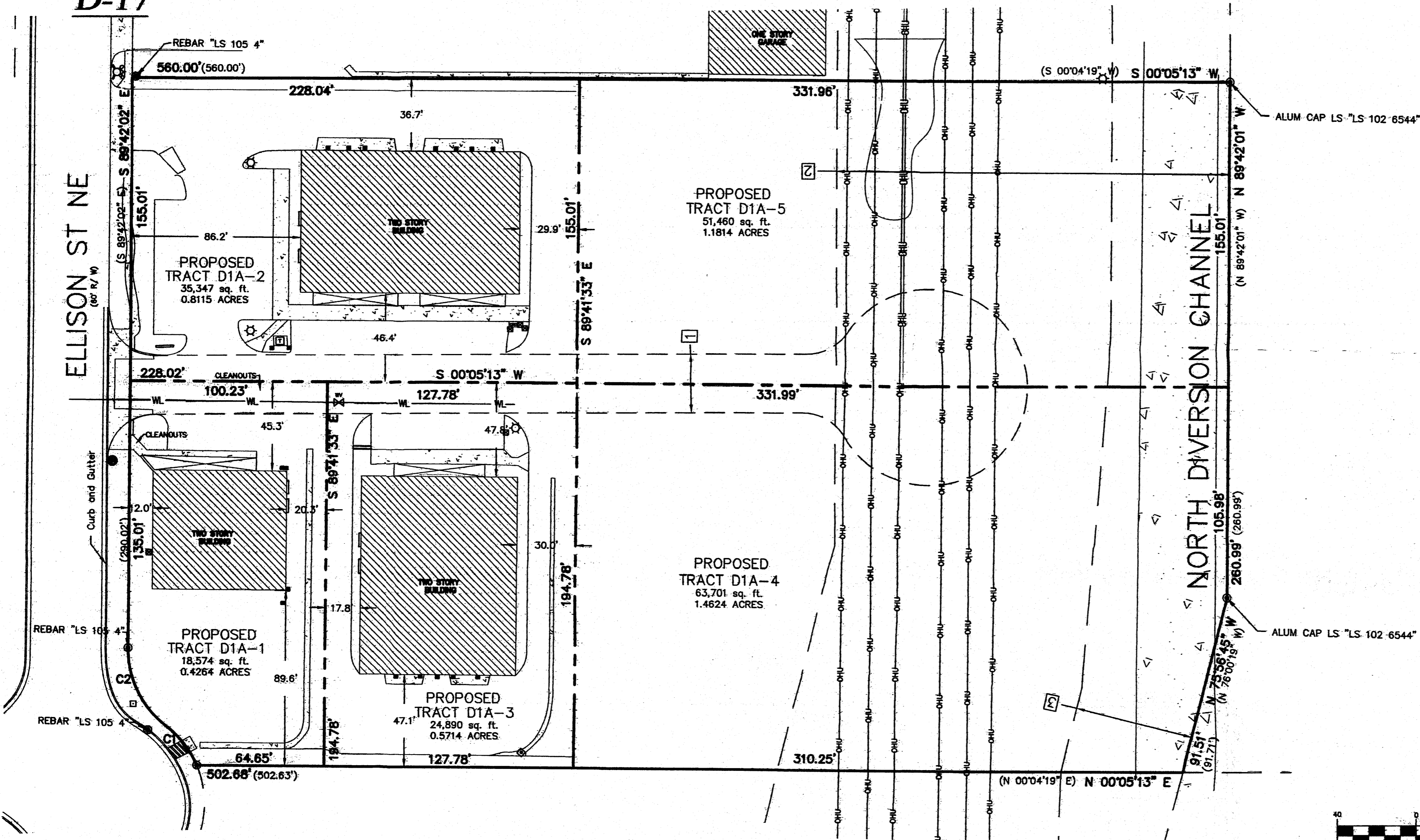
TRACT D-1-A, INTERSTATE INDUSTRIAL TRACT, AS THE SAME IS SHOWN AND DESIGNATED ON THE PLAT THEREOF, FILED IN THE OFFICE OF THE COUNTY CLERK OF BERNALILLO COUNTY, NEW MEXICO ON NOVEMBER 1, 1988 IN PLAT BOOK C37, PAGE 166.

Sketch Plat Tracts D1A-1, D1A-2 D1A-3, D1A-4 and D1A-5 Interstate Industrial Tract

City of Albuquerque
Bernalillo County, New Mexico

May 2011

D-17



Legend

(N 90°00'00" E)	RECORD BEARINGS AND DISTANCES PER PLAT OF RECORD (95C-126)
N 90°00'00" E	MEASURED BEARING AND DISTANCES
○	FOUND AS INDICATED
⊗	WATER VALVE
⊙	WATER METER
⊠	IRRIGATION BOX
⊞	TRANSFORMER
⊞	COVERED AREA
⊞	FIRE HYDRANT
—OHU—	OVERHEAD UTILITY LINES

Notes

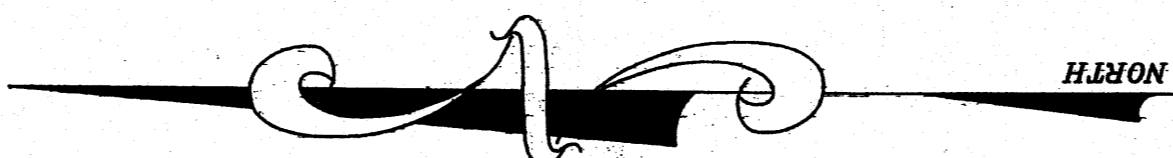
1. PROPOSED LOT LINES SHOWN AS THUS ————

GRAPHIC SCALE



(IN FEET)
1 inch = 40 ft.

CURVE TABLE					
CURVE	LENGTH	RADIUS	DELTA	CHORD	BEARING
C1	25.43' (L=25.67)	50.00 (R=50.00)	29°08'36"	25.16'	N51°51'28"E
C2	46.26' (L=46.26)	50.00 (R=50.00)	53°00'48"	44.63'	S63°47'34"W



CARTESIAN SURVEYS

P.O. BOX 44414 RIO RANCHO, N.M. 87174
Phone (505) 896-3050 Fax (505)891-0244