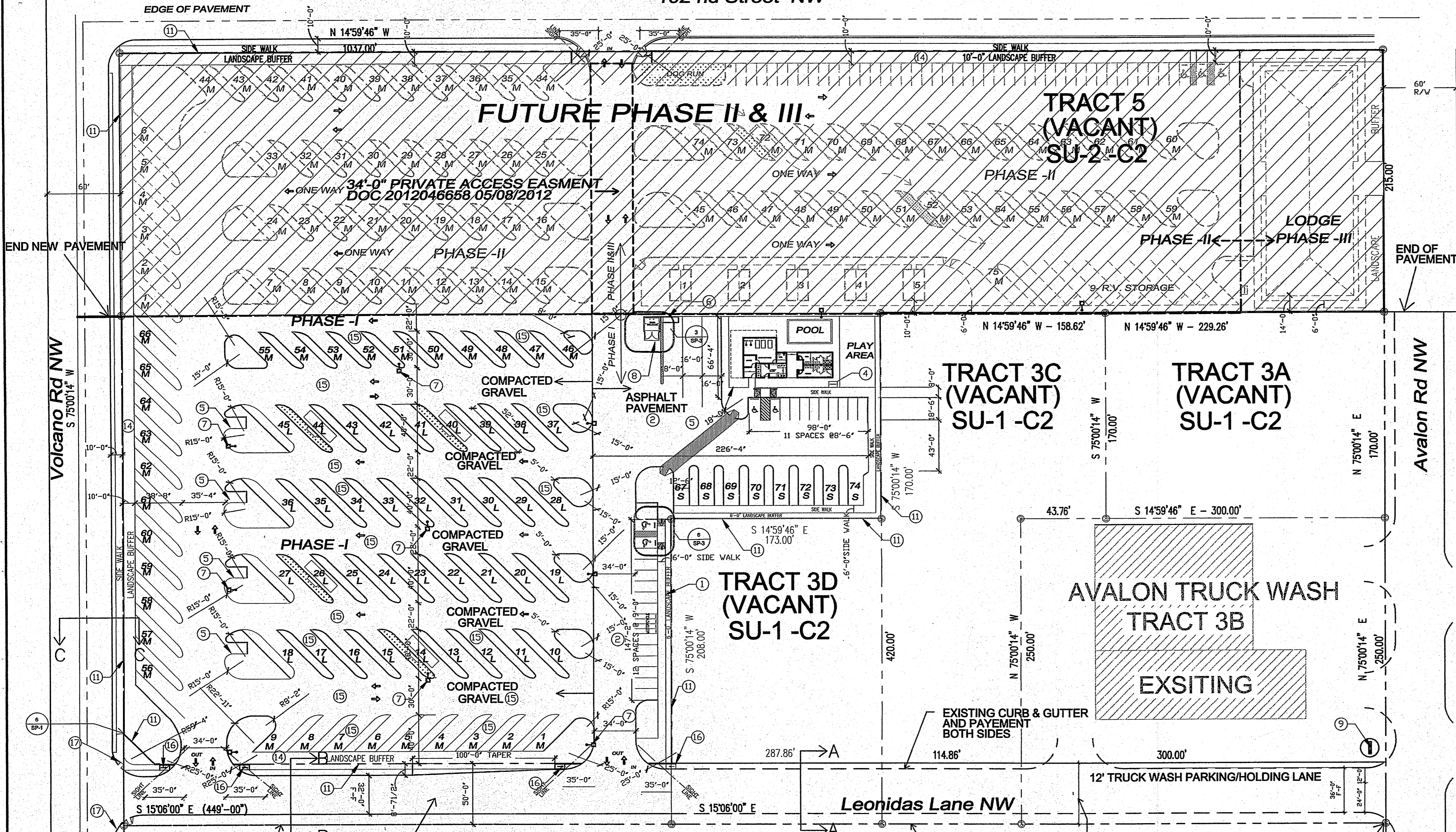


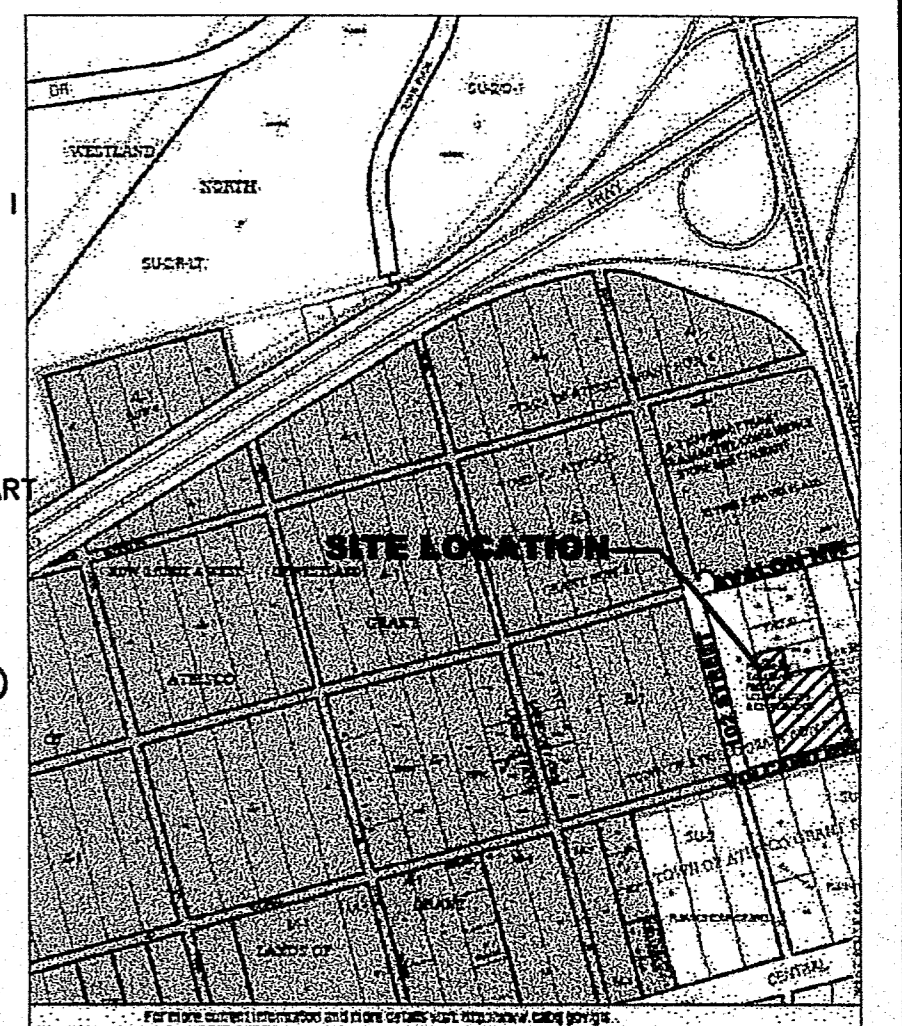
TRACT 6 (VACANT) ZONED A-1

102 nd Street NW



KEYED NOTES

1. CONCRETE CURB - SEE DETAIL 2/SP-02 PART OF PHASE I CONSTRUCTION.
2. ASPHALT PAVING PART OF PHASE I CONSTRUCTION.
3. ADA PARKING SEE 6/A-02 PART OF PHASE I CONSTRUCTION.
4. BIKE RACK FOR 4 BIKES - SEE DETAIL 1/SP-02 PART OF PHASE I CONSTRUCTION.
5. PARKING SPACE.
6. RECYCLE PAD 5'-0"x15'-0", FENCED PART OF PHASE I CONSTRUCTION.
7. PARKING LOT LIGHTING - SEE DETAIL 4/SP-02 PART OF PHASE I CONSTRUCTION.
8. TRASH ENCLOSURE - SEE DETAIL 3/SP-02 PART OF PHASE I CONSTRUCTION.
9. EXISTING PYLON SIGN TO BE MODIFIED - SEE DETAIL 9/SP-02 PART OF PHASE I CONSTRUCTION.
10. PERMANENT FOUNDATION REF. TO 3/SP-01 & 4/A-01 FOR ELEV.
11. 12" 8" CMU FENCE WALL 6'-0" TALL SEE DETAIL 12/SP-02
12. NOT USED
13. CONCRETE CURB.
14. 10 FEET LANDSCAPE BUFFER AND PUBLIC UTILITY EASEMENT (PUE)
15. COMPACTED GRAVEL BASE
16. BUILD UNIDIRECTIONAL WHEEL CHAIR RAMP PER COA DWG 2426 WITH TRUNCATED DOMES.
17. BUILD WHEEL CHAIR RAMP PER COA DWG (2426, 2440 & 2441 CASE I) OFFSET TYPE WITH TRUNCATED DOMES.



LOCATION MAP
ZONE ATLAS: K-8-Z

DPM STANDARD NOTE:

1. ALL PUBLIC INFRASTRUCTURE CONSTRUCTED WITHIN PUBLIC RIGHT OF WAY OR PUBLIC EASEMENTS SHALL BE TO CITY STANDARDS. THOSE STANDARDS WILL INCLUDE BUT NOT LIMITED TO SIDEWALKS (STD. DWG. 2430), DRIVEWAYS (STD. DWG. 2425), PRIVATE ENTRANCES (STD. DWG. 2426) AND WHEEL CHAIR RAMP (STD. DWG. 2441).
2. THE EXISTING POND LOCATED ON TRACT 3E SHALL BE VACATED ONLY AFTER THE COMPLETION OF LEONIDAS LANE AND THE STORM DRAIN REQUIRED TO ACCOMMODATE THE FLOWS GENERATED FROM TRACTS 3A, 3B, 3C AND 3D INTO THE EXISTING CITY OF ALBUQUERQUE POND AS SHOWN ON SHEET CO-1 OF THE GRADING & DRAINAGE PLAN.
3. ALL ROADWAY IMPROVEMENTS INCLUDING LEONIDAS LANE, TO BE BUILT WITH WORK ORDER.

PHASE I

1. CLUB HOUSE & POOL
 2. (52'-0") LARGE RV SPACES (L) = 36
 3. (38'-6") MEDIUM RV SPACES (M) = 30
 4. (30'-0") SMALL RV SPACES (S) = 8
- TOTAL = 74
- GROSS BUILDING AREA CLUB HOUSE = 1500 SF
- PARKING TABULATION**
- CAR PARKING SPACES = 29 TOTAL
 ADA PARKING SPACES = 4
 MOTOR CYCLE SPACES = 4
 BIKE RACK = 4 BIKES

PROJECT NUMBER: _____
 APPLICATION NUMBER: _____

THIS PLAN IS CONSISTENT WITH THE SPECIFIC SITE DEVELOPMENT PLAN APPROVED BY THE ENVIRONMENTAL PLANNING COMMISSION (EPC), DATED _____ AND THE FINDINGS AND CONDITIONS IN THE OFFICIAL NOTIFICATION OF DECISION ARE SATISFIED.

IS AN INFRASTRUCTURE LIST REQUIRED? () YES () NO. IF YES, THEN A SET OF APPROVED DRG PLANS WITH A WORK ORDER IS REQUIRED FOR ANY CONSTRUCTION WITHIN PUBLIC RIGHT-OF-WAY OR FOR CONSTRUCTION OF PUBLIC IMPROVEMENTS.

TRAFFIC ENGINEER, TRANSPORTATION DIVISION	DATE
<i>Alfonso Pineda</i>	06-13-12
WATER UTILITY DEPARTMENT	DATE
<i>Camel S. Dumont</i>	06-13-12
PARKS AND RECREATION DEPARTMENT	DATE
CITY ENGINEER	DATE
ENVIRONMENTAL HEALTH DEPARTMENT (CONDITIONAL)	DATE
SOLID WASTE MANAGEMENT	DATE
DRB CHAIRPERSON, PLANNING DEPARTMENT	DATE

NOTE: MAINTENANCE OF PUBLIC OPEN SPACE AMENITIES SHALL BE THE RESPONSIBILITY OF THE OWNER.

NOTE: SITE LIGHTING TO COMPLY WITH AREA LIGHTING REGULATIONS 14-16-3-9- OF THE ZONING CODE.

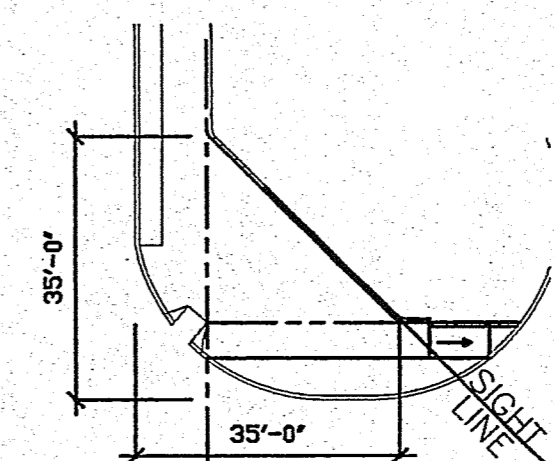
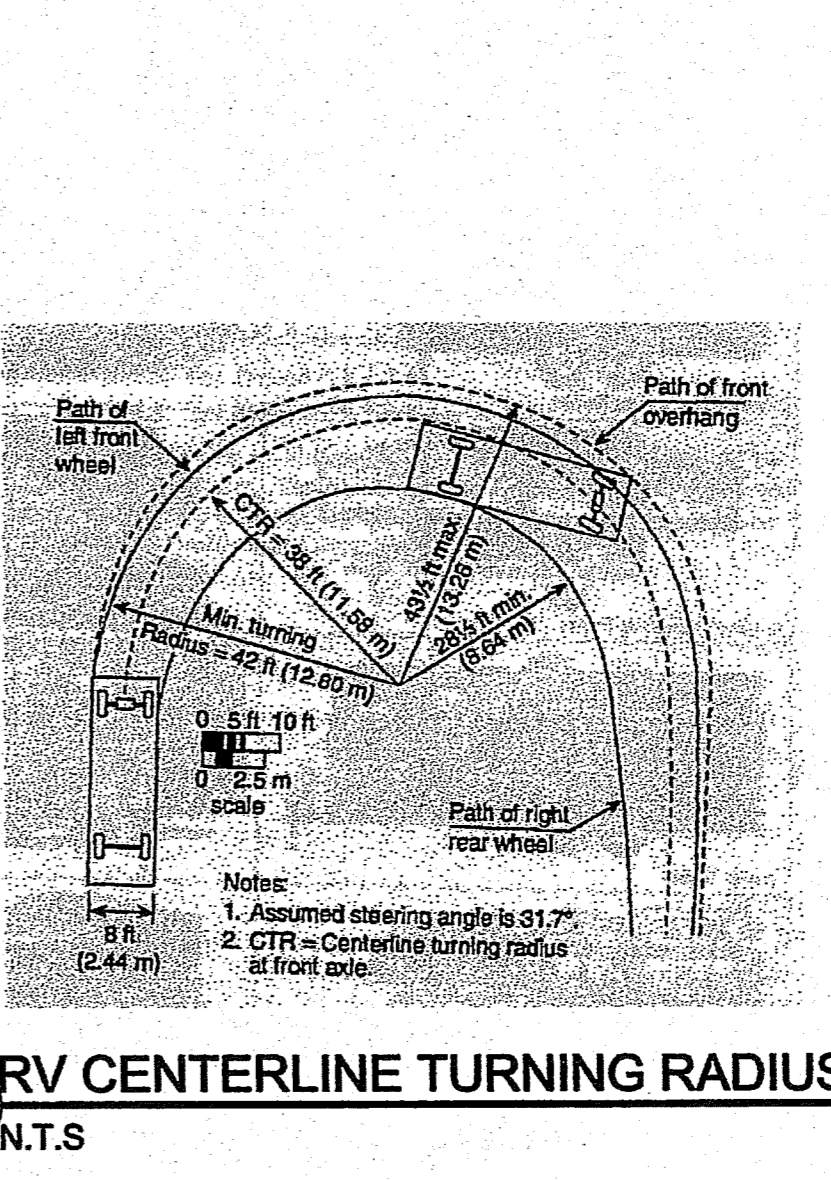
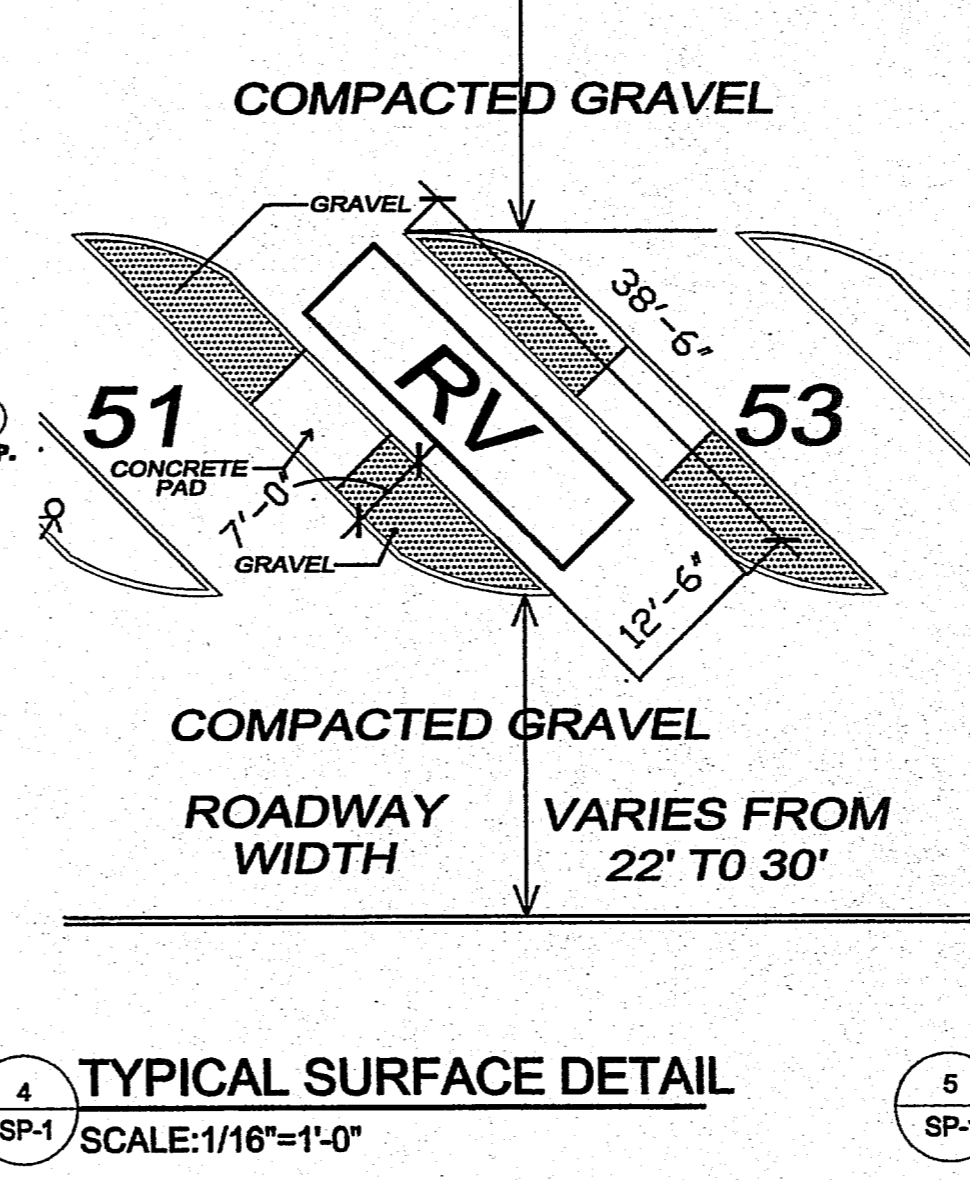
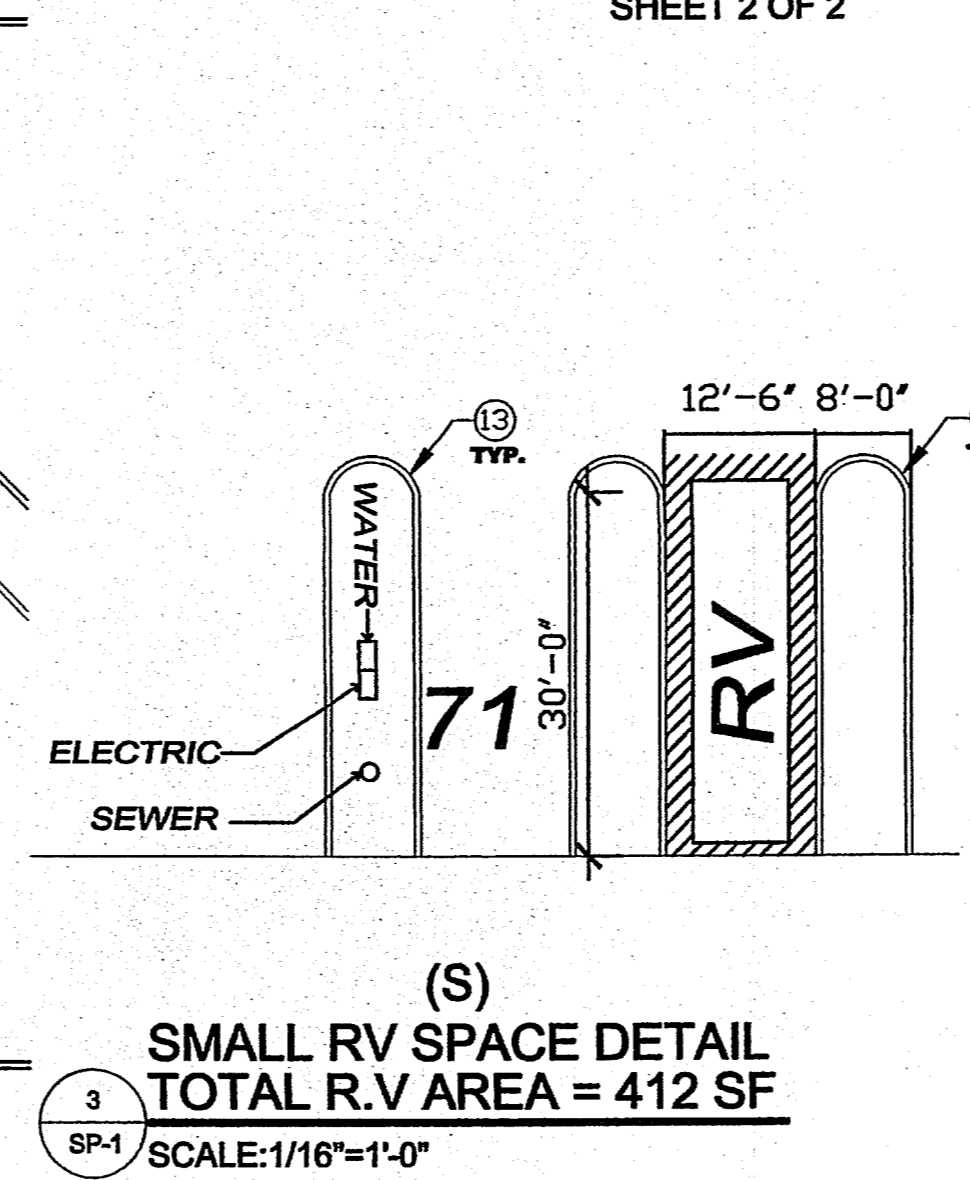
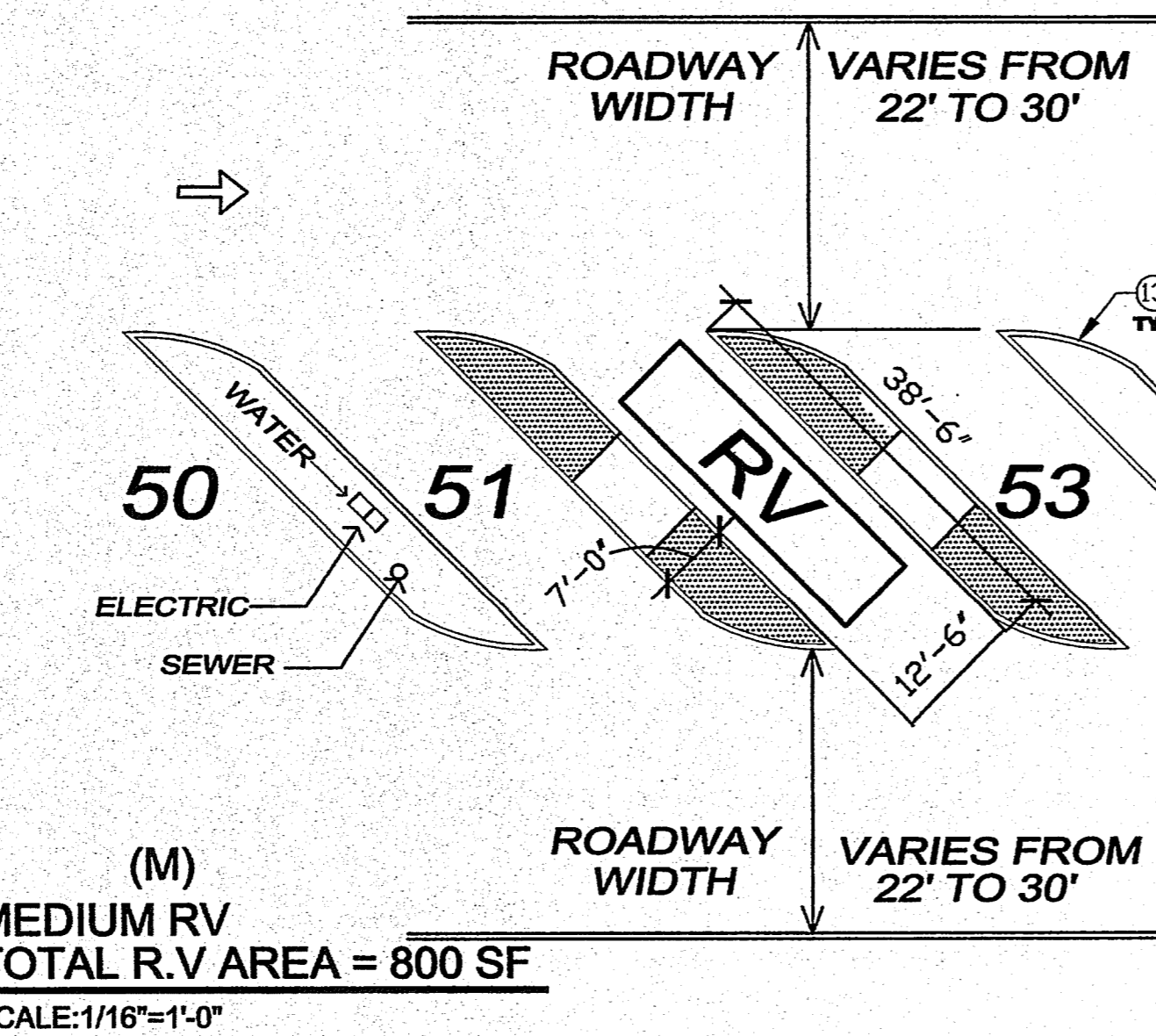
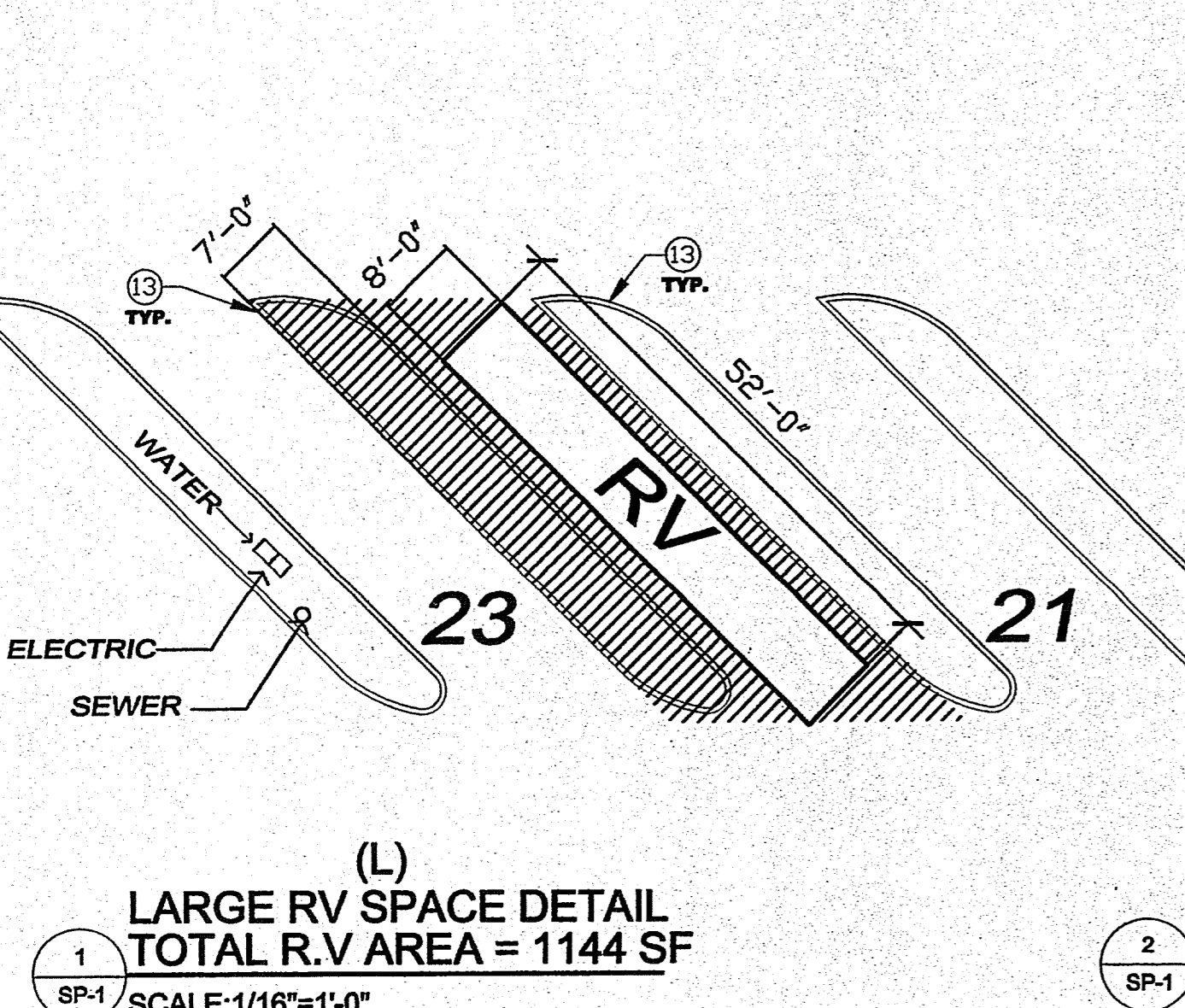
SITE DEVELOPMENT PLAN FOR BUILDING PERMIT

Afra Construction & Design
 2501 Yale Blvd, Suite 102
 Albuquerque, New Mexico 87106
 Tel 505.242.1745
 Fax 505.242-1737

Paradise RV Park
 Avalon Rd/ Leonidas Ln, NW
 Albuquerque, NM 87120

REV	DATE	DESCRIPTION	APVD
1			
2			
3			
4			

SP-1
06.13.2012



6 SIGHT TRIANGLE DIAGRAM
NTS.

RECORDED ON 10/01/1998
 DOC # 1998126535
 BOOK 98c, PAGE -291
 SHEET 2 OF 2

ROADWAY WIDTH VARIES FROM 22' TO 30'

ROADWAY WIDTH VARIES FROM 22' TO 30'

ROADWAY WIDTH VARIES FROM 22' TO 30'