

### INTERSTATE HIGHWAY 25

NMDOT Project No. AC-MP-(04)-(THU)-025-4(78)227  
Filed 11-25-2008, Bk. 20082, Pg. 187

#### LEGEND

- ASPHALT PAVING
- NEW CONCRETE SIDEWALK
- NEW HANDICAMP RAMP PER CITY OF ALBUQUERQUE STANDARDS
- SITE LIGHT FIXTURE

### LEGAL DESCRIPTION

TRACT 1  
8.2172 ACRE  
(VACANT LAND)  
BIG I COMMERCE CENTER  
FILED 6-13-2013, BK. 2013C, PG 74  
ZONING: M-1

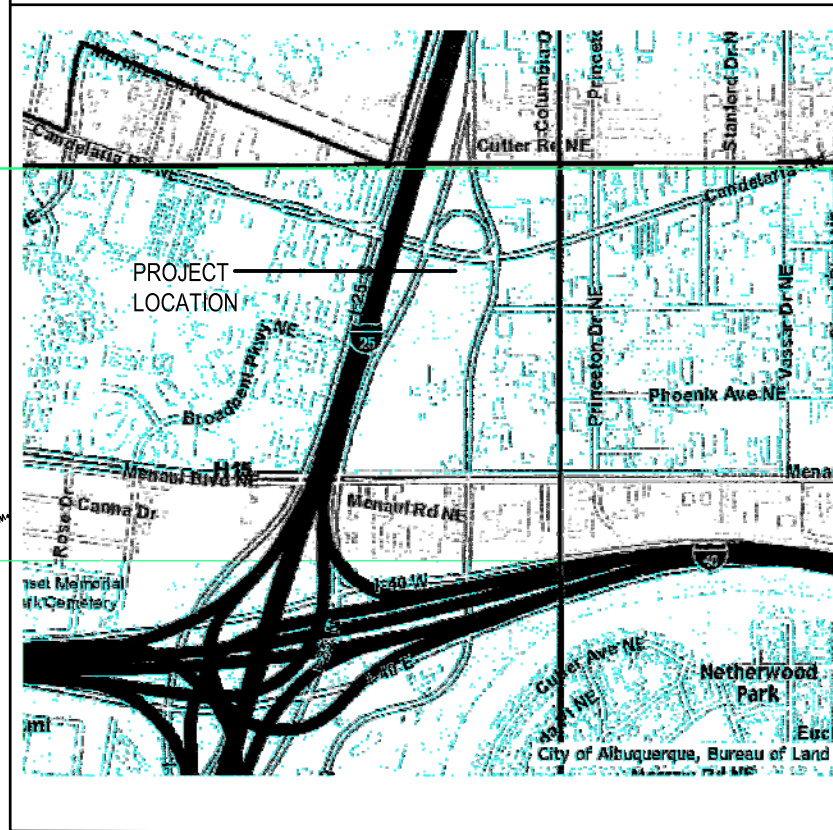
### PARKING/SIGNAGE CALCULATIONS

NEW & USED CAR SALES (RETAIL A-27)	12,943 SF	1 SPACE / 200 SF =	64.7#5 SPACES
SERVICE & PARTS (MANUF. & WHOLESALE A-17)	28,556 SF	1 SPACE / 1,000 SF =	28.6#29 SPACES
TOTAL PARKING SPACES	91 SPACES	PER GMFI STANDARDS TO BE PROVIDED BY GM'S DESIGNATED VENDOR, AGI	
TRANSIT REDUCTION 10% (ROUTE 7 ON CANDELARIA)	91 / 9 = 82 SPACES		
MOTORCYCLE PARKING REQUIRED	51-100 = 3 SPACES		
BICYCLE PARKING REQUIRED	5 SPACES		
HANDICAPPED PARKING REQUIRED	51-100 = 4 H.C. SPACES		
<b>PARKING SUMMARY</b>			
CAR SPACES	91	REQUIRED	PROVIDED
MC SPACES	3		111 + SERVICE BAYS
BICYCLE SPACES	5		4
DISABLED (H.C.)	4		4

### AREA SCHEDULE

MARK	AREA	% OF TTL
STRUCTURE	41,350 S.F.	10%
OPEN AREA @ STRUCTURE	3,194 S.F.	< 2%
PARKING	116,020 S.F.	29%
CIRCULATION	97,686 S.F.	24%
LANDSCAPING	139,010 S.F. ALLOWABLE	35%
TOTAL AREA	401,501 S.F. (9,2172 ACRES)	

### VICINITY MAP

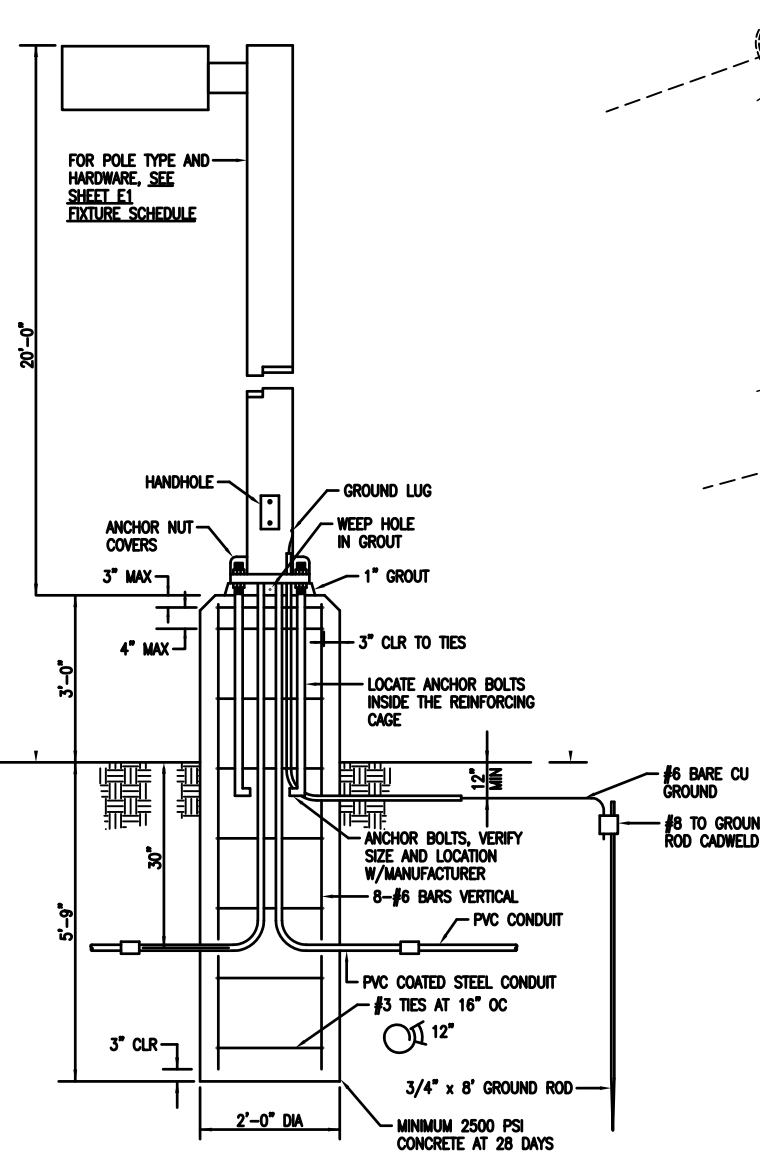


**P137**

**TYPICAL STREET SIGN**

SCALE: 1/4" = 1'-0"

- SIGNAGE NOTES:**
- 26'-0" TALL
  - 127 SQUARE FEET
  - INTERIOR LED LIGHTING
  - CHEVROLET BLUE ACRYLIC FACE
  - STEEL SUPPORT POSTS, PAINT GLOSS BLACK



### A1 SITE PLAN

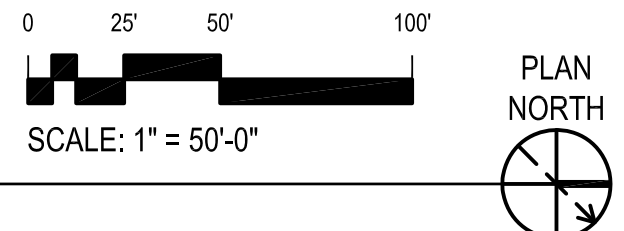
SCALE: A2



**A3 TYP. H.C. PARKING SIGN**

SCALE: NTS

NOTE: A PAINTED "NO PARKING" SIGN IS PROVIDED AT THE REAR OF EACH ACCESS AISLE. LETTERS TO BE 12" HIGH & 2" MIN. WIDE, PER COA STANDARDS, (66-14.1.B NMSA 1978, 66-7-352.4C NMSA 1978)



# GALLES CHEVROLET ALBUQUERQUE, NEW MEXICO

JAYNES CORPORATION



DRB APPROVAL  
SUBMITTAL

SITE PLAN

project no. 16-013

PROJECT NUMBER:  
Application Number:

This Plan is consistent with the specific Site Development Plan approved by the Environmental Planning Commission (EPC), dated and the Findings and Conditions in the Official Notification of Decision are satisfied.

Is an Infrastructure List required? ( ) Yes ( ) No If yes, then a set of approved DRC plans with a work order is required for any construction within Public Right-of-Way or for construction of public improvements.

DRB SITE DEVELOPMENT PLAN SIGNOFF APPROVAL:

Department	Date
Traffic Engineering, Transportation Division	
ABCWUA	
Parks and Recreation Department	
City Engineer	
Solid Waste Management	
DRB Chairperson, Planning Department	

date: NOVEMBER 29, 2016
drawn by: V&A
checked by: RRV
file name: XXXXX_AXXX.dwg
revisions:
REVISED OCTOBER 26, 2016

SPBP\_001