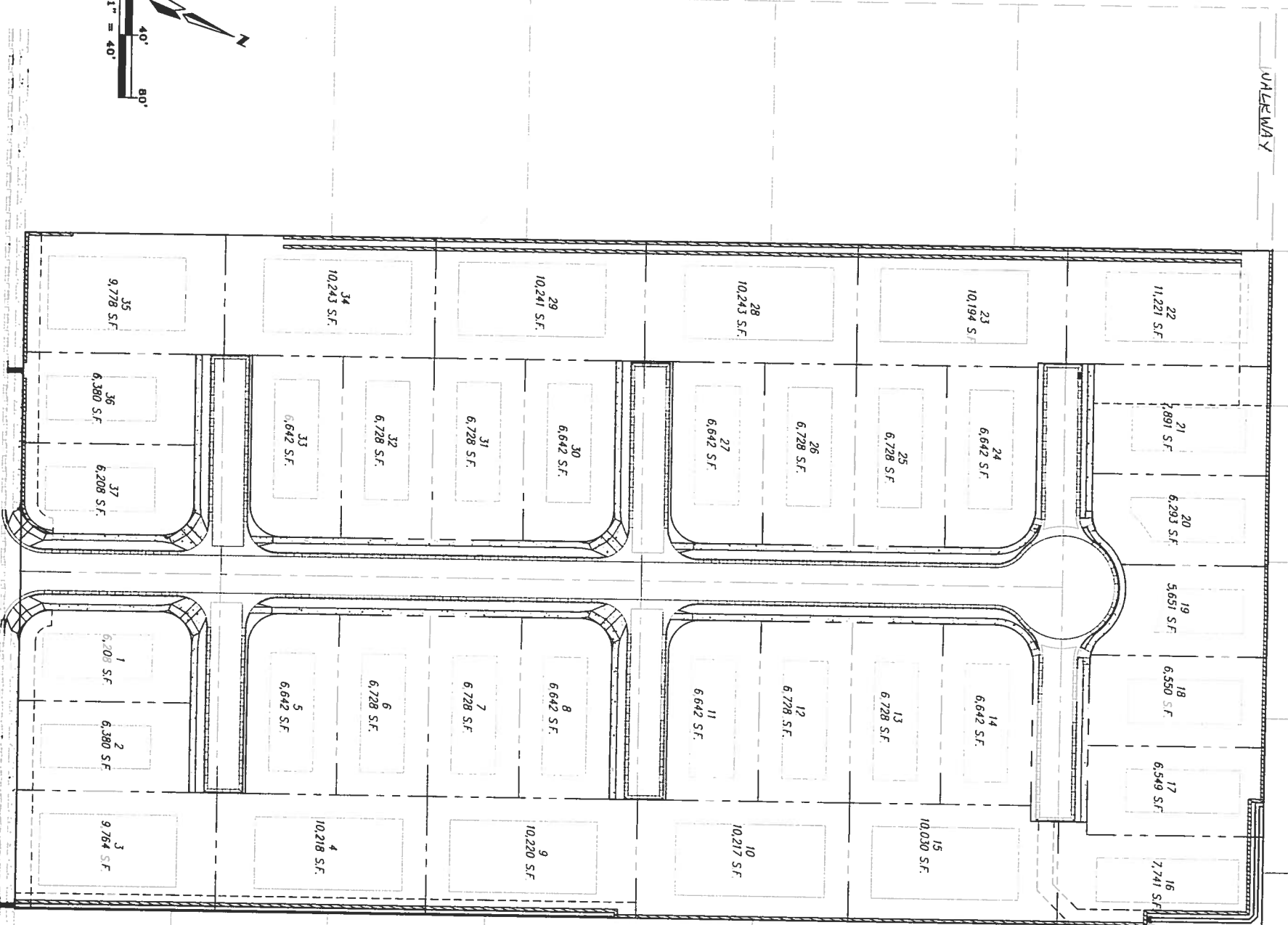


SKETCH PLAT
TIBURON HEIGHTS
 WITHIN THE
 CITY OF ALBUQUERQUE
 BERNALILLO COUNTY, NEW MEXICO
 OCTOBER, 2012

DESCRIPTION
 A tract being all of LOT 31, BLOCK 8, VOLCANO CARRS UNIT 18 as the same is shown and described on said plat and filed in the office of the County Clerk of Bernalillo County, New Mexico on and containing 7,879 square more or less.

SUBDIVISION DATA
 GROSS ACRES 7.9489 AC
 ZONE ATLAS NO. D-10-2
 LOTS CREATED 37 LOTS
 DATE OF SURVEY MARCH 2012



SURVEYOR
 PRECISION SURVEYS, INC.
 P.O. BOX 90606
 ALBUQUERQUE, N.M. 87199
 (505) 442-8011

OWNERS
 RTR, LLC
 PO BOX 27580
 ALBUQUERQUE, N.M. 87125
 (505) 248-1888

ENGINEERS
 D. MARK GOODWIN & ASSOCIATES, P.A.
 CONSULTING ENGINEERS
 P.O. BOX 90606
 ALBUQUERQUE, NEW MEXICO 87199
 (505) 828-2200

TIBURON HEIGHTS			
SKETCH PLAT			
MARK GOODWIN & ASSOCIATES, P.A. CONSULTING ENGINEERS			
P.O. BOX 90606 ALBUQUERQUE, NEW MEXICO 87199 (505)828-2200, FAX (505)797-9539			
Designed: JM	Drawn: SPS	Checked: DMG	Sheet 1 of 1
Scale: 1" = 40'	Date: 10/8/2012	Job: A12008	