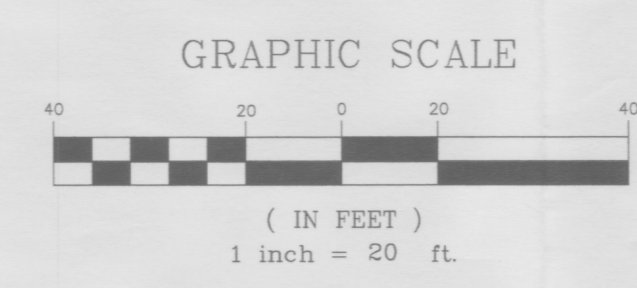
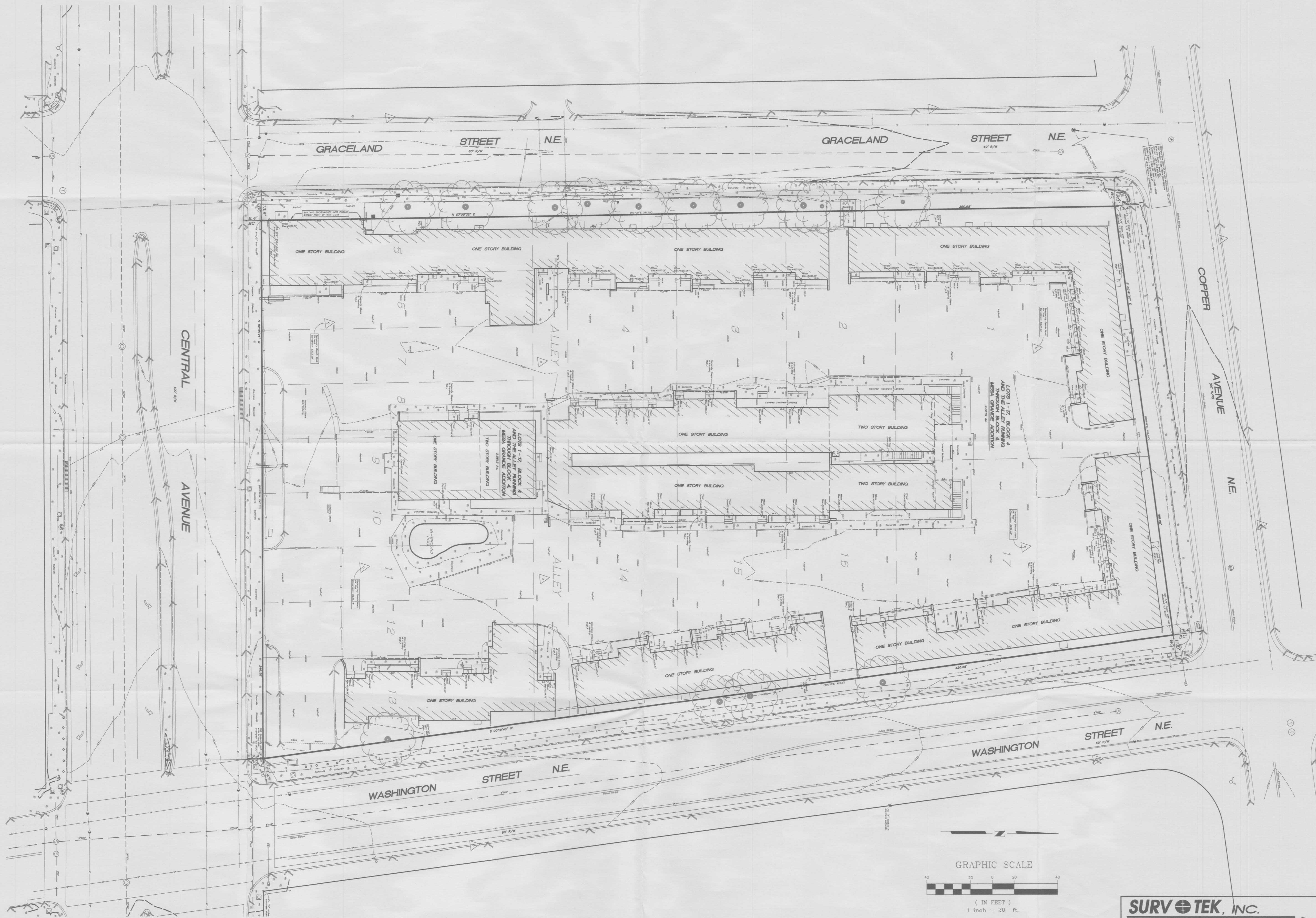


EXISTING SITE CONDITIONS MAP



**SURVOTEK, INC.**  
Consulting Surveyors  
9384 Valley View Drive, N.W. Albuquerque, New Mexico 87114  
Phone: 505-897-3366  
Fax: 505-897-3377

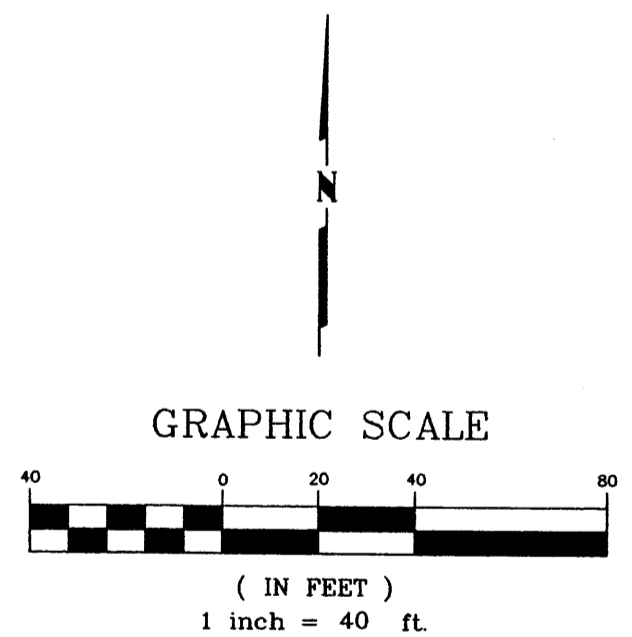
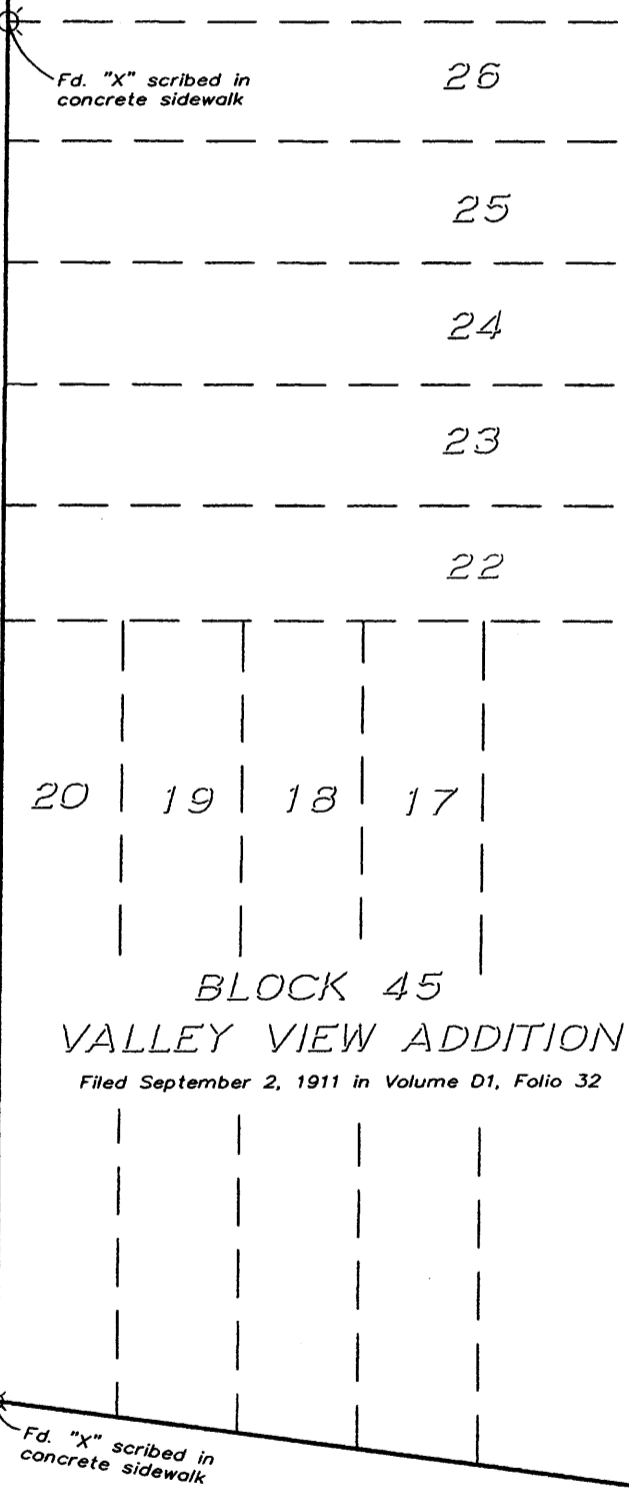


VACATION EXHIBIT

LOTS 1 THROUGH 17, BLOCK 4  
AND THE 16' ALLEY RUNNING THROUGH BLOCK 4  
MESA GRANDE ADDITION

SITUATE WITHIN  
SECTION 23, TOWNSHIP 10 NORTH, RANGE 3 EAST  
NEW MEXICO PRINCIPAL MERIDIAN  
CITY OF ALBUQUERQUE  
BERNALILLO COUNTY, NEW MEXICO  
MAY, 2012

LOT 27-A, BLOCK 45  
VALLEY VIEW ADDITION  
Filed October 15, 2009 in Plat Book 2009C, Page 158



Albuquerque Control Survey Monument "5-K17A"  
New Mexico State Plane Coordinates  
(Central Zone - NAD 83)  
North= 1,484,259.419 feet  
East= 1,535,891.429 feet  
Elevation= 5222.211 feet (NAVD 1988)  
Delta Alpha= -00°12'02.83"  
Ground To Grid Factor= 0.999666619

COPPER AVENUE N.E.  
(60' R/W)

S 89°41'57" E (N89°42'E, 194.46') 198.20'  
Set 5/8" Rebar with cap stamped "LS 9750"  
Set 5/8" Rebar with cap stamped "LS 9750"

All existing interior lot lines to be eliminated by plat.

BLOCK 4  
MESA GRANDE ADDITION  
Filed July 18, 1931 in Volume C2, Folio 27

16' Alley Vacated by  
12DRB-  
0.0847 Ac.

MESA GRANDE ADDITION  
Filed July 18, 1931 in Volume C2, Folio 27

All existing interior lot lines to be eliminated by plat.

N 82°05'21" W 246.38'  
Set Concrete Nail with brass disk stamped "LS 9750"  
Fd. 1-1/2" Iron Pipe  
Fd. 1/2" Rebar and cap stamped "L.S. 8686" (Rejected)

CENTRAL AVENUE N.E.  
(100' R/W)

WASHINGTON STREET N.E.  
60' R/W

GRACELAND STREET N.E.  
60' R/W

BLOCK 3  
MESA GRANDE ADDITION  
Filed July 18, 1931 in Volume C2, Folio 27