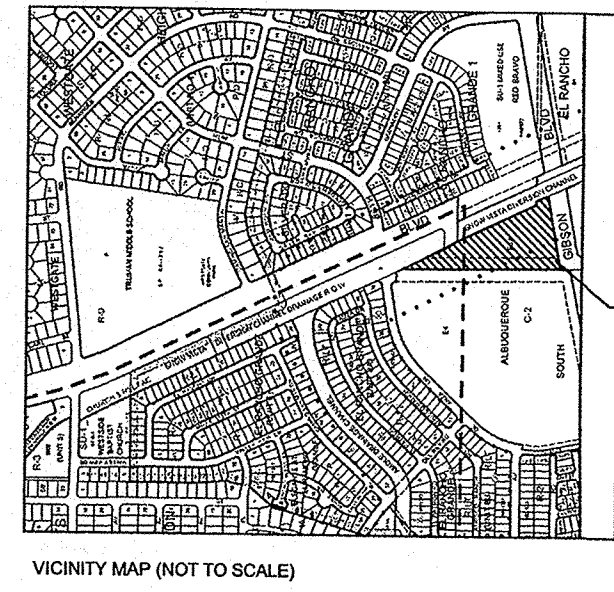


LEGEND

- NEW RIP RAP OR COBBLE STONE
- NEW BASE COURSE
- NEW CONCRETE
- NEW GRAVEL
- NEW ASPHALT PAVEMENT
- NEW BRICK STAMPED CONCRETE
- PROPERTY LINE
- PROPOSED SMOOTH 3 WIRE FENCE REPLACES EXISTING AMAFCA BARBED WIRE PROPERTY LINE FENCE
- PROPOSED OVERHEAD TRANSMISSION LINE
- SWALE
- NEW MAJOR CONTOUR
- NEW MINOR CONTOUR
- EXISTING MAJOR CONTOUR
- EXISTING MINOR CONTOUR

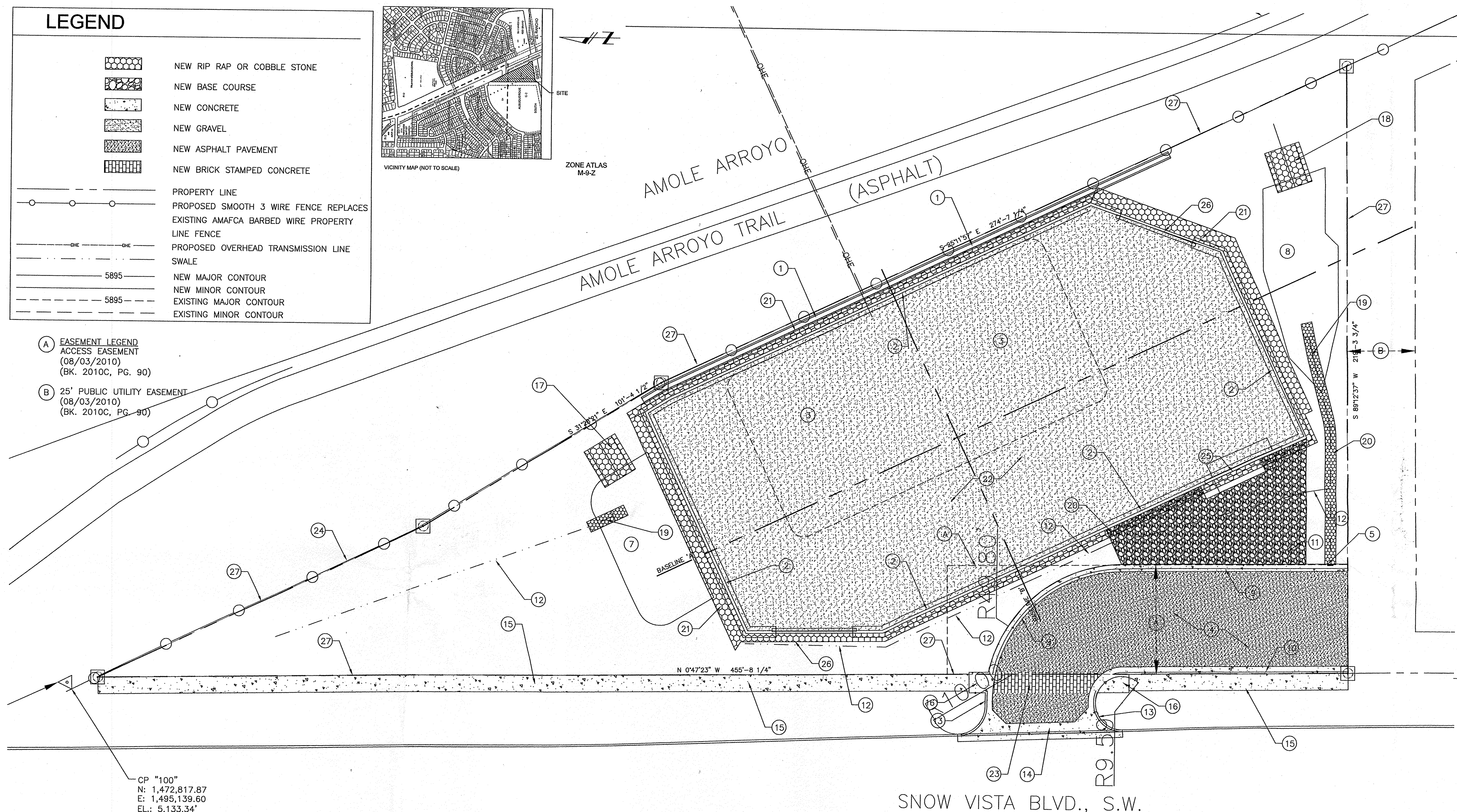
(A) EASEMENT LEGEND
ACCESS EASEMENT
(08/03/2010)
(BK. 2010C, PG. 90)

(B) 25' PUBLIC UTILITY EASEMENT
(08/03/2010)
(BK. 2010C, PG. 90)



ZONE ATLAS
M-9-Z

AMOLE ARROYO (ASPHALT)
AMOLE ARROYO TRAIL



CP "100"
N: 1,472,817.87
E: 1,495,139.60
EL.: 5,133.34'

SNOW VISTA BLVD., S.W.

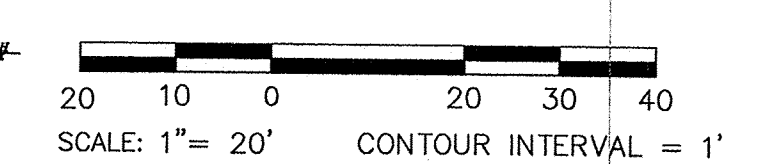
KEY NOTES

- 1 NEW 196.50' RETAINING WALL WITH FENCE MOUNTED ON TOP.
- 2 NEW 12' YARD WALL. 88'x180'x52'x73'x170'x50'
- 3 NEW 8" DEEP DRAINAGE BASIN.
- 4 NEW 34'-6" PAVED DRIVEWAY (ASPHALT PAVEMENT).
- 5 CURB CUT IN NEW CURB AND GUTTER TO ALLOW FOR DRAINAGE.
- 7 NEW WATER HARVEST AREA #1.
- 8 NEW WATER HARVEST AREA #2.
- 9 NEW MOUNTABLE CURB ROLL TYPE.
- 10 NEW DEPRESSED GUTTER.
- 11 NEW 68' BASE COURSE DRIVEWAY.
- 12 NEW EARTHEN SWALE.
- 13 NEW STANDARD CURB AND GUTTER.
- 14 NEW CONCRETE VALLEY GUTTER.
- 15 NEW 6' SIDEWALK.
- 16 NEW HANDICAP RAMP.
- 17 NEW RIP RAP SPILLWAY #1.
- 18 NEW RIP RAP SPILLWAY #2.
- 19 NEW RIP RAP RUNDOWN.
- 20 NEW RIP RAP SWALE.
- 21 NEW COBBLE STONE APRON.
- 22 NEW GREY GRAVEL SURFACING.
- 23 NEW BRICK STAMPED AND GREY COLORED CONCRETE.
- 24 FENCE
- 25 24" SWING GRILL
- 26 30" FIXED GRILL
- 27 PROPERTY LINE

PROPERTY:
PUBLIC SERVICE COMPANY OF NEW MEXICO - SNOW VISTA
SUBSTATION, TRACT E-5-A-1 CONTAINING 1.1669 ACRES.
LOCATED EAST OF SNOW VISTA RD. SW, BERNALILLO COUNTY,
NEW MEXICO (ZONING OF PROPERTY C-2)
CONTRACTOR SHALL FIELD VERIFY THE HORIZONTAL AND VERTICAL
LOCATION OF ALL UNDERGROUND UTILITIES.

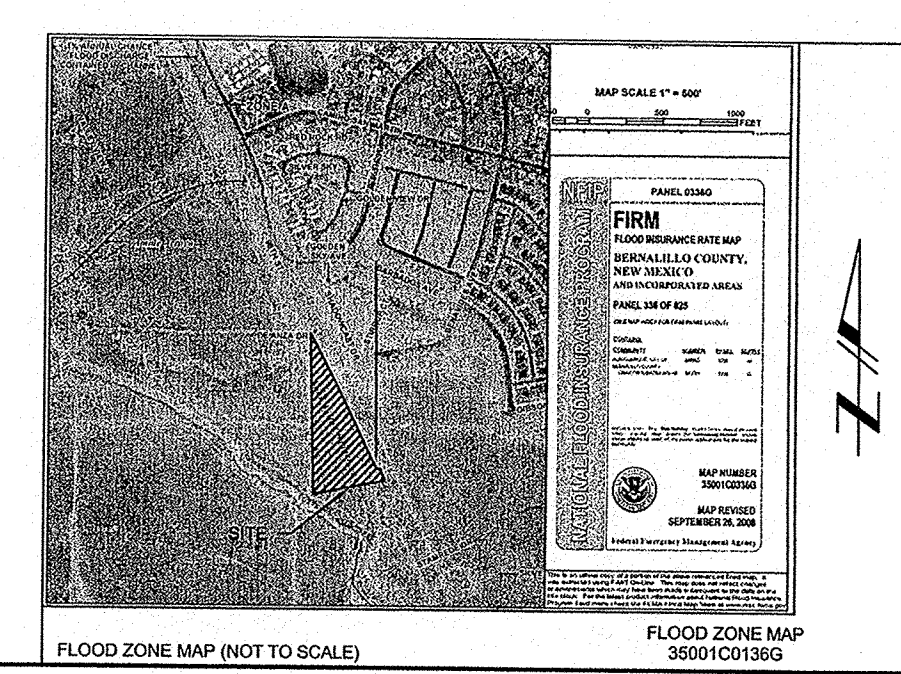
PROJECT NUMBER:
APPLICATION NUMBER:
This plan is consistent with the specific Site Development Plan approved by the
Environmental Planning Commission (EPC), dated _____, and the Findings
and Conditions in the Official Notification of Decisions are satisfied.
Is an Infrastructure List required? () Yes () No If yes then a set
of approved DRG plans with a work order is required for any construction within
Public Right-of-Way or for construction of public improvements.

DRB SITE DEVELOPMENT PLAN APPROVAL:	
TRAFFIC ENGINEER, TRANSPORTATION DIVISION	DATE
WATER UTILITIES DEVELOPMENT	DATE
PARKS AND RECREATION DEPARTMENT	DATE
CITY ENGINEER	DATE
SOLID WASTE MANAGEMENT	DATE
DRB CHAIRPERSON, PLANNING DEPARTMENT	DATE
ENVIRONMENTAL HEALTH DEPARTMENT (conditional)	



EXISTING ON SITE CONDITIONS
THE PROJECT SITE CONSISTS OF 1.17 ACRES (MORE OR LESS) AND IS CURRENTLY UNDEVELOPED AND CONSISTS OF BARE LAND WITH SPARSE NATIVE VEGETATION. THE PROJECT SITE SLOPES TO THE SOUTHEAST, TO THE AMOLE ARROYO ALONG THE EASTERN PROPERTY LINE. THE PROPERTY SLOPES MODERATELY AT ABOUT 4% TO 6% TO THE SOUTHEAST. THE EASTERN PROPERTY JUST OUTSIDE THE PROPERTY LINE SLOPES 4' TO 10' DOWN AT AN APPROXIMATE SLOPE OF 5:1 TO THE AMOLE TRAIL. THE SUBJECT PROPERTY IS BORDERED ON THE WEST BY SNOW VISTA BOULEVARD SW, ON THE SOUTH BY A PRIVATE OWNER (VICINITY LAND) AND ON THE EAST BY THE AMOLE TRAIL AND AMOLE ARROYO. THE EXISTING LAND TREATMENTS FOR THE SITE ARE CATEGORIZED AS 100% A, 0% B, 0% C AND 0% D.

PROPOSED CONDITIONS
THE PROPOSED IMPROVEMENTS WILL CONSIST OF A 217'x110' PNM ELECTRICAL SUBSTATION. THE SUBSTATION HAS PNM EQUIPMENT INSIDE OF DECORATIVE BLOCK WALLS. THE SURFACE INSIDE THE WALLS WILL BE SURFACED WITH A GRAVEL MATERIAL. PNM REQUIRES THAT ALL STORM WATER RUNOFF WITHIN THE SUBSTATION WALLS BE CONTAINED WITHIN THE WALLS OF THE SUBSTATION WITHIN A 8" DEEP DEPRESSION AS INDICATED ON THE GRADING PLAN. THE SUBSTATION WILL BE ACCESSED BY A 34' WIDE ASPHALT PAVED DRIVEWAY FROM SNOW VISTA BOULEVARD S.W. LOCATED WEST OF THE PROPOSED SUBSTATION. THE ONLY IMPERVIOUS AREAS ARE SMALL CONCRETE FOOTINGS WITHIN THE SUBSTATION WALLS, THE TOP OF THE SUBSTATION WALLS, AND THE ENTRANCE DRIVEWAY WHICH WILL CONSIST OF CURB AND GUTTER AND ASPHALT. THE SITE HAS BEEN DELINEATED INTO TWO EXISTING ON-SITE BASINS (BASINS A AND B), AND THREE ON-SITE BASINS (BASINS A, B, AND C) AS INDICATED ON THE EXISTING AND PROPOSED DRAINAGE BASIN MAPS ON THIS SHEET. THE PROPOSED LAND TREATMENTS ARE PROVIDED IN THE HYDROLOGY TABLES DIRECTLY BELOW THE EXISTING AND PROPOSED DRAINAGE BASIN MAPS ON THIS SHEET.



PROPRIETARY STATEMENT

THIS DOCUMENT AND ALL PREVIOUS ISSUES ARE THE PROPERTY OF PUBLIC SERVICE COMPANY OF NEW MEXICO ("PNM") AND NEITHER RECEIPT NOR POSSESSION THEREOF INFERS OR TRANSFERS ANY RIGHT IN OR LICENSE TO USE THIS DOCUMENT THE SUBJECT MATTER THEREOF OR ANY DESIGN OR TECHNICAL INFORMATION SHOWN THEREON OR ANY RIGHT TO REPRODUCE THIS DOCUMENT OR ANY PART THEREOF. NEITHER THIS DOCUMENT NOR ANY INFORMATION CONTAINED THEREIN MAY BE COPIED, REPRODUCED, OR OTHERWISE USED OR DISCLOSED TO ANY OTHER PARTY WITHOUT FIRST OBTAINING THE EXPRESS WRITTEN PERMISSION OF PNM. THIS DOCUMENT IS PROVIDED UNDER THE EXPRESS CONDITION THAT IT WILL BE HELD IN CONFIDENCE BY THE RECIPIENT, THAT IT IS SUBJECT TO RETURN UPON DEMAND, AND THAT IT WILL NOT BE USED IN ANY WAY DETRIMENTAL TO PNM.

PNM PUBLIC SERVICE COMPANY OF NEW MEXICO		
DEVELOPMENT SITE PLAN FOR BUILDING PERMIT SNOW VISTA (AKA SOUTH WEST MESA)		
DR: JMJ/KR	TR:	DATE: 7/30/12
CKD:	OK:	SCALE: 1" = 20'-0"
APP:	ACAD FILE:	SHEET 1 OF 7
REV. NO. 0	USS-8202-03	

REVISION	NO.	DATE	BY

LEGEND

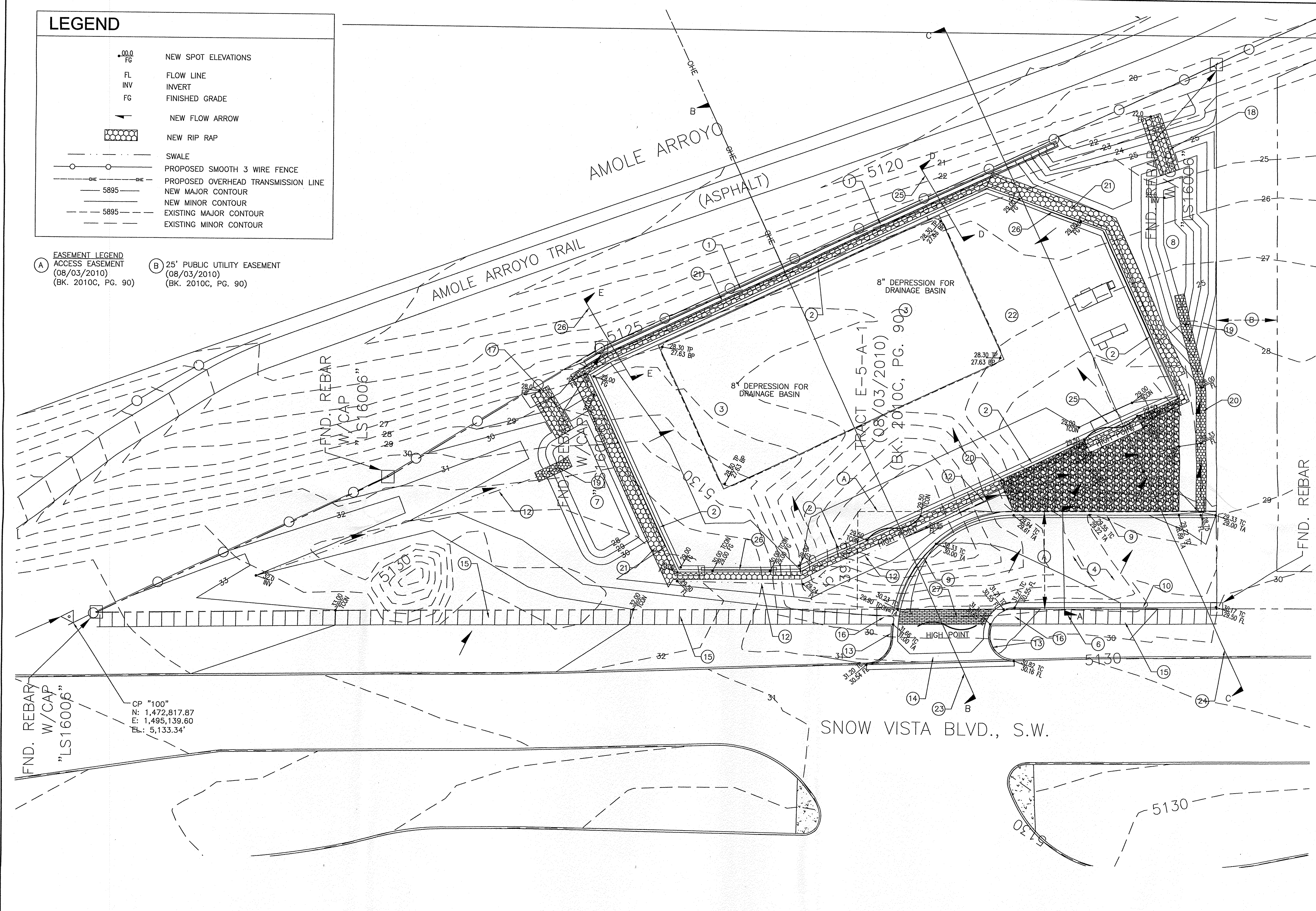
- NEW SPOT ELEVATIONS
- FLOW LINE
- INVERT
- FINISHED GRADE
- NEW FLOW ARROW
- NEW RIP RAP
- SWALE
- PROPOSED SMOOTH 3 WIRE FENCE
- PROPOSED OVERHEAD TRANSMISSION LINE
- NEW MAJOR CONTOUR
- NEW MINOR CONTOUR
- EXISTING MAJOR CONTOUR
- EXISTING MINOR CONTOUR

(A) EASEMENT LEGEND
ACCESS EASEMENT
(08/03/2010)
(BK. 2010C, PG. 90)

(B) 25' PUBLIC UTILITY EASEMENT
(08/03/2010)
(BK. 2010C, PG. 90)

KEY NOTES

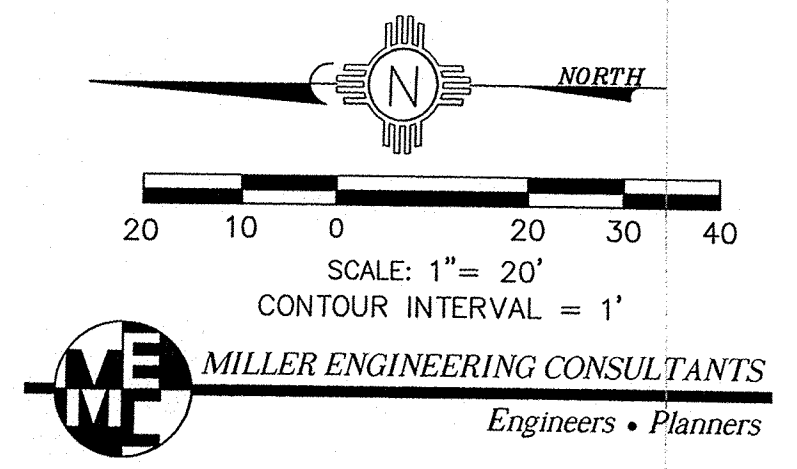
- 1 NEW RETAINING WALL WITH FENCE MOUNTED ON TOP. SEE STRUCTURAL SHEETS FOR ALL CONSTRUCTION REQUIREMENTS.
- 2 NEW YARD WALL. SEE STANDARD PNM DETAIL SHEETS FOR ALL CONSTRUCTION REQUIREMENTS.
- 3 NEW 8" DEEP DRAINAGE BASIN.
- 4 NEW ASPHALT PAVEMENT. SEE STANDARD CITY OF ALBUQUERQUE DETAIL DRAWING #2407 AND #2415A, COLLECTOR STREET.
- 5 PROVIDE 24" CURB CUT IN NEW CURB AND GUTTER TO ALLOW FOR DRAINAGE.
- 6 NOT USED
- 7 NEW WATER HARVEST AREA #1. SEE SHEET USS-8202-07 FOR TYPICAL SECTION DETAIL. TOP=30.0, INV=28.0
- 8 NEW WATER HARVEST AREA #2. SEE SHEET USS-8202-07 FOR TYPICAL SECTION DETAIL. TOP=26.50, INV=23.0
- 9 NEW MOUNTABLE CURB ROLL TYPE. SEE STANDARD CITY OF ALBUQUERQUE DETAIL DRAWING #2415A.
- 10 NEW DEPRESSED GUTTER. SEE STANDARD CITY OF ALBUQUERQUE DETAIL DRAWING #2415A.
- 11 NEW BASE COURSE SURFACING. SEE SHEET USS-8202-06 FOR TYPICAL SECTION DETAIL.
- 12 NEW EARTHEN SWALE. SEE SHEET USS-8202-06 FOR DETAIL.
- 13 NEW STANDARD CURB AND GUTTER. SEE STANDARD CITY OF ALBUQUERQUE DETAIL DRAWING #2415A.
- 14 NEW CONCRETE VALLEY GUTTER. SEE STANDARD CITY OF ALBUQUERQUE DETAIL DRAWING #2420.
- 15 NEW CONCRETE SIDEWALK. REFERENCE THIS SHEET FOR OFFSET DISTANCE FROM BACK OF EXISTING CURB FOR SNOW VISTA BLVD. OFFSET FROM BACK OF EXISTING CURB VARIES FROM 13' TO 19'. SEE STANDARD CITY OF ALBUQUERQUE DETAIL DRAWINGS #2430, #2431, #2450, AND #2451.
- 16 NEW HANDICAP RAMP. SEE SHEET USS-8202-06 FOR DETAIL.
- 17 NEW RIP RAP SPILLWAY #1. SEE SHEET USS-8202-07 FOR DETAIL. TOP OF SPILLWAY=29.0
- 18 NEW RIP RAP SPILLWAY #2. SEE SHEET USS-8202-07 FOR DETAIL. TOP OF SPILLWAY=25.5
- 19 NEW RIP RAP RUNDOWN. SEE SHEET USS-8202-07 FOR DETAIL.
- 20 NEW RIP RAP SWALE. SEE SHEET USS-8202-06 FOR DETAIL.
- 21 NEW COBBLE STONE APRON. SEE SHEET USS-8202-06 FOR DETAIL.
- 22 NEW GREY GRAVEL SURFACING
- 23 NEW BRICK STAMPED AND GREY COLORED CONCRETE.
- 24 FENCE
- 25 24 FOOT SWING GRILL
- 26 30 FOOT FIXED GRILL



REVISION	NO.	DATE	BY

PROPRIETARY STATEMENT
THIS DOCUMENT AND ALL PREVIOUS ISSUES ARE THE PROPERTY OF PUBLIC SERVICE COMPANY OF NEW MEXICO (PNM) AND NEITHER RECEIPT NOR POSSESSION THEREOF INFERS OR TRANSFERS ANY RIGHT IN OR LICENSE TO USE THIS DOCUMENT THE SUBJECT MATTER THEREOF OR ANY DESIGN OR TECHNICAL INFORMATION SHOWN THEREON OR ANY RIGHT TO REPRODUCE THIS DOCUMENT OR ANY PART THEREOF. NEITHER THIS DOCUMENT NOR ANY INFORMATION CONTAINED THEREIN MAY BE COPIED, REPRODUCED, OR OTHERWISE USED OR DISCLOSED TO ANY OTHER PARTY WITHOUT FIRST OBTAINING THE EXPRESS WRITTEN PERMISSION OF PNM. THIS DOCUMENT IS PROVIDED UNDER THE EXPRESS CONDITION THAT IT WILL BE HELD IN CONFIDENCE BY THE RECIPIENT, THAT IT IS SUBJECT TO RETURN UPON DEMAND, AND THAT IT WILL NOT BE USED IN ANY WAY DETRIMENTAL TO PNM.

PNM PUBLIC SERVICE COMPANY OF NEW MEXICO		
GRADING AND DRAINAGE PLAN		
GRADING AND DRAINAGE DESIGN		
SNOW VISTA SUBSTATION		
DR: JMJ/KR	TR:	DATE: 7/30/12
CKD:	OK:	SCALE: 1" = 20'-0"
APP:	ACAD FILE:	SHEET 2 OF 7
REV. NO. 0	USS-8202-05	



CP "100"
N: 1,472,817.87
E: 1,495,139.60
EL: 5,133.34'

FND. REBAR W/CAP "LS16006"

FND. REBAR W/CAP "LS16006"

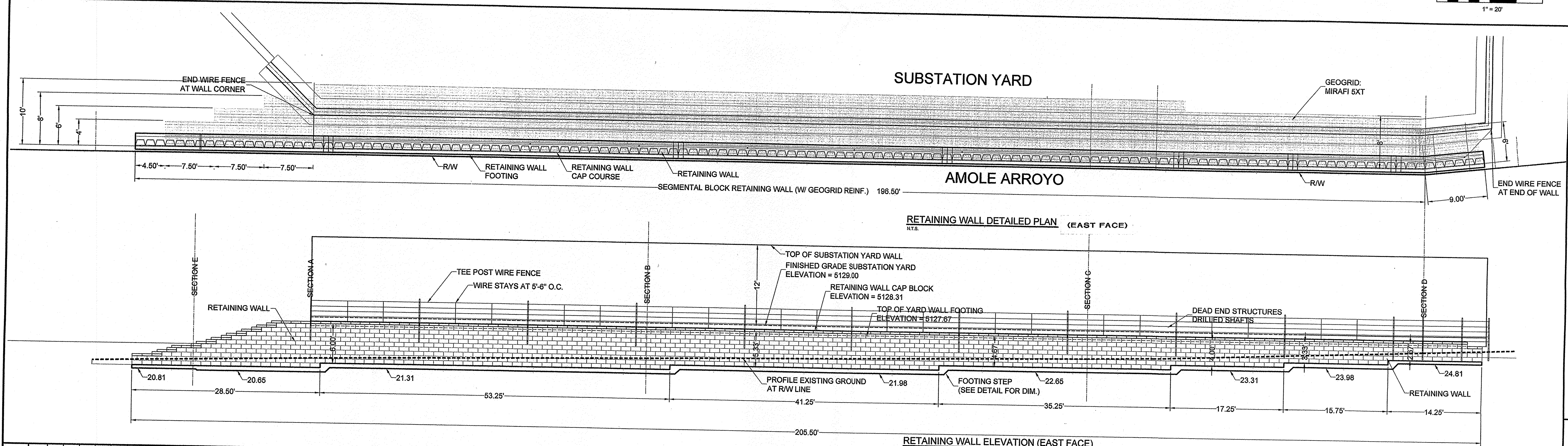
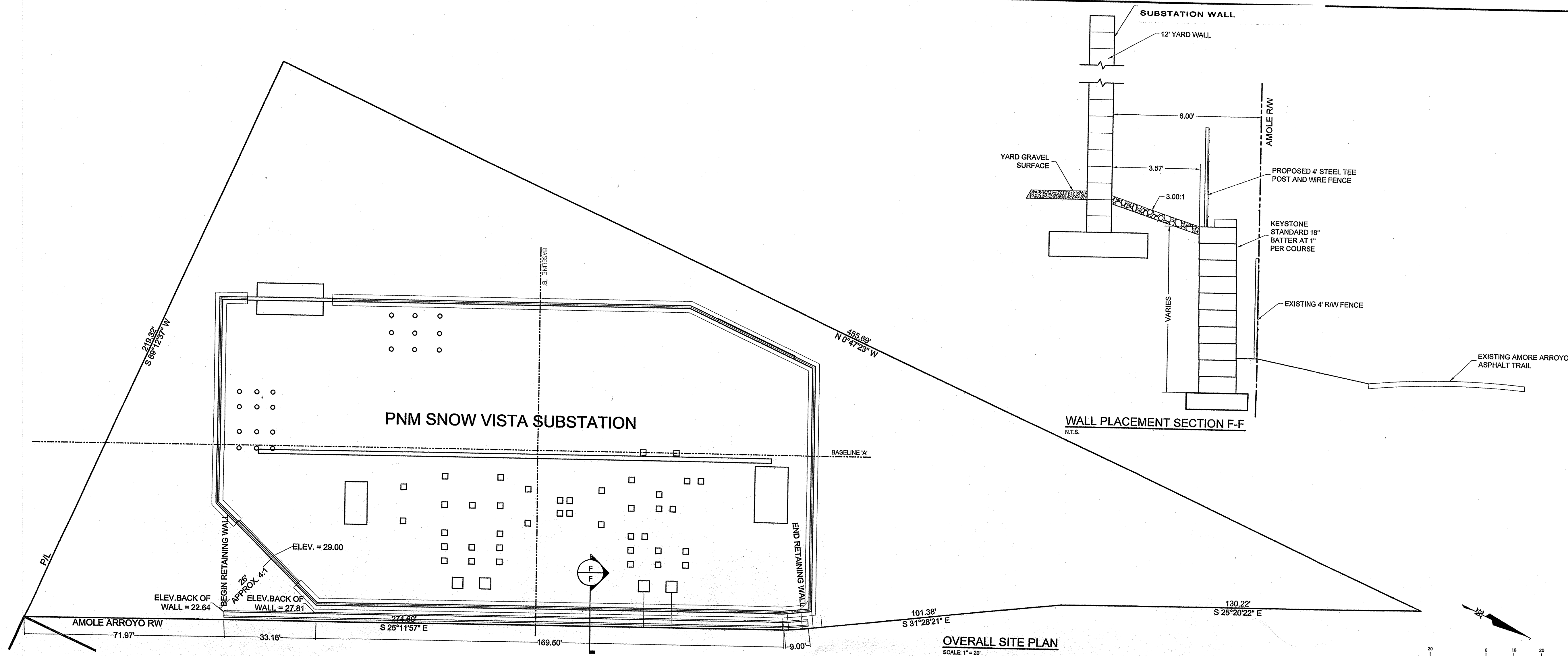
FND. REBAR

SNOW VISTA BLVD., S.W.

LEGEND

- 6621 — EXIST. CONTOUR / ELEV.
- 02.5 x — EXIST. SPOT ELEV.
- TC 48.17 — TOP OF CONCRETE ELEV.
- SG 48.17 — TOP OF SUBGRADE ELEV.
- FL 48.17 — FLOWLINE ELEV.
- 57 — PROPOSED CONT. / ELEV.
- — EASEMENT
- 20.2 — PROPOSED SPOT ELEV.
- ← — DRAINAGE SWALE
- ← — DIRECTION OF FLOW
- — DRAINAGE BASIN DIVIDE
- — CENTERLINE / BASELINE
- x x — EXIST. FENCE
- o — PROPOSED FENCE
- — UNPAVED ROAD
- [Pattern] — GRAVEL SURFACE
- [Pattern] — RIP RAP
- [Pattern] — CONCRETE FOUNDATIONS

NOTE:
 RETAINING WALL BLOCK COLOR
 IS PECOS GOLD #250
 (UTILITY BLOCK COMPANY, INC.)



FOR CONSTRUCTION OF THE RETAINING WALL, SEPARATE PERMIT FROM AMAFCA WILL BE REQUIRED PRIOR TO ANY EXCAVATION IN THE AMAFCA RIGHT-OF-WAY, ANY ACCESS FROM THE AMAFCA RIGHT-OF-WAY, OR REMOVAL AND REPLACEMENT OF THE EXISTING AMAFCA RIGHT-OF-WAY FENCE.

REVISION NO.	DATE	BY
1	04/18/12	PB
2	04/17/12	PB
3	08/27/12	PB

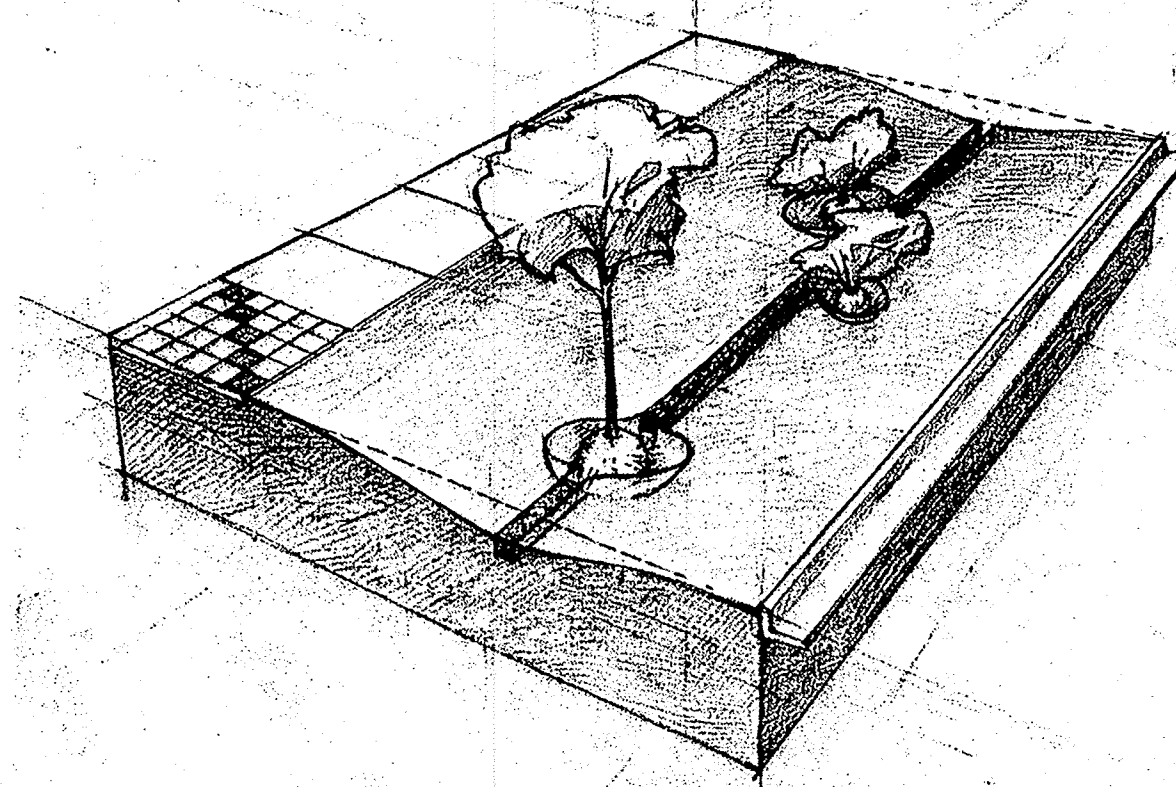
ASSOCIATED LAYERS	
LAYER NAME	DESCRIPTION
0	STANDARD
TBBL	TITLE BLOCK
DRAW	LINE WORK
TEXT	ALL TEXT

BRASHER & LORENZ
 CONSULTING ENGINEERS
 2201 Ben Pedro Building, Suite 1300
 Albuquerque, New Mexico 87110
 Ph: 505-888-8100 Fax: 505-888-8100

PNM PUBLIC SERVICE COMPANY
 OF NEW MEXICO

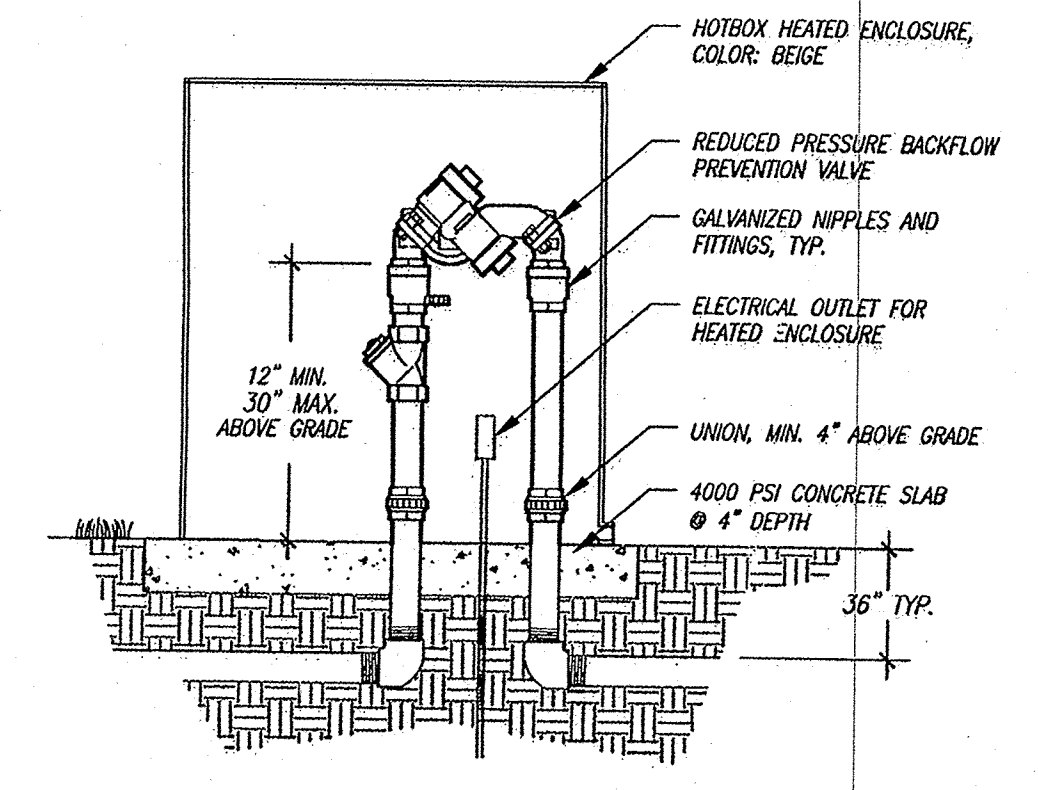
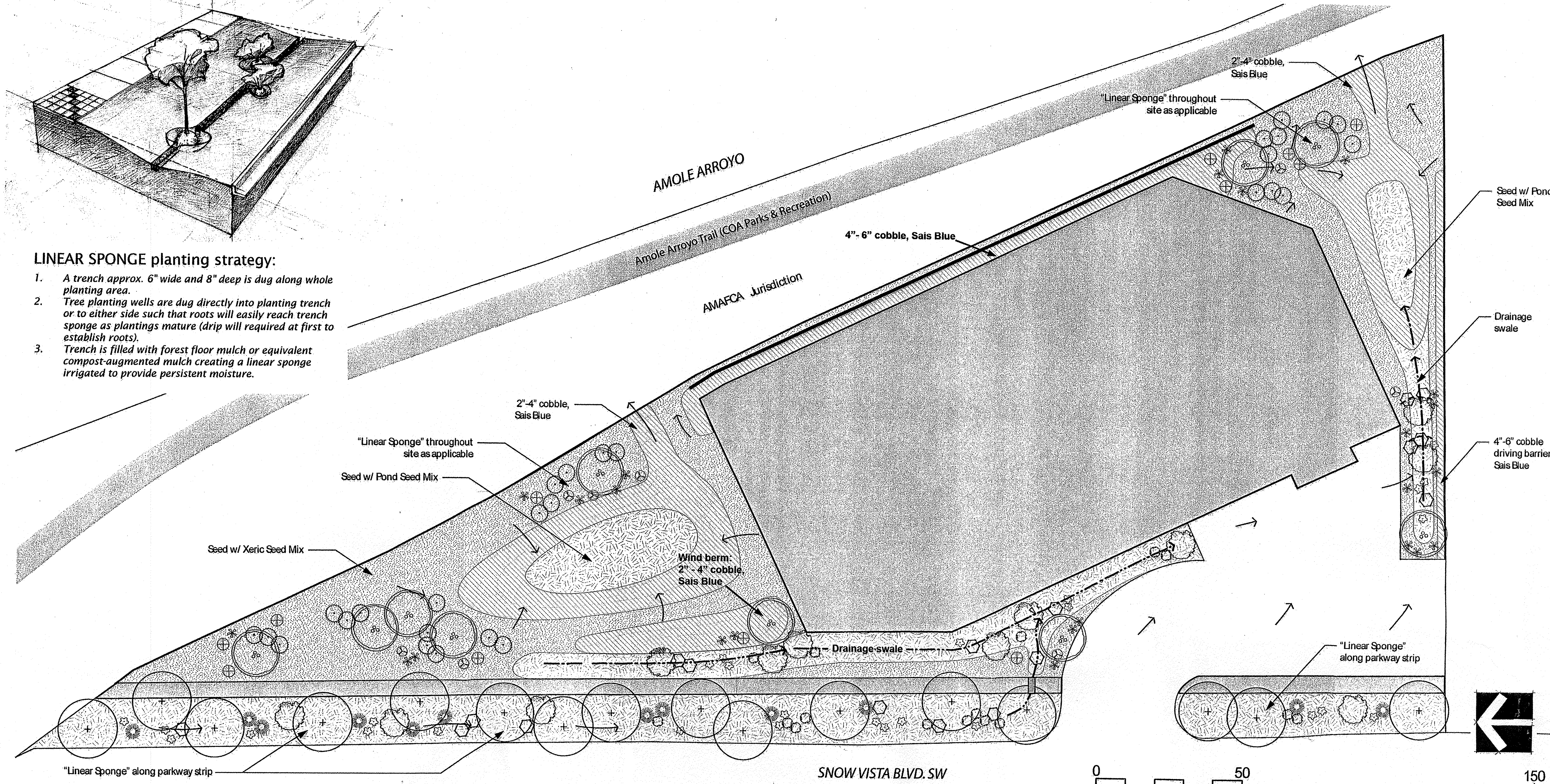
SNOW VISTA SUBSTATION RETAINING WALL
SHEET 3 OF 7

DRW: MVH	TR:	DATE: 7/30/12
CKD: DAL	OK:	SCALE: 1" = 20'
APP:	ACAD FILE:	12712
REV. NO.		USS -8202-09



LINEAR SPONGE planting strategy:

1. A trench approx. 6" wide and 8" deep is dug along whole planting area.
2. Tree planting wells are dug directly into planting trench or to either side such that roots will easily reach trench sponge as plantings mature (drip will required at first to establish roots).
3. Trench is filled with forest floor mulch or equivalent compost-augmented mulch creating a linear sponge irrigated to provide persistent moisture.

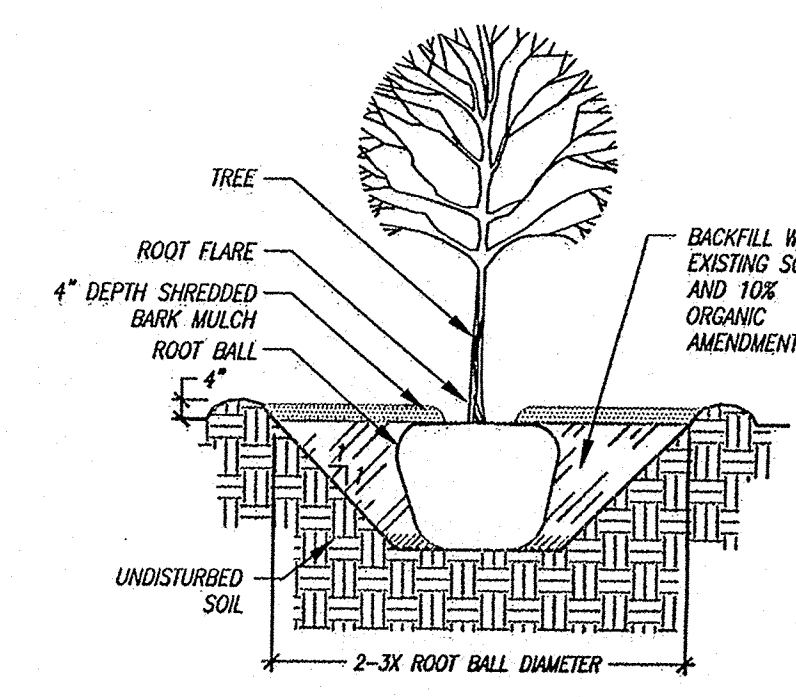


GENERAL NOTES:
 1. CONTRACTOR SHALL BE RESPONSIBLE FOR PROVIDING, COORDINATING, AND INSTALLING ALL ELECTRICAL AND ELECTRICAL SUPPLIES NECESSARY FOR THE INSTALLATION AND OPERATION OF THE IRRIGATION SYSTEM SPECIFIED.

A REDUCED PRESSURE BACKFLOW PREVENTOR ASSEMBLY

GENERAL NOTES:

1. KEEP SOIL BELOW ROOT BALL UNDISTURBED TO PREVENT TREE FROM SETTLING.
2. REMOVE ANY EXCESS SOIL FROM TOP OF ROOTBALL TO EXPOSE ROOT FLARE (WHERE TOP MOST ROOT EMERGES FROM THE TRUNK). PLANT WITH ROOT FLARE LEVEL TO FINISH GRADE (OR 1"-2" HIGHER IN SLOWLY DRAINING SOIL).
3. TAMP SOIL FIRMLY AROUND BASE OF ROOTBALL WITH FOOT PRESSURE.
4. DO NOT PLACE MULCH IN CONTACT WITH TREE, KEEP AT LEAST 4" AWAY FROM TRUNK.
5. AFTER PLANTING, THOROUGHLY WATER TO ELIMINATE AIR POCKETS.



B TREE PLANTING

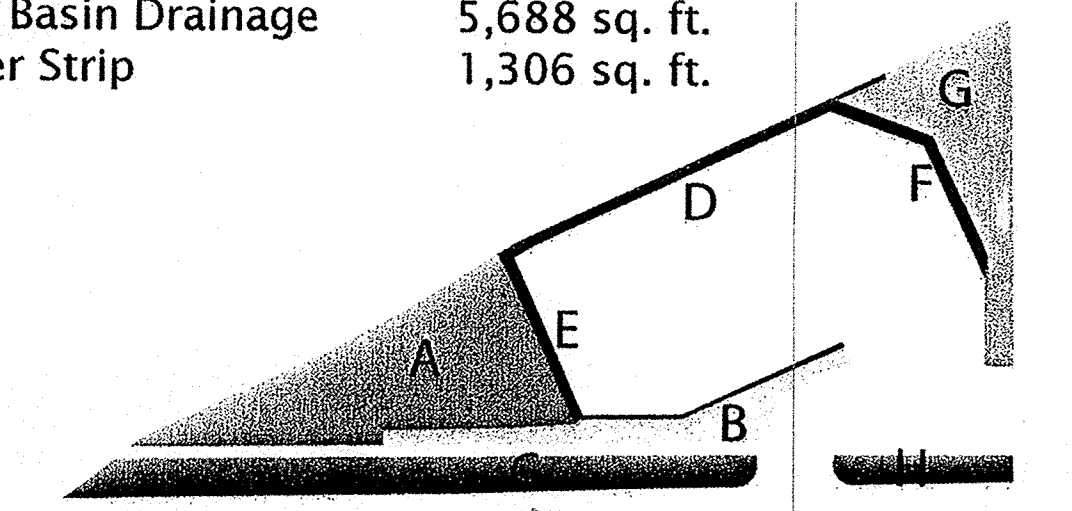
CALCULATIONS

SITE AREA: 61,920 sq. ft.
 BUILDING PAD AREA: 32,833 sq. ft.
 NET SITE AREA: 29,087 sq. ft.

REQ. LANDSCAPE AREA (15%): 3,302 sq. ft.
 PROVIDED LANDSCAPE AREA (21%): 4,700 sq. ft.

LANDSCAPE AREAS

A	North Basin Drainage	10,195 sq. ft.
B	Drainage to South Basin	2,872 sq. ft.
C	Divider Strip	6,261 sq. ft.
D	Retaining Wall Planting	1,121 sq. ft.
E	Cobble Apron	897 sq. ft.
F	Cobble Apron	721 sq. ft.
G	South Basin Drainage	5,688 sq. ft.
H	Divider Strip	1,306 sq. ft.



XERIC PLANT SCHEDULE

TREES:	COMMON NAME	BOTANICAL NAME	CONDITION	SIZE	QTY.	NOTES
+	NETLEAF HACKBERRY	Celtis reticulata	2-1/2" cal.	30' x 30'	16	
⊗	DESERT WILLOW	Chilopsis linearis	24" box	18' x 18'	10	Multi-trunk
SHRUBS:	COMMON NAME	BOTANICAL NAME	CONDITION	SIZE	QTY.	NOTES
○	PROSTRATE SUMAC	Rhus trilobata 'Gro-Low'	5 gal.	2' x 6'	28	
⊕	TURPENTINE BUSH	Ericameria laricifolia	5 gal.	4' x 4'	12	Evergreen
⊗	BLUE ALGERITA	Mahonia fremontii	5 gal.	3' x 3'	10	Evergreen
*	MEXICAN BLUE SAGE	Salvia chamaedryoides	5 gal.	1' x 3'	24	Semi-evergreen

XERIC SEED MIX:	COMMON NAME	BOTANICAL NAME	#PLS / ACRE
■	BLUE GRAMA	Bouteloua gracilis	2.0
■	INDIAN RICEGRASS	Oryzopsis hymenoides	5.0
■	GALLETA	Pleuraphis jamesii	7.0
■	DESERT MARIGOLD	Baileya multiradiata	1.0
■	SAND DROPSEED	Sporobolus cryptandrus	1.0

POND / SWALE PLANT SCHEDULE

TREES:	COMMON NAME	BOTANICAL NAME	CONDITION	SIZE	QTY.	NOTES
○	CURL LEAF MOUNTAIN MAHOGANY	Cercocarpus ledifolius	24" box	12' x 12'	12	Evergreen
SHRUBS:	COMMON NAME	BOTANICAL NAME	CONDITION	SIZE	QTY.	NOTES
○	BROOM BACCHARIS	Baccharis salicina	5 gal.	6' x 6'	12	Semi-evergreen
○	FERNBUSH	Chamaebatiaria millefolium	5 gal.	5' x 6'	16	
○	CHERRY SAGE	Salvia greggii	5 gal.	3' x 3'	16	
○	SAND CHERRY	Prunus besseyi	5 gal.	2' x 4'	26	

POND SEED MIX:	COMMON NAME	BOTANICAL NAME	#PLS / ACRE
■	BLUE GRAMA	Bouteloua gracilis	2.0
■	SIDE-OATS GRAMA	Bouteloua curtipendula	6.0
■	ALKALI SACATON	Sporobolus airoides	1.0
■	BUSH MUHLY	Muhlenbergia porteri	2.0
■	GAILLARDIA	Gaillardia pulchella	1.0

RESPONSIBILITY OF MAINTENANCE

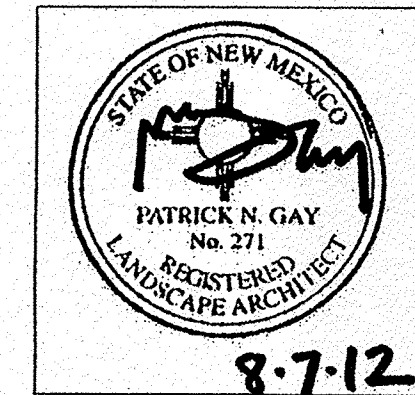
THE LANDSCAPE AND IRRIGATION SYSTEM SHALL BE MAINTAINED BY THE OWNER.

DESCRIPTION OF IRRIGATION SYSTEM

THE LANDSCAPE WILL BE SUSTAINED BY AN AUTOMATIC IRRIGATION SYSTEM.

COMPLIANCE w/ WATER CONSERVATION

THE LANDSCAPE DESIGN SHALL COMPLY WITH THE CITY OF ALBUQUERQUE WATER CONSERVATION LANDSCAPING AND WATER WASTE ORDINANCE, SECTION 6-1-1.

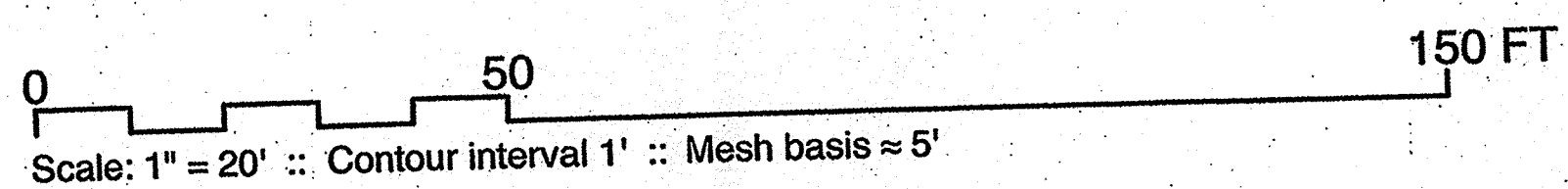
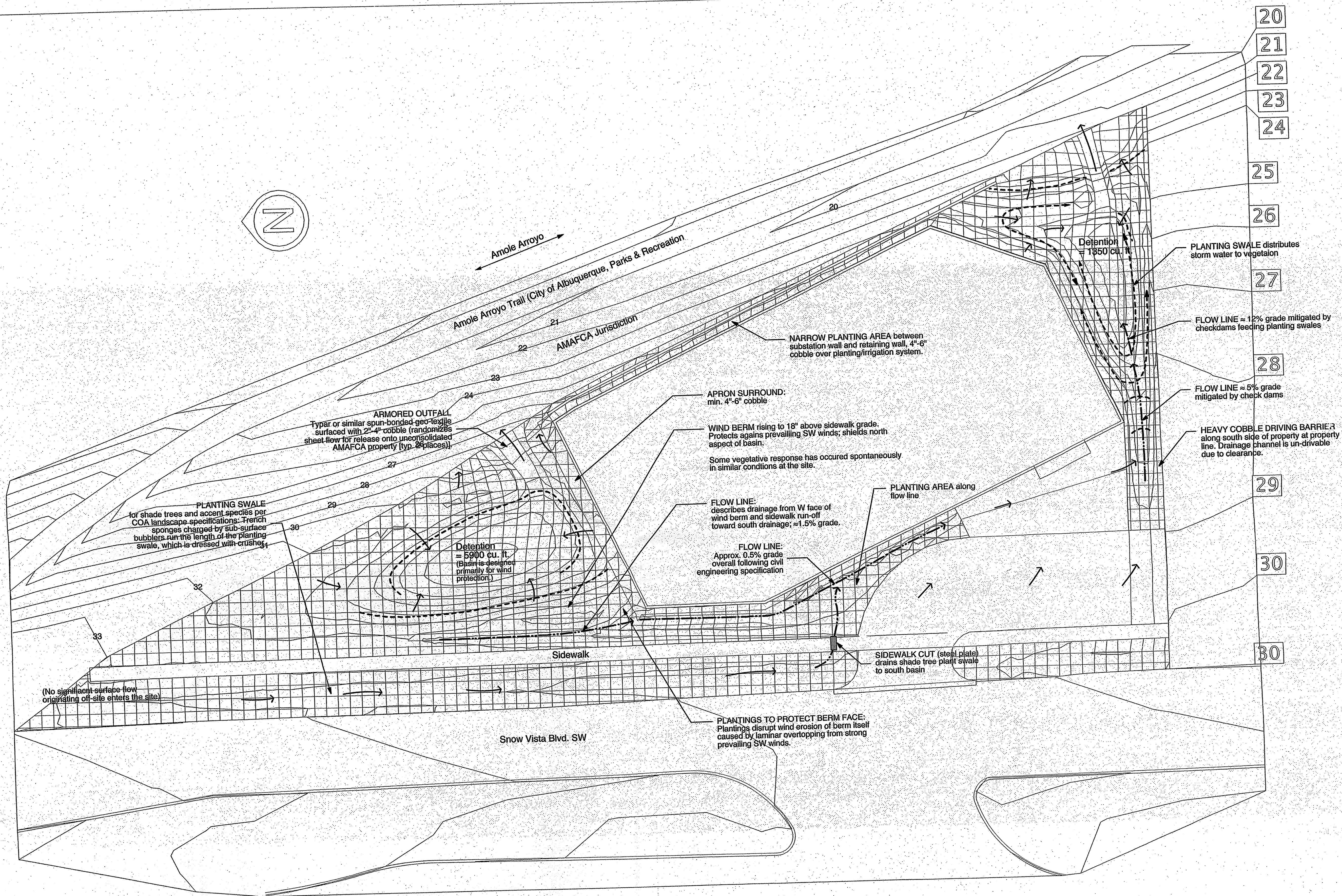
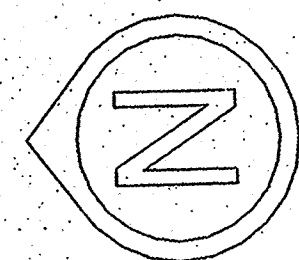


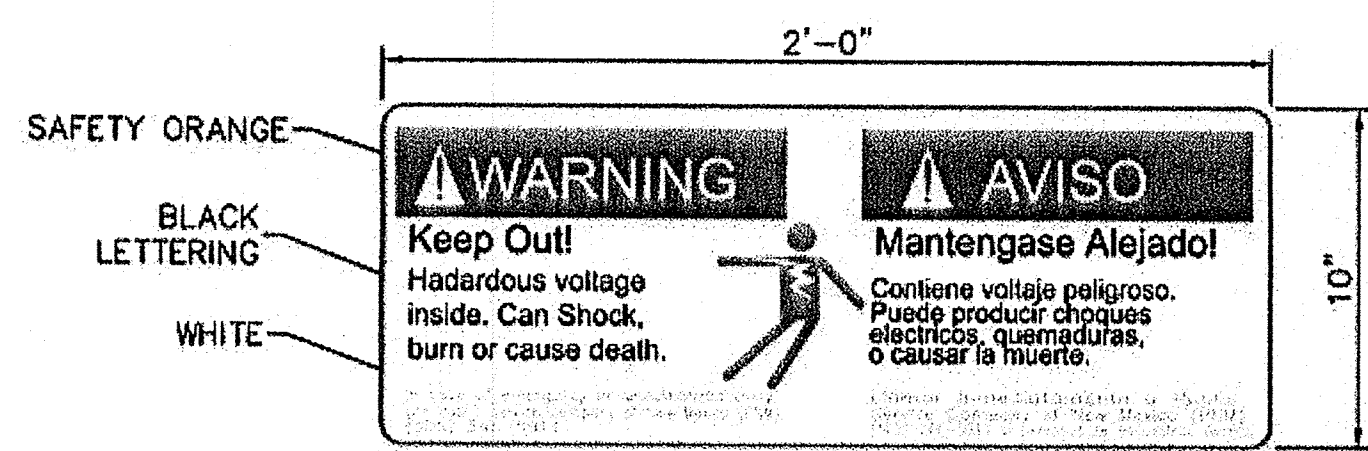
PNM :: Snow Vista Substation
 Landscape Plan
 August 7, 2012

Overview
 FOR DESIGN REVIEW & APPROVAL - NOT FOR CONSTRUCTION

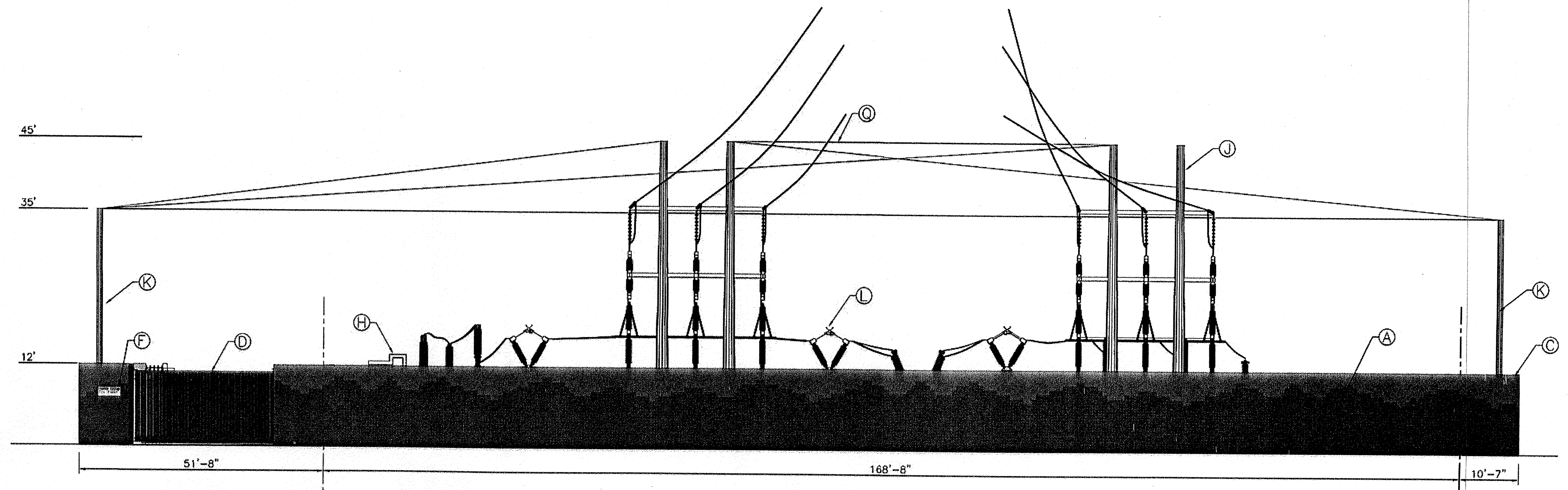
SHEET 4 OF 7

p 001 of 001 **L01**

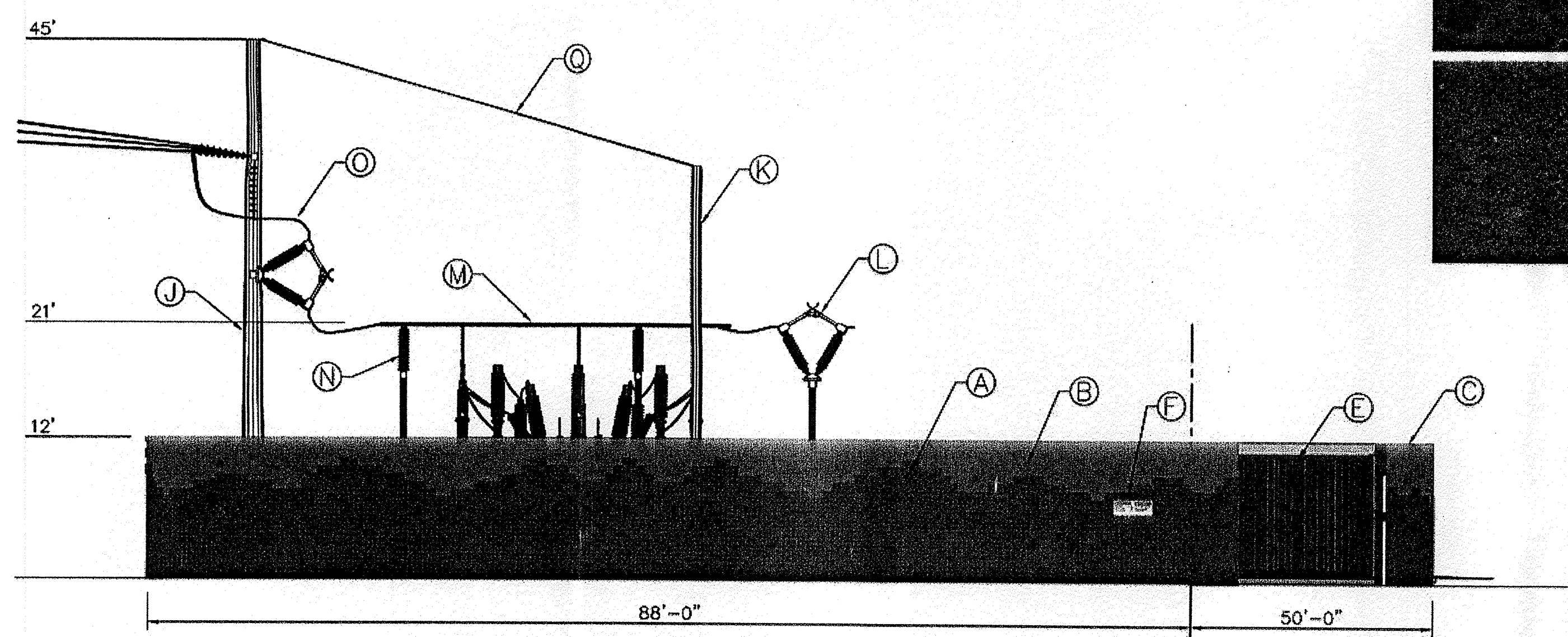




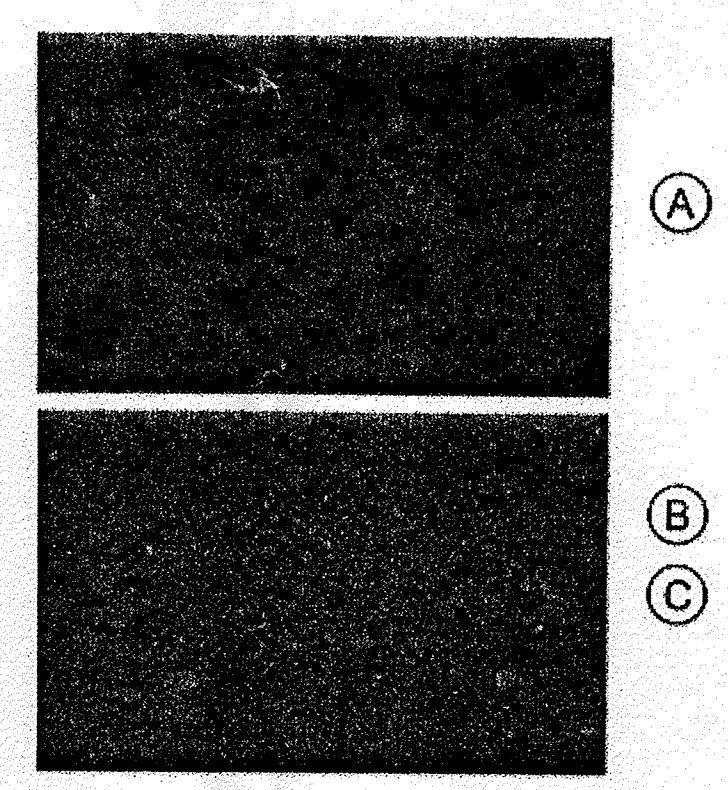
WARNING SIGN



EAST ELEVATION



NORTH ELEVATION



KEYED ITEM	COLOR	SPECIFICS
(A) SPLIT-FACE BLOCK (PECOS GOLD)*	EARTH TONE	UTILITY BLOCK CO. INC. #250
(B) SMOOTH-FACE BLOCK (PECOS GOLD)*	EARTH TONE	UTILITY BLOCK CO. INC. #250
(C) TOP & CAP BLOCK (PECOS GOLD)*	EARTH TONE	UTILITY BLOCK CO. INC. #250
(D) STEEL FIXED GRILL	EARTH TONE	PAINTED, BREVITY BROWN SW6068 (MEDIUM BROWN)
(E) STEEL SWING GRILL	EARTH TONE	PAINTED, BREVITY BROWN SW6068 (MEDIUM BROWN)
(F) WARNING SIGN	(SEE DETAIL)	NON-REFLECTIVE SURFACE
(H) TRANSFORMER	ANSI-70 GREY	NON-REFLECTIVE SURFACE
(I) TRANSMISSION STRUCTURE	WEATHERED STEEL	NON-REFLECTIVE SURFACE
(J) DEAD END STRUCTURE	WEATHERED STEEL	NON-REFLECTIVE SURFACE
(K) STATIC MAST	WEATHERED STEEL	NON-REFLECTIVE SURFACE
(L) V-SWITCH	ANSI-70 GREY	NON-REFLECTIVE SURFACE
(M) ELECTRIC BUS	ALUMINIUM GREY	NON-REFLECTIVE SURFACE
(N) BUS INSULATOR	ANSI-70 GREY	NON-REFLECTIVE SURFACE
(O) CONNECTION WIRE	ALUMINIUM GREY	NON-REFLECTIVE SURFACE
(P) OVER HEAD LINE	ALUMINIUM GREY	NON-REFLECTIVE SURFACE
(Q) STATIC LINE	ALUMINIUM GREY	NON-REFLECTIVE SURFACE

*Pecos Gold Utility Block # 250
LRV unavailable for all utility block descriptors

4. VERTICAL PILASTERS WITH A PROJECTION OF 2 INCHES WILL BE PLACED AT INTERVALS OF 20 FEET
- NOTES:
1. SUBSTATION WILL COMPLY WITH NEMA NOISE GUIDELINES.
2. SUBSTATION WILL BE MAINTAINED GRAFFITI FREE.
3. CONTINUOUS OVERHANG CAP WILL PROJECT TWO INCHES FROM WALL

REVISION	NO.	DATE	BY
	1	07-31-12	JAE

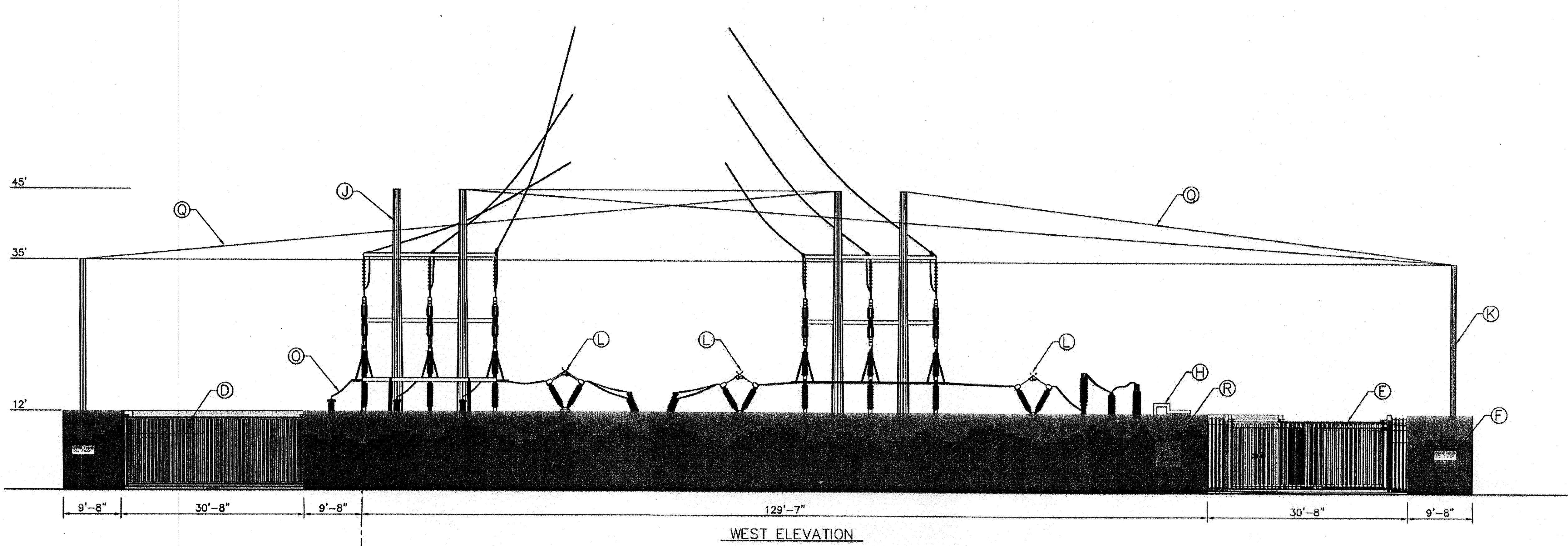
PROPRIETARY STATEMENT

THIS DOCUMENT AND ALL PREVIOUS ISSUES ARE THE PROPERTY OF PUBLIC SERVICE COMPANY OF NEW MEXICO ("PNM") AND NEITHER RECEIPT NOR POSSESSION THEREOF INFERS OR TRANSFERS ANY RIGHT IN OR LICENSE TO USE THIS DOCUMENT THE SUBJECT MATTER THEREOF OR ANY DESIGN OR TECHNICAL INFORMATION SHOWN THEREON OR ANY RIGHT TO REPRODUCE THIS DOCUMENT OR ANY PART THEREOF. NEITHER THIS DOCUMENT NOR ANY INFORMATION CONTAINED THEREIN MAY BE COPIED, REPRODUCED, OR OTHERWISE USED OR DISCLOSED TO ANY OTHER PARTY WITHOUT FIRST OBTAINING THE EXPRESS WRITTEN PERMISSION OF PNM. THIS DOCUMENT IS PROVIDED UNDER THE EXPRESS CONDITION THAT IT WILL BE HELD IN CONFIDENCE BY THE RECIPIENT, THAT IT IS SUBJECT TO RETURN UPON DEMAND, AND THAT IT WILL NOT BE USED IN ANY WAY DETRIMENTAL TO PNM.

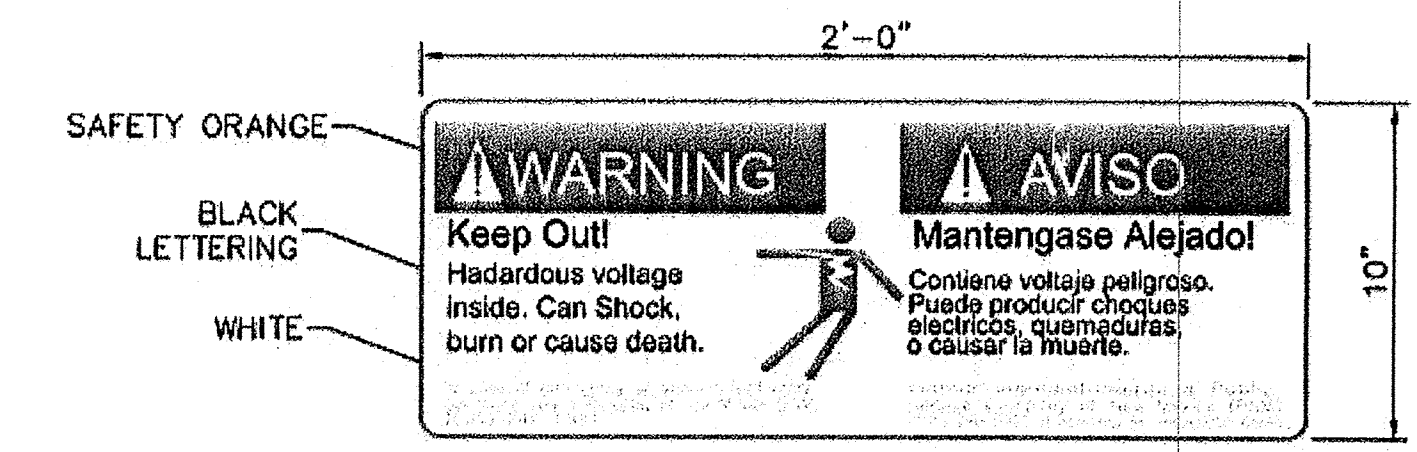
PNM PUBLIC SERVICE COMPANY OF NEW MEXICO

ELEVATION VIEW
115kV LAYOUT
SNOW VISTA (AKA SOUTH WEST MESA)

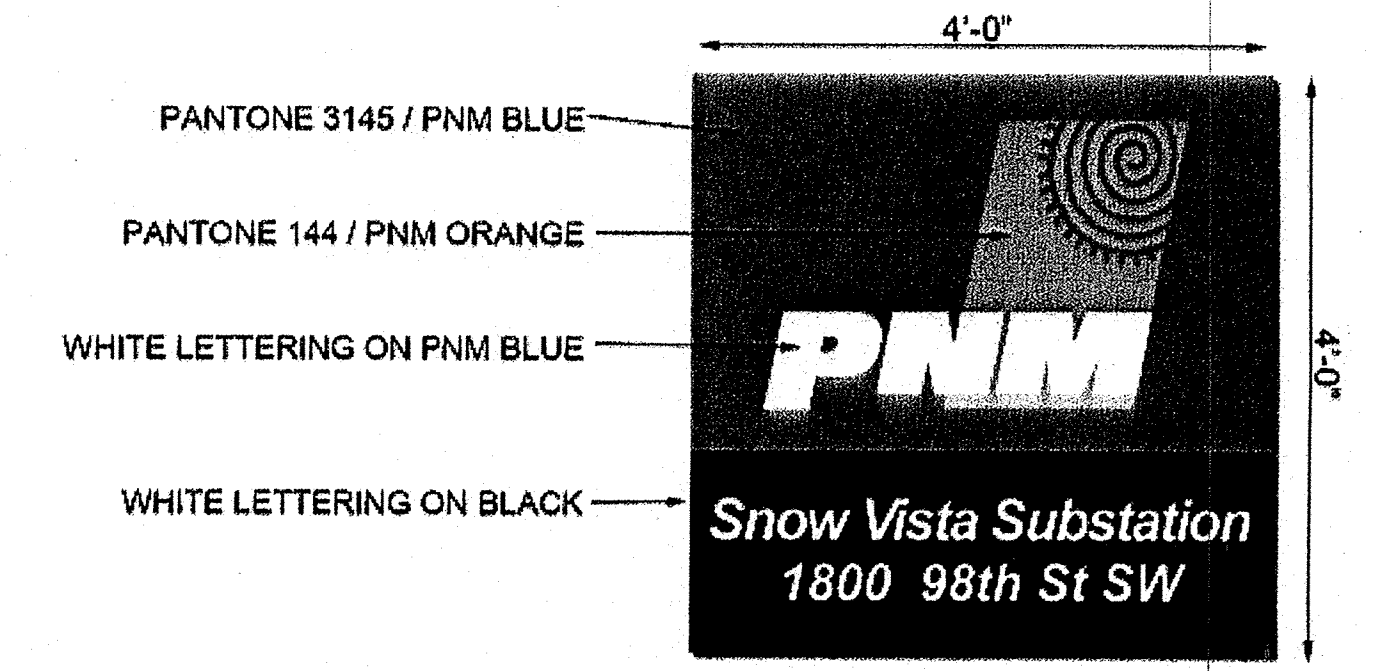
DR: DK	TR:	DATE: 7/30/12
CKD:	OK:	SCALE: 1"=10'-0"
APP:	ACAD FILE: USS8201	SHEET 6 OF 7
REV. NO.		



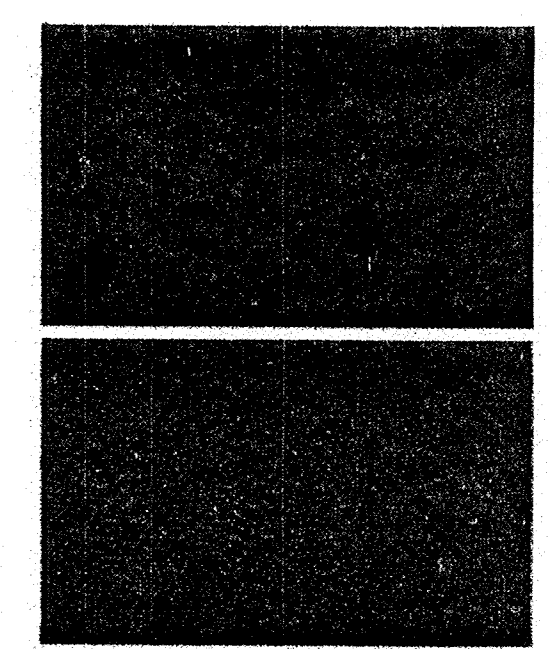
WEST ELEVATION



WARNING SIGN

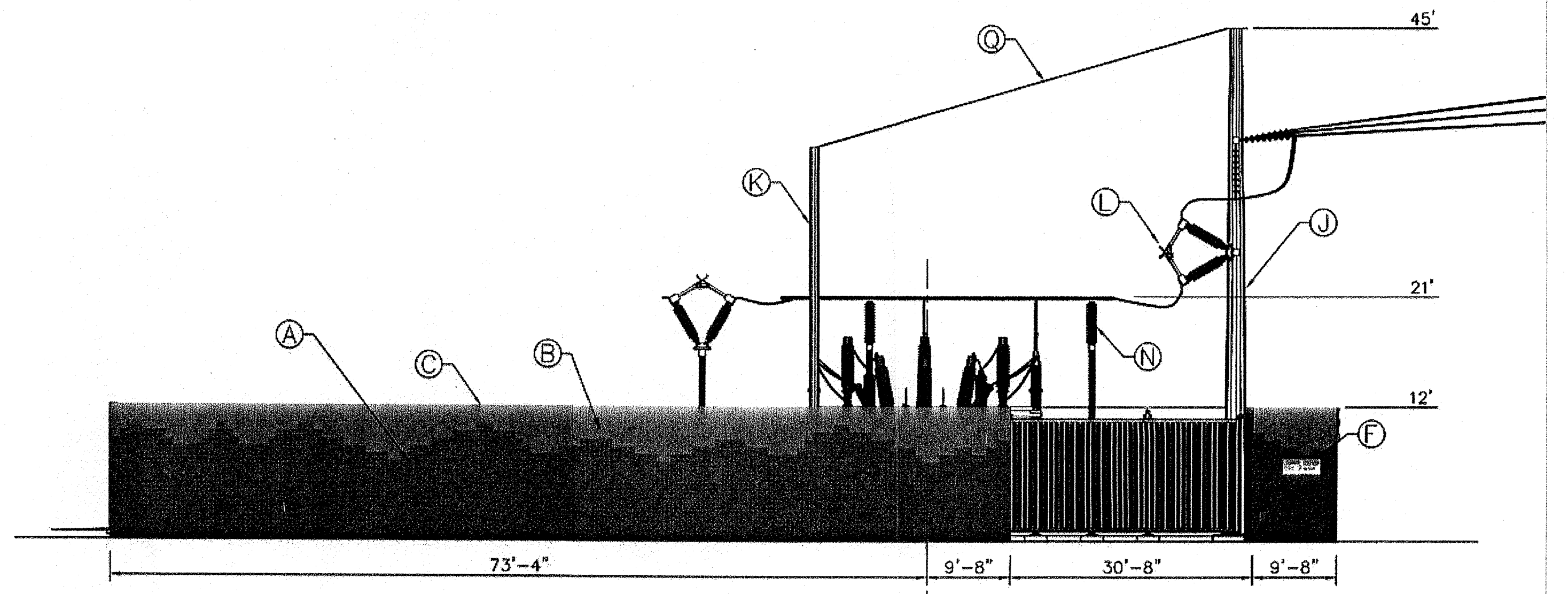


STATION SIGN



KEYED ITEM	COLOR	SPECIFICS
(A) SPLIT-FACE BLOCK (PECOS GOLD)*	EARTH TONE (MEDIUM BROWN)	UTILITY BLOCK CO. INC. #250
(B) SMOOTH-FACE BLOCK (PECOS GOLD)*	EARTH TONE (MEDIUM BROWN)	UTILITY BLOCK CO. INC. #250
(C) TOP & CAP BLOCK (PECOS GOLD)*	EARTH TONE (MEDIUM BROWN)	UTILITY BLOCK CO. INC. #250
(D) STEEL FIXED GRILL	EARTH TONE (MEDIUM BROWN)	PAINTED, BREVITY BROWN SW6068 LRV10 (MEDIUM BROWN)
(E) STEEL SWING GRILL	EARTH TONE (MEDIUM BROWN)	PAINTED, BREVITY BROWN SW6068 LRV10 (MEDIUM BROWN)
(F) WARNING SIGN	(SEE DETAIL)	NON-REFLECTIVE SURFACE
(H) TRANSFORMER	ANSI-70 GREY	NON-REFLECTIVE SURFACE
(I) TRANSMISSION STRUCTURE	WEATHERED STEEL	NON-REFLECTIVE SURFACE
(J) DEAD END STRUCTURE	WEATHERED STEEL	NON-REFLECTIVE SURFACE
(K) STATIC MAST	WEATHERED STEEL	NON-REFLECTIVE SURFACE
(L) V-SWITCH	ANSI-70 GREY	NON-REFLECTIVE SURFACE
(M) ELECTRIC BUS	ALUMINIUM GREY	NON-REFLECTIVE SURFACE
(N) BUS INSULATOR	ANSI-70 GREY	NON-REFLECTIVE SURFACE
(O) CONNECTION WIRE	ALUMINIUM GREY	NON-REFLECTIVE SURFACE
(P) OVER HEAD LINE	ALUMINIUM GREY	NON-REFLECTIVE SURFACE
(Q) STATIC LINE	ALUMINIUM GREY	NON-REFLECTIVE SURFACE
(R) PNM STATION SIGN	PNM COLORS	NON-REFLECTIVE SURFACE

*Pecos Gold Utility Block # 250
LRV unavailable for all utility block descriptors



SOUTH ELEVATION

- NOTES:
1. SUBSTATION WILL COMPLY WITH NEMA NOISE GUIDELINES.
 2. SUBSTATION WILL BE MAINTAINED GRAFFITI FREE.
 3. CONTINUOUS OVERHANG CAP WILL PROJECT TWO INCHES FROM WALL
4. VERTICAL PILASTERS WITH A PROJECTION OF 2 INCHES WILL BE PLACED AT INTERVALS OF 20 FEET

REVISION
NO. 1
DATE 07-31-12
BY JAE

PROPRIETARY STATEMENT

THIS DOCUMENT AND ALL PREVIOUS ISSUES ARE THE PROPERTY OF PUBLIC SERVICE COMPANY OF NEW MEXICO ("PNM") AND NEITHER RECEIPT NOR POSSESSION THEREOF INFERS OR TRANSFERS ANY RIGHT IN OR LICENSE TO USE THIS DOCUMENT THE SUBJECT MATTER THEREOF OR ANY DESIGN OR TECHNICAL INFORMATION SHOWN THEREON OR ANY RIGHT TO REPRODUCE THIS DOCUMENT OR ANY PART THEREOF. NEITHER THIS DOCUMENT NOR ANY INFORMATION CONTAINED THEREIN MAY BE COPIED, REPRODUCED, OR OTHERWISE USED OR DISCLOSED TO ANY OTHER PARTY WITHOUT FIRST OBTAINING THE EXPRESS WRITTEN PERMISSION OF PNM. THIS DOCUMENT IS PROVIDED UNDER THE EXPRESS CONDITION THAT IT WILL BE HELD IN CONFIDENCE BY THE RECIPIENT, THAT IT IS SUBJECT TO RETURN UPON DEMAND, AND THAT IT WILL NOT BE USED IN ANY WAY DETRIMENTAL TO PNM.

PNM PUBLIC SERVICE COMPANY OF NEW MEXICO

ELEVATION VIEW
115KV LAYOUT
SNOW VISTA (AKA SOUTH WEST MESA)

DR: DK	TR:	DATE: 7/30/12
CKD:	OK:	SCALE: 1"=10'-0"
APP:	ACAD FILE:	SHEET 7 OF
REV. NO.	USS8201	