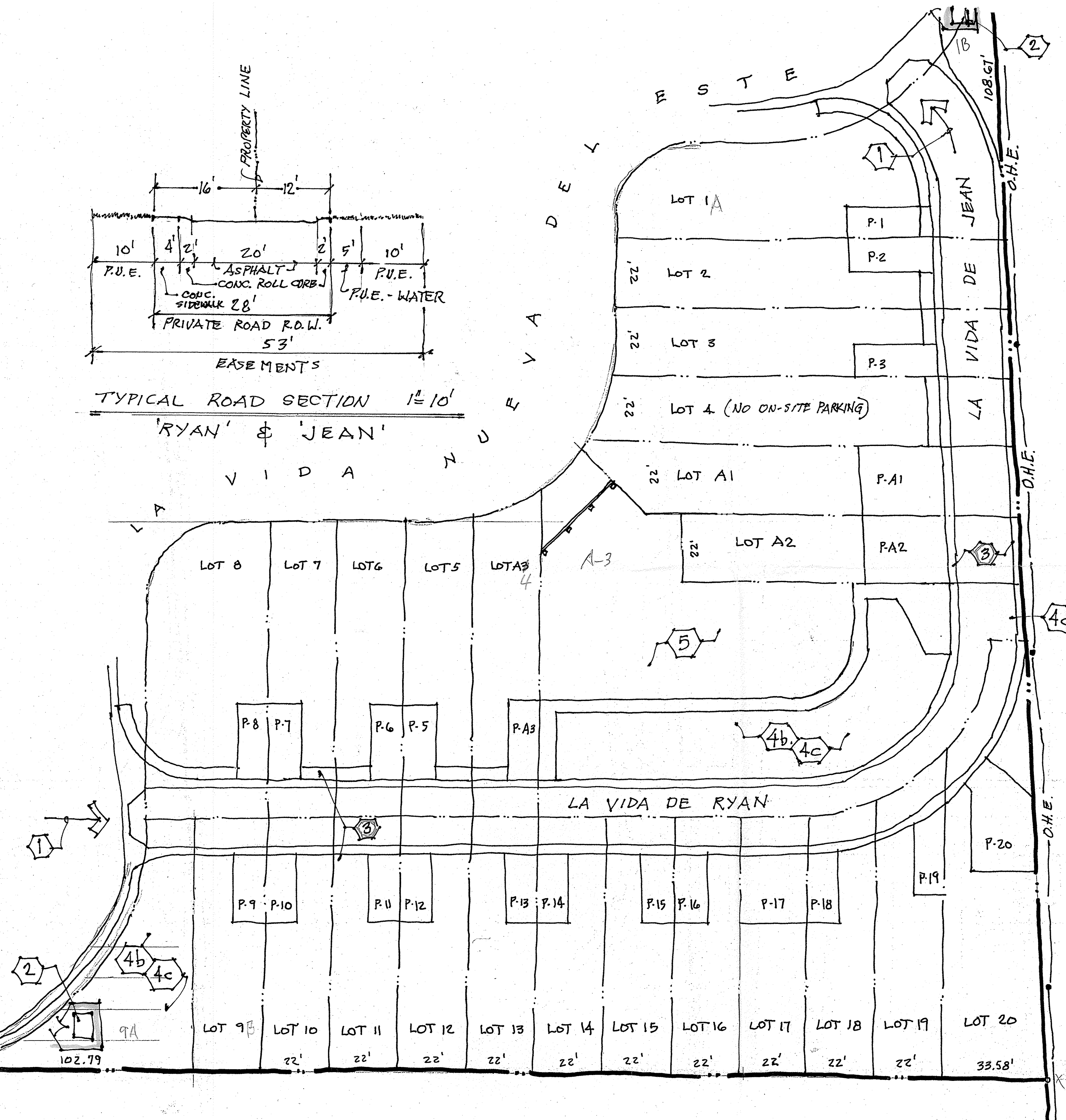


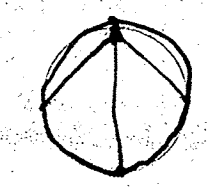
TYPICAL ROAD SECTION 1"=10'
'RYAN' & 'JEAN'

KEYED NOTES

1. ONE-WAY TRAFFIC WEST-TO-EAST / SOUTH-TO-NORTH. SPOT CONFORMITY.
2. BULK TRASH PICK-UP w/ ENCLOSURE. ONE OF TWO LOCATIONS. NO CURB-SIDE PICK-UP.
3. RANDOM ON-STREET PARKING INCLUDING AT "NO PARKING" SIGNAGE.
4. OFF-STREET PARKING: 35 REQ'D.
 - a. PRIVATE LOTS: 26 SPACES
 - b. H.O.A. COMMON: 12 SPACES
 - TOTAL: 38 SPACES
 - c. NON-REGISTERED VEHICLES PARK ON-STREET & IN COMMON PARKING AREA
5. H.O.A. COMMON AREA: DIRT WITH 2 PICNIC TABLES. MAINTAINED BY G.A.H.H.



LA VIDA NUEVA SUBDIVISION
EXISTING SITE PLAN 1"=20'



25 JUNE 2012