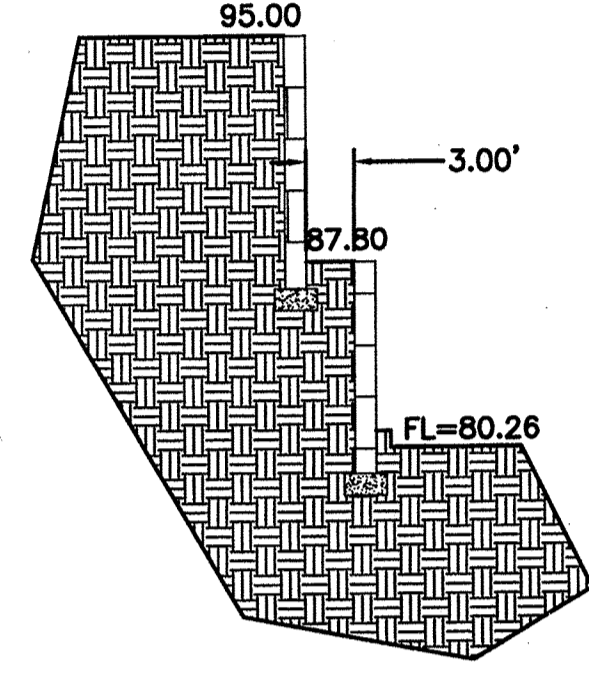


ACS STA "SDC 11-2A"
 X = 383,571.93
 Y = 1,474,274.10
 G-G = 0.99967527
 Δα = -00°13'24"
 NEW MEXICO STATE
 PLANE GRID, CENTRAL
 ZONE (NAD 1927)



SECTION B-B
 NTS

BEGIN 2' ALLEY GUTTER
 @ 0.40%
 SEE DETAIL THIS SHEET

BUILD 2' SW CULVERT
 FL @ CURB=5578.35

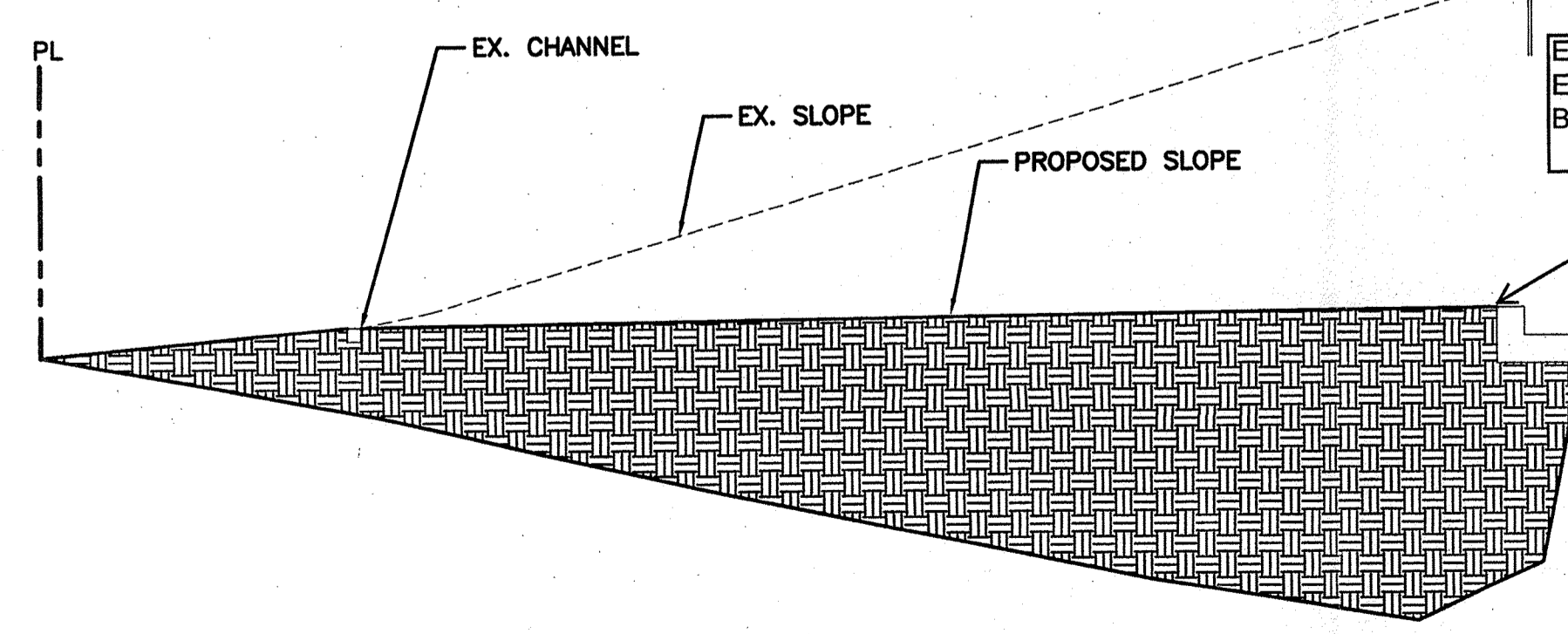
BUILD 2' SW CULVERT
 FL @ CURB=5578.00

END 2' ALLEY GUTTER
 @ 0.40%
 SEE DETAIL THIS SHEET

CONTRACTOR SHALL
 COORDINATE W/PNM FOR
 RELOCATION OF OVERHEAD
 POLE AND ANCHOR
 PRIOR TO BEGINNING ANY
 CONSTRUCTION

EDGE OF
 EASEMENT AT
 BACK OF CURB

EDGE OF
 EASEMENT AT
 BACK OF CURB



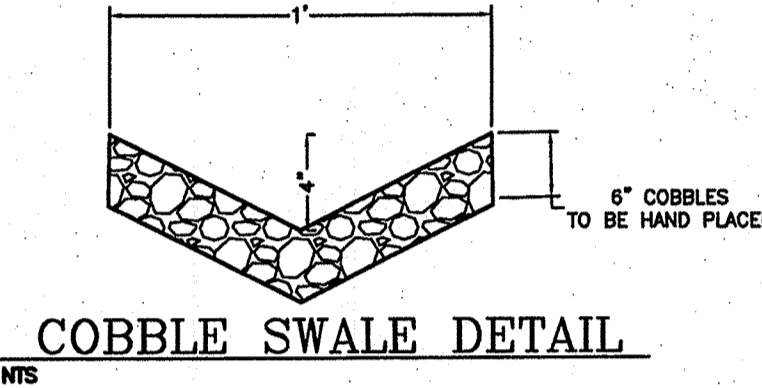
SECTION A-A
 NTS

TRANSPORT STREET, S.E.
 (60' R.O.W.)

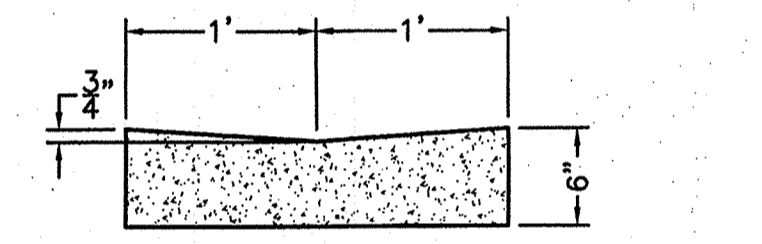
PORT BOULEVARD, S.E.
 (R.O.W. VARIES)

EROSION CONTROL NOTES:

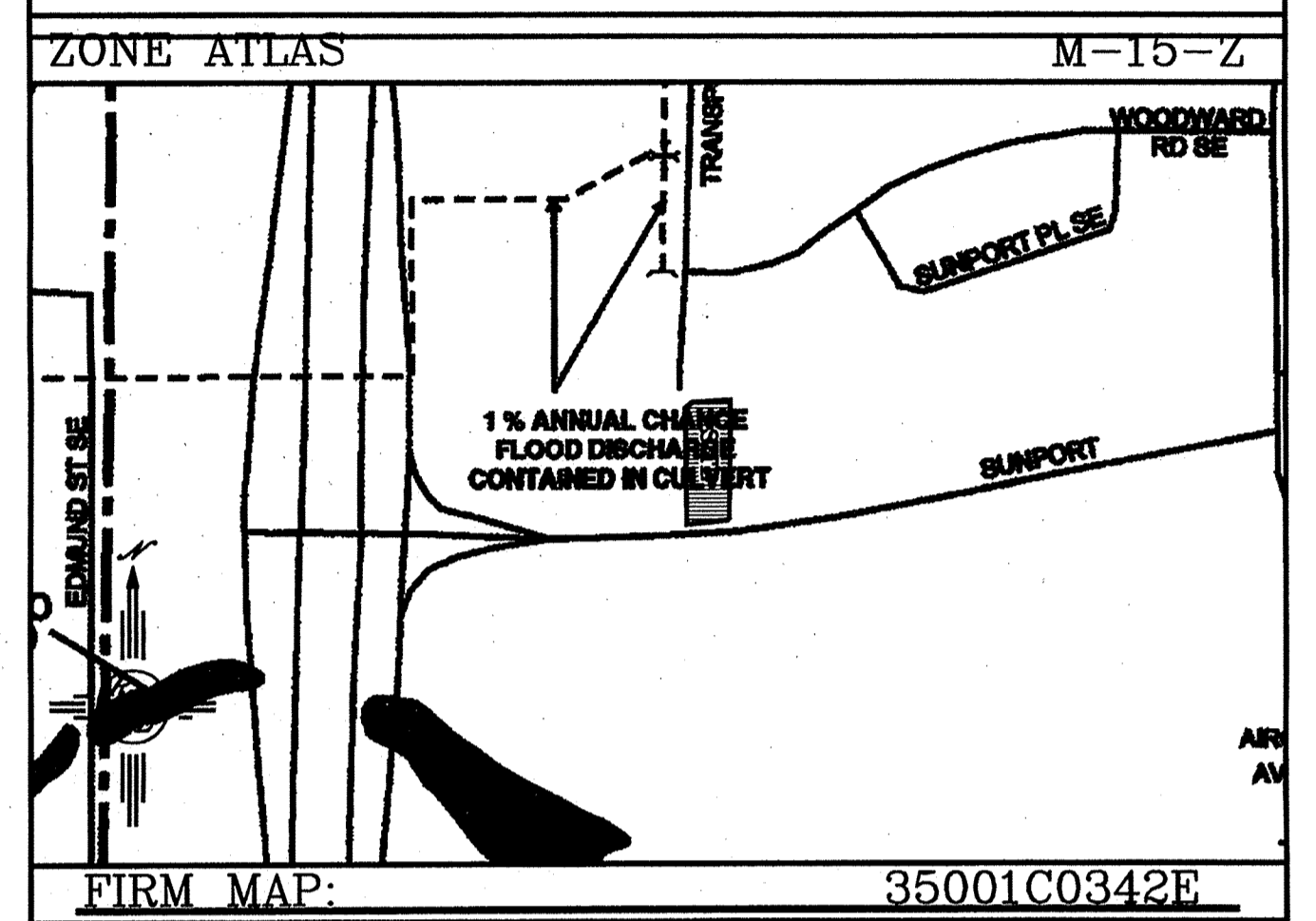
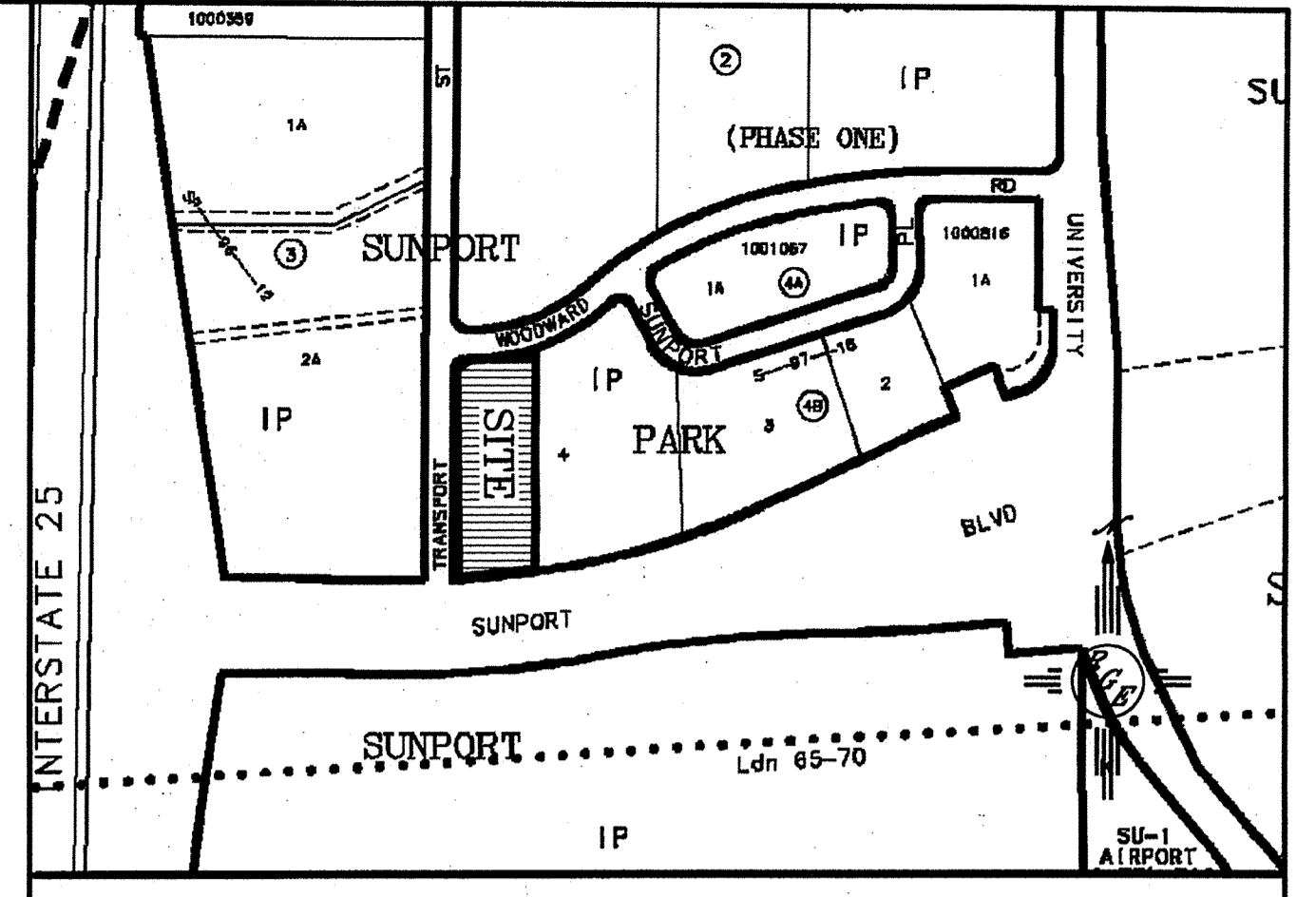
1. CONTRACTOR IS RESPONSIBLE FOR OBTAINING A TOPSOIL DISTURBANCE PERMIT PRIOR TO BEGINNING WORK.
2. CONTRACTOR IS RESPONSIBLE FOR MAINTAINING RUN-OFF ON SITE DURING CONSTRUCTION.
3. CONTRACTOR IS RESPONSIBLE FOR CLEANING ALL SEDIMENT THAT GETS INTO EXISTING RIGHT-OF-WAY.
4. REPAIR OF DAMAGED FACILITIES AND CLEANUP OF SEDIMENT ACCUMULATIONS ON ADJACENT PROPERTIES AND IN PUBLIC FACILITIES IS THE RESPONSIBILITY OF THE CONTRACTOR.
5. ALL EXPOSED EARTH SURFACES MUST BE PROTECTED FROM WIND AND WATER EROSION PRIOR TO FINAL ACCEPTANCE OF ANY PROJECT.



COBBLE SWALE DETAIL



CONCRETE ALLEY GUTTER DETAIL



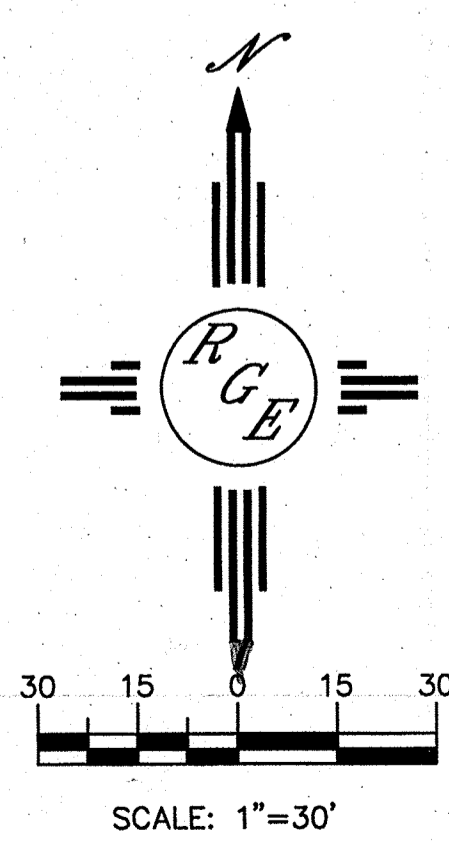
LEGAL DESCRIPTION:
 LOTS 4-A, BLOCK 4-B, SUNPORT PARK

- NOTES:**
1. ALL SPOT ELEVATIONS REPRESENT FLOWLINE ELEVATION UNLESS OTHERWISE NOTED.

LEGEND

- 5414 --- EXISTING CONTOUR
- 5415 --- EXISTING INDEX CONTOUR
- 5414 --- PROPOSED CONTOUR
- 5415 --- PROPOSED INDEX CONTOUR
- SLOPE TIE --- SLOPE TIE
- ▲ 4048.25 EXISTING SPOT ELEVATION
- ▲ 4048.25 PROPOSED SPOT ELEVATION
- BOUNDARY --- BOUNDARY
- CENTERLINE --- CENTERLINE
- RIGHT-OF-WAY --- RIGHT-OF-WAY
- PROPOSED CURB --- PROPOSED CURB
- EXISTING CURB --- EXISTING CURB
- WATER BLOCK --- WATER BLOCK
- PROPOSED RETAINING WALL (DESIGN BY OTHERS) --- PROPOSED RETAINING WALL (DESIGN BY OTHERS)
- HC RAMP 12:1 SLOPE MAX. HC RAMP 12:1 SLOPE MAX.
- BASIN LINE --- BASIN LINE
- 1' LANDSCAPE SWALE (SEE DETAIL THIS SHEET) --- 1' LANDSCAPE SWALE (SEE DETAIL THIS SHEET)

CAUTION:
 EXISTING UTILITIES ARE NOT SHOWN.
 IT SHALL BE THE SOLE RESPONSIBILITY
 OF THE CONTRACTOR TO CONDUCT ALL
 NECESSARY FIELD INVESTIGATIONS PRIOR
 TO ANY EXCAVATION TO DETERMINE THE
 ACTUAL LOCATION OF UTILITIES & OTHER
 IMPROVEMENTS.



ENGINEER'S SEAL	HAMPTON INN @ SUNPORT	DRAWN BY WCWJ
	GRADING AND DRAINAGE PLAN	DATE 3-21-13
		21226-LAYOUT-7-05-13
DAVID SOULE P.E. #14522	1606 CENTRAL AVENUE SE SUITE 201 ALBUQUERQUE, NM 87108 (505) 872-0899	SHEET #
		JOB # 21226