

Plat of
Lots 42-A, 44-A and 45-A, Block 5
Sunshine Addition
City of Albuquerque, Bernalillo County, New Mexico
July 2012

RECORDING STAMP

LOT 46, BLOCK 5
SUNSHINE ADDITION
(06/29/1921, 01-3)

FORMER LOT 45

Lot 45-A
AREA=0.1358 ACRES ±
5,977 SQ. FT. ±

FORMER LOT 44

Lot 44-A
AREA=0.1357 ACRES ±
5,970 SQ. FT. ±

FORMER LOT 43

Lot 42-A
AREA=0.1357 ACRES ±
5,969 SQ. FT. ±

FORMER LOT 41

LOT 40, BLOCK 5
SUNSHINE ADDITION
(06/29/1921, 01-3)

Alley
(16' ROW)

FORMED NO. 4 REPAIR
AT CORNER

FORMED REPAIR WITH
PLASTER FOR THE 700'S



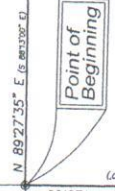
OFFICE LOCATION:
5571 McIntire Park Place, NE
Albuquerque, NM 87109
MAILING ADDRESS:
PRECISION SURVEYS, INC.
4500-1700, NW 8799
ALBUQUERQUE, NM 87109
866.642.8001 TOLL FREE
505.855.5700 PHONE
505.856.7900 FAX

INDEXING INFORMATION FOR COUNTY CLERK
OWNER: GREATER ALBUQUERQUE HABITAT
SECTION: 28 TOWNSHIP 10 N, RANGE 1 E.
SUBDIVISION: SUNSHINE ADDITION

Legend

- N 90°00'00" E (MEASURED BEARING AND DISTANCES)
- (N 90°00'00" E)
- RECORDS BOUNDARIES AND DISTANCES
- FORMED BOUNDARIES AND DISTANCES
- AS INDICATED
- BOUNDARIES AND DISTANCES WITH YELLOW
- FOUNDED CAP FOR THIS SET THIS SURVEY
- AS INDICATED
- AS INDICATED

ALBUQUERQUE PLATING
STANDARD AGES BRASS TABLET
1871 W. 11th ST. N. E. ALBUQUERQUE, N.M. 87102
1011 W. 11th ST. N. E. ALBUQUERQUE, N.M. 87102
ALBUQUERQUE PLATING
1111 W. 11th ST. N. E. ALBUQUERQUE, N.M. 87102
ALBUQUERQUE PLATING
1111 W. 11th ST. N. E. ALBUQUERQUE, N.M. 87102



High Street, S.E.
(60' ROW)

ALBUQUERQUE PLATING
STANDARD AGES BRASS TABLET
1871 W. 11th ST. N. E. ALBUQUERQUE, N.M. 87102
1011 W. 11th ST. N. E. ALBUQUERQUE, N.M. 87102
ALBUQUERQUE PLATING
1111 W. 11th ST. N. E. ALBUQUERQUE, N.M. 87102
ALBUQUERQUE PLATING
1111 W. 11th ST. N. E. ALBUQUERQUE, N.M. 87102



High Street, S.E.
(60' ROW)

