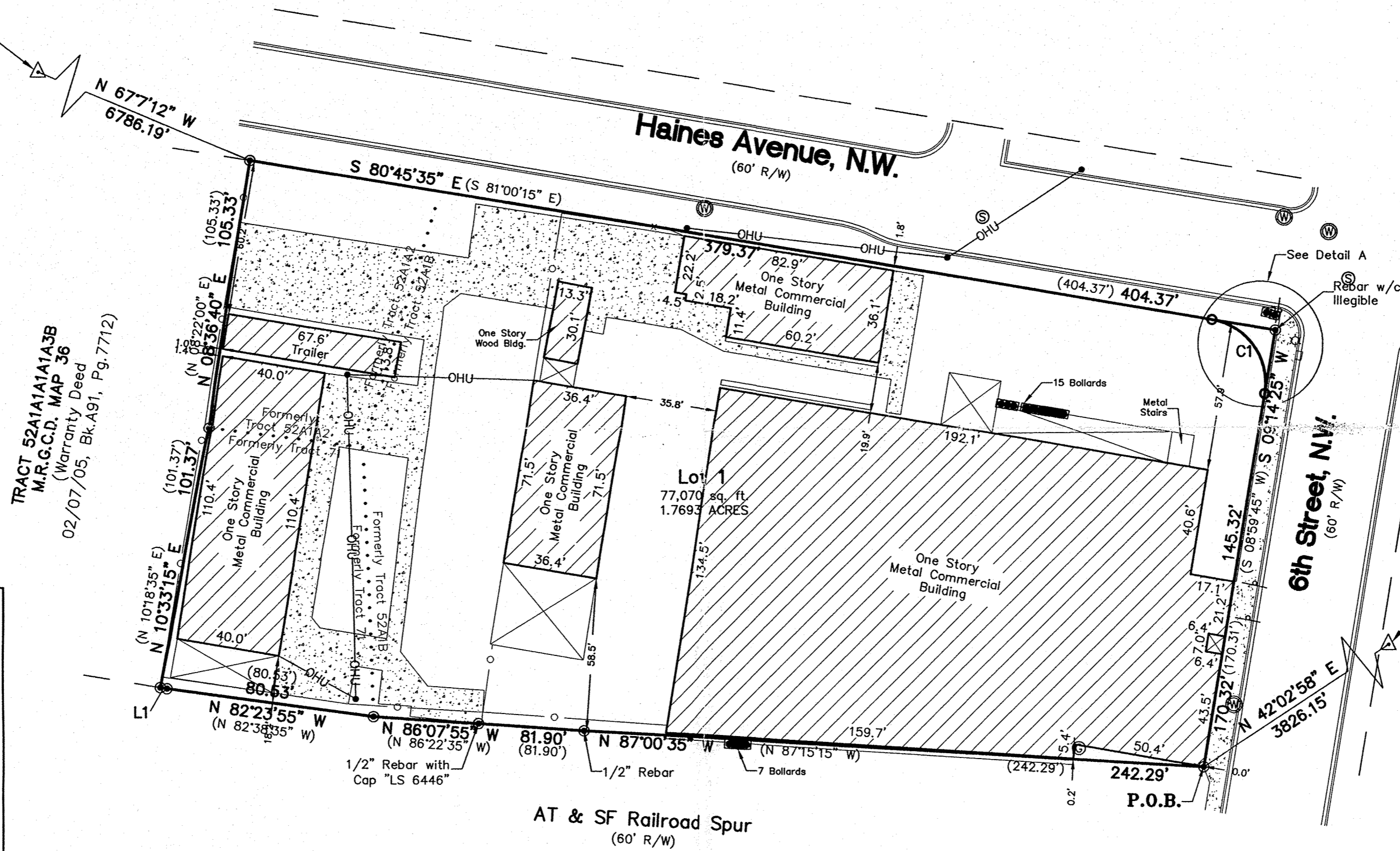


Site Sketch for
**Proposed Lot 1, Lands of
 Sandra & Carl Davidson**
 Comprising of
 Tracts 71, 52A1A2, and 52A1B
 MRGCD Map Number 36
 City of Albuquerque
 Bernalillo County, New Mexico
 August 2012

LINE TABLE		
LINE	LENGTH	BEARING
L1	2.65'(2.65')	N 80°45'55" W(N 81°00'35" W)

CURVE TABLE					
CURVE	LENGTH	RADIUS	DELTA	CHORD	CHORD BEARING
C1	39.27'	25.00'	90°0'0"	35.36'	N 35°45'35" W

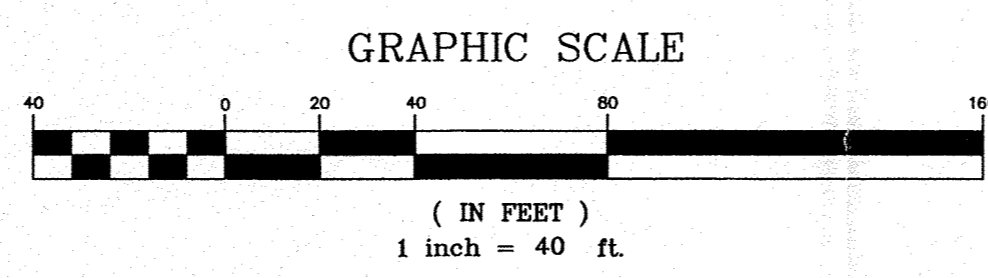
ACS Monument "7_H13"
 NAD 1983 CENTRAL ZONE
 X=1513953.442
 Y=1495777.837
 Z=4964.364 (NAVD 1988)
 G-G=0.999684760
 Mapping Angle=-0°14'35.56"



ACS Monument "A_438"
 NAD 1983 CENTRAL ZONE
 X=1523137.246
 Y=1495747.494
 Z=4975.350 (NAVD 1988)
 G-G=0.999681662
 Mapping Angle=-0°13'31.98"

Legend

- (N 90°00'00" E) RECORD BEARINGS AND DISTANCES PER PLAT OF RECORD
- N 90°00'00" E MEASURED BEARING AND DISTANCES
- FOUND BATHEY MARKER "LS 14271" UNLESS OTHERWISE INDICATED
- SET BATHEY MARKER "LS 14271"
- ⊙ WATER METER
- ⊠ TRANSFORMER
- ⊙ SANITARY SEWER MANHOLE
- SIGN
- ⊙ GAS METER
- UTILITY POLE
- CHAIN LINK FENCE
- ⊙ QWEST MANHOLE
- BOLLARD
- UTILITY PEDESTAL
- ☆ LIGHT POST
- OHU OVERHEAD UTILITY LINES
- ⊠ COVERED AREA
- ▨ CONCRETE AREA



CARTESIAN SURVEYS INC.

P.O. BOX 44414 RIO RANCHO, N.M. 87174
 Phone (505) 896-3050 Fax (505) 891-0244