



REVISIONS	
▲	Addendum #3 2-20-17
▲	Addendum #2 2-1-17

DRAWN BY	DAA
REVIEWED BY	DAA
DATE	November 18, 2016
PROJECT NO.	16-0078
DRAWING NAME	OVERALL SITE PLAN

SITE INFORMATION

LEGAL DESCRIPTION
 060N M T ADD LOTS 1 AND 2, 18NMT3 X 4 BLK 60 FRACTIONAL OF LOT 3 X 4 BLK 18 RAYNOLDS ADDITION, LOTS 5 & 6 BLK 60 NEW MEXICO TOWN CO ORIGINAL TOWNSITE & LOTS 5 & 6 BLK 18, 018 RAYNOLDS L1S 7X20XPORT LTT BLK 60 NMT ADDITION, 009 018 RAYNOLDS X LOT 10, 011 018 RAYNOLDS N PORT L11 L12, 018 RAYNOLDS ADDITION SO PORT OF LOTS 11X12

SURVEY CONTROL MONUMENT DATA
 Albuquerque Control Survey Monument "17_J14"
 New Mexico State Plane Coordinates, Central
 Zone (NAD83) as published:
 Y= 1,486,866.78
 X= 1,519,419.32
 Ground to grid factor= 0.99983611
 Delta Alpha= -00°13'35"
 Elevation= 4957.484 (NAVD88)

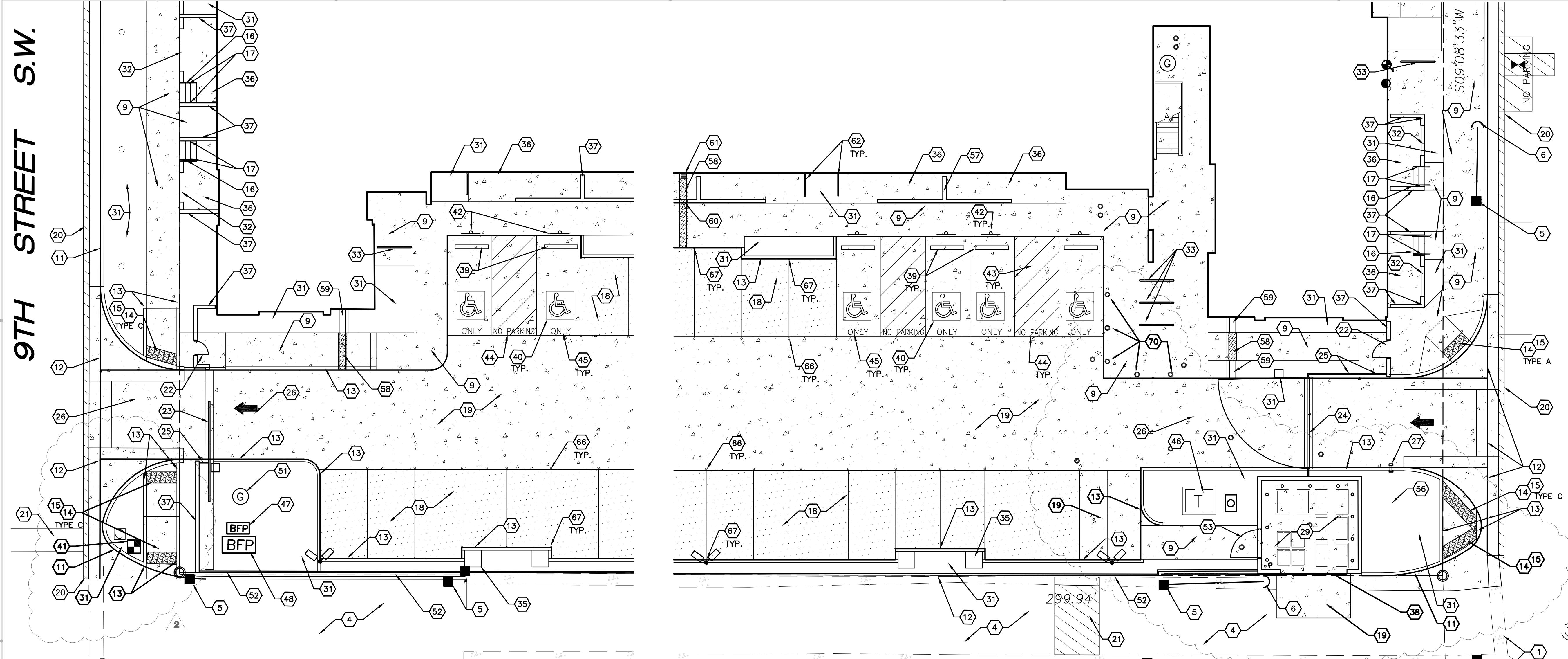
GENERAL SHEET NOTES

- SEE CIVIL PLANS FOR ADDITIONAL GRADING, DRAINAGE AND UTILITY INFORMATION.
- ALL FIXTURES AND DESIGN SHALL COMPLY WITH THE NEW MEXICO NIGHT SKY PROTECTION ACT AND THE COA ZONING CODE SECTION 14-16-3-9 AREA LIGHTING REGULATIONS.
- LIGHTING WITHIN THE PUBLIC RIGHT-OF-WAY SHALL BE SUBJECT TO THE STANDARDS AND REVIEW OF PNM, UNLESS MAINTENANCE FOR THE RIGHT-OF-WAY LIGHTING IS THE FULL RESPONSIBILITY OF OTHER PARTIES.
- STANDARD PARKING SPACE IS 8'-0" x 15'-0".
- COMPACT PARKING SPACE IS 8'-0" x 15'-0".
- SURFACE FEATURES RELATED TO UTILITIES ARE SHOWN FOR CLARITY. SEE UTILITY SHEET C301 FOR CONSTRUCTION NOTES.

SHEET KEYED NOTES

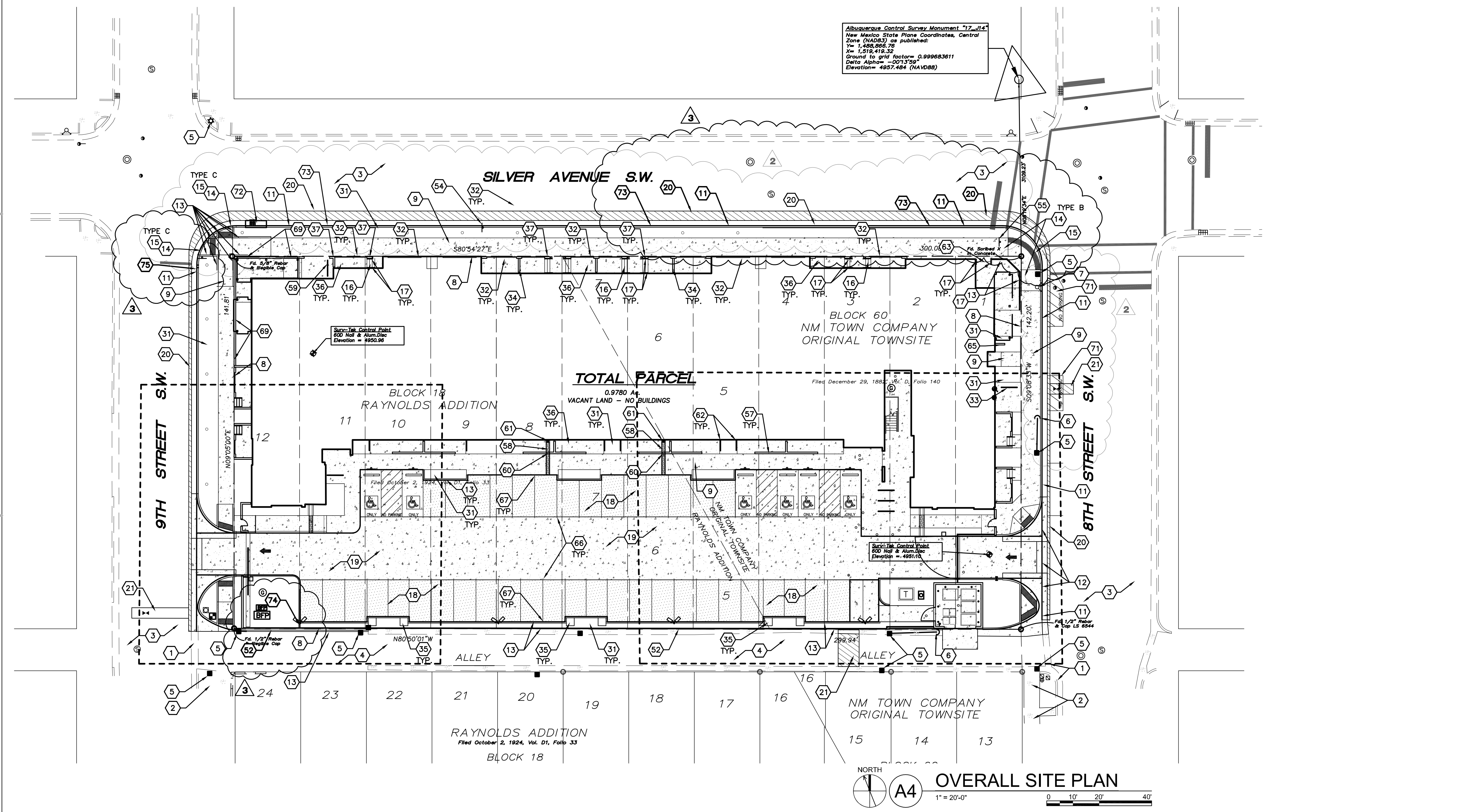
- EXISTING CURB, GUTTER, AND STREET TO REMAIN
- EXISTING SIDEWALK TO REMAIN
- EXISTING ASPHALT TO REMAIN
- EXISTING PAVED ALLEY
- EXISTING POWER POLE
- EXISTING GUY WIRE TO REMAIN
- EXISTING FIRE HYDRANT TO REMAIN
- PROPERTY LINE
- CONCRETE SIDEWALK, RE: B4/C501
- CONCRETE JOINT PATTERN, RE: B4/C501
- STANDARD CONCRETE CURB AND GUTTER, PER COA STD DWG 2415A
- CONCRETE VALLEY GUTTER, PER COA STD DWG 2420
- CONCRETE HEADER CURB, PER COA STD DWG 2415B
- CONCRETE CURB RAMP, RE: A1/C501
- DETECTABLE WARNING SURFACE, RE: A3/C501
- CONCRETE STAIR, RE: E5/C502
- METAL HANDRAIL, RE: A3/C502
- GRAVEL PARKING LOT WITH GRAVEL PAVE 2, RE: E4/C501
- CONCRETE PAVEMENT, RE: E3/C501
- MINIMUM 12" WIDE STRIP OF ASPHALT PER COA STD DWG 2465
- UTILITY PATCH ASPHALT PER COA STD DWG 2465
- CONTROLLED ACCESS MAN GATE, RE: A6/C503
- 16" WIDE CONTROLLED ACCESS SLIDING GATE, RE: E4/C503
- 16" WIDE CONTROLLED ACCESS SWING GATE, RE: E4/C503
- DECORATIVE WROUGHT IRON FENCE 6' TALL, RE: D1/C503
- LOOP DETECTOR PER ELECTRICAL PLANS
- KEY PAD FOR ACCESS CONTROL GATE PER ELECTRICAL PLANS
- DECORATIVE MASONRY PRIVACY WALL, 1'-8" HIGH FROM FINISH FLOOR
- REFUSE AREA WITH MASONRY ENCLOSURE, SEE ENLARGED PLAN ON SHEET C504 AND SECTION C2/C504
- ADA ACCESSIBLE CONCRETE RAMP, RE: B4/C501
- LANDSCAPE AREA
- METAL PICKET FENCE 4'-0" TALL, COLOR: DARK GRAY, ALSO REFER TO AE201, AE202, AE203, AND SPEC SECTION 05-213
- BICYCLE RACK, 7 BIKE CAPACITY, RE: D3/C503
- 4'-8" TALL BURNISHED CLOCK CMU SCREEN WALL, SIMILAR TO DETAIL D1/C502 WITH TOP COURSE TO ALIGN WITH 6' TALL SECTION ALONG STREET EDGE
- 2'X2' GABION BASKET, FILLED WITH 3" COBBLES, TOP OF BASKET SET AT TOP OF PARKING LOT CURB
- CONCRETE PATIO SLAB, 3/8" SLOPE AWAY FROM BUILDING AT 1/2" PER FOOT
- 6' TALL BURNISHED BLOCK CMU SCREEN WALL, RE: C5/C502
- REFUSE ENCLOSURE GATES, RE: A4/C502
- CONCRETE PARKING BLOCK, RE: D3/C501
- RESERVED PARKING SYMBOL, RE: E3/C501
- DOMESTIC WATER METER, SEE SHEET C301
- VAN ACCESSIBLE RESERVED PARKING SIGN AND POST, RE: E5/C501 AND A1/C502
- STRIPED UNLOADING ZONE FOR RESERVED PARKING STALLS
- 12" TALL WHITE LETTERS "NO PARKING"
- 12" TALL WHITE LETTERS "ONLY"
- TRANSFORMER, SEE ELECTRICAL PLANS
- IRRIGATION BACKFLOW PREVENTER AND INSULATED ENCLOSURE, SEE SHEET C301 FOR CONSTRUCTION DETAILS
- DOMESTIC WATER BACKFLOW PREVENTER AND INSULATED ENCLOSURE, SEE SHEET C301 FOR CONSTRUCTION DETAILS
- 4" WIDE WHITE TRAFFIC MARKING
- 4" STEEL BOLLARD, RE: D4/C502
- NATURAL GAS METER, SEE SHEET C301 FOR CONSTRUCTION DETAILS
- 8" TALL HEADER CURB TO CONFINE DRAINAGE AND 6" TALL AMERISTAR DECORATIVE WIRE FENCE, RE: D4/C502
- 6" WIDE PEDESTRIAN GATE SIMILAR TO DETAIL A5/C502, FRAME ATTACHED IS CMU WALL, LATCH WITH PAD LOCK, PERFORATED PANEL NOT REQUIRED
- EXISTING 18 MPH SPEED LIMIT SIGN TO REMAIN
- EXISTING STOP SIGN TO REMAIN
- 6'-8" TALL CMU SCREEN WALL AROUND REFUSE ENCLOSURE, RE: D3/C502
- 3'-4" TALL BURNISHED BLOCK CMU SCREEN WALL, RE: D5/C502
- 12" WIDE SIDEWALK CURBVERT, RE: E3/C502
- 12" WIDE CONCRETE RUNDOWN, RE: A4/C502
- PROVIDE 8" TALL X 12" WIDE OPENING IN BLOCK WALL FOR SIDEWALK CULVERT
- PROVIDE 12" X 12" BAR GRATE AT SIDEWALK CULVERT UNDER DOWNSPOUT
- LANDSCAPING SCREEN, SEE SHEET LP101
- CONCRETE STAIR WITH REFLECTIVE METAL NOSING SIMILAR TO DETAIL B3/C502
- NOT USED
- WALL MOUNTED SIGN, SEE SHEETS AE201 AND AE203, ADDITIVE ALTERNATE #1
- PROVIDE 4" ROUND REFLECTOR ATTACHED TO THE CONCRETE AS PARKING SPACE INDICATOR
- PROVIDE 4" ROUND REFLECTOR ATTACHED TO THE FACE OF THE HEADER CURB AS PARKING SPACE INDICATOR
- LIGHT POLE AND FOUNDATION, SEE ELECTRICAL SHEET ES101
- 16" TALL, 8" WIDE BONCO WALL, RE: E1/C501
- SPHERE BOLLARD, RE: B6/C504
- PROVIDE STRIPING AT WALL INDICATOR VALVE, FIRE DEPARTMENT CONNECTION AND FIRE HYDRANT, VERIFY EXACT LIMITS WITH FIRE DEPARTMENT PRIOR TO APPLICATION, INCLUDE 12" TALL RED NO PARKING LETTERS ON ASPHALT AND 6" TALL "NO PARKING FIRE LANE" ON FACE OF CURB
- TYPE "A" STORM DRAIN CATCH BASIN PER COA STD DWG 2201, SEE UTILITY SHEET C301 FOR MORE INFORMATION
- 6" TALL RED "NO PARKING FIRE LANE" ON FACE OF CURB PER FIRE DEPARTMENT REQUIREMENTS
- HEADER CURB UP TO 12" TALL ABOVE GRADE, SEE SHEET C201 FOR TOP OF CURB AND FLOW LINE INFORMATION, HEADER CURB SIMILAR TO DETAIL A4/C501
- PROVIDE 12" WIDE OPENING IN CURB TO ALLOW DRAINAGE FROM STREET TO ENTER LANDSCAPING STRIP.

VICINITY MAP



D1 ENLARGED PLAN 1" = 10'-0"

D2 ENLARGED PLAN 1" = 10'-0"



A4 OVERALL SITE PLAN 1" = 20'-0"