

CASE NO. _____

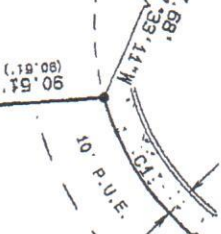
"SKETCH"

FOR VACATION OF PUBLIC EASEMENT

RANCHO LADERA RD. NE
R.O.W. VARIES
CUL-DE-SAC, R=40.00'

(BASIS OF BEARINGS)
N89°45'30"W
632.02'
Q.M.N. #7718

CURVE TABLE
RAD. CURVE DELTA
R=40.00' LENGTH L=24.51' Δ=24.51°
(R=40.00' L=24.51' Δ=24.51°)



Lot 15-P1, Block 2
BUENA VISTA ESTATES UNIT 2
BK 97C, FOLIO 314

LOT 20-P1
0.1897 AC
8,261.42 SQ FT

LOT 21-P1, BLOCK 2
BUENA VISTA ESTATES UNIT 2
BK 97C, FOLIO 314

N03°50'28"W
(N03°50'28"W)

116.481'
(116.48')

10' P.U.E.
TO BE VACATED WITH
THE FILING OF THIS PLAT

N89°44'55"W
(N89°44'55"W)

N00°14'30"E
(N00°14'30"E)
25.27'
10.9'

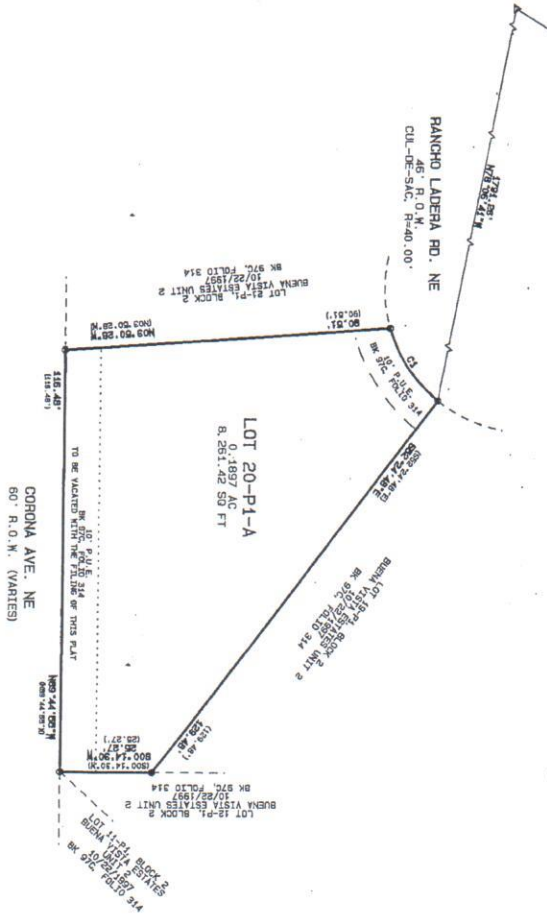
LOT 15-P1, BLOCK 2
BUENA VISTA ESTATES UNIT 2
BK 97C, FOLIO 314

CORONA AVE. NE
60' R.O.W. (VARIES)

LOT TWENTY-P-ONE (20-P1) IN BLOCK NUMBERED TWO (2)
OF THE PLAT FOR BUENA VISTA ESTATES UNIT II,
ALBUQUERQUE, NEW MEXICO, BEING THE SAME AS
AND DESIGNATED ON THE PLAT THEREOF FILED IN THE
OFFICE OF THE COUNTY CLERK OF BERNALILLO COUNTY,
NEW MEXICO ON OCTOBER 22, 1997 IN PLAT BOOK 97C,
FOLIO 314.

PLAT OF
 LOT 20-P1-A, BLOCK 2
 BUENA VISTA ESTATES UNIT 2
 PROJECTED SECTION 13, T 14 N, R 3 E, NMPM, ELENA GALLEGOS GRANT
 CITY OF ALBUQUERQUE, BERNALILLO COUNTY, NEW MEXICO
 JUNE, 2013

N.C.S. MONUMENT
 N-11-187-524
 S-11-187-524
 GRID FACTOR: 0.99954565
 NAD 83 DATUM
 NAD 83 ELEVATION: 5203.2



CURVE	RADIUS	LENGTH	DELTA	CHORD	BEARING
51	160.897	161.813	54.127	160.187	109.187

© SET 2/2013 RENAISSANCE SURVEYING



243-1212 OFFICE
 240-0833 FAX

LOT-1231

SHEET 2 OF 2

