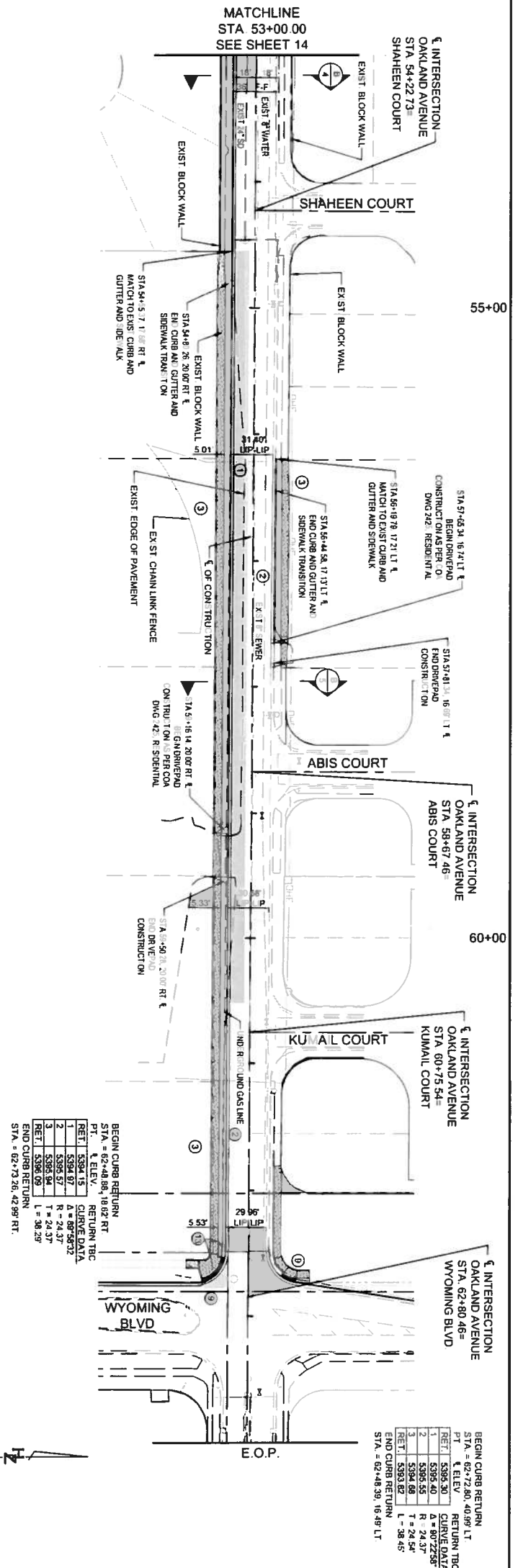


OAKLAND AVENUE N.E.



BEGIN CURB RETURN
 STA = 62+48.89, 18.02 RT
 PT. & ELEV. RETURN TBC
 RET. 5394.15 CURVE DATA
 1 5394.87 A = 89°59'32"
 2 5395.57 R = 24.37'
 3 5395.94 L = 24.37'
 RET. 5395.09 L = 36.29'
 END CURB RETURN
 STA = 62+73.26, 42.99 RT

BEGIN CURB RETURN
 STA = 62+72.80, 40.99 LT
 PT. & ELEV. RETURN TBC
 RET. 5395.30 CURVE DATA
 1 5395.40 R = 24.37'
 2 5395.55 L = 24.37'
 RET. 5394.89 L = 36.29'
 END CURB RETURN
 STA = 62+40.50, 16.49 LT

- CONSTRUCTION NOTES**
- CONSTRUCT MAJOR LOCAL PAVEMENT SECTION IN ACCORDANCE WITH COA STD DWG 2408B. SEE DETAIL C ON SHEET 15.
 - CONSTRUCT STANDARD CURB & GUTTER IN ACCORDANCE WITH COA STD DWG 2415A.
 - CONSTRUCT 6" PCC SIDEWALK AT STANDARD SETBACK IN ACCORDANCE WITH COA STD DWG 2430.
 - NEAT CUT EXISTING PAVEMENTS.
 - CONSTRUCT 50' CROWN TRANSITION IN ACCORDANCE WITH COA STD DWG 2401.
 - CONSTRUCT PCC VALLEY GUTTER IN ACCORDANCE WITH COA STD DWG 2420.
 - CONSTRUCT 30" WIDE PCC DRIVEPAD IN ACCORDANCE WITH COA STD DWG 2425.
 - CONSTRUCT SIDEWALK AROUND POWER POLES IN ACCORDANCE WITH COA STD DWG 2431.
 - CONSTRUCT PCC CURB ACCESSIBLE RAMP IN ACCORDANCE WITH COA STD DWG 2441, CASE 1.
 - TRANSITION SIDEWALK TO BACK OF CURB IN ACCORDANCE WITH COA STD DWG 2442.
 - CONSTRUCT STORM DRAIN INLET DOUBLE 'C' IN ACCORDANCE WITH COA STD DWG 2205.
 - USE STORM ALTERNATE GRATE IN ACCORDANCE WITH COA STD DWG 2221, MODIFY BASE TO DISCHARGE FROM THE SIDE.
 - CONSTRUCT STORM DRAIN INLET DOUBLE 'C' IN ACCORDANCE WITH COA STD DWG 2205.
 - USE STORM ALTERNATE GRATE IN ACCORDANCE WITH COA STD DWG 2221.
 - RELOCATE EXISTING SIGN.

HUITT-ZOLLARS
 6000 American Parkway, Suite 200
 Albuquerque, New Mexico 87109
 Phone (505) 863-8114 Fax (505) 863-5022

CITY OF ALBUQUERQUE
 DEPARTMENT OF MUNICIPAL DEVELOPMENT
 OAKLAND AVENUE
 ROADWAY PLAN AND PROFILE
 STA. 53+00.00 TO STA. 64+00.00

Design Review Committee City Engineer

City Project No. 7625 91 Zone Map No. C-18 & 19-Z Sheet 15 of 15

NO	DATE	REMARKS	BY
REVISIONS			
DESIGN			
DESIGNED BY: KLS	DATE: 05-12		
DRAWN BY: KLS	DATE: 05-12		
DWG NAME: 19_PP.dwg	PROJ # 17-0835-06		
CHECKED BY: SAE	DATE: 05-12		

ENGINEER'S SEAL

[Signature]
 2/2/13

SURVEY INFORMATION

NO.	DATE	FIELD NOTES
		FOUND MONUMENT "10 C18"
		A CITY OF ALBUQUERQUE 3 1/4" ALUM/NUM DISC RIVETED TO AN ALUM/NUM POST
		0.1 FEET ABOVE GROUND AND IS STAMPED "10-C18 1985"
		NORTHING = 1524123.885
		EASTING = 1542565.263
		ELEVATION IS 5222.000 (NAVD 1988)

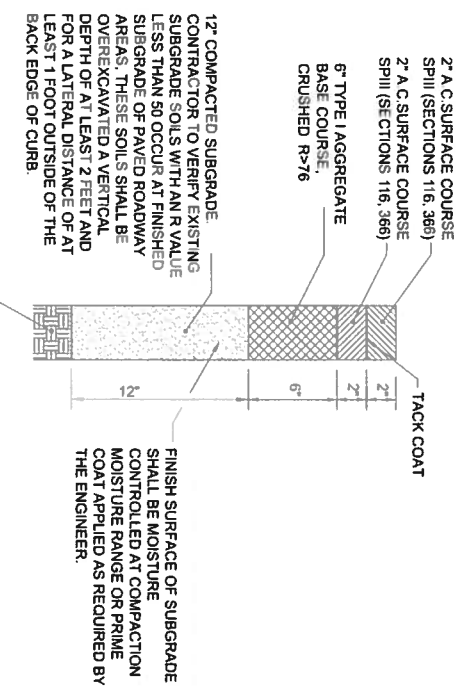
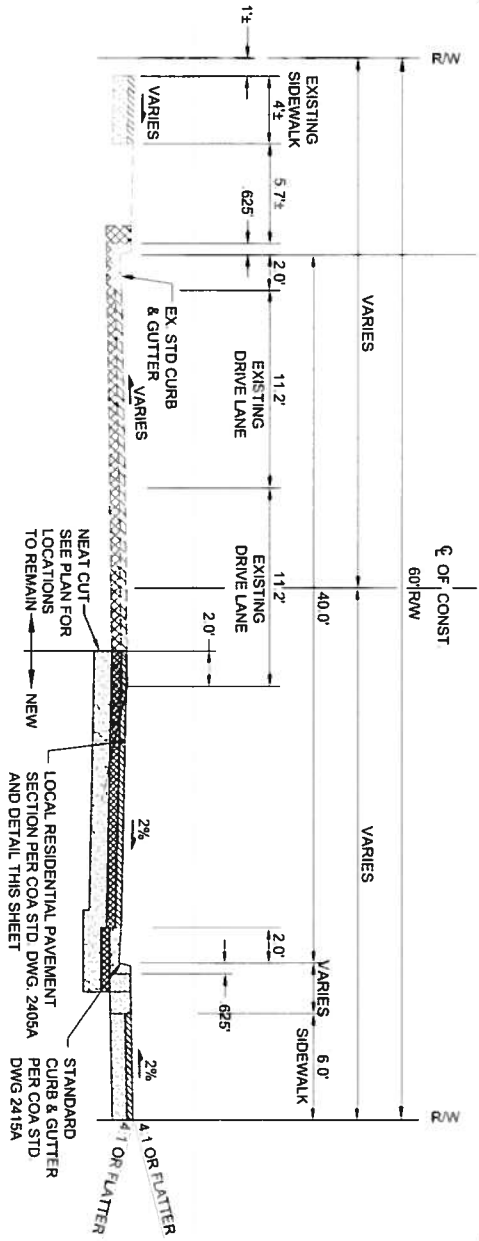
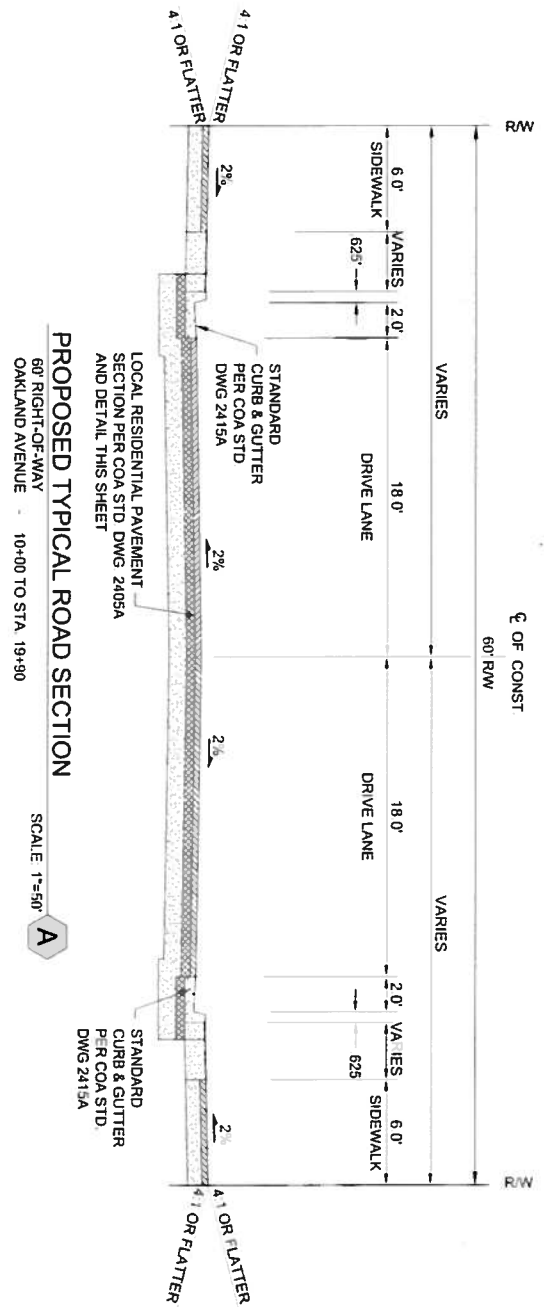
BENCH MARKS

NO.	DATE	FIELD NOTES
		FOUND MONUMENT "10 C18"
		A CITY OF ALBUQUERQUE 3 1/4" ALUM/NUM DISC RIVETED TO AN ALUM/NUM POST
		0.1 FEET ABOVE GROUND AND IS STAMPED "10-C18 1985"
		NORTHING = 1524123.885
		EASTING = 1542565.263
		ELEVATION IS 5222.000 (NAVD 1988)

AS BUILT INFORMATION

CONTRACTOR	DATE
WORK PERFORMED BY	DATE
INSPECTOR'S ACCEPTANCE BY	DATE
FIELD VERIFICATION BY	DATE
DRAWING CHECKED BY	DATE
RECORDED BY	DATE
NO.	DATE

MICRO-FILM INFORMATION



NOTE:
 NO IMPROVEMENTS REQUIRED
 STA. 26+50 TO STA. 29+80 AND STA. 38+03 TO STA. 54+55

100% SUBMITTAL

DESIGNED BY: SAE DATE: 05-12 DRAWN BY: KLS DATE: 05-12 DWG NAME: 5_PTypSec.dwg PROJ #: 17 0835 06 CHECKED BY: SAE DATE: 05 12		ENGINEER'S SEAL 		SURVEY INFORMATION FIELD NOTES NO. BY DATE		BENCH MARKS FOUND MONUMENT "10, C18" A CITY OF ALBUQUERQUE 3 1/4" ALUMINUM DISC RIVETED TO AN ALUMINUM POST 0.1 FEET ABOVE GROUND AND IS STAMPED "10 C18 1985". NORTHING = 1524123.885 EASTING = 1542565.263 ELEVATION IS 5222.090 (NAVD 1988)		AS BUILT INFORMATION CONTRACTOR DATE WORK STOPPED BY DATE INSPECTOR'S ACCEPTANCE BY DATE FIELD VERIFICATION BY DATE DRAWINGS CORRECTED BY DATE MICRO-FILM INFORMATION RECORDED BY DATE NO.	
REVISIONS NO. DATE REMARKS BY		DESIGNED BY: SAE DATE: 05-12 DRAWN BY: KLS DATE: 05-12 DWG NAME: 5_PTypSec.dwg PROJ #: 17 0835 06 CHECKED BY: SAE DATE: 05 12		DEPARTMENT OF MUNICIPAL DEVELOPMENT OAKLAND AVENUE PROPOSED TYPICAL SECTIONS		CITY OF ALBUQUERQUE DEPARTMENT OF MUNICIPAL DEVELOPMENT OAKLAND AVENUE PROPOSED TYPICAL SECTIONS		DESIGN REVIEW COMMITTEE City Engineer DATE City Engineer DATE City Engineer DATE City Engineer DATE	
City Project No. 7625.91 Zone Map No. C-18 & 19-Z Sheet 5 OF 15		Original by: HUIIT-ZOLLARS Huiit-Zollars, Inc. 6501 American Parkway, Suite 200 Albuquerque, New Mexico 87113 Phone (505) 883-9118 Fax (505) 883-9022		City Project No. 7625.91 Zone Map No. C-18 & 19-Z Sheet 5 OF 15		City Project No. 7625.91 Zone Map No. C-18 & 19-Z Sheet 5 OF 15		City Project No. 7625.91 Zone Map No. C-18 & 19-Z Sheet 5 OF 15	