

PROJECT NUMBER: 1002881

Application Number: 10 DPB - 70047

Is an Infrastructure List required? ( ) Yes (✓) No If yes, then a set of approved DRC plans with a work order is required for any construction within Public Right-of-Way or for construction of public improvements.

DRB SITE DEVELOPMENT PLAN SIGNOFF APPROVAL:

Reginald M. M... Traffic Engineering, Transportation Division Date 2/28/18
ABCWUA Date 2/28/18
Parks and Recreation Department Date 2/28/18
City Engineer/Hydrology Date 2/28/18
Code Enforcement Date 2/28/18

\* Environmental Health Department (conditional) Date

Solid Waste Management Date 2/28/18

DRB Chairperson, Planning Department Date

\* Environmental Health, if necessary

DEVELOPMENT DATA

NET SITE AREA: 11.6221 ACRES (506,259 S.F.)

ZONING: SU-2

BUILDING HEIGHT: 38 FEET

DENSITY: 19.96 DU/ACRE

SETBACKS PROVIDED:

REAR (N) 15' SIDE (W) 15' FRONT (S) 59' SIDE (E) 59'
PARKING 22' 5' 15' 5'

MINIMUM ON-LOT USABLE OPEN SPACE REQUIRED AND PROVIDED:
TOTAL 84 4 104 40 15 232

NOTES:
1. ALL GROUND FLOOR UNITS ARE TO MEET ANSI TYPE 'B' UNIT REQUIREMENTS.
2. 2% OF TOTAL UNITS ARE REQUIRED TO MEET ANSI TYPE 'A' (232x402=4.64 PROVIDED: 5)

LIGHTING LEGEND

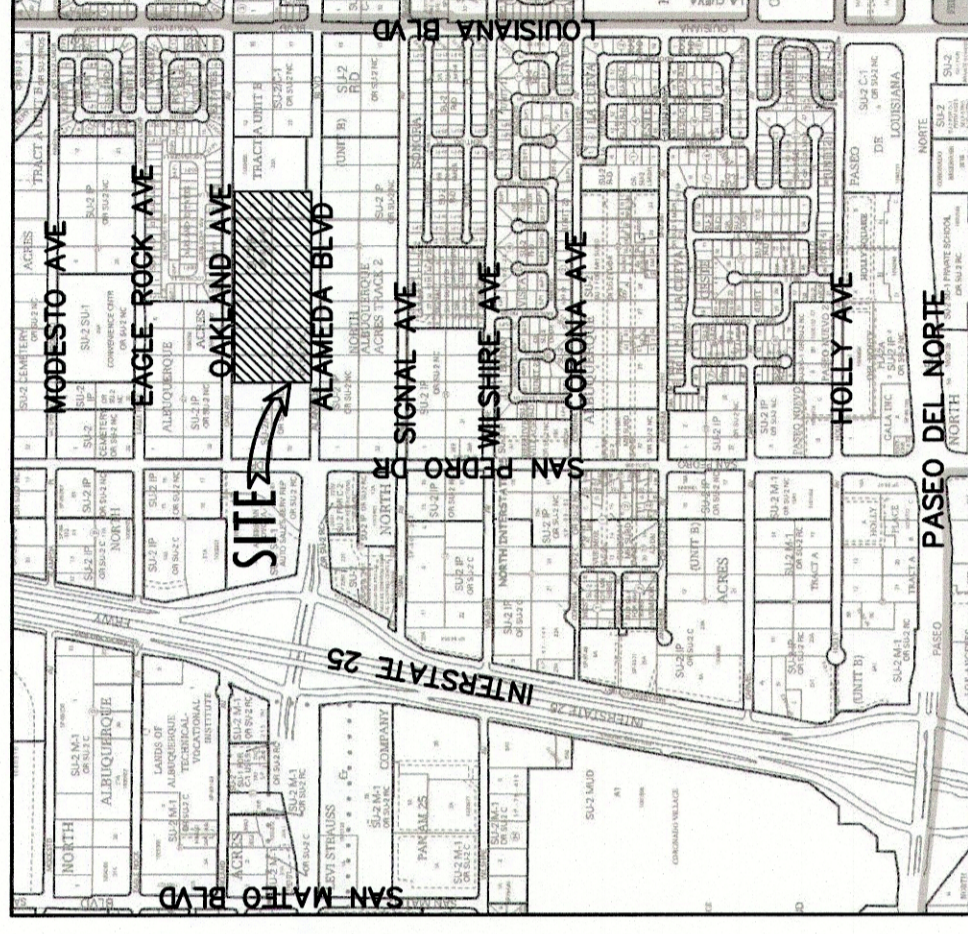
- TYPE 'SA': 18' TALL POLE LIGHT.
TYPE 'SB': 12' TALL POLE LIGHT.
TYPE 'SC': 7' TALL POLE LIGHT.
TYPE 'SD': LED UPLIGHT.
TYPE 'SE': CARPORT LIGHT.
TYPE 'SF': WALL SCONCE AT 6'-6" B.O.F. ADA COMPLIANT.
TYPE 'SG': 18' TALL POLE LIGHT.

Table with columns: UNIT MIX (A1, A2, B1, C1, UNITS), NO. TOTAL BLDG UNITS, PARKING SPACE REQUIREMENTS (UNIT A1, A2 < 1,000 SF, etc.), and Total Parking Spaces Required.

VICINITY MAP



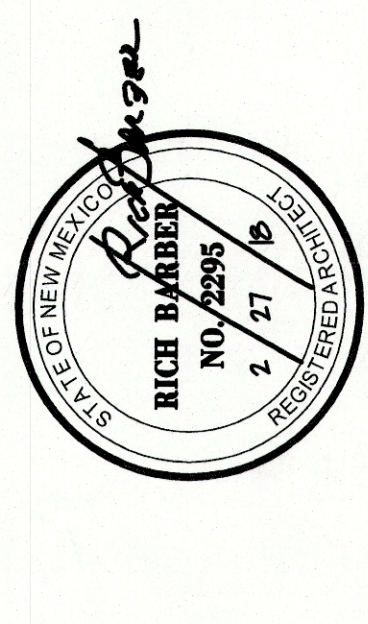
NOT TO SCALE



LEGACY NAA APARTMENTS
SAN PEDRO AND ALAMEDA
Albuquerque, New Mexico



WorldHQ@ORBAR.ch.com



KEYNOTES

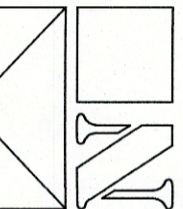
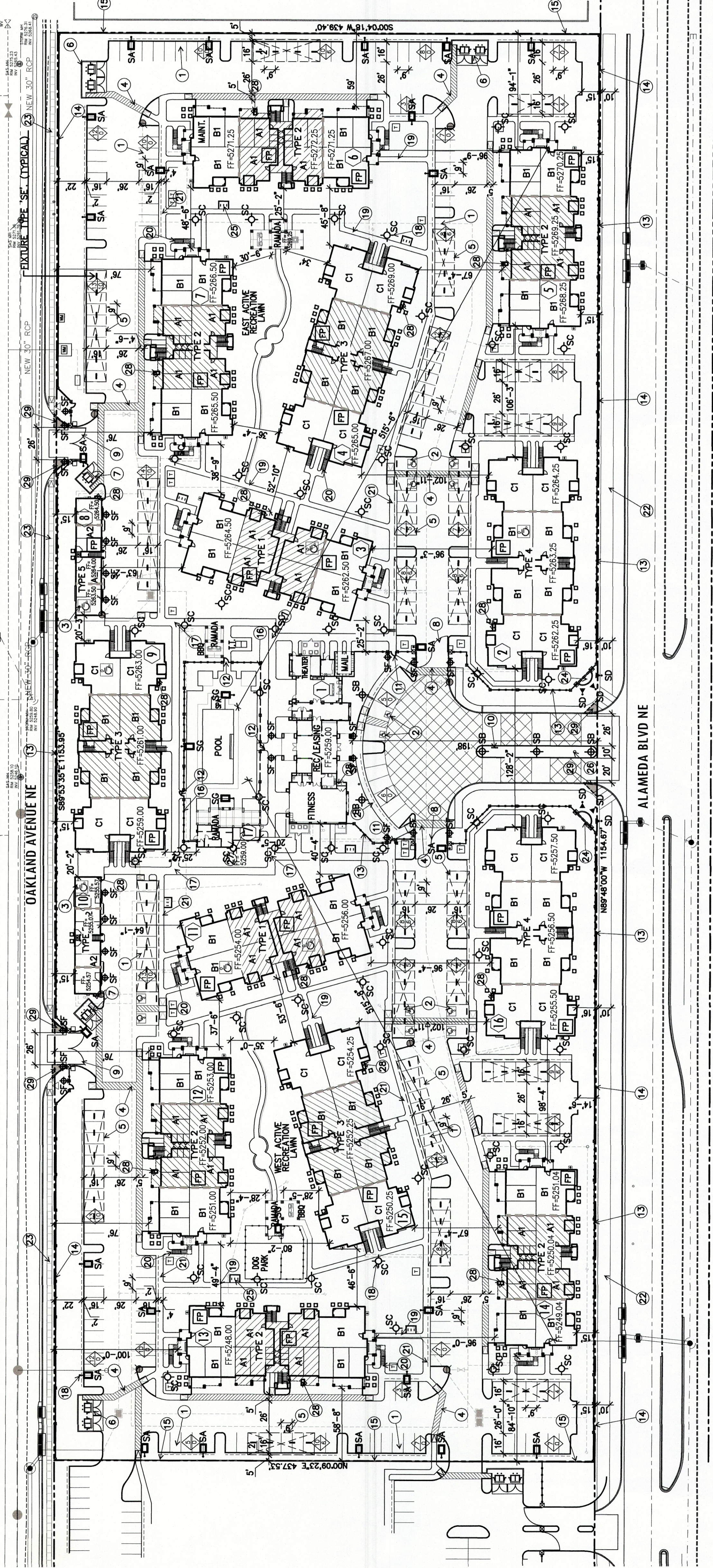
- 1. 6'-6" PARKING SPACE WITH 2' OVERHANG, TYPICAL. SEE DETAIL 16/A1.21.
2. 11'-6" ACCESSIBLE PARKING SPACE WITH 2' OVERHANG. SEE DETAIL 05/A1.20.
3. ACCESSIBLE DRIVEWAY CROSSING MARKING. SEE DETAIL 06/A1.20.
4. ACCESSIBLE DRIVEWAY CROSSING MARKING. SEE DETAIL 06/A1.20.
5. STRUCTURE SETBACK FROM CURB. SEE DETAIL 13/A1.20.
6. DOUBLE TRASH ENCLOSURE SURROUNDED BY 6' SINGLE TRASH ENCLOSURE SURROUNDED BY 6' DETAIL 07/A1.20.
7. SINGLE TRASH ENCLOSURE SURROUNDED BY 6' DETAIL 07/A1.20.
8. ELECTRONIC ENTRY GATE TO BE EQUIPPED FOR FIRE DEPARTMENT ACCESS. SEE DETAIL 28/A1.21.
9. RESIDENT ONLY REMOTE CONTROL ENTRY GATE TO BE EQUIPPED FOR FIRE DEPARTMENT ACCESS. SEE DETAIL 17/A1.21.
10. GATE CONTROL BOX AND SITE DIRECTORY MAP SEE DETAIL 17/A1.21. PROVIDE KNOX BOX FOR FIRE DEPARTMENT ACCESS.
11. PEDESTRIAN ENTRY GATE. SEE DETAIL 23/A1.21.
12. POOL GATE. SEE DETAIL 24/A1.21.
13. FENCING AT RAMADA PERIMETER FENCE. SEE DETAIL 27/A1.21.
14. CMU WROUGHT IRON COMBO PERIMETER FENCE. SEE DETAIL 27/A1.21.
15. CMU PERIMETER WALL. SEE DETAIL 16/A1.21.
16. WROUGHT IRON POOL FENCE. SEE DETAIL 19/A1.21.
17. TO PUBLIC WALKWAY CONNECTING TO EACH BUILDING AND 18. STE LIGHTING - SEE LIGHTING LEGEND.
19. 4' SIDEWALK, TYPICAL ON SITE.
20. 3'-6" SIDEWALK AT STAIR APPROACH, TYPICAL.
21. 6' SIDEWALK, TYPICAL AT PARKING. SEE DETAIL 10/A1.21.
22. 10' MULTI-USE ASPHALT TRAIL, 4' FROM STREET CURB AT ALAMEDA BLVD.
23. 6' SIDEWALK DETACH 6' FROM STREET CURB AT OAKLAND AVE.
24. MONUMENT SIGN. SEE DETAIL 29/A1.21.
25. MONUMENT SIGNING RACK FOR 6 BICYCLES. SEE DETAIL 30/A1.21.
26. FLAG POLE.
27. POOL EQUIPMENT AT POOL RAMADA.
28. FIRE RISER LOCATION. SEE BUILDING PLANS. ALL BUILDINGS SHALL HAVE PIV GROUNDING WILL NOT INTERFERE WITH CLEAR SIGN REQUIREMENTS.
29. THEREFORE, SIGNS, WALLS, TREES, AND SHRUBBERY BETWEEN 3 AND 8 FEET TALL (AS MEASURED FROM THE GUTTER PAN) WILL NOT BE ACCEPTABLE IN THE CLEAR SIGHT TRIANGLE.

GENERAL NOTES:

- 1. ALL IMPROVEMENTS LOCATED IN THE RIGHT OF WAY MUST BE INCLUDED ON A WORK ORDER

LEGEND

- PROPERTY NUMBER
BUILDING NUMBER
TYPE 2 BUILDING TYPE
No. OF PARKING SPACES
ACCESSIBLE PARKING AND ANSI TYPE 'A' DWELLING UNIT
FIRE HYDRANT
UNIT WITH FIREPLACE REFER TO BUILDING PLANS
DENOTES TRANSFORMER LOCATION
DENOTES WATER METER LOCATION



SCALE: 1" = 50'-0"

SITE PLAN

DATE: FEBRUARY 27, 2018 ORR # 15-218

A1.10

SITE PLAN