

PROJECT NUMBER: \_\_\_\_\_

Application Number: \_\_\_\_\_

This plan is consistent with the specific Site Development Plan approved by the Environmental Planning Commission (EPC), dated \_\_\_\_\_ and the Findings and Conditions in the Official Notification of Decision are satisfied.

Is an Infrastructure List required? ( ) Yes ( ) No If yes, then a set of approved DRC plans with a work order is required for any construction within Public Right-of-Way or for construction of public improvements.

DRB SITE DEVELOPMENT PLAN SIGNOFF APPROVAL:

Traffic Engineering, Transportation Division \_\_\_\_\_ Date \_\_\_\_\_

ABCWUA \_\_\_\_\_ Date \_\_\_\_\_

Parks and Recreation Department \_\_\_\_\_ Date \_\_\_\_\_

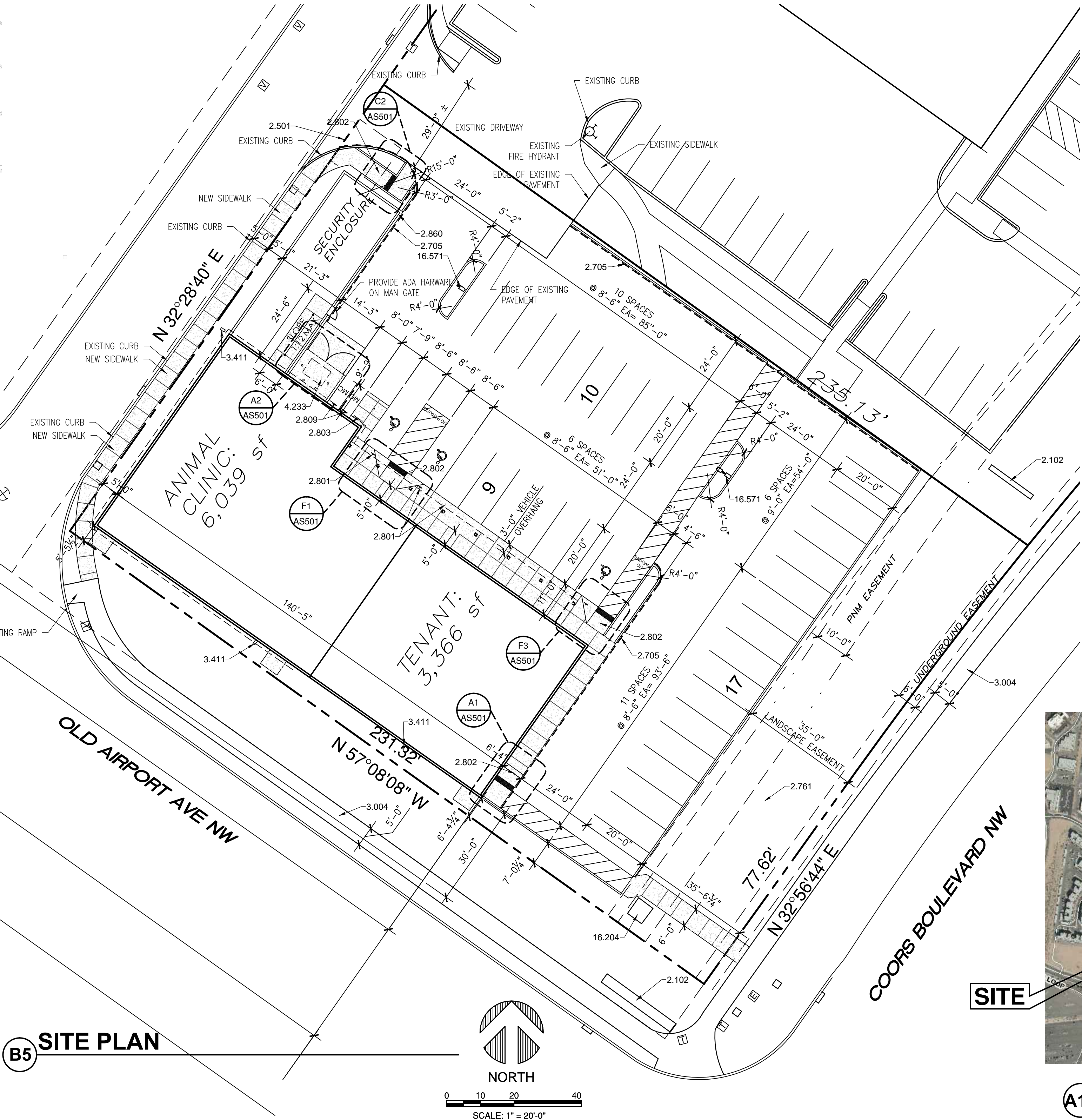
City Engineer \_\_\_\_\_ Date \_\_\_\_\_

Environmental Health Department (conditional) \_\_\_\_\_ Date \_\_\_\_\_

Solid Waste Management \_\_\_\_\_ Date \_\_\_\_\_

DRB Chairperson, Planning Department \_\_\_\_\_ Date \_\_\_\_\_

\*Environmental Health, if necessary  
6/25/07



GENERAL NOTES

- A. THIS IS NOT A SURVEY. INFORMATION TAKEN FROM A SURVEY PREPARED BY HARRIS SURVEYING, INC., DATED, DECEMBER 20, 2013. REFER TO THAT SURVEY FOR ALL BOUNDARY AND EXISTING CONDITIONS.
- B. SIDEWALKS TO HAVE A MINIMUM 2% CROSS SLOPE.

PARKING ANALYSIS

PARKING REQUIRED (1 PER 200 SF):	45
PARKING PROVIDED:	36
ADA PARKING REQUIRED:	3
ADA PARKING PROVIDED:	3
MOTORCYCLE PARKING REQUIRED (1 PER 20 VEHICLES):	2
MOTORCYCLE PARKING PROVIDED:	2
BICYCLE PARKING REQUIRED:	2
BICYCLE PARKING PROVIDED:	2

REFERENCE KEYNOTES

- DIVISION 02 - SITE CONSTRUCTION
- 2.102 - EXISTING MONUMENT SIGN
  - 2.501 - WATER METER EASEMENT
  - 2.705 - CURB PAINTED RED WITH 4" WHITE LETTERING "FIRE LANE NO PARKING" ON FACE OF CURB
  - 2.761 - ADA ACCESSIBLE ROUTE
  - 2.801 - ADA PARKING SIGN - SEE DETAIL C1/AS501
  - 2.802 - ADA ACCESSIBLE RAMP - SEE DETAILS AS501
  - 2.803 - BIKE RACK - SEE DETAIL D5/AS501
  - 2.809 - MOTORCYCLE PARKING SIGN
  - 2.860 - 6'-0" HIGH VINYL FENCE

- DIVISION 03 - CONCRETE
- 3.004 - EXISTING CONCRETE SIDEWALK
  - 3.411 - PRECAST CONCRETE SPLASH BLOCK

- DIVISION 04 - MASONRY
- 4.233 - CMU TRASH ENCLOSURE

- DIVISION 16 - ELECTRICAL
- 16.204 - TRANSFORMER - PNM TO SET LOCATION
  - 16.571 - 20' HIGH PARKING LOT LIGHT POLE

PROJECT DATA

TOTAL SQUARE FOOTAGE	=	9,405 SF
OCCUPANCY TYPE	=	B
CONSTRUCTION TYPE	=	V-B
MAX. BUILDING HEIGHT	=	25'-3"



SOUTHWEST VETERINARY  
MEDICAL CENTER

Lowes Lot 6 Site Development  
Albuquerque, New Mexico 87114  
Daniel Levenson D.V.M.

Copyright 2014, BDA ARCHITECTURE PC.

ARCHITECTURAL SITE PLAN

REV.#	DATE	COMMENTS
REVISION:		
REVISION:		
REVISION:		
REVISION:		

INITIALS	REVIEWS
-	BDA DSGN. REV.
-	BDA TECH REV.
-	CMP TECH REV.

LEVENSON  
PROJECT NO.: 1320  
DRAWN: CC,LLK  
DATE: 11/04/14

AS101