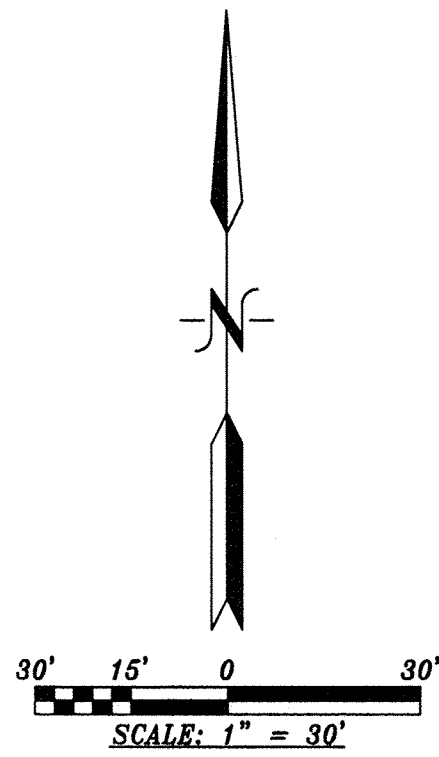


# PLAT OF TRACTS A-1 AND B-1, BLOCK D INDIAN ACRES

WITHIN SECTION 3, TOWNSHIP 10 NORTH, RANGE 3 EAST, N.M.P.M. CITY OF ALBUQUERQUE BERNALILLO COUNTY, NEW MEXICO JANUARY, 2014

PROJECT #: 1009956  
DATE: 2-12-14  
APP #: 14-70033(SK)

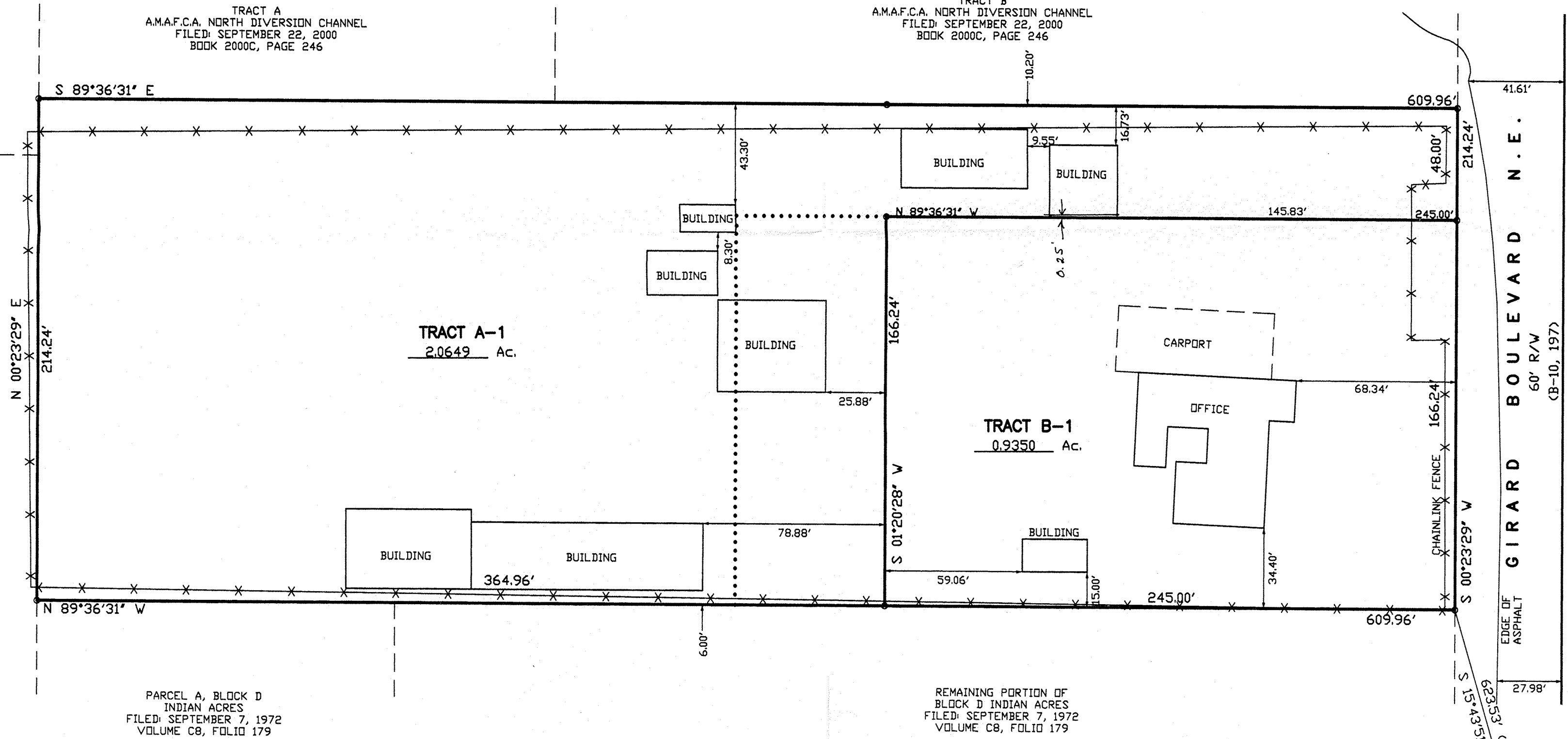


TRACT A  
COMANCHE BUSINESS CENTER  
FILED: SEPTEMBER 2, 1999  
VOLUME 99C, FOLIO 25

TRACT A  
A.M.A.F.C.A. NORTH DIVERSION CHANNEL  
FILED: SEPTEMBER 22, 2000  
BOOK 2000C, PAGE 246

TRACT B  
A.M.A.F.C.A. NORTH DIVERSION CHANNEL  
FILED: SEPTEMBER 22, 2000  
BOOK 2000C, PAGE 246

REMAINING PORTION OF  
BLOCK D INDIAN ACRES  
FILED: SEPTEMBER 7, 1972  
VOLUME C8, FOLIO 179



PARCEL A, BLOCK D  
INDIAN ACRES  
FILED: SEPTEMBER 7, 1972  
VOLUME C8, FOLIO 179

REMAINING PORTION OF  
BLOCK D INDIAN ACRES  
FILED: SEPTEMBER 7, 1972  
VOLUME C8, FOLIO 179

ACS STATION "NDC 17-1A"  
N=1,499,283.115  
E=1,532,025.919  
GRD TO GRID=0.999672939  
Δα = -00° 12' 30.71"  
CENTRAL ZONE, NAD 1983

13-0774.DWG (JANUARY, 2014)