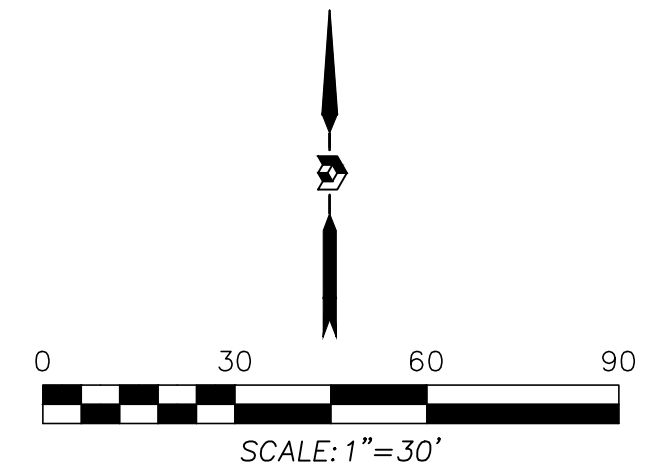


Site Plan
 Lot 12-A and Tract A-1, Block 1
Timoteo Chavez Addition

Albuquerque, Bernalillo County, New Mexico
 September 2014

RECORDING STAMP

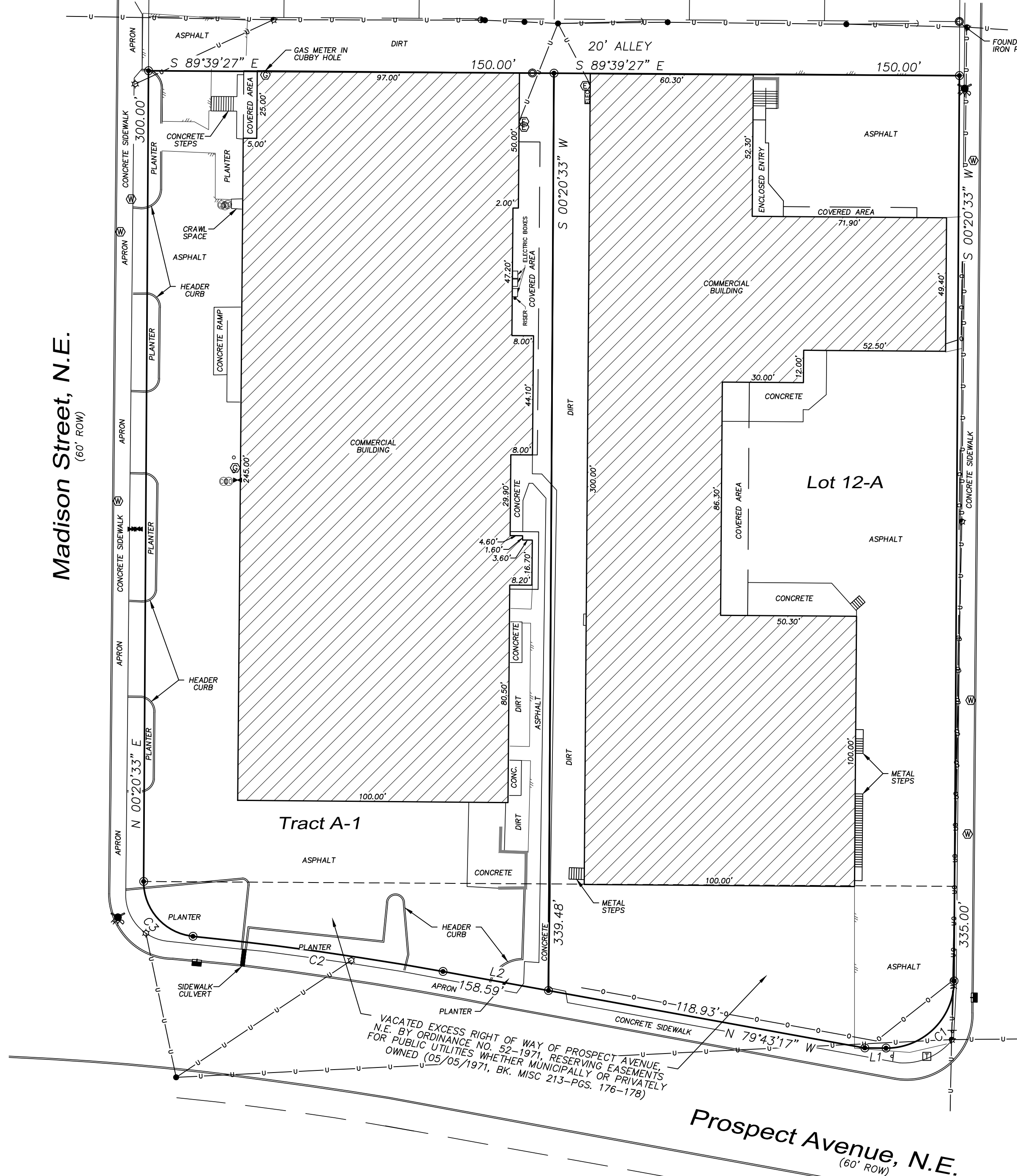


Legend

N 90°00'00" E	MEASURED BEARING AND DISTANCES
(N 90°00'00" E)	RECORD BEARINGS AND DISTANCES
○	FOUND AND USED MONUMENT AS DESIGNATED
⊙	DENOTES NO. 4 REBAR WITH YELLOW PLASTIC CAP "PS 11993" SET THIS SURVEY AS DESIGNATED
△	FOUND ALUMINUM AGRS MONUMENT AS DESIGNATED
•	UTILITY POLE
☆	UTILITY POLE W/OVERHEAD LIGHT
★	LIGHT POLE
⊙	DROP POLE
+	GUY WIRE
⊞	PEDESTAL TELEPHONE
⊞	GAS METER
⊞	WATER METER
⊞	ELECTRIC METER
⊞	PANEL BOX
⊞	FIRE HYDRANT
⊞	CLEANOUT
⊞	IRRIGATION CONTROL VALVE
⊞	SIGN
⊞	DROP INLET CURB
○	GUARD POST
■	SIDEWALK CULVERT
○	CHAINLINK FENCE
---	EDGE OF ASPHALT
—	OVERHEAD UTILITY LINE
—	BLOCK WALL

Madison Street, N.E.
 (60' ROW)

Monroe Street, N.E.
 (60' ROW)



VACATED EXCESS RIGHT OF WAY OF PROSPECT AVENUE, N.E. BY ORDINANCE NO. 52-1971, RESERVING EASEMENTS FOR PUBLIC UTILITIES WHETHER MUNICIPALLY OR PRIVATELY OWNED (05/05/1971, BK. MISC 213-PGS. 176-178)

INDEXING INFORMATION FOR COUNTY CLERK
 OWNER ELLIOT L. BERGER LOT 13/TRACT A
 OWNER LOYD GOATCHER LOTS 7-12
 SECTION 11, TOWNSHIP 10 N, RANGE 3 E,
 SUBDIVISION TIMOTEO CHAVEZ ADDITION

PRECISION
 SURVEYS, INC.

OFFICE LOCATION:
 5571 Midway Park Place, NE
 Albuquerque, NM 87109
 MAILING ADDRESS:
 PO Box 90636
 Albuquerque, NM 87199

505.856.5700 PHONE
 505.856.7900 FAX