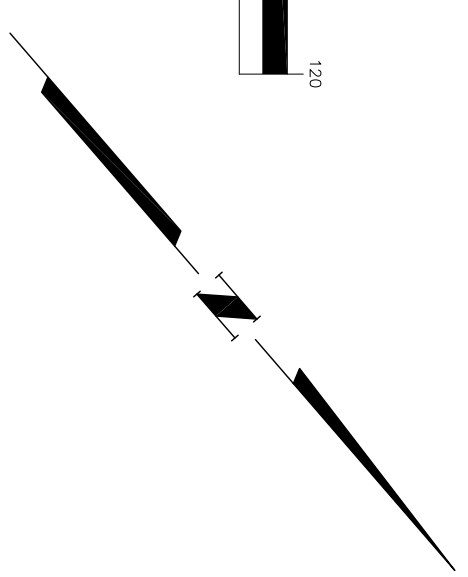


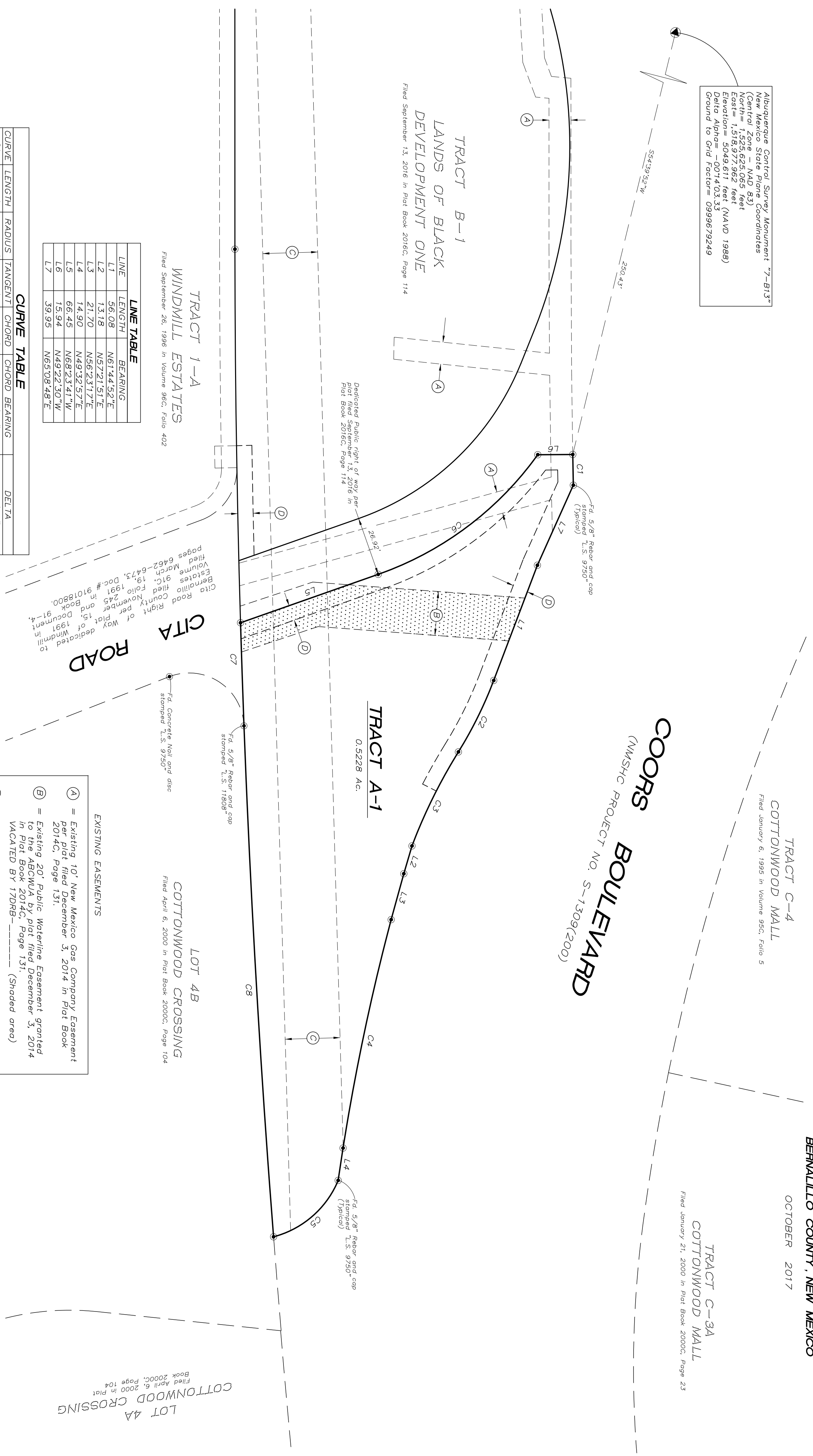
GRAPHIC SCALE
(IN FEET)
1 inch = 30 ft



VACATION EXHIBIT
TRACT A-1
LANDS OF BLACK DEVELOPMENT ONE
SITUATE WITHIN
THE TOWN OF ALAMEDA GRANT
IN
PROJECTED SECTION 8, TOWNSHIP 11 NORTH, RANGE 3 EAST
NEW MEXICO PRINCIPAL MERIDIAN
CITY OF ALBUQUERQUE
BERNALILLO COUNTY, NEW MEXICO
OCTOBER 2017

Albuquerque Control Survey Monument "7-B13"
New Mexico State Plane Coordinates
(Central Zone - NAD 83)
North = 1,525,625.065 feet
East = 1,518,977.962 feet
Elevation = 5049.611 feet (NAVD 1988)
Delta Alpha = -0014.03.33
Ground to Grid Factor = 0.999679249

COORS BOULEVARD
(MNSHC PROJECT NO. S-1309(200))



TRACT B-1
LANDS OF BLACK DEVELOPMENT ONE
Filed September 13, 2016 in Plat Book 2016C, Page 114

TRACT 1-A
WINDMILL ESTATES
Filed September 26, 1996 in Volume 96C, Folio 402

TRACT C-4
COTTONWOOD MALL
Filed January 6, 1995 in Volume 95C, Folio 5

TRACT C-3A
COTTONWOOD MALL
Filed January 21, 2000 in Plat Book 2000C, Page 23

LOT 4B
COTTONWOOD CROSSING
Filed April 6, 2000 in Plat Book 2000C, Page 104

LOT 4A
COTTONWOOD CROSSING
Filed April 6, 2000 in Plat Book 2000C, Page 104

LINE TABLE

LINE	LENGTH	BEARING
L1	56.08	N61.44.52"E
L2	13.18	N57.21.51"E
L3	21.70	N56.23.17"E
L4	14.90	N49.32.57"E
L5	66.45	N68.23.41"W
L6	15.94	N49.22.30"W
L7	39.95	N65.08.48"E

CURVE TABLE

CURVE	LENGTH	RADIUS	TANGENT	CHORD	CHORD BEARING	DELTA
C1	13.97'	5654.58'	6.99'	13.97'	N39.56.42"E	0.08.30"
C2	36.34'	188.21'	18.23'	36.28'	S67.17.01"W	11.03.48"
C3	47.80'	247.21'	23.98'	47.73'	N67.16.32"E	11.04.46"
C4	106.29'	1042.49'	53.19'	106.25'	N52.52.47"E	5.50.31"
C5	40.46'	43.86'	21.80'	39.04'	S89.52.59"W	52.51.29"
C6	92.21'	150.79'	47.80'	90.78'	N85.52.15"W	35.02.05"
C7	46.96'	5802.58'	23.48'	46.96'	N39.03.14"E	0.27.48"
C8	232.98'	5807.58'	116.51'	232.97'	N37.40.20"E	21.7.55"

EXISTING EASEMENTS

- (A) = Existing 10' New Mexico Gas Company Easement per Plat filed December 3, 2014 in Plat Book 2014C, Page 131.
- (B) = Existing 20' Public Waterline Easement granted to the ABCWUA by plat filed December 3, 2014 in Plat Book 2014C, Page 131. (Shaded area)
- (C) = Existing 25' Public Service Company of New Mexico Overhead Transmission Line Easement per Plat filed December 3, 2014 in Plat Book 2014C, Page 131.
- (D) = Existing 10' Public Utility Easement granted by plat filed September 13, 2016 in Plat Book 2016C, Page 114.