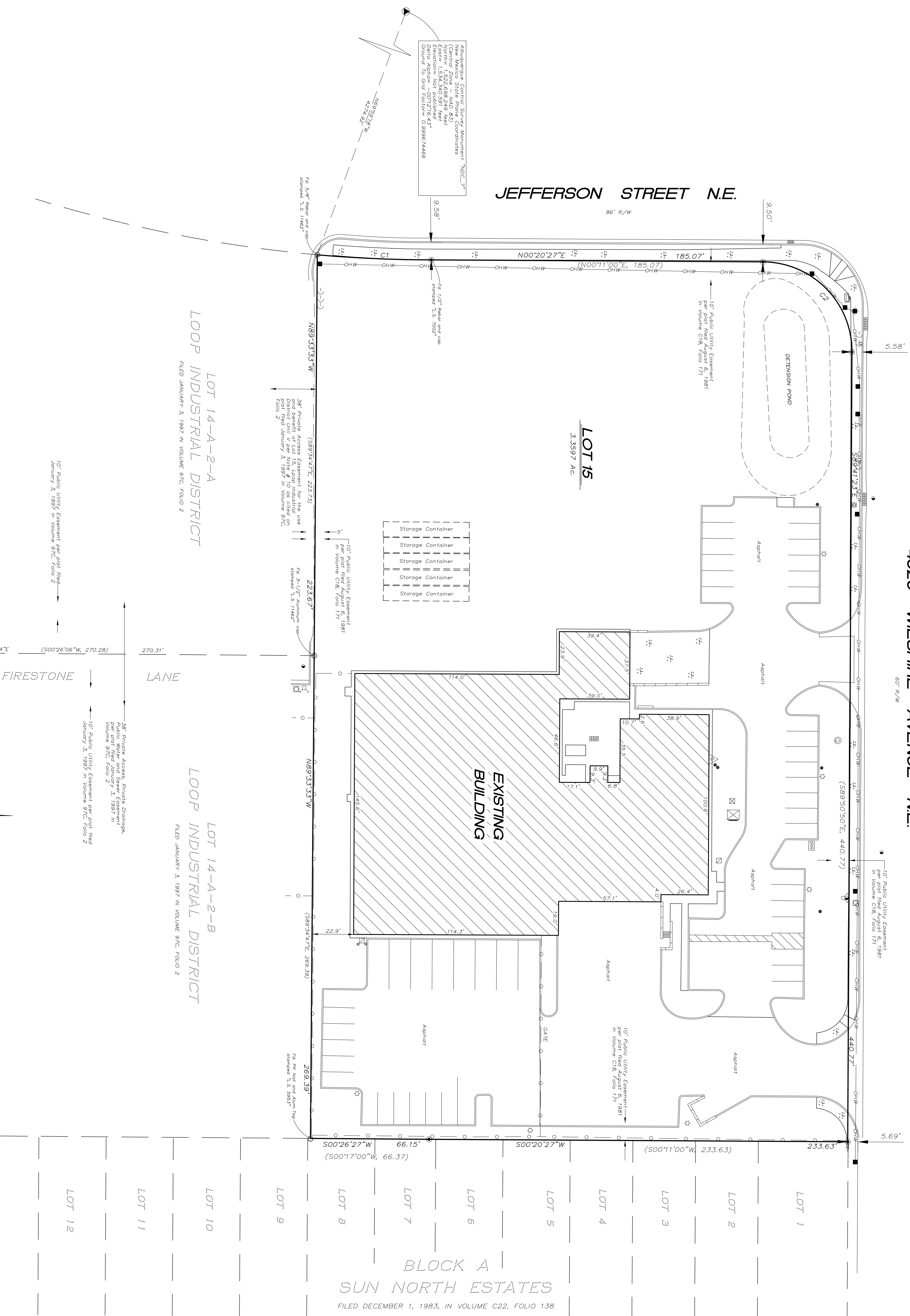


4920 WILSHIRE AVENUE NE.

60' R/W

BOUNDARY SURVEY PLAT  
 LOT 15  
 LOOP INDUSTRIAL DISTRICT  
 UNIT V

THE ELENA GALLEGOS GRANT  
 IN  
 PROJECTED SECTION 14, TOWNSHIP 11 NORTH, RANGE 3 EAST  
 NEW MEXICO PRINCIPAL MERIDIAN  
 CITY OF ALBUQUERQUE  
 BERNALILLO COUNTY, NEW MEXICO  
 JUNE, 2014



Albuquerque Control Survey Monument "NOC-2"  
 New Mexico State Plane Coordinates  
 Northings: 12224683.219 feet  
 Westings: 12224683.219 feet  
 Elevation: Not Published  
 Station ID: 12224683.219  
 Ground No. and Office: 4399674466

JEFFERSON STREET N.E.  
 86' R/W

LOT 15  
 3.3597 Ac.

EXISTING  
 BUILDING

LOT 14-A-2-A  
 LOOP INDUSTRIAL DISTRICT  
 FILED JANUARY 3, 1997 IN VOLUME 97C, FOLIO 2

LOT 14-A-2-B  
 LOOP INDUSTRIAL DISTRICT  
 FILED JANUARY 3, 1997 IN VOLUME 97C, FOLIO 2

BLOCK A  
 SUN NORTH ESTATES  
 FILED DECEMBER 1, 1983, IN VOLUME C22, FOLIO 138

FLOOD ZONE DETERMINATION

The subject property (as shown hereon) appears to lie within Zone "X" (areas determined to be outside 0.2% annual chance floodplain) in accordance with the National Flood Insurance Program Rate Map No. 35001C0137 H, Effective Date 8-16-2012.



CURVE TABLE

CURVE	LENGTH	RADIUS	TANGENT	CHORD	CHORD BEARING	DELTA
C1	63.68'	759.20'	31.86'	63.66'	N02°31'45"E	4°48'20"
C2	78.51'	50.00'	49.97'	70.69'	S45°19'32"W	89°58'10"

GENERAL NOTES

1. Bearings are grid and based on the New Mexico State Plane Coordinate System, Central Zone (NAD83).
2. Distances are ground.
3. Distances along curved lines are arc lengths.
4. Record Plat or Deed bearings and distances, where they differ from those established by this field survey, are shown in parentheses ( ).
5. All corners found in place and held were tagged with a brass disk stamped "HUGG L.S. 9750" unless otherwise indicated hereon.
6. All corners that were set are either a 5/8" rebar with cap stamped "HUGG L.S. 9750" or a concrete nail with brass disk stamped "HUGG L.S. 9750" unless otherwise indicated hereon.
7. City of Albuquerque Zone Atlas Page C-17-2.

DOCUMENTS USED IN THE PREPARATION OF THIS SURVEY

- a. Plat entitled, "LOTS 1 THROUGH 15, UNIT V, LOOP INDUSTRIAL DISTRICT", filed in the office of the County Clerk of Bernalillo County, New Mexico on August 26, 1981 in Volume C18, Folio 171.
- b. Plat entitled, "LOTS 14-A-2-A THROUGH 14-A-2-H INCLUSIVE, LOOP INDUSTRIAL DISTRICT UNIT V", filed in the office of the County Clerk of Bernalillo County, New Mexico on January 3, 1997 in Volume 97C, Folio 2.
- c. Title Insurance Company Commitment for Title Insurance No. xxxxxx, dated xxxx 2014.

SURVEYORS CERTIFICATION

I, Russ P. Hugg, New Mexico Professional Surveyor Number 9750, hereby certify that this Boundary Survey Plat was prepared from an accurate ground survey and that the bearings and distances are true and correct to the best of my knowledge and belief, and that this Boundary Survey Plat and the field notes hereon are true and correct to the best of my knowledge and belief. I am a duly licensed and qualified surveyor as defined in the New Mexico Subdivision Act and that this is a Boundary Survey Plat of one existing tract.

IN WITNESS WHEREOF, this certificate is executed at Albuquerque, New Mexico, on this 24th day of June, 2014.

Russ P. Hugg  
 NPS No. 9750