

**DEKKER  
PERICH  
SABATINI**

7601 JEFFERSON NE, SUITE 100  
ALBUQUERQUE, NM 87109

505.761.9700 / DPSDESIGN.ORG

ARCHITECT

ENGINEER

PROJECT

**LEGACY @ JOURNAL CENTER**  
5151 LANG AVENUE NE  
Albuquerque, New Mexico 87109

REVISIONS

- △
- △
- △
- △

DRAWN BY MHS

REVIEWED BY MJB

DATE July 15, 2016

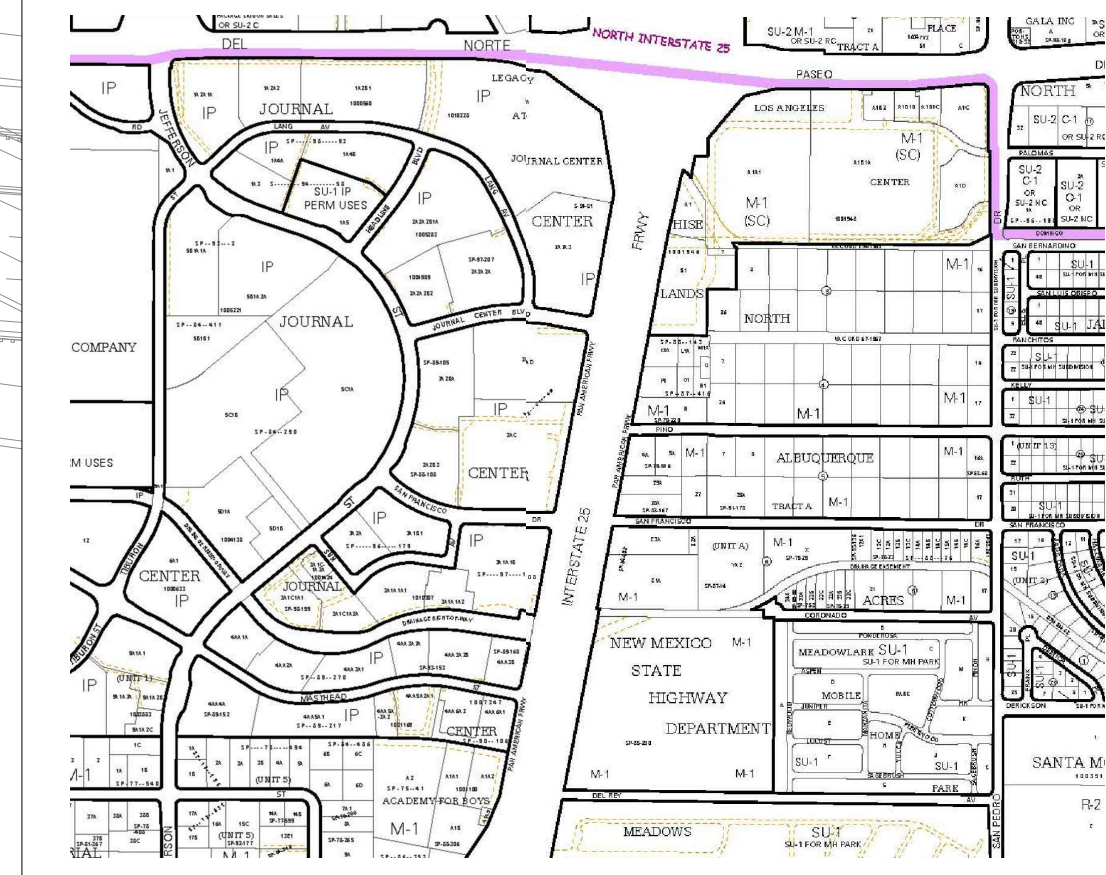
PROJECT NO. 16-0068

DRAWING NAME  
**CONCEPTUAL  
GRADING PLAN**

SHEET NO.

**SPSB-2**

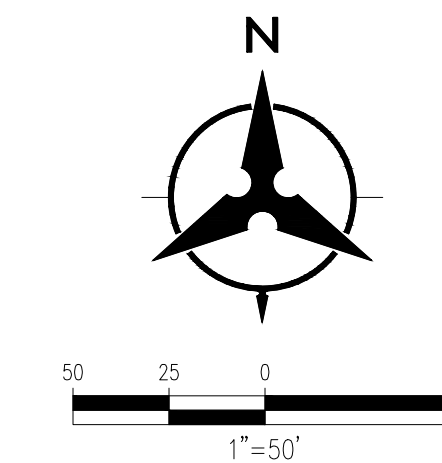
OF



**VICINITY MAP**  
ZONE MAP D-17 & D-18

**GRADING KEYNOTES**

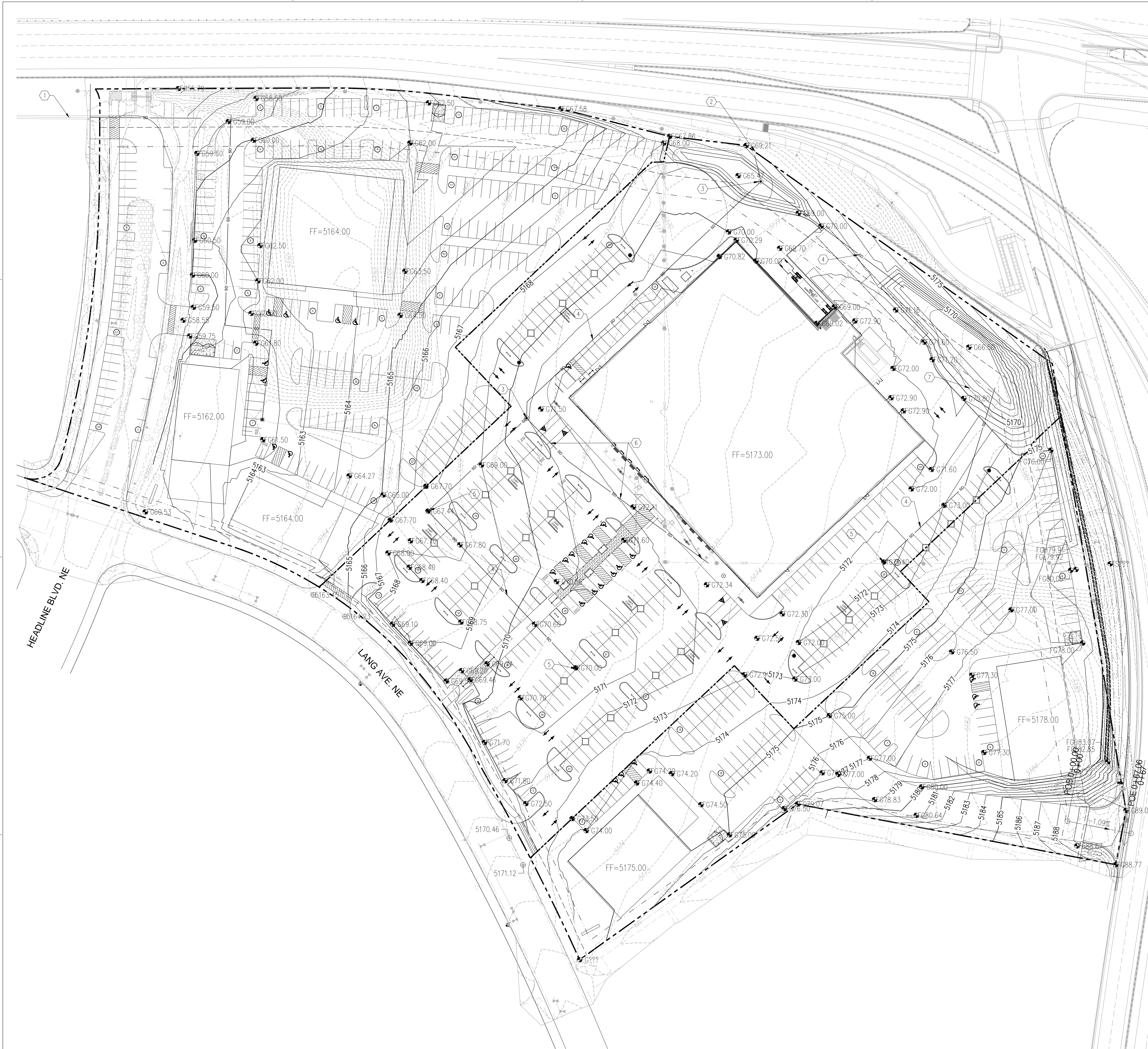
1. EXISTING 42" STORM DRAIN.
2. EXISTING INLET AND 36" STORM DRAIN STUBED TO THE SITE CONSTRUCTED UNDER THE PASEO DEL NORTE PROJECT.
3. STORM DRAIN MANHOLE PER COA STD DWG 2102.
4. NEW HDPE STORM DRAIN. SIZE AND SLOPE PER PLAN.
5. NEW COA TYPE 'D' INLET OR ADS AREA DRAIN.
6. CONNECT ROOF DRAINS TO NEW STORM DRAIN
7. NEW CONCRETE RUNDOWN



**GRADING LEGEND**

	PROPERTY LINE		PROPOSED CURB & GUTTER
	PROJECT LIMITS OF GRADING		DIRECTION OF FLOW
	EXISTING INDEX CONTOUR		WATER BLOCK/GRADE BREAK
	EXISTING INTERMEDIATE CONTOUR		PROPOSED STORM DRAIN LINE
	EXISTING GROUND SPOT ELEVATION		PROPOSED STORM DRAIN MANHOLE
	PROPOSED INDEX CONTOUR		PROPOSED STORM DRAIN INLETS
	PROPOSED INTERMEDIATE CONTOUR		PROPOSED RETAINING WALL
	PROPOSED FLOW LINE		EASEMENT
	PROPOSED FINISHED GRADE SPOT ELEVATION		

FF=FINISH GRADE  
 TC=TOP OF CURB  
 FL=FLOW LINE  
 TS=TOP OF SIDEWALK  
 TG=TOP OF GRATE  
 FGH=FINISH GROUND HIGH  
 FGL=FINISH GROUND LOW



**NOT FOR  
CONSTRUCTION**



P:\20170053\CDP\Plans\General\20170053\_GP01.dwg, Layout1  
July 14, 2016 - 11:12am  
Plotted by: MBALASKOWITS