

REVISIONS

△	
△	
△	
△	

DRAWN BY
REVIEWED BY
DATE November 21, 2016
PROJECT NO. 16-0068.001
DRAWING NAME
**BUILDING
ELEVATIONS**


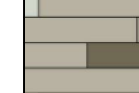



GENERAL SHEET NOTES

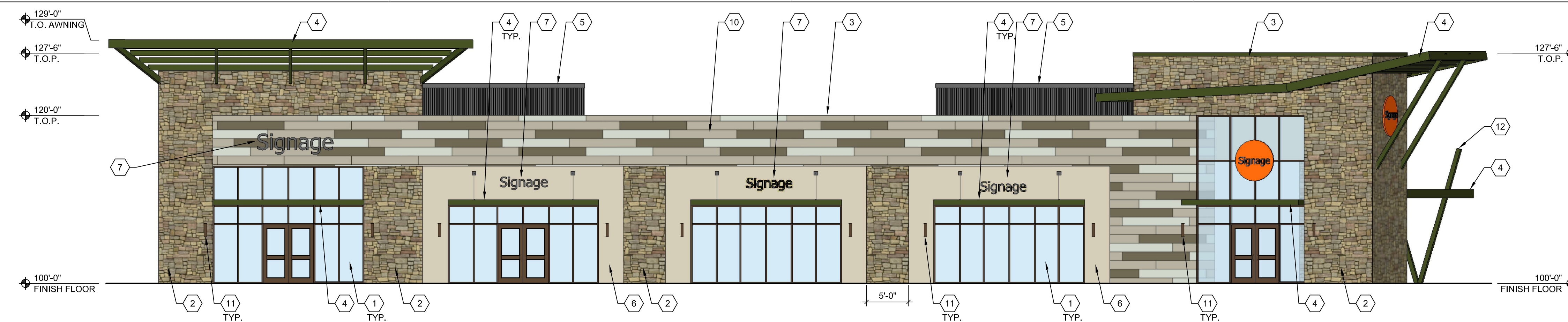
A. BUILDING MOUNTED SIGNS SHALL COMPLY WITH GENERAL SIGN REGULATIONS SECTION 14-16-3-5 OF THE CITY OF ALBUQUERQUE ZONING CODE AND SHALL BE SUBMITTED UNDER SEPARATE PERMIT.

(7) SHEET KEYED NOTES

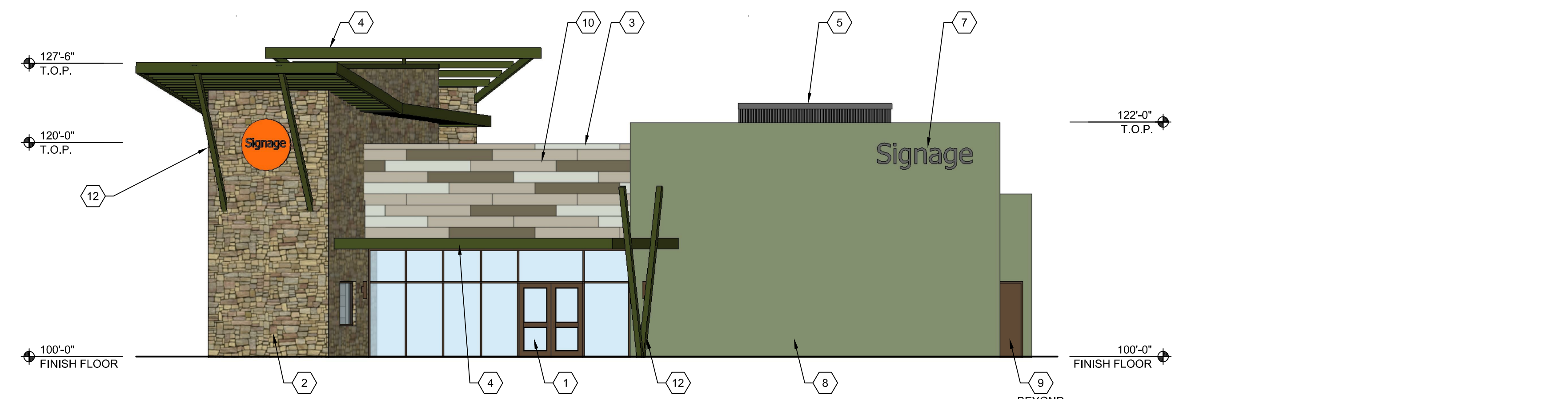
1. ALUMINUM STOREFRONT, COLOR: DARK BRONZE.
2. STONE VENEER, STYLE: BOULDER CREEK CABELA'S BLEND.
3. PRE-FINISHED METAL COPING, COLOR: DARK GREEN.
4. STEEL AWNING, COLOR: DARK GREEN.
5. RIBBED METAL PANEL ROOFTOP HVAC SCREEN, COLOR: DARK GREY.
6. PORTLAND CEMENT PLASTER, COLOR: TAN.
7. BUILDING SIGNAGE, SEE: GENERAL SHEET NOTES.
8. PORTLAND CEMENT PLASTER, COLOR: LIGHT GREEN.
9. HOLLOW METAL DOOR, COLOR: TO MATCH ALUMINUM STOREFRONT.
10. METAL PANEL SYSTEM, COLOR: MIX OF TAN, GREY, DARK GREEN.
11. WALL SCONCE.
12. STEEL TUBE, COLOR: DARK GREEN.

LEGEND

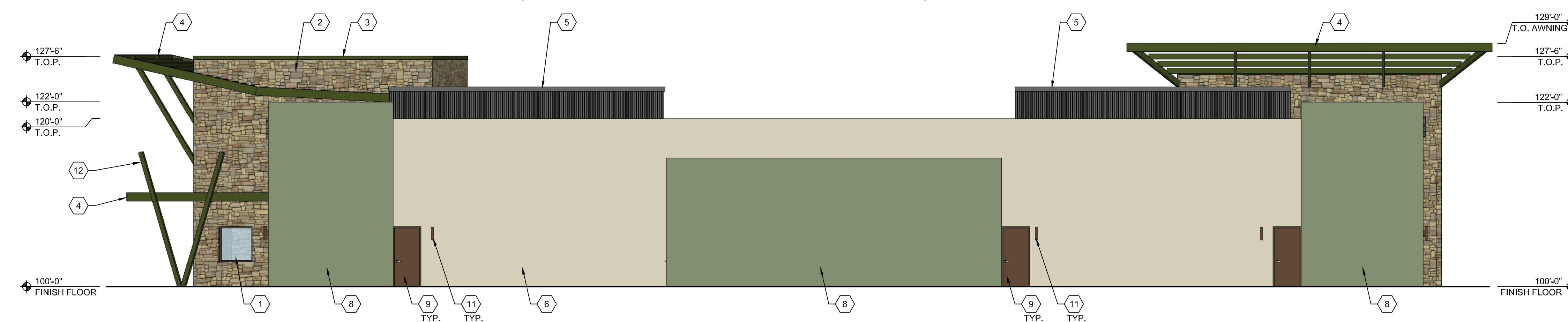
-  STONE VENEER, STYLE: BOULDER CREEK CABELA'S BLEND
-  METAL PANEL SYSTEM, COLOR: MIX OF TAN, GREY, DARK GREEN
-  PORTLAND CEMENT PLASTER, COLOR: TAN
-  PORTLAND CEMENT PLASTER, COLOR: LIGHT GREEN
-  RIBBED METAL PANEL ROOFTOP HVAC SCREEN, COLOR: DARK GREY



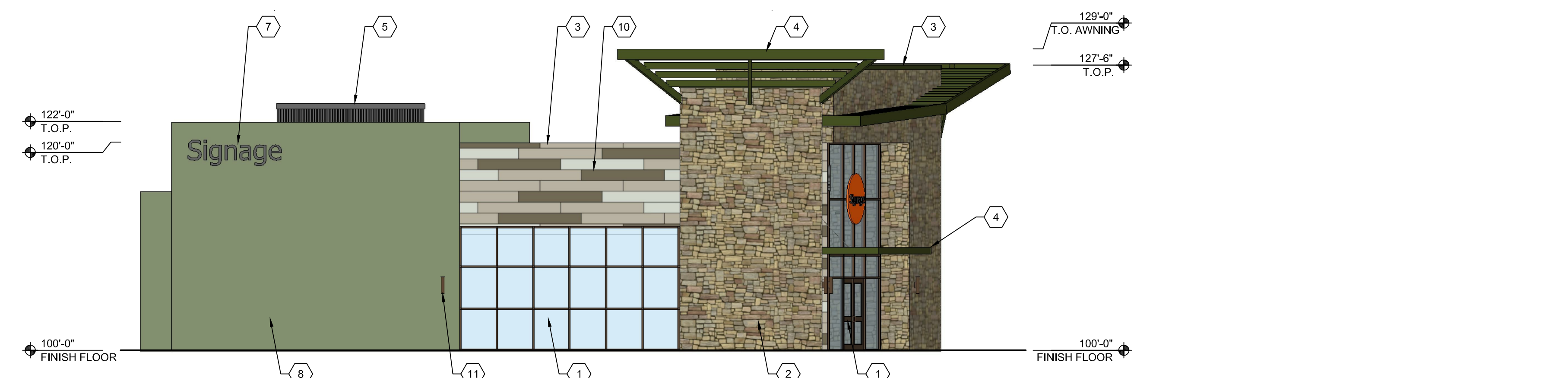
D2 NORTH WEST ELEVATION
1/8" = 1'-0"



C2 SOUTHWEST ELEVATION
1/8" = 1'-0"



B2 SOUTHEAST ELEVATION
1/8" = 1'-0"



A2 NORTHEAST ELEVATION
1/8" = 1'-0"